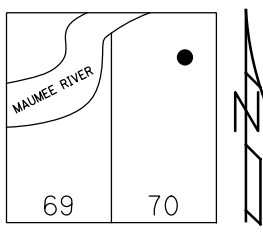


O.D.O.T. DISTRICT 2 SURVEY OFFICE (USE ONLY)

PERSONNEL \_\_\_\_\_ REFERENCE NO. 31 SHEET 6 OF 21  
 NOTES AUBLE DATE 5/8/23 ROUTE SR 65  
 H.C. NIESE WEATHER CLOUDY COUNTY WOOD  
 R.C. AUBLE TEMP. 55° TOWNSHIP PERRYSBURG  
 DWG BY RHOADES PID PAVING TRAIN T 3 12 MILE RESERVE

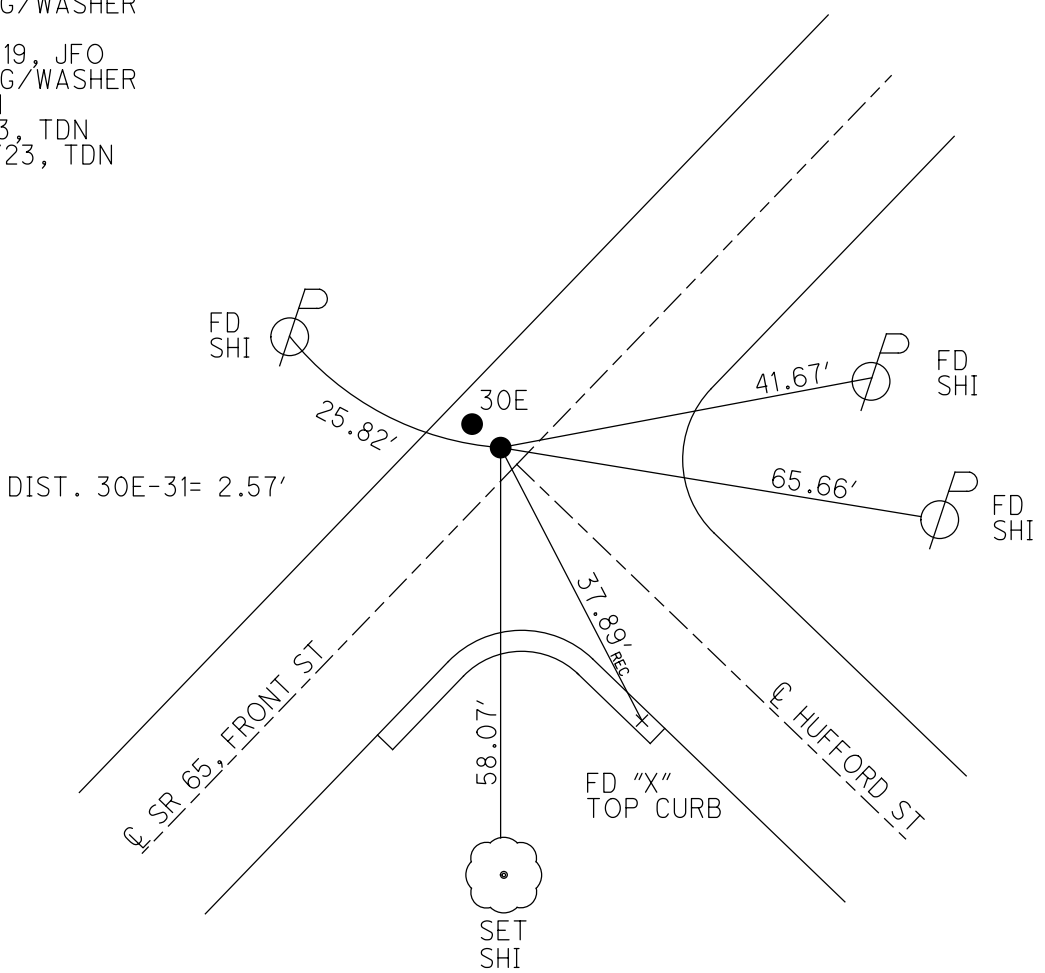
TYPE MONUMENT MAG/WASHER  
 ON SURFACE - ~~BELOW~~ ON  
 OFFSET CL PAVEMENT 4.6' LT : ~~RT~~  
7.4' TO LT EDGE PAVEMENT



STATION: 1066+22  
 HORZ.DATUM: NAD83 2011 GEOID: NAVD88 2018  
 GRID: NORTHING: 697799.288 EASTING: 1666845.401

RECORD:  
 SET MAG/WASHER  
 10/28/05, SAH  
 FD MAG/WASHER  
 REF 31  
 12/16/19, JFO  
 FD MAG/WASHER  
 REF 31  
 5-8-23, TDN  
 10/12/23, TDN

WOOD LPD:  
 N: 519829.802  
 E: 177028.361



O.D.O.T. DISTRICT 2 SURVEY OFFICE (USE ONLY)

PERSONNEL

REFERENCE NO. 31

SHEET 6 OF 8

NOTES HUSS

DATE 9/13/05

ROUTE SR 65

H.C. HOMAN

WEATHER SUNNY

COUNTY WOOD

R.C. MIKLOVIC

TEMP. 80°

TOWNSHIP PERRYSBURG

DWG BY NIESE PID -

SECTION RT 70

T 3 12 MILE RESERVE

TYPE MONUMENT P.K.NAIL

ON SURFACE - ~~BELOW~~ ON

OFFSET 7.4'  $\odot$  PAVEMENT 4.6' LT : ~~RT~~

7.4' TO LT EDGE PAVEMENT

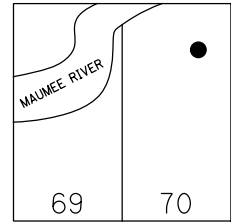
STATION: 1066+22

HORZ.DATUM: NAD83(2011)

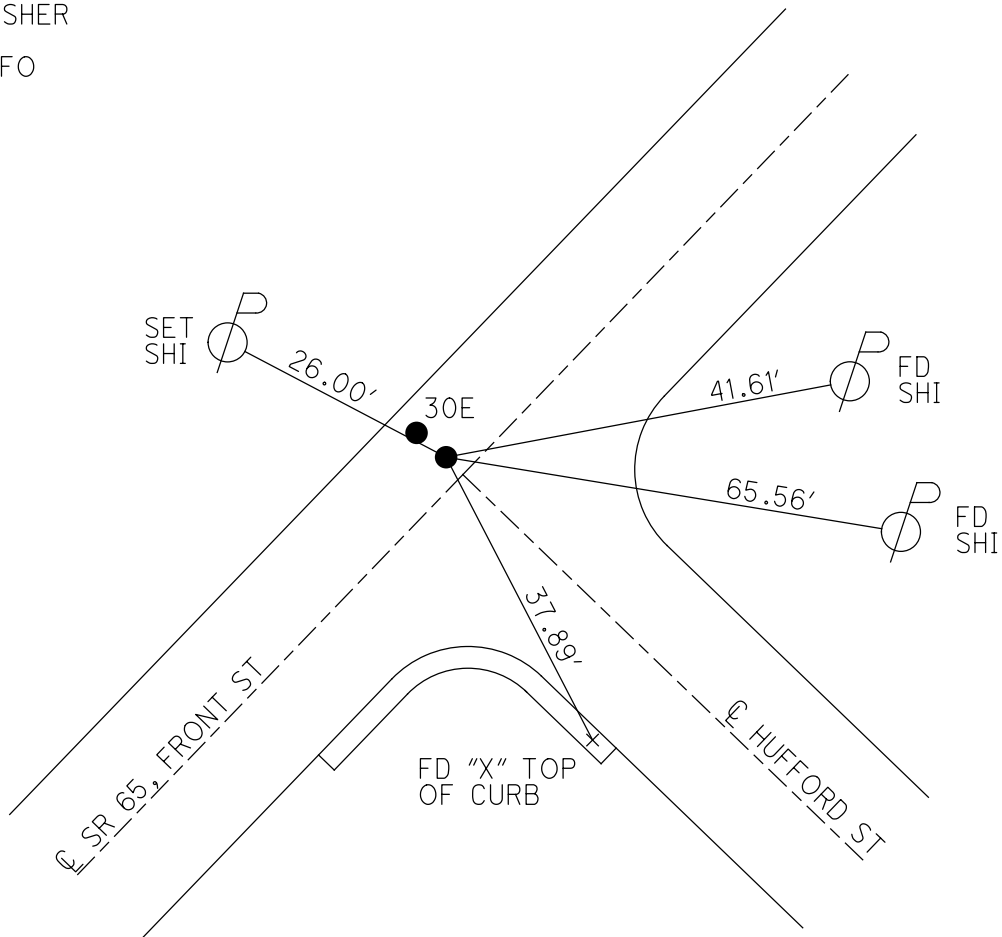
GEOID: 2012A

GRID: NORTHING: 697799.337

EASTING: 1666845.371



RECORD:  
 SET MAG/WASHER  
 10/28/05, SAH  
 FD MAG/WASHER  
 REF31  
 12/16/19, JFO



O.D.O.T. DISTRICT 2 SURVEY OFFICE

PERSONNEL

REFERENCE NO. 31

SHEET 7 OF 14

NOTES \_\_\_\_\_  
 H.C. HUSS  
 R.C. HOMAN  
MIKLOVIC  
 \_\_\_\_\_  
 \_\_\_\_\_

DATE 9-13-05  
 WEATHER SUNNY  
 TEMP. 80°

ROUTE S.R. 65  
 COUNTY WOOD  
 TOWNSHIP PERRYSBURG  
 SECTION RIVER TRACT  
T 7 N R 11 E  
 town 3, 12 miles Res.

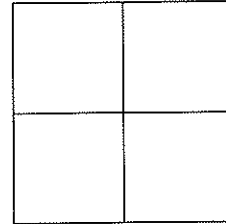
TYPE MONUMENT \_\_\_\_\_ PK NAILS

ON SURFACE - ~~BELOW~~ \_\_\_\_\_ ON

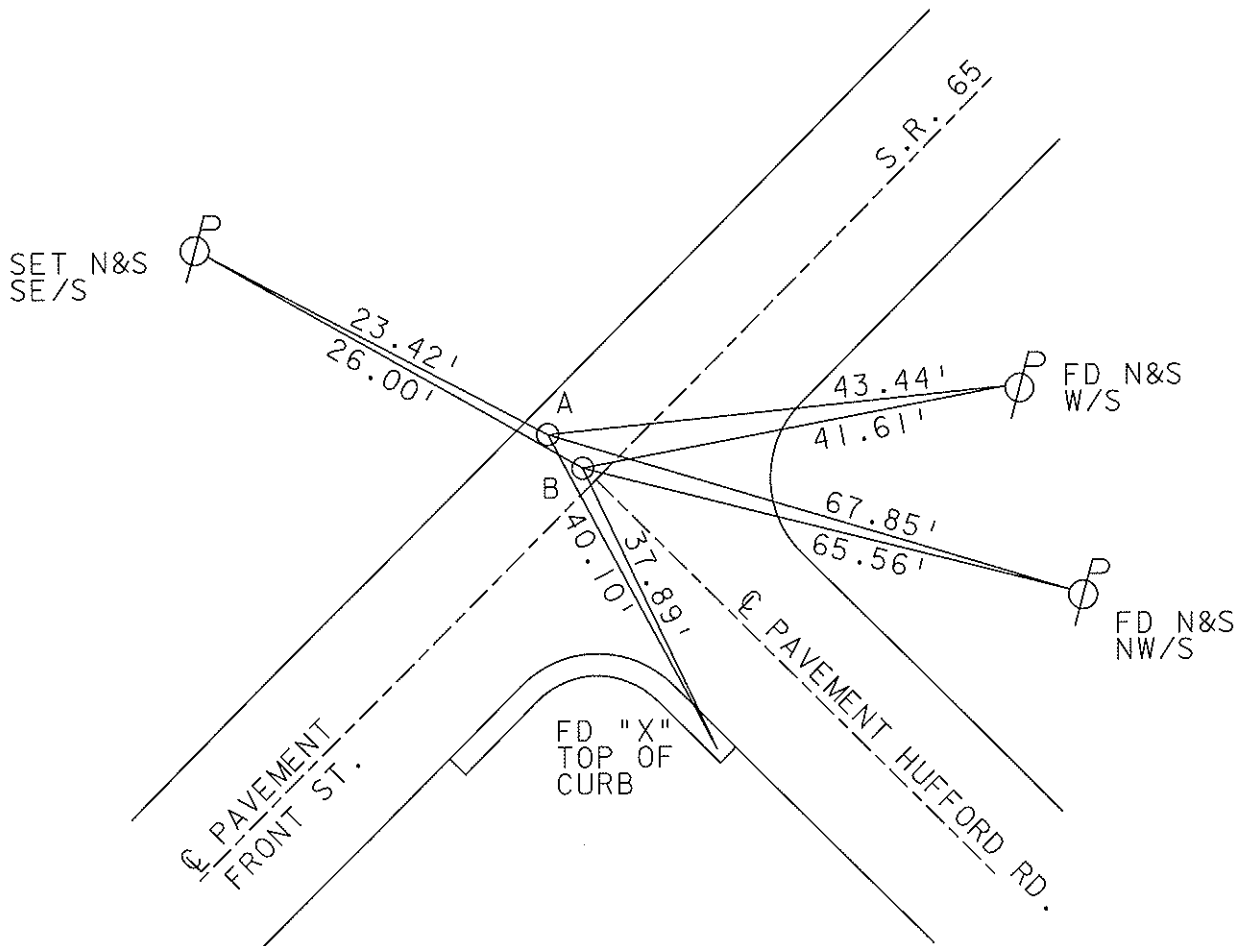
LEFT - ~~C PAVT~~ - ~~RIGHT~~ A 7.1' B 4.6'

<sup>A</sup> 4.8'  
<sup>B</sup> 7.4' TO LT EDGE PAVEMENT

S.L.M. \_\_\_\_\_ 1066+22



SET MAG NAILS  
 & WASHERS  
 10-28-05  
 SAH



# O.D.O.T. DISTRICT 2 SURVEY OFFICE

PERSONNEL

REFERENCE NO. 31

SHEET      OF     

NOTES BARWISSEL

H.C. Reed

DATE 5-3-88

ROUTE 65

R.C. Loehrke

WEATHER Partly Cloudy

COUNTY Wood

HOFFMAN

TEMP. +55°

TOWNSHIP Perrysburg

SECTION River Tract 70

T 7 R 11 E

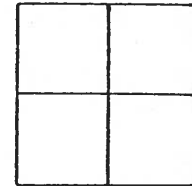
TYPE MONUMENT P.K. Nails

ON SURFACE - ~~BELOW~~ yes

LEFT-~~C~~ PAV'T. - ~~RIGHT~~ 5.2 - 2.60 Between

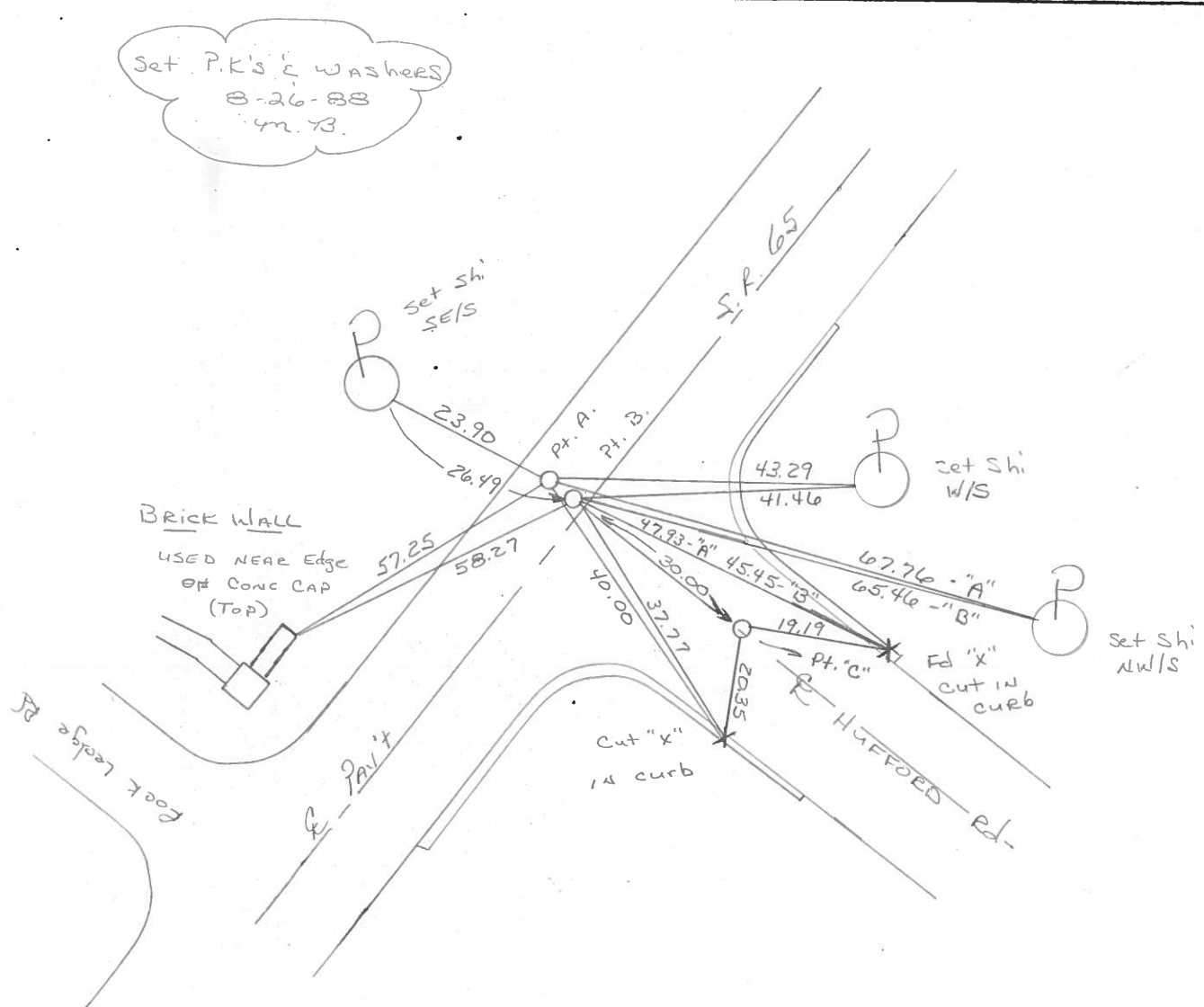
<sup>8.2</sup>  
<sup>10.8</sup> TO Lt EDGE PAVEMENT

S.L.M. 1066 + 22



Pt. A.  
Pt. B.

Set P.K.'s & washers  
8-26-88  
m.B.



9-13-05 DID NOT FIND OR Reset "C"

O.D.O.T. DISTRICT 2 SURVEY OFFICE

SHEET \_\_\_\_\_ OF \_\_\_\_\_

County Wood S.R. 65

Date 13 Nov. 80

Township \_\_\_\_\_

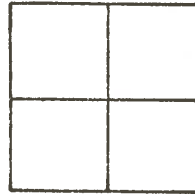
Weather Cloudy

Section \_\_\_\_\_

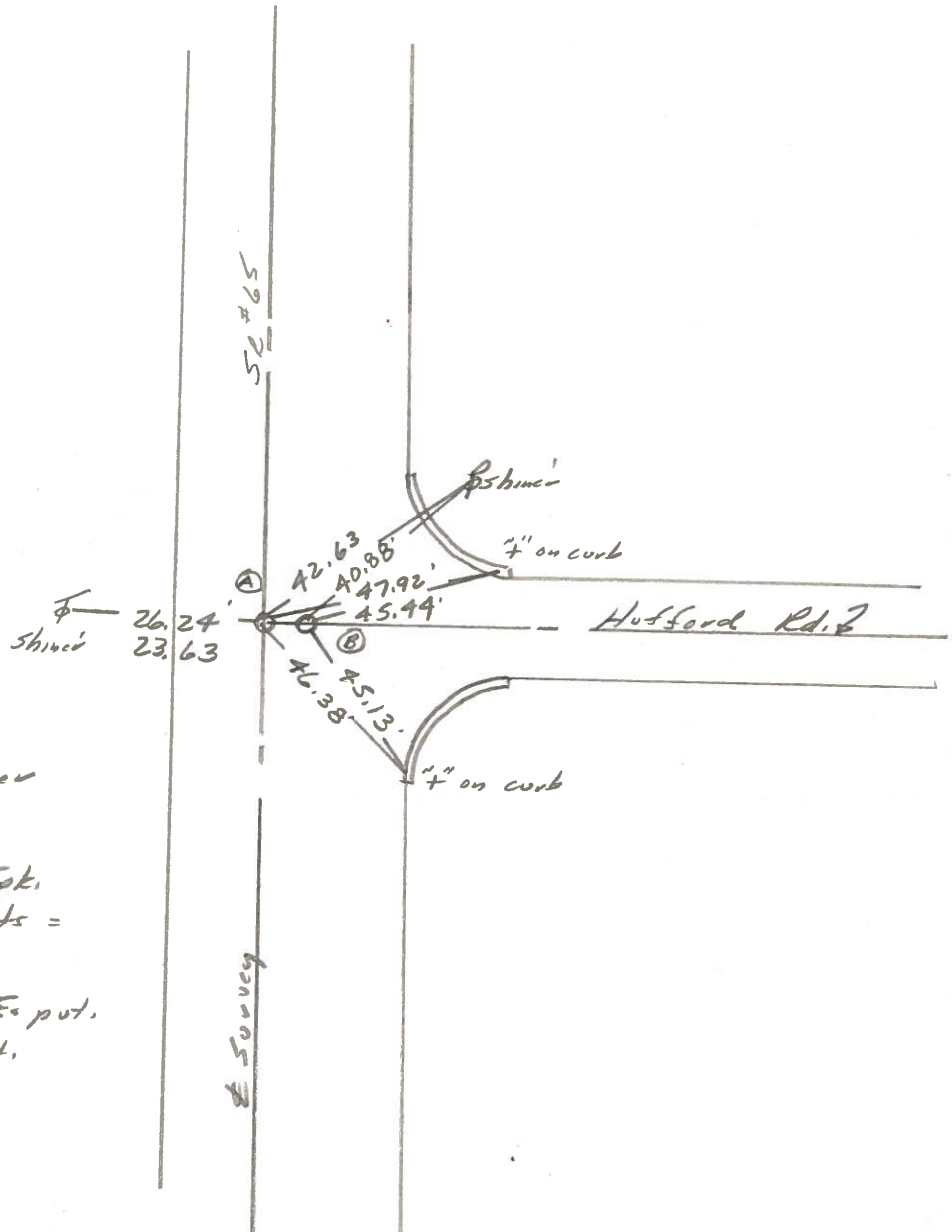
Temp. 50°

T N, R E

Personnel J. Stone  
P. Neuser  
R. Michelak  
D. Curtis  
H. Mead



REF. NO. 31



Set PK Nails as per  
 1978 Refs.  
 400 ± S. of Ohio Tpk.  
 distance between points =  
 2.60'  
 Splits **A** = 8.2' to N.E. put.  
**B** = 10.7' to N.E. put.

O.D.O.T. DISTRICT 2 SURVEY OFFICE

Sht. 14 of 20  
S.R. 65

County WOOD

Date 7-31-78

Township PERRYSBURG

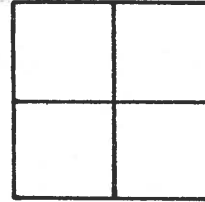
Weather CLEAR

Section \_\_\_\_\_

Temp. +75°

T\_N, R\_E

Personnel BURNSIDE



SMITH

BOWERS

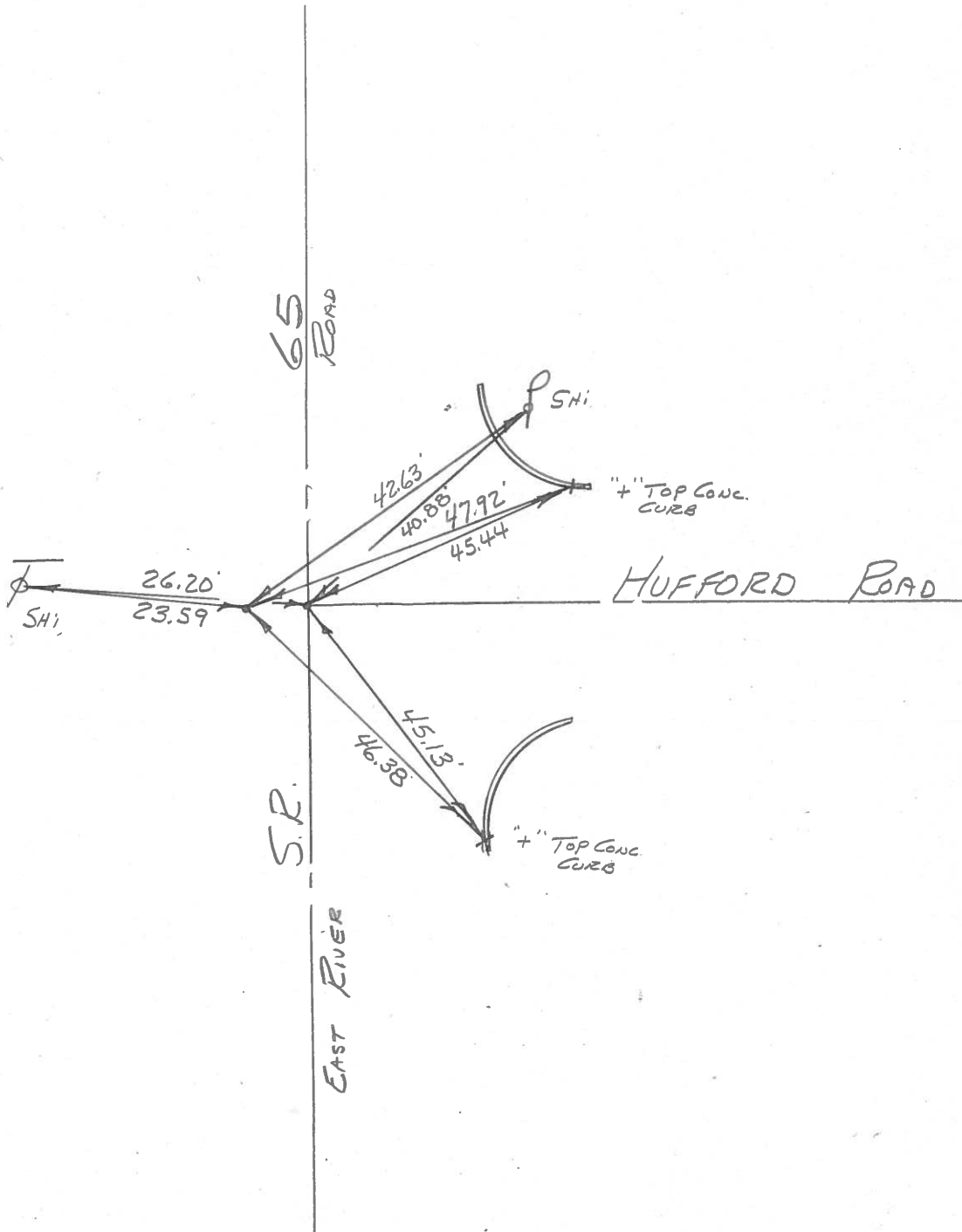
KNAPE

MEAD

# 31



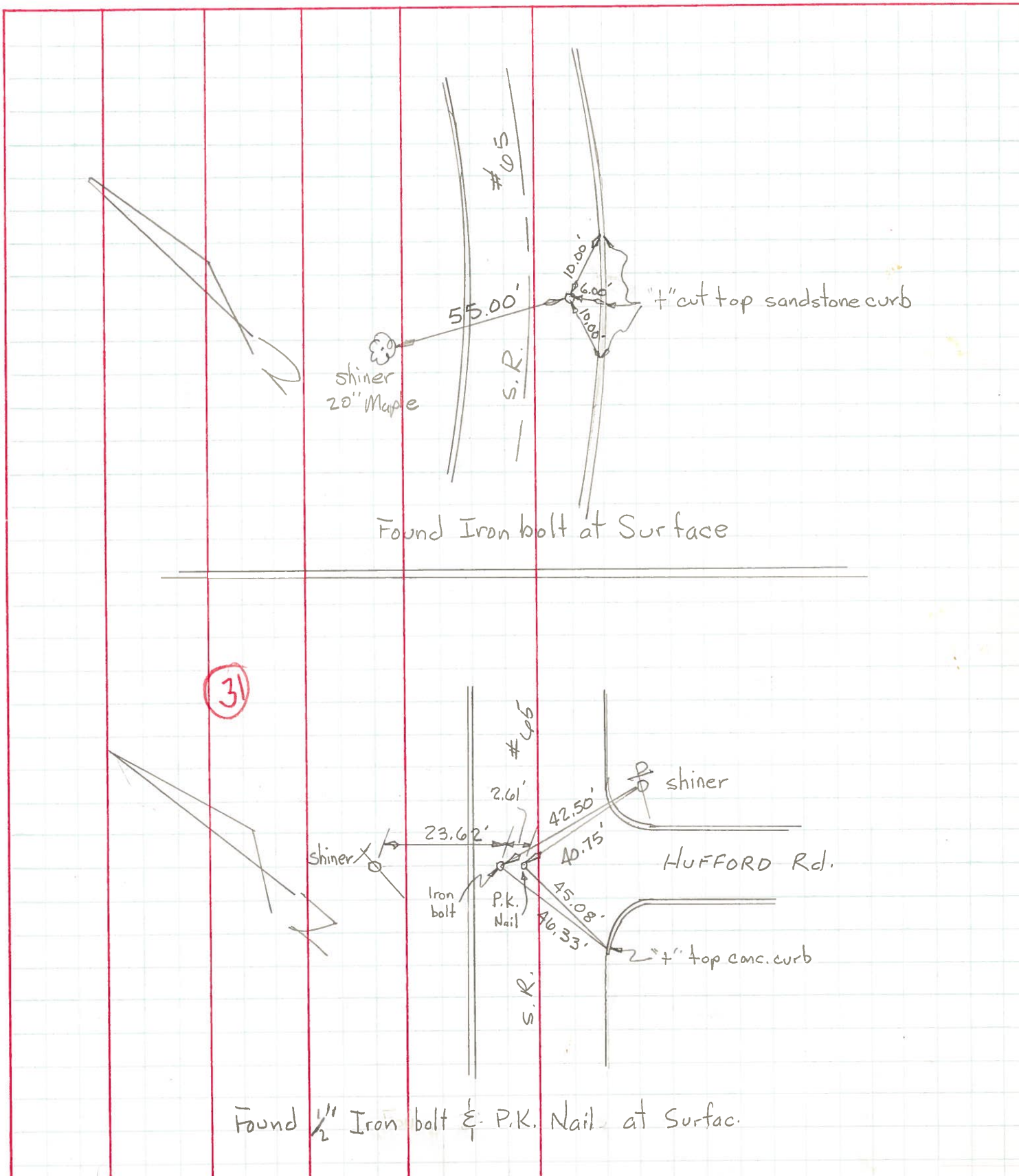
FD P.K. NAILS  
@ SURFACE



PERSONNEL	TITLE	PERSONNEL	TITLE
Granata			
Neuser			
Vanyo			
Jackson			

COUNTY Wood DATE Aug. 16, 1971  
 S. R. #65 WEATHER Fair  
 SEC. PERRYSBURG TWP TEMP. 80's

DESCRIPTION Reference Mon. on S.R. #65 JOB NO. \_\_\_\_\_



Found Iron bolt at Surface

31

Found 1/2" Iron bolt & P.K. Nail at Surface.

PERSONNEL TITLE PERSONNEL TITLE

COUNTY Wood DATE \_\_\_\_\_

S. R. 65 WEATHER \_\_\_\_\_

SEC. \_\_\_\_\_ TEMP \_\_\_\_\_

DESCRIPTION LEFT CENTER LINE RIGHT JOB NO.

Use Center Line for Trac. Cor.

Use Center Line for Trac. Cor.

58 South  
1/4 East of Iron Bolt 3/8" below Surface

Replaced R.P. Spt.  
8-29-65

33.58  
30.56  
33.36  
33.11  
R.K.

30

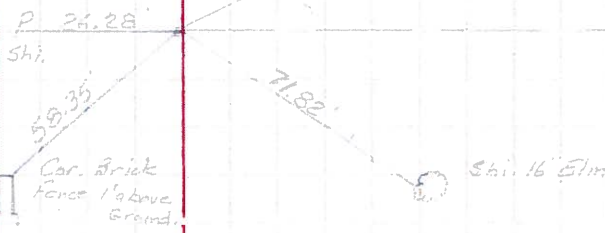
Fd. P.K.  
MON. BOX  
Replaced P.S.  
8-29-65



E. COVINGTON ST.

Fd. P.K.  
Replaced P.K.  
8-24-65

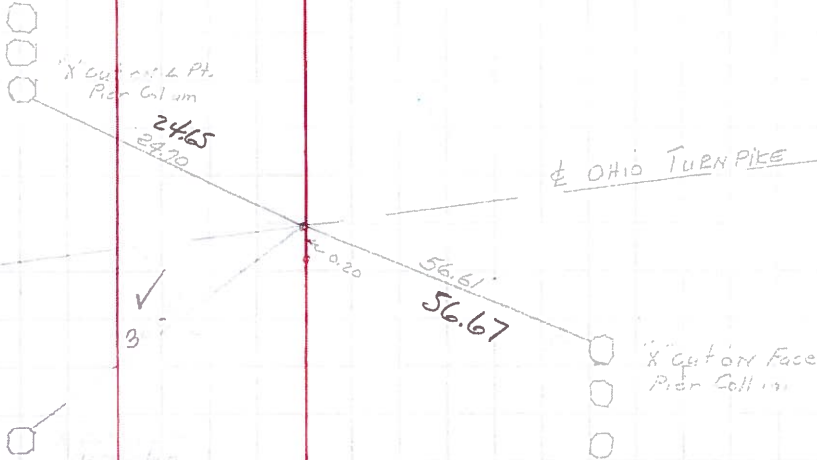
31



HUFFORD ST.

Fd. P.K.  
P.K. 0+20 West

31-A



OHIO TURNPIKE