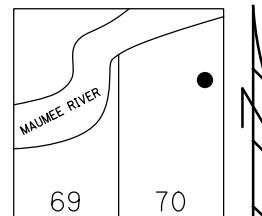


O.D.O.T. DISTRICT 2 SURVEY OFFICE (USE ONLY)

PERSONNEL \_\_\_\_\_ REFERENCE NO. 31 A SHEET 7 OF 21  
 NOTES AUBLE DATE 5-8-23 ROUTE SR 65  
 H.C. NIESE WEATHER CLOUDY COUNTY WOOD  
 R.C. AUBLE TEMP. 55° F TOWNSHIP PERRYSBURG  
 \_\_\_\_\_ SECTION RT 70  
 DWG BY AUBLE PID PAVING TRAIN T 3 12 MILE RESERVE

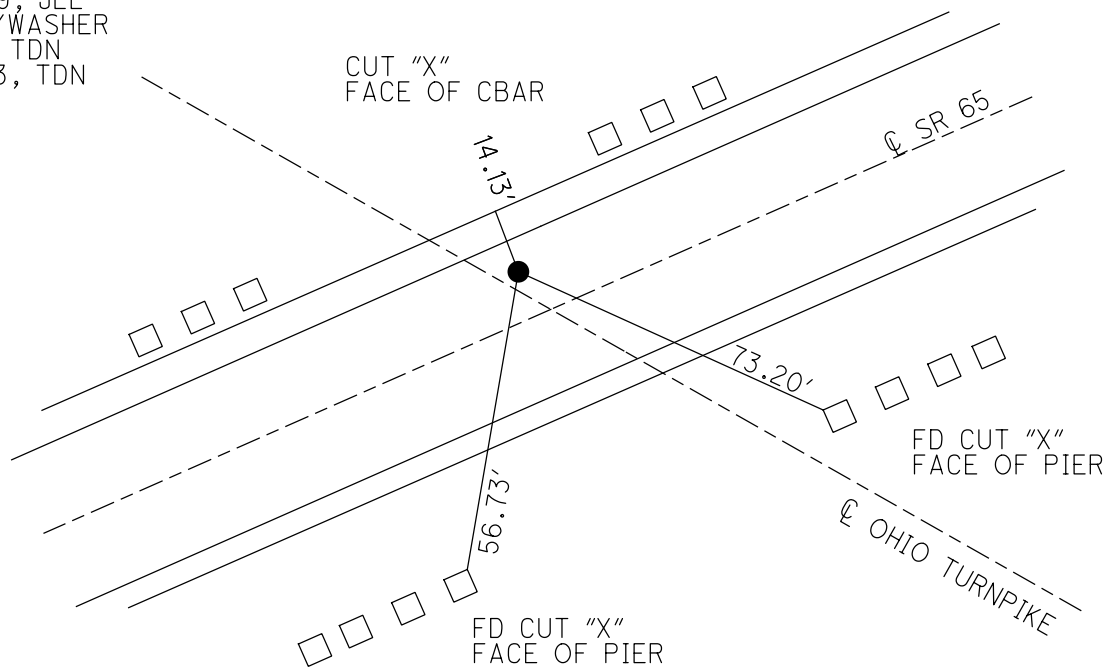
TYPE MONUMENT MAG/ WASHER  
 ON SURFACE - ~~BELOW~~ ON  
 OFFSET CL PAVEMENT 7.2' LT : RT  
4.7' TO LT EDGE PAVEMENT  
 STATION: 1070+08

HORIZ.DATUM: NAD83 2011 GEOID: NAVD88 2018  
 GRID: NORTHING: 698062.320 EASTING: 1667128.321



RECORD:  
 SET MAG/WASHER  
 10-28-05, SAH  
 FD MAG/WASHER  
 REFA31  
 11-7-2019, JLL  
 FD MAG/WASHER  
 5-8-23, TDN  
 10/12/23, TDN

NOTE: UNDER BRIDGE

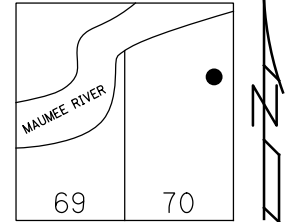


O.D.O.T. DISTRICT 2 SURVEY OFFICE (USE ONLY)

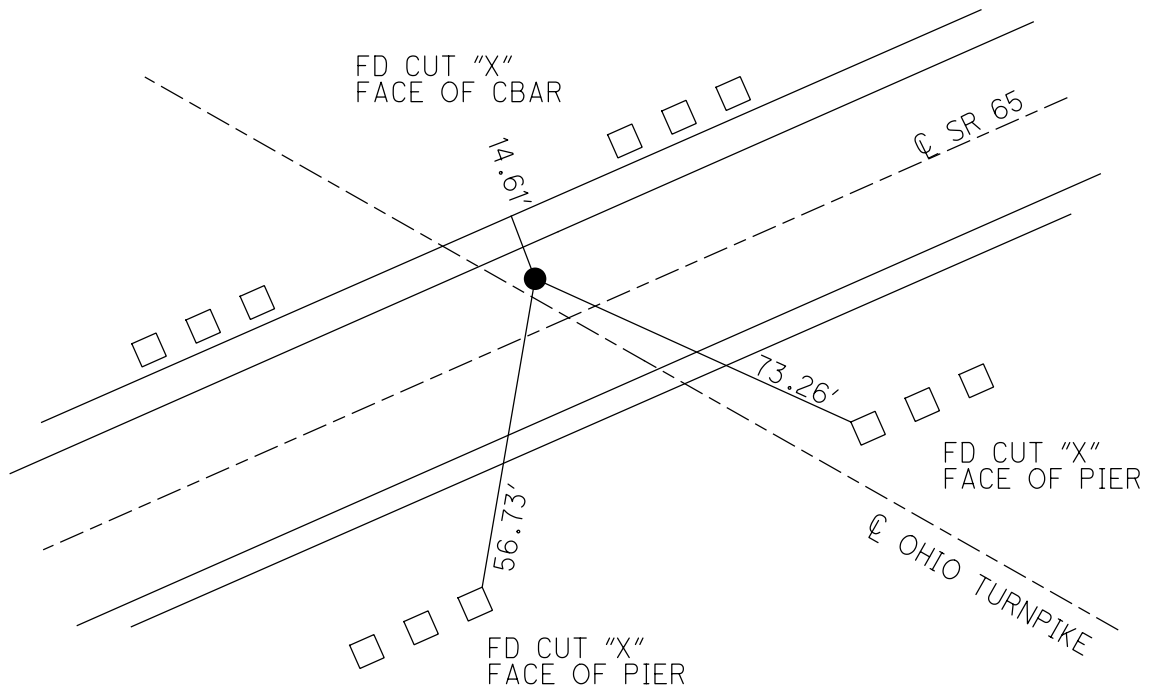
PERSONNEL \_\_\_\_\_ REFERENCE NO. 31 A SHEET 7 OF 8  
 NOTES HUSS DATE 9-13-05 ROUTE SR 65  
 H.C. HOMAN WEATHER SUNNY COUNTY WOOD  
 R.C. MIKLOVIC TEMP. 80° F TOWNSHIP PERRYSBURG  
 SECTION RT 70  
 DWG BY AUBLE PID 100460 T 3 12 MILE RESERVE

TYPE MONUMENT P.K.NAIL  
 ON SURFACE - ~~BELOW~~ ON  
 OFFSET  $\odot$  PAVEMENT 7.2' LT : ~~RT~~  
4.7' TO LT EDGE PAVEMENT  
 STATION: 1070+08

HORZ.DATUM: NAD83 (2011) GEOID: 2012A  
 GRID: NORTHING: 698062.32 EASTING: 1667128.3212



RECORD:  
 SET MAG/WASHER  
 10-28-05, SAH  
 FD MAG/WASHER  
 REFA31  
 11-7-2019, JLL



O.D.O.T. DISTRICT 2 SURVEY OFFICE

PERSONNEL

REFERENCE NO. 31-A

SHEET 8 OF 14

NOTES HUSS

DATE 9-13-05

ROUTE S.R. 65

H.C. HOMAN

WEATHER SUNNY

COUNTY WOOD

R.C. MIKLOVIC

TEMP. 80°

TOWNSHIP PERRYSBURG

SECTION RIVER TRACT

~~T 7 N R 11 E~~

~~78 W of 3, 12 mile Res.~~

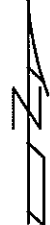
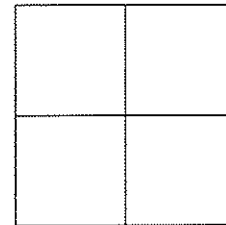
TYPE MONUMENT PK NAIL

ON SURFACE - ~~BELOW~~ ON

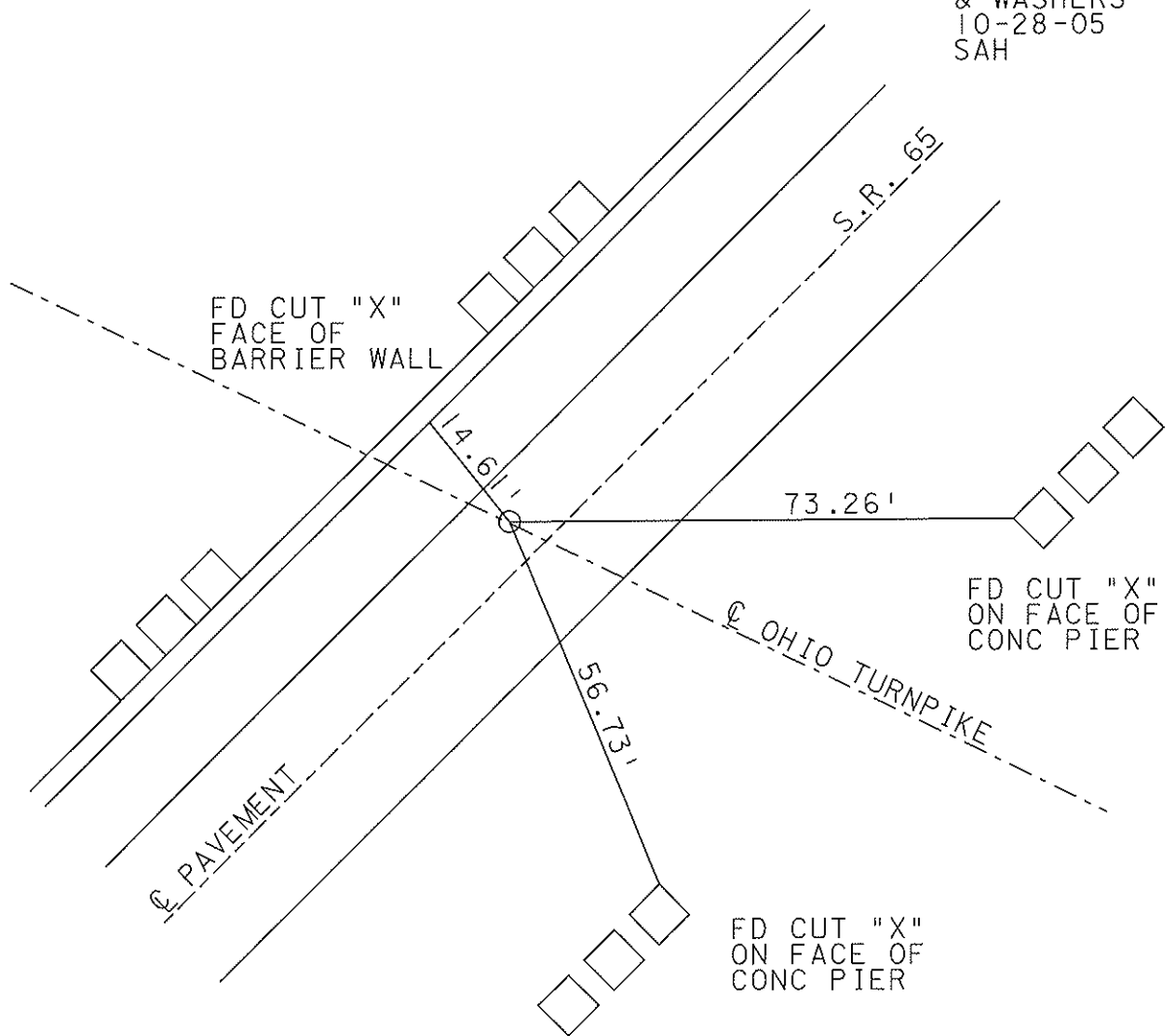
LEFT - ~~C PAVT~~ ~~RIGHT~~ 7.2' LT.

4.7' TO LT EDGE PAVEMENT

S.L.M. 1070+08



SET MAG NAILS  
& WASHERS  
10-28-05  
SAH



# O.D.O.T. DISTRICT 2 SURVEY OFFICE

PERSONNEL

REFERENCE NO. 31 A

SHEET      OF     

NOTES BARNHISEL

H.C. REED

R.C. Loehrke

HOFFMAN

DATE 5-3-88

WEATHER Partly Cloudy

TEMP. +55°

ROUTE 65

COUNTY WOOD

TOWNSHIP Perrysburg

SECTION River Tract 70

T 7 N R 11 E

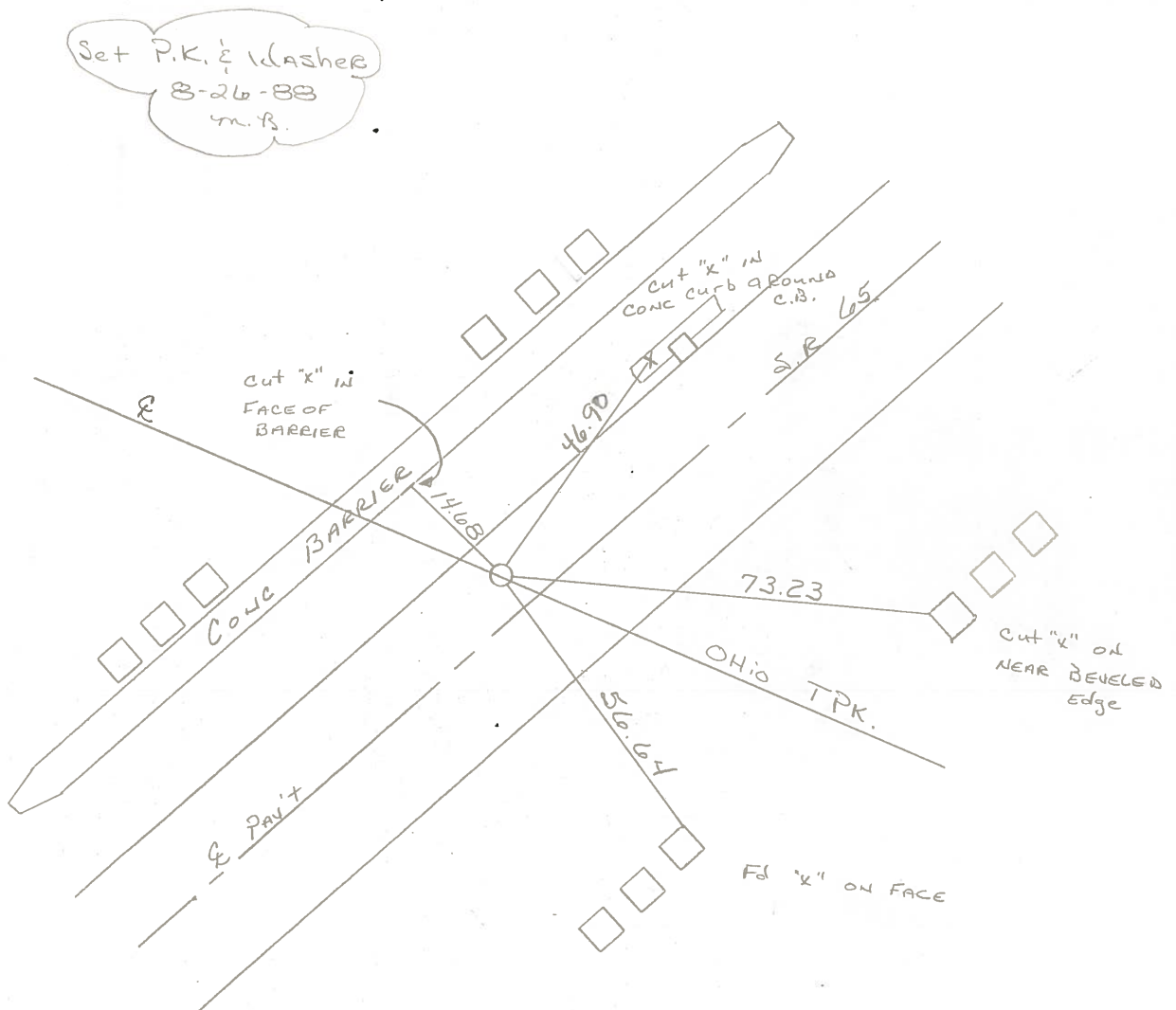
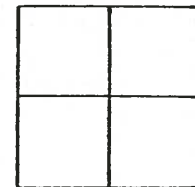
TYPE MONUMENT P.K. NAIL

ON SURFACE - ~~BELOW~~ yes

LEFT-~~C~~ PAV'T. - ~~RIGHT~~ 7.6

7.7 TO Lt EDGE PAVEMENT

S.L.M. 1070 + 08



County Wood S.R. 65

Date 13 Nov. 80

Township \_\_\_\_\_

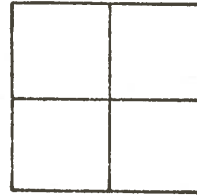
Weather Cloudy

Section \_\_\_\_\_

Temp. 48°

T N, R E

Personnel J. Stone



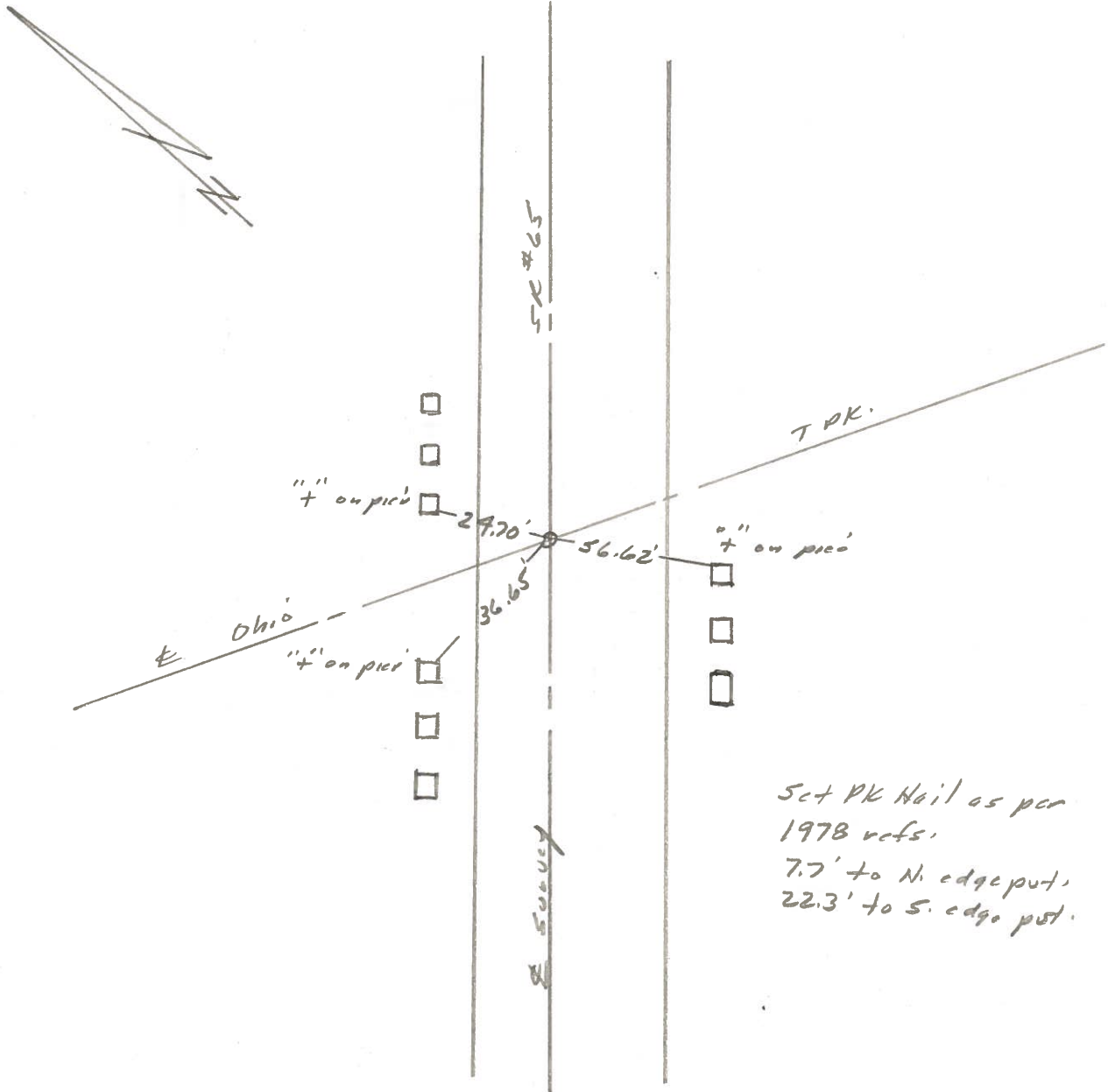
R. Michalak

P. Neuser

D. Curtis

H. Mead

REF. No. 31A



O.D.O.T. DISTRICT 2 SURVEY OFFICE

Sht. 15 of 20  
J.R.65

County WOOD

Date 7-31-78

Township PERRYSBURG

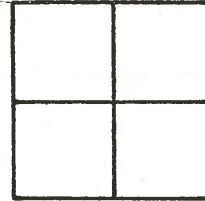
Weather CLEAR

Section \_\_\_\_\_

Temp. +76°

T N, R E

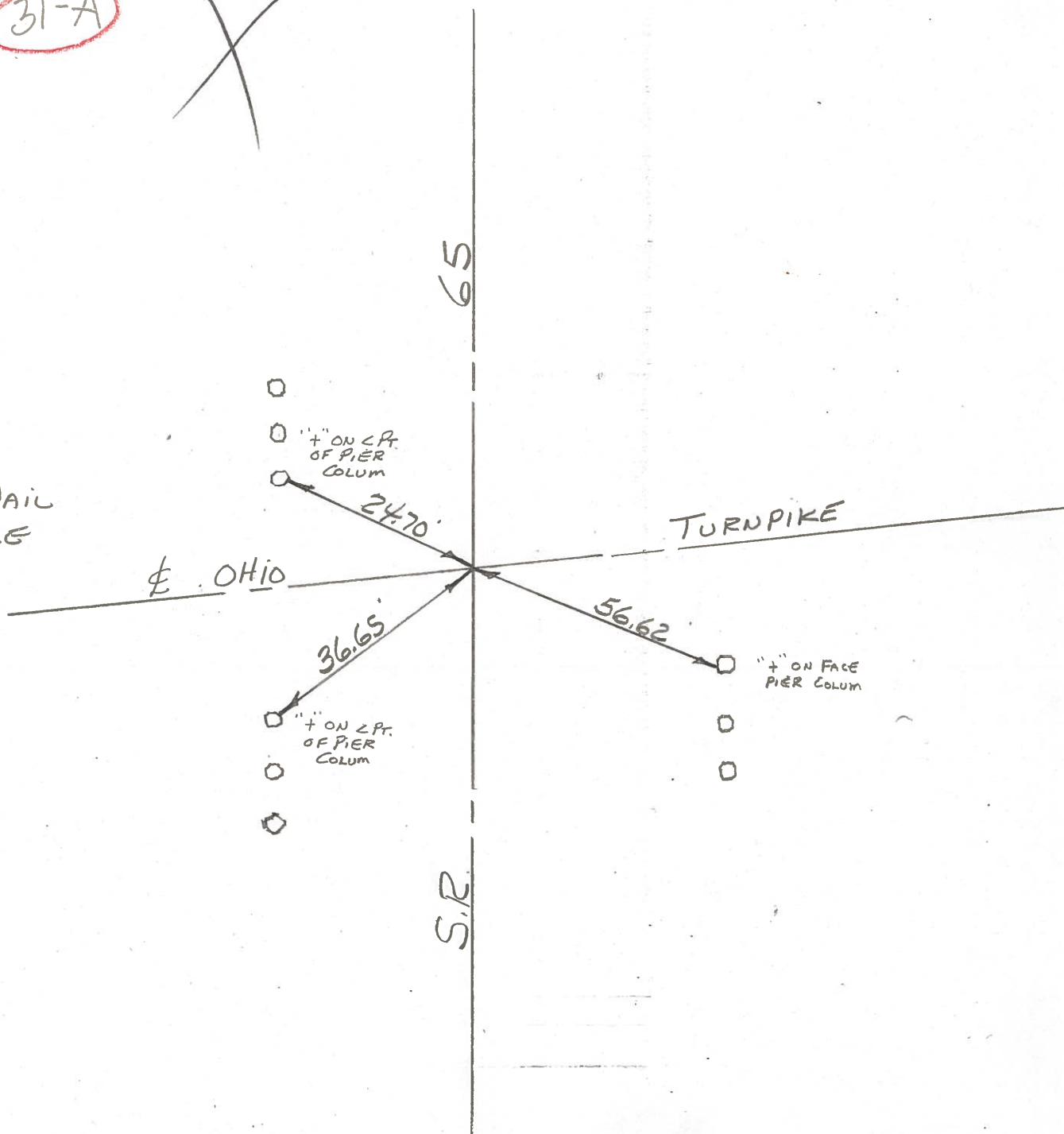
Personnel BURNSIDE  
SMITH  
BOWERS  
KNAPE  
MEAD



# 31-A



FD.P.K. NAIL  
@ SURFACE



PERSONNEL TITLE PERSONNEL TITLE

COUNTY Wood DATE \_\_\_\_\_

S. R. 65 WEATHER \_\_\_\_\_

SEC. \_\_\_\_\_ TEMP. \_\_\_\_\_

DESCRIPTION LEFT CENTER LINE RIGHT JOB NO. \_\_\_\_\_

Use Chain for Trac. Car.

2 1/2" Iron Spt.

Repl. P.K. 2 Spt. 0.25' East of Iron Bolt 3 1/2" below Surface

33.36  
33.11

7.23  
18.53  
30.56

P.K.

30

Stone Cor. Post.

67.25'

58.68'

R Shi.

59.65'

Shi. 12' Hickory

47.20'

R Shi.

Mon. Box. Replaced P.K. E 7955

40.85'

R P Spt.

P 24.28' Shi.

E HUFFORD ST.

31

59.35'

Car. Brick Fence 1/2 above Ground.

71.82'

Shi. 16' Elm

1' x cut on face Per Column

24.65  
24.70

E OHIO TURNPIKE

31-A

3

56.61  
56.67

X cut on face Pier Coll. in.

Fd. P.K. P.K. 0.20' West