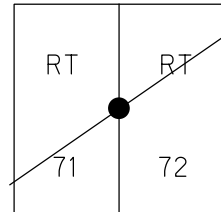


O.D.O.T. DISTRICT 2 SURVEY OFFICE (USE ONLY)

PERSONNEL _____ REFERENCE NO. 32 SHEET 9 OF 21
 NOTES AUBLE DATE 5-8-23 ROUTE SR 65
 H.C. NIESE WEATHER CLOUDY COUNTY WOOD
 R.C. AUBLE TEMP. 55° F TOWNSHIP PERRYSBURG
 DWG BY RHOADES PID PAVING TRAIN SECTION RT 71
 T 3 12 MILE RESERVE

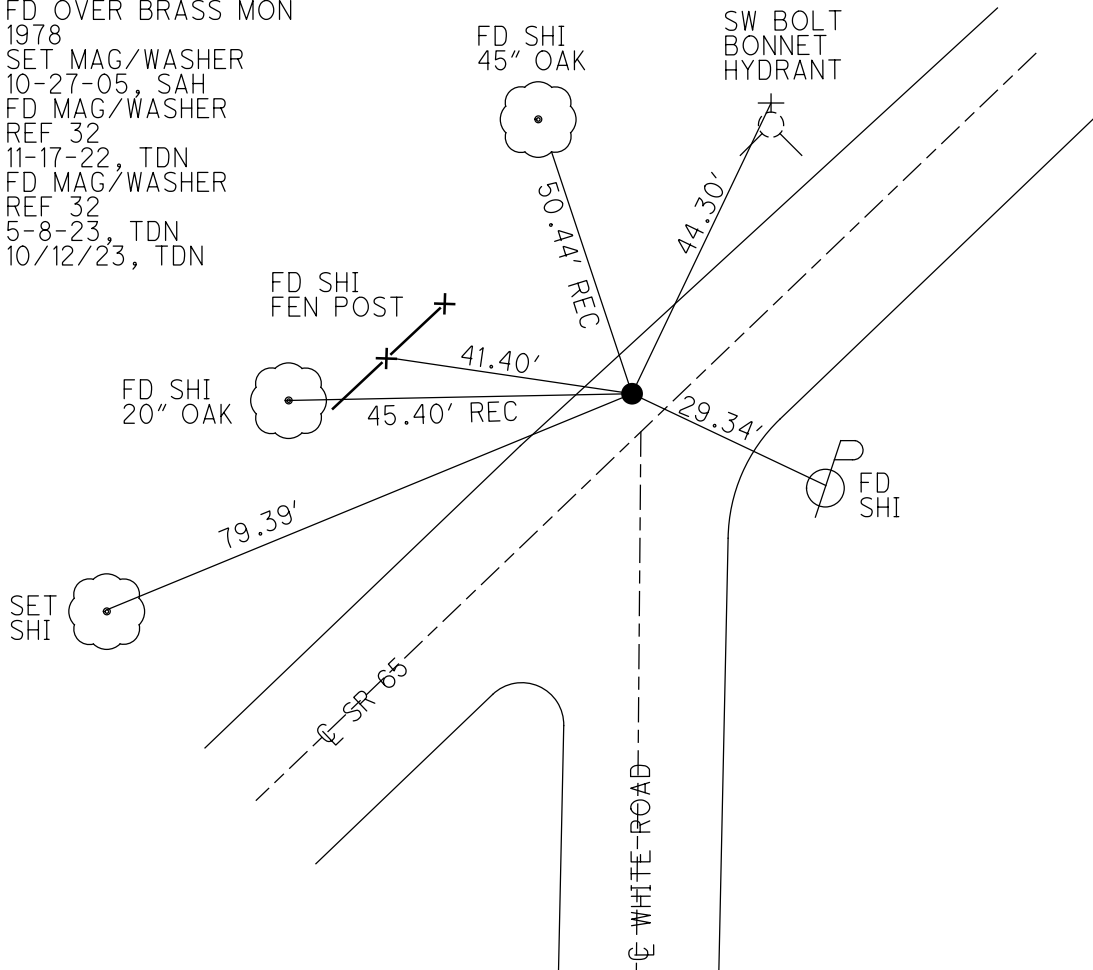
TYPE MONUMENT MAG/WASHER
 ON SURFACE - ~~BELOW~~ ON
 OFFSET CL PAVEMENT 4.8' LT : RT
4.8' TO LT EDGE PAVEMENT
 STATION: 1088+83



HORZ.DATUM: NAD83 2011 GEOID: NAVD88 2018
 GRID: NORTHING: 699328.185 EASTING: 1668510.815

RECORD: P.I.
 STA 85+02.65
 $\Delta = 0^\circ 05' RT$
 FD OVER BRASS MON
 1978
 SET MAG/WASHER
 10-27-05, SAH
 FD MAG/WASHER
 REF 32
 11-17-22, TDN
 FD MAG/WASHER
 REF 32
 5-8-23, TDN
 10/12/23, TDN

WOOD LPD:
 N: 521380.607
 E: 178673.538



O.D.O.T. DISTRICT 2 SURVEY OFFICE

PERSONNEL

REFERENCE NO. 32

SHEET 10 OF 14

NOTES

HUSS

DATE 9-13-05

ROUTE S.R. 65

H.C.

HOMAN

WEATHER SUNNY

COUNTY WOOD

R.C.

MIKLOVIC

TEMP. 80°

TOWNSHIP PERRYSBURG

SECTION RIVER TRACT

~~T-7-N~~ ~~R-11-E~~

Town 3, 12 mile Res.

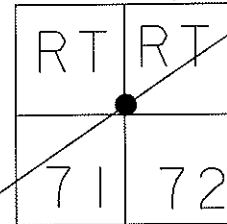
TYPE MONUMENT PK NAIL

ON SURFACE - ~~BELOW~~ ON

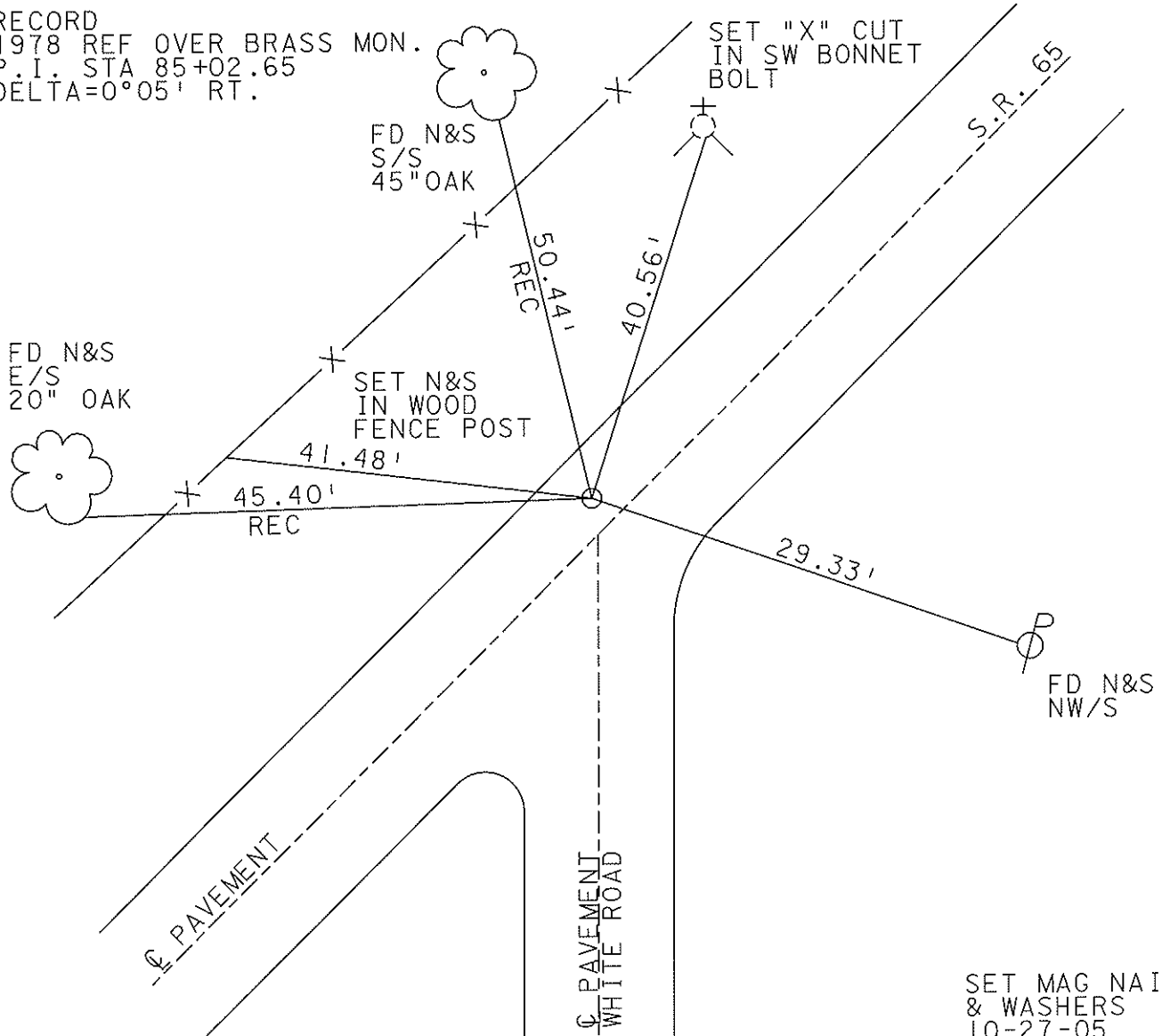
LEFT - ~~PAVT~~ - ~~RIGHT~~ 4.8' LT

4.8' TO LT EDGE PAVEMENT

S.L.M. 1088+83



RECORD
1978 REF OVER BRASS MON.
P.I. STA 85+02.65
DELTA=0°05' RT.



SET MAG NAILS
& WASHERS
10-27-05
SAH

O.D.O.T. DISTRICT 2 SURVEY OFFICE

PERSONNEL

REFERENCE NO. 32

SHEET OF

NOTES BARNHISEL

H.C. REED

R.C. Loehrke

HOFFMAN

DATE 5-3-88

WEATHER SUNNY

TEMP. + 58°

ROUTE 65

COUNTY WOOD

TOWNSHIP Perryburg

SECTION R.T. 71 & 72

T 7 N R 11 E

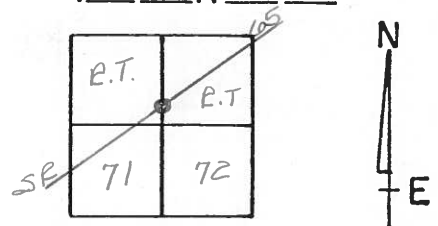
TYPE MONUMENT P.K. NAIL

ON SURFACE - ~~BELOW~~ yes

LEFT-~~C~~ PAV'T. - ~~RIGHT~~ 7.3

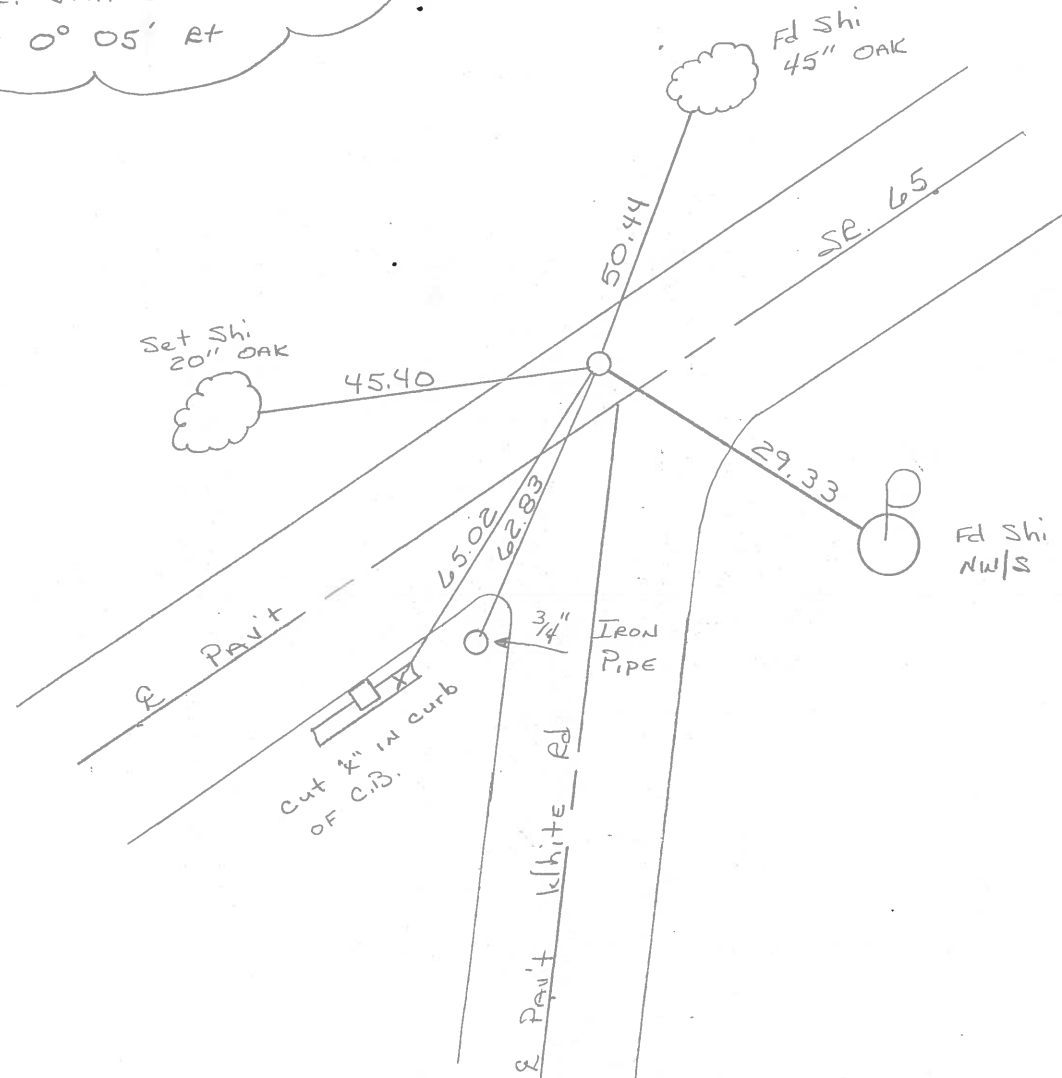
8.4 TO Lt EDGE PAVEMENT

S.L.M. 1088+83



Record
1978 Refs. over BEASS Mon.
P.I. STA. 85+02.65
 $\Delta = 0^{\circ} 05' \text{ RT}$

Set P.K. & washer
8-29-88
m.B.



O.D.O.T. DISTRICT 2 SURVEY OFFICE

SHEET OF

County Wood S.R. 65

Date 13 Nov. 80

Township Perryburg

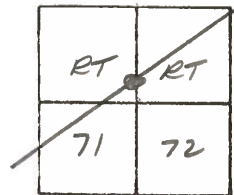
Weather Cloudy

Section RT 71 & 72

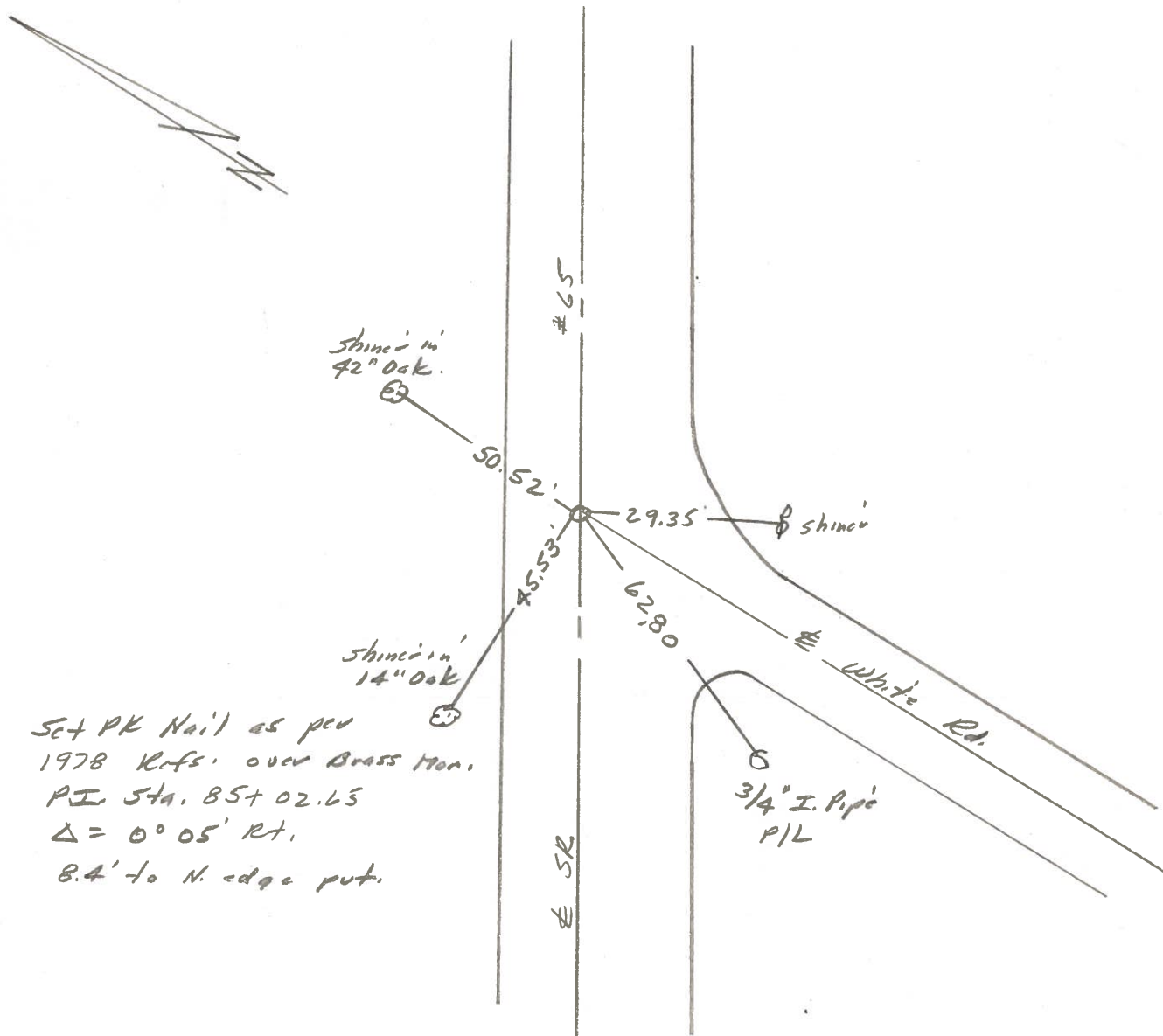
Temp. 49°

T N, R E

Personnel I. Stone
R. Michalak
P. Neuser
D. Curtis
H. Mead



REF. No. 32



Set PK Nail as per
1978 Refs. over Brass Mon.
PI Sta. 85+02.65
 $\Delta = 0^{\circ} 05' RT.$
8.4' to N. edge put.

O.D.O.T. DISTRICT 2 SURVEY OFFICE

Sht. 16 of 20
S-R.65

County WOOD

Date 7-31-78

Township PERRYSBURG

Weather CLEAR

Section _____

Temp. +76°

T N, R E

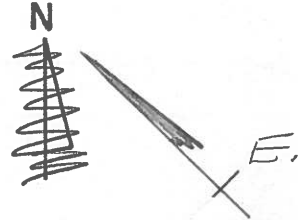
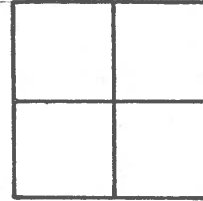
Personnel BURNSIDE

SMITH

BOWERS

KNAPE

MEAD



#32



NEAREST
EDGE BOTTOM
FLANGE FIRE
HYD.

SHI. IN
42' OAK

40.20'
65'

50.52'

ROAD

29.35'

FD. BRASS PLATE
OF STATE RW
MON. (2" DEEP)

8.2' TO N. CURB

P.I. STA = BS + 02.65
 $\Delta = 0^{\circ} - 05'$

45.53'

SHI. IN
14' OAK

S.R.
EAST RIVER

62.80'

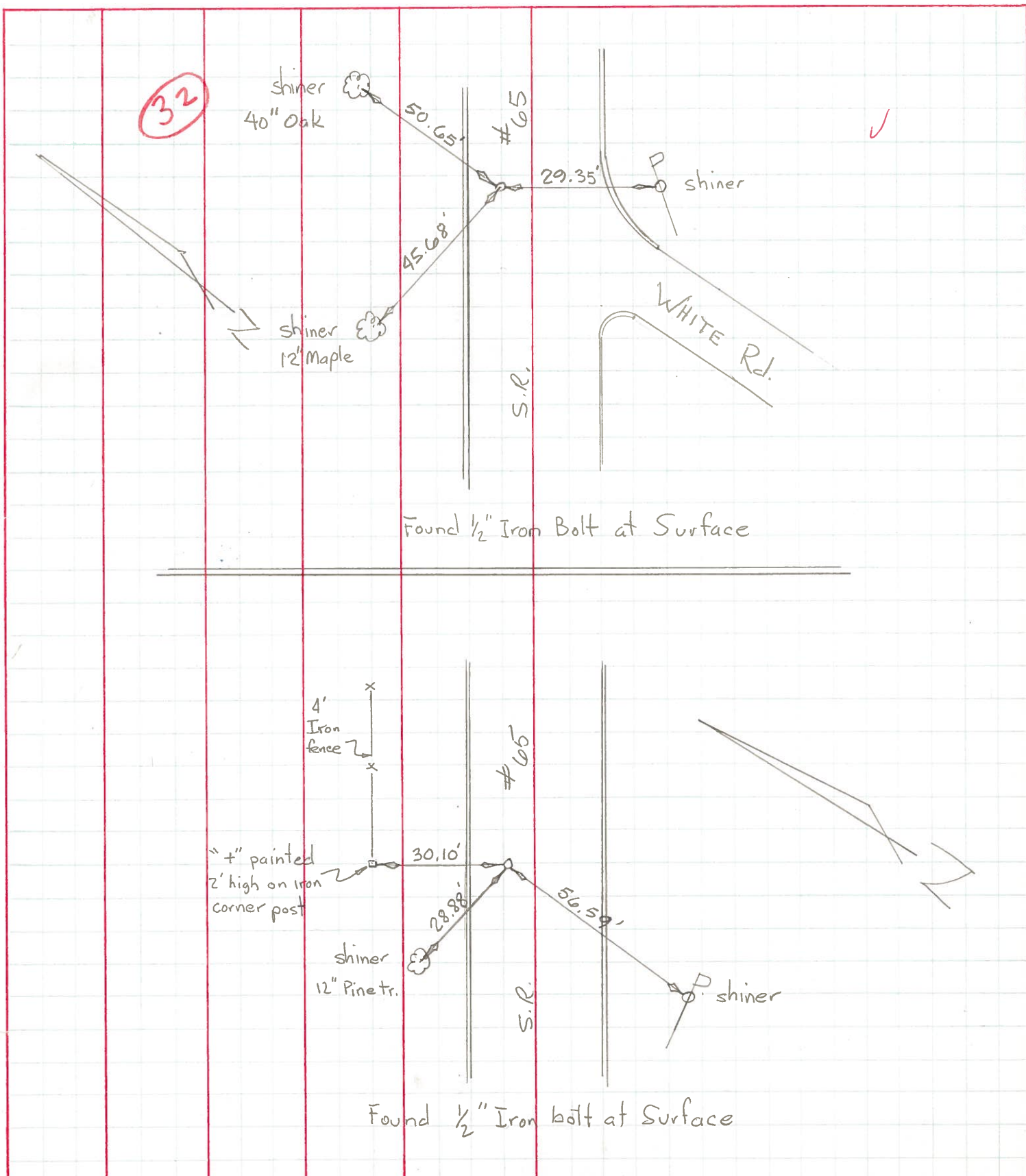
WHITE ROAD

FD 3/4" I. PIPE
FOR P.M.K.R.

PERSONNEL	TITLE	PERSONNEL	TITLE
Granata			
Neuser			
Vanyo			
Jackson			

COUNTY Wood DATE Aug. 18, 1971
 S. R. #65 WEATHER P. Cloudy
 SEC. _____ TEMP. 80°

DESCRIPTION Reference Mon. on S.R. #65 JOB NO. _____



PERSONNEL TITLE PERSONNEL TITLE

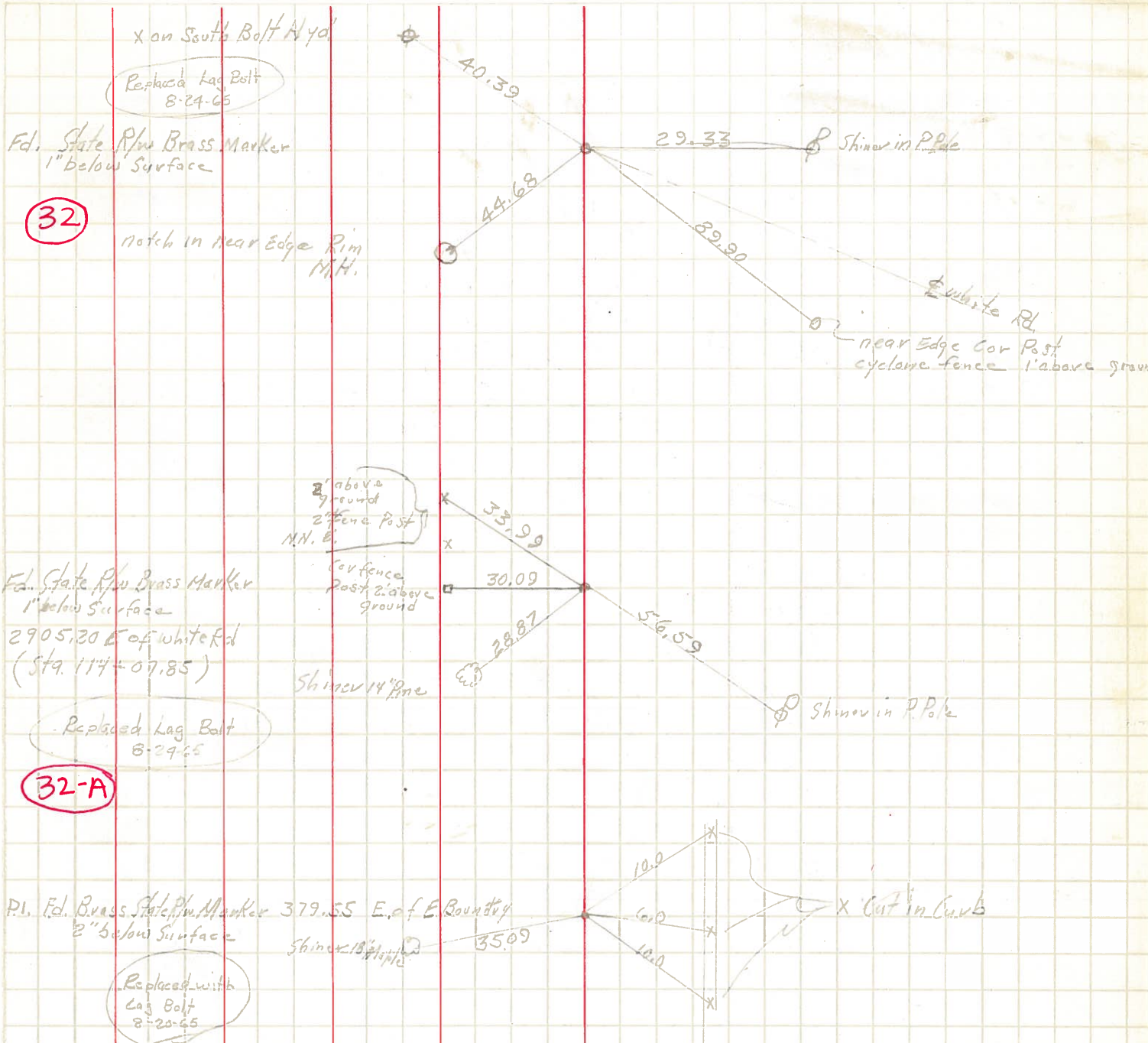
COUNTY Wood DATE 8/24/65

Silvester _____

S. R. 65 WEATHER _____

SEC. _____ TEMP. _____

DESCRIPTION LEFT CENTER LINE RIGHT JOB NO. _____



PERSONNEL TITLE PERSONNEL TITLE

COUNTY Wood

DATE

S. R. #65

WEATHER

SEC. "C" Rossford

TEMP.

DESCRIPTION

LEFT

CENTER LINE

RIGHT

JOB NO.

778

Sta. 3479.55
P.I. $\Delta = 12^{\circ}50'$ Lt.
R.E. spike (set
over original stone)

12" maple

35.9'

70'

Shiner in wild cherry

779

Sta. 0-49.5

Conc post

49.5' to stone

70.0'

50.35'

Nail on E.W. E. line of
E. Boundary st.

Iron pin E. Boundary st
pin leaning North

Nail on line 00.2' E. of I. pin

#

780

Sta. 85 to 2.7
P.I. (inter White Ed.)
x-in pave.

At old stone

41.05'

52.85'

90.00'

Iron post in
conc.