

O.D.O.T. DISTRICT 2 SURVEY OFFICE (USE ONLY)

PERSONNEL

REFERENCE NO. 32 C

SHEET 12 OF 21

NOTES AUBLE

DATE 5-8-23

ROUTE SR 65

H.C. NIESE

WEATHER CLOUDY

COUNTY WOOD

R.C. AUBLE

TEMP. 55° F

TOWNSHIP PERRYSBURG

SECTION RT 75

DWG BY RHOADES

PID PAVING TRAIN

T 3 12 MILE RESERVE

TYPE MONUMENT MAG/WASHER

ON SURFACE - ~~BELOW~~ ON

OFFSET C PAVEMENT 8.5' LT : ~~RT~~

3.7' TO LT EDGE PAVEMENT

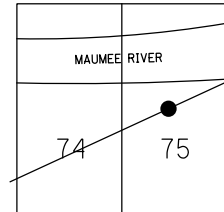
STATION: 1151+22

HORZ.DATUM: NAD83 2011

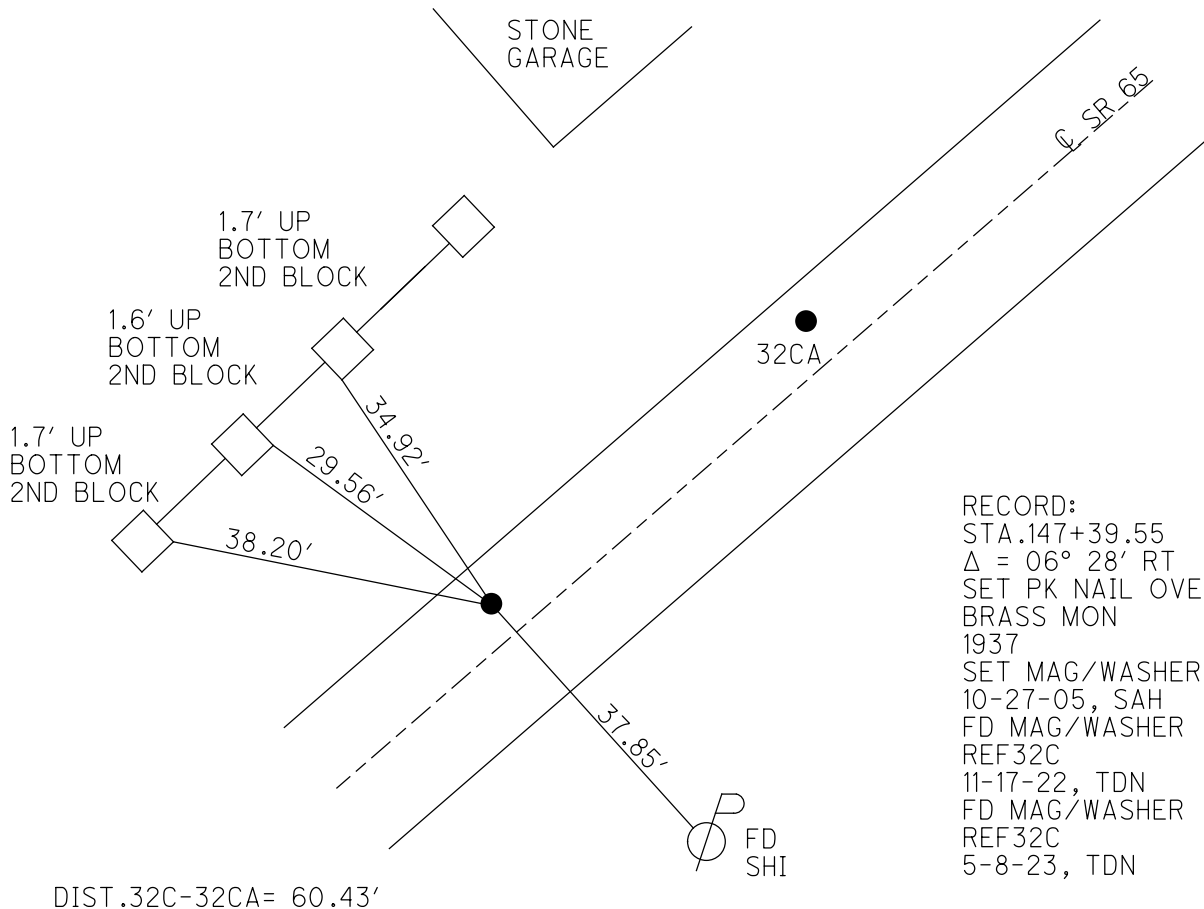
GEOID: NAVD88 2018

GRID: NORTHING: 703542.789

EASTING: 1673106.583



WOOD LPD:
N: 525655.669
E: 183213.509



RECORD:
STA. 147+39.55
 $\Delta = 06^\circ 28' RT$
SET PK NAIL OVER
BRASS MON
1937
SET MAG/WASHER
10-27-05, SAH
FD MAG/WASHER
REF 32C
11-17-22, TDN
FD MAG/WASHER
REF 32C
5-8-23, TDN

O.D.O.T. DISTRICT 2 SURVEY OFFICE

PERSONNEL

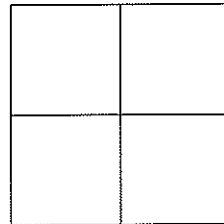
REFERENCE NO. 32-C SHEET 13 OF 14

NOTES _____
 H.C. HUSS
 R.C. HOMAN

DATE 9-14-05
 WEATHER SUNNY
 TEMP. 76°

ROUTE S.R. 65
 COUNTY WOOD
 TOWNSHIP PERRYSBURG
 SECTION RIVER TRACT
~~T7N R11E~~
 Towal 3, 12 mile Res.

TYPE MONUMENT _____ PK NAIL
 ON SURFACE - ~~BELOW~~ _____ ON
 LEFT - ~~Q PAVT~~ _____ RIGHT _____
 _____ TO LT EDGE PAVEMENT A 3.7' B 6.2'
 S.L.M. _____ A 1151+22 B 1151+82

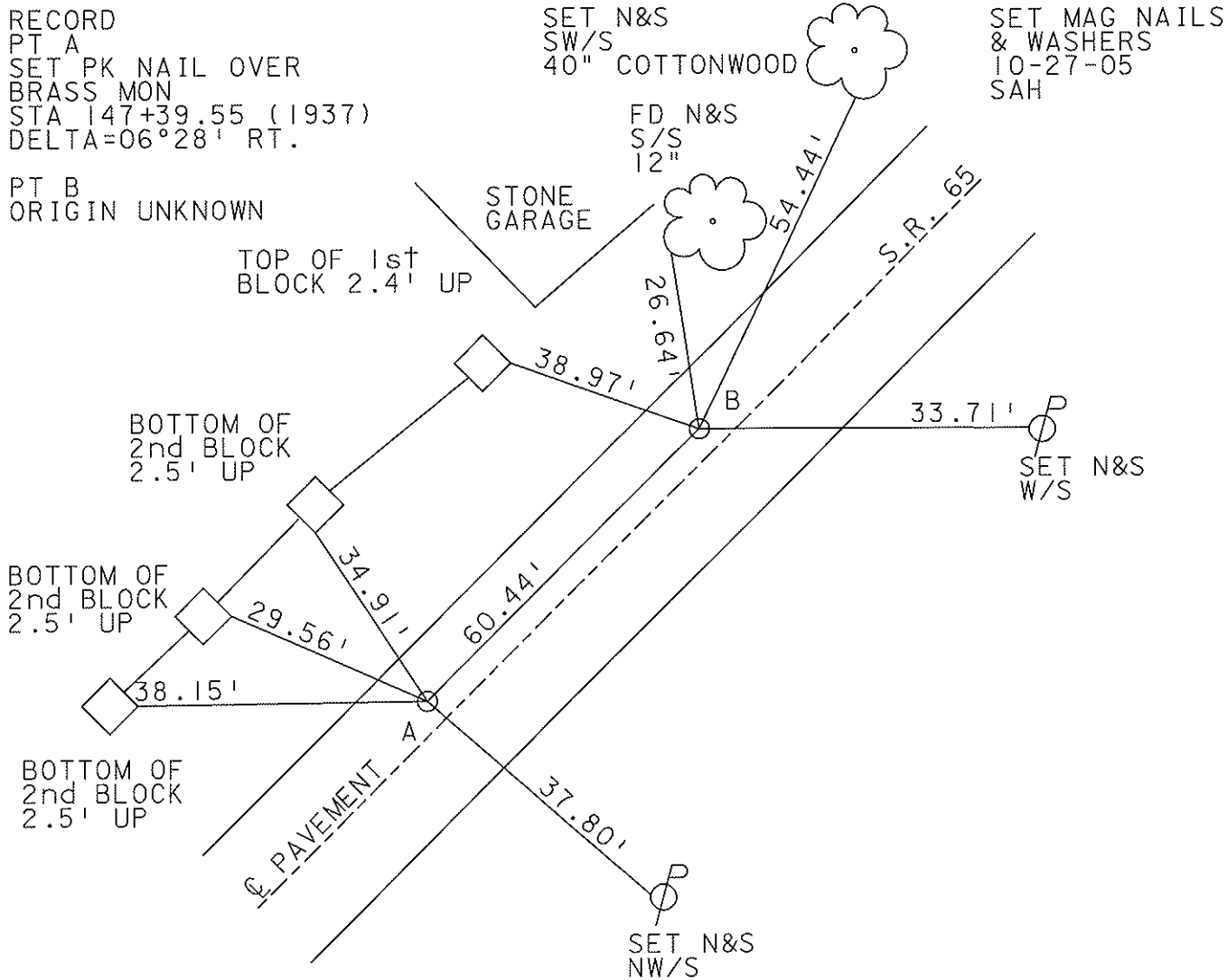


RECORD
 PT A
 SET PK NAIL OVER
 BRASS MON
 STA 147+39.55 (1937)
 DELTA=06°28' RT.

SET N&S
 SW/S
 40" COTTONWOOD

SET MAG NAILS
 & WASHERS
 10-27-05
 SAH

PT B
 ORIGIN UNKNOWN



O.D.O.T. DISTRICT 2 SURVEY OFFICE

PERSONNEL

REFERENCE NO. 32 C

SHEET _____ OF _____

NOTES BARNHISEL

H.C. Reed

DATE 5-3-88

ROUTE 65

R.C. Koehrke

WEATHER SUNNY

COUNTY WOOD

HOFFMAN

TEMP. +62°

TOWNSHIP Perryburg

SECTION R.T. 75th

T. 8 N. R. 11 E

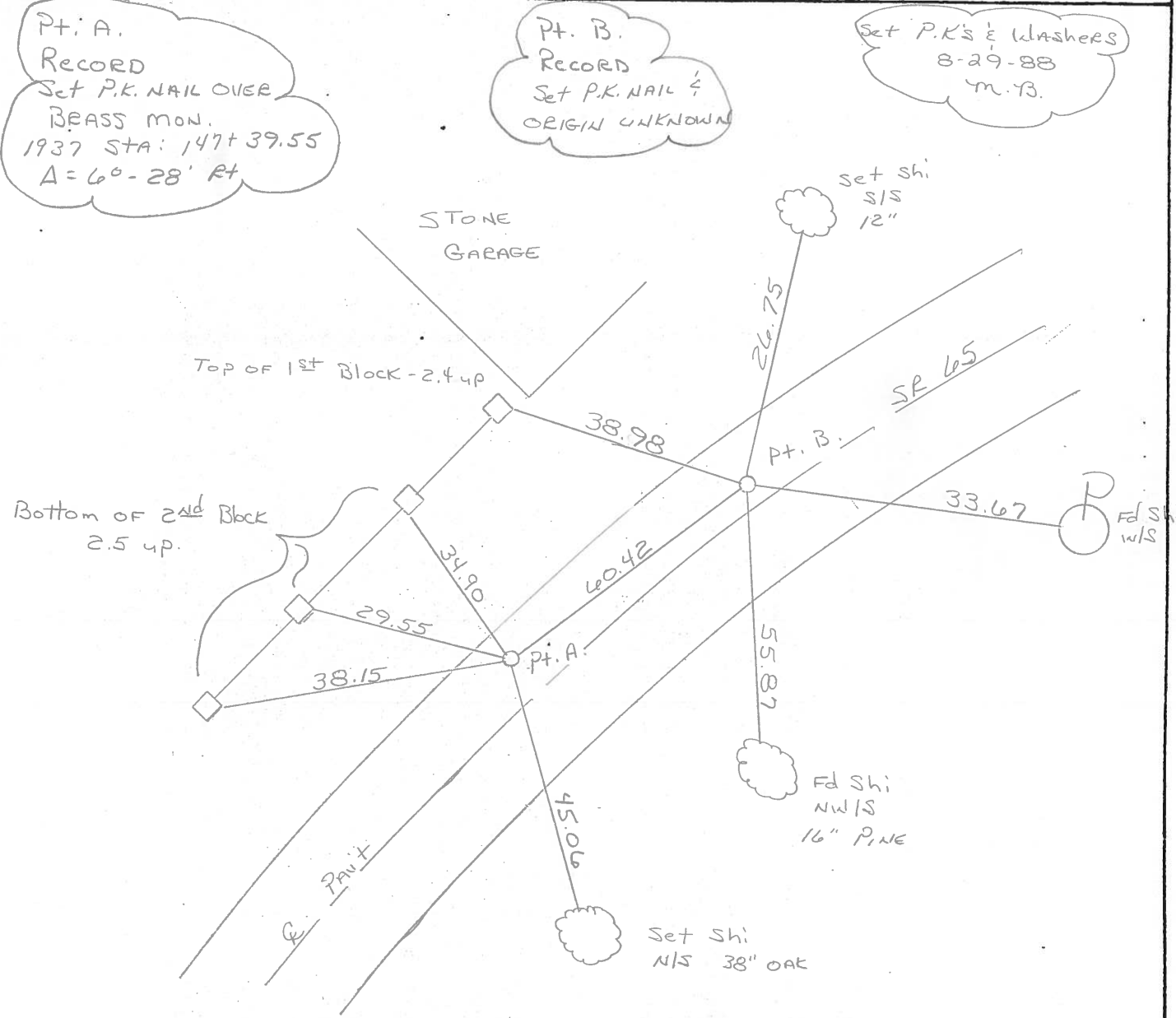
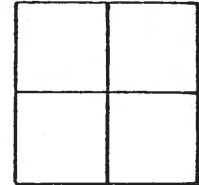
TYPE MONUMENT P.K. NAILS

ON SURFACE - BELOW yes

LEFT - C PAV'T. - RIGHT Pt A 8.9 Pt B 6.4

(A) 6.5
(B) 9.5 TO 4 EDGE PAVEMENT

S.L.M. 1151+22



Pt. A.
RECORD
Set P.K. NAIL OVER
BRASS MON.
1937 STA: 147+39.55
Δ = 60° - 28' Rt

Pt. B.
RECORD
Set P.K. NAIL &
ORIGIN UNKNOWN

Set P.K's & Washers
8-29-88
M.B.

O.D.O.T. DISTRICT 2 SURVEY OFFICE

SHEET _____ OF _____

County Wood S.R. 65

Date 17 Nov. 80

Township _____

Weather Cloudy

Section _____

Temp. 37°

T N, R E

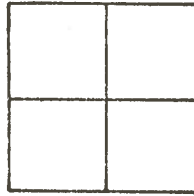
Personnel L. Stone

R. Michalak

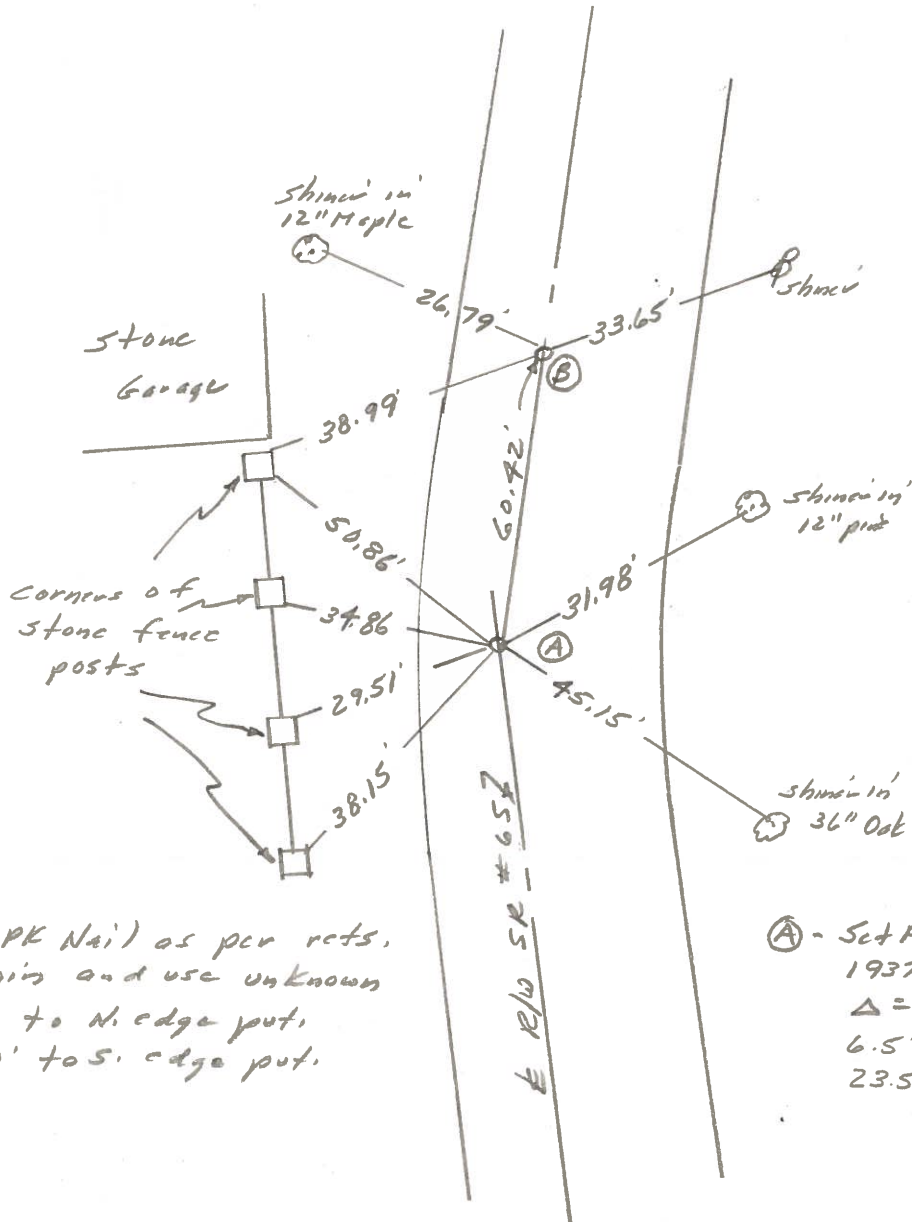
P. Neuser

D. Curtis

H. Mead



REF. NO. 32 C



ⓑ - Set PK Nail as per rets.
Origin and use unknown
9.5' to N. edge put.
21.0' to S. edge put.

Ⓐ - Set PK Nail over Brass Mon.
1937 Sta. 147+39.55
Δ = 6° 28' Rt.
6.5' to N. edge put.
23.5' to S. edge put.

O.D.O.T. DISTRICT 2 SURVEY OFFICE

Sht. 19 of 20
S.R. 65

County WOOD

Date 8-1-78

Township PERRYSBURG

Weather CLEAR

Section _____

Temp. +73°

T N, R E

Personnel BURNSIDE
BOWERS

32-C

