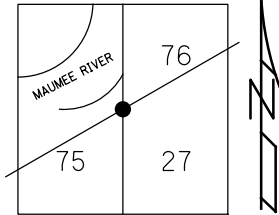


O.D.O.T. DISTRICT 2 SURVEY OFFICE (USE ONLY)

PERSONNEL _____ REFERENCE NO. 32 CC SHEET 15 OF 21
 NOTES AUBLE DATE 5-8-23 ROUTE SR 65
 H.C. NIESE WEATHER CLOUDY COUNTY WOOD
 R.C. AUBLE TEMP. 55° F TOWNSHIP PERRYSBURG
 DWG BY RHOADES PID PAVING TRAIN T 3 12 MILE RESERVE

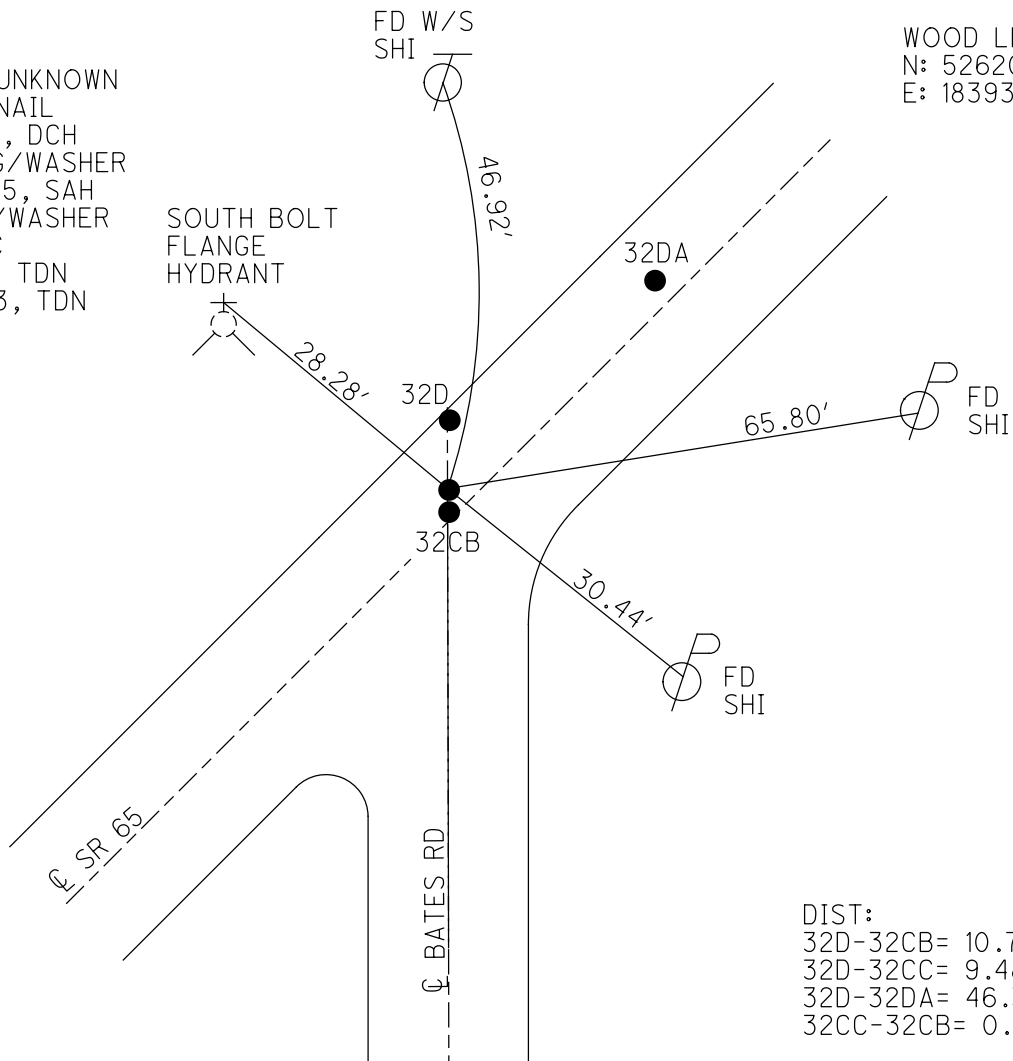
TYPE MONUMENT MAG/WASHER
 ON SURFACE - ~~BELOW~~ ON
 OFFSET $\text{\textcircled{C}}$ PAVEMENT 1.2' LT : RT
9.9' TO LT EDGE PAVEMENT
 STATION: 1160+35



HORIZ. DATUM: NAD83 2011 GEOID: NAVD88 2018
 GRID: NORTHING: 704084.736 EASTING: 1673837.378

RECORD:
 ORIGIN UNKNOWN
 FD P.K.NAIL
 9/14/05, DCH
 SET MAG/WASHER
 10/27/05, SAH
 FD MAG/WASHER
 REF 32CC
 5/8/23, TDN
 10/12/23, TDN

WOOD LPD:
 N: 526207.235
 E: 183937.122



DIST:
 32D-32CB= 10.71'
 32D-32CC= 9.48'
 32D-32DA= 46.33'
 32CC-32CB= 0.91'

O.D.O.T. DISTRICT 2 SURVEY OFFICE

PERSONNEL

REFERENCE NO. 32-D

SHEET 14 OF 14

NOTES

HUSS

DATE

9-14-05

ROUTE

S.R. 65

H.C.

NUHFER

WEATHER

SUNNY

COUNTY

WOOD

R.C.

HOMAN

TEMP.

78°

TOWNSHIP PERRYSBURG

SECTION RIVER TRACT

~~T7-N R11-E~~

Toward 3, 12 mile Res.

TYPE MONUMENT

A- IRON PIN B-SM RR SPIKE
C & D PK NAILS

ON SURFACE - ~~BELOW~~

A-6" DOWN

B, C, & D ON SURFACE

LEFT - ~~C PAVT~~ - RIGHT

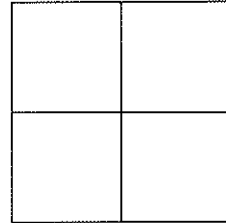
A-10.9' LT B-1.2' LT
C-1.2' LT D-0.3' LT

TO LT EDGE PAVEMENT

A-1.0' B-10.9'
C-9.9' D-10.8'

S.L.M.

A 1160+35



RECORD

PT A SET PK NAIL @ BATES RD
STA 156+49.15 (1937)
DELTA= 0°0'

SET MAG NAILS
& WASHERS
10-27-05
SAH

RECORD PT B
STA 157+0085

PT C & D
ORIGIN UNKNOWN

A=38.35'
B=23.26'
C=46.94'
D=47.76'

SET "X" CUT
ON SE BOLT
OF LOWER FLANGE

A=18.11'
B=48.91'
C=27.40'
D=28.28'

FD N&S
S/S

S.R. 65

FD N&S
NW/S

A=63.61'
B=24.23'
C=65.82'
D=66.10'

FD N&S
NW/S

A=36.17'
B=47.54'
C=30.44'
D=30.01'

PAVEMENT

BATES RD

DISTANCE A-B=46.41'
DISTANCE C-D=0.91'

O.D.O.T. DISTRICT 2 SURVEY OFFICE

PERSONNEL

REFERENCE NO. 32 D

SHEET OF

NOTES BARNHISEL

H.C. Reed

DATE 5-3-88

ROUTE 65

R.C. Loehrke

WEATHER SUNNY

COUNTY Wood

HOFFMAN

TEMP. +62°

TOWNSHIP Pereysburg

SECTION R.T. 75 & 76

T 8 N R 11 E

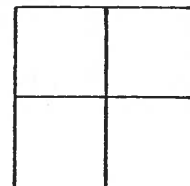
TYPE MONUMENT Pt A P.K. Pt B. 2" lead plug

ON SURFACE - BELOW surface 4" below

LEFT - 0 PAV'T. - RIGHT 11.1 1.0

TO Lt EDGE PAVEMENT

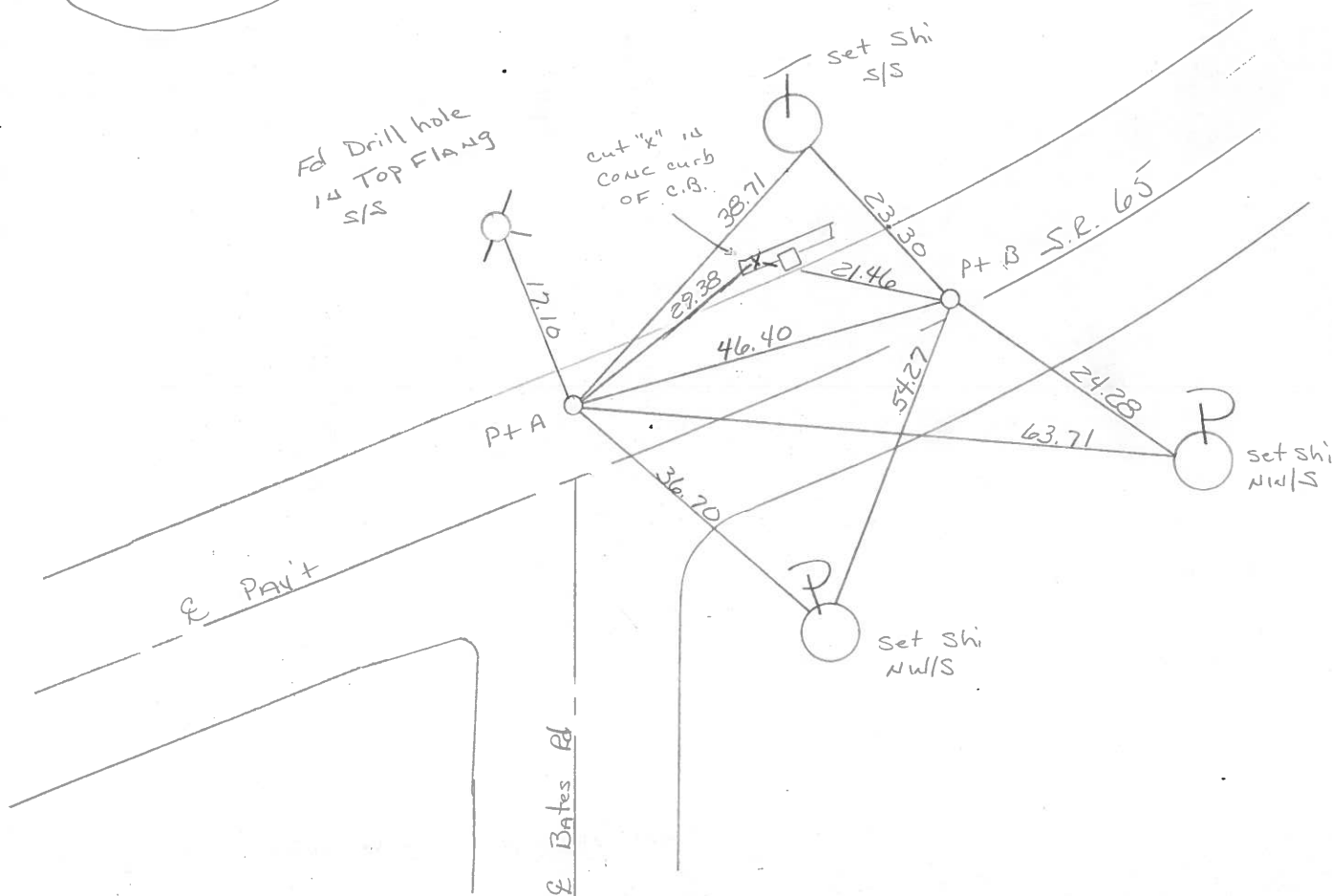
S.L.M. Pt A 1160+35



Record Pt. "A"
Set P.K. NAIL & BATES RD
1937 STA: 156+49.15
Δ = 0°-0'

Pt. "A" Set P.K. & Washer
Pt. "B" Set sm RR Spk
8-29-88
m.B.

Record Pt. "B"
STA: 157+00.85



County Wood S.R. 65

Date 17 Nov. 80

Township _____

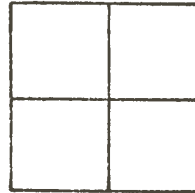
Weather Cloudy

Section _____

Temp. 57°

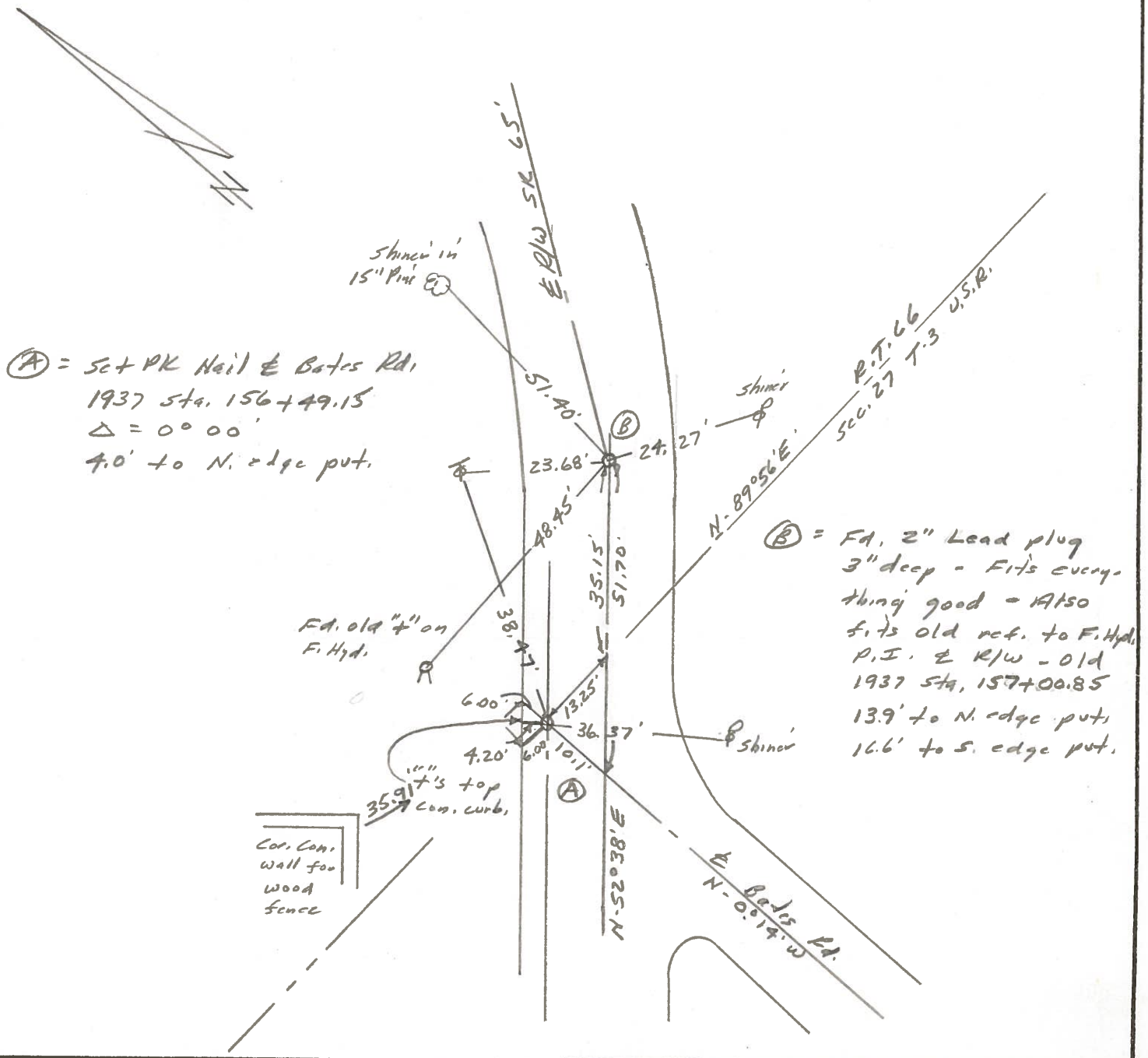
T N, R E

Personnel J. Stone



R. Michalak
P. Neusev
D. Curtis
H. Mead

REF. NO. 32D



OD.O.T. DISTRICT 2 SURVEY OFFICE

Sht. 20 of 20
S.R. 65

County WOOD

Date 8-1-78

Township FERRYSBURG

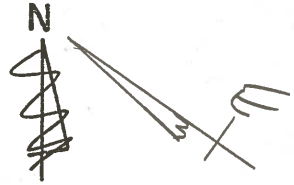
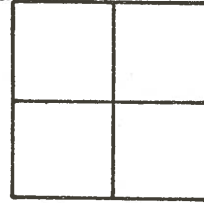
Weather CLEAR

Section _____

Temp. +78°

T N, R E

Personnel BURNSIDE

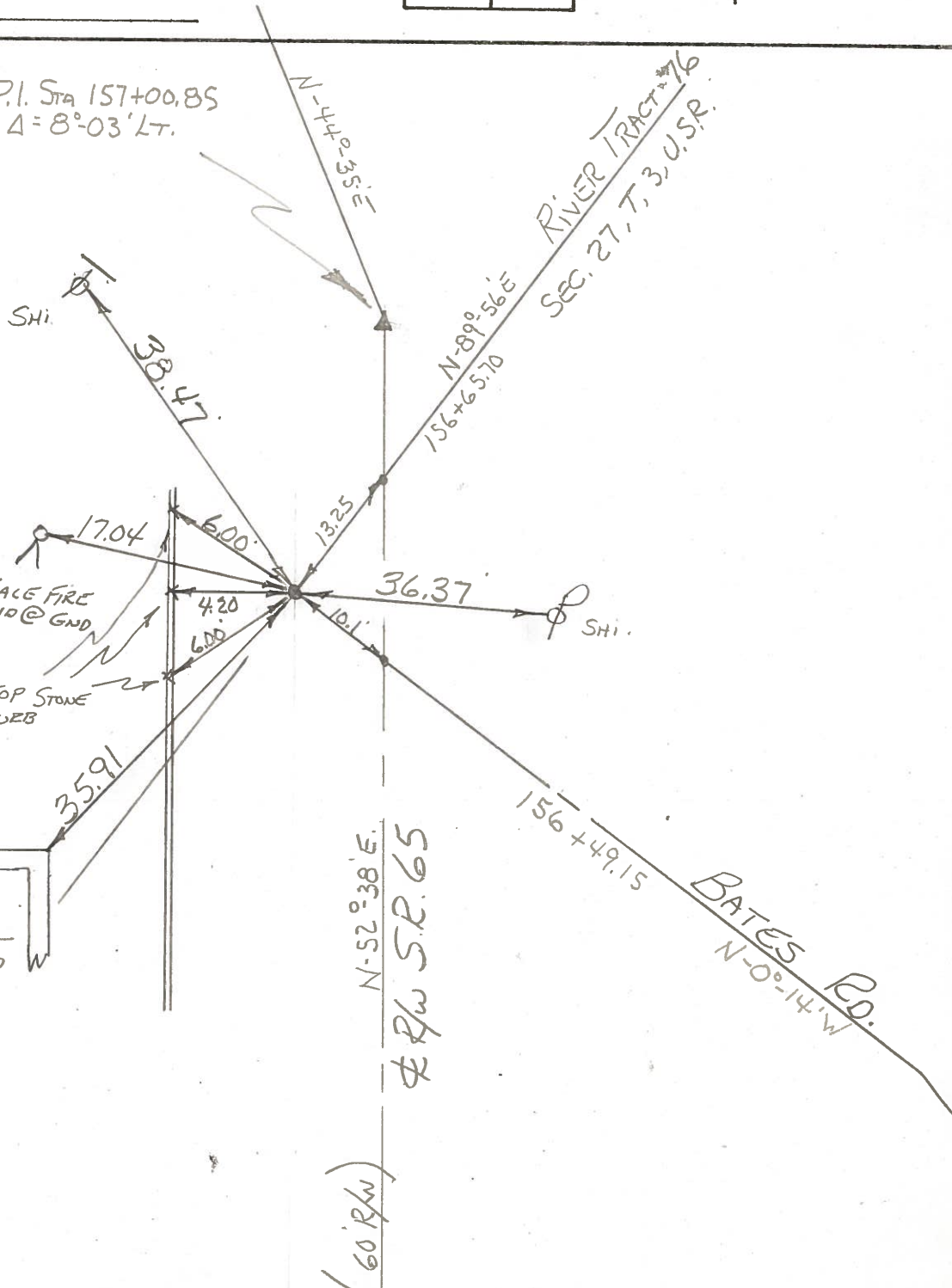


BOWERS

32-D

#34

P.I. Sta 157+00.85
 $\Delta = 8^{\circ}03'LT.$



FD. 1/2" Bolt
OVER I.P.I.U

FACE FIRE
HYD @ GND

4" TOP STONE
CORNER

COR. OF
CONC. WALL
FOR WOOD
FENCE

RIVER TRACT 76
RIVER TRACT 75

N-52°38'E
R/W S.R. 65

(60' R/W)

156+49.15
BATES RD.
N-0°14'W

RIVER TRACT 76
SEC. 27, T, 3, U.S.P.

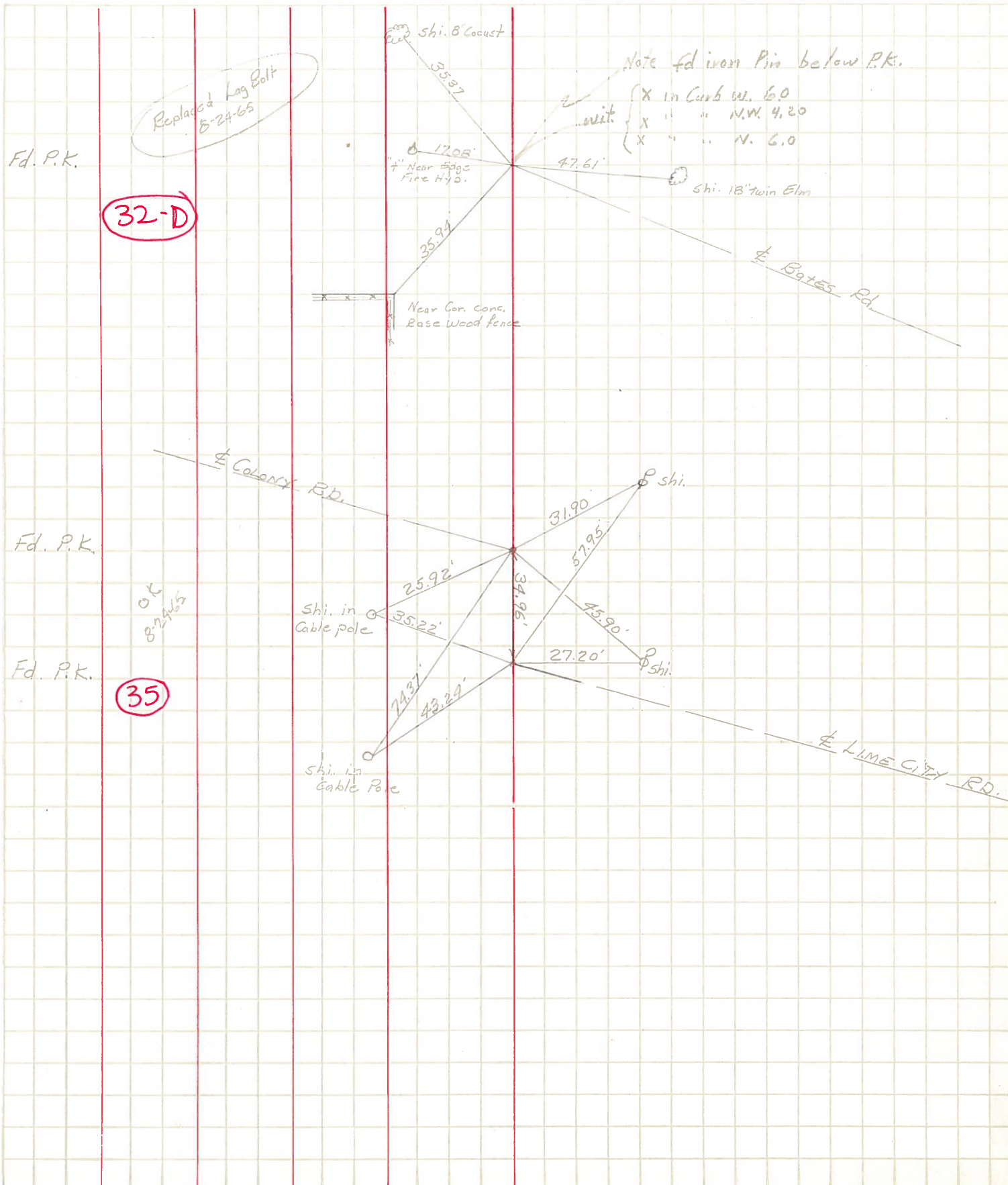
PERSONNEL TITLE PERSONNEL TITLE

COUNTY Wood DATE _____

S. R. 65 WEATHER _____

SEC. _____ TEMP. _____

DESCRIPTION LEFT CENTER LINE RIGHT JOB NO. _____



32-D

35

Fd. P.K.

Fd. P.K.

Fd. P.K.

OK
8-24-65

Replaced Lag Bolt
8-24-65

Note fd iron Pin below P.K.

- X in Curb W. 6.0
- X " " W.W. 4.20
- X " " N. 6.0

Shi. 8' Locust

12.05'
Near Edge
Fire Hydr.

Shi. 18' Twin Elm

Near Cor. Conc.
Base Wood fence

Colony Rd.

Bates Rd.

Shi.

Shi. in
Cable pole

Shi.

Shi. in
Cable Pole

Lime City Rd.

PERSONNEL	TITLE	PERSONNEL	TITLE

COUNTY Wood DATE _____

S. R. #65 WEATHER _____

SEC. C. TEMP. _____

DESCRIPTION # LEFT CENTER LINE RIGHT JOB NO.

DESCRIPTION #	LEFT	CENTER LINE	RIGHT	JOB NO.
#763 Sta. 85+02.65 Brass plate in pav't.			X in iron fence cor. post N.P.L. 41.6 Beat spike in 12" Elm S.S.E. 51.8 Iron cor. post S.S.W. 90.0	
#764 Sta. 114+07.85 Brass plate in pav't.			3rd iron fence post N. 34.0 X iron cor. post N.N.W. 30.1 Nail in 8" pine W. 51.8	
#765 Sta. 147+39.12 (New) brass plate			Shiner in 30" oak N.N.W. 29.5 Shiner in 24" oak W. 61.2 Shiner in 14" catalpa S. 90.1	
#766 Sta. approximately 156+55 Iron bolt River Track #75 & 76			X base fire Hyd. N.N.W. 17.0 Shiner in 16" locust W. 63.3 Shiner in 24" Elm S.S.E. 60.9	
#767 Sta. 157+00.85 P.I. Brass Plate in pav't.			Shiner in 12" cherry N.N.W. 30.0 X base fire Hyd. W. 48.5 Shiner in 40" Elm E.S.E. 76.5 Shiner in 24" Elm S.S.E. 49.6	