

O.D.O.T. DISTRICT 2 SURVEY OFFICE (USE ONLY)

PERSONNEL _____ REFERENCE NO. 32 D SHEET 16 OF 21
 NOTES AUBLE DATE 5-8-23 ROUTE SR 65
 H.C. NIESE WEATHER CLOUDY COUNTY WOOD
 R.C. AUBLE TEMP. 55° F TOWNSHIP PERRYSBURG
 SECTION RT 75
 DWG BY RHOADES PID PAVING TRAIN T 3 12 MILE RESERVE

TYPE MONUMENT MAG/WASHER

ON SURFACE - ~~BELOW~~ ON

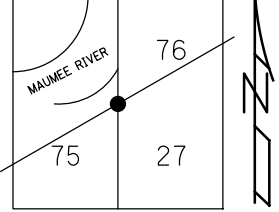
OFFSET CL PAVEMENT 10.9' LT : RT

1.0' TO LT EDGE PAVEMENT

STATION: 1160+37

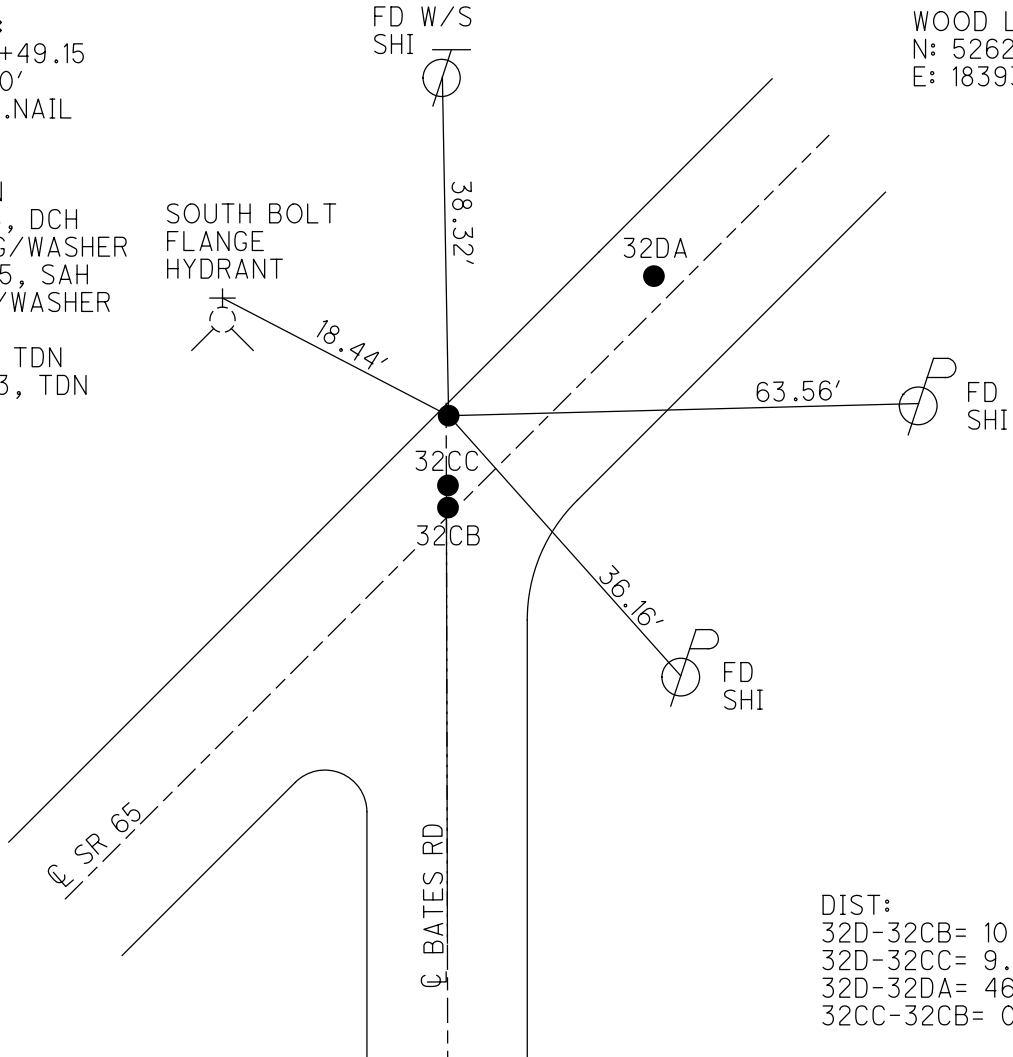
HORIZ.DATUM: NAD83 2011 GEOID: NAVD88 2018

GRID: NORTHING: 704094.544 EASTING: 1673837.437



RECORD:
 STA 156+49.15
 $\Delta = 0^\circ 0'$
 SET P.K.NAIL
 1937
 FD IPIN
 6" DOWN
 9/14/05, DCH
 SET MAG/WASHER
 10-27-05, SAH
 FD MAG/WASHER
 REF32D
 5-8-23, TDN
 10/12/23, TDN

WOOD LPD:
 N: 526217.043
 E: 183937.051



DIST:
 32D-32CB= 10.71'
 32D-32CC= 9.48'
 32D-32DA= 46.33'
 32CC-32CB= 0.91'

O.D.O.T. DISTRICT 2 SURVEY OFFICE

PERSONNEL

REFERENCE NO. 32-D

SHEET 14 OF 14

NOTES

HUSS

DATE

9-14-05

ROUTE

S.R. 65

H.C.

NUHFER

WEATHER

SUNNY

COUNTY

WOOD

R.C.

HOMAN

TEMP.

78°

TOWNSHIP PERRYSBURG

SECTION RIVER TRACT

~~T7-N R11-E~~

Toward 3, 12 miles Res.

TYPE MONUMENT

A- IRON PIN B-SM RR SPIKE
C & D PK NAILS

ON SURFACE - ~~BELOW~~

A-6" DOWN

B, C, & D ON SURFACE

LEFT - ~~C PAVT~~ - RIGHT

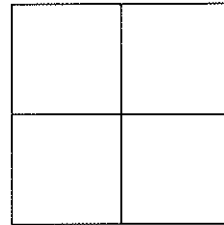
A-10.9' LT B-1.2' LT
C-1.2' LT D-0.3' LT

TO LT EDGE PAVEMENT

A-1.0' B-10.9'
C-9.9' D-10.8'

S.L.M.

A 1160+35



RECORD

PT A SET PK NAIL @ BATES RD
STA 156+49.15 (1937)
DELTA= 0°0'

SET MAG NAILS
& WASHERS
10-27-05
SAH

RECORD PT B
STA 157+0085

PT C & D
ORIGIN UNKNOWN

A=38.35'
B=23.26'
C=46.94'
D=47.76'

SET "X" CUT
ON SE BOLT
OF LOWER FLANGE

A=18.11'
B=48.91'
C=27.40'
D=28.28'

FD N&S
S/S

S.R. 65

FD N&S
NW/S

A=63.61'
B=24.23'
C=65.82'
D=66.10'

FD N&S
NW/S

A=36.17'
B=47.54'
C=30.44'
D=30.01'

PAVEMENT

BATES RD

DISTANCE A-B=46.41'
DISTANCE C-D=0.91'

OD.O.T. DISTRICT 2 SURVEY OFFICE

Sht. 20 of 20
S.R. 65

County WOOD

Date 8-1-78

Township FERRYSBURG

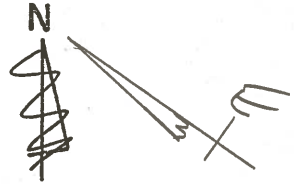
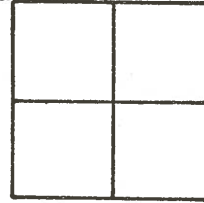
Weather CLEAR

Section _____

Temp. +78°

T N, R E

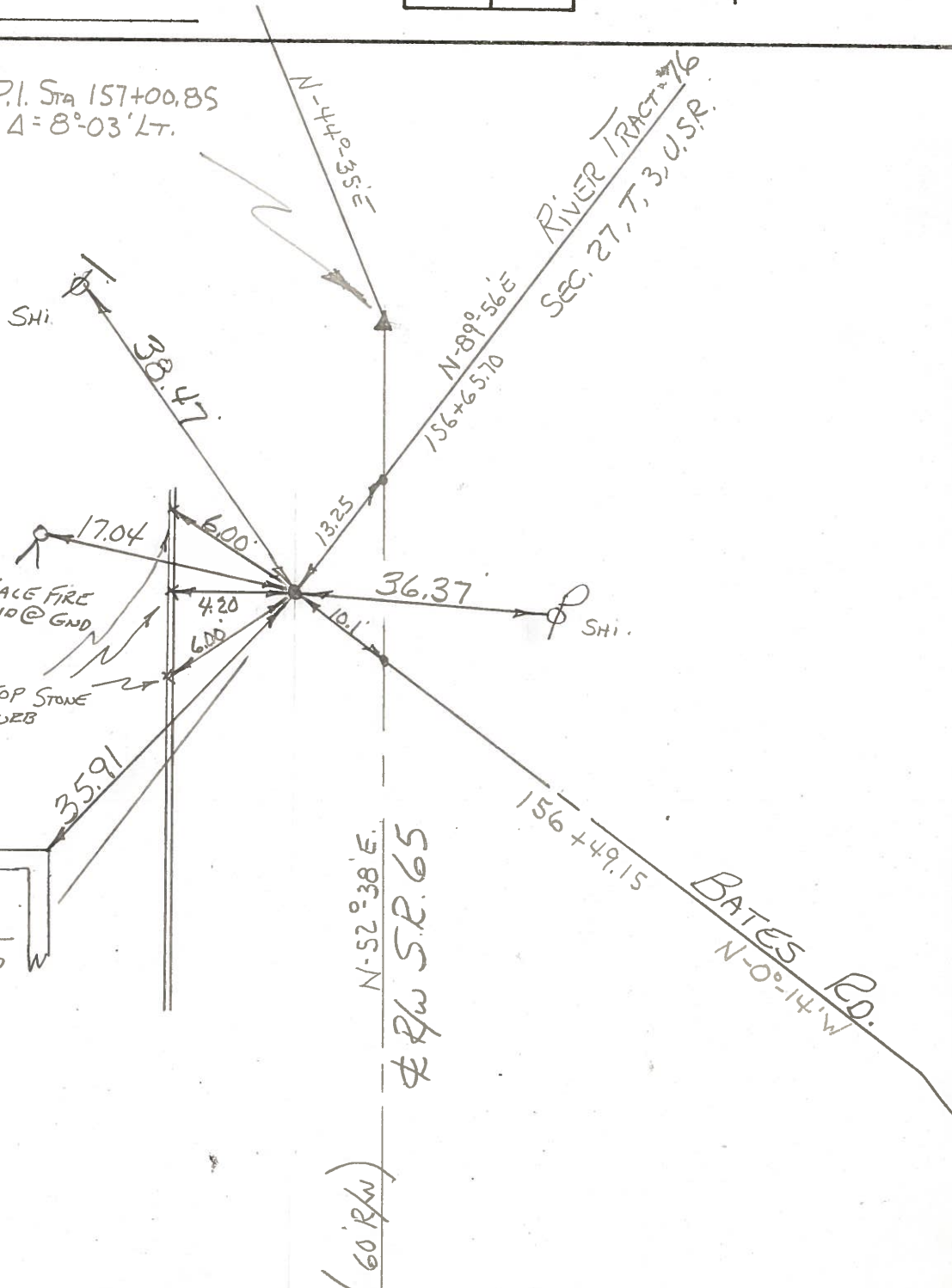
Personnel BURNSIDE



32-D

#34

P.I. Sta 157+00.85
 $\Delta = 8^{\circ}03'LT.$



FD. 1/2" Bolt
OVER I.P.I.U

RIVER TRACT 76
RIVER TRACT 75

RIVER TRACT 76
SEC. 27, T, 3, U.S.P.

BATES RD.
N-0°-14'W

60' R/W
S.R. 65

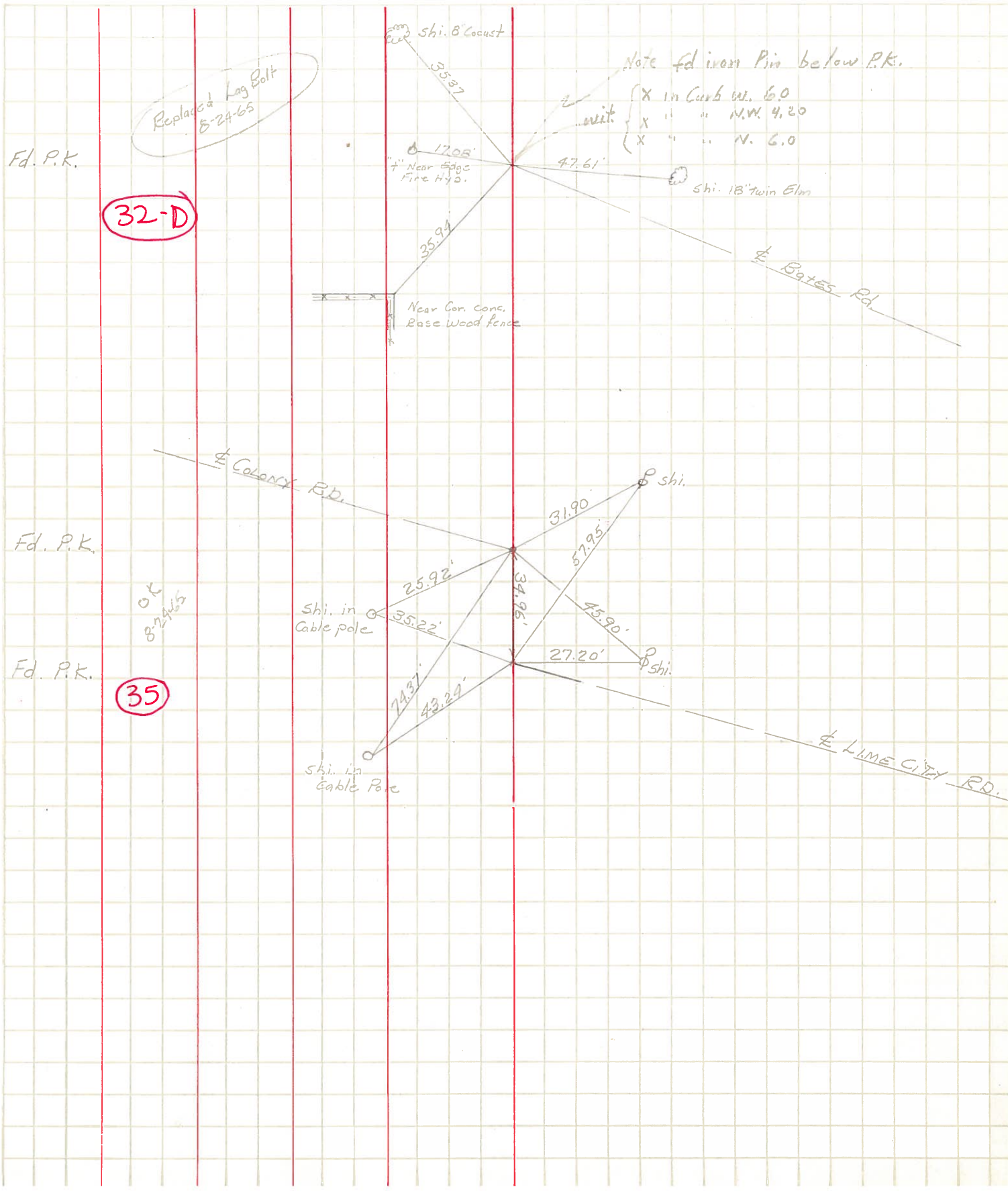
PERSONNEL TITLE PERSONNEL TITLE

COUNTY Wood DATE

S. R. 65 WEATHER

SEC. TEMP.

DESCRIPTION LEFT CENTER LINE RIGHT JOB NO.



Replaced Lag Bolt
8-24-65

Note fd iron Pin below P.K.

- X in Curb W. 6.0
- X " " W.W. 4.20
- X " " N. 6.0

32-D

OK
8-24-65

35

PERSONNEL	TITLE	PERSONNEL	TITLE	COUNTY <u>Wood</u>	DATE
				S. R. <u>#65</u>	WEATHER
				SEC. <u>C.</u>	TEMP.

DESCRIPTION #	LEFT	CENTER LINE	RIGHT	JOB NO.
#763 Sta. 85+02.65 Brass plate in pav't.			X in iron fence cor. post N.P.L. 41.6 Beat spike in 12" Elm S.S.E. 51.8 Iron cor. post S.S.W. 90.0	
#764 Sta. 114+07.85 Brass plate in pav't.			3rd iron fence post N. 34.0 X iron cor. post N.N.W. 30.1 Nail in 8" pine W. 51.8	
#765 Sta. 147+39.12 (New) brass plate			Shiner in 30" oak N.N.W. 29.5 Shiner in 24" oak W. 61.2 Shiner in 14" catalpa S. 90.1	
#766 Sta. approximately 156+55 Iron bolt <u>River Track #75 & 76</u>			X base fire Hyd. N.N.W. 17.0 Shiner in 16" locust W. 63.3 Shiner in 24" Elm S.S.E. 60.9	
#767 Sta. 157+00.85 P.I. Brass Plate in pav't.			Shiner in 12" cherry N.N.W. 30.0 X base fire Hyd. W. 48.5 Shiner in 40" Elm E.S.E. 76.5 Shiner in 24" Elm S.S.E. 49.6	