

O.D.O.T. DISTRICT 2 SURVEY OFFICE (USE ONLY)

PERSONNEL

REFERENCE NO. 35 A

SHEET 11 OF 12

NOTES BARNHISEL  
 H.C. LOEHEKE  
 R.C. HOFFMAN

DATE 4-24-91  
 WEATHER CLOUDY  
 TEMP. 58° F

ROUTE SR 65  
 COUNTY WOOD  
 TOWNSHIP ROSSFORD  
 SECTION RT 81  
 T 8 N      N 11 E

DWG BY AUBLE      PID \_\_\_\_\_

TYPE MONUMENT 3/4" IRON ROD

~~ON SURFACE~~ - BELOW 6"

OFFSET ☉ PAVEMENT 48.5' RT : RT  
34' TO RT EDGE PAVEMENT

STATION: 1218+53

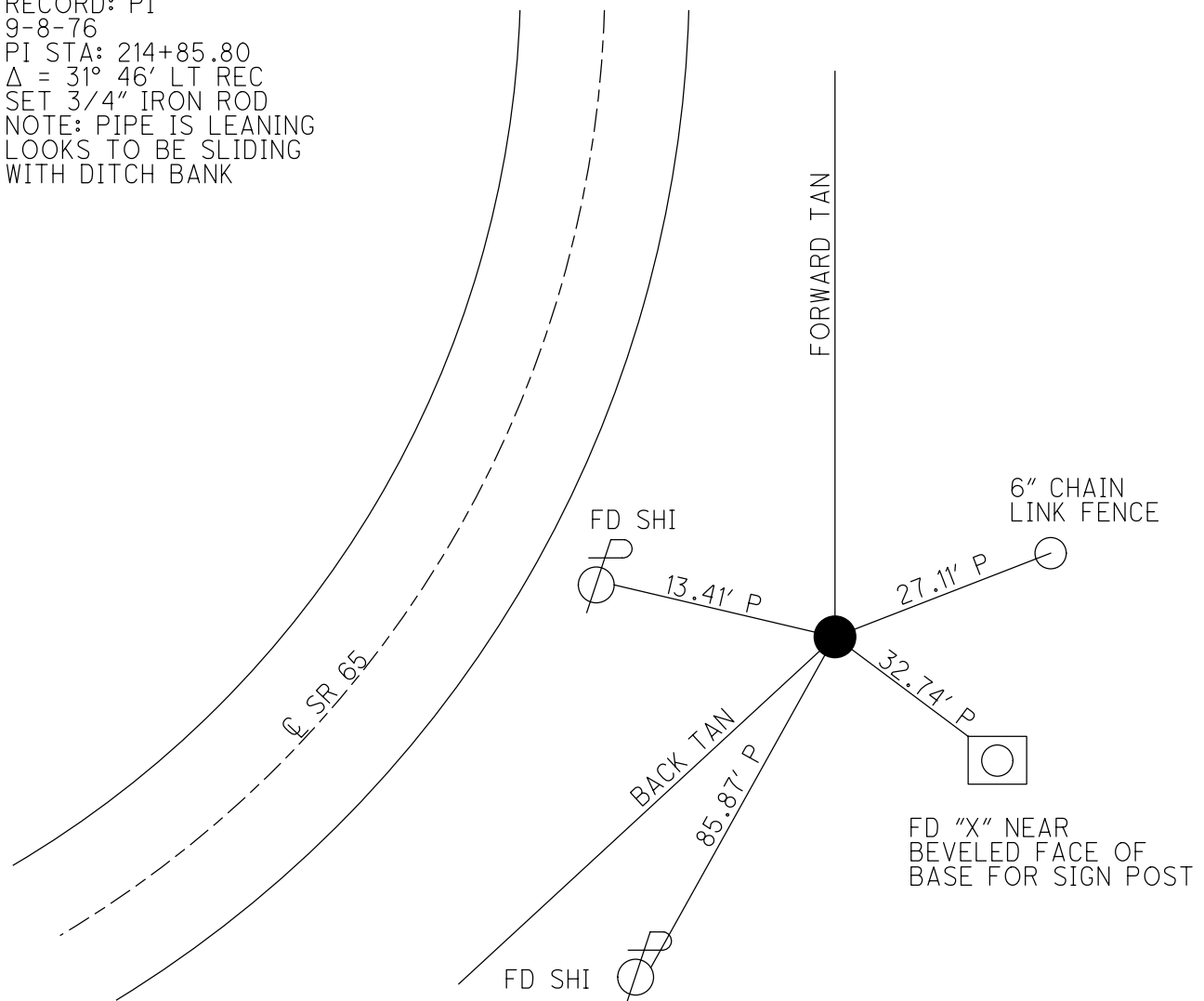
HORZ. DATUM: -      GEOID: -

GRID: NORTHING: -      EASTING: -

79	80	81	82	83
	●			
78				
77			SEC	
76			23	



RECORD: PI  
 9-8-76  
 PI STA: 214+85.80  
 $\Delta = 31^\circ 46'$  LT REC  
 SET 3/4" IRON ROD  
 NOTE: PIPE IS LEANING  
 LOOKS TO BE SLIDING  
 WITH DITCH BANK



# O.D.O.T. DISTRICT 2 SURVEY OFFICE

PERSONNEL \_\_\_\_\_

REFERENCE NO. 35-A

SHEET \_\_\_\_\_ OF \_\_\_\_\_

NOTES BARNHISEL

H.C. Loehke

DATE 4-24-91

ROUTE 65

R.C. HOFFMAN

WEATHER Cloudy

COUNTY Wood

TEMP. +58°

TOWNSHIP Rosebud

SECTION R.T. 81

T 8 N R 11 E

TYPE MONUMENT 3/4" I. Rod

ON SURFACE - BELOW 6"

LEFT - C PAV'T. - RIGHT 48.5

34.0 <sup>ST</sup> TO DE RT EDGE PAVEMENT

S.L.M. 1218+53

79	80	81	82
78			
	77		76
		75	74



Record; as of  
9-8-76

P.I. STA: 214+85.80

Δ = 31°-46' Lt Pec

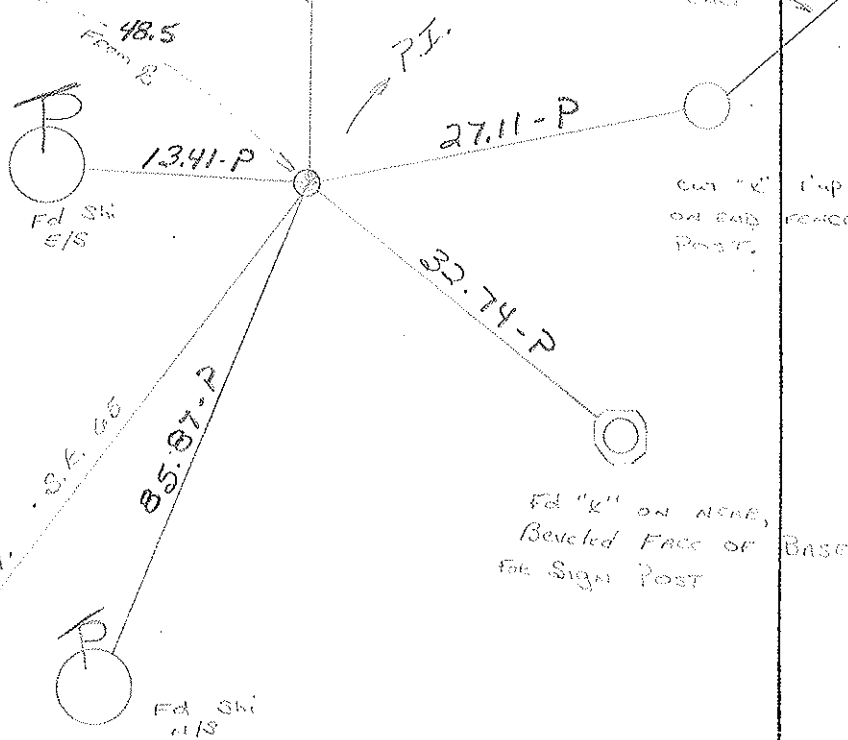
Δ = 31°-45' Lt Meq,

Set 3/4" Iron Rod by  
using Control Points  
@ Line City Rd & R  
Pipe Ed along SR 65.

C. PAV'T

SR 65

Powered Trail SR 65



NOTE: Pipe is leaning;  
It looks to be sliding  
with the ditch bank.  
"QUESTIONABLE FOR USE"

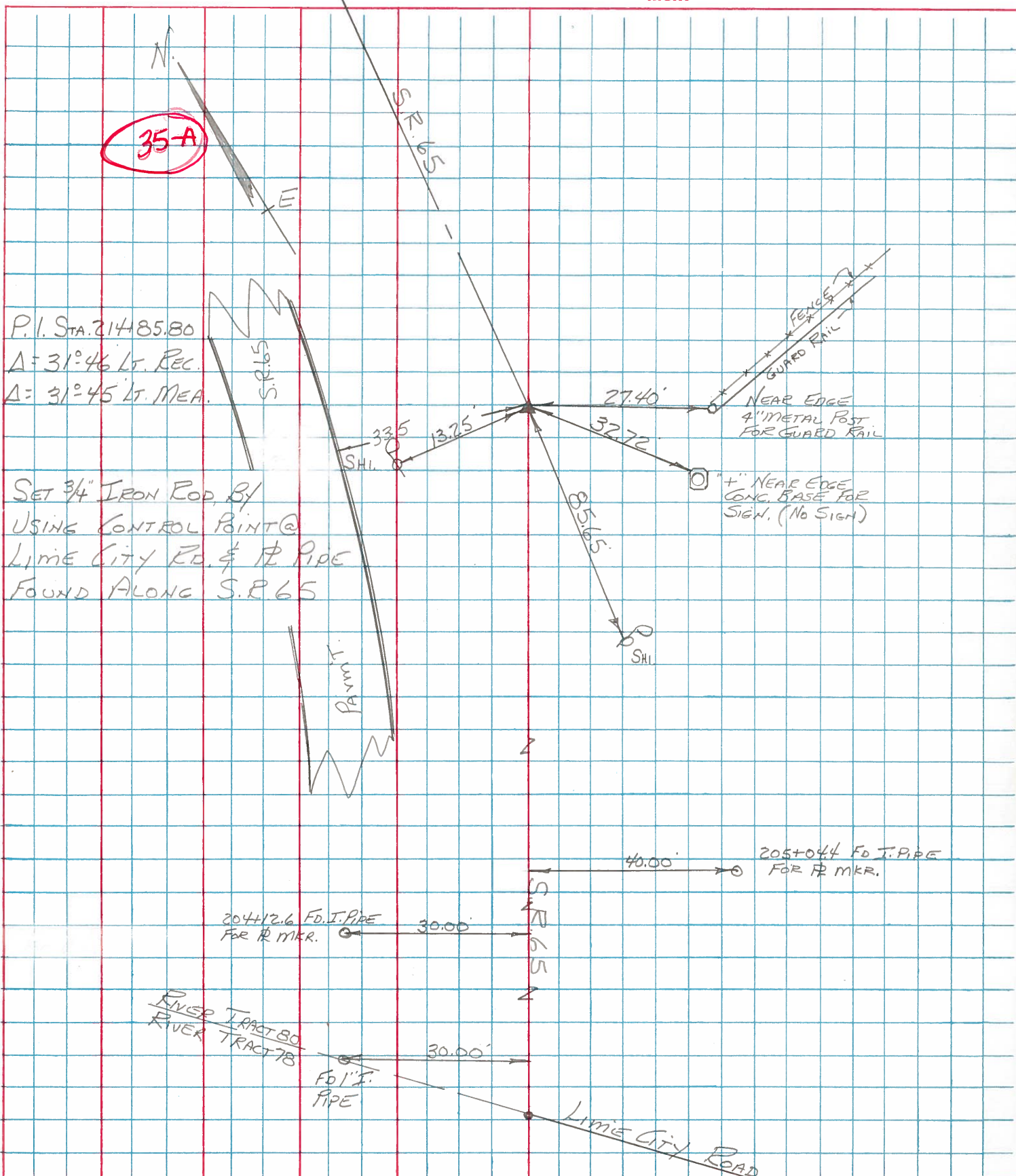
BACK TRAIL

SR 65

PERSONNEL TITLE PERSONNEL TITLE  
 BURNSIDE \_\_\_\_\_  
 BOWERS \_\_\_\_\_  
 MEAD \_\_\_\_\_

COUNTY WOOD DATE 9-8-76  
 S. R. 65 WEATHER CLEAR  
 SEC. ROSSFORD TEMP. +93°

DESCRIPTION ESTABLISH CONTROL POINTS JOB NO. \_\_\_\_\_



PERSONNEL TITLE PERSONNEL TITLE

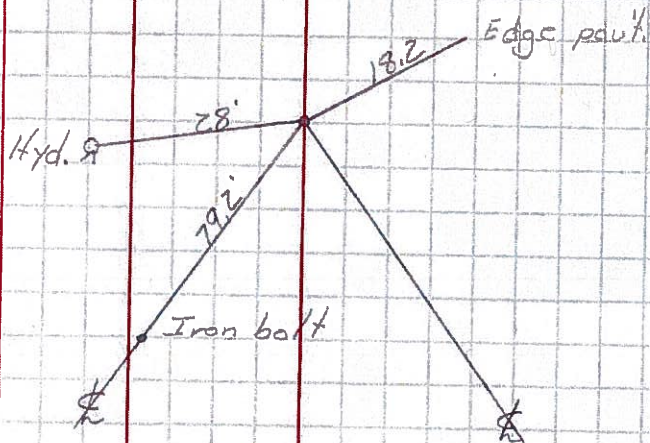
COUNTY Wood DATE

S. R. #65 WEATHER

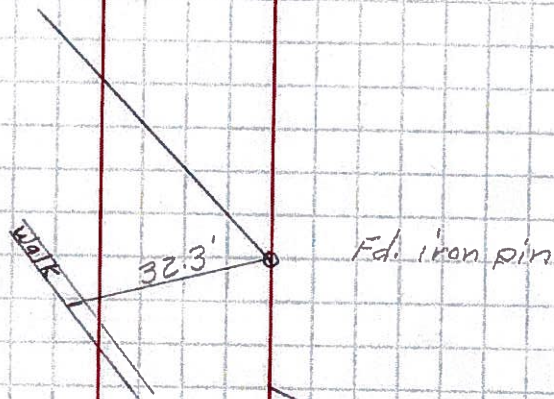
SEC. TEMP.

DESCRIPTION LEFT CENTER LINE RIGHT JOB NO.

Sta. 224+22  
P.I. Δ = 32°-01' Bl.  
#782



Sta. 214+85.8  
P.I. Δ = 31°-46' Lt.  
#781



Sta. 214+77  
19.5' to edge of cur  
25.0' to wind  
wing wall

