

O.D.O.T. DISTRICT 2 SURVEY OFFICE (USE ONLY)

PERSONNEL \_\_\_\_\_

REFERENCE NO. C

SHEET 4 OF \_\_\_\_\_

NOTES LOEHRKE

DATE 7/7/94

ROUTE SR 65

H.C. CANTERBURY

WEATHER NICE

COUNTY WOOD

R.C. HERMILLER

TEMP. 74°

TOWNSHIP 12 MILE RESERVE

VOGEL/PRUNTY

SECTION RT 83

DWG BY NIESE PID \_\_\_\_\_

T 3 US R E

TYPE MONUMENT 3" BRASS PLATE

~~ON SURFACE~~ - BELOW 4"

OFFSET CL PAVEMENT 5.8' LT : ~~RT~~

19.0' TO LT EDGE PAVEMENT

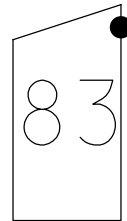
STATION: 1295+18.4

HORZ. DATUM: \_\_\_\_\_

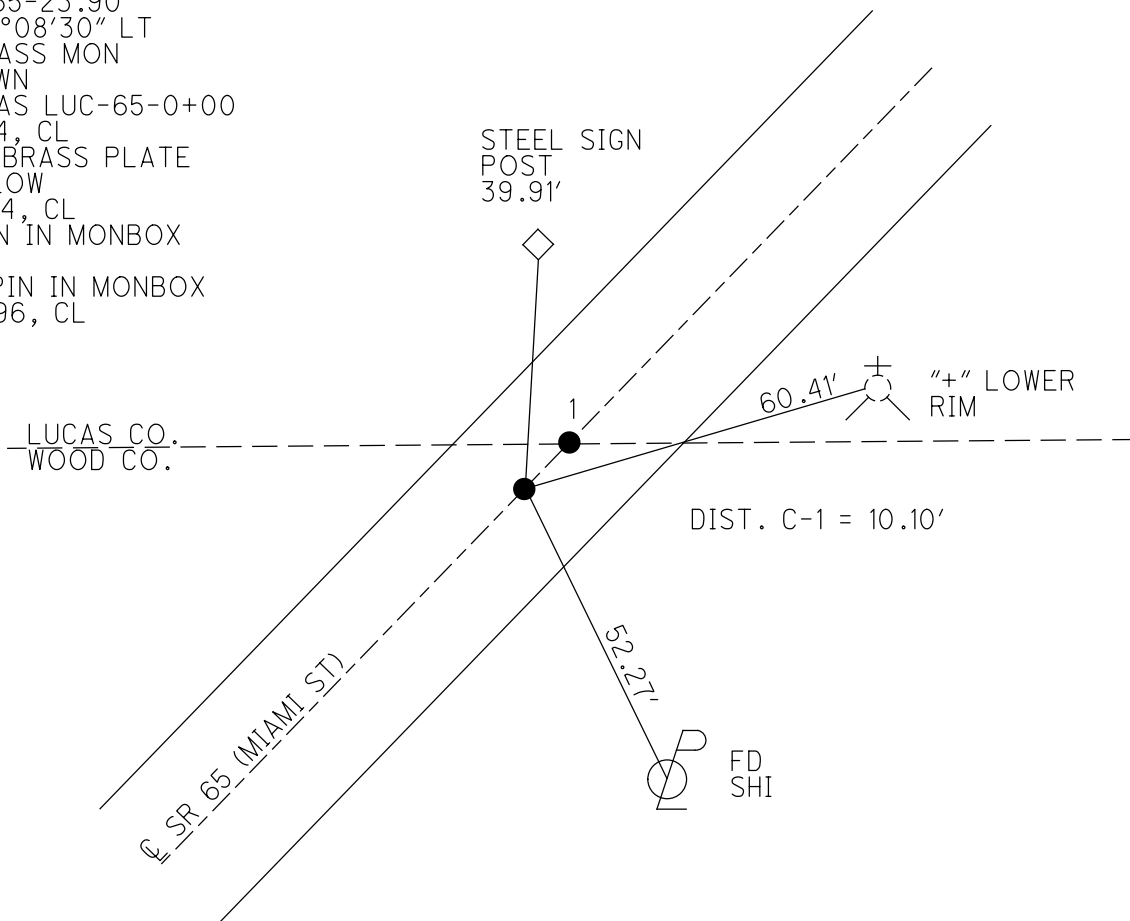
GEOID: \_\_\_\_\_

GRID: NORTHING: \_\_\_\_\_

EASTING: \_\_\_\_\_



RECORD: P.I.  
FROM 1969 PLAN  
WOO-65-23.90  
 $\Delta = 00^{\circ}08'30''$  LT  
FD BRASS MON  
3" DOWN  
USED AS LUC-65-0+00  
4/1/94, CL  
FD 3" BRASS PLATE  
4" BELOW  
7/7/94, CL  
NO PIN IN MONBOX  
1996  
SET IPIN IN MONBOX  
8/15/96, CL



# O.D.O.T. DISTRICT 2 SURVEY OFFICE

PERSONNEL

REFERENCE NO. 1

SHEET      OF     

NOTES LOEHRKE  
 H.C. CANTERBURY  
 R.C. HERMILLER  
VOGEL  
PRUNTY

DATE 7-7-54  
 WEATHER Nice  
 TEMP. +74

ROUTE SR 65  
 COUNTY WOOD / LUCAS  
 TOWNSHIP ROSSFORD  
 SECTION RT 83  
T 8 N R 11 E

A = BRASS PLATE - 3" DIA.

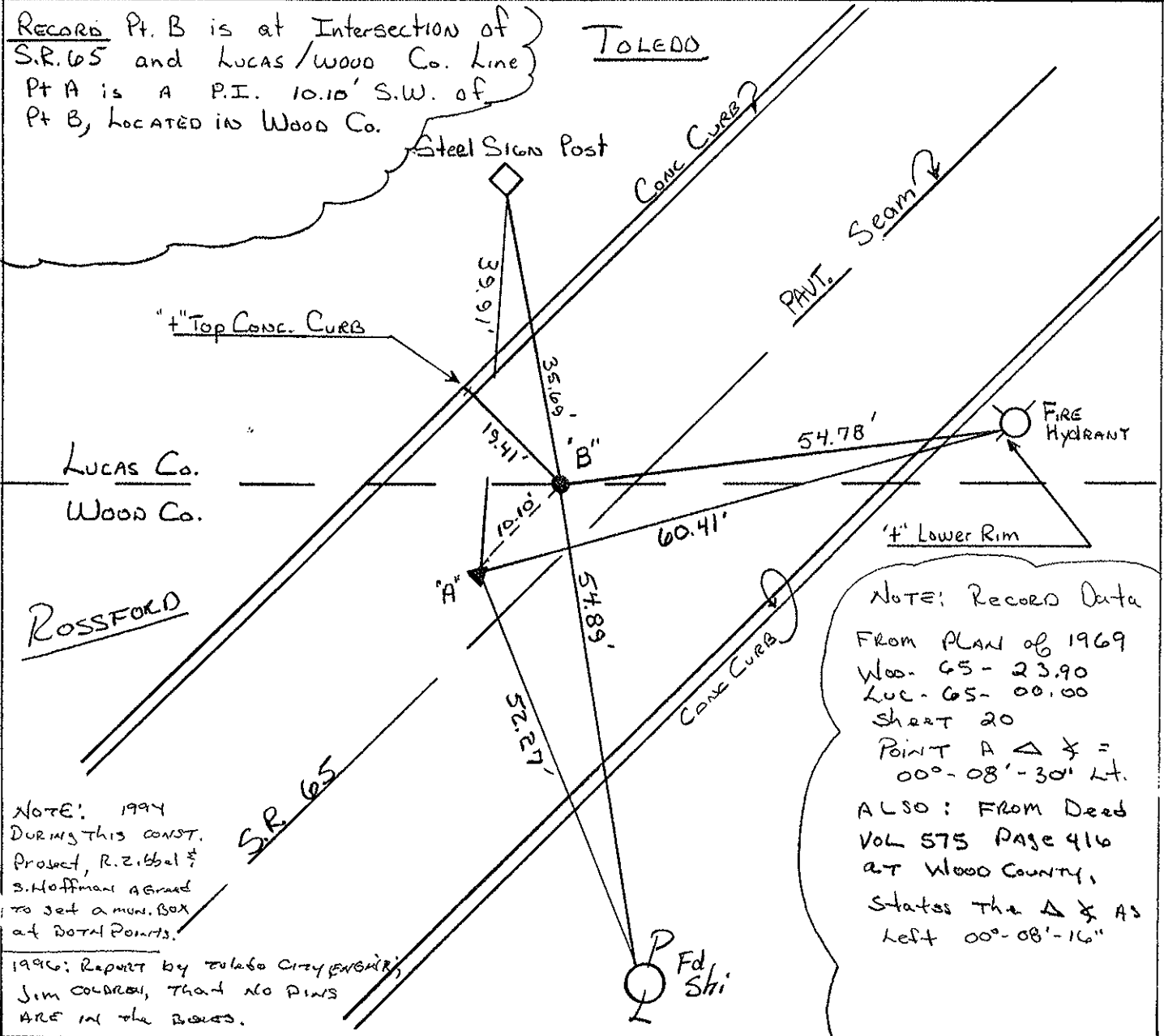
TYPE MONUMENT B = McDONALD PROUDFOOT Disk  
ON SURFACE - BELOW A = 4" B = 2 1/2"  
LEFT - & PAV'T. - RIGHT 5.0' Lt of "Seam"  
19.0' Lt EDGE PAVEMENT  
 S.L.M. B = 0+00 Lucas Co.

79	80	81	82	83
78				
77			SEC	
76			83	



RECORD Pt. B is at Intersection of  
 S.R. 65 and Lucas/Wood Co. line  
 Pt A is a P.I. 10.10' S.W. of  
 Pt B, located in Wood Co.

TOLEDO



NOTE: Record Data  
 From PLAN of 1969  
 WOOD - 65 - 23.90  
 LUCAS - 65 - 00.00  
 SHEET 20  
 POINT A Δ & =  
 00°-08'-30' Lt.  
 ALSO: FROM Deed  
 VOL 575 PAGE 416  
 AT WOOD COUNTY,  
 States the Δ & AS  
 Left 00°-08'-16"

NOTE: 1994  
 DURING THIS CONST.  
 PROJECT, R. ZIBBEL &  
 S. HOFFMAN AGREED  
 TO SET A MON. BOX  
 AT BOTH POINTS.

1996: Report by Toledo City Engineer,  
 Jim COLEMAN, THAT NO PINS  
 ARE IN THE BOXES.

8-15-96 C. LOEHRKE & CREW SET  
 AN IRON PIN IN BOTH MONUMENTS.

# O.D.O.T. DISTRICT 2 SURVEY OFFICE

PERSONNEL \_\_\_\_\_

REFERENCE NO. \_\_\_\_\_

SHEET \_\_\_\_\_ OF \_\_\_\_\_

NOTES LOEHRKE

H.C. CANTERBURY

R.C. HERMILLEG

VOGEL

PRUNTY

DATE 7-7-94

WEATHER Nice

TEMP. +74

ROUTE S.R. 65

COUNTY Wood / Lucas

TOWNSHIP ROSSFORD

SECTION RT 83

T & N R 11 E

A = BRASS PLATE - 3" DIA.

TYPE MONUMENT B = McDONALD PRODFOOT Disk

~~ON~~ SURFACE - BELOW A = 4" B = 2 1/2"

LEFT - ~~C~~ PAV'T. - ~~RIGHT~~ 5.0' Lt of "Seam"

19.0' Lt EDGE PAVEMENT

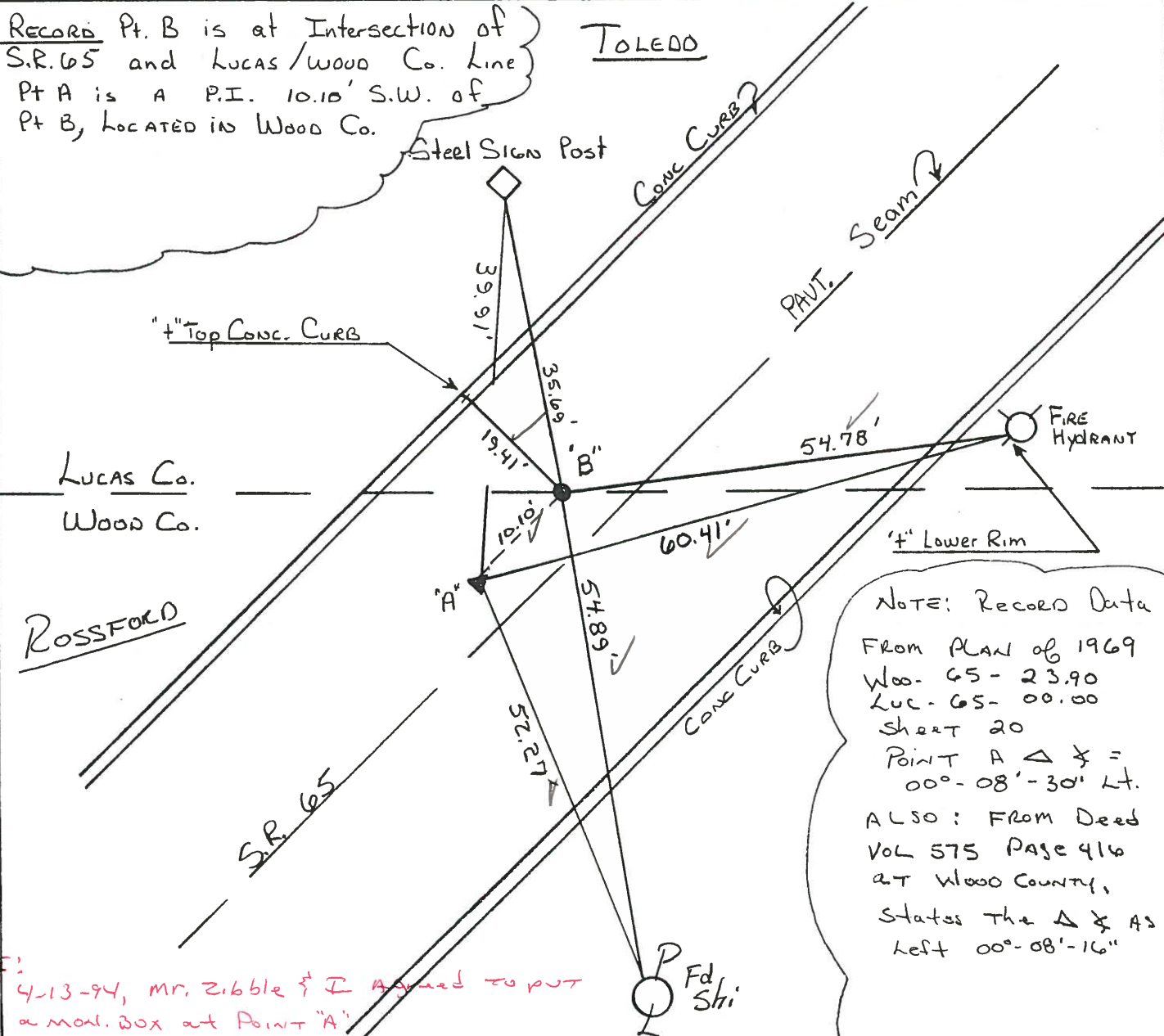
S.L.M. B = 0+00 Lucas Co.

79	80	81	82	83
78				
77			SEC	
76			23	



RECORD Pt. B is at Intersection of S.R. 65 and Lucas/Wood Co. Line  
 Pt A is A P.I. 10.10' S.W. of Pt B, LOCATED IN Wood Co.

TOLEDO



NOTE: RECORD DATA FROM PLAN of 1969  
 Woo- 65 - 23.90  
 Luc- 65 - 00.00  
 SHEET 20  
 POINT A Δ & = 00°-08'-30' Lt.  
 ALSO: FROM DEED VOL 575 PAGE 416 AT WOOD COUNTY, STATES THE Δ & AS LEFT 00°-08'-16"

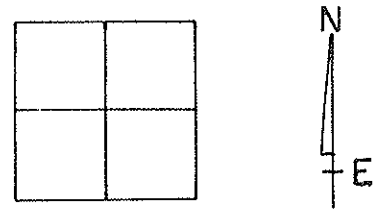
NOTE: 4-13-94, Mr. Zibble & I Agreed to put a mon. box at Point "A"

NOTE: O.D.O.T. CREW SET BOTH I.P.M.S. 8-15-96 SWD

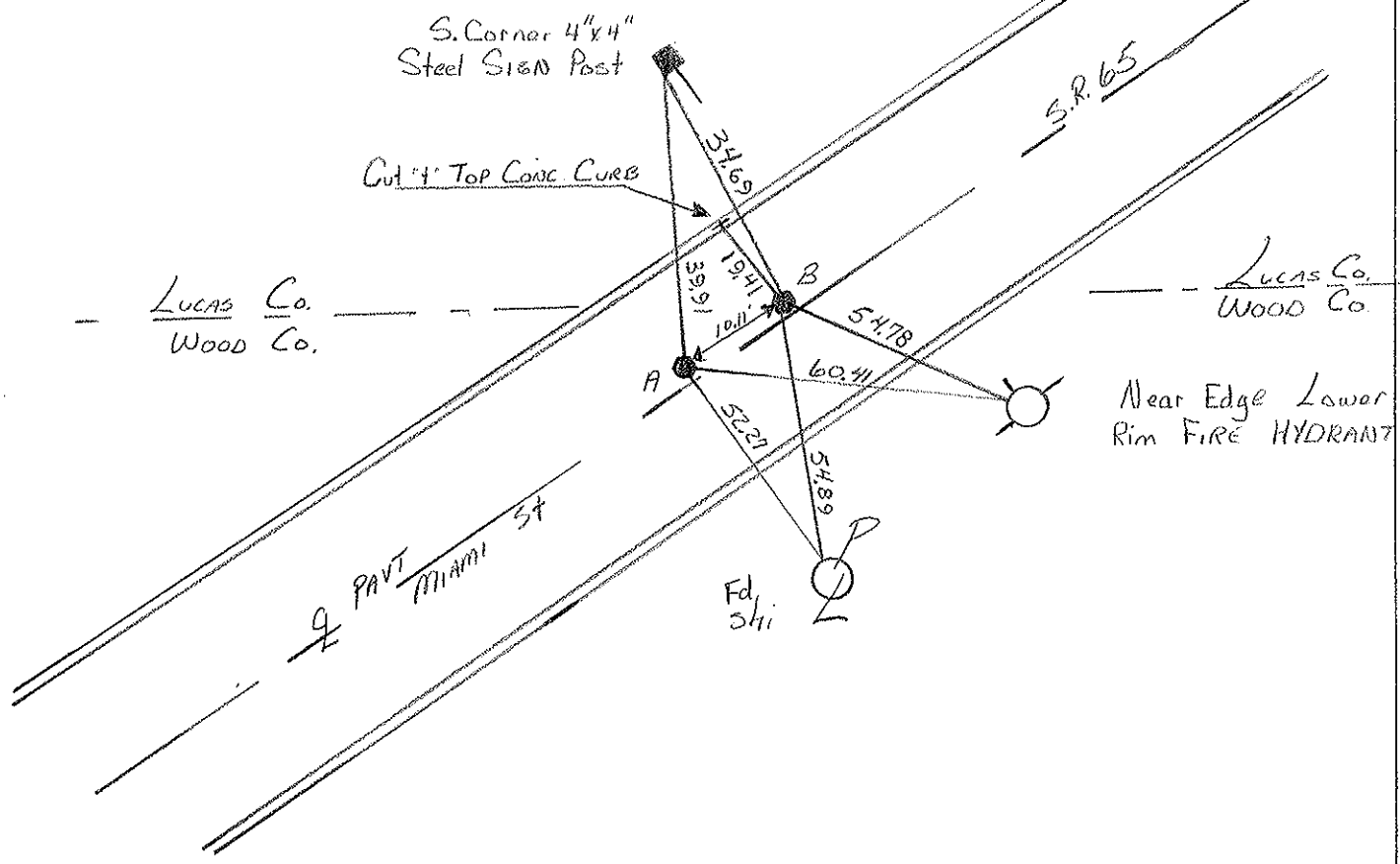
# O.D.O.T. DISTRICT 2 SURVEY OFFICE

PERSONNEL \_\_\_\_\_ REFERENCE NO. 1 SHEET 1 OF 5  
 NOTES Loehrke  
 H.C. CANTERBURY DATE 4-1-94 ROUTE S.R. 65  
 R.C. Vogel WEATHER Nice COUNTY WOOD / Lucas  
HERMILLER TEMP. +55 TOWNSHIP \_\_\_\_\_  
 SECTION \_\_\_\_\_  
 T \_\_\_\_\_ R \_\_\_\_\_

TYPE MONUMENT BRASS Monuments  
~~ON~~ SURFACE - BELOW 3" Both  
 LEFT - PAV'T. - RIGHT 5.8'  
19.2 TO Lt EDGE PAVEMENT  
 S.L.M. Pt "A" = 1994 Project Sta 0+00



Pt "A" Lg. BRASS Disk w/ Ctr. Pinch Hole.  
 Used as Sta 0+00 Lucas 65-0.00. RESURF PLANS - 1994  
Pt "B" Sm Steel Disk, Stamped "McDonald-Fraudfoot"  
 Believed to Be County Line



O.D.O.T. DISTRICT 2 SURVEY OFFICE

PERSONNEL

REFERENCE NO. 1

SHEET 1 OF 5

NOTES CITY

H.C. OF

R.C. TOLEDO

DATE 1-13-92

WEATHER \_\_\_\_\_

TEMP. \_\_\_\_\_

ROUTE 65

COUNTY LUCAS

TOWNSHIP \_\_\_\_\_

SECTION \_\_\_\_\_

T \_\_\_\_\_ R \_\_\_\_\_

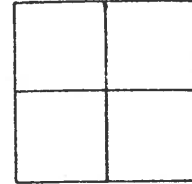
TYPE MONUMENT BRASS PLATE

ON SURFACE - BELOW SURFACE

LEFT- & PAV'T. - RIGHT &

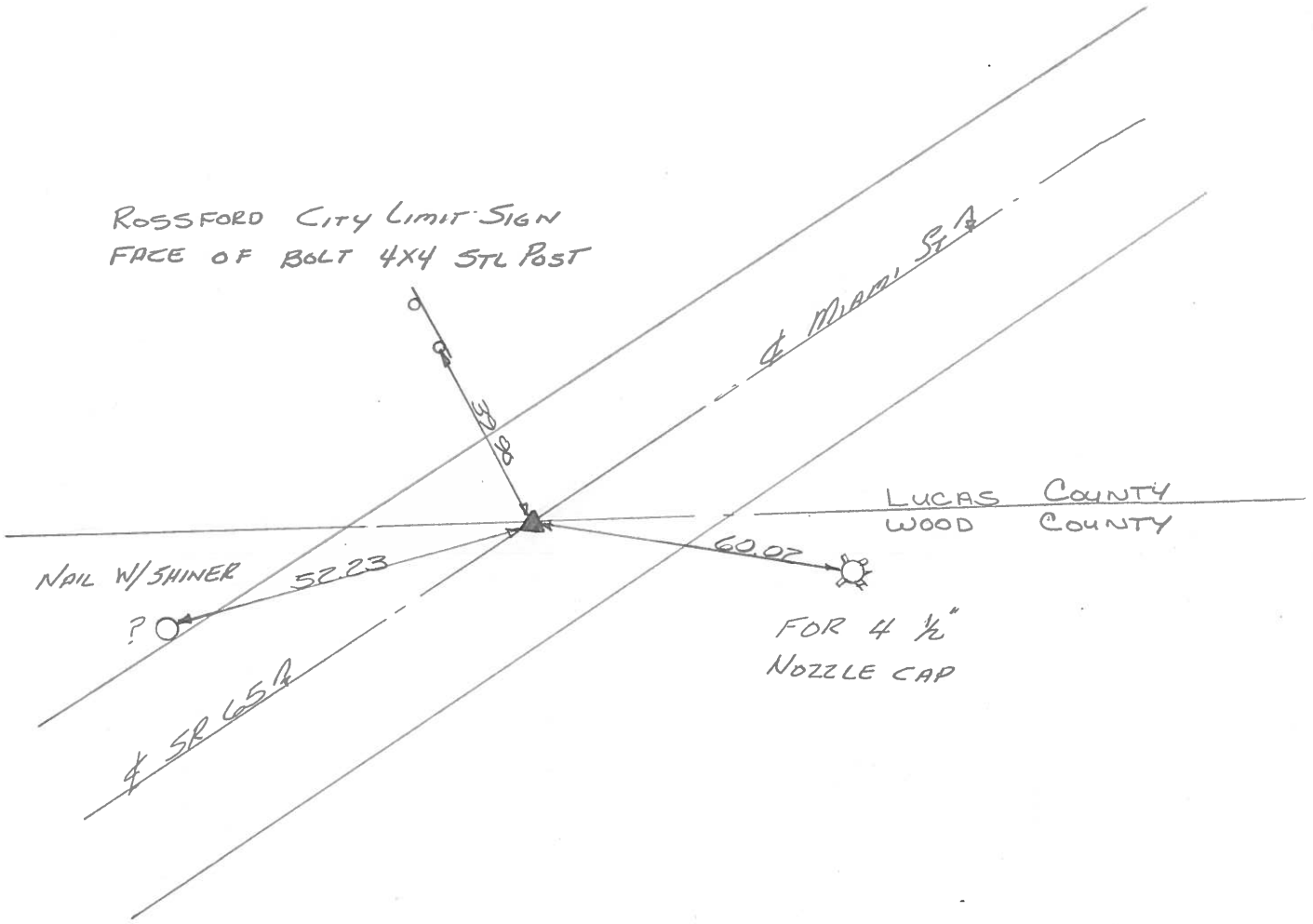
TO \_\_\_\_\_ EDGE PAVEMENT

S.L.M. 0+00.00



TOLEDO PLAN LUC-SR-65-00

ROSSFORD City Limit Sign  
FACE OF BOLT 4X4 STL Post



# O.D.O.T. DISTRICT 2 SURVEY OFFICE

PERSONNEL

REFERENCE NO. 37

SHEET      OF     

NOTES BARNHISEL

H.C. Loehake

R.C. Hoffman

DATE 4-24-91

WEATHER cloudy

TEMP. +58°

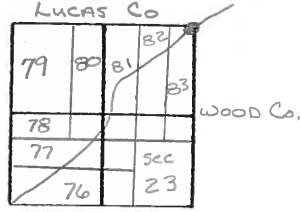
ROUTE S.R. 65

COUNTY WOOD/LUCAS

TOWNSHIP ROSSFORD

SECTION R.T. 83

T 8 N R 11 E



TYPE MONUMENT TABLET - MARKED McDONNELL & PROUDFOOT WITH A

ON SURFACE - BELOW yes

LEFT- & PAV'T. - RIGHT 8.0

19.0 TO LT EDGE PAVEMENT (or curb)

S.L.M. 1278+03

McDONNELL & PROUDFOOT WITH A "+" ON IT.

Set P.K. & Washer  
5-31-91  
mB

NOTE: THIS POINT "APPEARS" TO BE ON THE COUNTY LINE. CK WITH McDONNELL-PROUDFOOT FOR INFORMATION

cut "x" on top of curb

cut "x" on flange 1' up from sidewalk

