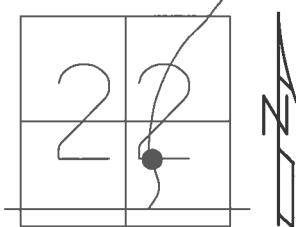


O.D.O.T. DISTRICT 2 SURVEY OFFICE (USE ONLY)

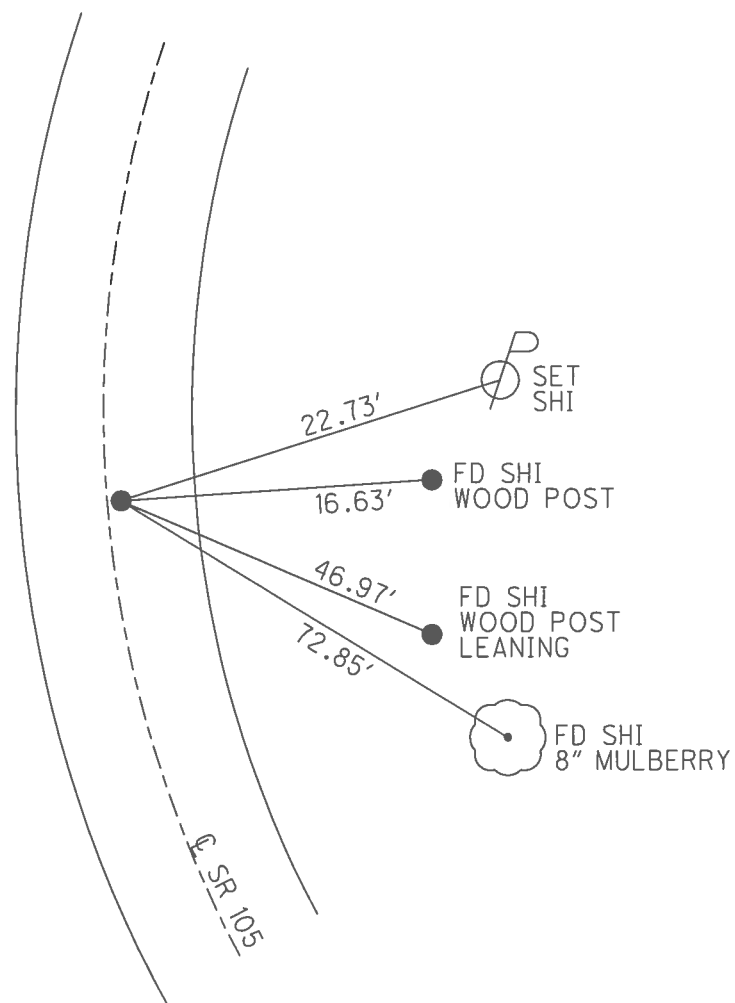
PERSONNEL \_\_\_\_\_ REFERENCE NO. 4 SHEET 11 OF 28  
 NOTES RHOADES DATE 9/9/16 ROUTE SR 105  
 H.C. O'DONNELL WEATHER CLOUDY COUNTY WOOD  
 R.C. RHOADES TEMP. 82° TOWNSHIP CENTER  
 SECTION 22  
T 5 N R 11 E

TYPE MONUMENT P.K./WASHER  
 ON SURFACE - ~~BELOW~~ ON  
~~LEFT~~ - CL PAV'T - RIGHT 0.4'  
9.5' TO RT EDGE PAVEMENT  
 S.L.M. 116+27



GRID: NORTHING: 624778.638 EASTING: 1672388.494

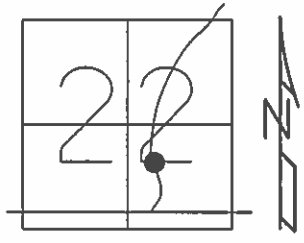
RECORD: P.I.  
 STA. 116+71.85  
 $\Delta = 2^\circ 31' 40''$  RT  
 FD P.K./WASHER  
 4/13/02, MB  
 SET P.K./WASHER  
 5/31/02, DCH  
 FD P.K./WASHER  
 REF 4/16/2/16, JFO  
 UNCOVERED 1 1/2" DOWN  
 5/23/17, JFO



O.D.O.T. DISTRICT 2 SURVEY OFFICE (USE ONLY)

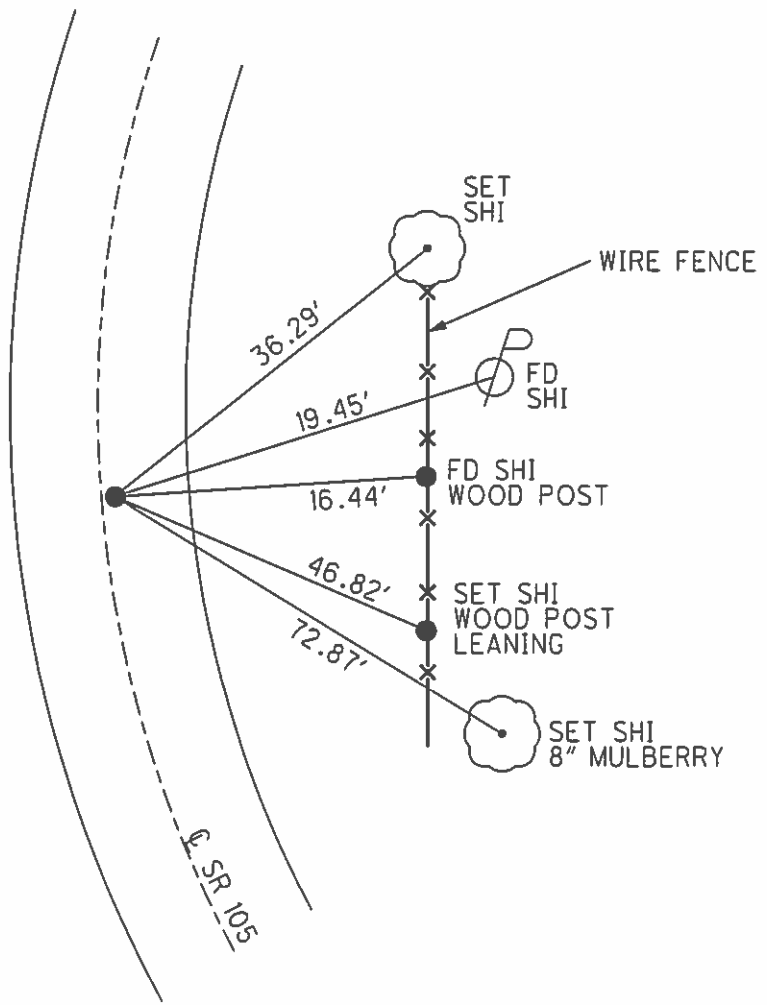
PERSONNEL \_\_\_\_\_ REFERENCE NO. 4 SHEET 11 OF 21  
 NOTES MOSER DATE 4/13/02 ROUTE SR 105  
 H.C. HUSS WEATHER CLOUDY COUNTY WOOD  
 R.C. BARNHISEL TEMP. 60° TOWNSHIP CENTER  
 SECTION 22  
 T 5 N R 11 E

TYPE MONUMENT P.K./WASHER  
 ON SURFACE - ~~BELOW~~ ON \_\_\_\_\_  
~~LEFT~~ - CL PAV'T - RIGHT 0.4'  
9.5' TO RT EDGE PAVEMENT OFF PVMT.  
 S.L.M. 116+27



GRID: NORTHING: \_\_\_\_\_ EASTING: \_\_\_\_\_

RECORD: P.I.  
 STA. 116+71.85  
 $\Delta = 2^\circ 31' 40''$  RT  
 SET P.K./WASHER  
 5/31/02, DCH



# O.D.O.T. DISTRICT 2 SURVEY OFFICE

PERSONNEL \_\_\_\_\_

REFERENCE NO. 4

SHEET 9 OF 57

NOTES LONG

H.C. VAN DUSEN

DATE 8-15-91

ROUTE 105

R.C. BARN HISEL

WEATHER clear

COUNTY WOOD

TEMP. 85°

TOWNSHIP CENTER

SECTION 22

T 5 N R 11 E

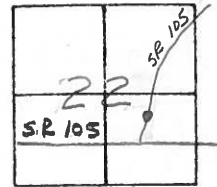
TYPE MONUMENT PK NAIL

ON SURFACE - BELOW Yes

~~LEFT~~ - C PAV'T. - RIGHT 0.5'

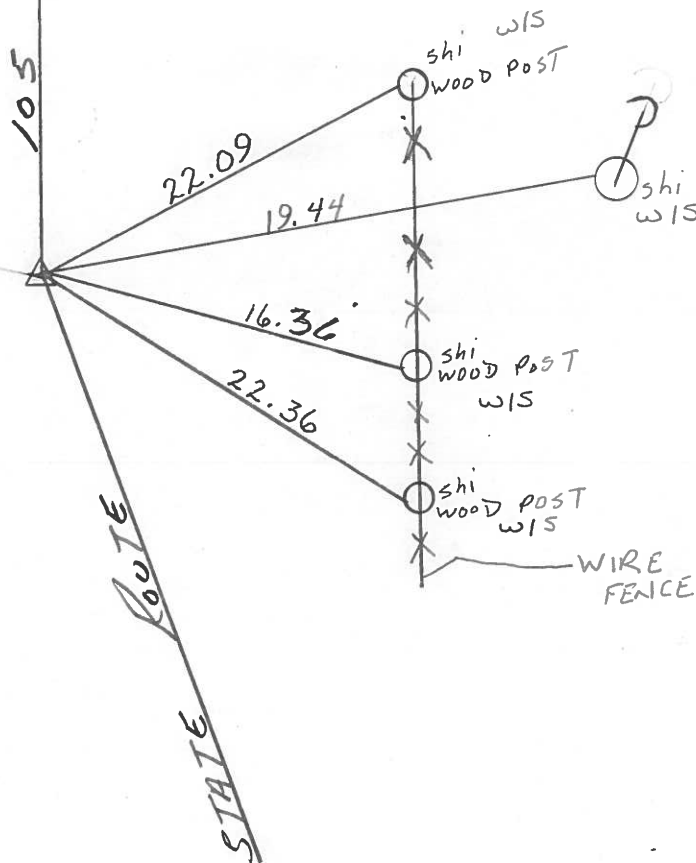
9.8 TO RT EDGE PAVEMENT

S.L.M. 116+27



Record:  
P.I. #3 STA. 116+71.85  
Δ = 2°-31'-40" RT.

SET PK & WASHER  
4-8-92  
BVD



County WOOD S.R. 105

Date 4-19-82

Township CENTER

Weather CLEAR

Section 22

Temp. +65°

T N, R E

Personnel HOFFMAN

HOUSEHOLDER

LOEHRKE

\_\_\_\_\_

\_\_\_\_\_

\_\_\_\_\_

\_\_\_\_\_

\_\_\_\_\_

\_\_\_\_\_

\_\_\_\_\_

\_\_\_\_\_

\_\_\_\_\_

\_\_\_\_\_

\_\_\_\_\_

\_\_\_\_\_

\_\_\_\_\_

\_\_\_\_\_

\_\_\_\_\_

\_\_\_\_\_

\_\_\_\_\_

\_\_\_\_\_

\_\_\_\_\_

\_\_\_\_\_

\_\_\_\_\_

\_\_\_\_\_

\_\_\_\_\_

\_\_\_\_\_

\_\_\_\_\_

\_\_\_\_\_

\_\_\_\_\_

\_\_\_\_\_

\_\_\_\_\_

\_\_\_\_\_

\_\_\_\_\_

\_\_\_\_\_

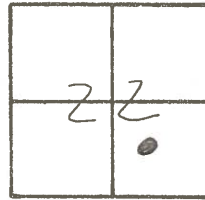
\_\_\_\_\_

\_\_\_\_\_

\_\_\_\_\_

\_\_\_\_\_

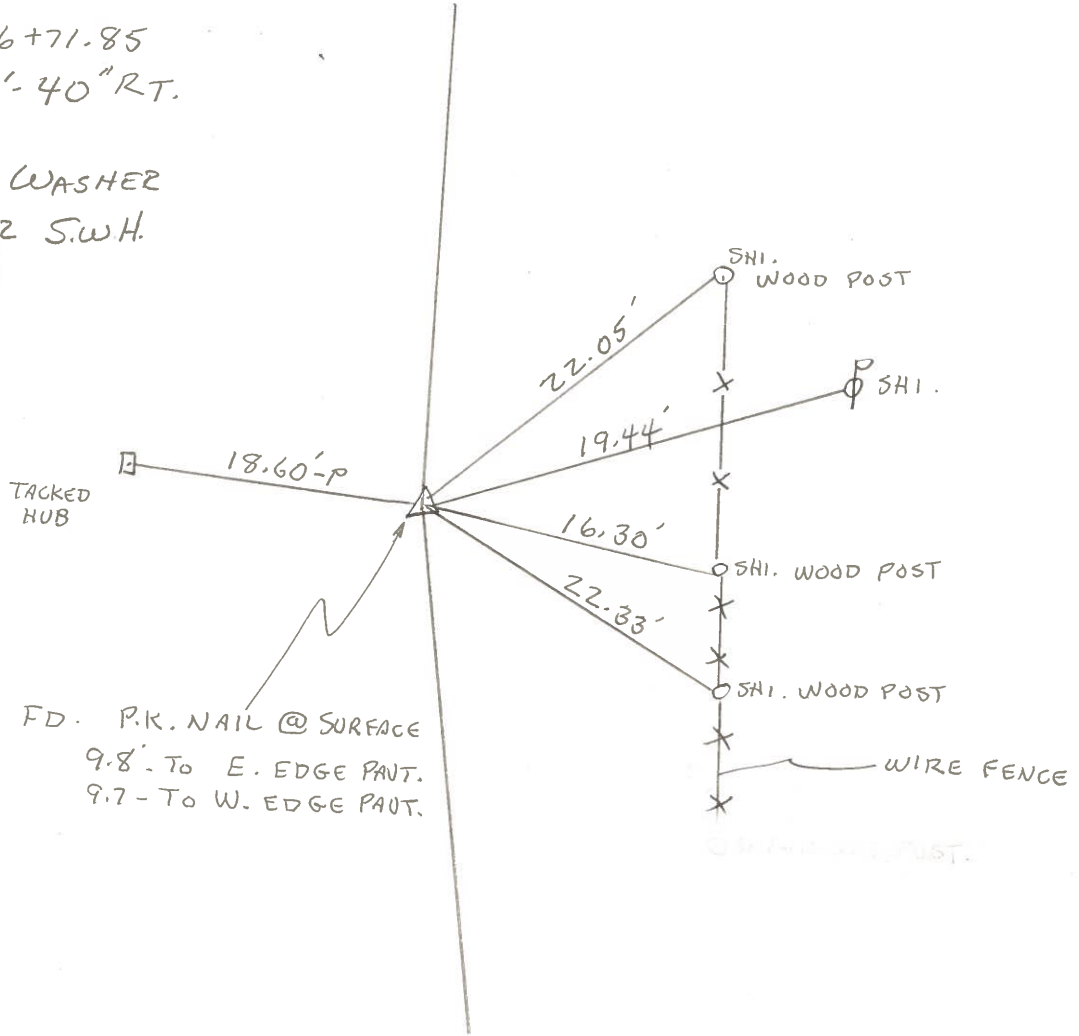
\_\_\_\_\_



#4

P.I. #3 STA. 116+71.85  
 $\Delta = 2^{\circ} 31' 40''$  RT.

SET P.K. & WASHER  
 5-24-82 S.W.H.



PERSONNEL	TITLE	PERSONNEL	TITLE	COUNTY	DATE
<u>Stone</u>	<u>Notes</u>			<u>Wood</u>	<u>28 Aug. 72</u>
<u>Deno</u>	<u>H.C.</u>			<u>S. R. #105</u>	<u>WEATHER Warm</u>
<u>Curtis</u>	<u>R.C.</u>			<u>SEC. 22</u>	<u>TEMP. 78°</u>
<u>Branner</u>	<u>RD</u>				

DESCRIPTION References to Control Points JOB NO. \_\_\_\_\_

