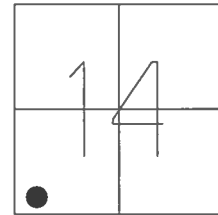


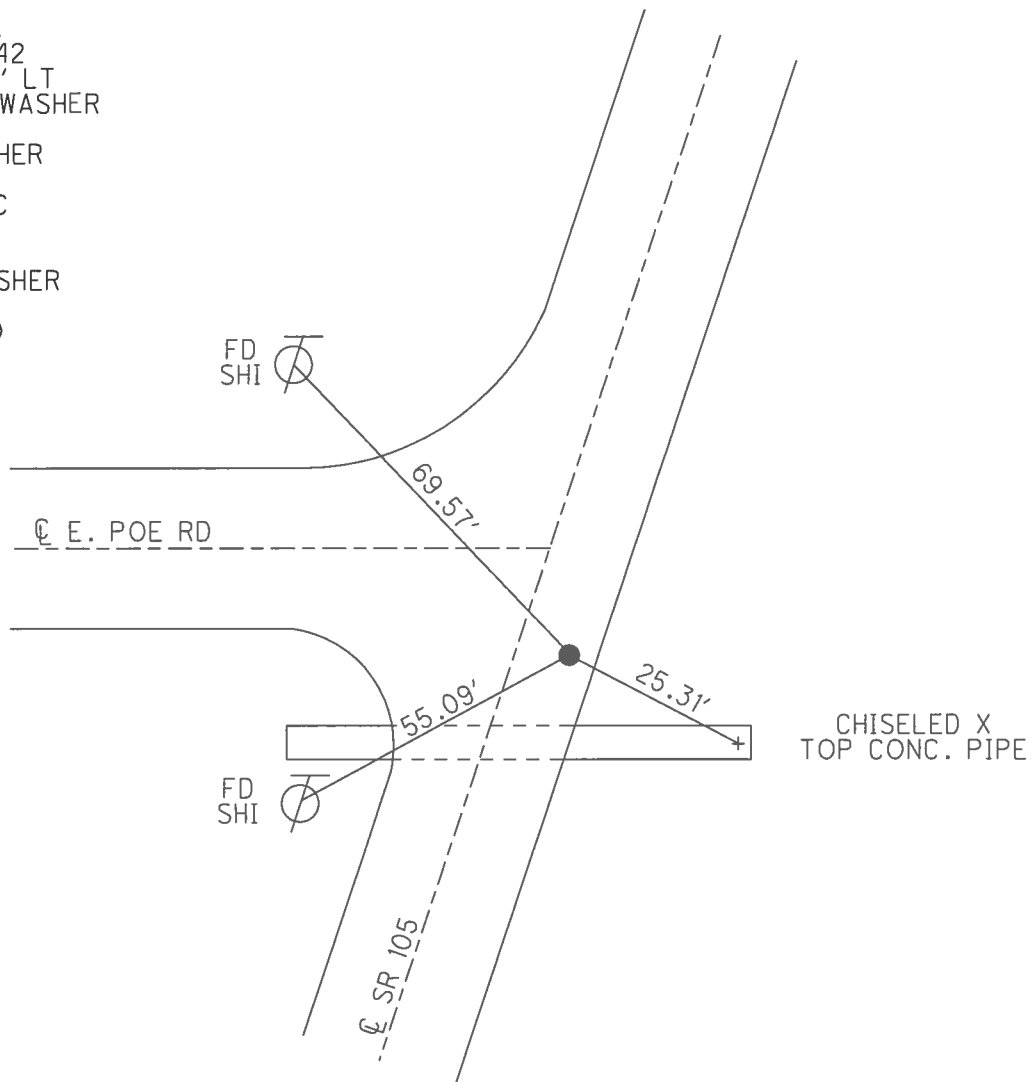
O.D.O.T. DISTRICT 2 SURVEY OFFICE (USE ONLY)

|           |               |           |                 |           |                |           |
|-----------|---------------|-----------|-----------------|-----------|----------------|-----------|
| PERSONNEL | REFERENCE NO. | <u>13</u> | SHEET           | <u>22</u> | OF             | <u>28</u> |
| NOTES     | RHOADES       | DATE      | <u>11/21/16</u> | ROUTE     | <u>SR 105</u>  |           |
| H.C.      | O'DONNELL     | WEATHER   | <u>FAIR</u>     | COUNTY    | <u>WOOD</u>    |           |
| R.C.      | RHOADES       | TEMP.     | <u>30°</u>      | TOWNSHIP  | <u>WEBSTER</u> |           |
|           |               |           |                 | SECTION   | <u>14</u>      |           |
|           |               |           |                 | T         | <u>5</u>       | N         |
|           |               |           |                 | R         | <u>11</u>      | E         |

TYPE MONUMENT MAG/WASHER  
 ON SURFACE - ~~BELOW~~ ON  
~~LEFT~~ - ℄ PAV'T - RIGHT 6.6'  
4.0' TO RT EDGE PAVEMENT  
 S.L.M. 155+02.42  
 GRID: NORTHING: 627797.155 EASTING: 1674518.200



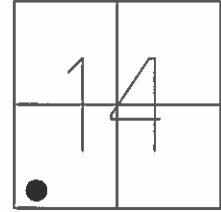
RECORD: P.I.  
 STA. 155+02.42  
 DELTA = 11°37' LT  
 SET PK AND WASHER  
 6-12-02 DCH  
 FD MAG/WASHER  
 SV3  
 7/25/12, SDC  
 D.N.F.  
 6/2/16, JFO  
 SET MAG/WASHER  
 NEWREF13  
 11/21/16, JFO



O.D.O.T. DISTRICT 2 SURVEY OFFICE (USE ONLY)

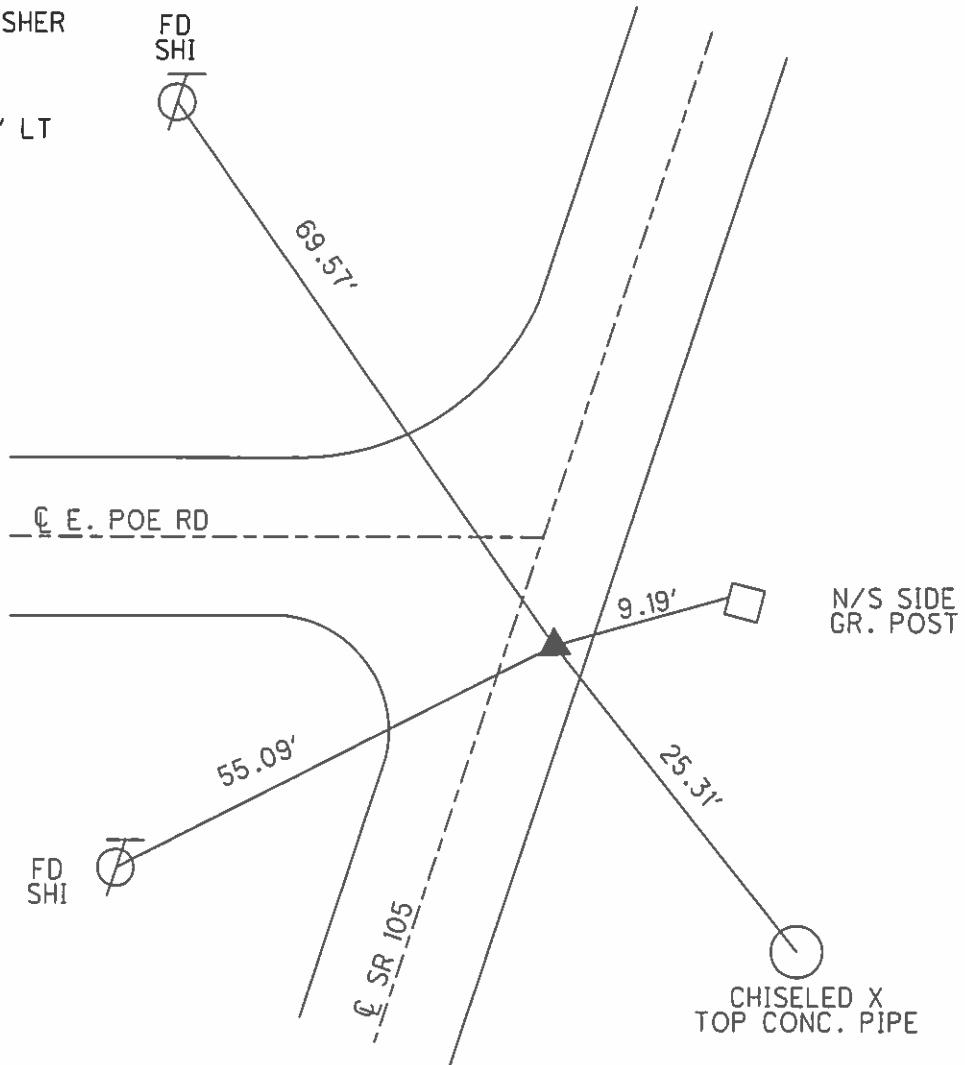
PERSONNEL \_\_\_\_\_ REFERENCE NO. 13 SHEET 1 OF 7  
 NOTES CODER DATE 7/25/12 ROUTE SR 105  
 H.C. RHOADES WEATHER CLEAR COUNTY WOOD  
 R.C. COUTCHER TEMP. 80° TOWNSHIP WEBSTER  
 \_\_\_\_\_ SECTION 14  
 \_\_\_\_\_ T 5 N R 11 E

TYPE MONUMENT MAG/WASHER  
 ON SURFACE - ~~BELOW~~ ON  
~~LEFT~~ - CL PAV'T - RIGHT 6.6'  
4.0' TO RT. EDGE PAVEMENT  
 S.L.M. 155+02.42  
 GRID: NORTHING: 627797.366 EASTING: 1674518.275



RECORD:  
 SET PK AND WASHER  
 6-12-02 DCH  
 P.I. #11  
 155+02.42  
 DELTA = 11° -37' LT

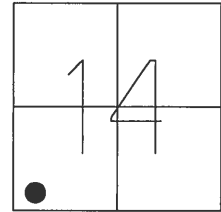
GPS, SV3  
 SDC, 7-25-12



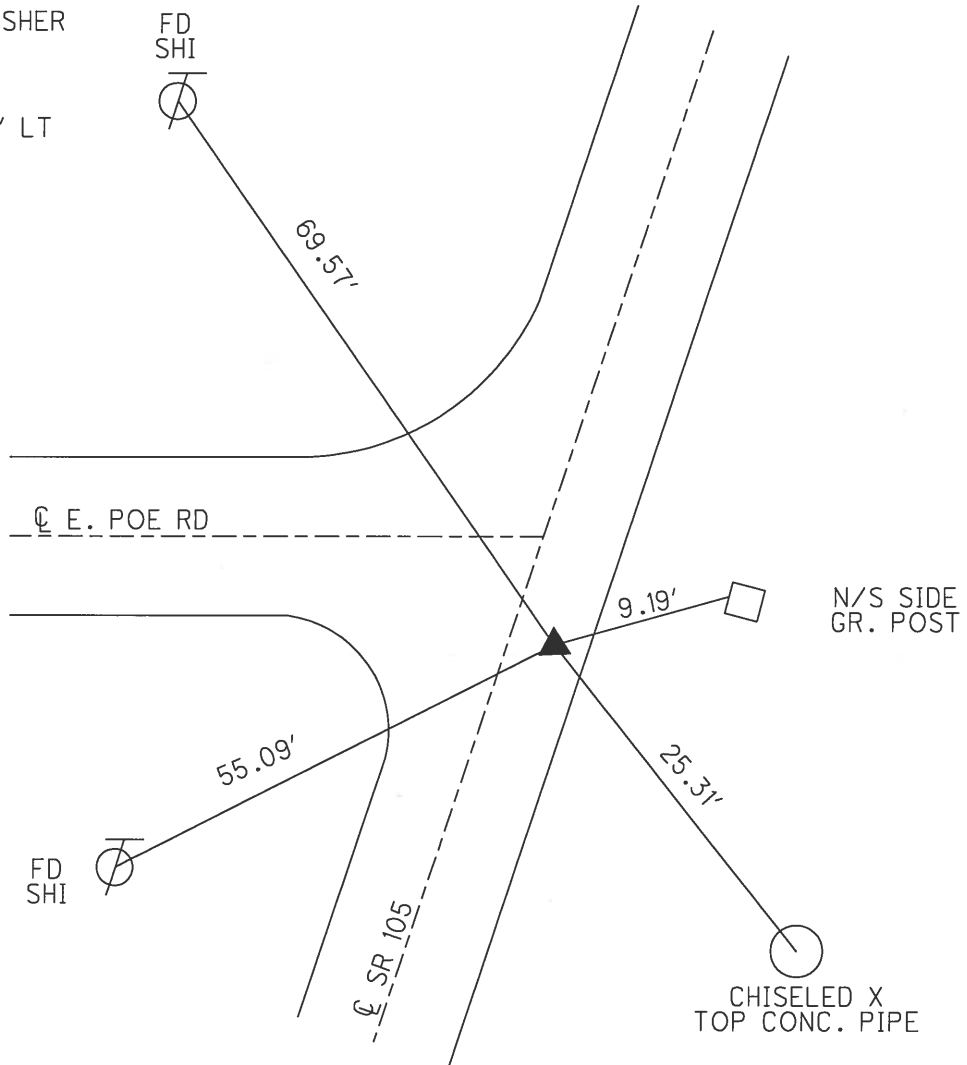
O.D.O.T. DISTRICT 2 SURVEY OFFICE (USE ONLY)

PERSONNEL \_\_\_\_\_ REFERENCE NO. 13 SHEET 1 OF 7  
 NOTES CODER DATE 7/25/12 ROUTE SR 105  
 H.C. RHOADES WEATHER CLEAR COUNTY WOOD  
 R.C. COUTCHER TEMP. 80° TOWNSHIP WEBSTER  
 \_\_\_\_\_ SECTION 14  
 \_\_\_\_\_ T 5 N R 11 E

TYPE MONUMENT MAG/WASHER  
 ON SURFACE - ~~BELOW~~ ON  
~~LEFT~~ - CL PAV'T - RIGHT 6.6'  
4.0' TO RT. EDGE PAVEMENT  
 S.L.M. 155+02.42  
 GRID: NORTHING: 627797.366 EASTING: 1674518.275



RECORD:  
 SET PK AND WASHER  
 6-12-02 DCH  
 P.I. #11  
 155+02.42  
 DELTA= 11° -37' LT  
 GPS, SV3  
 SDC, 7-25-12



O.D.O.T. DISTRICT 2 SURVEY OFFICE

PERSONNEL

REFERENCE NO. 13

SHEET 19 OF 63

NOTES MOSE

DATE 4-15-02

ROUTE SR 105

H.C. CANTERBURY

WEATHER SUNNY

COUNTY WOOD

R.C. BARNHISEL

TEMP. 70°

TOWNSHIP WEBSTER

SECTION 14

T 5 N R 11 E

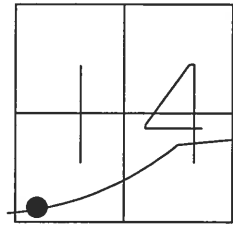
TYPE MONUMENT P.K. & WASHER

ON SURFACE - ~~BELOW~~ ON SURFACE

~~LEFT - Q PAVT - RIGHT~~ 6.9' RT.

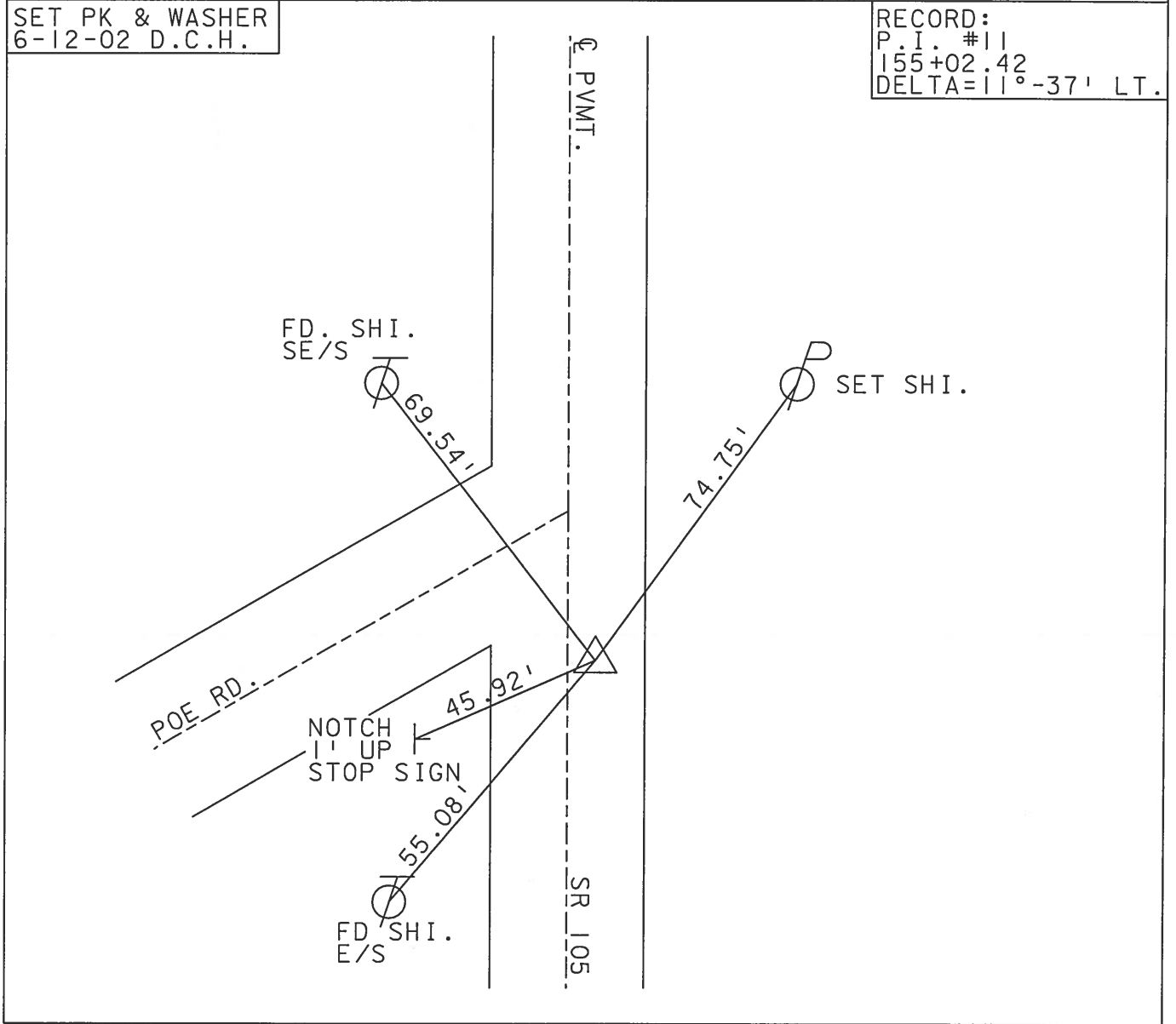
2.8' TO RT. EDGE PAVEMENT

S.L.M. 154+33



SET PK & WASHER  
6-12-02 D.C.H.

RECORD:  
P.I. #11  
155+02.42  
DELTA=11°-37' LT.



# O.D.O.T. DISTRICT 2 SURVEY OFFICE

PERSONNEL

REFERENCE NO. 13

SHEET 18 OF 57

NOTES LONG

H.C. VANDUSEN

R.C. BARNHISEL

DATE 8-19-91

WEATHER cloudy

TEMP. 71°

ROUTE 105

COUNTY WOOD

TOWNSHIP WEBSTER

SECTION 14

T 5 N R 11 E

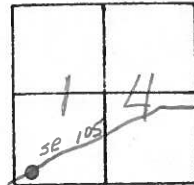
TYPE MONUMENT PK & WASHER

ON SURFACE - BELOW YES

~~LEFT~~ - C PAV'T. - R RIGHT G

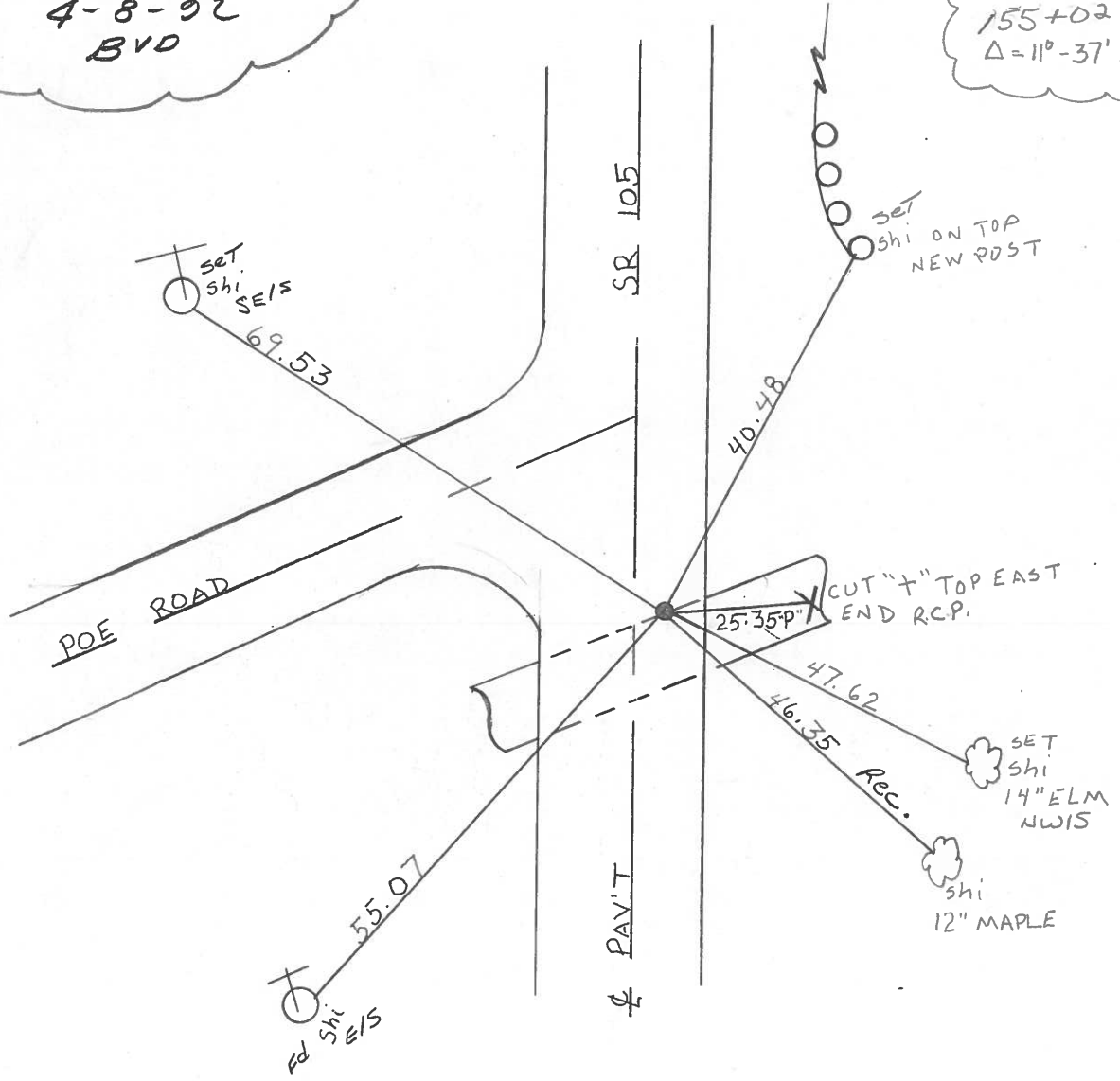
3.6 TO RT EDGE PAVEMENT

S.L.M. 154+33



SET PK & WASHER  
 4-8-92  
 BVD

RECORD  
 P.I. #11  
 155+02.42  
 $\Delta = 11^{\circ} - 37' \text{ LT.}$



OD.O.T. DISTRICT 2 SURVEY OFFICE

SHEET \_\_\_\_\_ OF \_\_\_\_\_

County Wood S.R. 105

Township Webster

Section 14

T N, R E

Personnel Hoffman

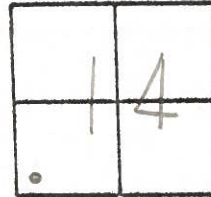
Loehrke

Householder

Date 5-24-82

Weather cloudy

Temp. +70°



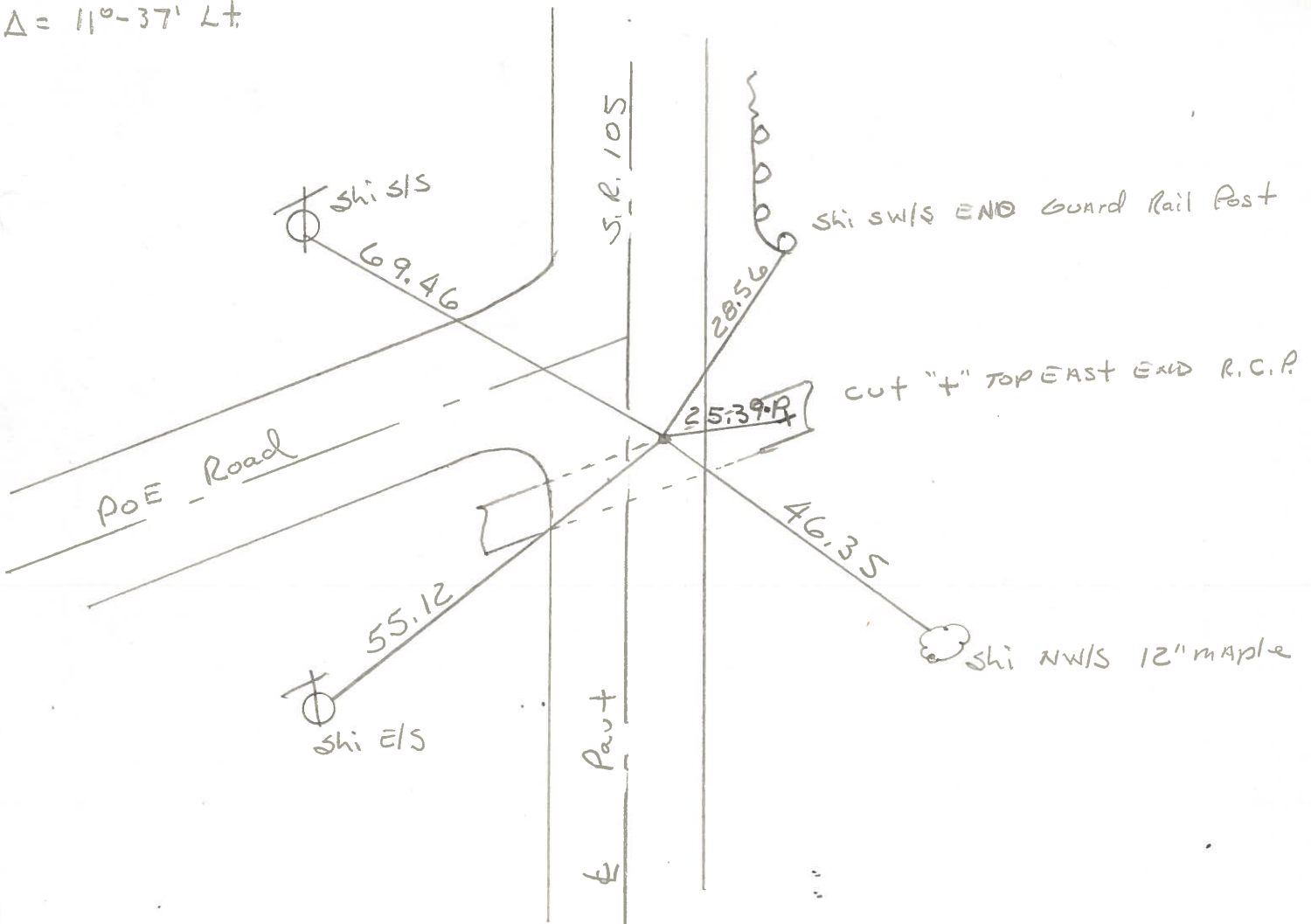
# 13

P.I. #11

155+02.42

$\Delta = 11^\circ - 37' \text{ Lt.}$

Set P.K./washer at P.I. AS per Notes By Stone, 1972



| PERSONNEL | TITLE | PERSONNEL | TITLE | COUNTY     | DATE         |
|-----------|-------|-----------|-------|------------|--------------|
| Stone     | Notes |           |       | Wood       | 22 Sept. 72  |
| Michalak  | FI    |           |       | S. R. #105 | WEATHER Cool |
| Denno     | H.C.  |           |       | SEC. 14    | TEMP. 61°    |
| Curtis    | R.C.  |           |       |            |              |

DESCRIPTION References to Control Points JOB NO. \_\_\_\_\_

