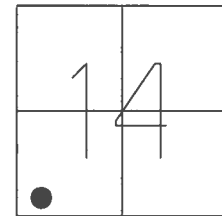


O.D.O.T. DISTRICT 2 SURVEY OFFICE (USE ONLY)

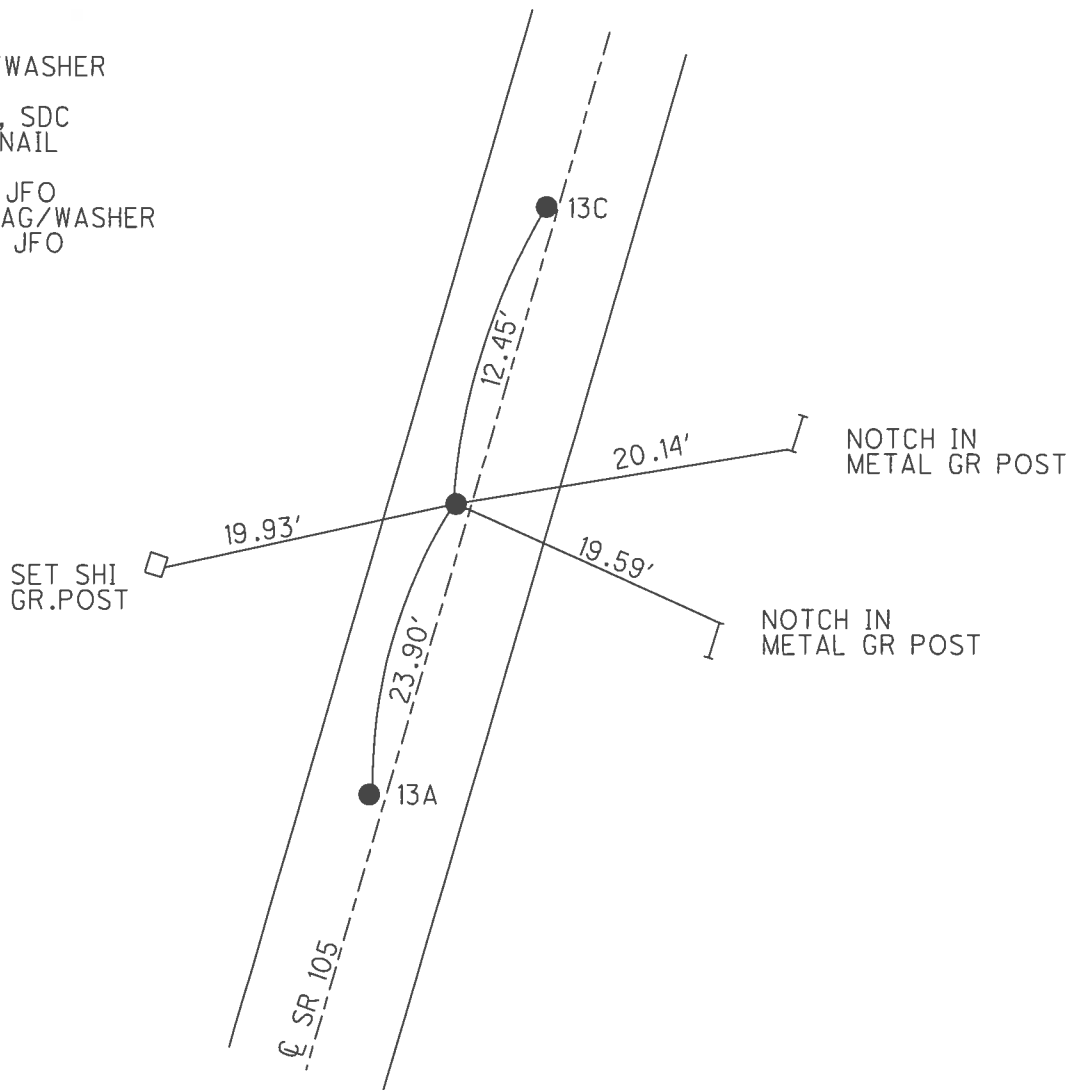
PERSONNEL _____ REFERENCE NO. 13 B SHEET 24 OF 28
 NOTES RHOADES DATE 5/31/17 ROUTE SR 105
 H.C. O'DONNELL WEATHER WINDY COUNTY WOOD
 R.C. RHOADES TEMP. 65° TOWNSHIP WEBSTER
 _____ SECTION 14
 _____ T 5 N R 11 E

TYPE MONUMENT 1" MAG/WASHER
 ON SURFACE - ~~BELOW~~ ON _____
 LEFT - CL PAV'T - ~~RIGHT~~ 1.8'
9.8' TO LT EDGE PAVEMENT
 S.L.M. 157+23.87



GRID: NORTHING: 628008.367 EASTING: 1674585.446

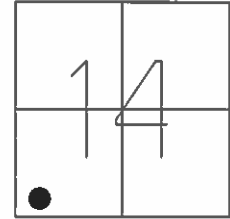
RECORD:
 FD MAG/WASHER
 FINRE19
 7/25/12, SDC
 FD MAG NAIL
 REFA13
 6/3/16, JFO
 SET 1" MAG/WASHER
 5/31/17, JFO



O.D.O.T. DISTRICT 2 SURVEY OFFICE (USE ONLY)

PERSONNEL	REFERENCE NO.	13 B	SHEET	3	OF	7
NOTES	CODER	DATE	7/25/12	ROUTE	SR 105	
H.C.	RHOADES	WEATHER	CLEAR	COUNTY	WOOD	
R.C.	COUTCHER	TEMP.	80°	TOWNSHIP	WEBSTER	
				SECTION	14	
				T	5	N
				R	11	E

TYPE MONUMENT MAG/WASHER
 ON SURFACE - ~~BELOW~~ ON
 LEFT - ☉ PAV'T - ~~RIGHT~~ 1.8'
9.8' TO LT EDGE PAVEMENT
 S.L.M. 157+23.87
 GRID: NORTHING: 628008.373 EASTING: 1674585.377



GPS, FINRE19
 SDC, 7-25-12

