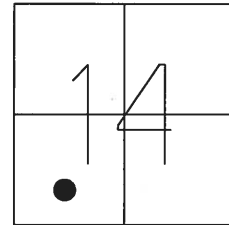


O.D.O.T. DISTRICT 2 SURVEY OFFICE (USE ONLY)

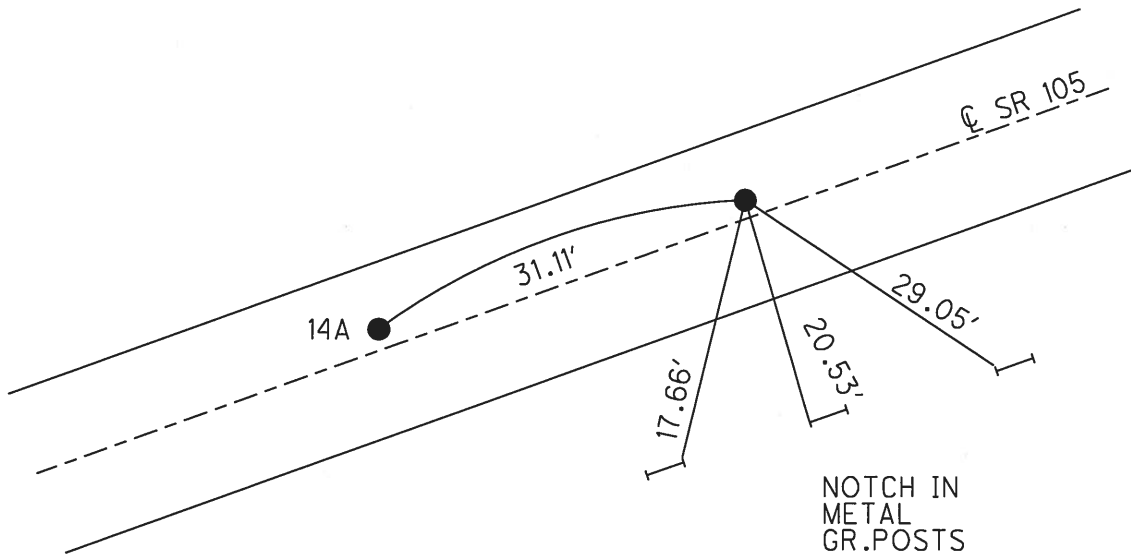
PERSONNEL _____ REFERENCE NO. 14 B SHEET 28 OF 28
 NOTES RHOADES DATE 6/3/17 ROUTE SR 105
 H.C. O'DONNELL WEATHER FAIR COUNTY WOOD
 R.C. RHOADES TEMP. 65° TOWNSHIP WEBSTER
 _____ SECTION 14
 _____ T 5 N R 11 E

TYPE MONUMENT 1" MAG/WASHER
 ON SURFACE - ~~BELOW~~ ON
 LEFT - ☉ PAV'T - ~~RIGHT~~ 1.5'
9.8' TO LT EDGE PAVEMENT
 S.L.M. 160+15



GRID: NORTHING: 628191.989 EASTING: 1674793.738

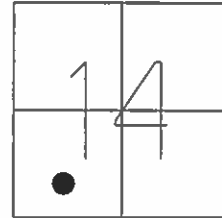
RECORD:
 FD MAG/WASHER
 FINRE07
 7/25/12, SDC
 FD MAG NAIL
 REFB14
 6/2/16, JFO
 SET 3/4" MAG/WASHER
 NEWREFB14
 6/3/17, JFO



O.D.O.T. DISTRICT 2 SURVEY OFFICE (USE ONLY)

PERSONNEL _____ REFERENCE NO. 14 B SHEET 7 OF 7
 NOTES CODER _____ DATE 7/25/12 ROUTE SR 105
 H.C. RHOADES WEATHER CLEAR COUNTY WOOD
 R.C. COUTCHER TEMP. 80° TOWNSHIP WEBSTER
 _____ SECTION 14
 _____ T 5 N R 11 E

TYPE MONUMENT P.K.NAIL
 ON SURFACE - ~~BELOW~~ ON _____
 LEFT - ☉ PAV'T - ~~RIGHT~~ 1.5'
9.8' TO LT EDGE PAVEMENT
 S.L.M. 160+15



GRID: NORTHING: 628191.996 EASTING: 1674793.661

GPS, RE07
 SDC, 7-25-12

