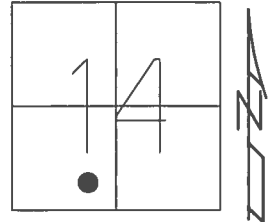


O.D.O.T. DISTRICT 2 SURVEY OFFICE (USE ONLY)

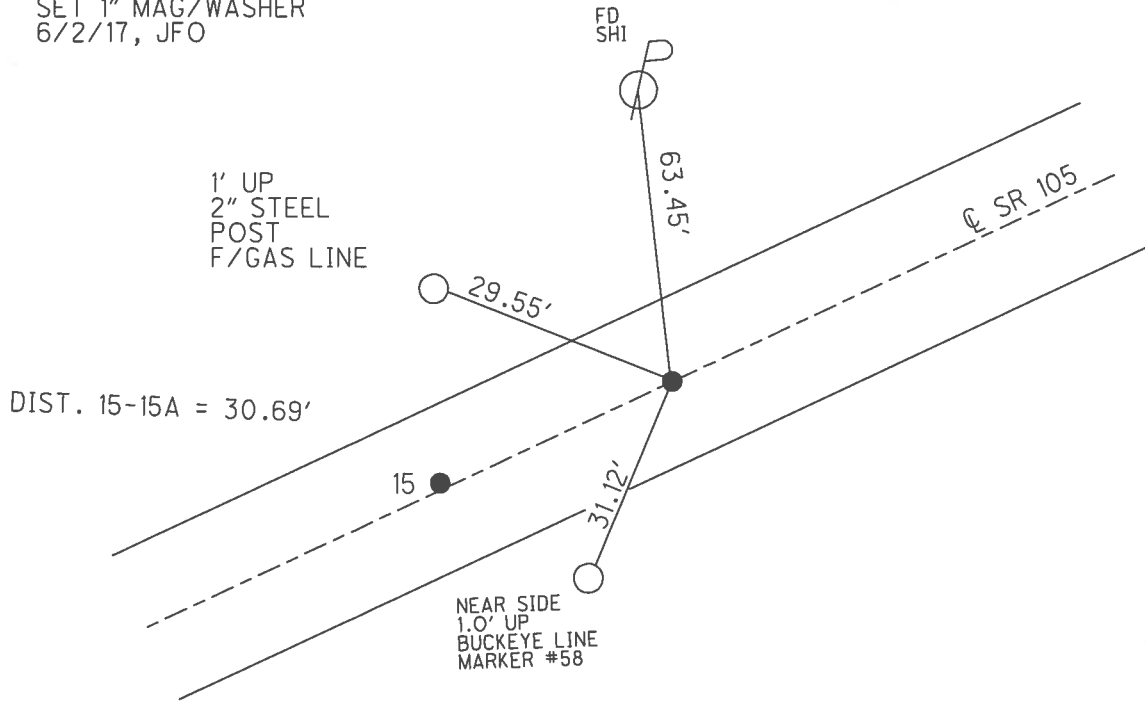
| | | | | | | |
|-----------|---------------|---------|---------|----------|---------|----|
| PERSONNEL | REFERENCE NO. | 15 A | SHEET | 2 | OF | 54 |
| NOTES | RHOADES | DATE | 9/12/16 | ROUTE | SR 105 | |
| H.C. | O'DONNELL | WEATHER | SUNNY | COUNTY | WOOD | |
| R.C. | RHOADES | TEMP. | 55° | TOWNSHIP | WEBSTER | |
| | | | | SECTION | 14 | |
| | | | | T | 5 | N |
| | | | | R | 11 | E |

TYPE MONUMENT P.K.NAIL
 ON SURFACE - BELOW ON
 LEFT - ☉ PAV'T - RIGHT ON
10' TO RT EDGE PAVEMENT
 S.L.M. 162+68



GRID: NORTHING: 628279.323 EASTING: 1675090.337

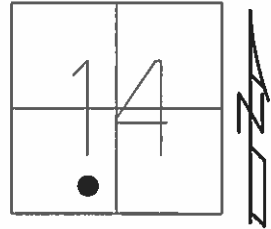
RECORD:
 SET P.K./WASHER
 6/12/02, DCH
 FD P.K.NAIL
 REFA15
 6/2/16, JFO
 SET 1" MAG/WASHER
 6/2/17, JFO



O.D.O.T. DISTRICT 2 SURVEY OFFICE (USE ONLY)

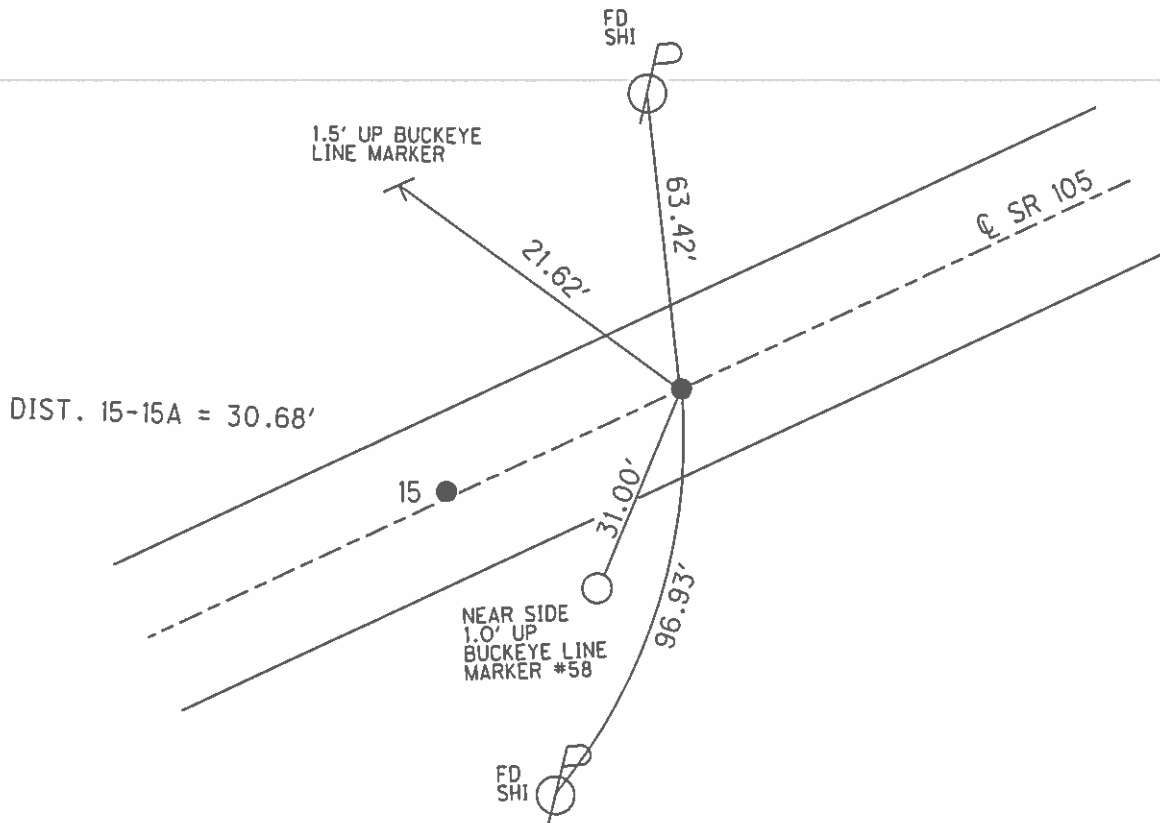
| | | | | | | |
|-----------|---------------|---------|---------|----------|---------|----|
| PERSONNEL | REFERENCE NO. | 15 A | SHEET | 2 | OF | 54 |
| NOTES | MOSE | DATE | 4/15/02 | ROUTE | SR 105 | |
| H.C. | CANTERBURY | WEATHER | SUNNY | COUNTY | WOOD | |
| R.C. | BARNHISEL | TEMP. | 75° | TOWNSHIP | WEBSTER | |
| | | | | SECTION | 14 | |
| | | | | T | 5 | N |
| | | | | R | 11 | E |

TYPE MONUMENT P.K./WASHER
 ON SURFACE - BELOW ON
 LEFT - ☉ PAV'T - RIGHT ON
10' TO RT. EDGE PAVEMENT
 S.L.M. 162+68



GRID: NORTHING: _____ EASTING: _____

RECORD:
 SET P.K./WASHER
 6/12/02, DCH



O.D.O.T. DISTRICT 2 SURVEY OFFICE

PERSONNEL _____

REFERENCE NO. 15

SHEET 20 OF 57

NOTES LONG

H.C. VANDUSEN

DATE 8-19-91

ROUTE 105

R.C. BARNHISEL

WEATHER Cloudy

COUNTY WOOD

TEMP. 75°

TOWNSHIP WEBSTER

SECTION 14

T5 N R 11 E

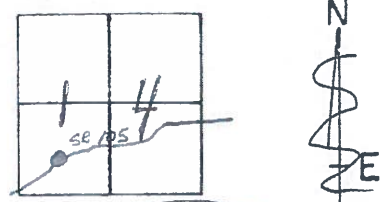
TYPE MONUMENT PK & WASHER

ON SURFACE - ~~BELOW~~ YES

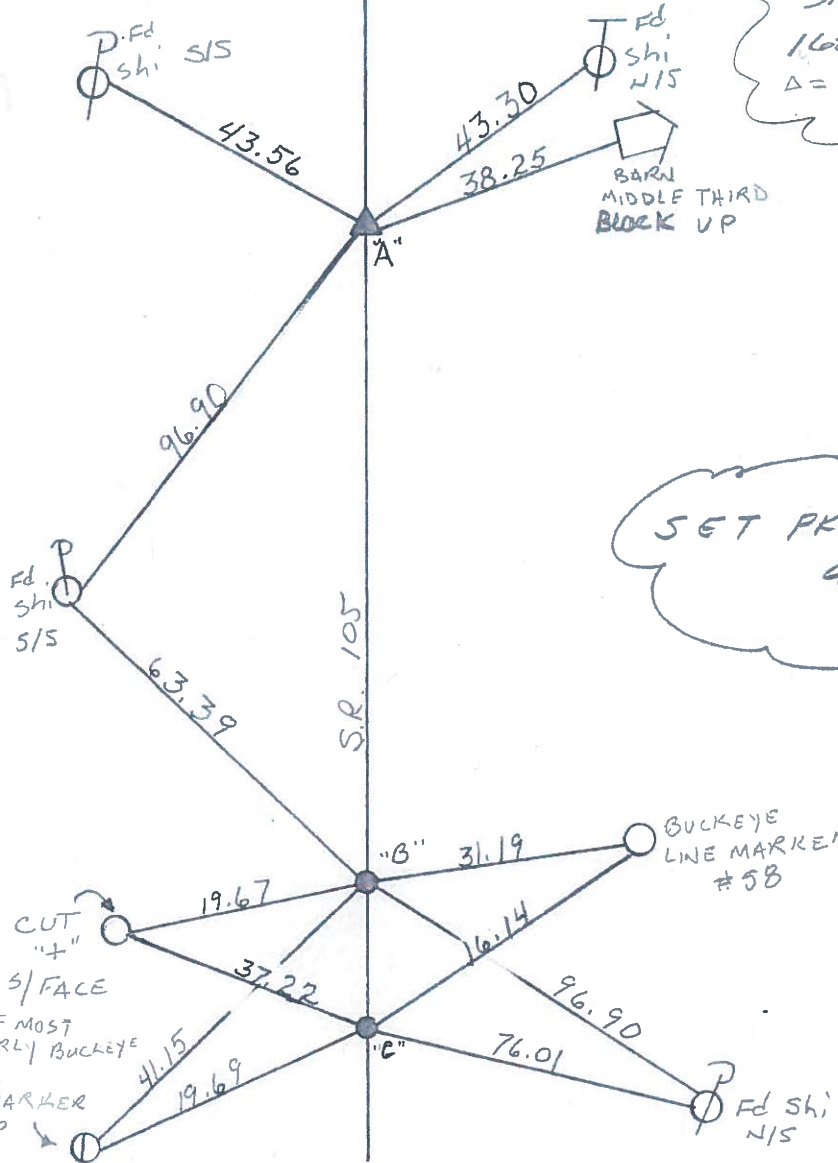
LEFT- & PAV'T. - RIGHT 0.7

10.4 TO LT EDGE PAVEMENT

S.L.M. 164+09 "A"



A=15B
B=15A
C=15



RECORD
P.I. #13
STA:
165+02.80
 $\Delta = 0^\circ - 26' - 20''$ LT,

SET PK & WASHER
4-8-92
BVD

PT. "B."
162+68

PT. "C"
162+23

OF MOST
EASTERLY BUCKEYE
PIPE
LINE MARKER
1 1/2' UP

County WOOD S.R. 105

Date 4-20-82

Township WEBSTER

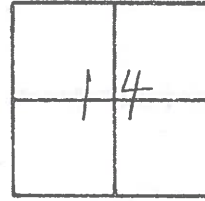
Weather RAIN

Section 14

Temp. +50°

T N, R E

Personnel HOFFMAN



15

HOUSEHOLDER

LOEHRKE

P.I. #13

165+02.80

A = 0°-26'-20" LT.

SET P.K.^s & WASHERS @ ALL POINTS 5-25-82 S.W.H.

A = 15B
B = 15A
C = 15

