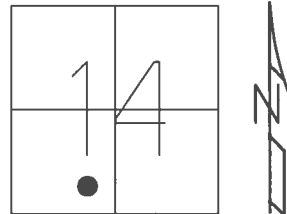


**O.D.O.T. DISTRICT 2 SURVEY OFFICE (USE ONLY)**

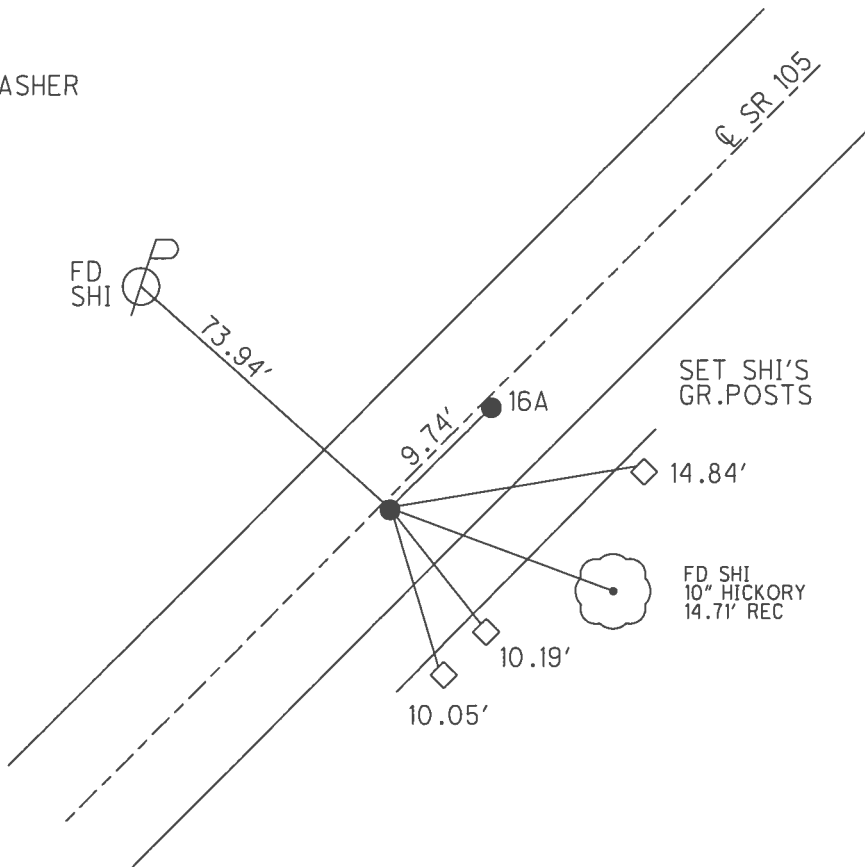
PERSONNEL \_\_\_\_\_ REFERENCE NO. 16 SHEET 4 OF 54  
 NOTES RHOADES DATE 9/12/16 ROUTE SR 105  
 H.C. O'DONNELL WEATHER SUNNY COUNTY WOOD  
 R.C. RHOADES TEMP. 55° TOWNSHIP WEBSTER  
 \_\_\_\_\_ SECTION 14  
 \_\_\_\_\_ T 5 N R 11 E

TYPE MONUMENT P.K./WASHER  
 ON SURFACE - ~~BELOW~~ ON \_\_\_\_\_  
~~LEFT~~ - Q PAV'T - RIGHT 1.0'  
8.6' TO RT EDGE PAVEMENT  
 S.L.M. 169+69



GRID: NORTHING: 628486.611 EASTING: 1675776.615

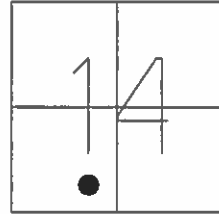
RECORD: P.I.  
 STA.170+64.11  
 $\Delta = 15^\circ 53' 20''$  LT  
 SET P.K./WASHER  
 6/12/02, DCH  
 FD P.K.NAIL  
 REF16  
 6/3/16, JFO  
 SET 1" MAG/WASHER  
 NEWREF16  
 6/20/17, JFO



**O.D.O.T. DISTRICT 2 SURVEY OFFICE (USE ONLY)**

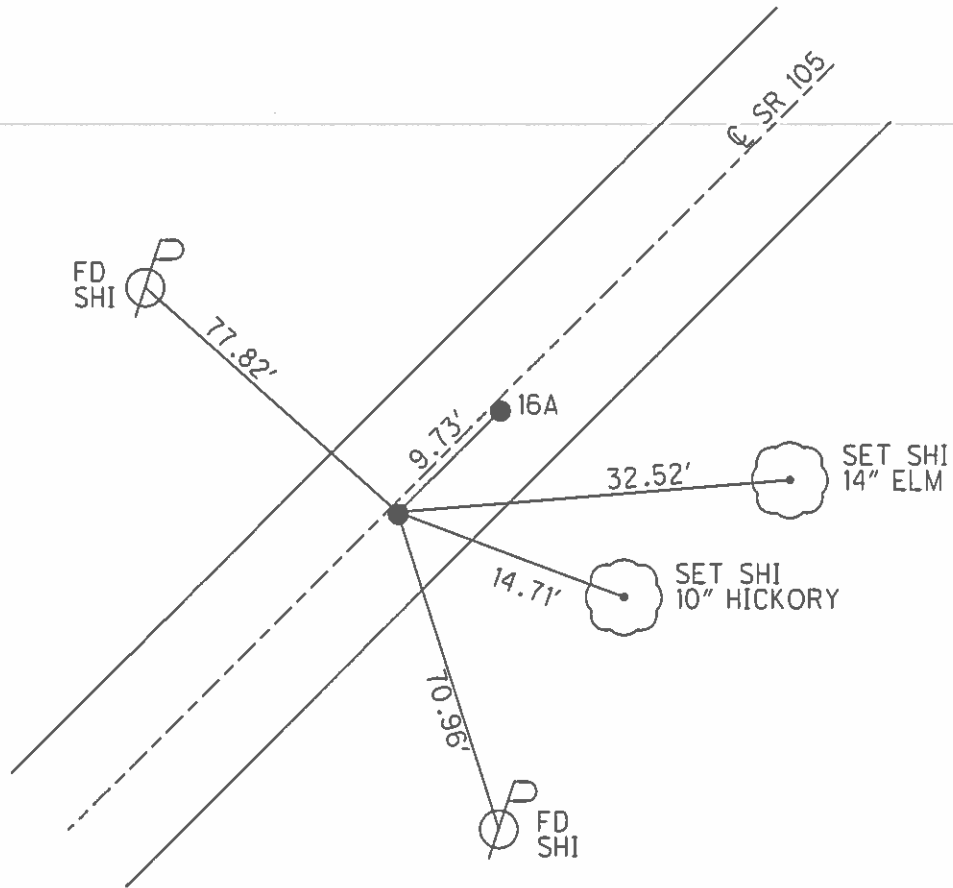
PERSONNEL	REFERENCE NO.	16	SHEET	4	OF	54
NOTES	MOSE	DATE	4/15/02	ROUTE	SR 105	
H.C.	CANTERBURY	WEATHER	SUNNY	COUNTY	WOOD	
R.C.	BARNHISEL	TEMP.	75°	TOWNSHIP	WEBSTER	
				SECTION	14	
				T	5	N
				R	11	E

TYPE MONUMENT P.K./WASHER  
 ON SURFACE - ~~BELOW~~ ON \_\_\_\_\_  
~~LEFT~~ - C PAV'T - RIGHT 1.0'  
8.6' TO RT EDGE PAVEMENT  
 S.L.M. 169+69



GRID: NORTHING: \_\_\_\_\_ EASTING: \_\_\_\_\_

RECORD: P.I.  
 STA. 170+64.11  
 $\Delta = 15^\circ 53' 20''$  LT  
 SET P.K./WASHER  
 6/12/02, DCH



# O.D.O.T. DISTRICT 2 SURVEY OFFICE

PERSONNEL

REFERENCE NO. 16

SHEET 21 OF 57

NOTES BARNHISEL

H.C. VAN DUSEN

DATE 8-19-91

ROUTE 105

R.C. BARNHISEL

WEATHER cloudy

COUNTY WOOD

TEMP. +75°

TOWNSHIP WEBSTER

SECTION 14

T 5 N R 11 E

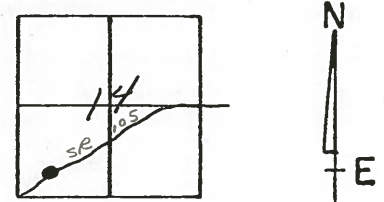
TYPE MONUMENT PT "A" & PT "B" = P.K. & WASHERS

ON SURFACE - BELOW YES

LEFT - 0 PAV'T. - RIGHT 2.7 & 6.3

"A" 3.4  
"B" 3.8 TO RT EDGE PAVEMENT

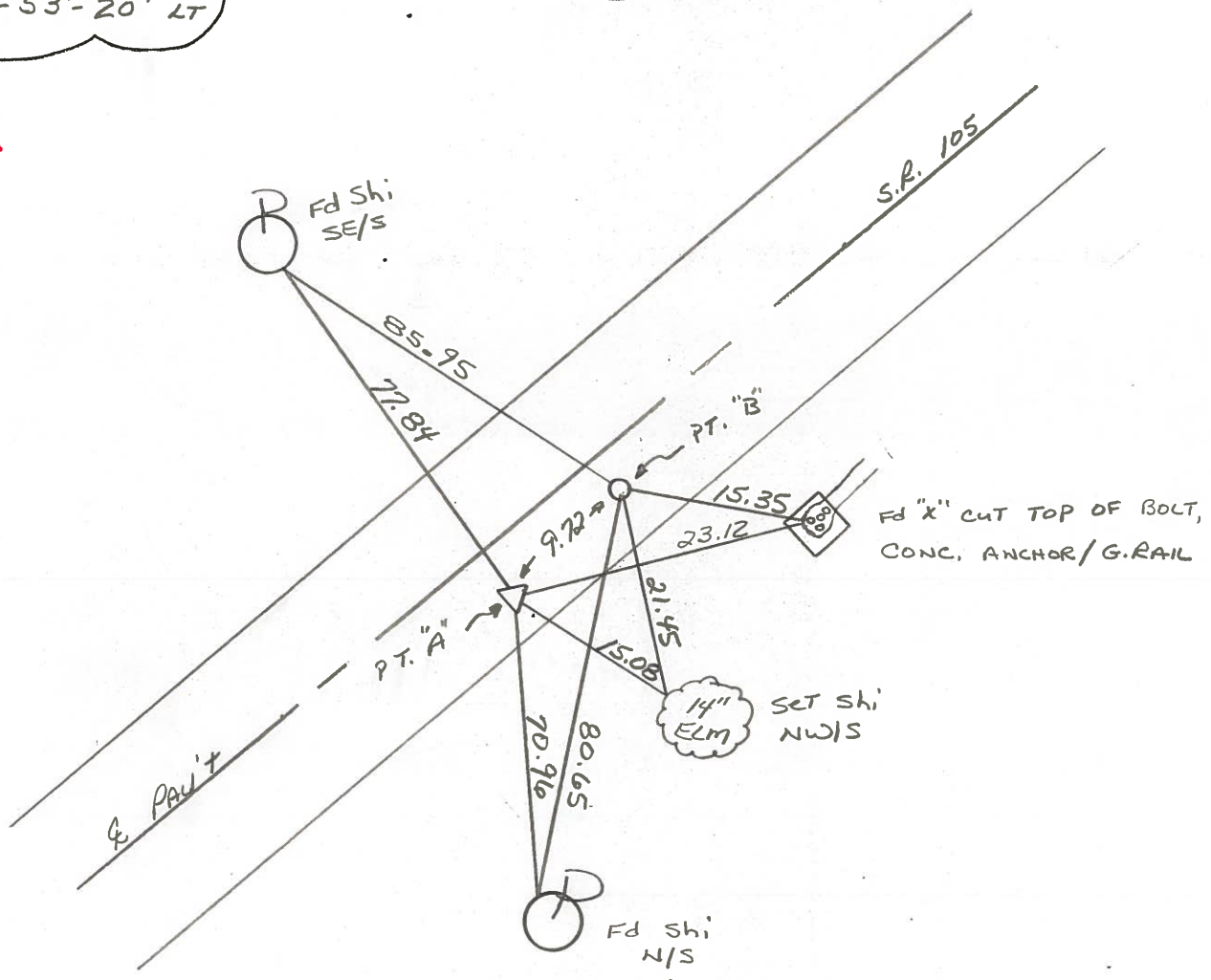
S.L.M. 169+69 ~ PT "A"



Record: PT "A"  
P.I. #14  
STA: 170+64.11  
 $\Delta = 15^\circ - 53' - 20''$  LT

SET PK'S & WASHERS  
4-8-92  
BUD

**A=16**  
**B=16A**



County WOOD S.R. 105

Township WEBSTER

Section 14

T N, R E

Personnel HOFFMAN

HOUSEHOLDER

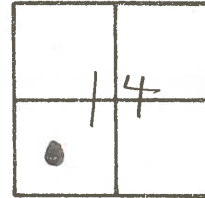
LOEHRKE

#16

Date 4-20-82

Weather RAINY

Temp. +50°



P.I. #14

170 + 64.11

$\Delta = 15^\circ - 53' - 20''$  LT.

A = 16

B = 16A

SET P.K./WASHER @

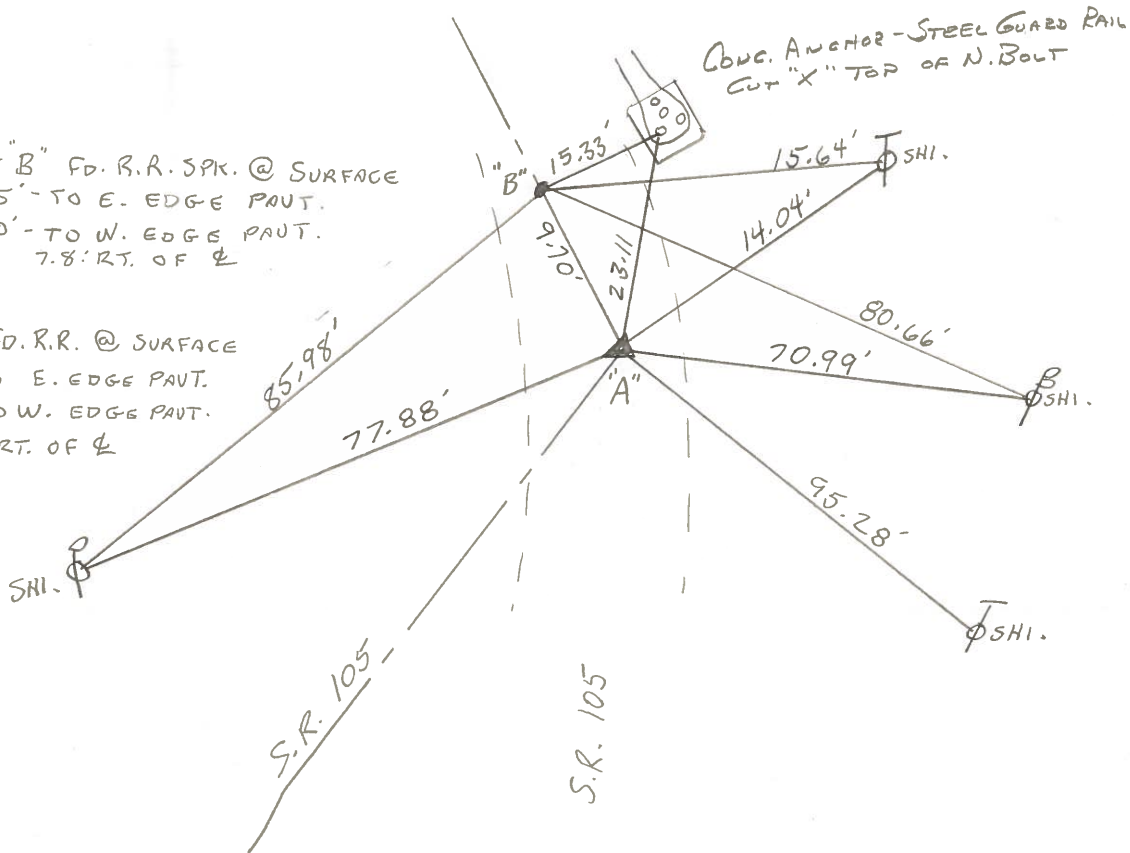
BOTH POINTS 5-25-82

S.W.H.

POINT "B" FD. R.R. SPK. @ SURFACE  
2.5' - TO E. EDGE PAWT.  
18.0' - TO W. EDGE PAWT.  
7.8' RT. OF  $\Phi$

POINT "A" FD. R.R. @ SURFACE  
2.5' - TO E. EDGE PAWT.  
18.0' - TO W. EDGE PAWT.  
6.55' RT. OF  $\Phi$

CONC. ANCHOR - STEEL GUARD RAIL  
CUT "X" TOP OF N. BOLT



PERSONNEL	TITLE	PERSONNEL	TITLE	COUNTY	DATE
Stoac	Notes			Wood	22 Sept. 72
Donna	H.C.			S. R. #105	WEATHER Cool
Michaelak	P.C.I.			SEC. 14	TEMP. 65°
Curtis	AD				

DESCRIPTION References to Control Points JOB NO. \_\_\_\_\_

