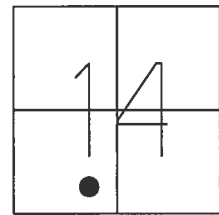


O.D.O.T. DISTRICT 2 SURVEY OFFICE (USE ONLY)

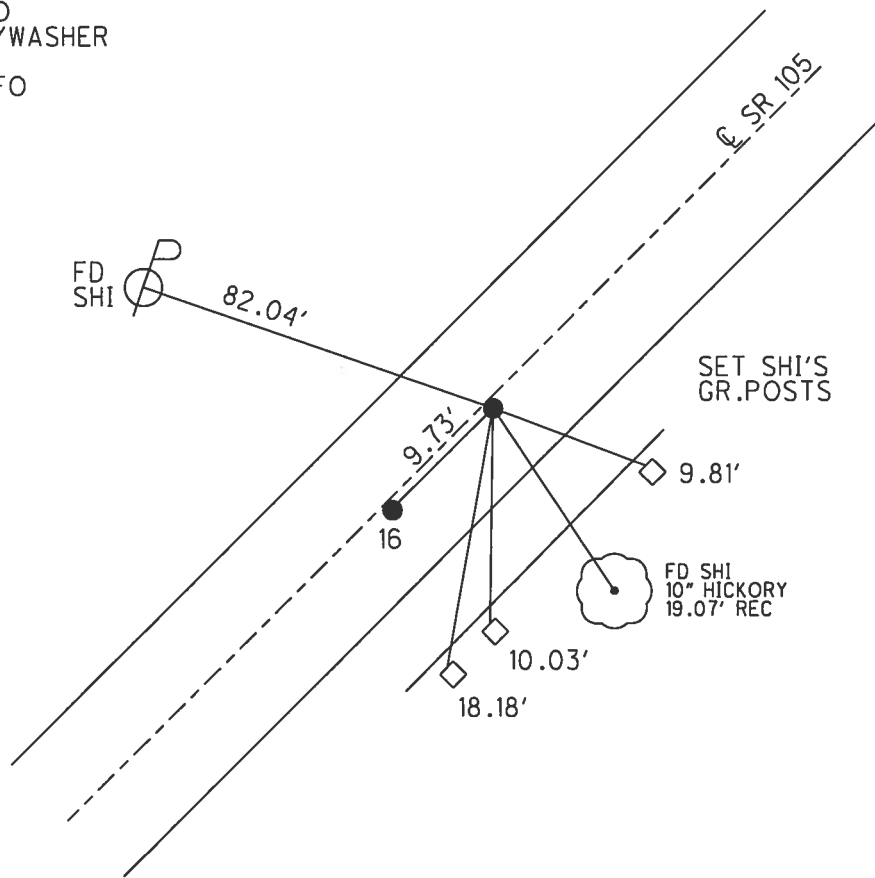
PERSONNEL _____ REFERENCE NO. 16 A SHEET 5 OF 54
 NOTES RHOADES DATE 9/12/16 ROUTE SR 105
 H.C. O'DONNELL WEATHER SUNNY COUNTY WOOD
 R.C. RHOADES TEMP. 55° TOWNSHIP WEBSTER
 _____ SECTION 14
 _____ T 5 N R 11 E

TYPE MONUMENT P.K./WASHER
 ON SURFACE - ~~BELOW~~ ON _____
~~LEFT~~ - Q PAV'T - RIGHT 2.5'
8.6' TORT EDGE PAVEMENT
 S.L.M. 169+79



GRID: NORTHING: 628491.895 EASTING: 1675784.776

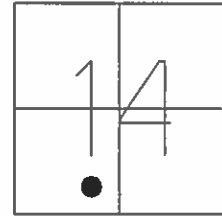
RECORD:
 SET P.K./WASHER
 6/12/02, DCH
 FD P.K./WASHER
 REFA16
 6/3/16, JFO
 SET 1" MAG/WASHER
 NEWREFA16
 6/20/17, JFO



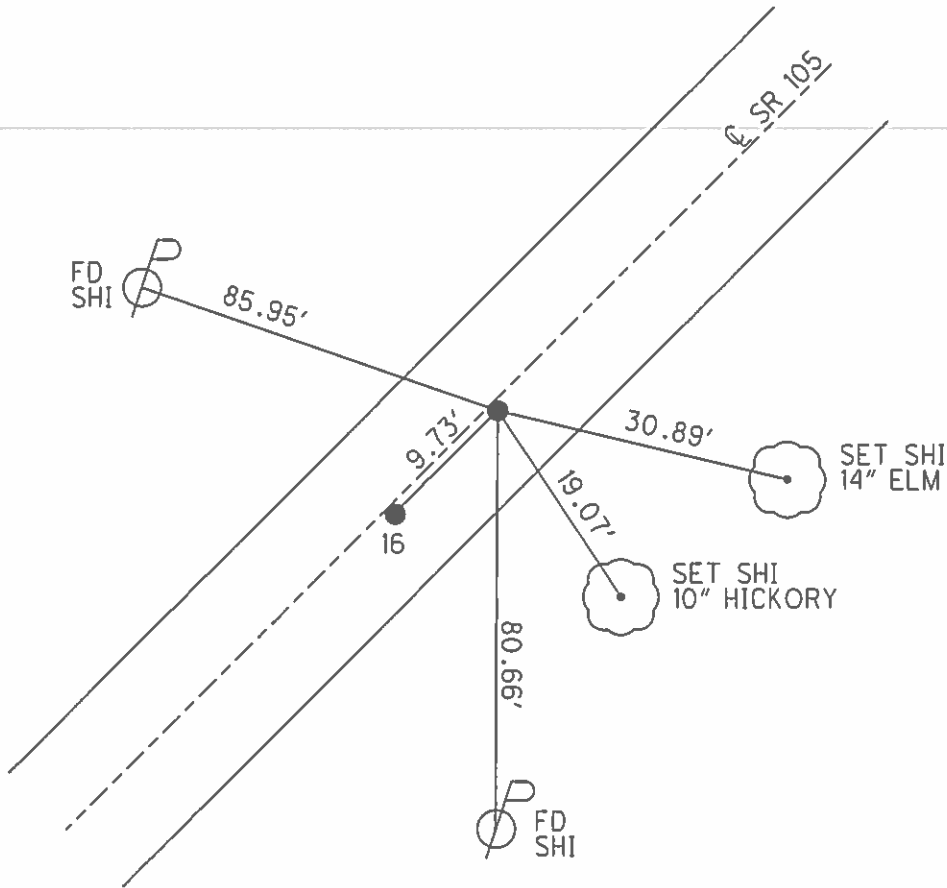
O.D.O.T. DISTRICT 2 SURVEY OFFICE (USE ONLY)

PERSONNEL _____ REFERENCE NO. 16 A SHEET 5 OF 54
 NOTES MOSER DATE 4/15/02 ROUTE SR 105
 H.C. CANTERBURY WEATHER SUNNY COUNTY WOOD
 R.C. BARNHISEL TEMP. 75° TOWNSHIP WEBSTER
 SECTION 14
 T 5 N R 11 E

TYPE MONUMENT P.K./WASHER
 ON SURFACE - ~~BELOW~~ ON
~~LEFT~~ - Q PAV'T - RIGHT 2.5'
8.6' TORT EDGE PAVEMENT
 S.L.M. 169+79
 GRID: NORTHING: _____ EASTING: _____



RECORD:
 SET P.K./WASHER
 6/12/02, DCH



O.D.O.T. DISTRICT 2 SURVEY OFFICE

PERSONNEL

REFERENCE NO. 16

SHEET 21 OF 57

NOTES BAERNHISEL

H.C. VAN DUSEN

DATE 8-19-91

ROUTE 105

R.C. BAERNHISEL

WEATHER cloudy

COUNTY WOOD

TEMP. +75°

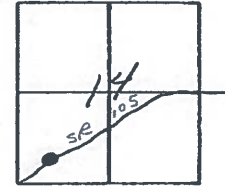
TOWNSHIP WEBSTER

SECTION 14

T 5 N R 11 E

TYPE MONUMENT PT "A" & PT "B" = P.K. & WASHERS

ON SURFACE - BELOW YES



LEFT - 0 PAV'T. - RIGHT 7.7 & 6.3

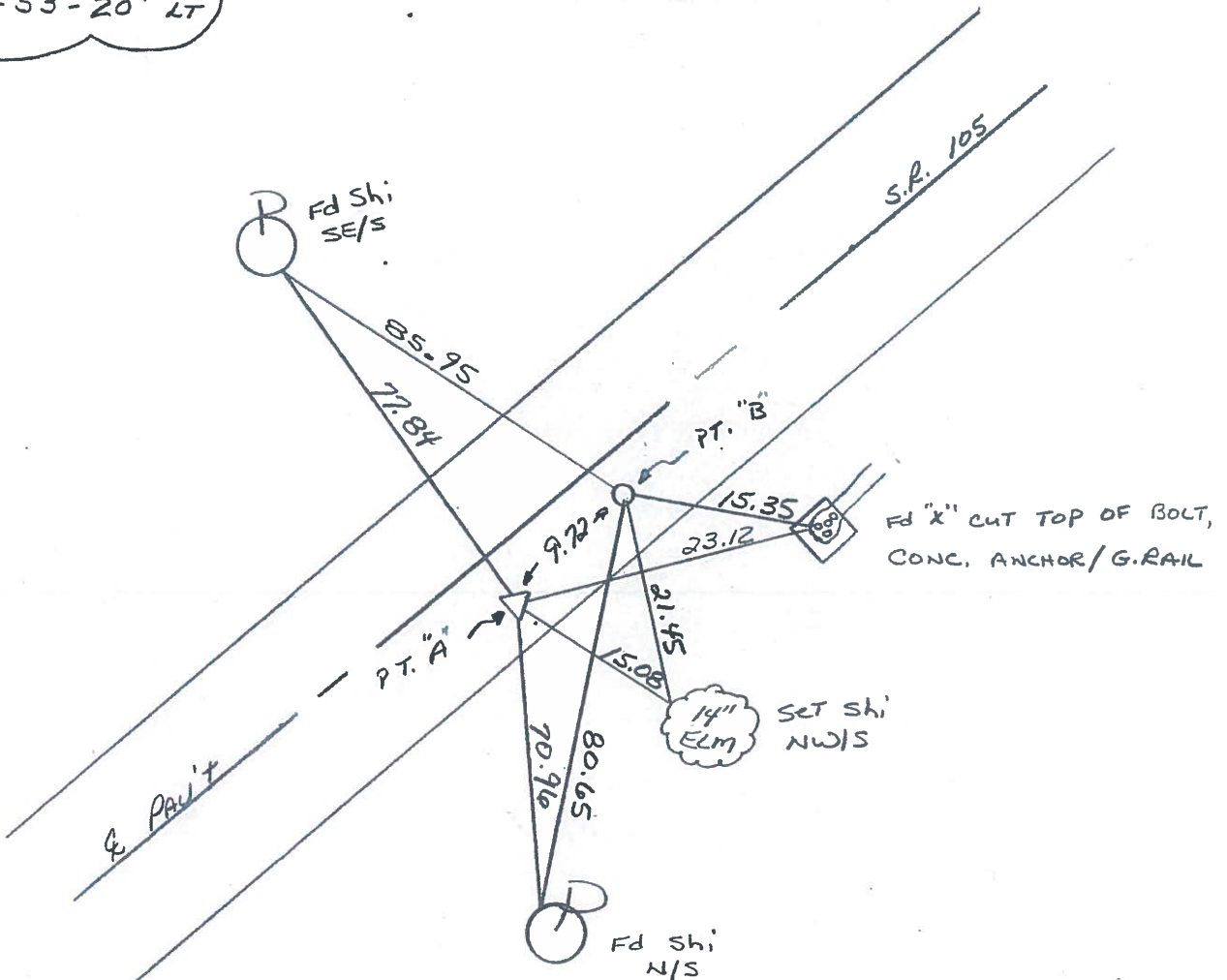
^{3.4}
^{"A"}
^{"B"} 3.8 TO RT EDGE PAVEMENT

S.L.M. 169+69 ~ PT "A"

Record: PT "A"
P.I. #14
STA: 170+64.11
A = 15°-53'-20" LT

SET PK'S & WASHERS
4-8-92
BUD

A = 16
B = 16A



County WOOD S.R. 105

Township WEBSTER

Section 14

T, N, R, E

Personnel HOFFMAN

HOUSEHOLDER

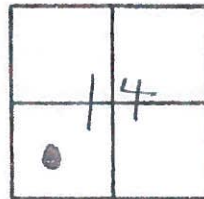
LOEHRKE

#16

Date 4-20-82

Weather RAINY

Temp. +50°



P.I. #14

170+64.11

A = 15°-53'-20" LT.

A=16

B=16A

SET P.I./WASHER @

BOTH POINTS 5-25-82
S.W.H.

CONC. ANCHOR - STEEL GUARD RAIL
CUT "X" TOP OF N. BOLT

POINT "B" FD. R.R. SPK. @ SURFACE
2.5' - TO E. EDGE PAWT.
18.0' - TO W. EDGE PAWT.
7.8' RT. OF ϕ

POINT "A" FD. R.R. @ SURFACE
2.5' - TO E. EDGE PAWT.
18.0' - TO W. EDGE PAWT.
6.55' RT. OF ϕ

