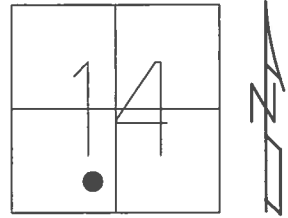


O.D.O.T. DISTRICT 2 SURVEY OFFICE (USE ONLY)

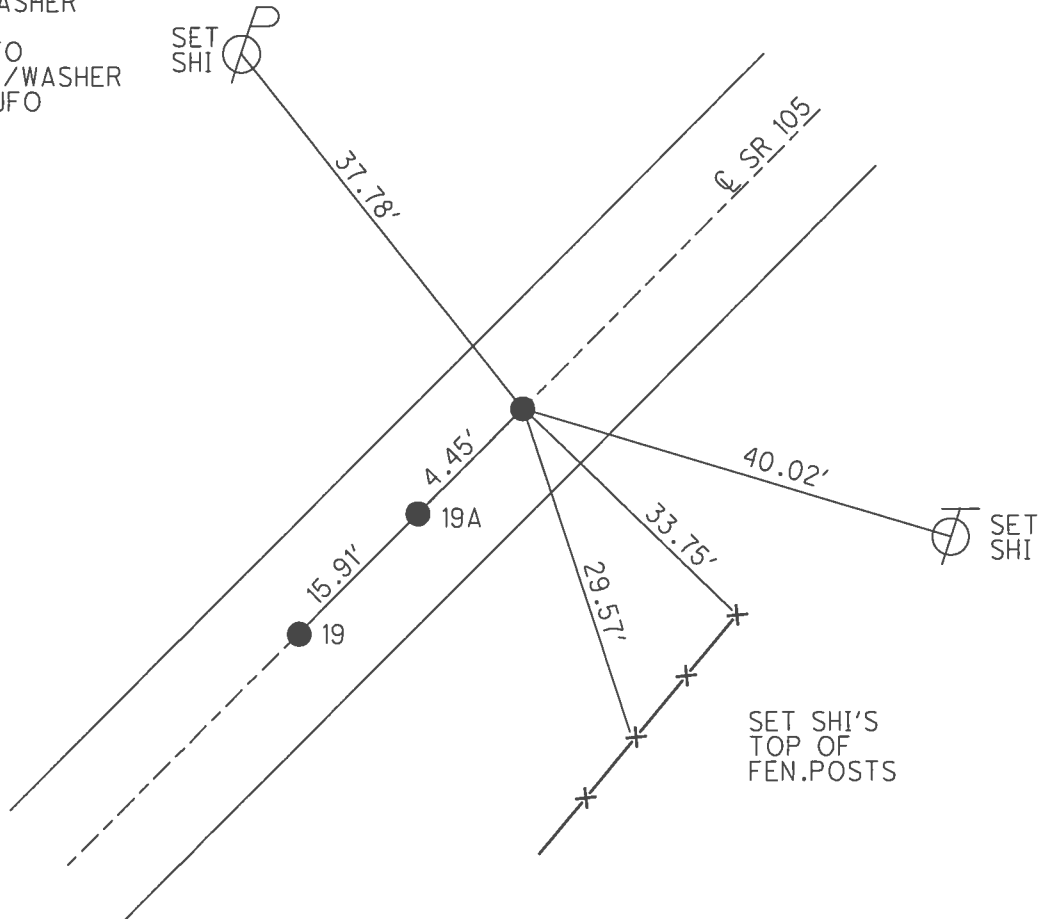
PERSONNEL _____ REFERENCE NO. 19 B SHEET 11 OF 54
 NOTES RHOADES DATE 10/13/17 ROUTE SR 105
 H.C. O'DONNELL WEATHER HAZE COUNTY WOOD
 R.C. FARKAS TEMP. 59° TOWNSHIP WEBSTER
 SECTION 14
T 5 N R 11 E

TYPE MONUMENT 1" MAG/WASHER
 ON SURFACE - ~~BELOW~~ ON
 LEFT - ☉ PAV'T - RIGHT ON
10.6' TORT EDGE PAVEMENT
 S.L.M. 177+51



GRID: NORTHING: 628872.353 EASTING: 1676457.348

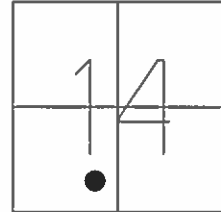
RECORD:
 FD P.K./WASHER
 4/15/02, MB
 SET P.K./WASHER
 6/12/02, DCH
 FD P.K./WASHER
 REFB19
 6/6/16, JFO
 SET 1" MAG/WASHER
 10/13/17, JFO



O.D.O.T. DISTRICT 2 SURVEY OFFICE (USE ONLY)

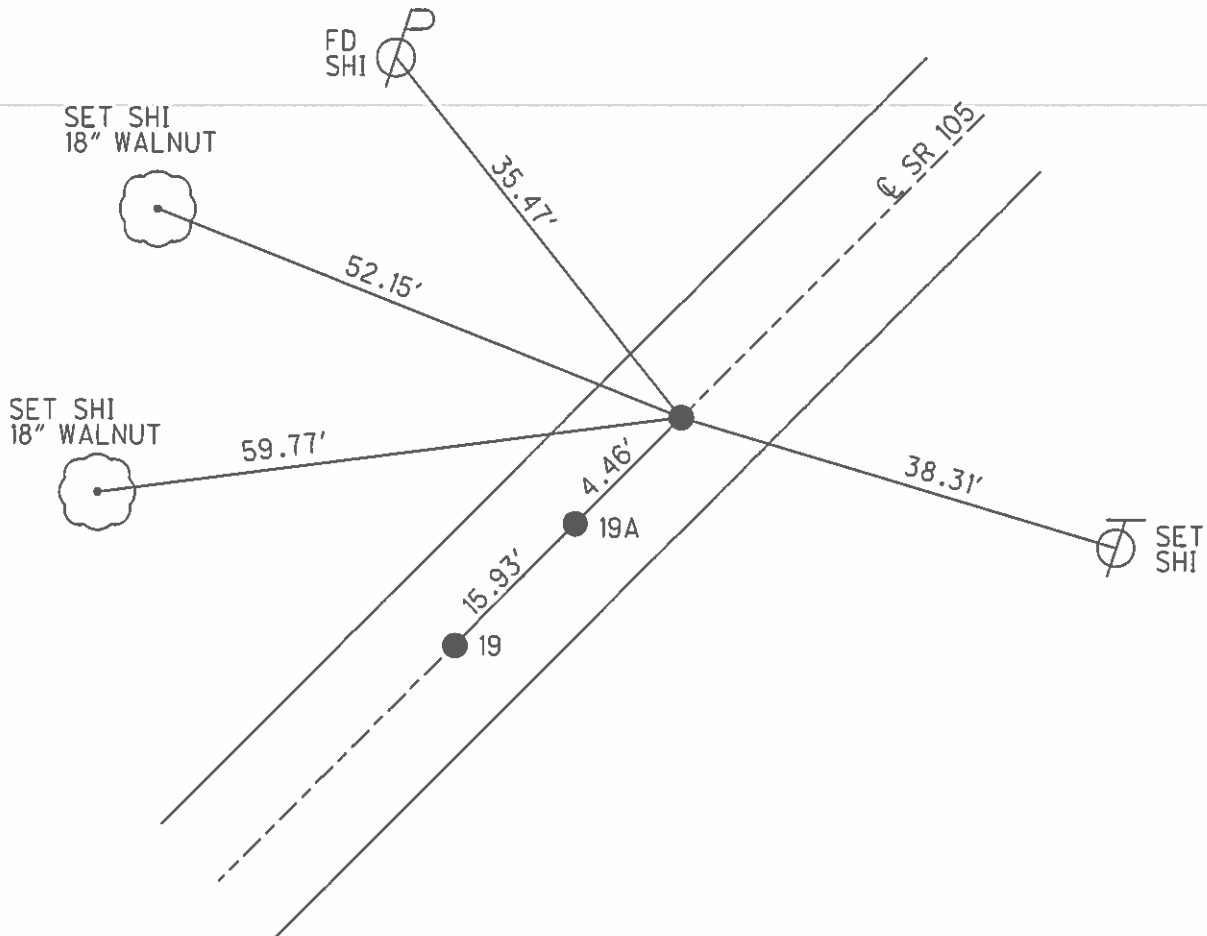
PERSONNEL _____ REFERENCE NO. 19 B SHEET 11 OF 54
 NOTES MOSE DATE 4/15/02 ROUTE SR 105
 H.C. CANTERBURY WEATHER SUNNY COUNTY WOOD
 R.C. BARNHISEL TEMP. 80° TOWNSHIP WEBSTER
 _____ SECTION 14
 _____ T 5 N R 11 E

TYPE MONUMENT P.K./WASHER
 ON SURFACE - ~~BELOW~~ ON
 LEFT - ☉ PAV'T - RIGHT ON
10.6' TORT EDGE PAVEMENT
 S.L.M. 177+51



GRID: NORTHING: _____ EASTING: _____

RECORD:
 SET P.K./WASHER
 6/12/02, DCH



O.D.O.T. DISTRICT 2 SURVEY OFFICE

PERSONNEL

REFERENCE NO. 19

SHEET 24 OF 57

NOTES BARNHISEL

H.C. VAN DUSEN

DATE 8-19-91

ROUTE 105

R.C. BARNHISEL

WEATHER cloudy

COUNTY WOOD

TEMP. +75°

TOWNSHIP WEBSTER

SECTION 14

T 5 N R 11 E

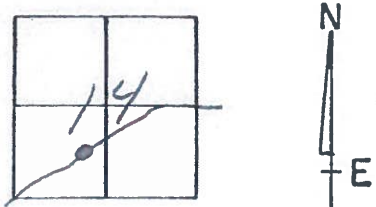
TYPE MONUMENT P.K. & WASHER ~ P.I.

ON SURFACE - BELOW yes

LEFT - ☉ PAV'T. - RIGHT yes

10.6 TO RT EDGE PAVEMENT

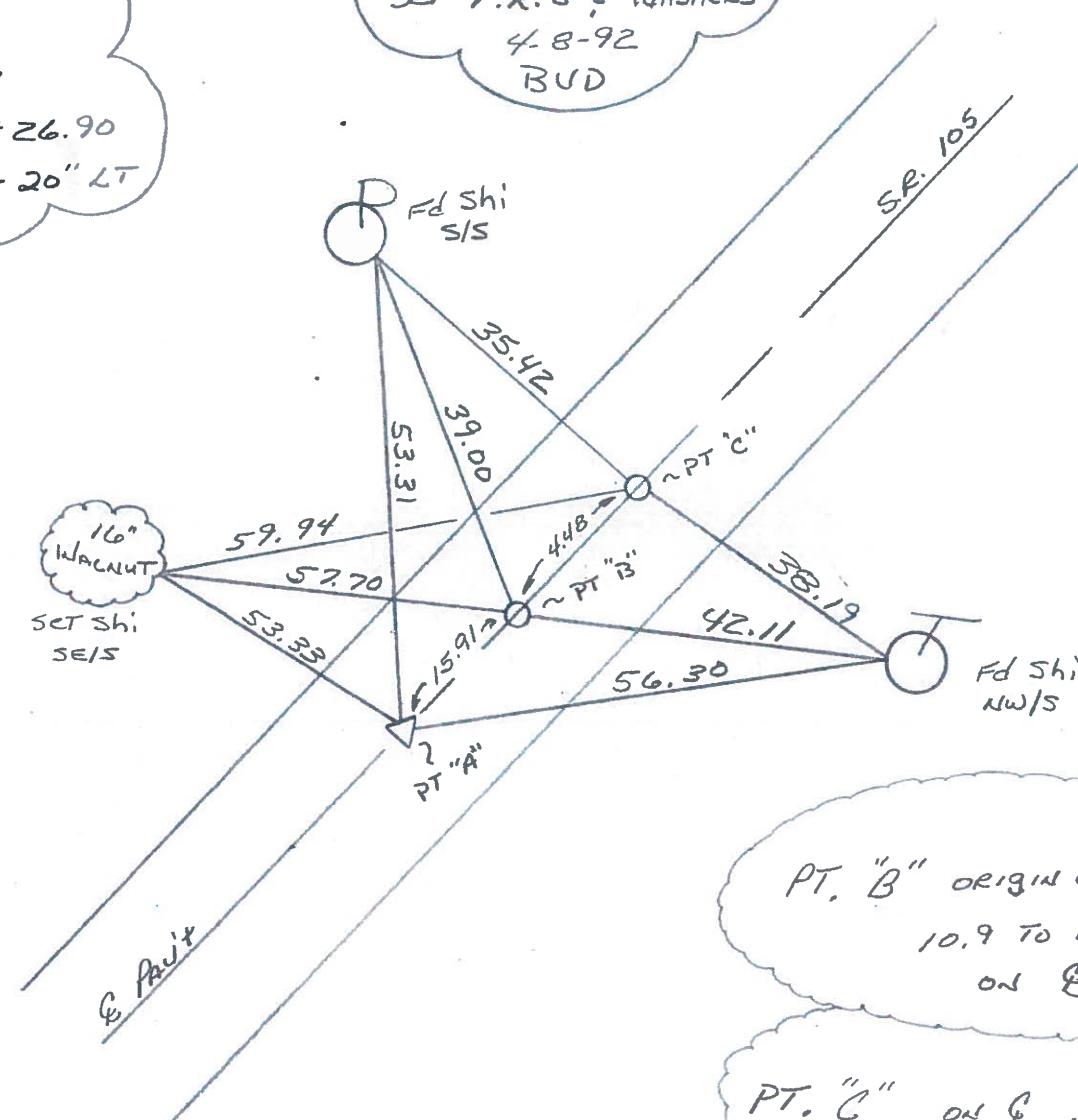
S.L.M. 177+31



PT: "A"
 Record:
 P.I. #17
 STA: 178+26.90
 Δ = 0°-47'-20" LT

SET P.K.'S & WASHERS
 4-8-92
 BUD

A = 19B 19
 B = 19A
 C = 19B



PT. "B" ORIGIN UNKNOWN
 10.9 TO RT Edge
 ON ☉

PT. "C" ON ☉
 10.6 TO RT Edge

County Wood S.R. 105

Township Webster

Section 14

T, N, R, E

Personnel HOFFMAN

Loehrke

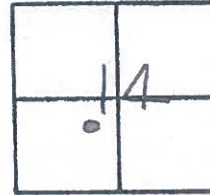
Householder

#19

Date 4-20-82

Weather LT. Rain

Temp. +50°



PT. "A" Fd. R.R. SPK @ SURFACE
(SET BY OTHERS)

P.I. #17 178+26.90

$\Delta = 0^\circ - 47' - 20''$ LT.

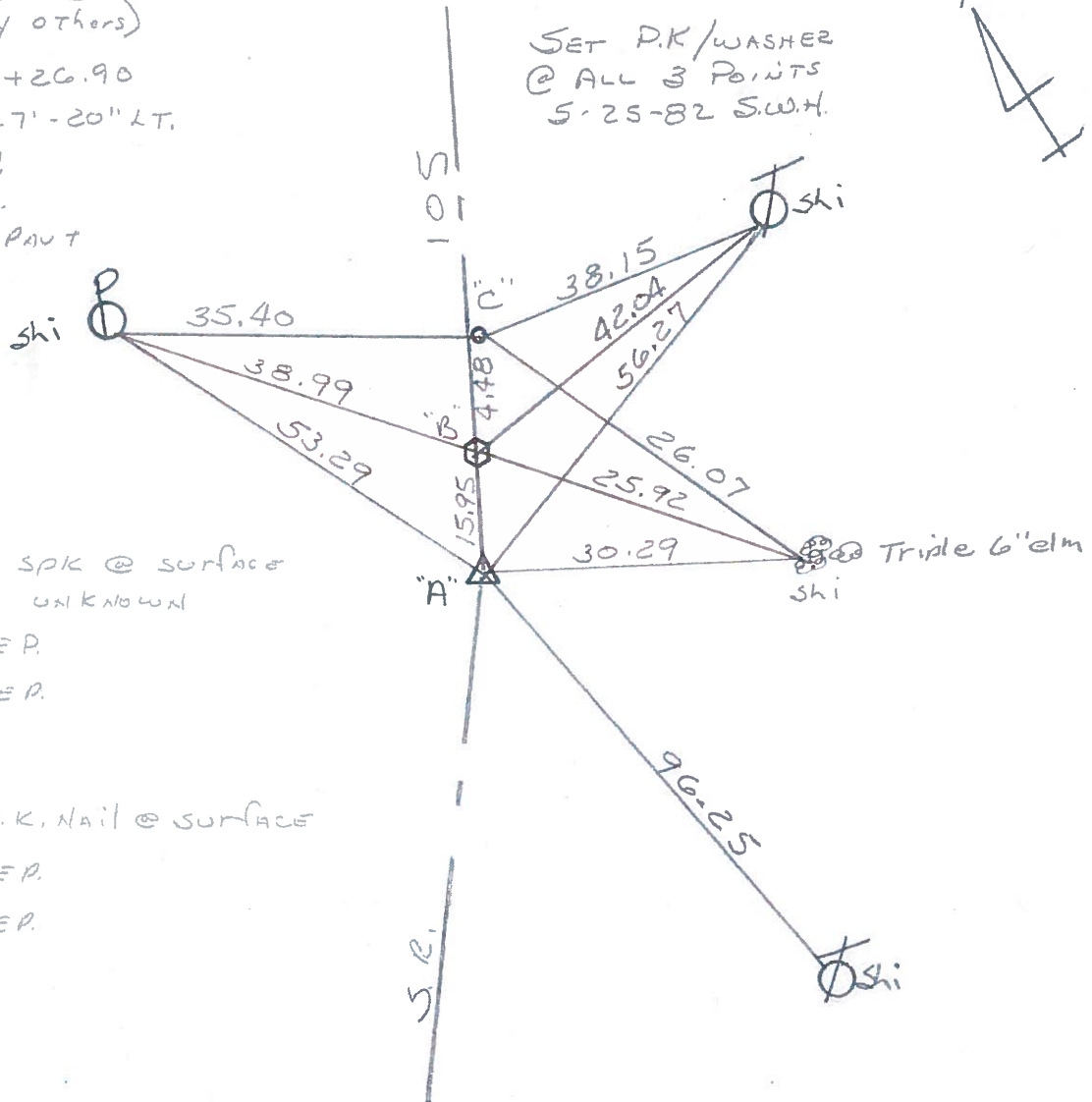
10.5 TO E.P.

9.5 TO W.P.

0.4' LT. of & PART

Project Sta ± 177+59

SET P.K./WASHER
@ ALL 3 POINTS
5-25-82 S.W.H.



PT. "B" Fd. R.R. SPK @ SURFACE
SOURCE UNKNOWN

9.5 TO W.P.

10.6 TO E.P.

PT. "C" Fd P.K. NAIL @ SURFACE

9.9 TO W.P.

10.4 TO E.P.

A = 19

B = 19A

C = 19B