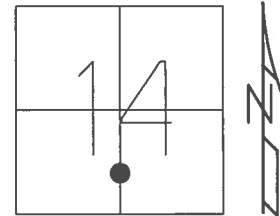


O.D.O.T. DISTRICT 2 SURVEY OFFICE (USE ONLY)

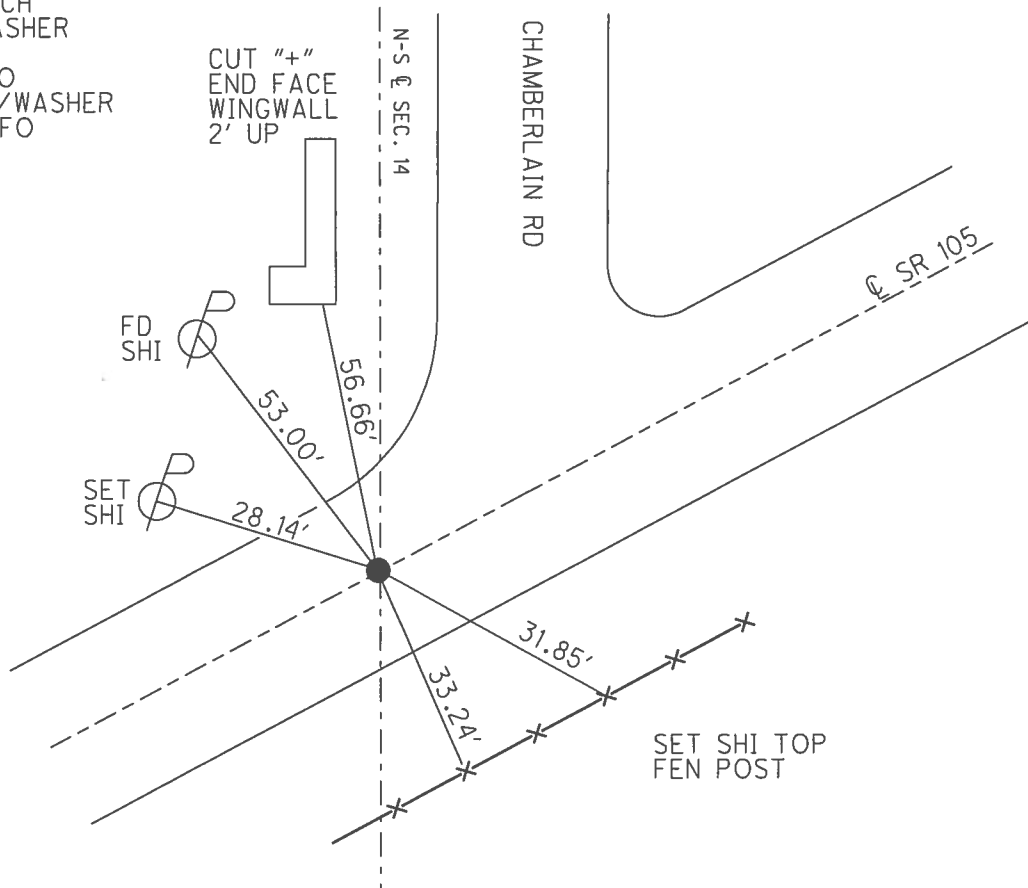
PERSONNEL _____ REFERENCE NO. 22 SHEET 15 OF 54
 NOTES RHOADES DATE 9/12/16 ROUTE SR 105
 H.C. O'DONNELL WEATHER SUNNY COUNTY WOOD
 R.C. TODD TEMP. 55° TOWNSHIP WEBSTER
 SECTION 14
 T 5 N R 11 E

TYPE MONUMENT P.K./WASHER
 ON SURFACE - ~~BELOW~~ ON _____
 LEFT - ☉ PAV'T - RIGHT _____ ON _____
10' TO RT EDGE PAVEMENT
 S.L.M. 185+64



GRID: NORTHING: 629333.759 EASTING: 1677124.241

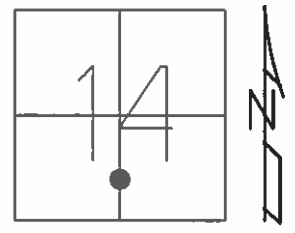
RECORD: P.I.
 STA. 186+59.18
 $\Delta = 2^{\circ}-5'-20''$ LT
 FD P.K./WASHER
 4/13/02, DCH
 SET P.K./WASHER
 6/13/02, DCH
 FD P.K./WASHER
 REF22
 6/6/16, JFO
 SET 1" MAG/WASHER
 10/13/17, JFO



O.D.O.T. DISTRICT 2 SURVEY OFFICE (USE ONLY)

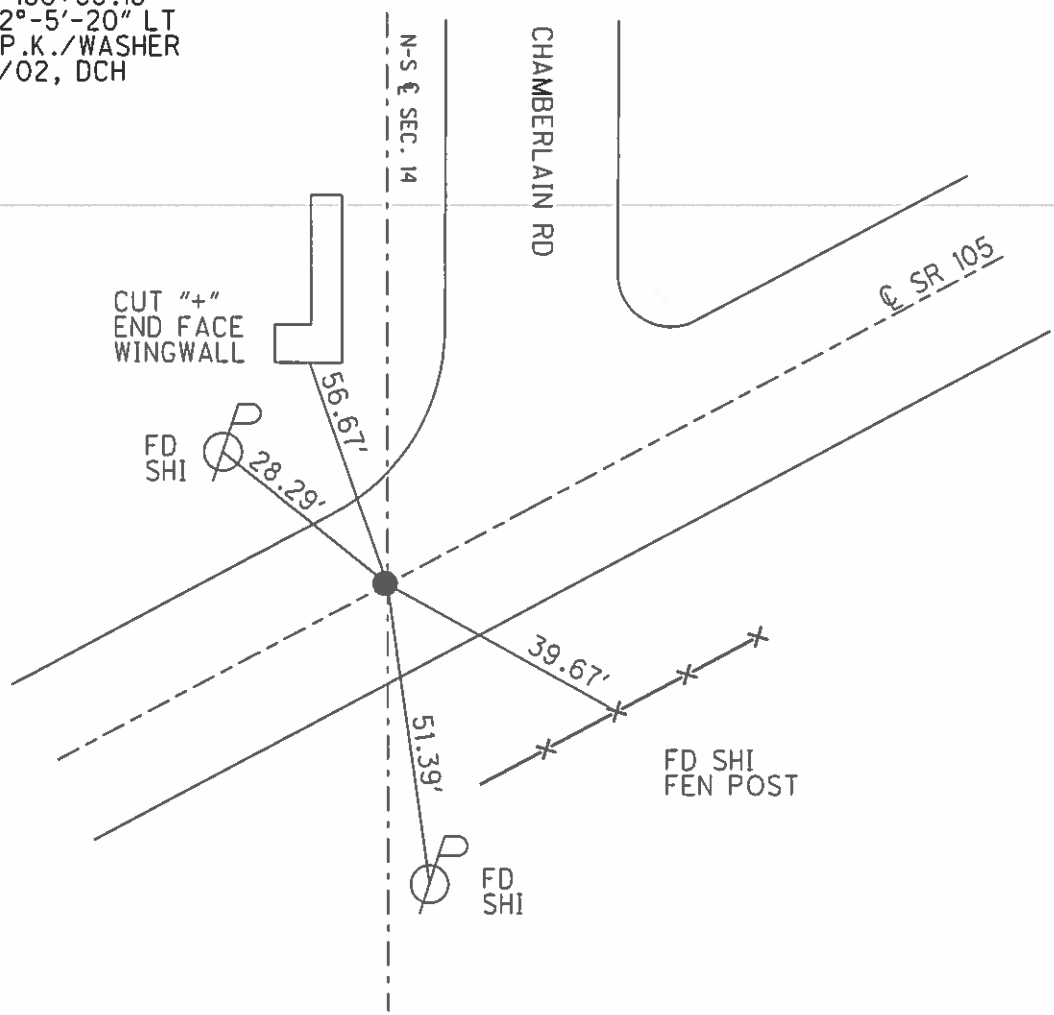
PERSONNEL _____ REFERENCE NO. 22 SHEET 15 OF 54
 NOTES HOMAN DATE 4/13/02 ROUTE SR 105
 H.C. ROUSOS WEATHER CLOUDY COUNTY WOOD
 R.C. BROWN TEMP. 50° TOWNSHIP WEBSTER
 SECTION 14
T 5 N R 11 E

TYPE MONUMENT P.K./WASHER
 ON SURFACE - ~~BELOW~~ ON
 LEFT - ☉ PAV'T - RIGHT ON
10' TO RT EDGE PAVEMENT
 S.L.M. 185+64



GRID: NORTHING: _____ EASTING: _____

RECORD: P.I.
 STA. 186+59.18
 $\Delta = 2^{\circ}-5'-20''$ LT
 SET P.K./WASHER
 6/13/02, DCH



O.D.O.T. DISTRICT 2 SURVEY OFFICE

PERSONNEL _____

REFERENCE NO. 22

SHEET 27 OF 57

NOTES LONG

H.C. VAN DUSEN

R.C. BARNHISEL

DATE 8-19-91

WEATHER CLOUDY

TEMP. 75°

ROUTE 105

COUNTY WOOD

TOWNSHIP WEBSTER

SECTION 14

T5 N R 11 E

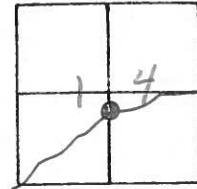
TYPE MONUMENT P.K. / WASHER

ON SURFACE - BELOW YES

~~LEFT - & PAV'T. - RIGHT~~ yes

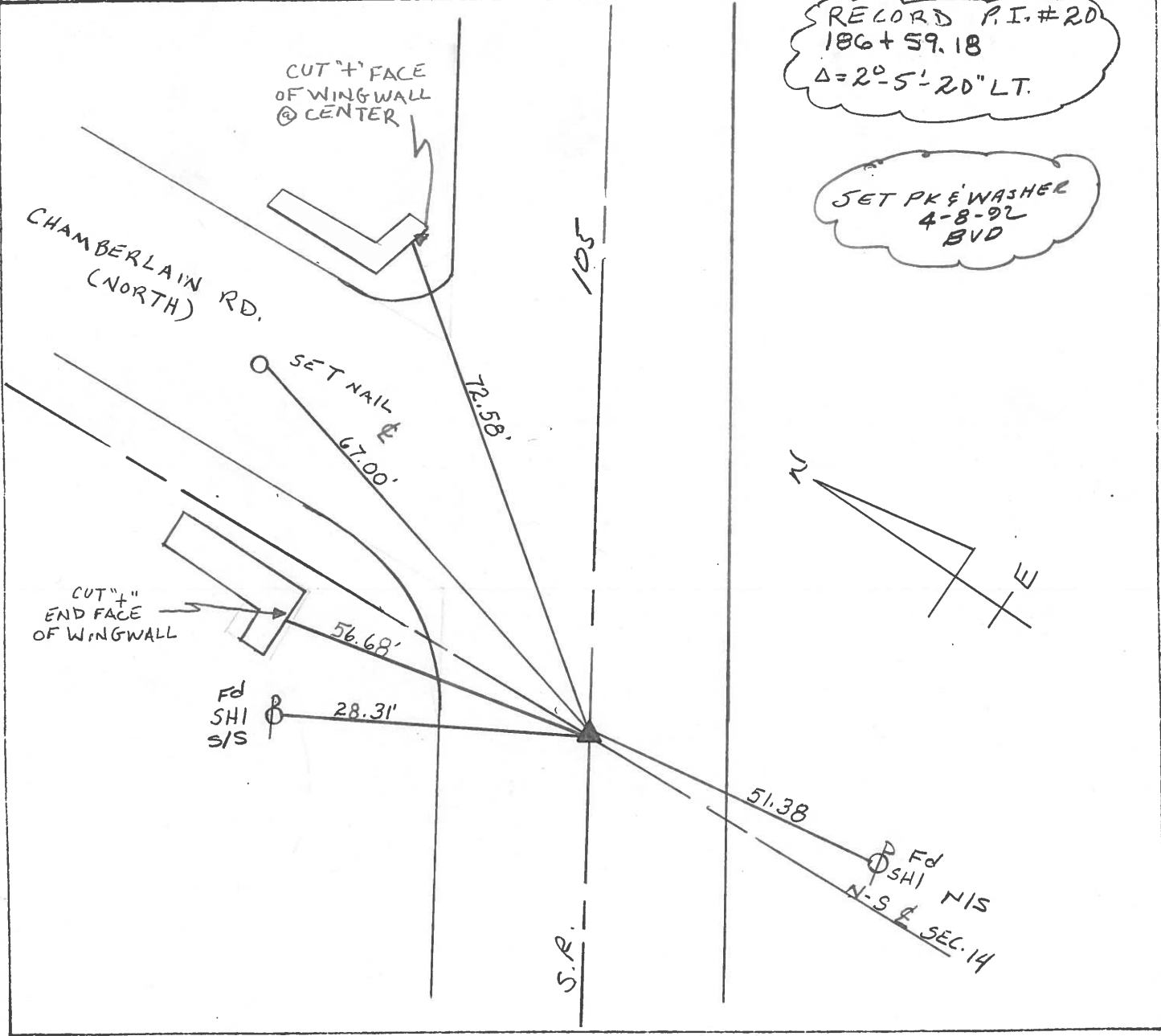
10.0' TO RT EDGE PAVEMENT

S.L.M. 185+64



RECORD P.I. #20
186+59.18
 $\Delta = 2^{\circ} - 5' - 20''$ LT.

SET PK & WASHER
4-8-92
BVD



County WOOD S.R. 105

Date 4-20-82

Township WEBSTER

Weather CLOUDY

Section 14

Temp. +50°

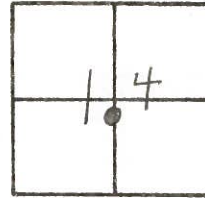
T. N, R. E

Personnel HOFFMAN

HOUSE HOLDER

LOHRKE

22



P.I. #20

186+59.18

A = 2°-5'-20" LT.

SET P.K./WASHER
5-25-82
S.W.H.

CUT "+"
FACE OF
WINGWALL
@ CENTER

CHAMBER LAIN RD
(NORTH)

CUT "+"
END FACE OF
WINGWALL

SHI. 28.33'

20.46' SHI.

51.38 SHI.

N-5 E SEC. 14

FD. 1/2" IRON PIN
@ SURFACE
10.0 - To E. EDGE PAVT.
10.0 - To W. EDGE PAVT.

72.56'

56.67'

PERSONNEL	TITLE	PERSONNEL	TITLE	COUNTY	DATE
Stone	Notes			Wood	22 Sept. 72
Michalak	R			S. R. #105	WEATHER Cool
Danno	H.C.			SEC. 14	TEMP. 65°
Curtis	R.C.				

DESCRIPTION: References to Control Points JOB NO. _____

