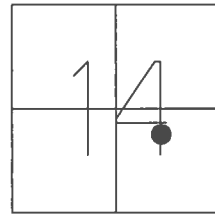


O.D.O.T. DISTRICT 2 SURVEY OFFICE (USE ONLY)

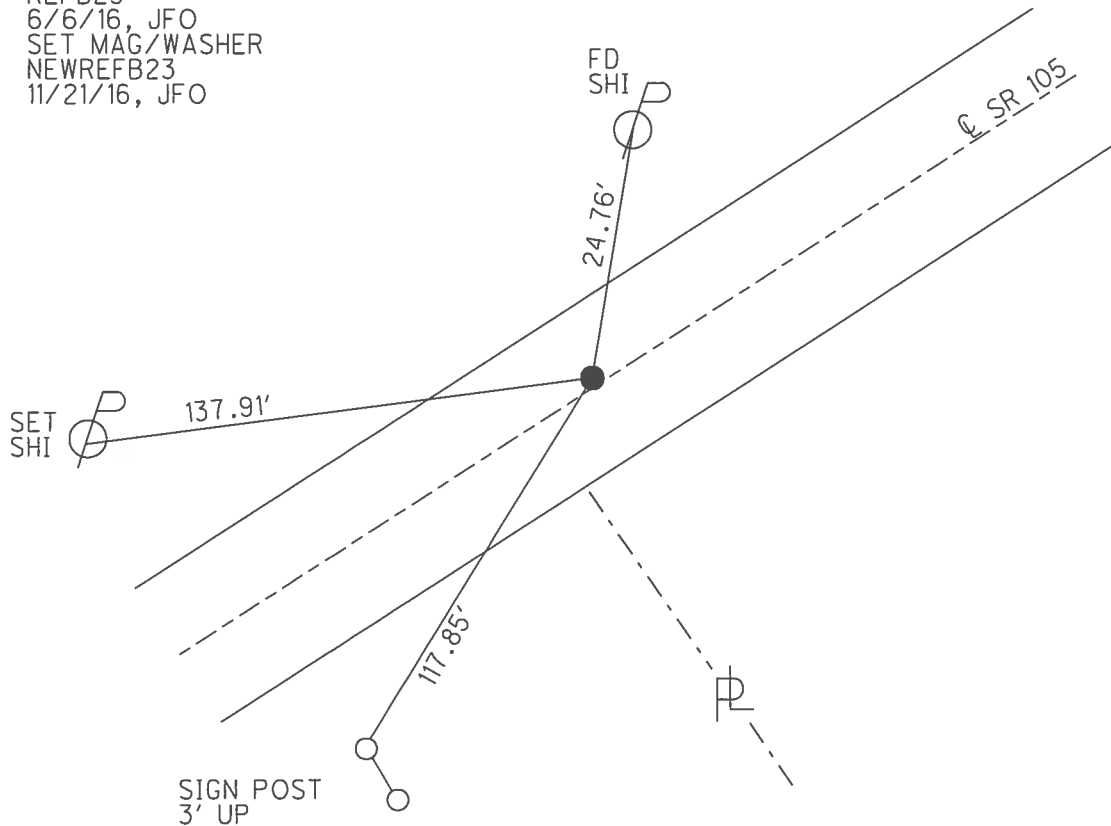
PERSONNEL \_\_\_\_\_ REFERENCE NO. 23 B SHEET 18 OF 54  
 NOTES O'DONNELL DATE 6/6/16 ROUTE SR 105  
 H.C. O'DONNELL WEATHER SUNNY COUNTY WOOD  
 R.C. TODD TEMP. 76° TOWNSHIP WEBSTER  
 SECTION 14  
T 5 N R 11 E

TYPE MONUMENT R.R.SPIKE  
 ON SURFACE - ~~BELOW~~ 6"  
~~LEFT~~ - Q PAV'T - RIGHT 0.8'  
9.4' TO LT EDGE PAVEMENT  
 S.L.M. 198+60



GRID: NORTHING: 630159.975 EASTING: 1678122.283

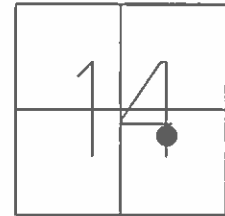
RECORD:  
 FD P.K./WASHER  
 4/15/02, DCH  
 SET P.K./WASHER  
 5/28/02, DCH  
 FD R.R.SPIKE  
 6" DOWN  
 REFB23  
 6/6/16, JFO  
 SET MAG/WASHER  
 NEWREFB23  
 11/21/16, JFO



O.D.O.T. DISTRICT 2 SURVEY OFFICE (USE ONLY)

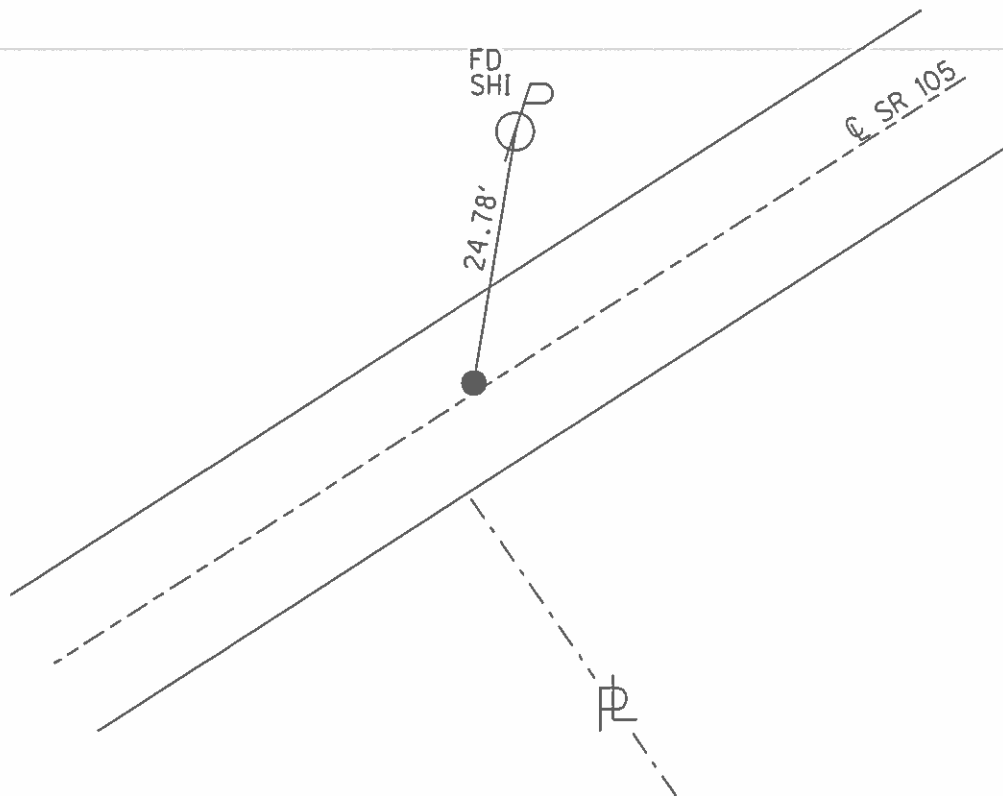
PERSONNEL \_\_\_\_\_ REFERENCE NO. 23A SHEET 18 OF 54  
 NOTES ROUSOS DATE 4/15/02 ROUTE SR 105  
 H.C. HOMAN WEATHER CLOUDY COUNTY WOOD  
 R.C. BROWN TEMP. 50° TOWNSHIP WEBSTER  
 \_\_\_\_\_ SECTION 14  
 \_\_\_\_\_ T 5 N R 11 E

TYPE MONUMENT P.K./WASHER  
 ON SURFACE - ~~BELOW~~ ON \_\_\_\_\_  
 LEFT - ☉ PAV'T - ~~RIGHT~~ 0.8'  
9.4' TO LT EDGE PAVEMENT  
 S.L.M. 198+60



GRID: NORTHING: \_\_\_\_\_ EASTING: \_\_\_\_\_

RECORD:  
 SET P.K./WASHER  
 5/28/02, DCH



# O.D.O.T. DISTRICT 2 SURVEY OFFICE

PERSONNEL

REFERENCE NO. 23A

SHEET 30 OF 57

NOTES LONG

H.C. VAN DUSEN

R.C. BARNHISEL

DATE 8-20-91

WEATHER RAINY

TEMP. 65°

ROUTE 105

COUNTY WOOD

TOWNSHIP WEBSTER

SECTION 14

T. 5 N R. 11 E

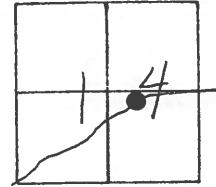
TYPE MONUMENT P.K. / WASHER

ON SURFACE - ~~BELOW~~ YES

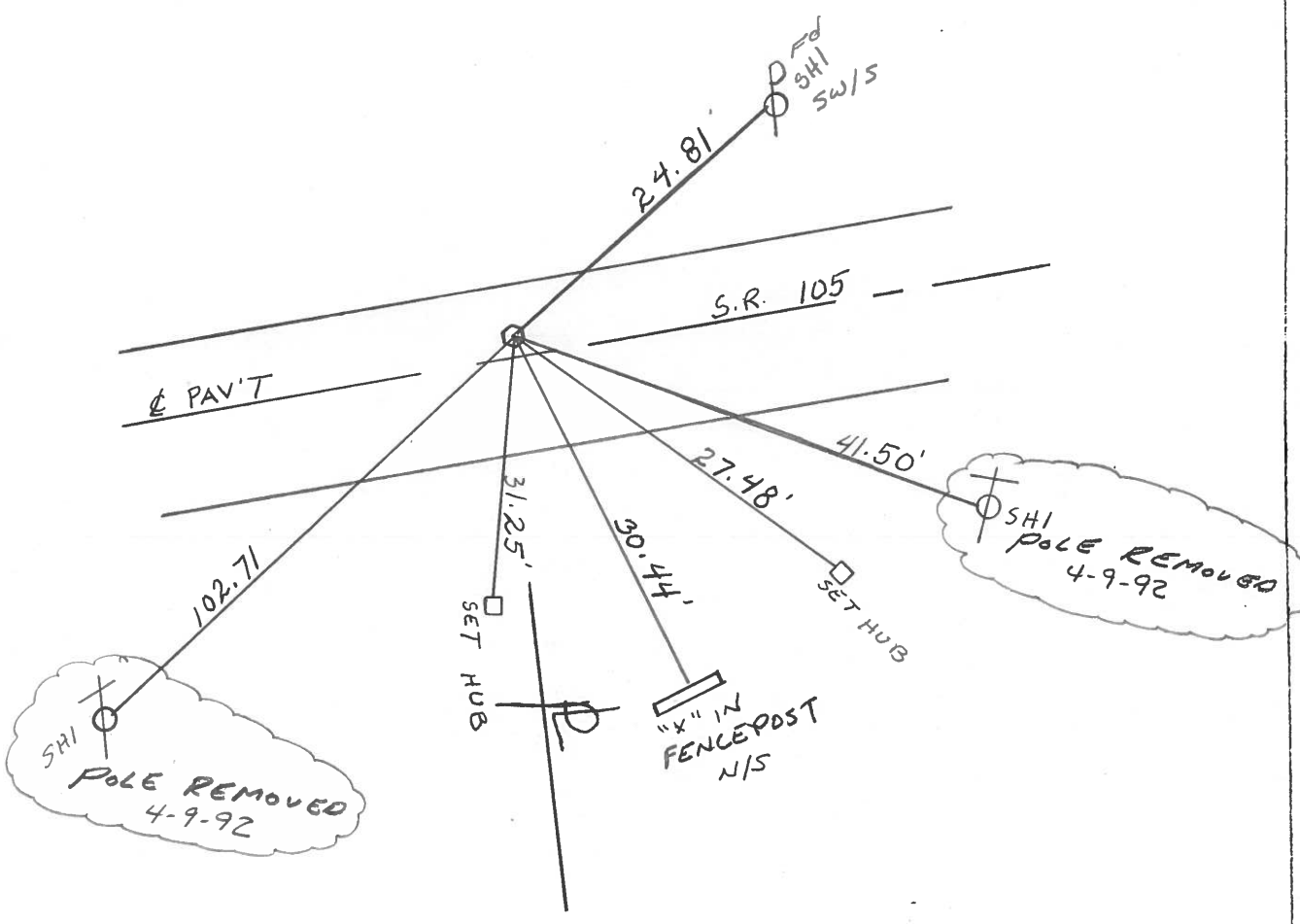
LEFT- & PAV'T. - ~~RIGHT~~ 0.8'

9.4' TO LT EDGE PAVEMENT

S.L.M. 198+60



SET PK & WASHER  
 4-9-92  
 BVD



SH1  
 POLE REMOVED  
 4-9-92

SH1  
 POLE REMOVED  
 4-9-92

County Wood S.R. 105

Date 4-20-82

Township Webster

Weather Rain

Section 14

Temp. +45°

T N, R E

Personnel HOFFMAN

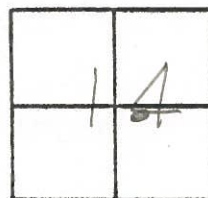
Loehrke

Householder

\_\_\_\_\_

\_\_\_\_\_

#23-A



Fd R.R. SPK/+ @ SURFACE

PROJECT STA ± 198+89

1.0 LT. of & PAUT

9.3 TO N. E.P.

10.3 TO S. E.P.

SET "□" HEAD SPK @ ANGLE OVER SPK.

5-25-82 S.W.H.

