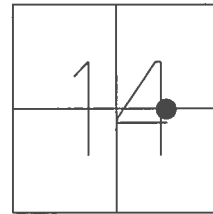


O.D.O.T. DISTRICT 2 SURVEY OFFICE (USE ONLY)

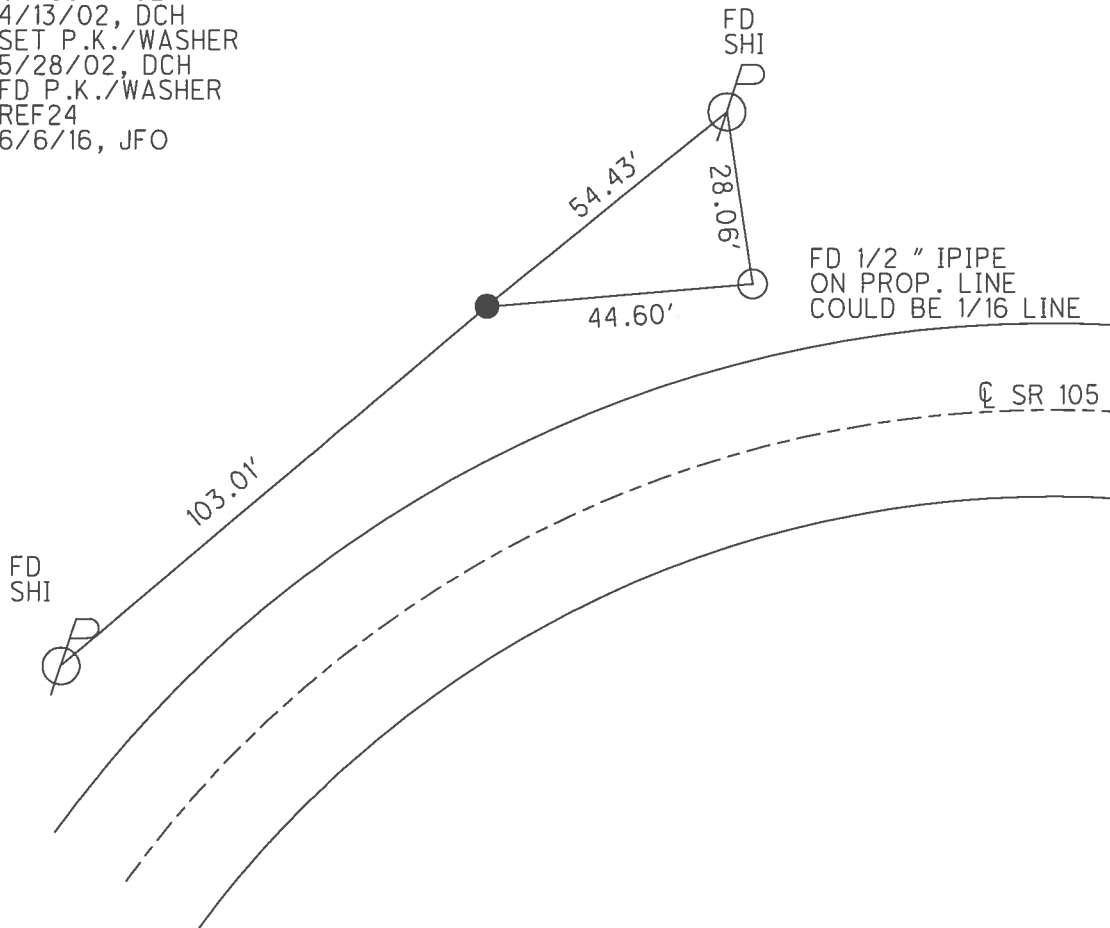
PERSONNEL _____ REFERENCE NO. 24 SHEET 19 OF 54
 NOTES ROUSOS DATE 4/13/02 ROUTE SR 105
 H.C. HOMAN WEATHER SUNNY COUNTY WOOD
 R.C. BROWN TEMP. 52° TOWNSHIP WEBSTER
 SECTION 14
T 5 N R 11 E

TYPE MONUMENT IPIN
 ON SURFACE - ~~BELOW~~ ON
 LEFT - CL PAV'T - ~~RIGHT~~ 23.6'
12.9' TO N EDGE PAVEMENT
 S.L.M. 202+58



GRID: NORTHING: 630415.127 EASTING: 1678474.792

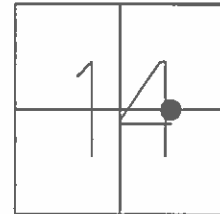
RECORD: P.I.
 STA. 203+55.17
 $\Delta = 41^{\circ}-10'-00''$ RT
 FD IPIN
 ON SURFACE
 4/13/02, DCH
 SET P.K./WASHER
 5/28/02, DCH
 FD P.K./WASHER
 REF24
 6/6/16, JFO



O.D.O.T. DISTRICT 2 SURVEY OFFICE (USE ONLY)

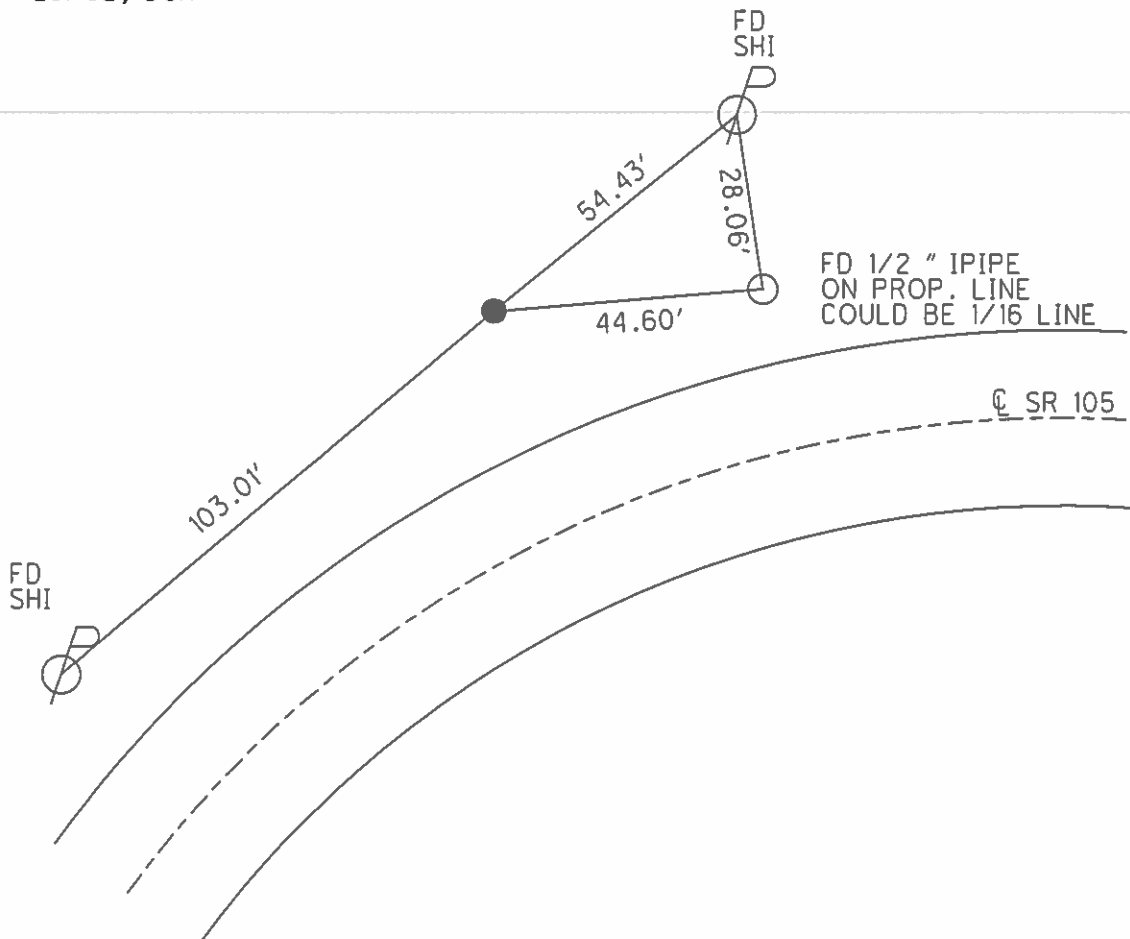
PERSONNEL _____ REFERENCE NO. 24 SHEET 19 OF 54
 NOTES ROUSOS DATE 4/13/02 ROUTE SR 105
 H.C. HOMAN WEATHER SUNNY COUNTY WOOD
 R.C. BROWN TEMP. 52° TOWNSHIP WEBSTER
 SECTION 14
T 5 N R 11 E

TYPE MONUMENT IPIN
 ON SURFACE - ~~BELOW~~ ON _____
 LEFT - ☉ PAV'T - ~~RIGHT~~ 23.6'
12.9' TO N EDGE PAVEMENT
 S.L.M. 202+58



GRID: NORTHING: _____ EASTING: _____

RECORD: P.I.
 STA. 203+55.17
 $\Delta = 41^\circ - 10' - 00''$ RT
 SET P.K./WASHER
 5/28/02, DCH



O.D.O.T. DISTRICT 2 SURVEY OFFICE

PERSONNEL

REFERENCE NO. 24

SHEET 31 OF 57

NOTES LONG

H.C. VANDUSEN

R.C. BARNHISEL

DATE 8-20-91

WEATHER RAINY

TEMP. 65°

ROUTE 105

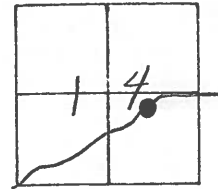
COUNTY WOOD

TOWNSHIP WEBSTER

SECTION 14

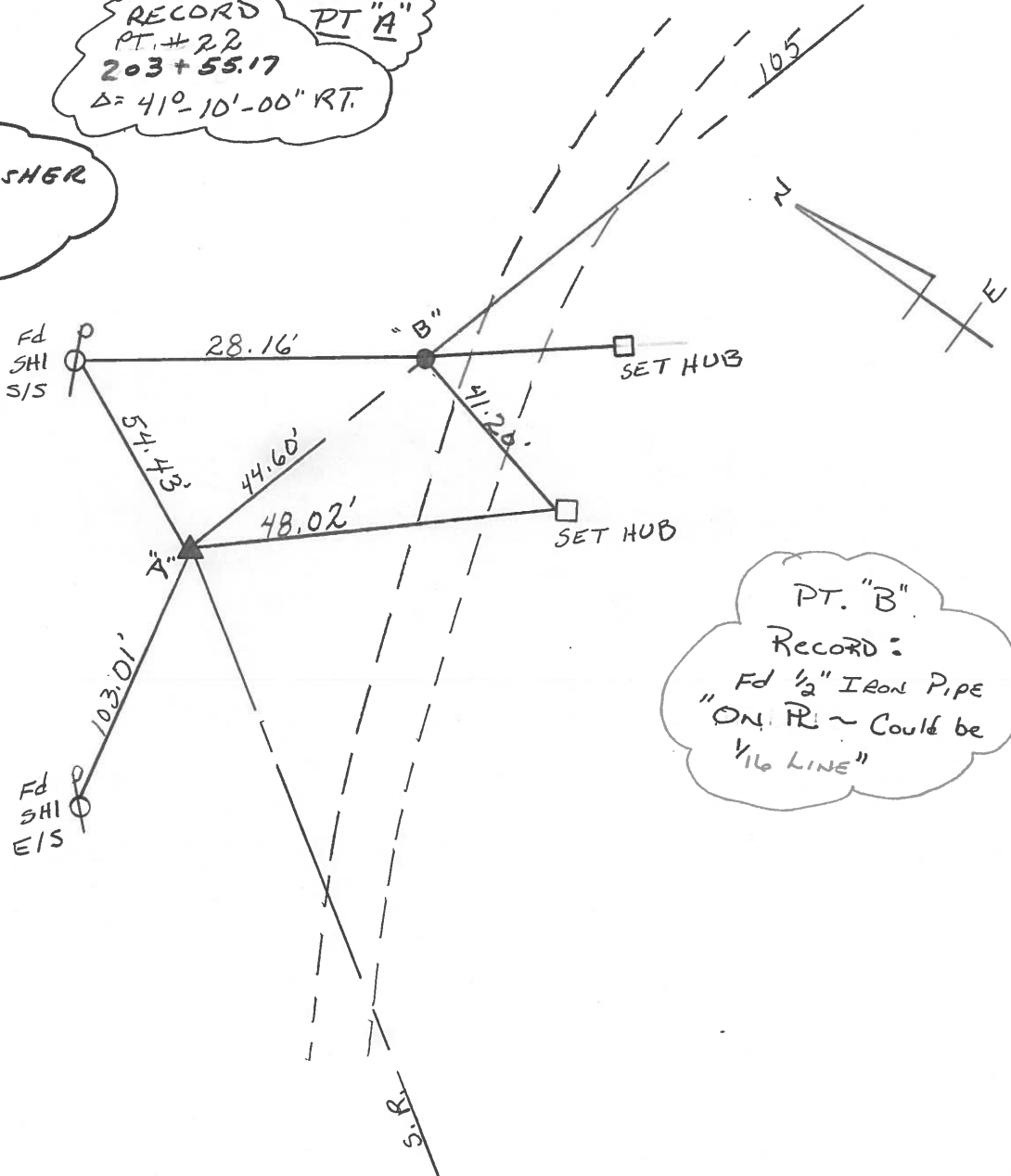
T5 N R 11 E

TYPE MONUMENT P.K. / WASHER "A"
 ON SURFACE - ~~BELOW~~ YES
 LEFT- ☉ PAV'T. - ~~RIGHT~~ 23.6'
12.9 TO N EDGE PAVEMENT
 S.L.M. 202+58



RECORD
 PT. # 22
 203+55.17
 Δ = 41°-10'-00" RT.

SET PK & WASHER
 4-9-92
 BVD



PT. "B"
 Record:
 Fd 1/2" IRON PIPE
 "ON R" ~ Could be
 1/16 LINE"

County WOOD S.R. 105

Township WEBSTER

Section 14

T, N, R, E

Personnel HOFFMAN

HOUSE HOLDER

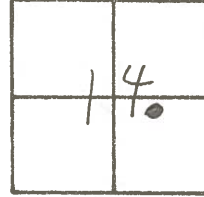
LOEHRKE

Date 4-20-82

Weather L.T. RAIN

Temp. +45°

24

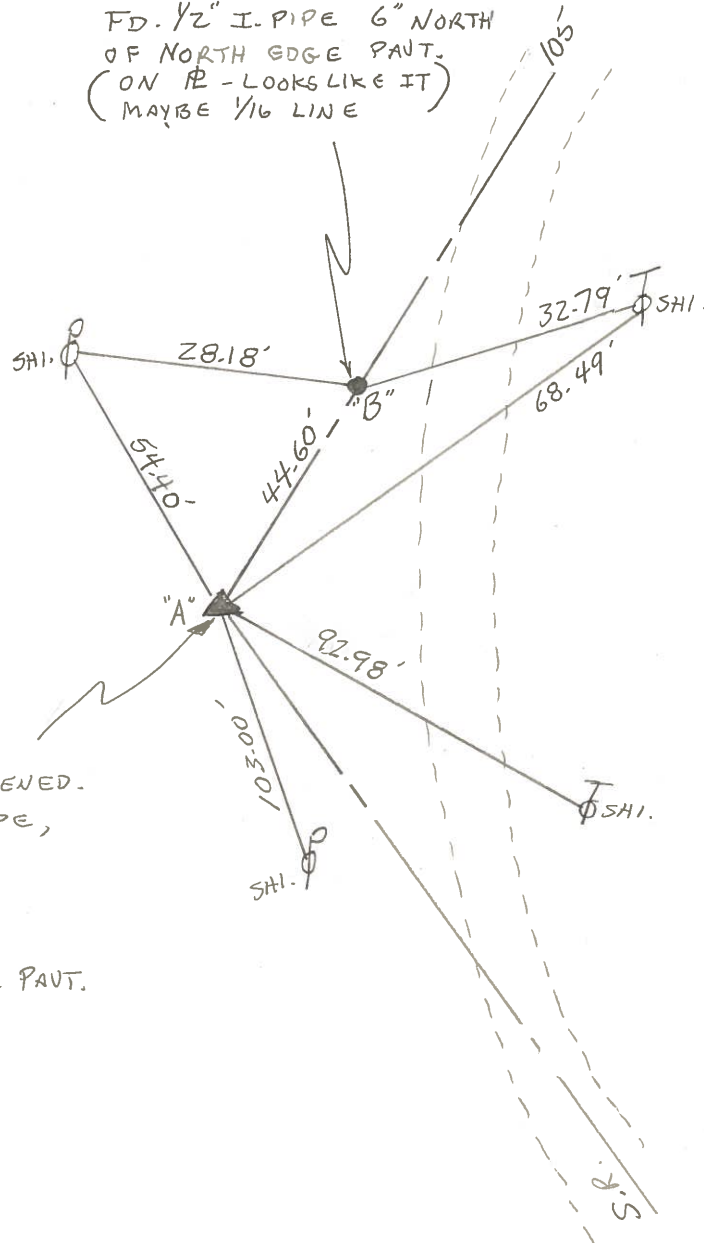


P.I. #22

203+55.17

"A" $\Delta = 41^{\circ}-10'-00"$ RT.

FD. 1/2" I. PIPE 6" NORTH OF NORTH EDGE PAVT. (ON R - LOOKS LIKE IT) MAYBE 1/16 LINE



FD. 1/2" I. PIPE, - BENT
BROKE OFF WHEN STRAIGHTENED.
SET 3/8" BOLT INSIDE PIPE,
0-28' BELOW SURFACE.
SET WITH TIES.

25.3' LEFT OF \perp .

13.2' TO NORTH EDGE PAVT.

PERSONNEL	TITLE	PERSONNEL	TITLE	COUNTY	DATE	WEATHER	TEMP.
Stone				Wood	14 May 73	Cool	50°
Michelak				#105			
Denna				SEC. 14- Webster Twp.			
Curtis							

DESCRIPTION References to Control Points JOB NO. _____

LEFT CENTER LINE RIGHT

COPIED

Ed. 1/2" I. Pipe 6" North of North edge put. (on P/L - looks to be 1/16 inc.) Sta. 203+99.77

Sta. 203+99.77 = P.O.T.

Sta. 203+55.17
PI #22

Set 3/4" I. Rod 2" Below Surface. Sta. 203+55.17
 $\Delta = 41^\circ 10' 00''$ Rt.
13.2' to North edge put.

24

COPIED

Sta. 189+59.36
PI #21

Chamberlain Rd. (S)

Ed. 1/2" I. Pin Sta. 189+59.36
 $\Delta = 0^\circ 36' 40''$ Lt.
9.6' to West edge put.

23