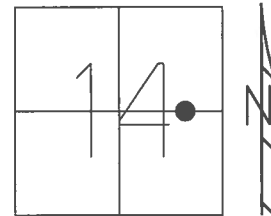


O.D.O.T. DISTRICT 2 SURVEY OFFICE (USE ONLY)

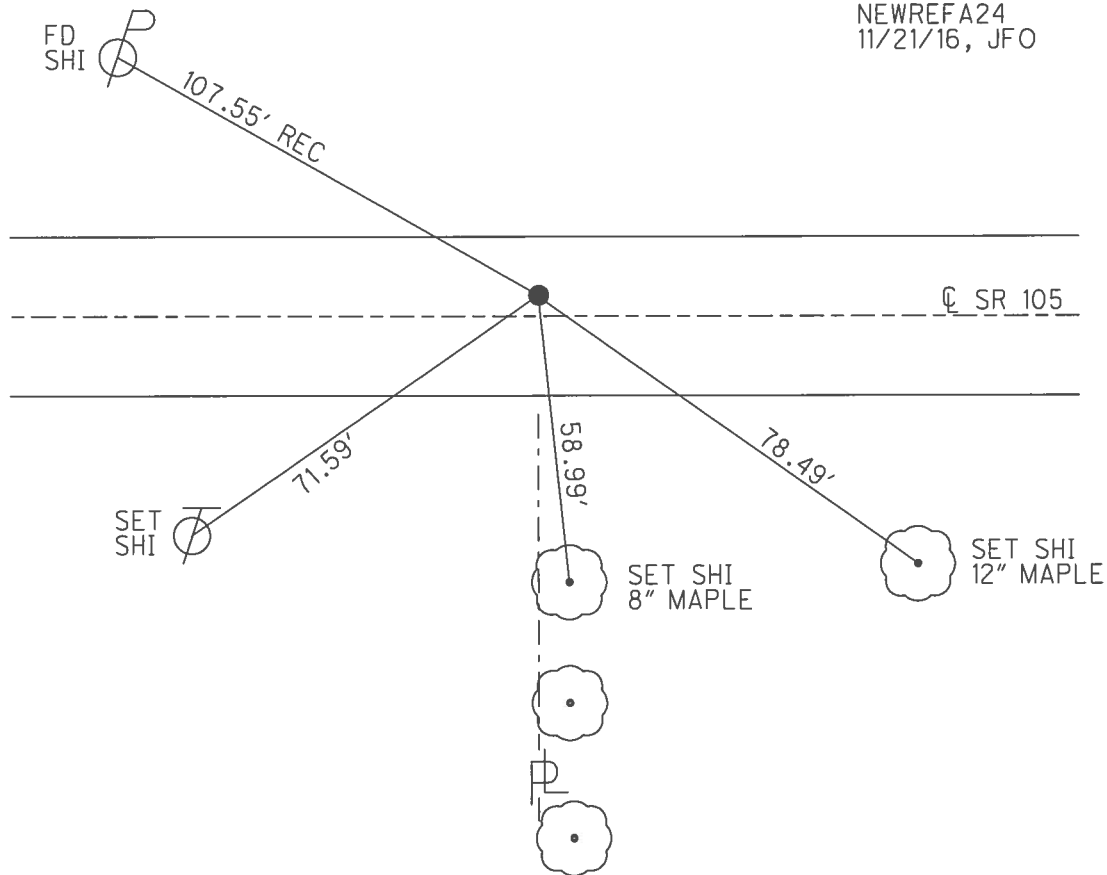
PERSONNEL _____ REFERENCE NO. 24 A SHEET 20 OF 54
 NOTES O'DONNELL DATE 6/6/16 ROUTE SR 105
 H.C. O'DONNELL WEATHER SUNNY COUNTY WOOD
 R.C. TODD TEMP. 80° TOWNSHIP WEBSTER
 SECTION 14
 T 5 N R 11 E

TYPE MONUMENT P.K./WASHER
~~ON SURFACE~~ - BELOW 3"
 LEFT - ☉ PAV'T - ~~RIGHT~~ 2'
8' TO LT EDGE PAVEMENT
 S.L.M. 206+14



GRID: NORTHING: 630406.545 EASTING: 1678795.015

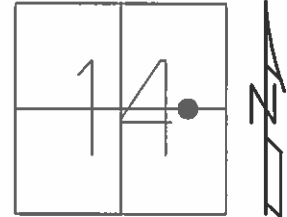
RECORD:
 FD P.K./WASHER
 4/15/02, DCH
 SET P.K./WASHER
 5/28/02, DCH
 FD P.K./WASHER
 REFA24
 6/6/16, JFO
 SET MAG/WASHER
 NEWREFA24
 11/21/16, JFO



O.D.O.T. DISTRICT 2 SURVEY OFFICE (USE ONLY)

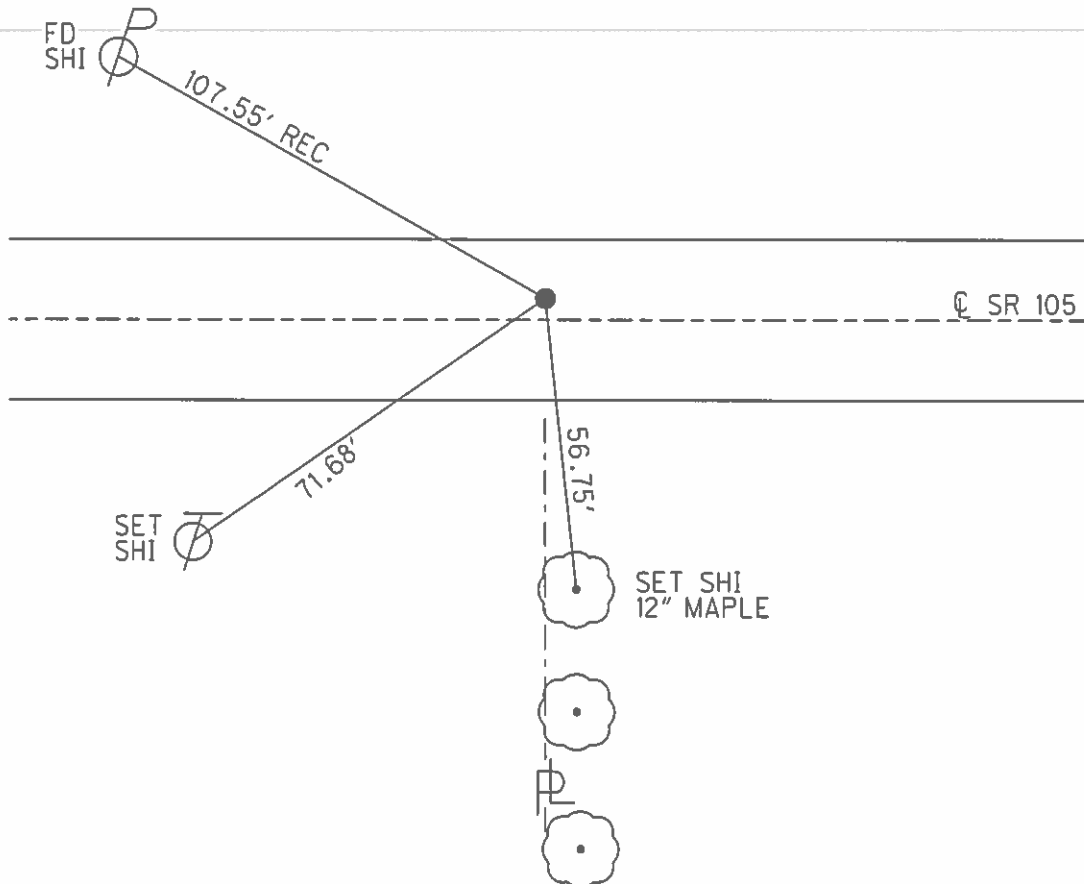
PERSONNEL _____ REFERENCE NO. 24 A SHEET 20 OF 54
 NOTES ROUSOS DATE 4/15/02 ROUTE SR 105
 H.C. HOMAN WEATHER CLOUDY COUNTY WOOD
 R.C. BROWN TEMP. 52° TOWNSHIP WEBSTER
 SECTION 14
 T 5 N R 11 E

TYPE MONUMENT P.K./WASHER
 ON SURFACE - ~~BELOW~~ ON _____
 LEFT - ☉ PAV'T - ~~RIGHT~~ 2'
8' TO LT EDGE PAVEMENT
 S.L.M. 206+14



GRID: NORTHING: _____ EASTING: _____

SET P.K./WASHER
 5/28/02, DCH



O.D.O.T. DISTRICT 2 SURVEY OFFICE

PERSONNEL

REFERENCE NO. 24-A

SHEET 32 OF 57

NOTES LONG

H.C. VAN DUSEN

R.C. BARNHISEL

DATE 8-20-91

WEATHER RAINY

TEMP. 65°

ROUTE 105

COUNTY WOOD

TOWNSHIP WEBSTER

SECTION 14

T 5 N R 11 E

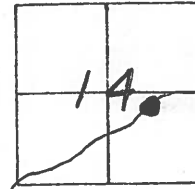
TYPE MONUMENT P.K. / WASHER

ON SURFACE - ~~BELOW~~ YES

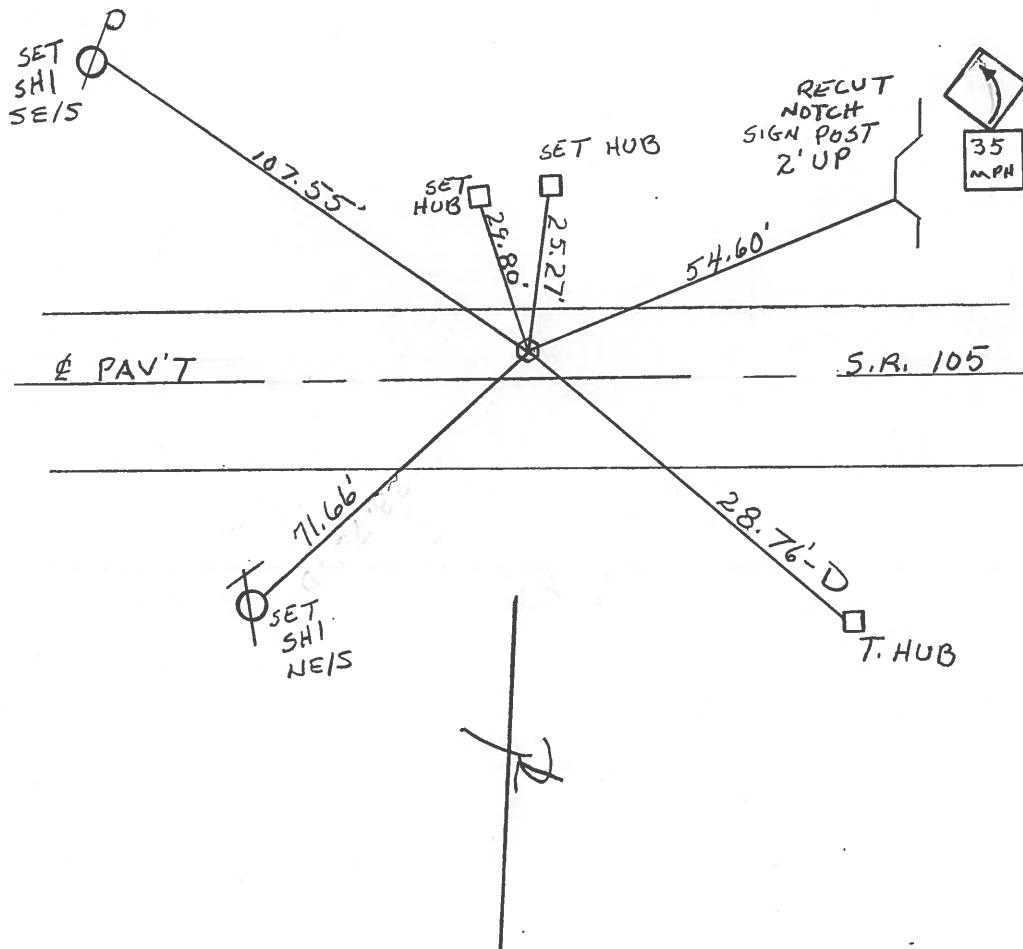
LEFT - 0 PAV'T. - ~~RIGHT~~ 2.0'

8.0' TO LT EDGE PAVEMENT

S.L.M. 206 +14



SET PK & WASHER
 4-9-92
 BVD



County Wood S.R. 105

Township Webster

Section 14

T, N, R, E

Personnel HOFFMAN

Lochke

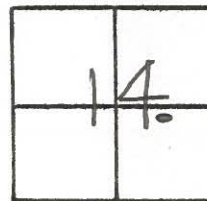
Householder

24-A

Date 4-21-82

Weather Windy - clear

Temp. +40°



Fd R.R. SPIK @ surface
2.4' Lt. of & PAUT.
7.9' To N.E.P.
12.0' To S.E.P.

Prod Sta ± 206 + 41

SET P.K./WASHER
5-24-82 S.W.H

