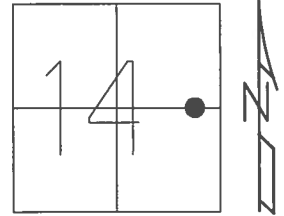


O.D.O.T. DISTRICT 2 SURVEY OFFICE (USE ONLY)

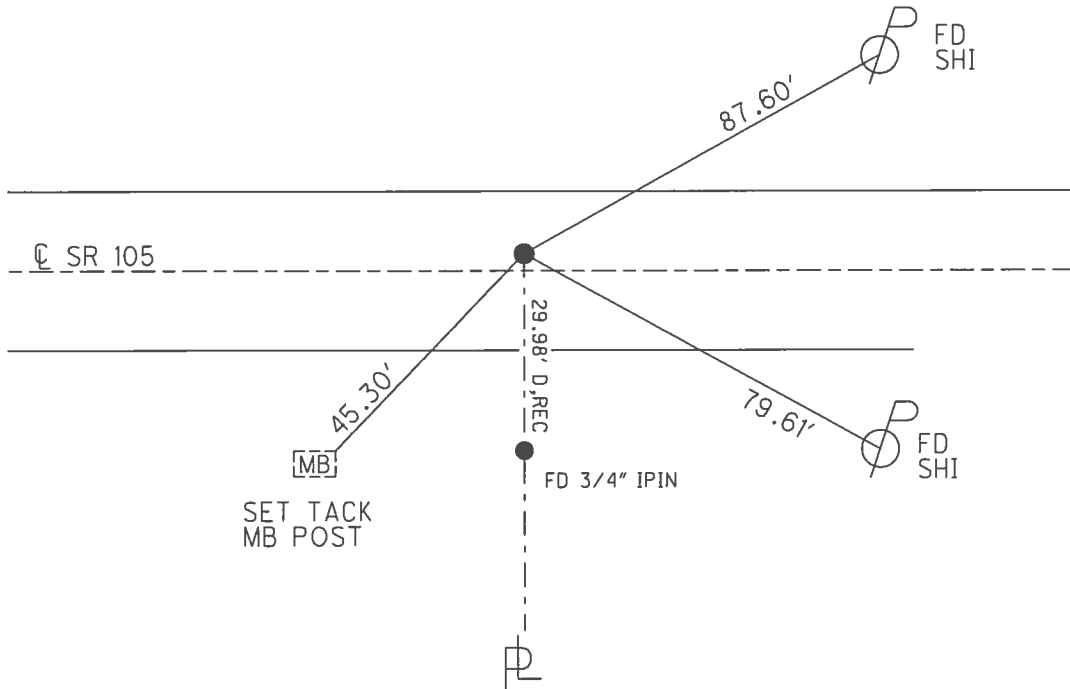
PERSONNEL _____ REFERENCE NO. 24 B SHEET 21 OF 54
 NOTES RHOADES DATE 9/12/16 ROUTE SR 105
 H.C. O'DONNELL WEATHER SUNNY COUNTY WOOD
 R.C. TODD TEMP. 76° TOWNSHIP WEBSTER
 _____ SECTION 14
 _____ T 5 N R 11 E

TYPE MONUMENT P.K./WASHER
 ON SURFACE - ~~BELOW~~ ON _____
 LEFT - ☉ PAV'T - ~~RIGHT~~ 2'
12.2' TO RT EDGE PAVEMENT
 S.L.M. 210+80



GRID: NORTHING: 630395.008 EASTING: 1679259.869

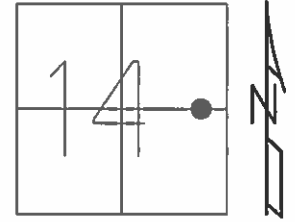
RECORD:
 FD P.K./WASHER
 4/14/02, DCH
 SET P.K./WASHER
 6/13/02, DCH
 FD P.K./WASHER
 REFB24
 6/6/16, JFO
 SET 1" MAG/WASHER
 10/13/17, JFO



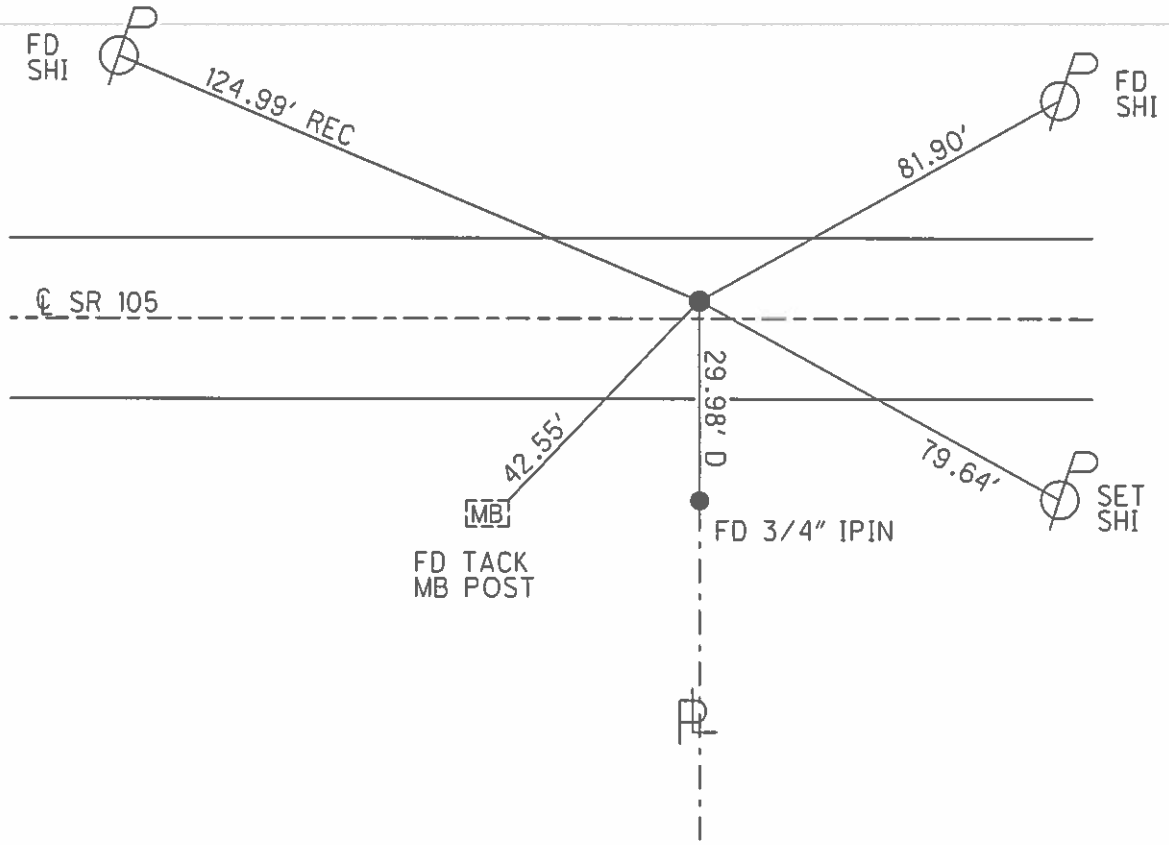
O.D.O.T. DISTRICT 2 SURVEY OFFICE (USE ONLY)

PERSONNEL _____ REFERENCE NO. 24 B SHEET 21 OF 54
 NOTES ROUSOS DATE 4/14/02 ROUTE SR 105
 H.C. HOMAN WEATHER CLOUDY COUNTY WOOD
 R.C. BROWN TEMP. 50° TOWNSHIP WEBSTER
 SECTION 14
T 5 N R 11 E

TYPE MONUMENT P.K./WASHER
 ON SURFACE - ~~BELOW~~ ON
 LEFT - ☉ PAV'T - ~~RIGHT~~ 2'
12.2' TO RT EDGE PAVEMENT
 S.L.M. 210+80
 GRID: NORTHING: _____ EASTING: _____



RECORD:
 SET P.K./WASHER
 6/13/02, DCH



O.D.O.T. DISTRICT 2 SURVEY OFFICE

PERSONNEL

REFERENCE NO. 24-13

SHEET 33 OF 57

NOTES LONG

H.C. VANDUSEN

R.C. BARNHISEL

DATE 8-26-91

WEATHER SUNNY

TEMP. 85°

ROUTE 105

COUNTY WOOD

TOWNSHIP WEBSTER

SECTION 14

T5 N R 11 E

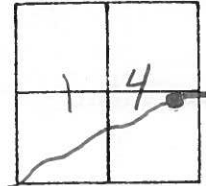
TYPE MONUMENT R.R. SPK.

ON SURFACE - BELOW YES

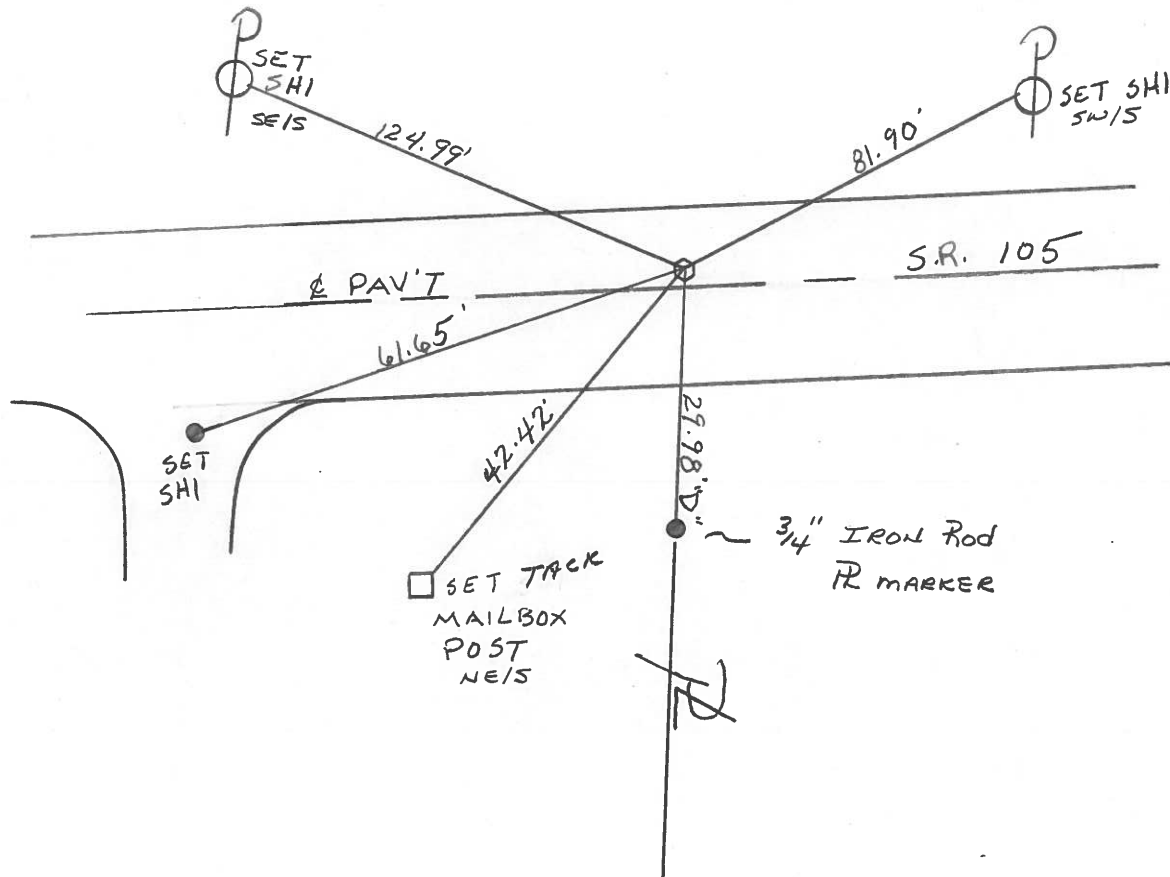
LEFT-℄ PAV'T. - RIGHT 2.0'

12.2' TO RT EDGE PAVEMENT

S.L.M. 210 +80



SET PK & WASHER
 4-9-92
 BVD



County Wood S.R. 105

Date 4-21-82

Township Webster

Weather clear - windy

Section 14

Temp. +40°

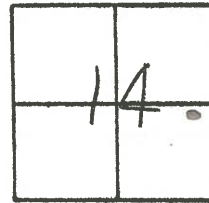
T, N, R, E

Personnel HOFFMAN

Loehrke

Householder

24-B



Fd R.R. SPK @ SURFACE

PROP. STA. ± 211 + 06

1.7' Lt. of & PAUT

8.3' TO N. E.P.

11.6' TO S. E.P.

SET P.K./WASHER
5-25-82 S.W.H.

