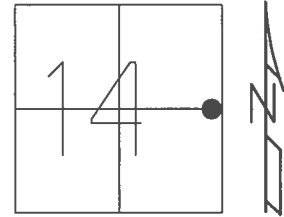


O.D.O.T. DISTRICT 2 SURVEY OFFICE (USE ONLY)

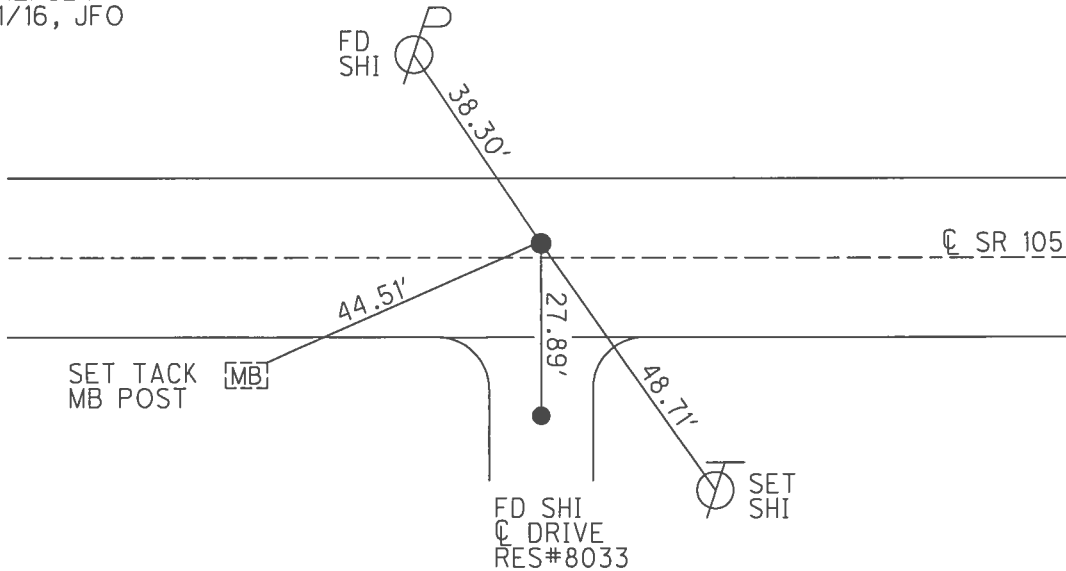
PERSONNEL _____ REFERENCE NO. 24 C SHEET 22 OF 54
 NOTES O'DONNELL DATE 6/9/16 ROUTE SR 105
 H.C. O'DONNELL WEATHER SUNNY COUNTY WOOD
 R.C. TODD TEMP. 60° TOWNSHIP WEBSTER
 _____ SECTION 14
 _____ T 5 N R 11 E

TYPE MONUMENT R.R.SPIKE
~~ON SURFACE~~ - BELOW 6"
 LEFT - ☉ PAV'T - ~~RIGHT~~ 4'
14.4' TO RT EDGE PAVEMENT
 S.L.M. 213+53



GRID: NORTHING: 630388.240 EASTING: 1679534.641

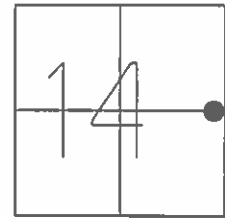
RECORD:
 FD P.K./WASHER
 4/14/02, DCH
 SET P.K./WASHER
 6/13/02, DCH
 FD R.R.SPIKE
 6" DOWN
 REFC24
 6/9/16, JFO
 SET MAG/WASHER
 NEWREFC24
 11/21/16, JFO



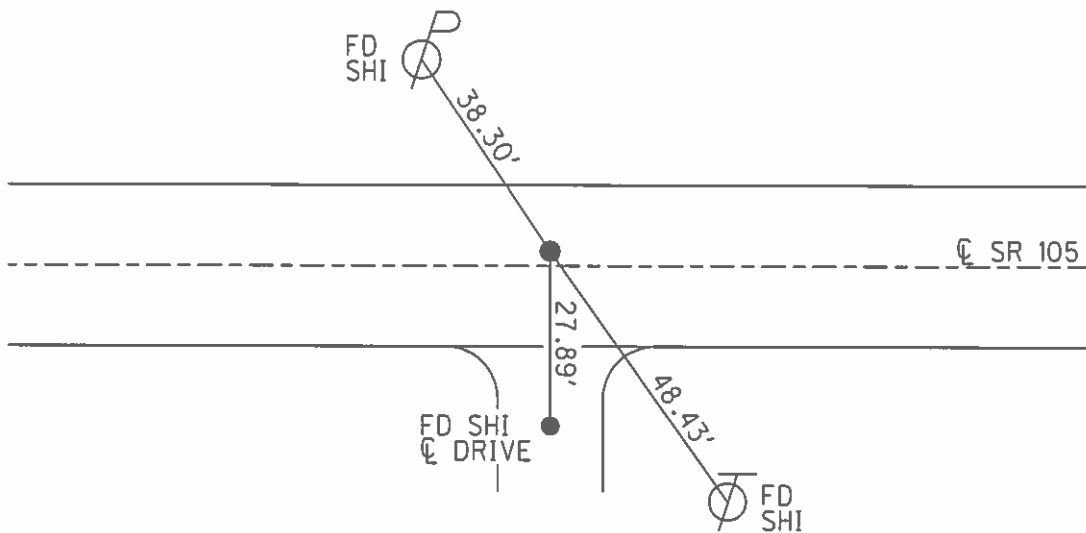
O.D.O.T. DISTRICT 2 SURVEY OFFICE (USE ONLY)

PERSONNEL _____ REFERENCE NO. 24 C SHEET 22 OF 54
 NOTES ROUSOS DATE 4/14/02 ROUTE SR 105
 H.C. HOMAN WEATHER CLOUDY COUNTY WOOD
 R.C. BROWN TEMP. 50° TOWNSHIP WEBSTER
 SECTION 14
 T 5 N R 11 E

TYPE MONUMENT P.K./WASHER
 ON SURFACE - ~~BELOW~~ ON _____
 LEFT - ☐ PAV'T - ~~RIGHT~~ 4'
14.4' TO RT EDGE PAVEMENT
 S.L.M. 213+53
 GRID: NORTHING: _____ EASTING: _____



RECORD:
 SET P.K./WASHER
 6/13/02, DCH



O.D.O.T. DISTRICT 2 SURVEY OFFICE

PERSONNEL _____

REFERENCE NO. 24-C

SHEET 34 OF 57

NOTES LONG

H.C. VANDUSEN

R.C. BARNHISEL

DATE 8-26-91

WEATHER SUNNY

TEMP. 85°

ROUTE 105

COUNTY WOOD

TOWNSHIP WEBSTER

SECTION 14

T5 N R 11 E

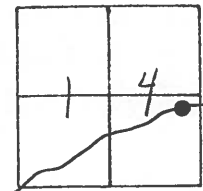
TYPE MONUMENT RR SPK.

ON SURFACE - ~~BELOW~~ YES

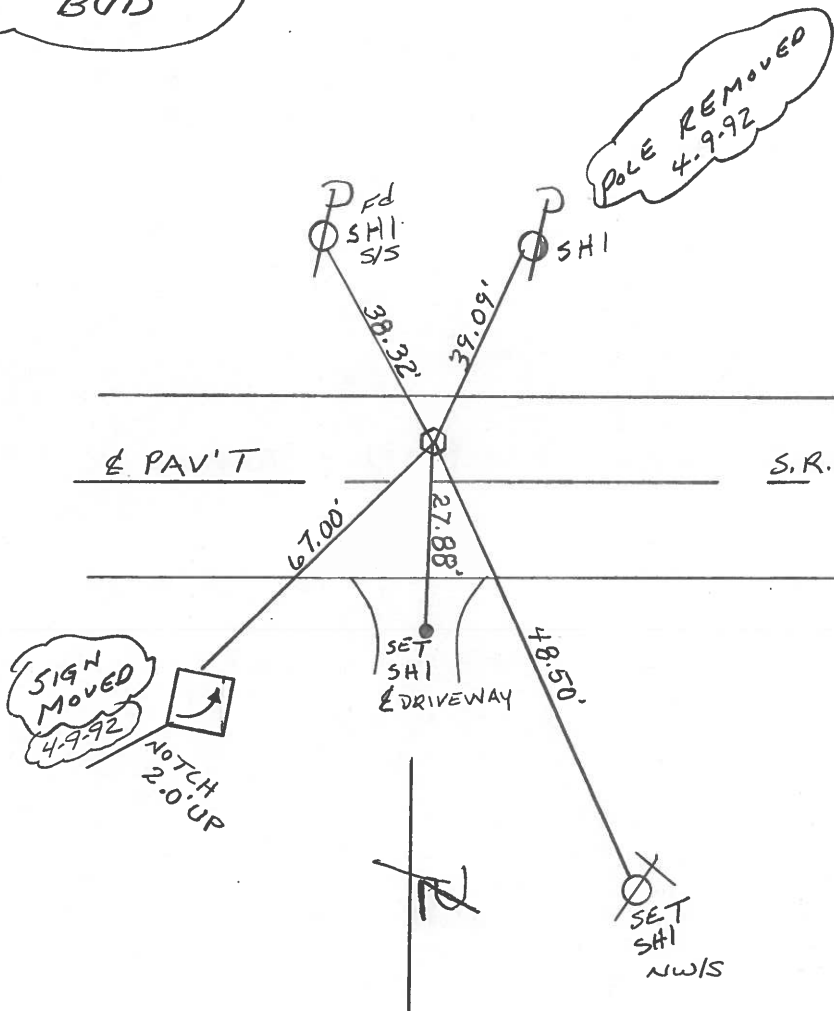
LEFT-~~C~~ PAV'T. - ~~RIGHT~~ 4.0'

14.4' TO RT EDGE PAVEMENT

S.L.M. 213+53



Set P.K. & WASHER
 4-9-92
 BUD



County Wood S.R. 105

Township Webster

Section 14

T N, R E

Personnel Hoffman

Loehrke

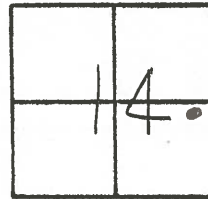
Householder

24-C

Date 4-21-82

Weather clear - windy

Temp. +40°



Fd. R.R. spk @ surface 1/4"

4.0' Lt. of & PAUT

6.5' TO N.E.P.

13.4' TO S.E.P.

Project sta ± 213+80

SET P.K./WASHER

5-25-82 SWH.

