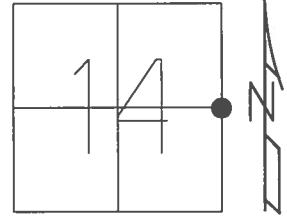


O.D.O.T. DISTRICT 2 SURVEY OFFICE (USE ONLY)

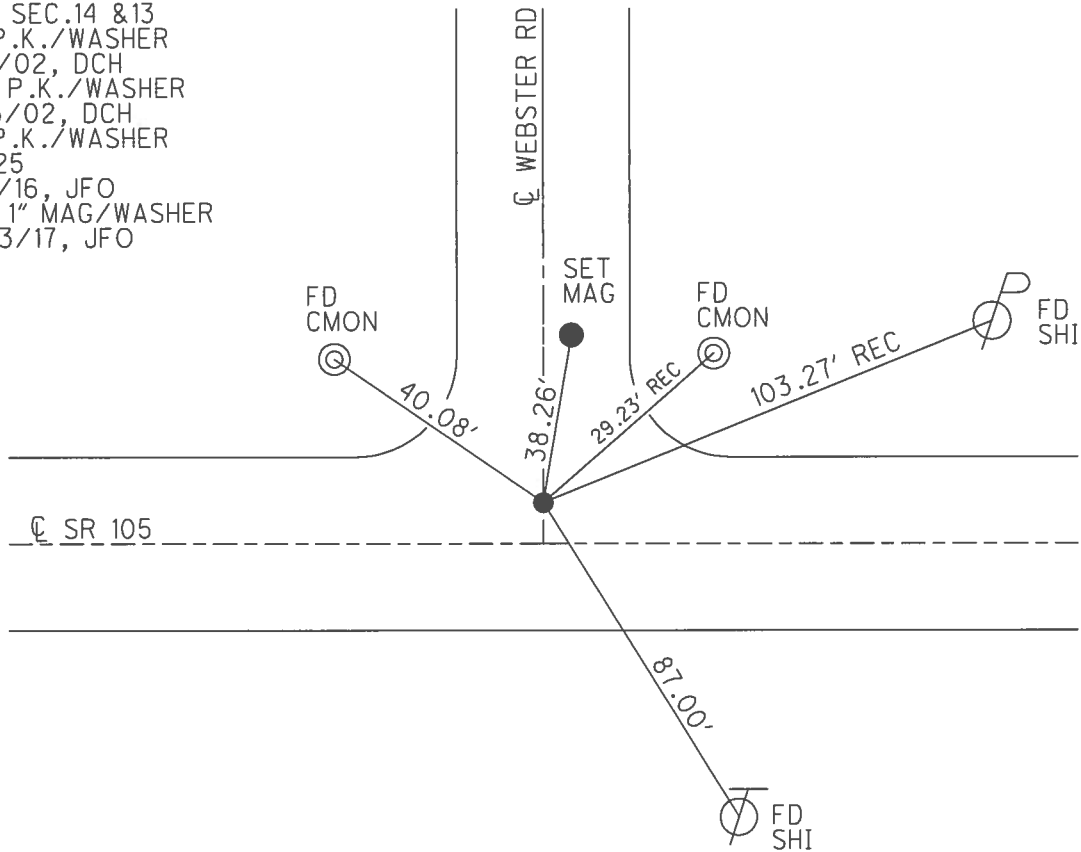
PERSONNEL \_\_\_\_\_ REFERENCE NO. 25 SHEET 23 OF 54  
 NOTES O'DONNELL \_\_\_\_\_ DATE 6/9/16 ROUTE SR 105  
 H.C. O'DONNELL \_\_\_\_\_ WEATHER SUNNY COUNTY WOOD  
 R.C. TODD \_\_\_\_\_ TEMP. 54° TOWNSHIP WEBSTER  
 \_\_\_\_\_ SECTION 14  
 \_\_\_\_\_ T 5 N R 11 E

TYPE MONUMENT MAG/WASHER  
 ON SURFACE - ~~BELOW~~ ON \_\_\_\_\_  
 LEFT - ☑ PAV'T - ~~RIGHT~~ 6.9'  
17' TO RT EDGE PAVEMENT  
 S.L.M. 216+30



GRID: NORTHING: 630381.344 EASTING: 1679809.623

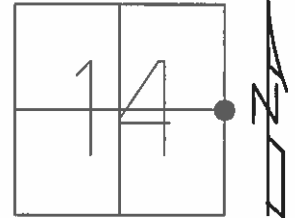
RECORD: P.I.  
 STA. 217+35.19  
 $\Delta = 1^{\circ}-09'-20''$  LT.  
 QUARTER CORNER  
 FOR SEC. 14 & 13  
 FD P.K./WASHER  
 4/6/02, DCH  
 SET P.K./WASHER  
 6/13/02, DCH  
 FD P.K./WASHER  
 REF 25  
 6/9/16, JFO  
 SET 1" MAG/WASHER  
 10/13/17, JFO



**O.D.O.T. DISTRICT 2 SURVEY OFFICE (USE ONLY)**

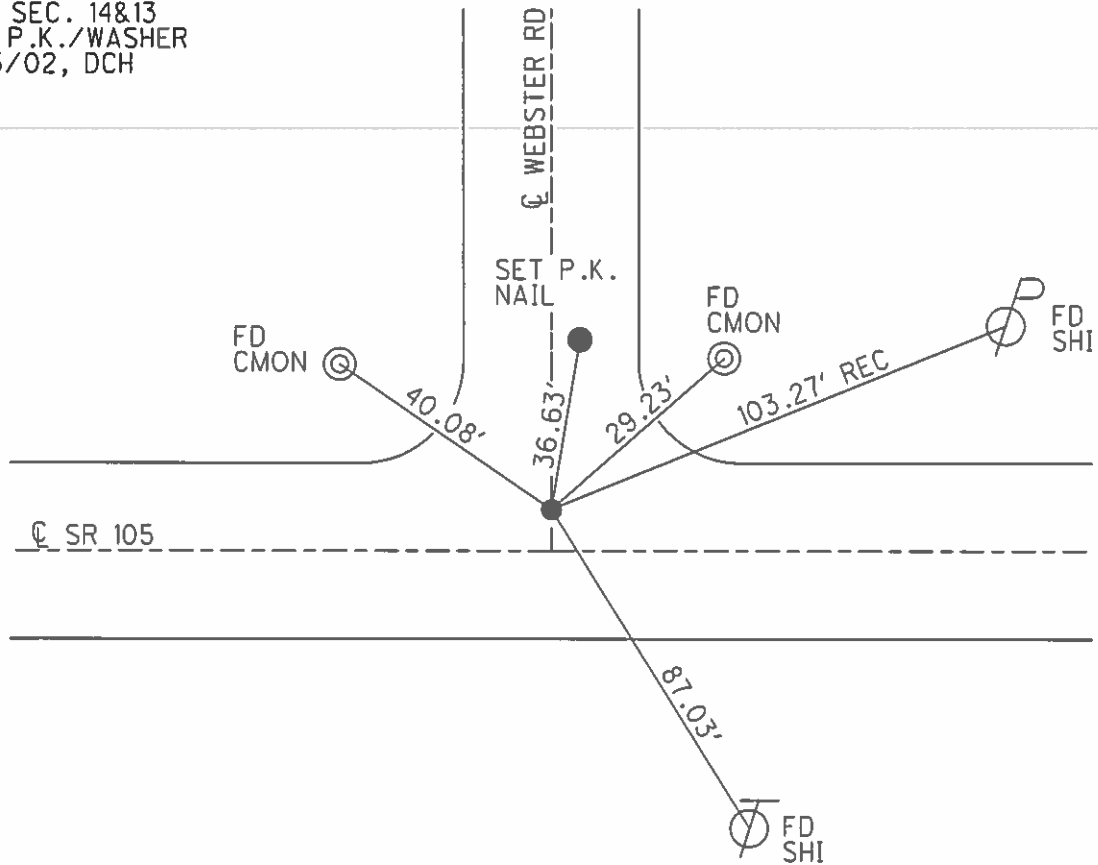
PERSONNEL \_\_\_\_\_ REFERENCE NO. 25 SHEET 23 OF 54  
 NOTES ROUSOS DATE 4/6/02 ROUTE SR 105  
 H.C. HOMAN WEATHER PT CLOUDY COUNTY WOOD  
 R.C. BROWN TEMP. 40° TOWNSHIP WEBSTER  
 \_\_\_\_\_ SECTION 14  
 \_\_\_\_\_ T 5 N R 11 E

TYPE MONUMENT P.K./WASHER  
 ON SURFACE - ~~BELOW~~ ON  
 LEFT - ☉ PAV'T - ~~RIGHT~~ 6.9'  
17' TORT EDGE PAVEMENT  
 S.L.M. 216+30



GRID: NORTHING: \_\_\_\_\_ EASTING: \_\_\_\_\_

RECORD: P.I.  
 STA. 217+35.19  
 $\Delta = 1^{\circ}-09'-20''$  LT.  
 QUARTER CORNER  
 FOR SEC. 14&13  
 SET P.K./WASHER  
 6/13/02, DCH



# O.D.O.T. DISTRICT 2 SURVEY OFFICE

PERSONNEL

REFERENCE NO. 25

SHEET 35 OF 57

NOTES LONG

H.C. VANDUSEN

R.C. BARNHISEL

DATE 8-26-91

WEATHER SUNNY

TEMP. 85°

ROUTE 105

COUNTY WOOD

TOWNSHIP WEBSTER

SECTION 14

T5 N R 11 E

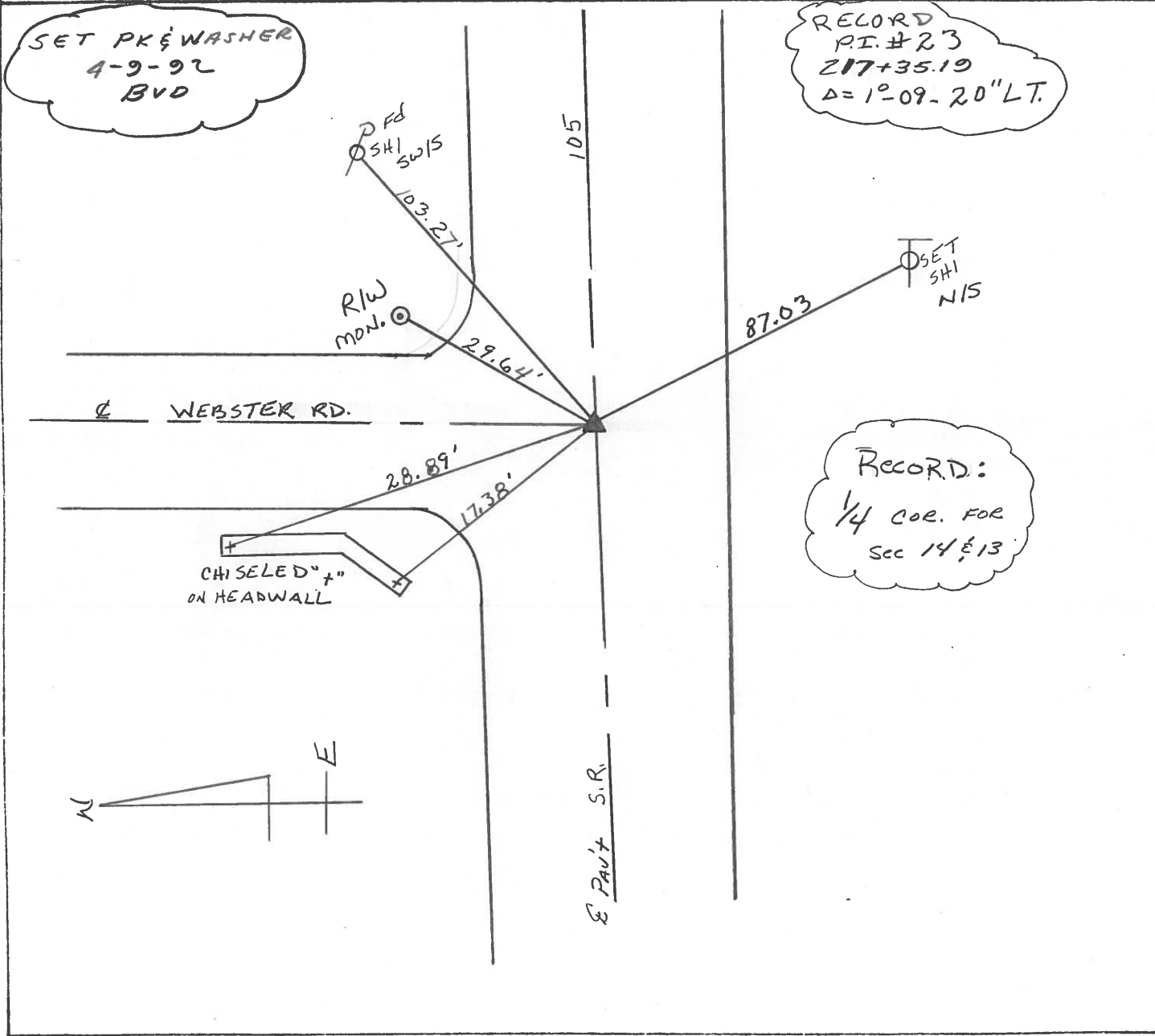
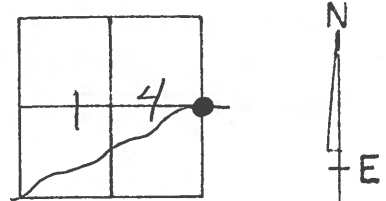
TYPE MONUMENT P.K. / WASHER

ON SURFACE - BELOW - YES

LEFT-☉ PAV'T. - RIGHT 6.9'

17.0' TO RT. EDGE PAVEMENT

S.L.M. 216+30



County WOOD S.R. 105

Date 4-21-82

Township WEBSTER

Weather CLOUDY

Section 13-14

Temp. +40°

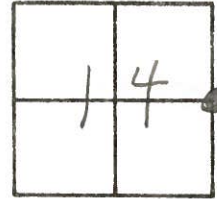
T, N, R, E

Personnel HOFFMAN

HOUSE HOLDER

LOEHRKE

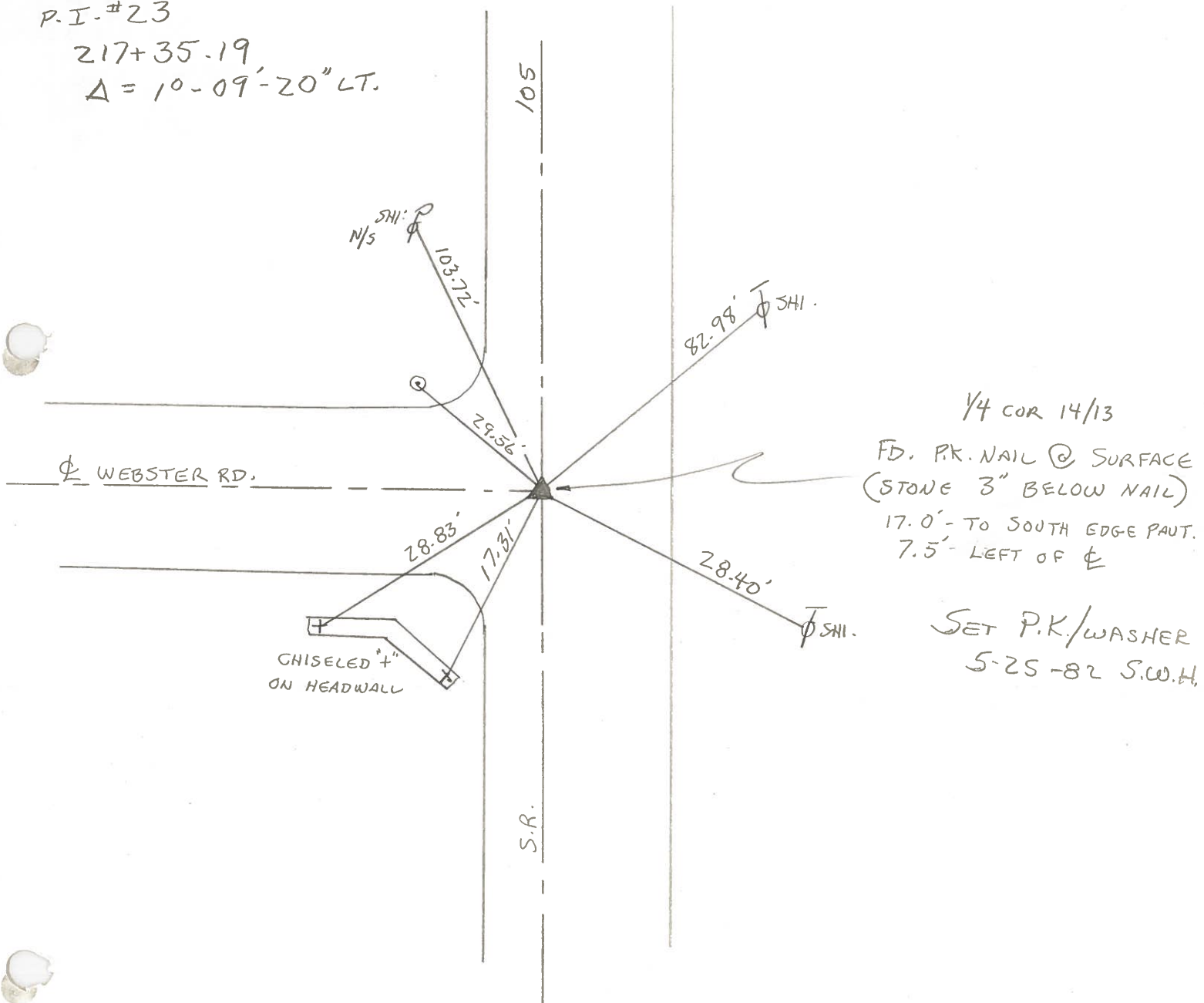
# 25



P.I. #23

217+35.19

$\Delta = 10-09'-20''$  LT.



1/4 COR 14/13  
 FD. PK. NAIL @ SURFACE  
 (STONE 3" BELOW NAIL)  
 17.0' - TO SOUTH EDGE PAINT.  
 7.5' - LEFT OF  $\perp$

SET P.K./WASHER  
 5-25-82 S.W.H.

PERSONNEL TITLE PERSONNEL TITLE

Stone

COUNTY Wood

DATE 15 May 73

Michaelak

S. R. #105

WEATHER Fair

Denno

SEC. 13-14- Webster Twp. TEMP. 55°

Curtis

DESCRIPTION

References to Control Points

JOB NO.

LEFT

CENTER LINE

RIGHT

COPIED

Sta. 218+67.27

PI #24

(Same pole as below)

24

set stake and tack  
Sta. 218+67.27  
 $\Delta = 31^{\circ}42'20''$  Lt.  
4.4' to S. edge pt.



COPIED

Sta. 217+35.19

PI #23

Webster Rd.

chiseled "t" on Hd. wall

25

Fd. Stone 3" Deep  
Sta. 217+35.19  
 $\Delta = 1^{\circ}09'20''$  Lt.  
16.6' to S. edge pt.  
1/4 Cor. 14/13