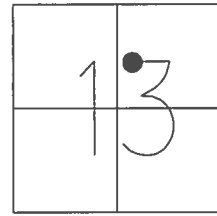


O.D.O.T. DISTRICT 2 SURVEY OFFICE (USE ONLY)

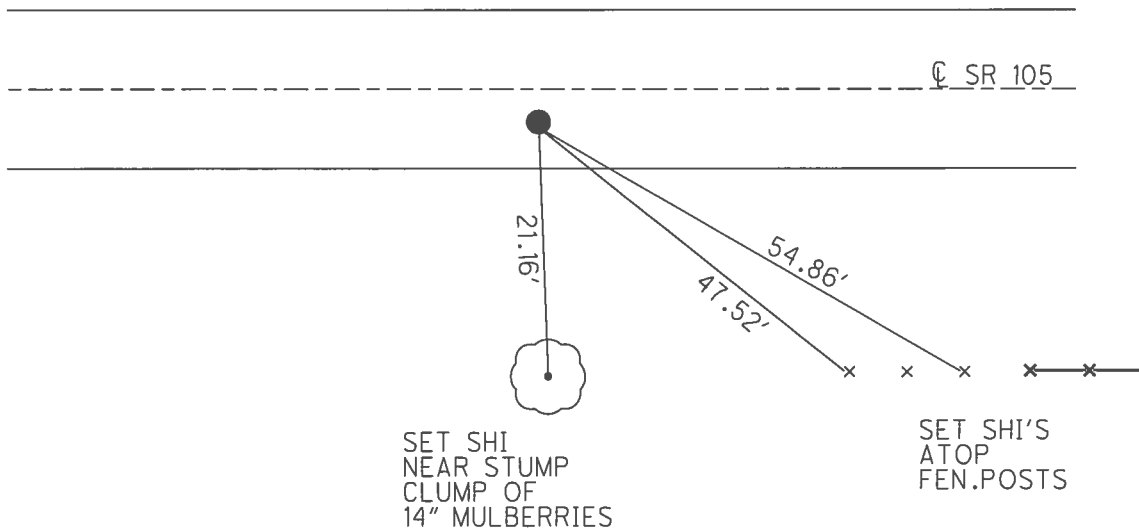
PERSONNEL _____ REFERENCE NO. 34 SHEET 33 OF 54
 NOTES RHOADES DATE 10/17/17 ROUTE SR 105
 H.C. O'DONNELL WEATHER FAIR COUNTY WOOD
 R.C. FARKAS TEMP. 65° TOWNSHIP WEBSTER
 _____ SECTION 13
 _____ T 5 N R 11 E

TYPE MONUMENT 1" MAG/WASHER
 ON SURFACE - ~~BELOW~~ ON
~~LEFT~~ - CL PAV'T - RIGHT 3.5'
3.5' TO S EDGE PAVEMENT
 S.L.M. 249+45



GRID: NORTHING: 631805.487 EASTING: 1682679.045

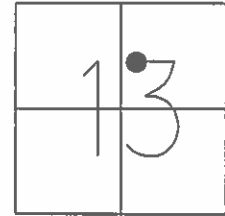
RECORD: P.I.
 STA. 250+61.50
 $\Delta = 12^\circ-51'-20''$ LT
 FD P.K./WASHER
 4/14/02, DCH
 SET P.K./WASHER
 5/31/02, DCH
 FD MAG/WASHER
 REF34
 6/9/16, JFO
 SET 1" MAG/WASHER
 10/17/17, JFO



O.D.O.T. DISTRICT 2 SURVEY OFFICE (USE ONLY)

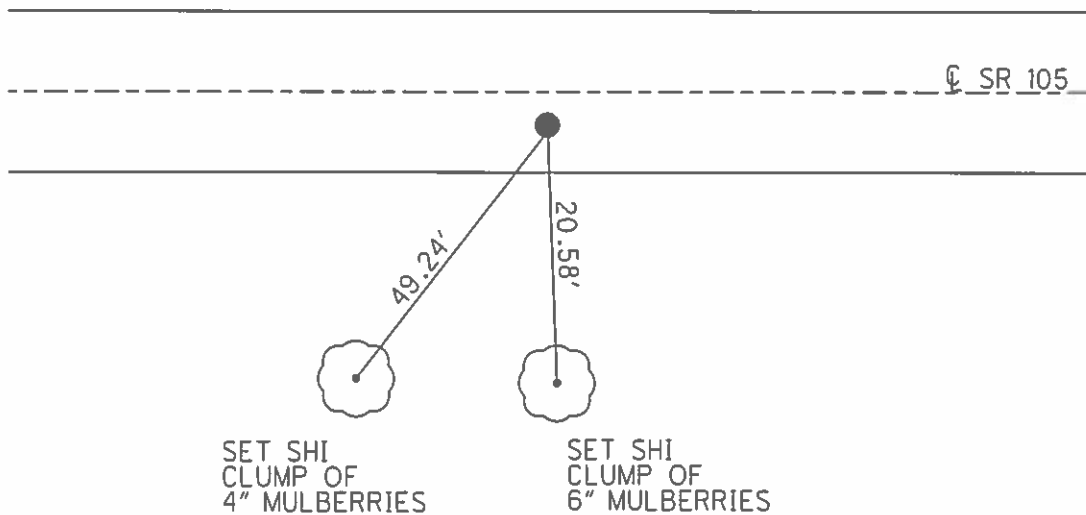
PERSONNEL _____ REFERENCE NO. 34 SHEET 33 OF 54
 NOTES ROUSOS DATE 4/14/02 ROUTE SR 105
 H.C. HOMAN WEATHER CLEAR COUNTY WOOD
 R.C. ROUSOS TEMP. 58° TOWNSHIP WEBSTER
 _____ SECTION 13
 _____ T 5 N R 11 E

TYPE MONUMENT P.K./WASHER
 ON SURFACE - ~~BELOW~~ ON
~~LEFT~~ - CL PAV'T - RIGHT 3.5'
3.5' TO S EDGE PAVEMENT
 S.L.M. 249+45



GRID: NORTHING: _____ EASTING: _____

RECORD: P.I.
 STA. 250+61.50
 $\Delta = 12^\circ - 51' - 20''$ LT
 SET P.K./WASHER
 5/31/02, DCH



O.D.O.T. DISTRICT 2 SURVEY OFFICE

PERSONNEL _____

REFERENCE NO. 34

SHEET 44 OF 57

NOTES LONG

H.C. VANDUSEN

R.C. BARNHISEL

DATE 8-26-91

WEATHER SUNNY

TEMP. 90°

ROUTE 105

COUNTY WOOD

TOWNSHIP WEBSTER

SECTION 13

T 5 N R 11 E

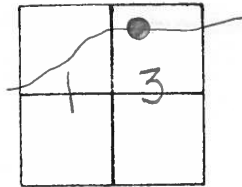
TYPE MONUMENT P.K. / WASHER

ON SURFACE - ~~BELOW~~ YES

~~LEFT~~ - C PAV'T. - RIGHT 3.5'

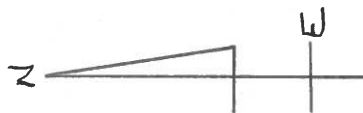
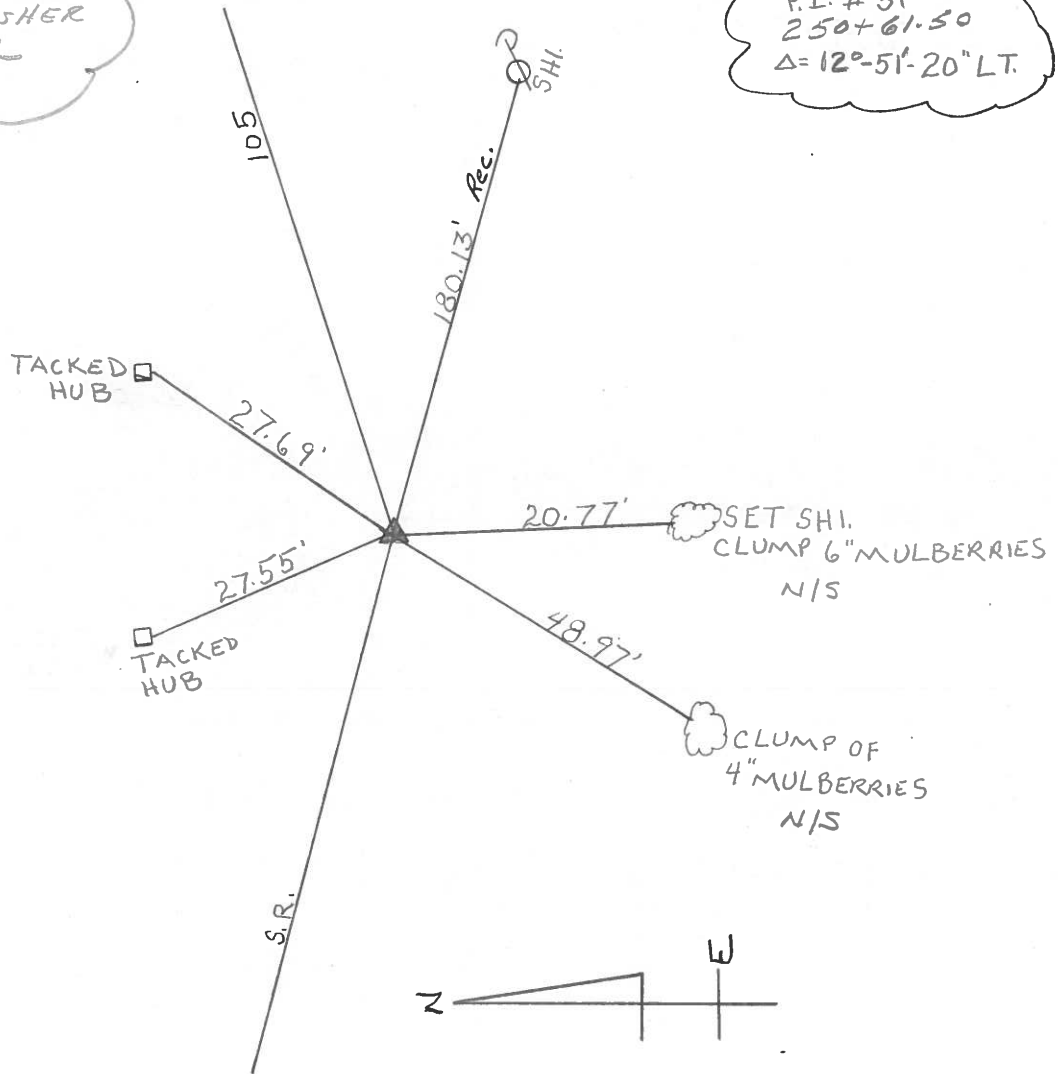
3.5' TO S EDGE PAVEMENT

S.L.M. 249+45



SET PK & WASHER
 4-9-92
 BVO

RECORD
 P.I. #31
 250+61.50
 $\Delta = 12^{\circ} 51' 20''$ LT.



County WOOD S.R. 105

Township WEBSTER

Section 13

T.N, R.E

Personnel HOFFMAN

HOUSEHOLDER

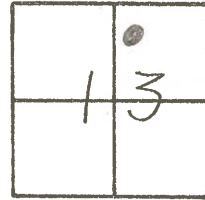
LOEHRKE

34

Date 4-21-82

Weather CLEAR

Temp. +45°

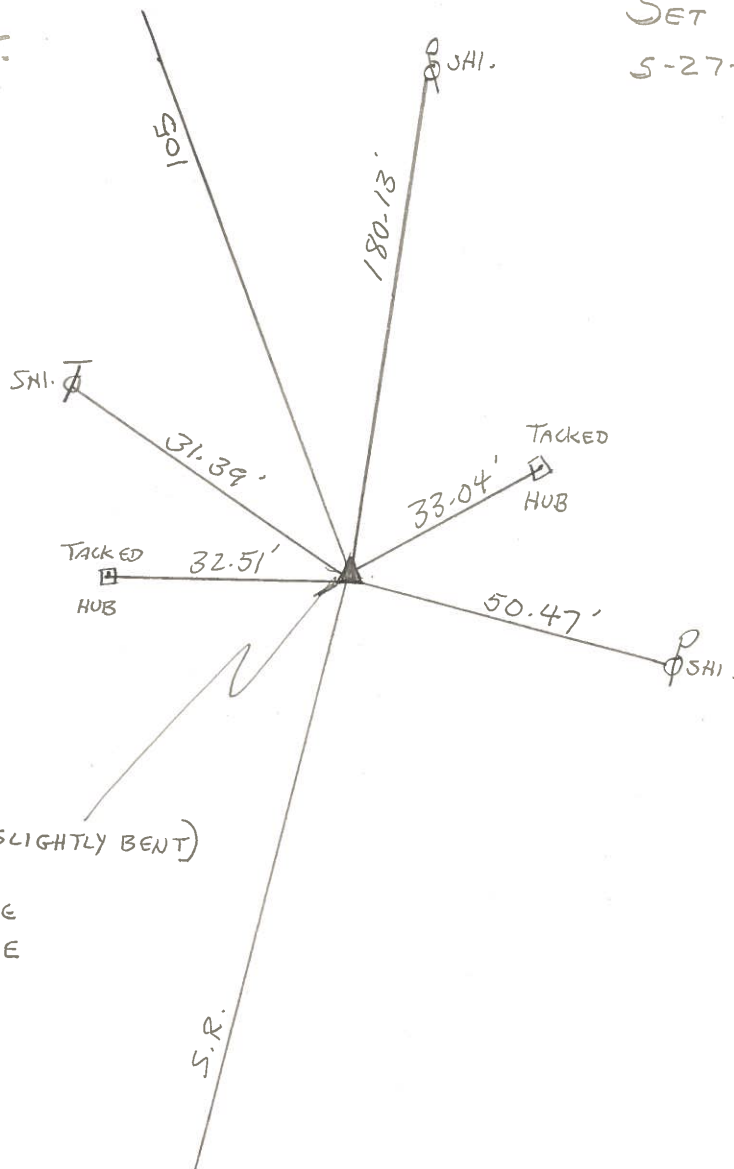


P.I. #31

250+ 61.50

$\Delta = 12^{\circ}-51'-20''$ LT.

SET P.K./WASHER
5-27-82 S.W.H.



FD. BOAT SPR. (SLIGHTLY BENT)

@ SURFACE

14.7' - TO N. EDGE

5.8' - TO S. EDGE

4.7' - RT. OF ϕ