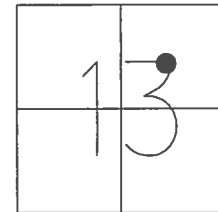


O.D.O.T. DISTRICT 2 SURVEY OFFICE (USE ONLY)

PERSONNEL _____ REFERENCE NO. 35 A SHEET 35 OF 54
 NOTES RHOADES DATE 9/13/16 ROUTE SR 105
 H.C. O'DONNELL WEATHER SUNNY COUNTY WOOD
 R.C. TODD TEMP. 58° TOWNSHIP WEBSTER
 SECTION 13
 T 5 N R 11 E

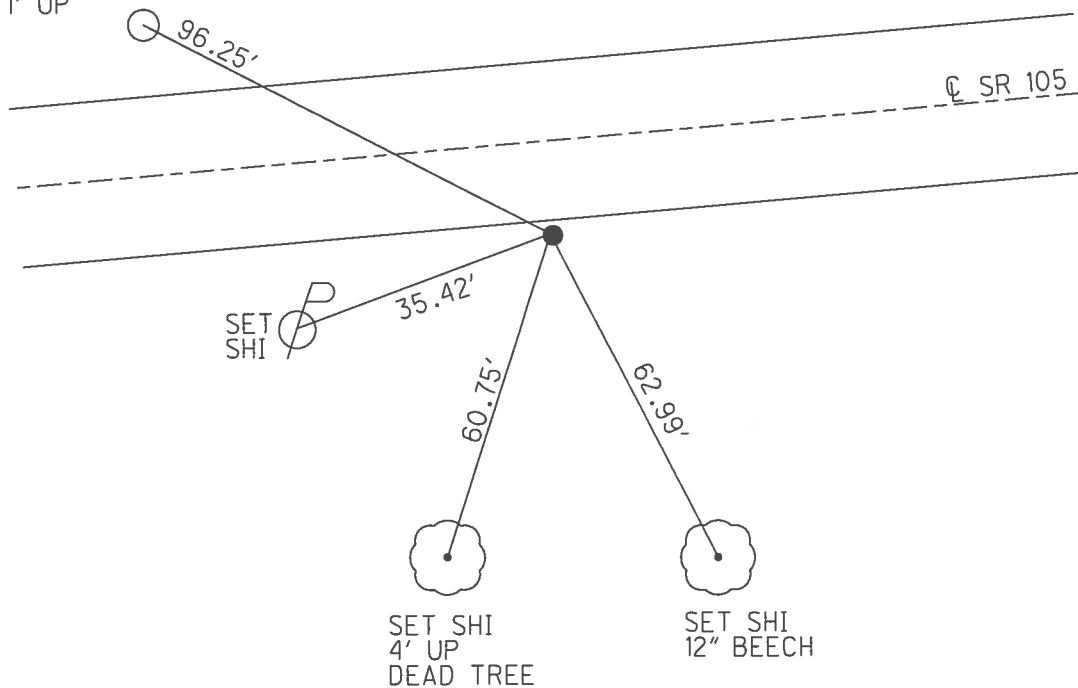
TYPE MONUMENT P.K./WASHER
 ON SURFACE - ~~BELOW~~ ON _____
~~LEFT~~ - Q PAV'T - RIGHT 11.2'
 ON TO S EDGE PAVEMENT
 S.L.M. 255+69



GRID: NORTHING: 631780.034 EASTING: 1683302.154

RECORD:
 ORIGIN UNKNOWN
 FD P.K./WASHER
 4/15/02, DCH
 SET P.K./WASHER
 5/28/02, DCH
 FD P.K./WASHER
 REFA35
 6/10/16, JFO
 SET 1" MAG/WASHER
 10/17/17, JFO

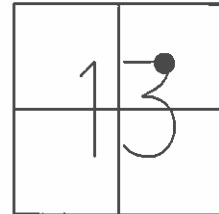
STEEL PIPE
 FD NOTCH NEAR/S
 4" PIPE CASTING
 1' UP



O.D.O.T. DISTRICT 2 SURVEY OFFICE (USE ONLY)

PERSONNEL _____ REFERENCE NO. 35 A SHEET 35 OF 54
NOTES ROUSOS DATE 4/15/02 ROUTE SR 105
H.C. HOMAN WEATHER PT SUNNY COUNTY WOOD
R.C. BROWN TEMP. 60° TOWNSHIP WEBSTER
SECTION 13
T 5 N R 11 E

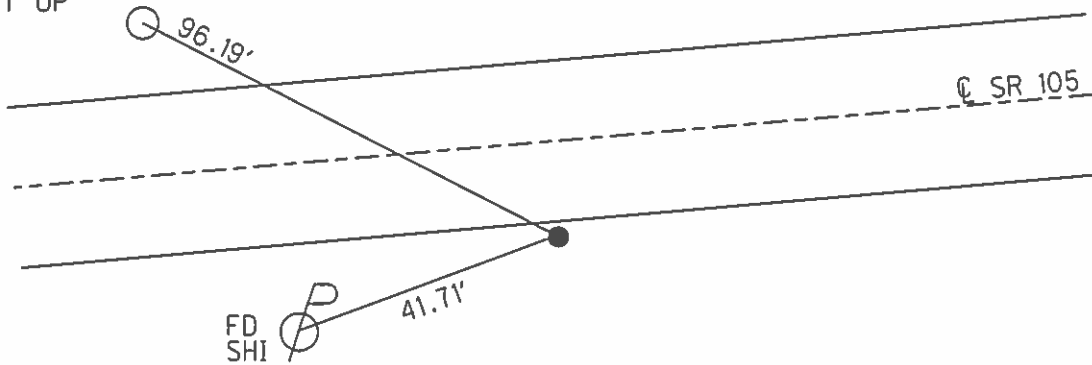
TYPE MONUMENT P.K./WASHER
ON SURFACE - ~~BELOW~~ ON _____
~~LEFT~~ - Q PAV'T - RIGHT 11.2'
0.2' TO S EDGE PAVEMENT
S.L.M. 255+69



GRID: NORTHING: _____ EASTING: _____

RECORD:
ORIGIN UNKNOWN
SET P.K./WASHER
5/28/02, DCH

STEEL PIPE
NOTCH NEAR SIDE
4" PIPE CASTING
1' UP



O.D.O.T. DISTRICT 2 SURVEY OFFICE

PERSONNEL

REFERENCE NO. 35A

SHEET 46 OF 57

NOTES LONG

H.C. VANDUSEN

R.C. BARWISSEL

DATE 8-26-91

WEATHER SUNNY

TEMP. 92°

ROUTE 105

COUNTY WOOD

TOWNSHIP WEBSTER

SECTION 13

T 5 N R 11 E

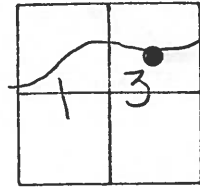
TYPE MONUMENT P.K. / WASHER

ON SURFACE - BELOW YES

~~LEFT - & PAV'T.~~ - RIGHT 11.2'

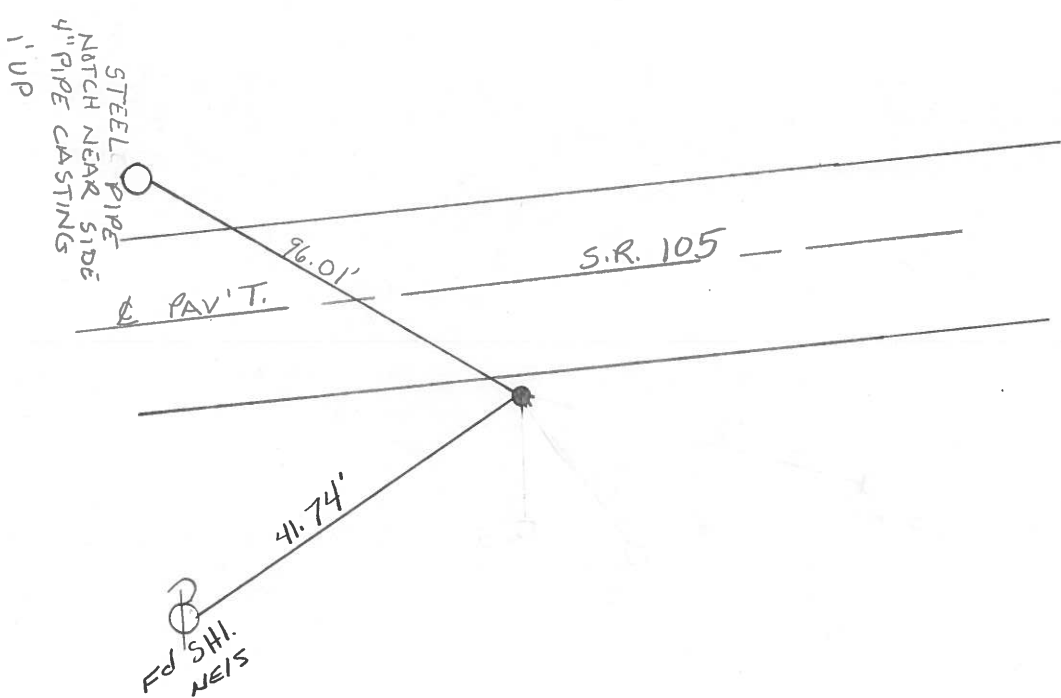
0.2' TO 5' EDGE PAVEMENT

S.L.M. 255+69



SET PK & WASHER
11-26-91
BVU

Records:
ORIGINAL UNKNOWN



County Wood S.R. 105

Date 4-21-82

Township Webster

Weather clear - windy

Section 13

Temp. +45°

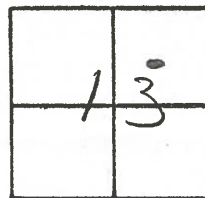
T, N, R, E

Personnel HOFFMAN

Loehrke

Householder

35-A



Fd. P.K. @ SURFACE - SOURCE UNKNOWN

Project Sta ± 255+94

10.3 Rt. of ♀ PAUT

20.5 TO N.E.R.

SET P.K./WASHER

0.8 S. of S.E.R.

5-27-82 S.W.H.

