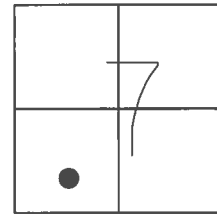


**O.D.O.T. DISTRICT 2 SURVEY OFFICE (USE ONLY)**

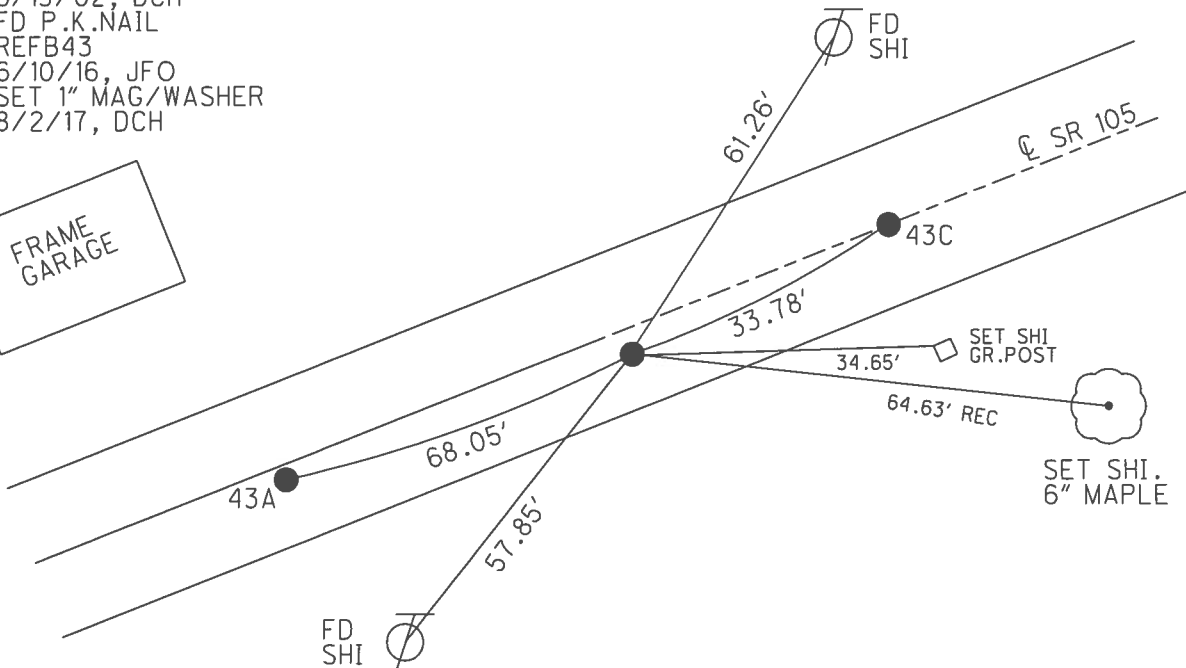
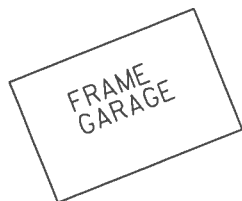
PERSONNEL	REFERENCE NO.	43 B	SHEET	48	OF	54
NOTES	RHOADES	DATE	9/13/16	ROUTE	SR 105	
H.C.	O'DONNELL	WEATHER	FAIR	COUNTY	WOOD	
R.C.	TODD	TEMP.	58°	TOWNSHIP	WEBSTER	
				SECTION	7	
				T	5	N
				R	11	E

TYPE MONUMENT P.K.NAIL  
 ON SURFACE - BELOW ON  
 LEFT - ☉ PAV'T - RIGHT 2.2'  
7.7' TORT EDGE PAVEMENT  
 S.L.M. 291+95



GRID: NORTHING: 633318.338 EASTING: 1686481.342

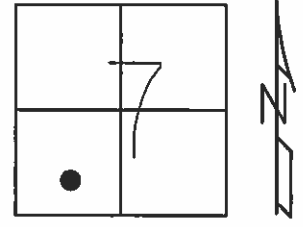
RECORD: P.I.  
 STA. 293+14.86  
 $\Delta = 7^\circ 56' 20''$  LT  
 FD P.K./WASHER  
 4/15/02, DCH  
 SET P.K./WASHER  
 6/13/02, DCH  
 FD P.K.NAIL  
 REFB43  
 6/10/16, JFO  
 SET 1" MAG/WASHER  
 8/2/17, DCH



**O.D.O.T. DISTRICT 2 SURVEY OFFICE (USE ONLY)**

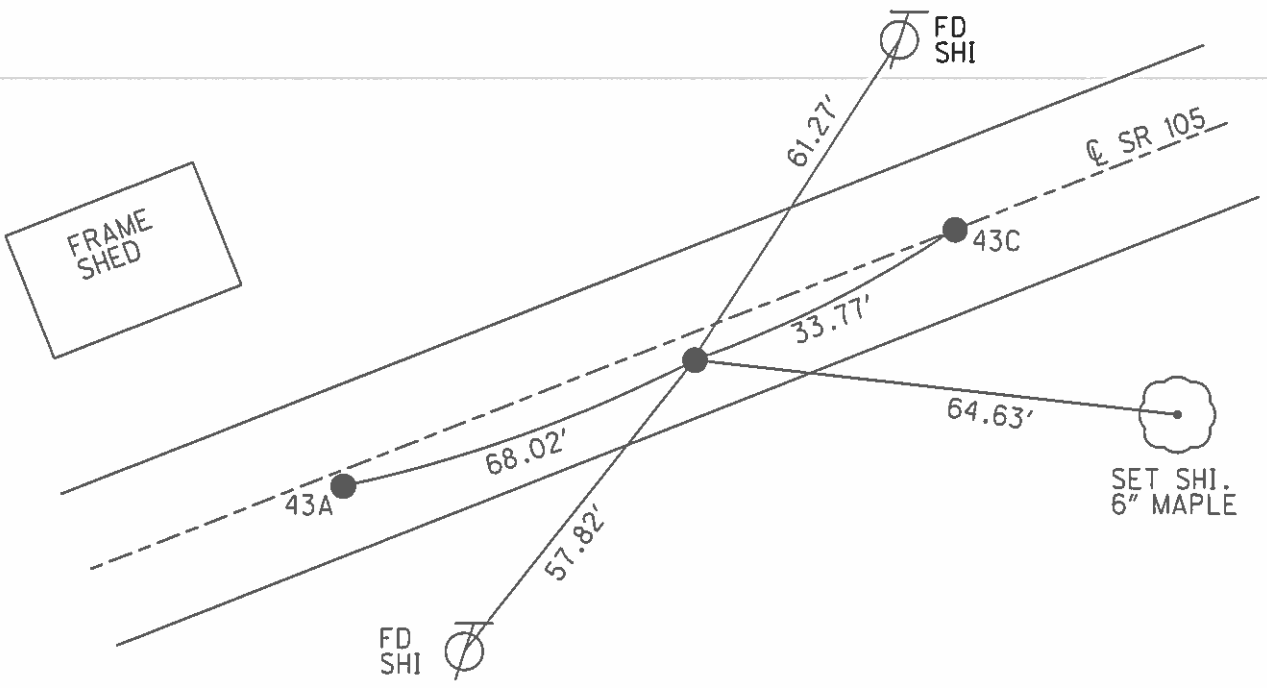
PERSONNEL	REFERENCE NO.	43 B	SHEET	48	OF	54
NOTES	ROUSOS	DATE	4/15/02	ROUTE	SR 105	
H.C.	HOMAN	WEATHER	SUNNY	COUNTY	WOOD	
R.C.	BROWN	TEMP.	74°	TOWNSHIP	WEBSTER	
				SECTION	7	
				T 5	N	R 11 E

TYPE MONUMENT P.K./WASHER  
 ON SURFACE - BELOW ON  
 LEFT - ☉ PAV'T - RIGHT 2.2'  
7.7' TORT EDGE PAVEMENT  
 S.L.M. 291+95



GRID: NORTHING: \_\_\_\_\_ EASTING: \_\_\_\_\_

RECORD: P.I.  
 STA. 293+14.86  
 $\Delta = 7^\circ 56' 20''$  LT  
 SET P.K./WASHER  
 6/13/02, DCH





County WOOD S.R. 105

Date 4-21-82

Township WEBSTER

Weather WINDY

Section 7

Temp. +45°

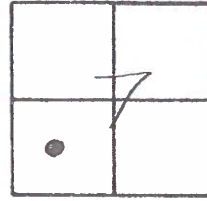
T, N, R, E

Personnel HOFFMAN

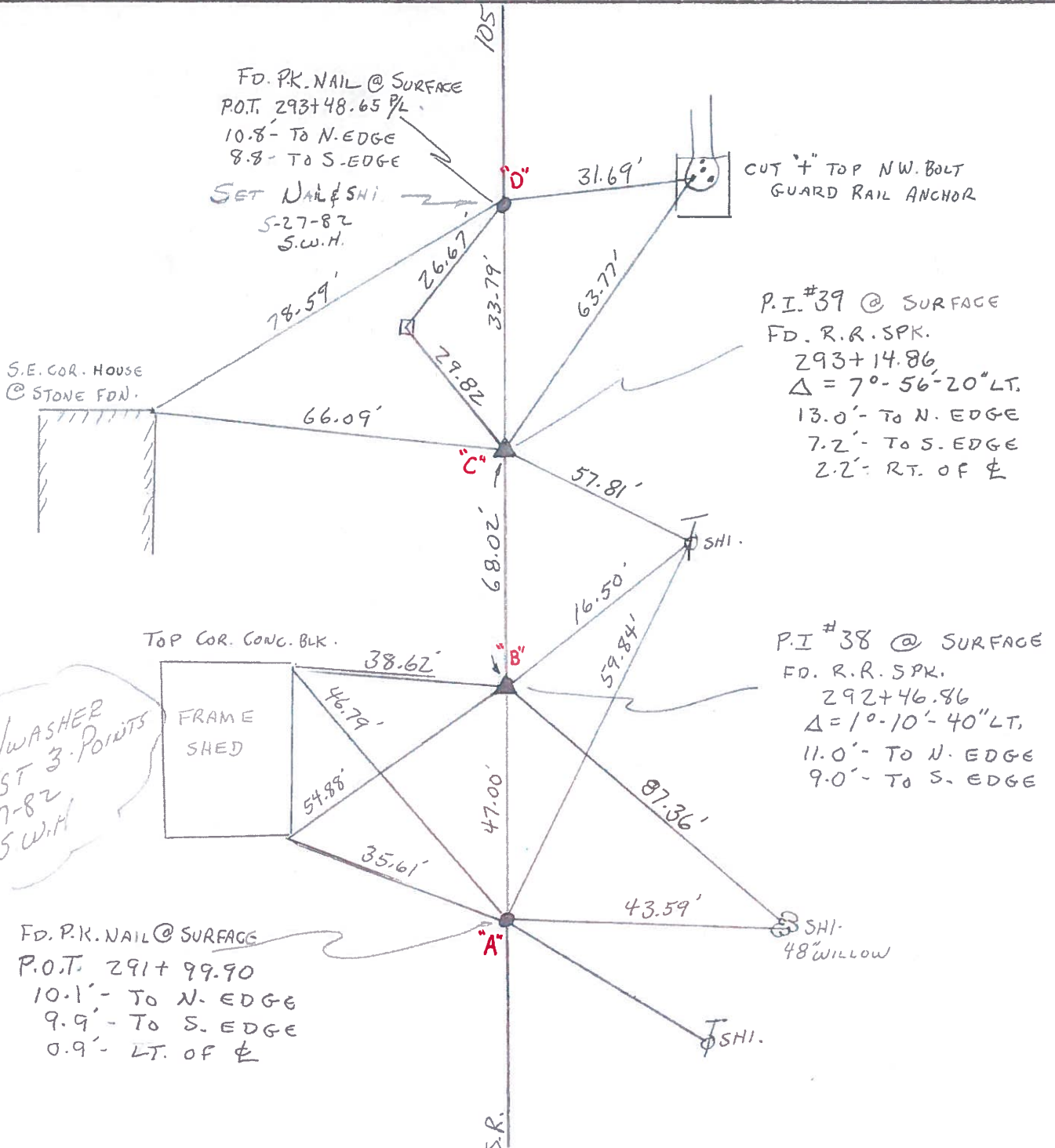
HOUSEHOLDER

LOEHRKE

# 43



A=43  
B=43A  
C=43B  
D=43C



SET P.K./WASHER  
@ FIRST 3 POINTS  
5-27-82  
S.W.H.