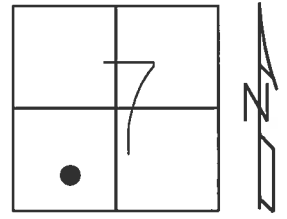


O.D.O.T. DISTRICT 2 SURVEY OFFICE (USE ONLY)

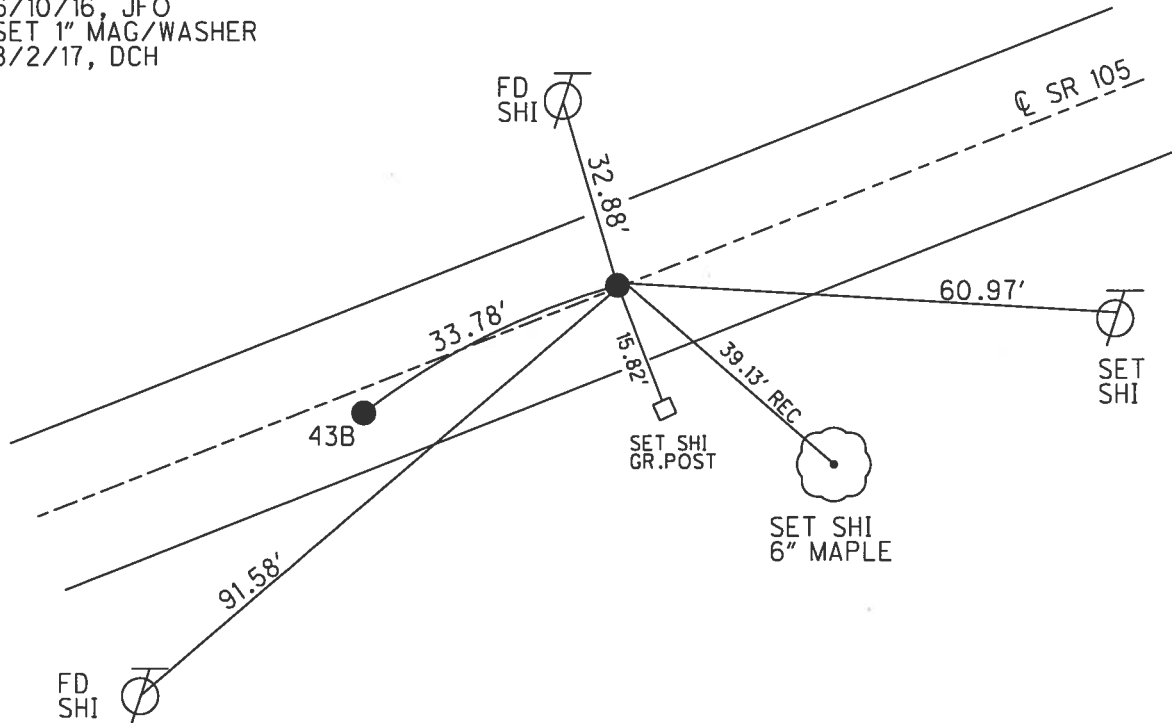
PERSONNEL	REFERENCE NO.	43 C	SHEET	49	OF	54
NOTES	RHOADES	DATE	4/15/02	ROUTE	SR 105	
H.C.	O'DONNELL	WEATHER	SUNNY	COUNTY	WOOD	
R.C.	TODD	TEMP.	74°	TOWNSHIP	WEBSTER	
				SECTION	7	
				T 5	N	R 11 E

TYPE MONUMENT MAG/WASHER
 ON SURFACE - BELOW ON
 LEFT - ☉ PAV'T - RIGHT -
- TO - EDGE PAVEMENT
 S.L.M. 292+29



GRID: NORTHING: 633338.270 EASTING: 1686508.606

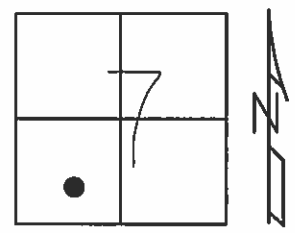
RECORD: P.O.T.
 STA 293+48.65
 FD P.K./WASHER
 4/15/02, DCH
 SET P.K./WASHER
 6/13/02, DCH
 SET MAG/WASHER
 REFC43
 6/10/16, JFO
 SET 1" MAG/WASHER
 8/2/17, DCH



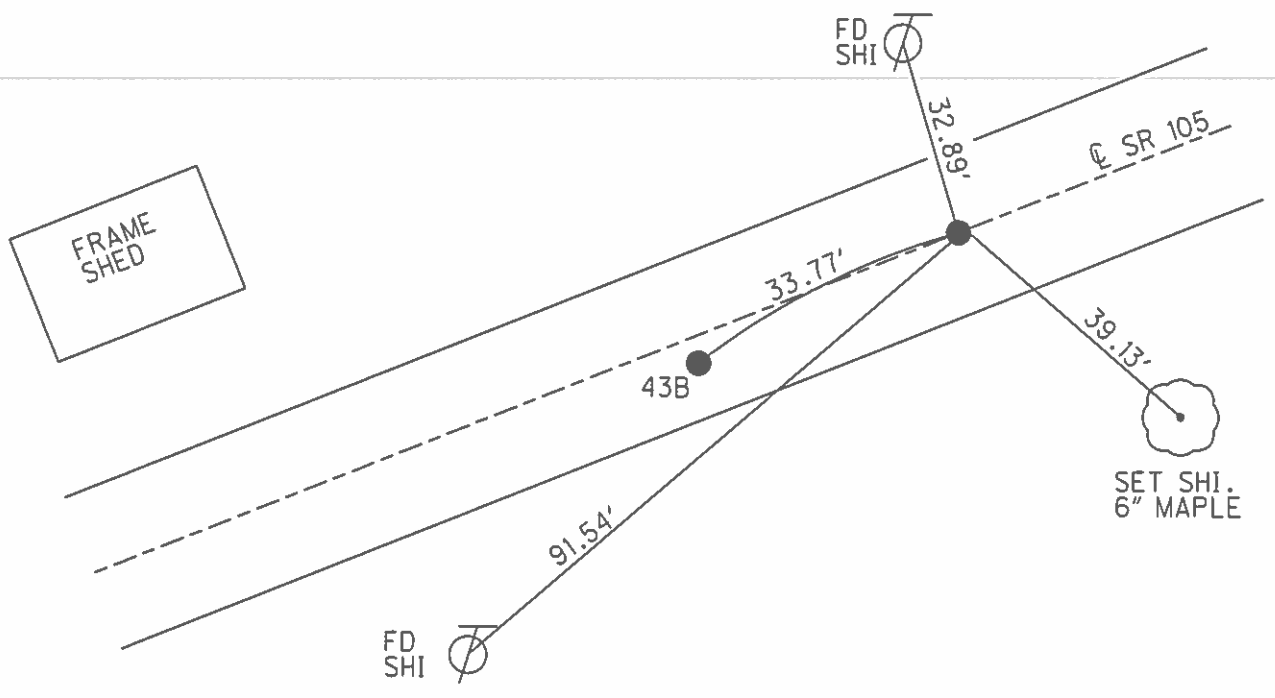
O.D.O.T. DISTRICT 2 SURVEY OFFICE (USE ONLY)

PERSONNEL	REFERENCE NO.	43 C	SHEET	49	OF	54
NOTES	ROUSOS	DATE	4/15/02	ROUTE	SR 105	
H.C.	HOMAN	WEATHER	SUNNY	COUNTY	WOOD	
R.C.	BROWN	TEMP.	74°	TOWNSHIP	WEBSTER	
				SECTION	7	
				T 5 N	R 11 E	

TYPE MONUMENT P.K./WASHER
 ON SURFACE - BELOW ON
 LEFT - ☉ PAV'T - RIGHT -
- TO - EDGE PAVEMENT
 S.L.M. 292+29
 GRID: NORTHING: _____ EASTING: _____



RECORD: P.O.T.
 STA 293+48.65
 SET P.K./WASHER
 6/13/02, DCH



O.D.O.T. DISTRICT 2 SURVEY OFFICE

PERSONNEL

REFERENCE NO. 43

SHEET 53 OF 57

NOTES LONG

H.C. VANDUSEN

R.C. BARNHISEL

DATE 8-27-91

WEATHER SUNNY

TEMP. 88°

ROUTE 105

COUNTY WOOD

TOWNSHIP WEBSTER

SECTION 7

T 5 N R 11 E

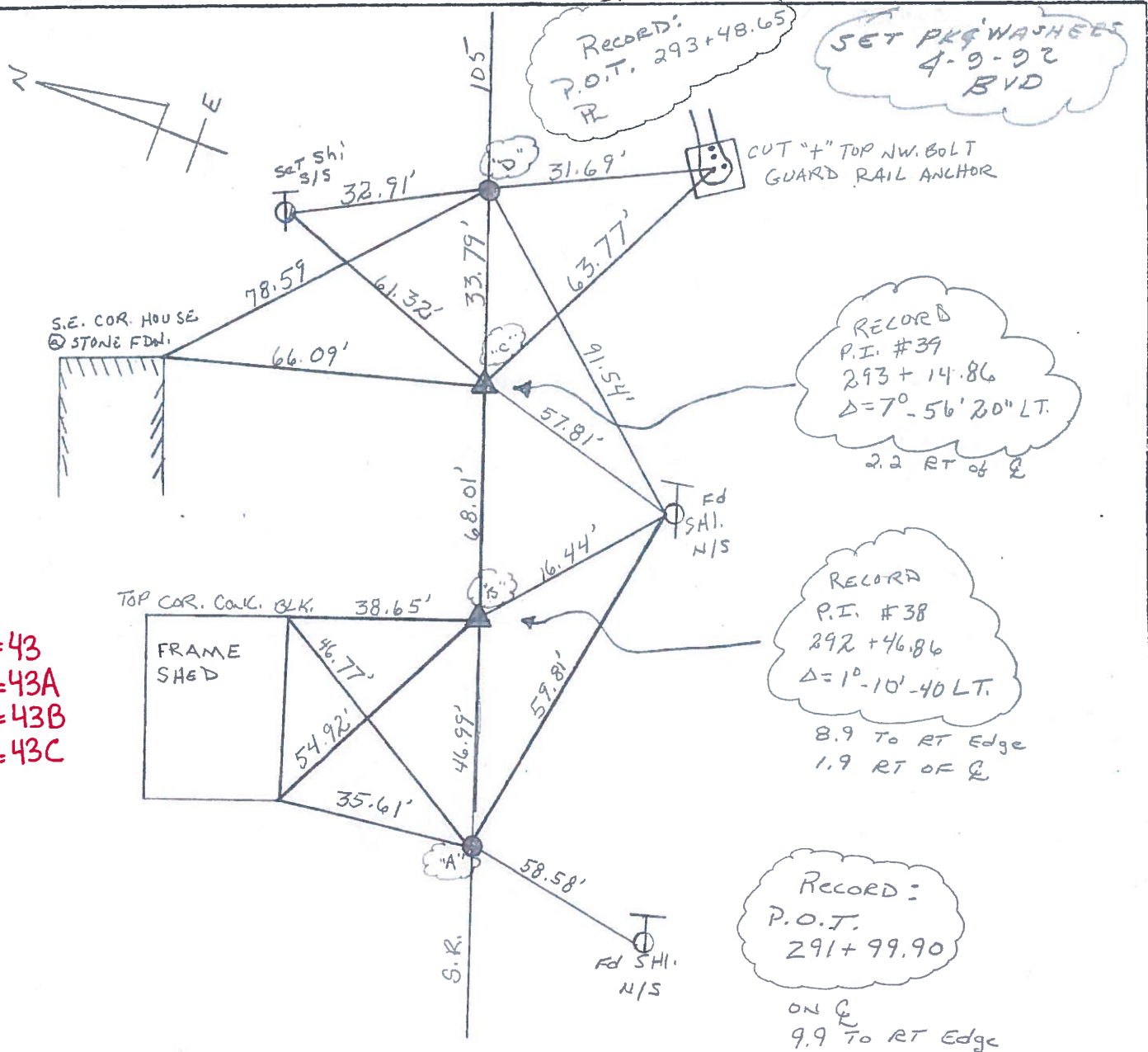
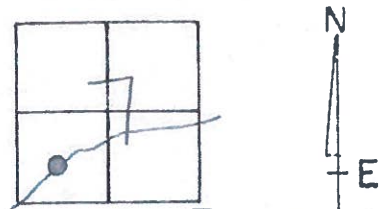
TYPE MONUMENT P.K. & WASHER - PT. "A"

ON SURFACE - ~~BELOW~~ YES

~~LEFT - C~~ PAV'T. - RIGHT YES

9.9 TO RT EDGE PAVEMENT

S.L.M. 290+80



A=43
B=43A
C=43B
D=43C

RECORD:
P.O.T. 293+48.65
R

SET PK& WASHERS
4-9-92
BVD

RECORD
P.I. #39
293+14.86
Δ=7°-56'20" LT.
2.2 RT of Q

RECORD
P.I. #38
292+46.86
Δ=1°-10'-40" LT.
8.9 TO RT Edge
1.9 RT OF Q

RECORD:
P.O.T.
291+99.90

ON Q
9.9 TO RT Edge

County WOOD S.R. 105

Date 4-21-82

Township WEBSTER

Weather WINDY

Section 7

Temp. +45°

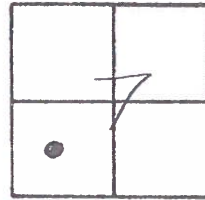
T, N, R, E

Personnel HOFFMAN

HOUSEHOLDER

LOEHRKE

43



A=43
B=43A
C=43B
D=43C

