

O.D.O.T. DISTRICT 2 SURVEY OFFICE (USE ONLY)

PERSONNEL

REFERENCE NO. 51 A

SHEET 3 OF 33

NOTES RHOADES

DATE 6/12/13

ROUTE SR 105

H.C. CODER

WEATHER FAIR

COUNTY WOOD

R.C. RHOADES

TEMP. 68°

TOWNSHIP WEBSTER

SECTION 7

T 5 N R 12 E

TYPE MONUMENT P.K./WASHER

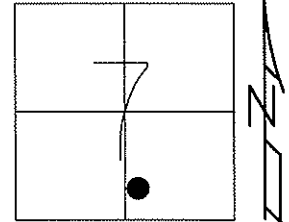
ON SURFACE - ~~BELOW~~ ON

LEFT - CL PAV'T - ~~RIGHT~~ 5.4'

4.8' TO RT EDGE PAVEMENT

S.L.M. 311+40

Grid: Northing: 634238.604 Easting: 1688173.821

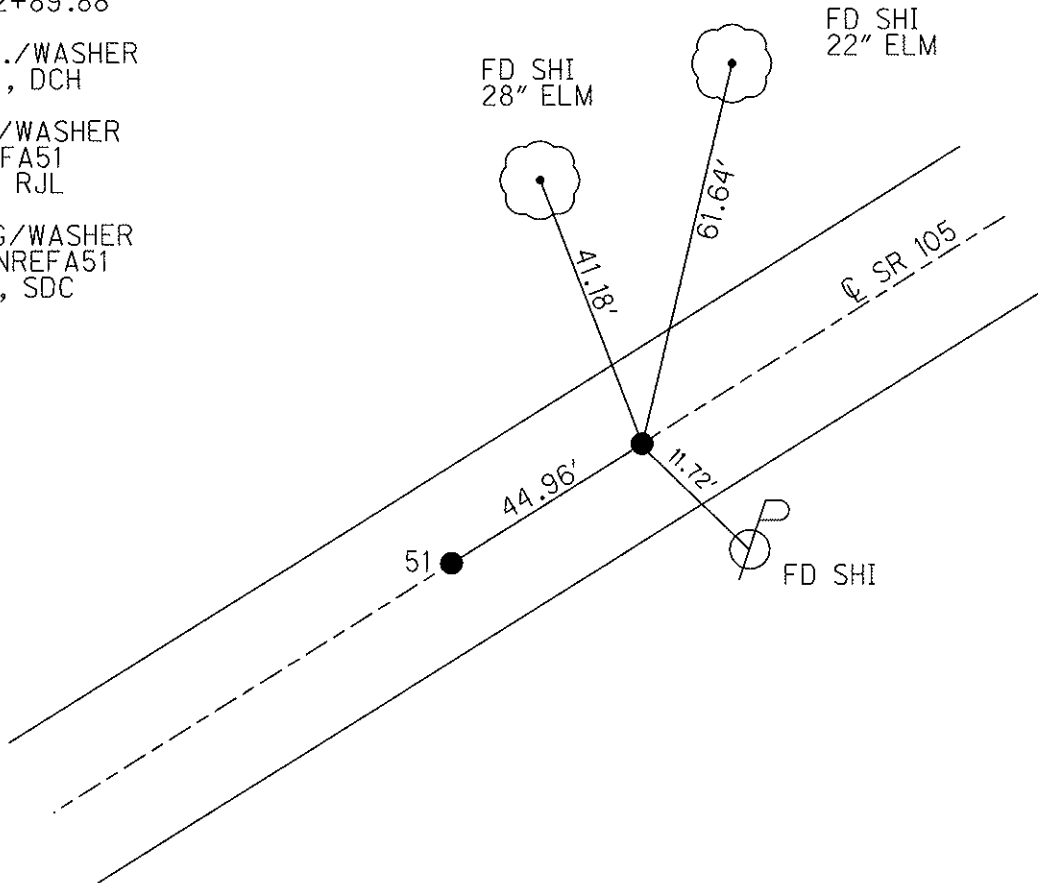


RECORD P.I. #44
STA. 312+89.88

SET P.K./WASHER
6/13/02, DCH

FD P.K./WASHER
GPS, REFA51
10/11/11, RJL

SET MAG/WASHER
GPS, FINREFA51
10/3/13, SDC



O.D.O.T. DISTRICT 2 SURVEY OFFICE

PERSONNEL

REFERENCE NO. 51

SHEET 60 OF 63

NOTES ROUSOS

DATE 4-16-02

ROUTE SR 105

H.C. HOMAN

WEATHER SUNNY

COUNTY WOOD

R.C. BROWN

TEMP. 70°

TOWNSHIP WEBSTER

SECTION 13

T 5 N R 12 E

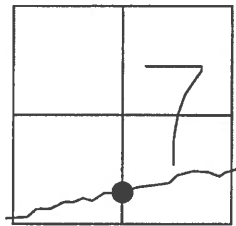
TYPE MONUMENT PK'S & WASHER'S

ON SURFACE - ~~BELOW~~ ON SURFACE

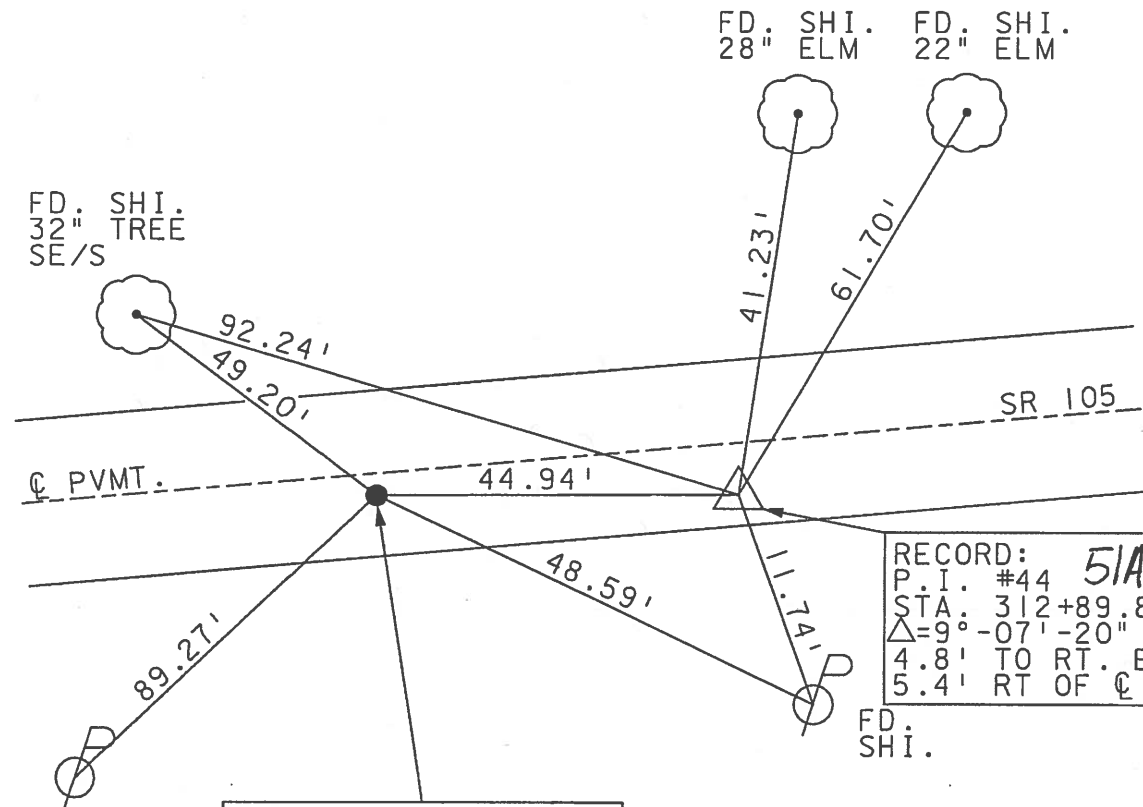
LEFT - Q PAV'T - RIGHT SEE BELOW

TO EDGE PAVEMENT

S.L.M. 310+95 311+40



SET PK'S & WASHER'S
6-13-02 D.C.H.



RECORD: **51A**
P.I. #44
STA. 312+89.88
 $\Delta = 9^\circ - 07' - 20''$ LT.
4.8' TO RT. EDGE
5.4' RT OF Q PVMT.

REC. P.O.T.
STA. 312+45.00
FD. PK & WASHER
5.7' TO RT. EDGE
2.7' RT. OF Q PVMT.

FD. SHI.
NE/S
51

O.D.O.T. DISTRICT 2 SURVEY OFFICE

PERSONNEL _____

REFERENCE NO. 51

SHEET 1 OF 49

NOTES LOEHRKE

H.C. CANTERBURY

DATE 8-1-94

ROUTE S.R. 105

R.C. Moser

WEATHER FAIR

COUNTY Wood

TEMP. +80

TOWNSHIP WEBSTER

SECTION 7

T 5 N R 12 E

TYPE MONUMENT P.K. / WASHERS

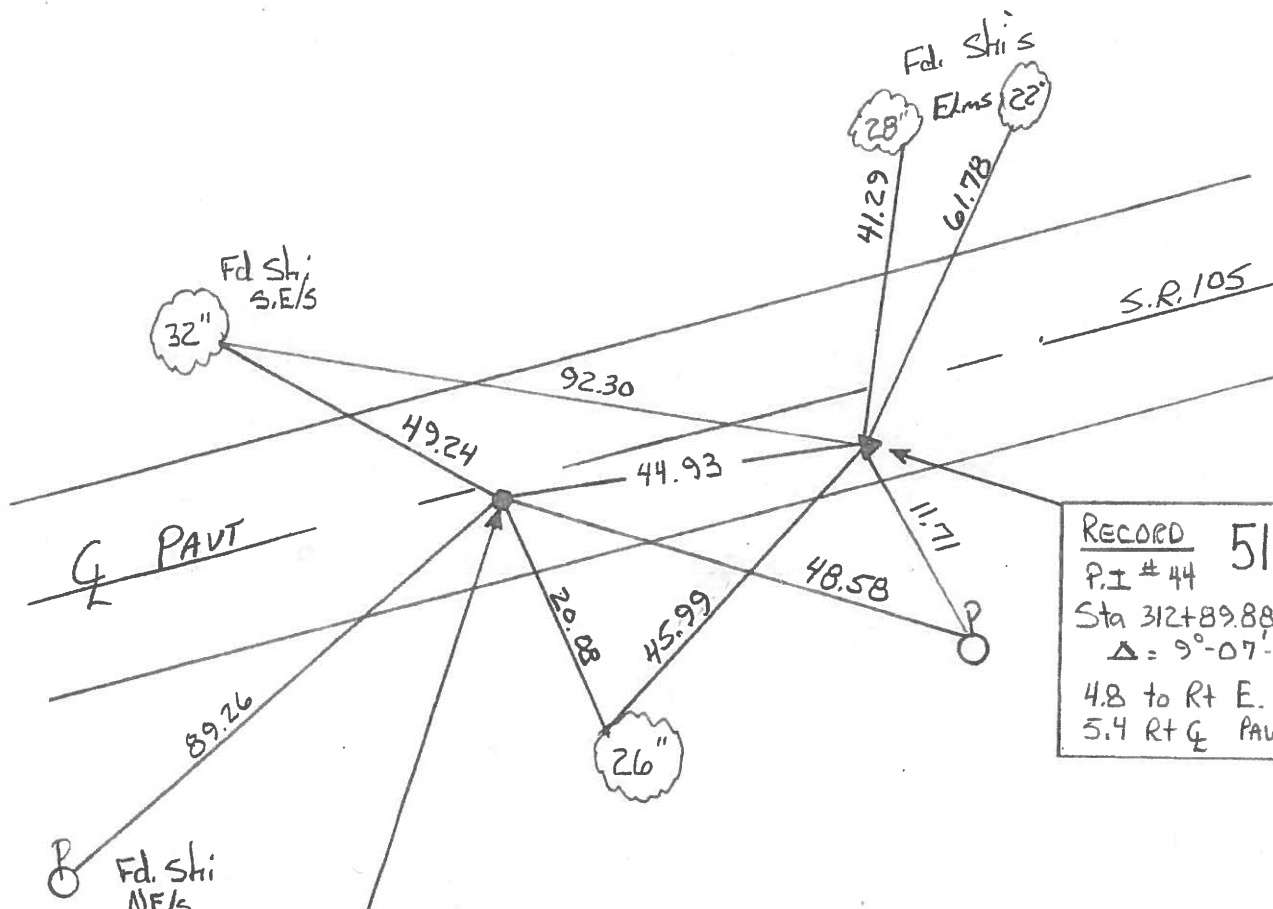
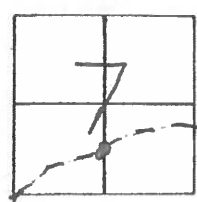
Reset 11-9-94
C.L.

ON SURFACE - ~~BELOW~~ Yes

~~LEFT~~ - CL PAV'T. - RIGHT 2.7 and 5.4

TO EDGE PAVEMENT

S.L.M. 312+45 AND 312+90



RECORD 51A
 P.I # 44
 Sta 312+89.88
 $\Delta = 9^{\circ}-07'-20''$ Lt.
 4.8 to Rt E. PAVT
 5.4 Rt CL PAVT

51
 Rec. P.O.T. Sta 312+45.00
 Fd P.K. / WASHER
 5.7' to Rt E. PAVT
 2.7 Rt of CL PAVT.

Kas...

OD.O.T. DISTRICT 2 SURVEY OFFICE

SHEET _____ OF _____

County Wood S.R. 105

Date 5-29-84

Township WEBSTER

Weather CLOUDY

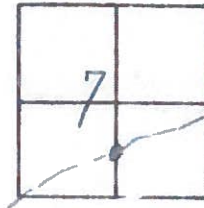
Section 7

Temp. +50°

T5N, R12E

Personnel	<u>LOHRKE</u>	<u>IT</u>
	<u>BARWISSEL</u>	<u>HC</u>
	<u>HOUSEHOLDER</u>	<u>RC</u>

#51



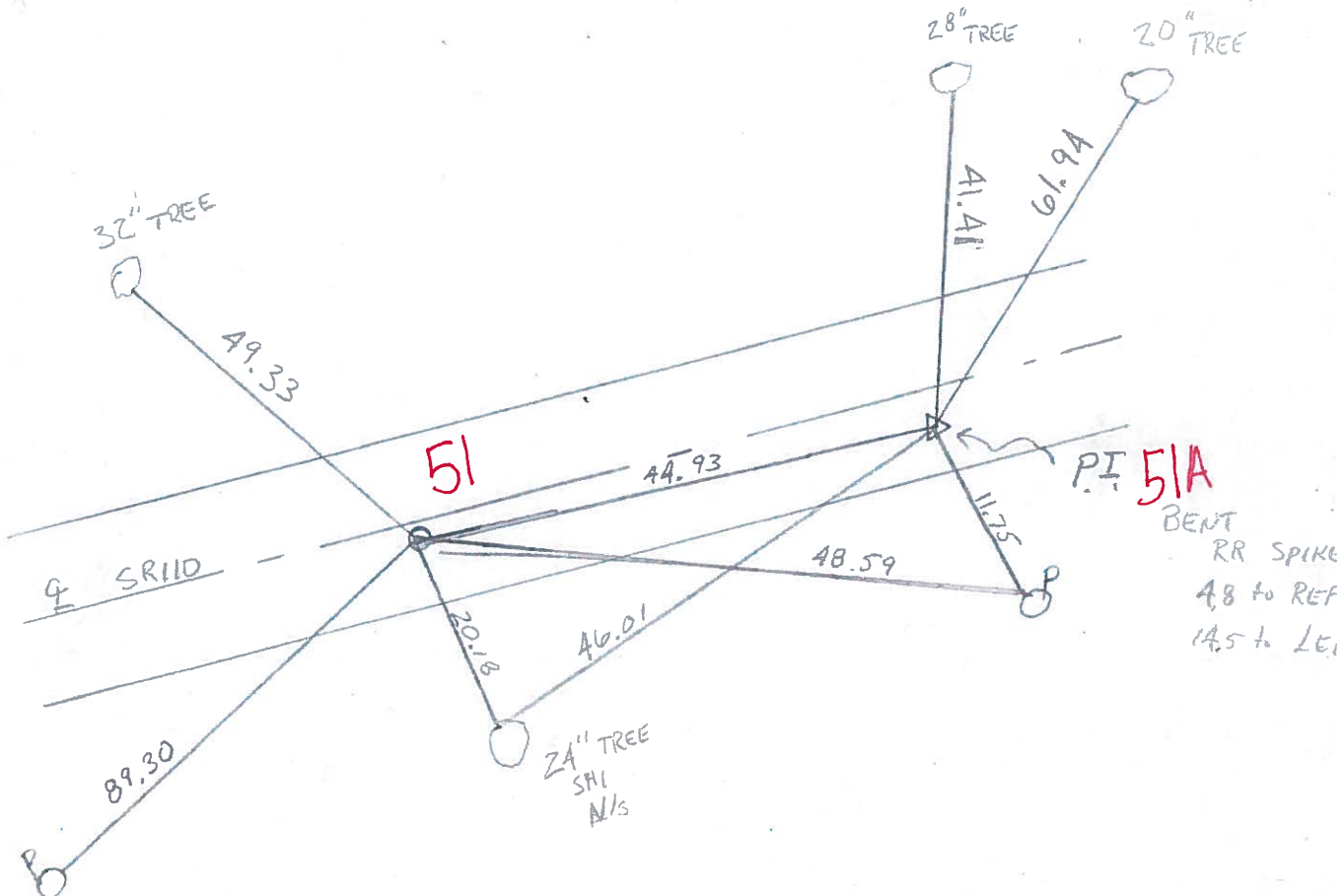
PI #44

PI 311+59

SET PK
9-27-84
C.L.

312+189.68

$\Delta = 9^{\circ} - 07' - 20''$ Lt



PI 51A
BENT
RR SPIKE
48 to REF
14.5 to LEI

POT
312+45.00
SMALL RR SPIKE
7.0 to REP
12.3 to LEP

County WOOD S.R. 105

Date SEPT. 27-73

Township WEBSTER

Weather MILD

Section 7

Temp. 70°

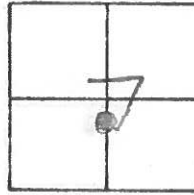
T N, R E

Personnel STONE

MICHALAK

CURTIS

DENNO

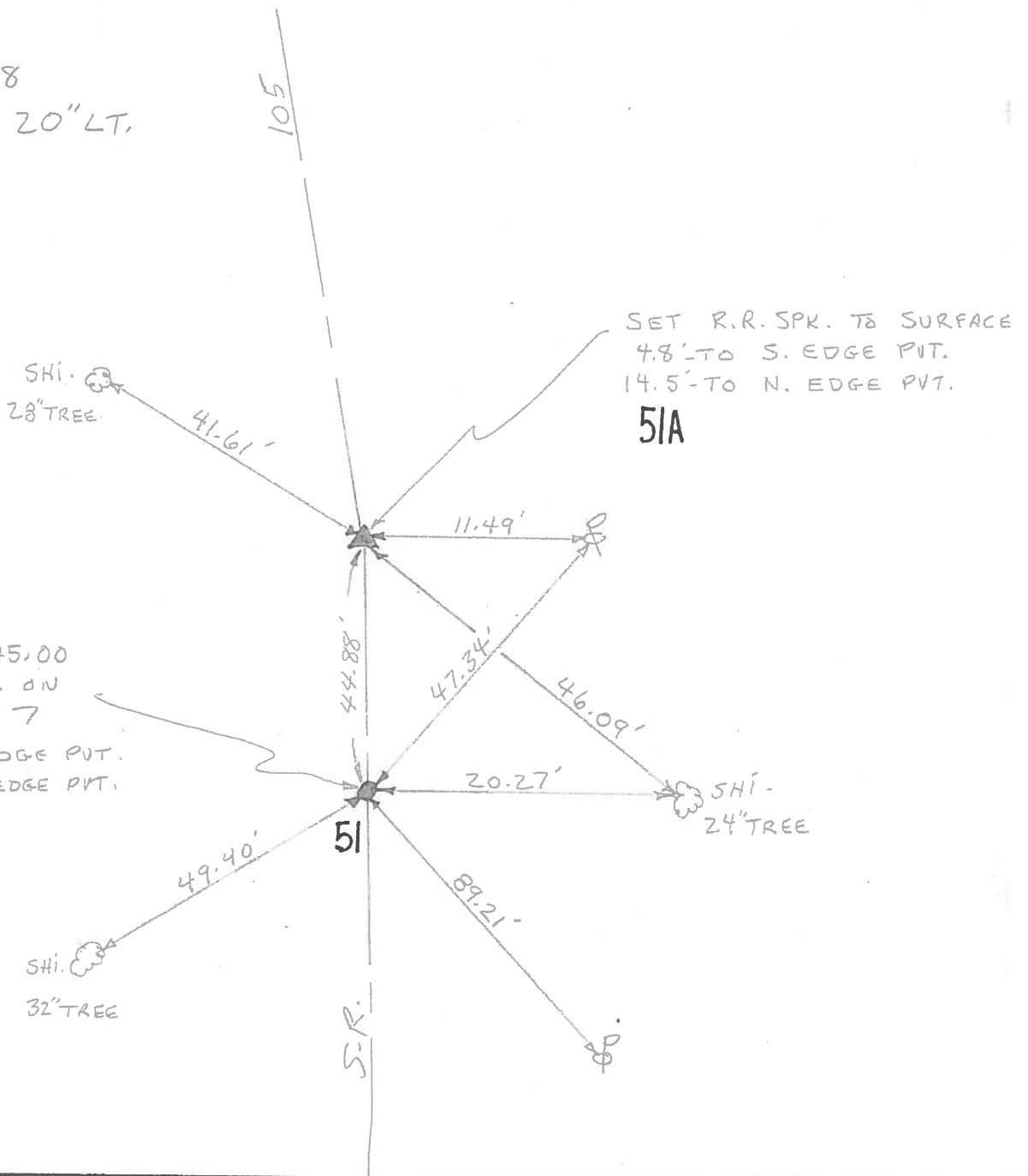


#51

P.I. #44

312+89.88

$\Delta = 9^{\circ} 07' 20''$ LT.



SET R.R. SPK. TO SURFACE
4.8' TO S. EDGE PVT.
14.5' TO N. EDGE PVT.

51A

P.O.T. 312+45.00

SET SPK. ON

SECTION 7

7.0' TO S. EDGE PVT.

12.3' TO N. EDGE PVT.

51

SHI -
24" TREE