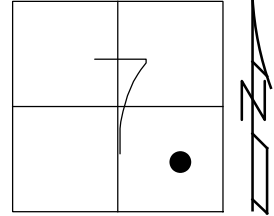


O.D.O.T. DISTRICT 2 SURVEY OFFICE (USE ONLY)

PERSONNEL _____ REFERENCE NO. 54 SHEET 8 OF 33
 NOTES MILLER DATE 9/19/23 ROUTE SR 105
 H.C. MILLER WEATHER SUNNY COUNTY WOOD
 R.C. RHOADES TEMP. 65° TOWNSHIP WEBSTER
 DWG BY RHOADES PID PAVETRAIN SECTION 7
 T 5 N R 12 E

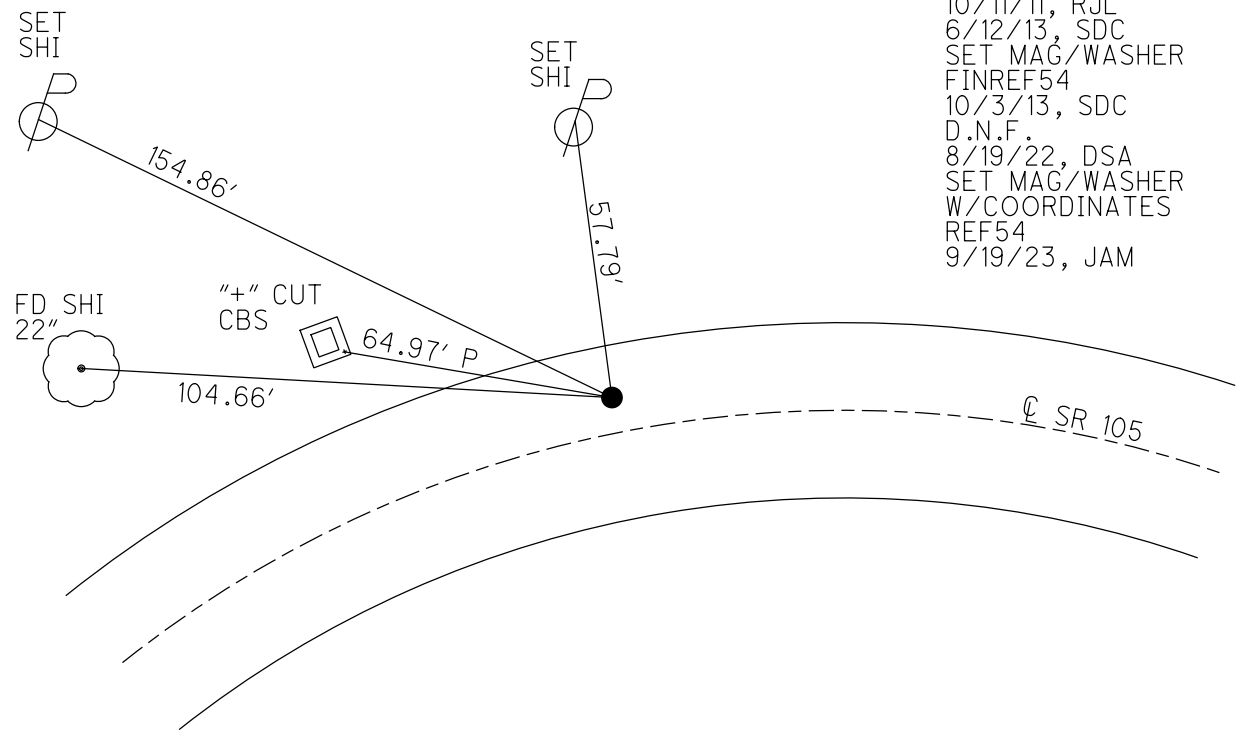
TYPE MONUMENT MAG/WASHER
 ON SURFACE - ~~BELOW~~ ON
 OFFSET CL PAVEMENT 4.6' LT : ~~RT~~
5.6' TO LT EDGE PAVEMENT
 STATION: 321+91.86



HORZ.DATUM: NAD83 2011 GEOID: NAVD88 2012A
 GRID: NORTHING: 634626.217 EASTING: 1689107.347

WOOD LDP:
 N: 456952.232
 E: 200123.275

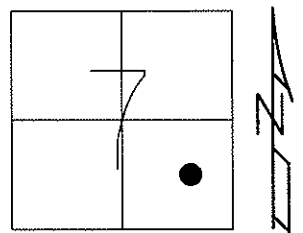
RECORD P.I.
 STA. 323+12.93
 $\Delta=7^{\circ} 31' 20''$ RT
 FD P.K./WASHER
 8/1/94, CHANEY
 SET P.K./WASHER
 11/8/94, CL
 FD P.K./WASHER
 4/16/02, DCH
 FD P.K./WASHER
 REF54
 10/11/11, RJL
 6/12/13, SDC
 SET MAG/WASHER
 FINREF54
 10/3/13, SDC
 D.N.F.
 8/19/22, DSA
 SET MAG/WASHER
 W/COORDINATES
 REF54
 9/19/23, JAM



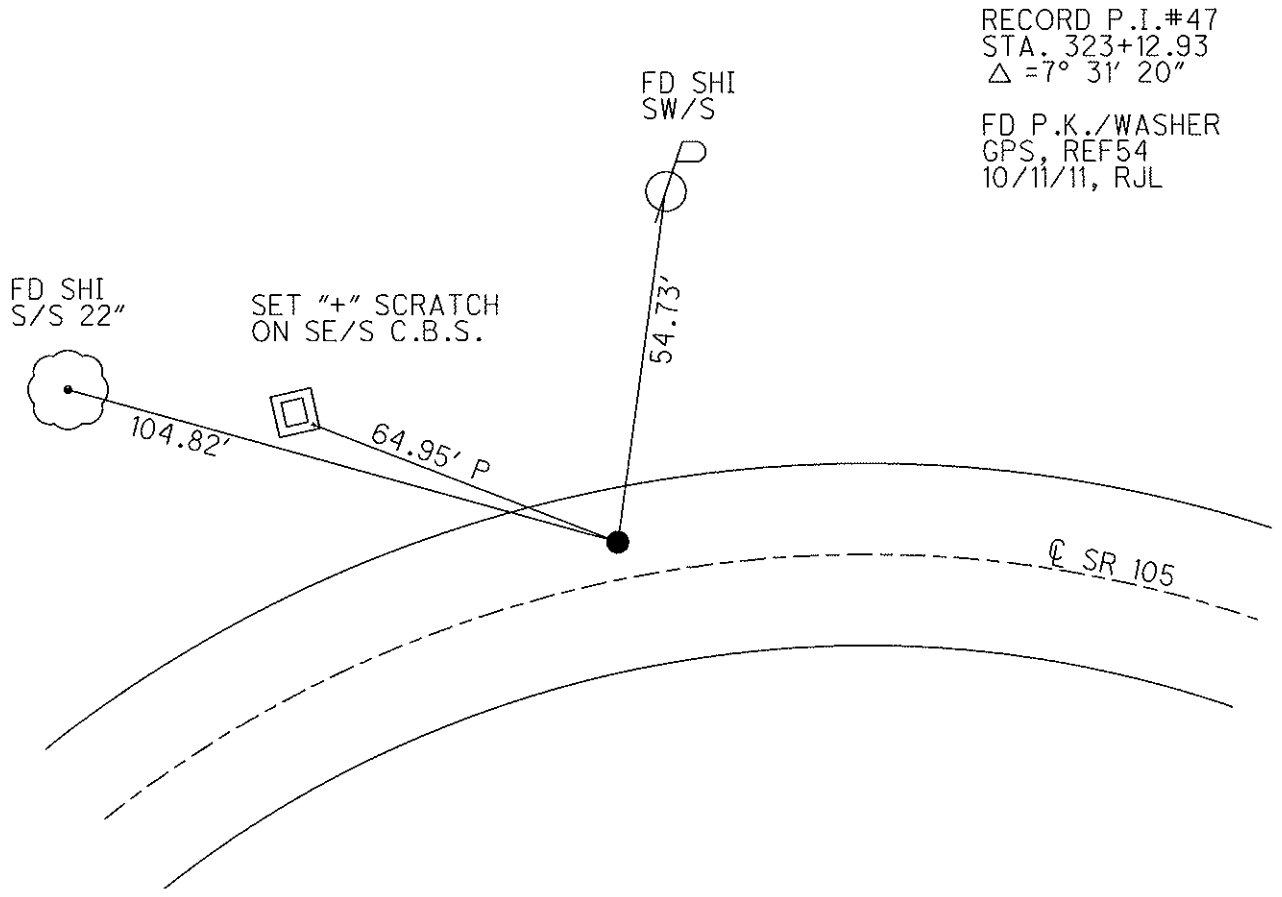
O.D.O.T. DISTRICT 2 SURVEY OFFICE (USE ONLY)

PERSONNEL	REFERENCE NO. <u>54</u>	SHEET <u>8</u> OF <u>33</u>
NOTES <u>RHOADES</u>	DATE <u>6/12/13</u>	ROUTE <u>SR 105</u>
H.C. <u>CODER</u>	WEATHER <u>FAIR</u>	COUNTY <u>WOOD</u>
R.C. <u>RHOADES</u>	TEMP. <u>68°</u>	TOWNSHIP <u>WEBSTER</u>
		SECTION <u>7</u>
		T <u>5</u> N R <u>12</u> E

TYPE MONUMENT P.K./WASHER
 ON SURFACE - ~~BELOW~~ ON
 LEFT - Q PAV'T - ~~RIGHT~~ 4.6'
5.6' TO LT EDGE PAVEMENT
 S.L.M. 321+69



Grid: Northing: 634626.217 Easting: 1689107.347



RECORD P.I. #47
 STA. 323+12.93
 $\Delta = 7^{\circ} 31' 20''$
 FD P.K./WASHER
 GPS, REF54
 10/11/11, RJL

O.D.O.T. DISTRICT 2 SURVEY OFFICE

PERSONNEL

REFERENCE NO. 54

SHEET 63 OF 63

NOTES ROUSOS

DATE 4-16-02

ROUTE SR 105

H.C. HOMAN

WEATHER SUNNY

COUNTY WOOD

R.C. BROWN

TEMP. 70°

TOWNSHIP WEBSTER

SECTION 7

T 5 N R 12 E

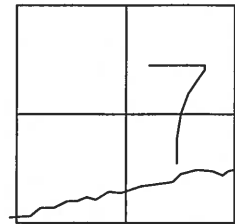
TYPE MONUMENT PK & WASHER

ON SURFACE - ~~BELOW~~ ON SURFACE

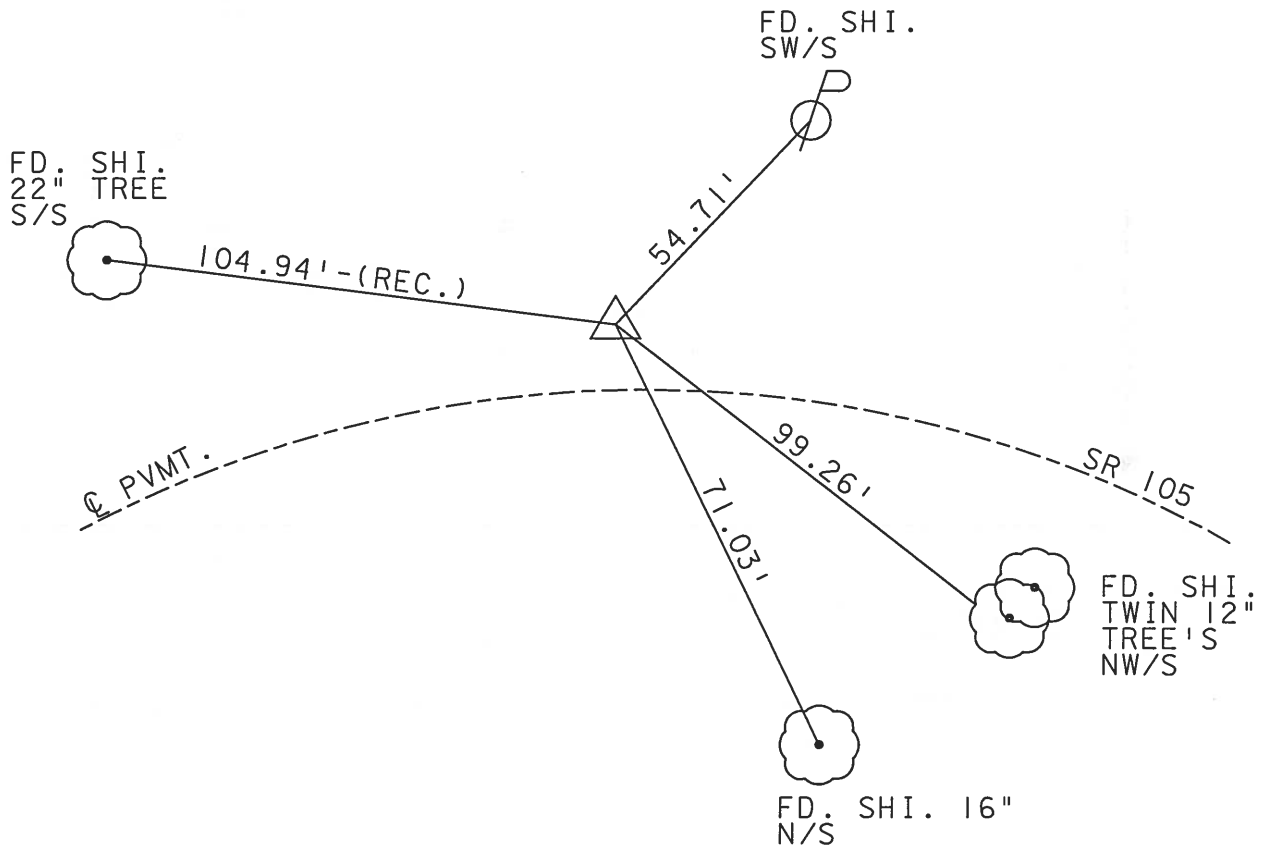
LEFT - Q PAVT - ~~RIGHT~~ 4.6' LT.

5.6' TO LT. EDGE PAVEMENT

S.L.M. 321+69



RECORD P.I. #47
 STA. 323+12.93
 $\Delta = 7^\circ - 31' - 20''$ RT.



O.D.O.T. DISTRICT 2 SURVEY OFFICE

PERSONNEL _____

REFERENCE NO. 54

SHEET 4 OF 49

NOTES CHANNEY

H.C. RIPPLE

R.C. BARBOUR

DATE B-1-94

WEATHER FAIR

TEMP. +80

ROUTE S.R. 105

COUNTY WOOD

TOWNSHIP WEBSTER

SECTION 7

T 5 N R 12 E

TYPE MONUMENT P.K. / WASHER

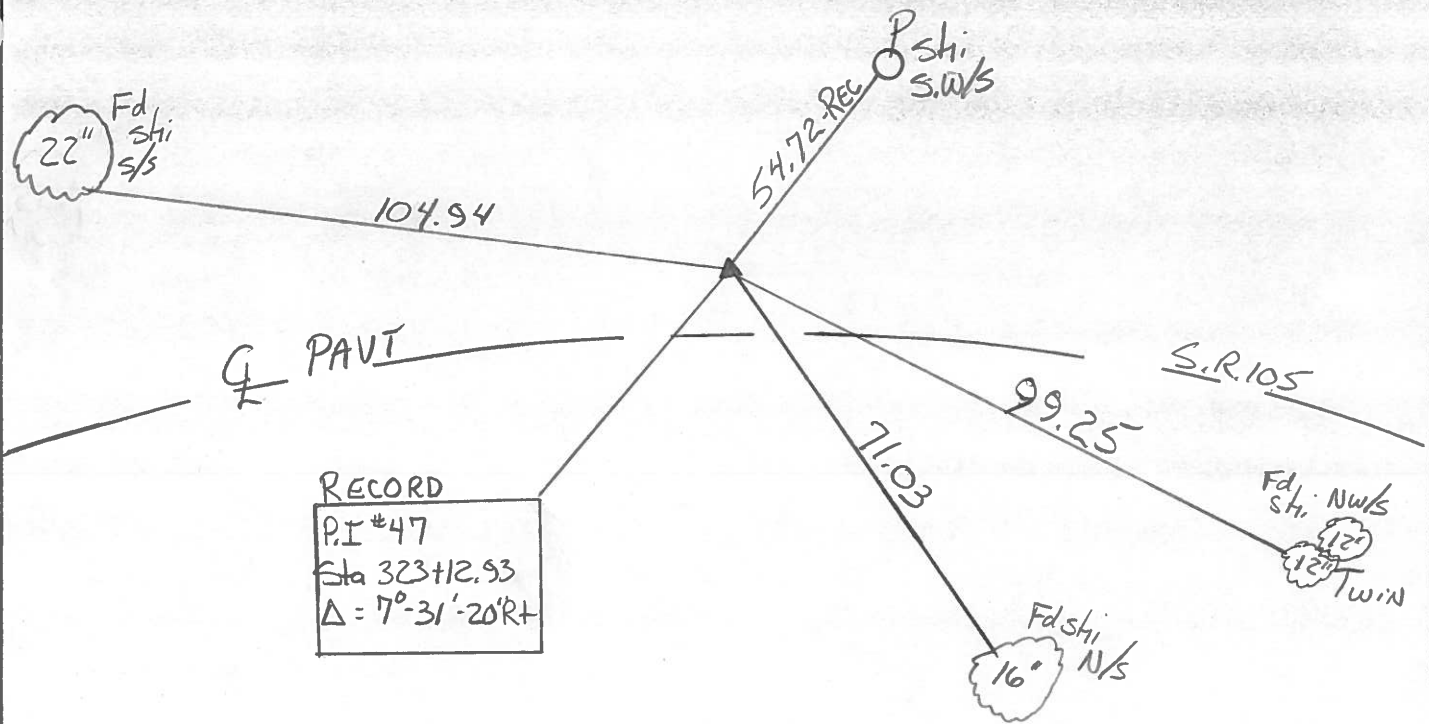
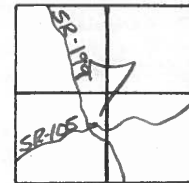
*Reset-11-8-94
C.L.*

ON SURFACE - BELOW Yes

LEFT - C PAV'T. - RIGHT 4.6 Lt

5.6 TO Lt EDGE PAVEMENT

S.L.M. 323+17



QD.O.T. DISTRICT 2 SURVEY OFFICE

SHEET _____ OF _____

County WOOD S.R. 105

Date 7-10-84

Township WEBSTER

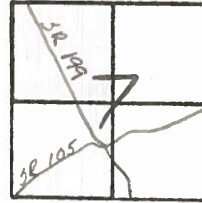
Weather CLEAR HUMID

Section 7

Temp. +90

T5N, R12E

Personnel Hoffman



54

HOUSE	RC
BARNEY	HC
LOEHRKE	TD

RECORDED

Fd Small RR spike @ SURFACE
 AS L.P. of Q PAUT
 1A.5 to REP
 S.D. LEP

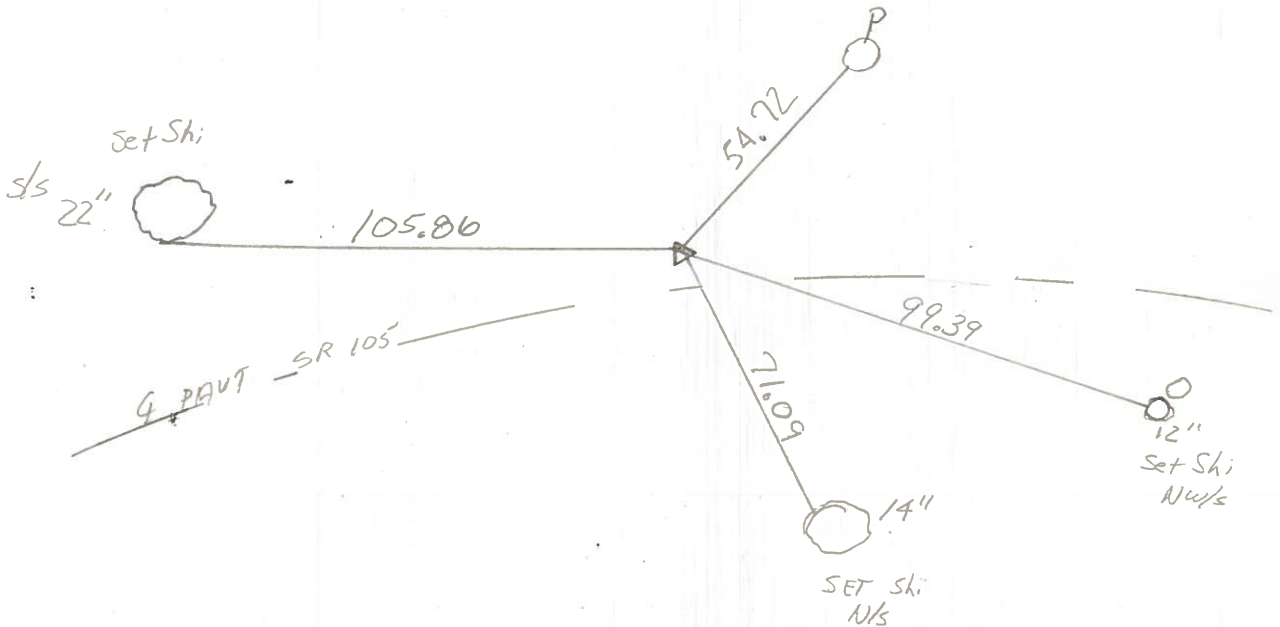
SLM 321780

P.I. # 47

SET P.K.
 9-27-84
 C.L.

323+12.93

$\Delta = 7^{\circ} - 31' - 20''$ Rt.



O.D.O.T. DISTRICT 2 SURVEY OFFICE

SHEET _____ OF _____

County WOOD S.R. 105

Date SEPT. -27-73

Township WEBSTER

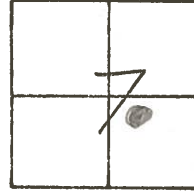
Weather MILD

Section 7

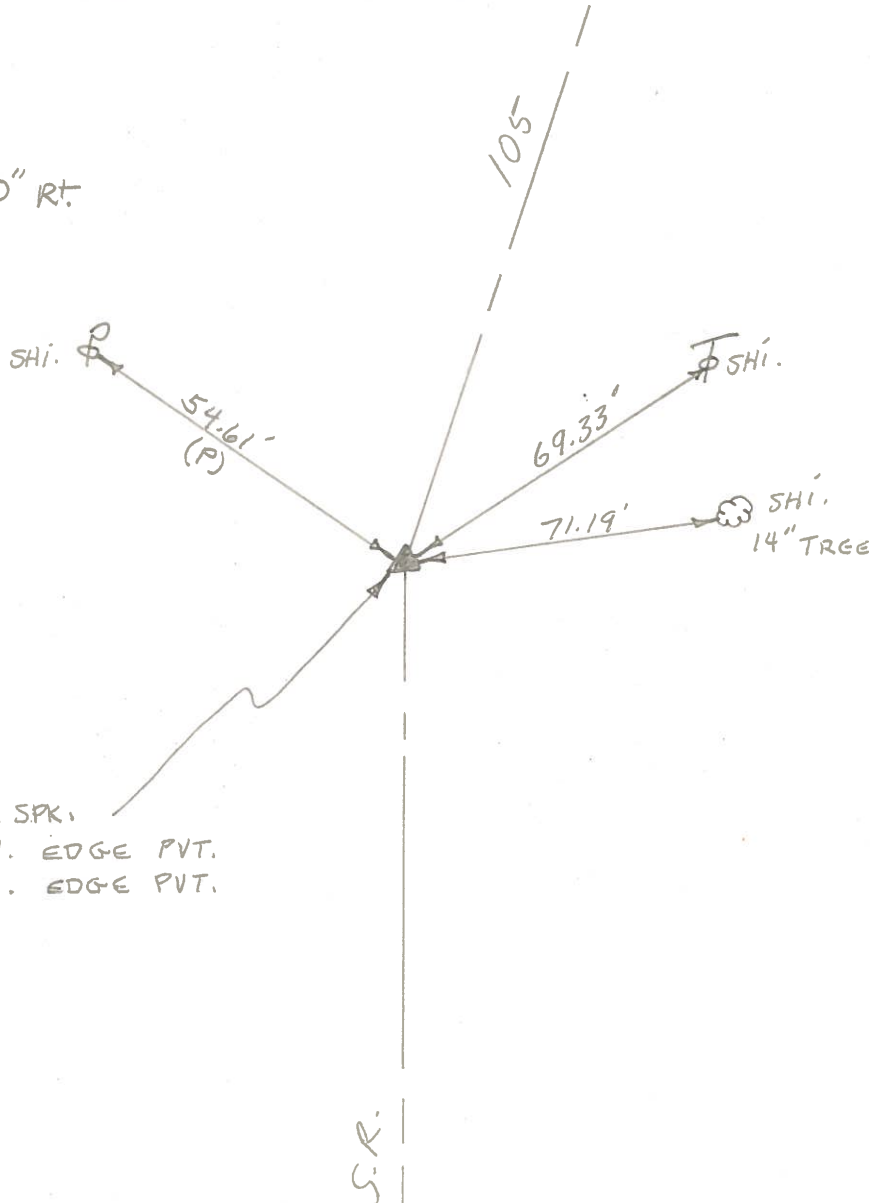
Temp. 75°

T N, R E

Personnel STONE
MICHALAK
CURTIS
DENNO



#54
 P.I. #47
 323+12.93
 A = 7°-31'-20" RT.



SET R.R. SPK.
 4.9'-TO N. EDGE PVT.
 14.3'-TO S. EDGE PVT.

S.R.