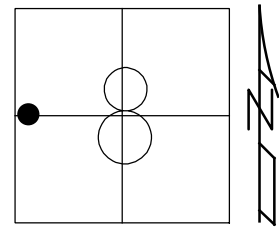


O.D.O.T. DISTRICT 2 SURVEY OFFICE (USE ONLY)

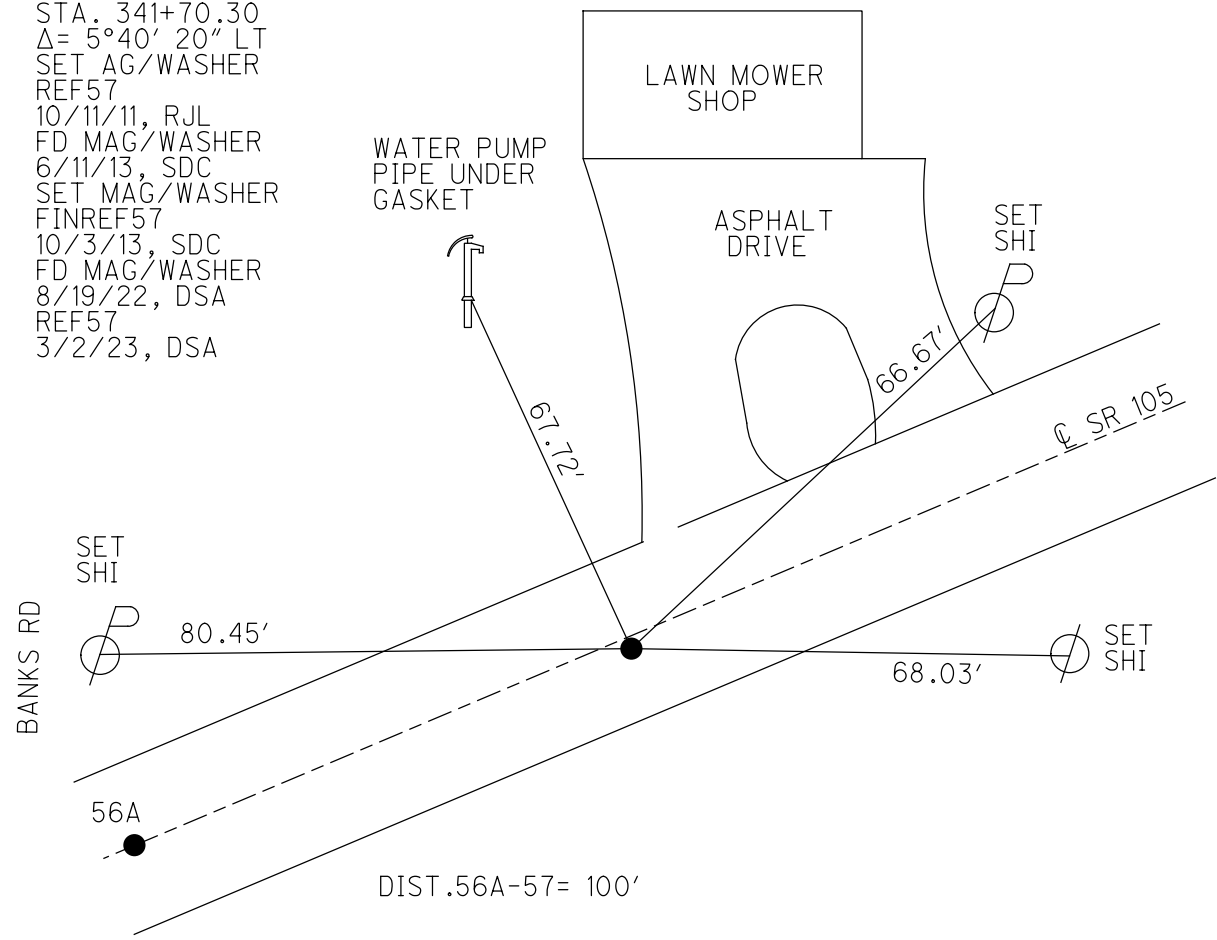
PERSONNEL _____ REFERENCE NO. 57 SHEET 12 OF 33
 NOTES RHOADES DATE 8/19/22 ROUTE SR 105
 H.C. AUBLE WEATHER SUNNY COUNTY WOOD
 R.C. NIESE TEMP. 64° TOWNSHIP WEBSTER
 DWG BY RHOADES PID PAVETRAIN SECTION 8
 T 5 N R 12 E

TYPE MONUMENT MAG/WASHER
 ON SURFACE - ~~BELOW~~ ON
 OFFSET 0.8' ± : RT
 TO EDGE PAVEMENT
 STATION: 340+49.09



HORZ. DATUM: NAD83 2011 GEOID: NAVD88 2018
 GRID: NORTHING: 635078.143 EASTING: 1690892.877

RECORD P.I.
 STA. 341+70.30
 $\Delta = 5^{\circ}40'20''$ LT
 SET AG/WASHER
 REF57
 10/11/11, RJL
 FD MAG/WASHER
 6/11/13, SDC
 SET MAG/WASHER
 FINREF57
 10/3/13, SDC
 FD MAG/WASHER
 8/19/22, DSA
 REF57
 3/2/23, DSA



O.D.O.T. DISTRICT 2 SURVEY OFFICE (USE ONLY)

PERSONNEL _____

REFERENCE NO. 57

SHEET 12 OF 33

NOTES HOMAN

DATE 6/11/13

ROUTE SR 105

H.C. HOMAN

WEATHER FAIR

COUNTY WOOD

R.C. CODER

TEMP. 65°

TOWNSHIP WEBSTER

SECTION 8

T 5 N R 12 E

TYPE MONUMENT MAG / WASHER

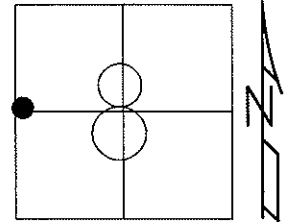
ON SURFACE - ~~BELOW~~ ON

~~LEFT~~ - Q PAV'T - RIGHT 0.8'

- TO - EDGE PAVEMENT

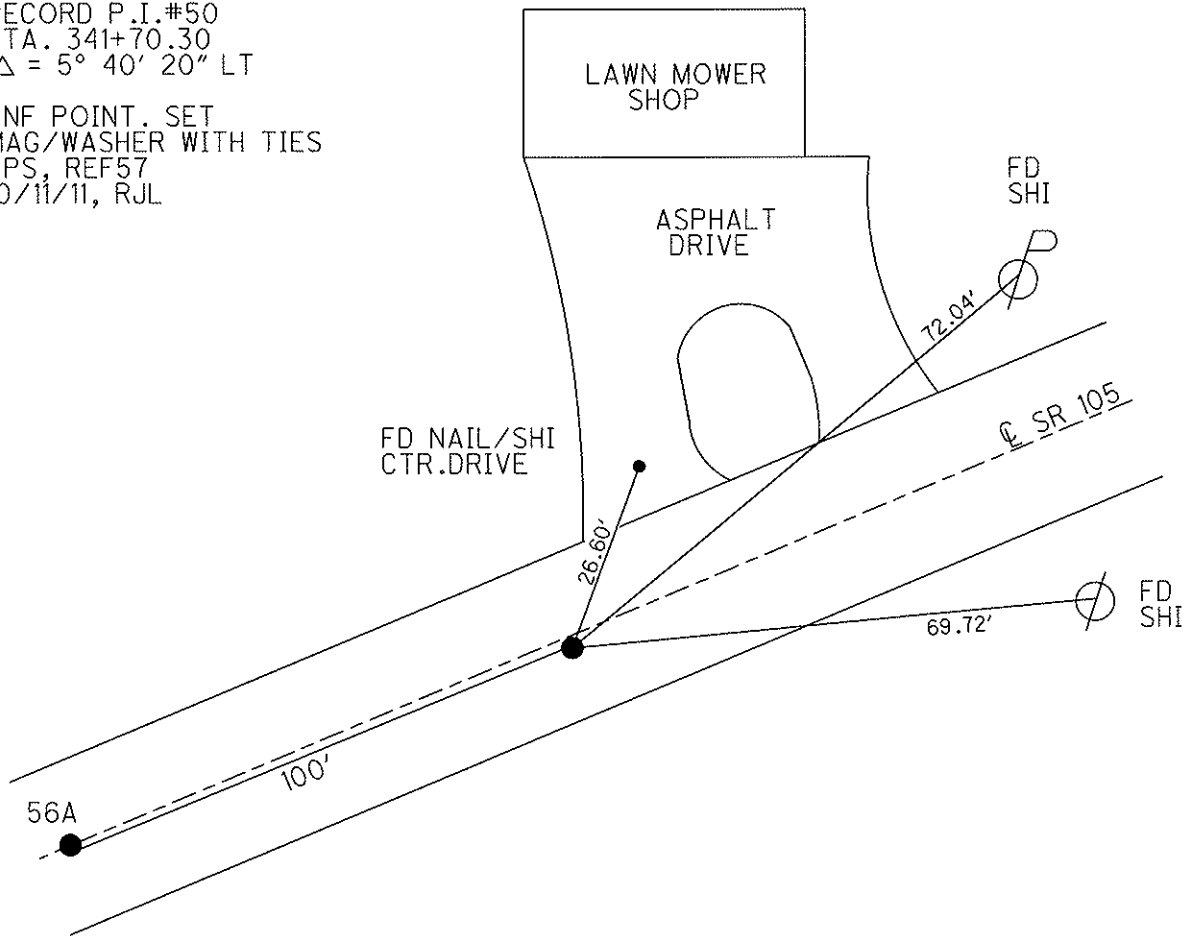
S.L.M. 341+70

Grid: Northing: 635078.235 Easting: 1690892.777



RECORD P.I.#50
STA. 341+70.30
 $\Delta = 5^{\circ} 40' 20''$ LT

DNF POINT. SET
MAG/WASHER WITH TIES
GPS, REF57
10/11/11, RJL



O.D.O.T. DISTRICT 2 SURVEY OFFICE

PERSONNEL

REFERENCE NO. 56 & 57

SHEET 6 OF 49

NOTES

CHANEY

H.C.

RIPPLE

R.C.

BARBOUR

DATE

8-1-94

WEATHER

FAIR

TEMP.

+82

ROUTE

S.R. 105

COUNTY

Wood

TOWNSHIP

WEBSTER

SECTION

8

T 5 N R 12 E

Reset 11-8-94

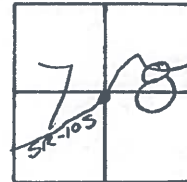
TYPE MONUMENT P.K Nails

ON SURFACE - BELOW Yes

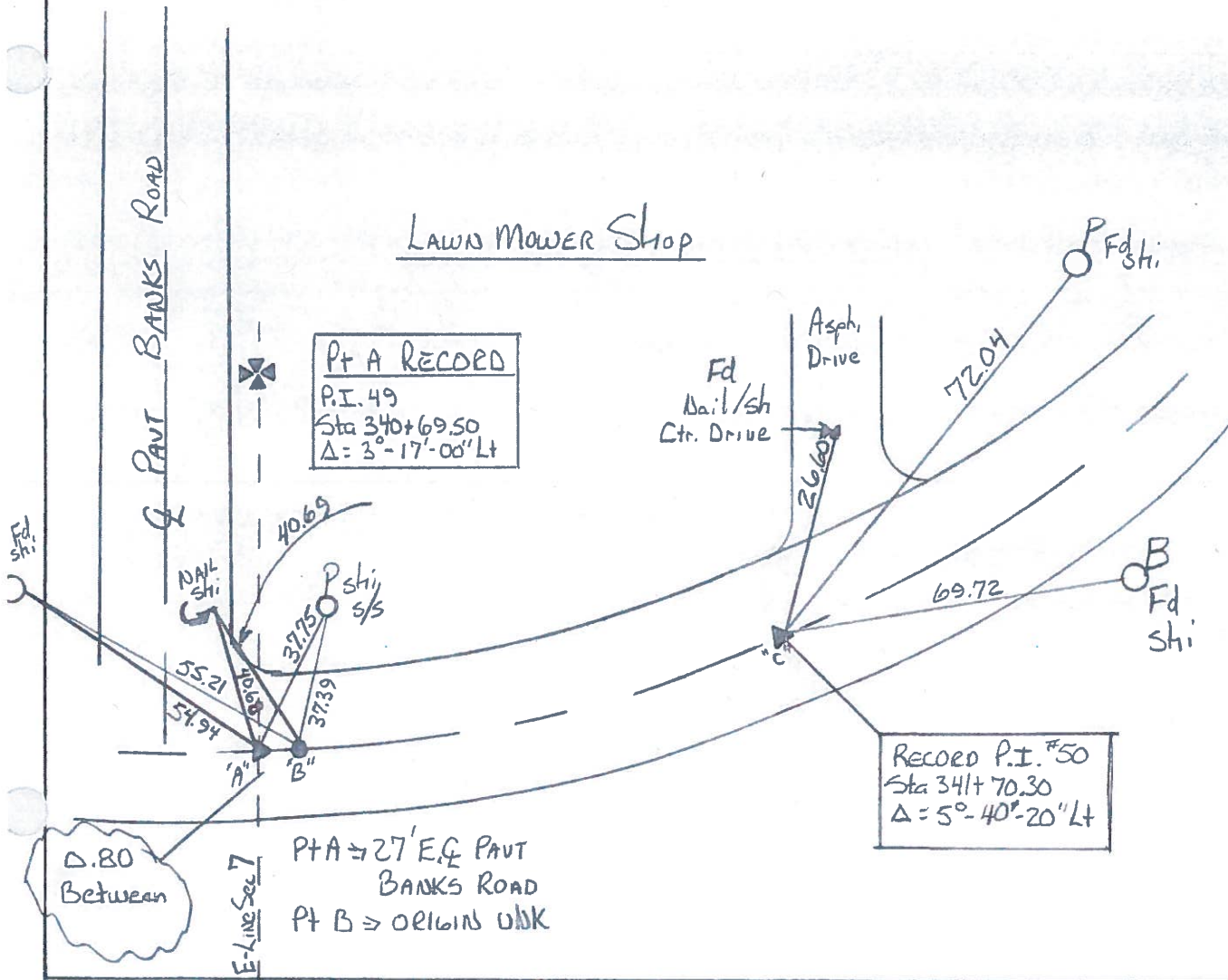
LEFT - € PAV'T. - RIGHT A&B ON € C 70.8' Rt

TO EDGE PAVEMENT

S.L.M. A=340+69 B=340+70 C=341+70



A: 56
B: 56A
C: 57



County WOOD S.R. 105

Township WEBSTER

Section 8

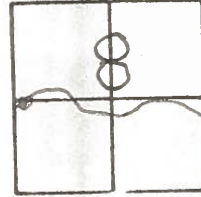
T5N, R12E

Personnel Hoffman
HOUSEHOLDER PC
BARNEY HC
LOCHAKE

Date 7-10-84

Weather CLEAR, HUMID

Temp. +92



57

RECORDED
P.I. # 50

341+70.30

Δ = 50'-40'-20" Lt.

SLM 340+35

SET PK
9-27-84

Fd. PK @ SURFACE

0.5 Lt of Q PAVT SR105

10.6 Lt EP

9.3 REP

± 130 E. of BANKS Rd

WHEELHORSE
DEALER

BANKS Rd



SE. COR. CONC.
PORCH

59.37

26.59

NAIL & SHI
& DRIVE
72.04

Shi SW/S

Q PAVT SR105

69.72

Set Shi
W/S

Q PAVT SR 105

County WOOD S.R. 105

Date OCT-16-73

Township WEBSTER

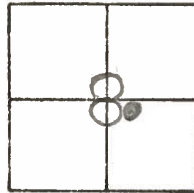
Weather cloudy

Section 8

Temp. 52°

T N, R E

Personnel STONE
MICHALAK
CURTIS
DENNO

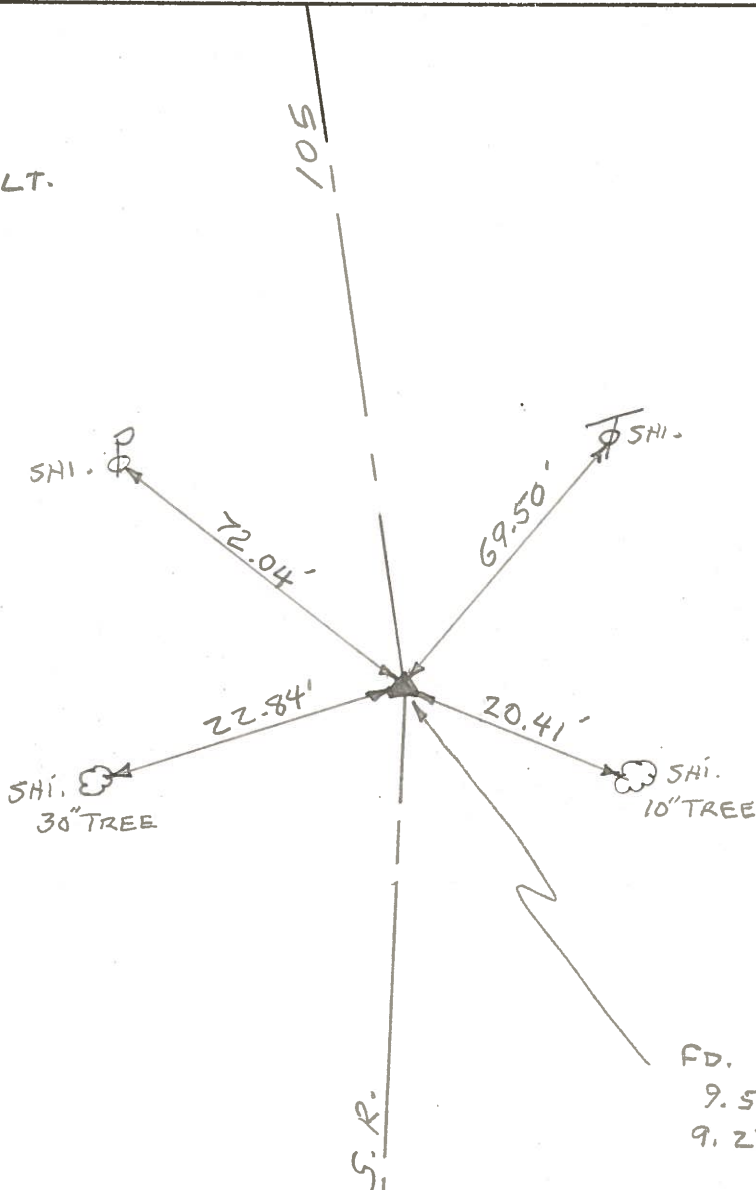


57

P.I. #50

341+70.30

$\Delta = 5^\circ - 40' - 20''$ LT.



FD. NAIL TO SURFACE.
 9.5' - TO N. EDGE PVT.
 9.2' - TO S. EDGE PVT.