

O.D.O.T. DISTRICT 2 SURVEY OFFICE

PERSONNEL \_\_\_\_\_

REFERENCE NO. 58-A

SHEET 9 OF 49

NOTES CHANEY

H.C. RIPPLE

R.C. BARBOUR

DATE 8-1-94

WEATHER FAIR

TEMP. + 80°

ROUTE S.R. 105

COUNTY WOOD

TOWNSHIP WEBSTER

SECTION 8

T. \_\_\_\_\_ R. \_\_\_\_\_

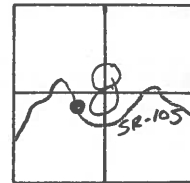
TYPE MONUMENT DID NOT FIND

ON SURFACE - BELOW \_\_\_\_\_

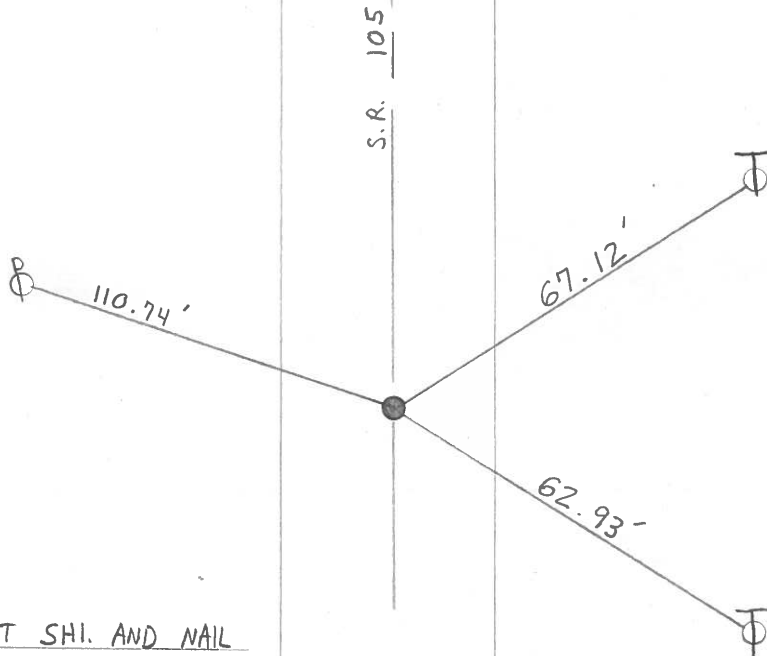
LEFT-~~C~~ PAV'T. - RIGHT Yes

7.1' TO N. EDGE PAVEMENT (Record)

S.L.M. 359+00



NOTE: ALL TIES HAVE BEEN  
REMOVED. DID NOT FIND POINT  
P.O.T. 359+00 (Record)



Record: SET SHI. AND NAIL  
7.1' - To N. EDGE PAVT.  
13.2 - To S. EDGE PAVT.  
Oct 1973

C PAVT.

ODOT. DISTRICT 2 SURVEY OFFICE

SHEET \_\_\_\_\_ OF \_\_\_\_\_

County WOOD S.R. 105

Date OCT.-31-73

Township WEBSTER

Weather CLOUDY

Section 8

Temp. 45°

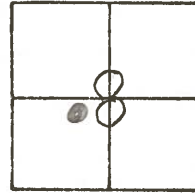
T\_N, R\_E

Personnel STONE

MICHALAK

CURTIS

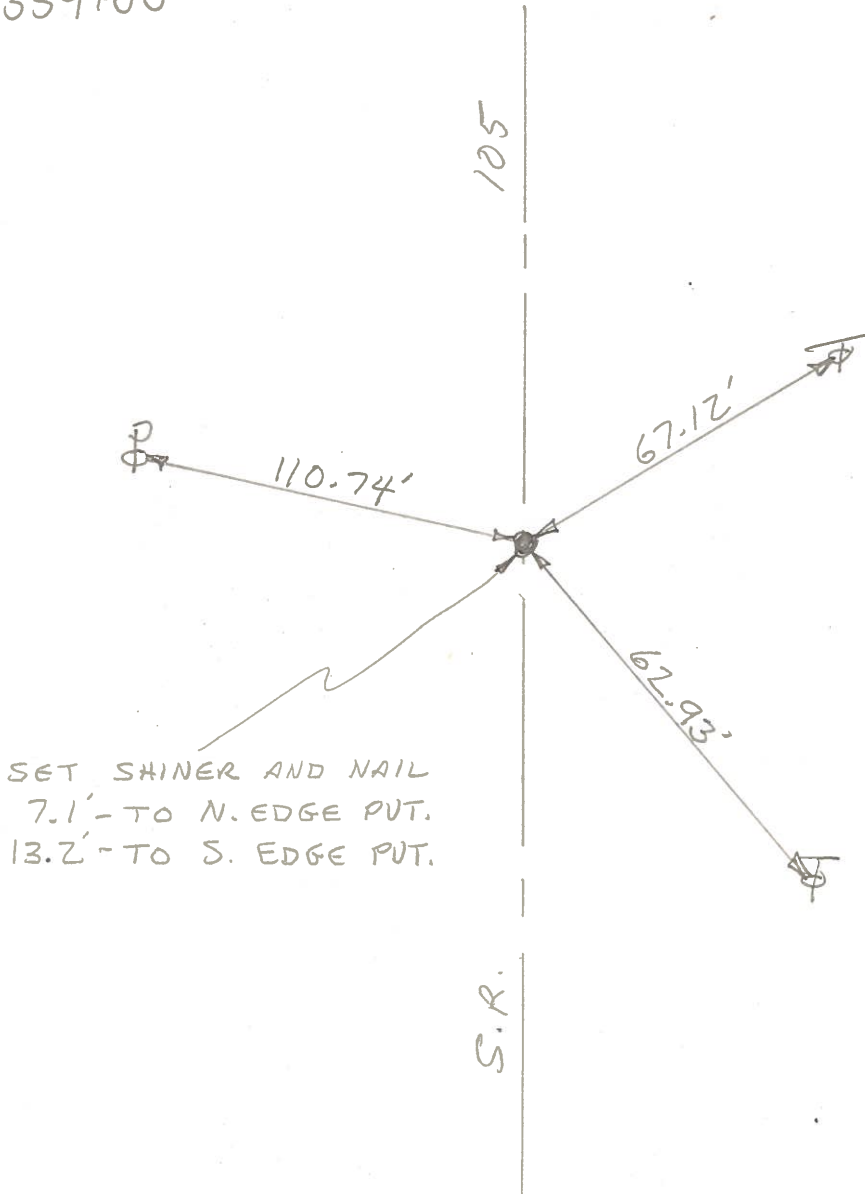
DENNO



# 58-A

P.O.T. 359+00

DID NOT FIND



SET SHINER AND NAIL  
7.1' - TO N. EDGE PVT.  
13.2' - TO S. EDGE PVT.