

O.D.O.T. DISTRICT 2 SURVEY OFFICE (USE ONLY)

PERSONNEL

REFERENCE NO. 59 A

SHEET 16 OF 33

NOTES RHOADES

DATE 8/18/22

ROUTE SR 105

H.C. AUBLE

WEATHER SUNNY

COUNTY WOOD

R.C. NIESE

TEMP. 80°

TOWNSHIP WEBSTER

DWG BY RHOADES

PID PAVETRAIN

SECTION 8

T 5 N R 12 E

TYPE MONUMENT P.K./WASHER

ON SURFACE - ~~BELOW~~ ON

OFFSET  $\varnothing$  PAVEMENT 0.9' ~~±~~ : RT

9.8' TO RT EDGE PAVEMENT

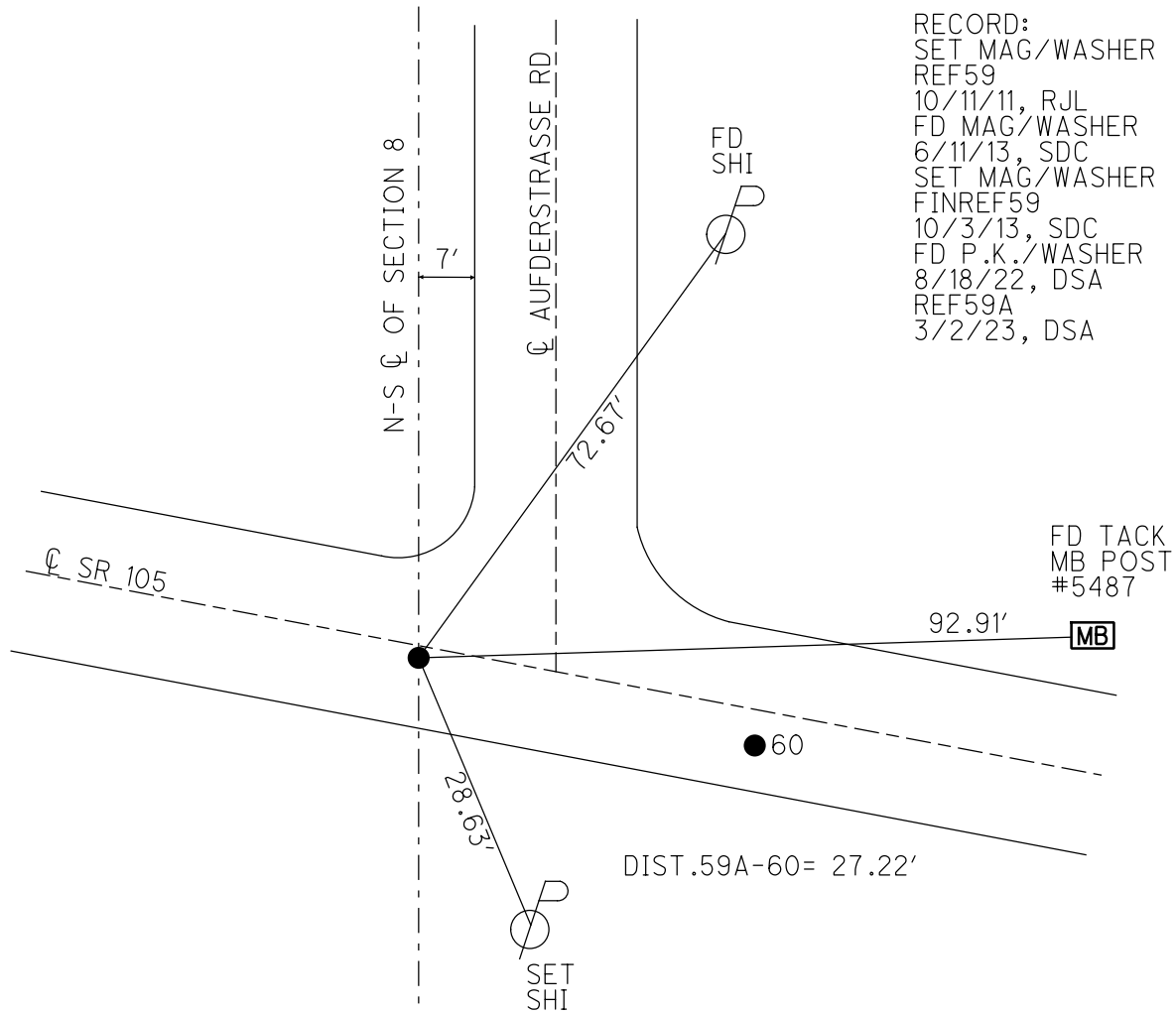
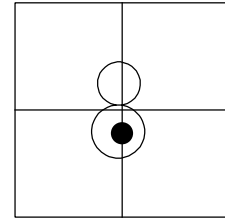
STATION: 370+16.74

HORZ.DATUM: NAD83 2011

GEOID: NAVD88 2018

GRID: NORTHING: 634847.104

EASTING: 1693442.746



RECORD:  
 SET MAG/WASHER  
 REF59  
 10/11/11, RJL  
 FD MAG/WASHER  
 6/11/13, SDC  
 SET MAG/WASHER  
 FINREF59  
 10/3/13, SDC  
 FD P.K./WASHER  
 8/18/22, DSA  
 REF59A  
 3/2/23, DSA

FD TACK  
 MB POST  
 #5487

O.D.O.T. DISTRICT 2 SURVEY OFFICE (USE ONLY)

PERSONNEL \_\_\_\_\_

REFERENCE NO. 59 A

SHEET 16 OF 33

NOTES HOMAN

DATE 6/11/13

ROUTE SR 105

H.C. HOMAN

WEATHER FAIR

COUNTY WOOD

R.C. CODER

TEMP. 65°

TOWNSHIP WEBSTER

SECTION 8

T 5 N R 12 E

TYPE MONUMENT MAG / WASHER

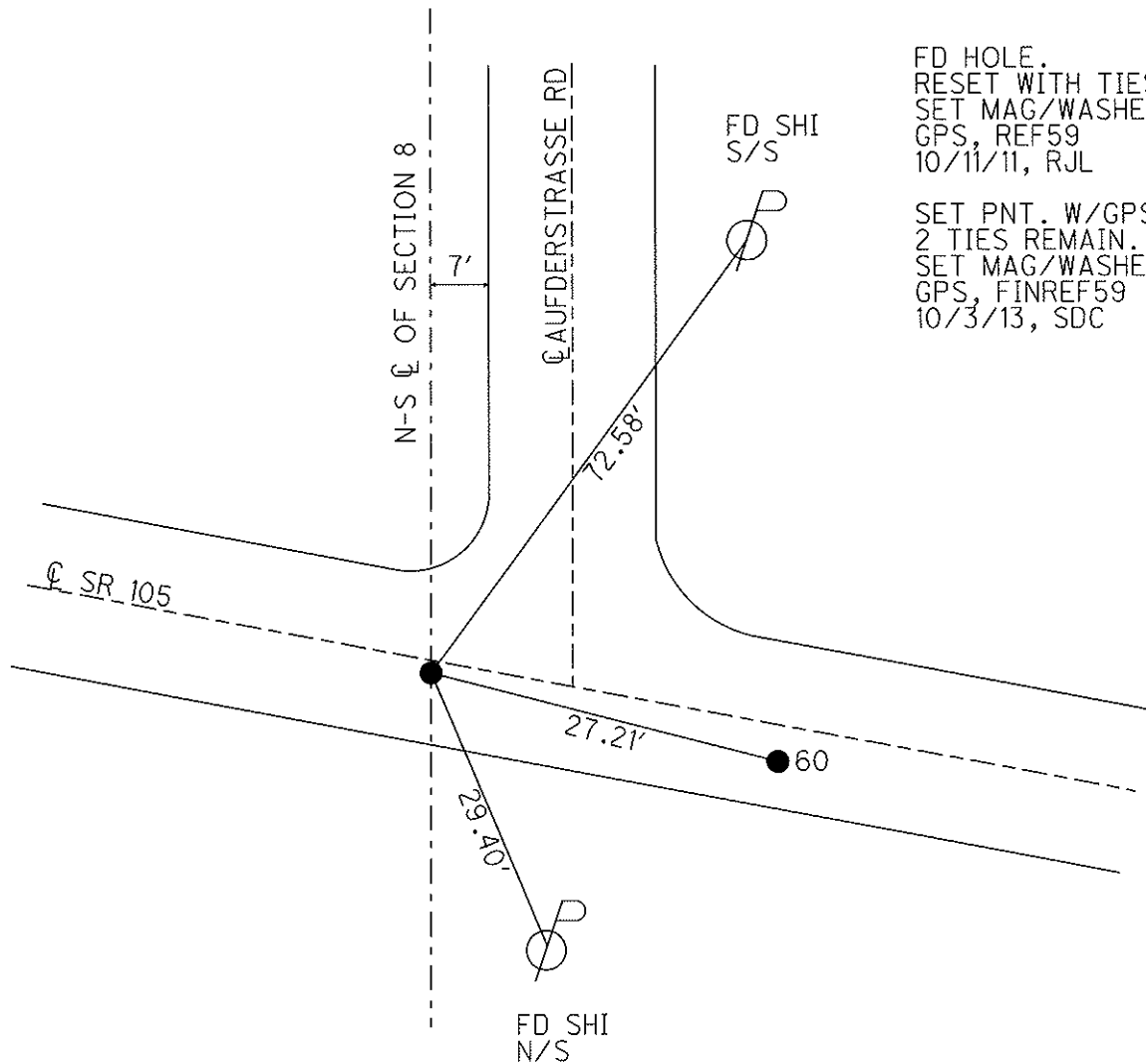
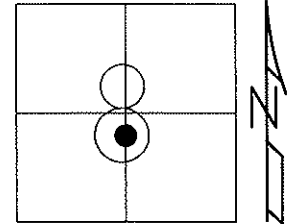
~~ON SURFACE~~ - BELOW ON

~~LEFT~~ - CL PAV'T - RIGHT 0.9'

9.8' TO RT EDGE PAVEMENT

S.L.M. 371+71

Grid: Northing: 634847.178 Easting: 1693442.643



FD HOLE.  
 RESET WITH TIES  
 SET MAG/WASHER  
 GPS, REF59  
 10/11/11, RJL

SET PNT. W/GPS,  
 2 TIES REMAIN.  
 SET MAG/WASHER  
 GPS, FINREF59  
 10/3/13, SDC

# O.D.O.T. DISTRICT 2 SURVEY OFFICE

PERSONNEL \_\_\_\_\_

REFERENCE NO. 59A

SHEET 11 OF 49

NOTES CHANEY

H.C. RIPPLE

R.C. BARBOUR

DATE 8-1-94

WEATHER FAIR

TEMP. +80°

ROUTE S.R. 105

COUNTY WOOD

TOWNSHIP WEBSTER

SECTION 8

T. 5 N R. 12 E

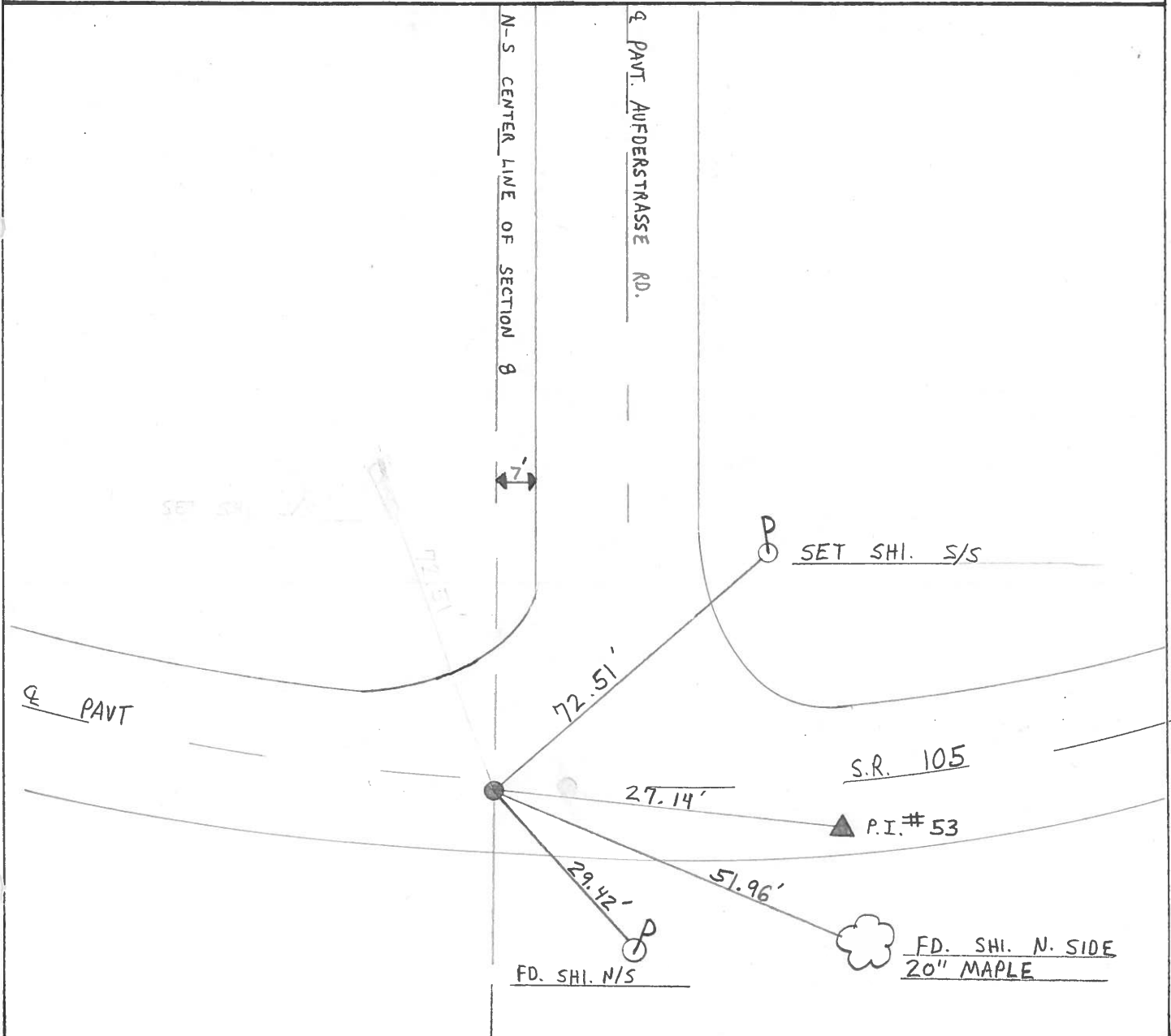
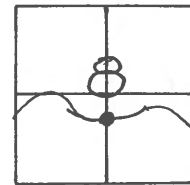
TYPE MONUMENT SET P.K./WASHER

ON SURFACE - ~~BELOW~~ Yes

~~LEFT - & PAV'T. - RIGHT~~ 0.9'

9.8 TO RT. EDGE PAVEMENT

S.L.M. 371 + 71



# O.D.O.T. DISTRICT 2 SURVEY OFFICE

PERSONNEL \_\_\_\_\_

REFERENCE NO. 59A

SHEET \_\_\_\_\_ OF \_\_\_\_\_

NOTES HOFFMAN

H.C. BARNHISEL

R.C. \_\_\_\_\_

DATE 6-1-89

WEATHER OVERCAST

TEMP. 75°

ROUTE SR 105

COUNTY WOOD

TOWNSHIP WEBSTER

SECTION 8

T. 5 N. R. 12 E.

TYPE MONUMENT SET P.K. / WASHER

ON SURFACE - BELOW YES

~~LEFT - C~~ PAV'T. - RIGHT 1.3

8.6 TO RT. EDGE PAVEMENT

S.L.M. \_\_\_\_\_

