

O.D.O.T. DISTRICT 2 SURVEY OFFICE (USE ONLY)

PERSONNEL

REFERENCE NO. 61

SHEET 18 OF 33

NOTES HOMAN

DATE 8/18/22

ROUTE SR 105

H.C. HOMAN

WEATHER SUNNY

COUNTY WOOD

R.C. CODER

TEMP. 80°

TOWNSHIP WEBSTER

SECTION 8

DWG BY RHOADES

PID PAVETRAIN

T 5 N R 12 E

TYPE MONUMENT 1 1/4" IPIPE

~~ON SURFACE~~ - BELOW 1"

OFFSET  $\text{C}$  PAVEMENT 20.8' ~~±~~ : RT

9.9' TO RT EDGE PAVEMENT

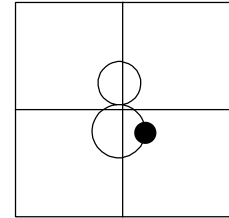
STATION: 374+95.76

HORZ. DATUM: NAD83

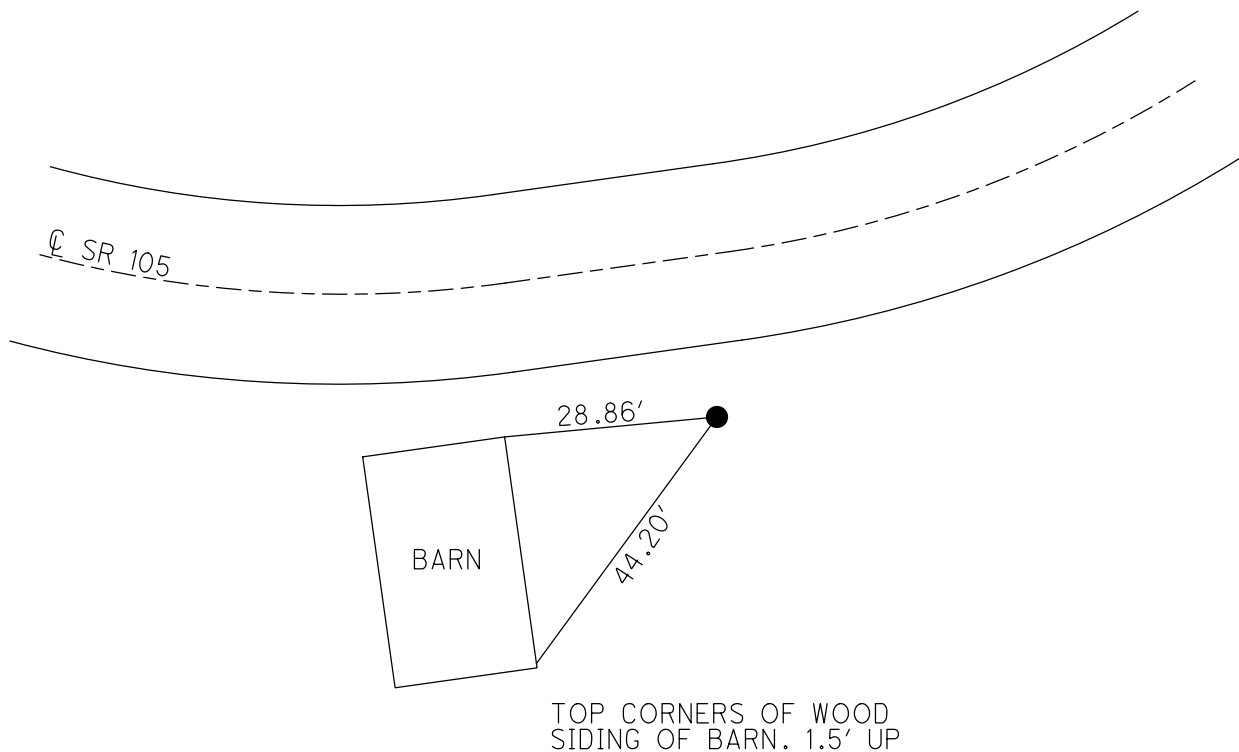
GEOID: NAVD88 2009

GRID: NORTHING: 634802.215

EASTING: 1693919.138



RECORD: P.I.  
STA. = 378+14.44  
 $\Delta = 29^{\circ}49'20''$  LT  
FD 1 1/4" IPIPE  
REF61  
10/11/11, RJL



O.D.O.T. DISTRICT 2 SURVEY OFFICE (USE ONLY)

PERSONNEL

REFERENCE NO. 61

SHEET 18 OF 33

NOTES HOMAN

DATE 6/11/13

ROUTE SR 105

H.C. HOMAN

WEATHER FAIR

COUNTY WOOD

R.C. CODER

TEMP. 65°

TOWNSHIP WEBSTER

SECTION 8

T 5 N R 12 E

TYPE MONUMENT 1 1/4" IPIPE

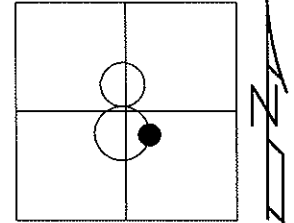
~~ON SURFACE~~ - BELOW 1"

~~LEFT~~ - Q PAV'T - RIGHT 20.8'

9.9' TO RT EDGE PAVEMENT

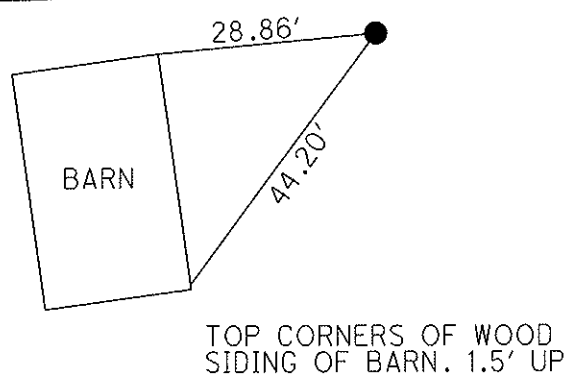
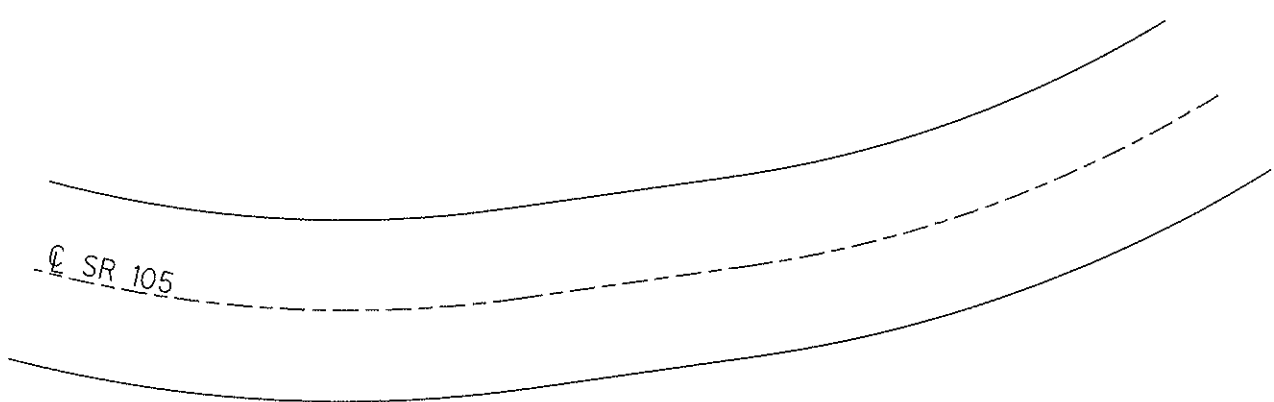
S.L.M. 376+48

Grid: Northing: 634802.215 Easting: 1693919.138



RECORD: P.I. #54  
STA. = 378+14.44  
 $\Delta = 29^\circ 49' 20''$  LT

FD 1 1/4" IPIPE  
GPS, REF61  
10/11/11, RJL



# O.D.O.T. DISTRICT 2 SURVEY OFFICE

PERSONNEL

REFERENCE NO. #61

SHEET 13 OF 49

NOTES CHANEY

H.C. RIPPLE

R.C. BARBOUR

DATE 8-1-94

WEATHER FAIR

TEMP. +80°

ROUTE S.R. 105

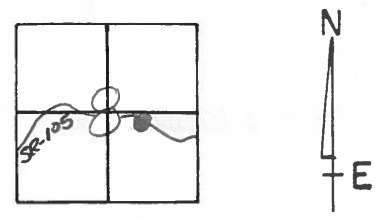
COUNTY WOOD

TOWNSHIP WEBSTER

SECTION 8

T     R    

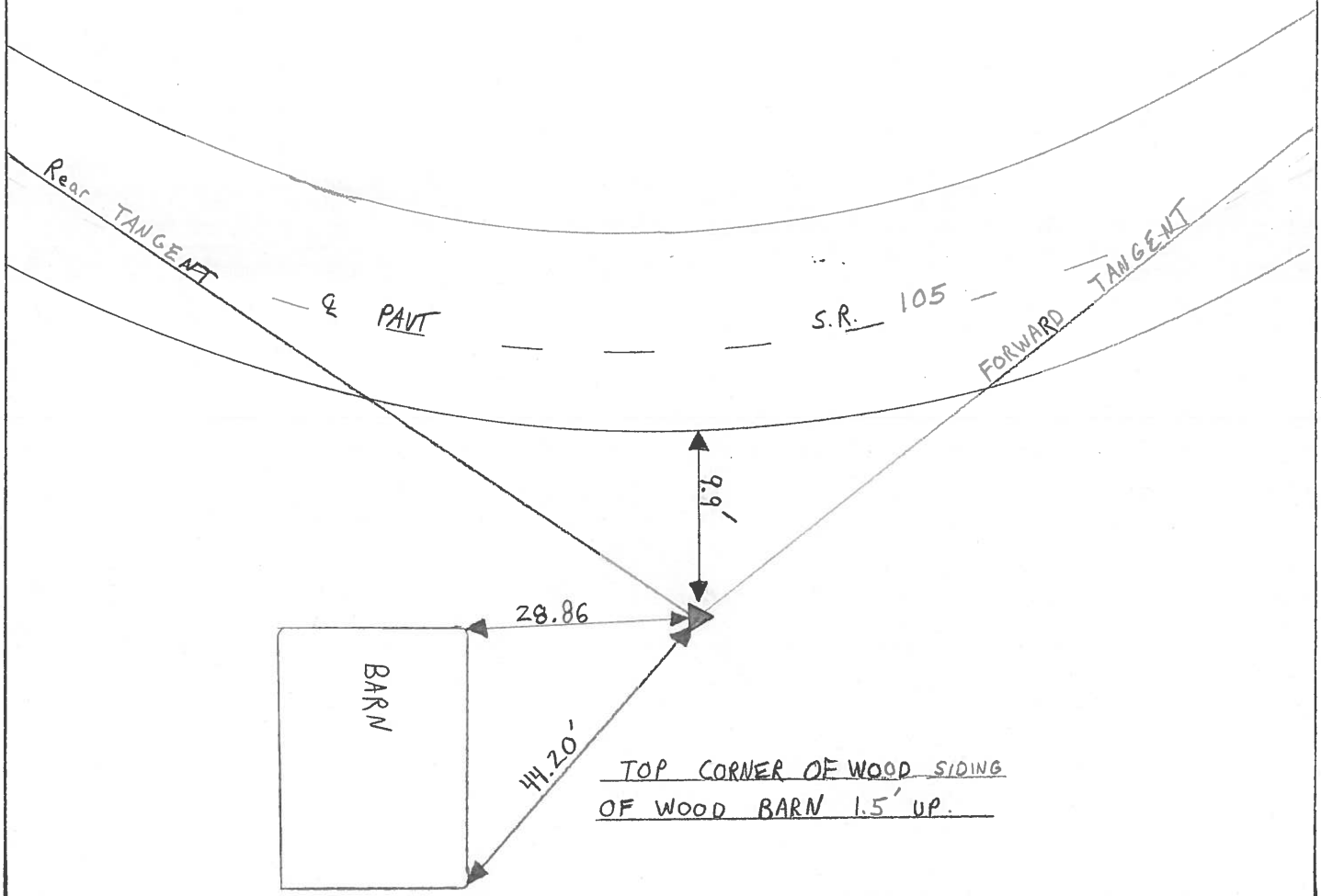
TYPE MONUMENT 1/4" IRON ROD  
 ON SURFACE - BELOW 1" BELOW  
 LEFT - ~~Q~~ PAV'T. - RIGHT Yes 20.8' RT &  
9.9' TO RT EDGE PAVEMENT  
 S.L.M. 376+48



RECORD : P.I. # 54

STA - 378 + 14.44

$\Delta = 29^\circ - 49' - 20''$  LT.



County WOOD S.R. 105

Date OCT-31-73

Township WEBSTER

Weather CLOUDY

Section 8

Temp. 50°

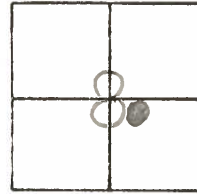
T N, R E

Personnel STONE

MICHALAK

CURTIS

DENNO



#61  
 P.I. #54  
 378+14.44  
 A = 29°-49'-20" LT.

