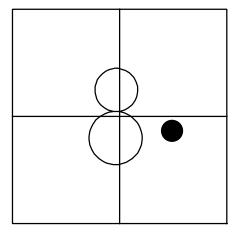


O.D.O.T. DISTRICT 2 SURVEY OFFICE (USE ONLY)

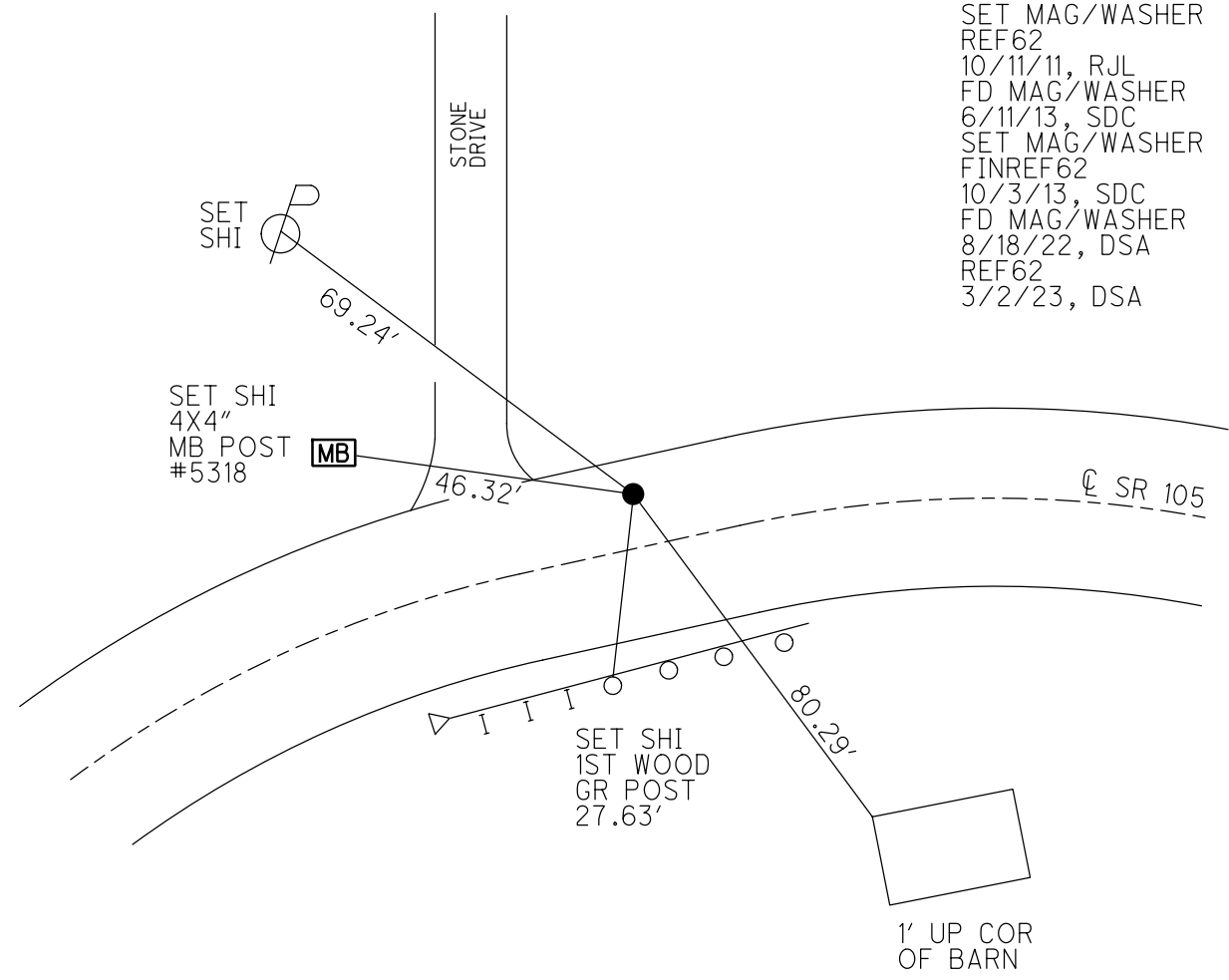
PERSONNEL _____ REFERENCE NO. 62 SHEET 19 OF 33
 NOTES RHOADES DATE 8/18/22 ROUTE SR 105
 H.C. AUBLE WEATHER SUNNY COUNTY WOOD
 R.C. NIESE TEMP. 80° TOWNSHIP WEBSTER
 DWG BY RHOADES PID PAVETRAN SECTION 8
 T 5 N R 12 E

TYPE MONUMENT MAG/WASHER
 ON SURFACE - ~~BELOW~~ ON
 OFFSET \varnothing PAVEMENT 6' LT : ~~RT~~
3.5' TO LT EDGE PAVEMENT
 STATION: 381+06.64

HORIZ.DATUM: NAD83 2011 GEOID: NAVD88 2018
 GRID: NORTHING: 635061.156 EASTING: 1694472.435



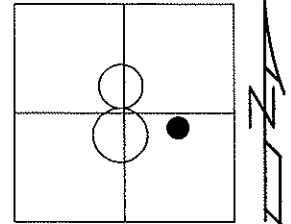
RECORD: P.I.
 STA.= 384+25.55
 Δ = 21°00' 00" RT
 SET MAG/WASHER
 REF62
 10/11/11, RJL
 FD MAG/WASHER
 6/11/13, SDC
 SET MAG/WASHER
 FINREF62
 10/3/13, SDC
 FD MAG/WASHER
 8/18/22, DSA
 REF62
 3/2/23, DSA



O.D.O.T. DISTRICT 2 SURVEY OFFICE (USE ONLY)

PERSONNEL	REFERENCE NO. <u>62</u>	SHEET <u>19</u> OF <u>33</u>
NOTES <u>HOMAN</u>	DATE <u>6/11/13</u>	ROUTE <u>SR 105</u>
H.C. <u>HOMAN</u>	WEATHER <u>FAIR</u>	COUNTY <u>WOOD</u>
R.C. <u>CODER</u>	TEMP. <u>65°</u>	TOWNSHIP <u>WEBSTER</u>
		SECTION <u>8</u>
		T <u>5</u> N R <u>12</u> E

TYPE MONUMENT MAG / WASHER
 ON SURFACE - ~~BELOW~~ ON
 LEFT - ℄ PAV'T - ~~RIGHT~~ 6.0'
3.5' TO LT EDGE PAVEMENT
 S.L.M. 382+55

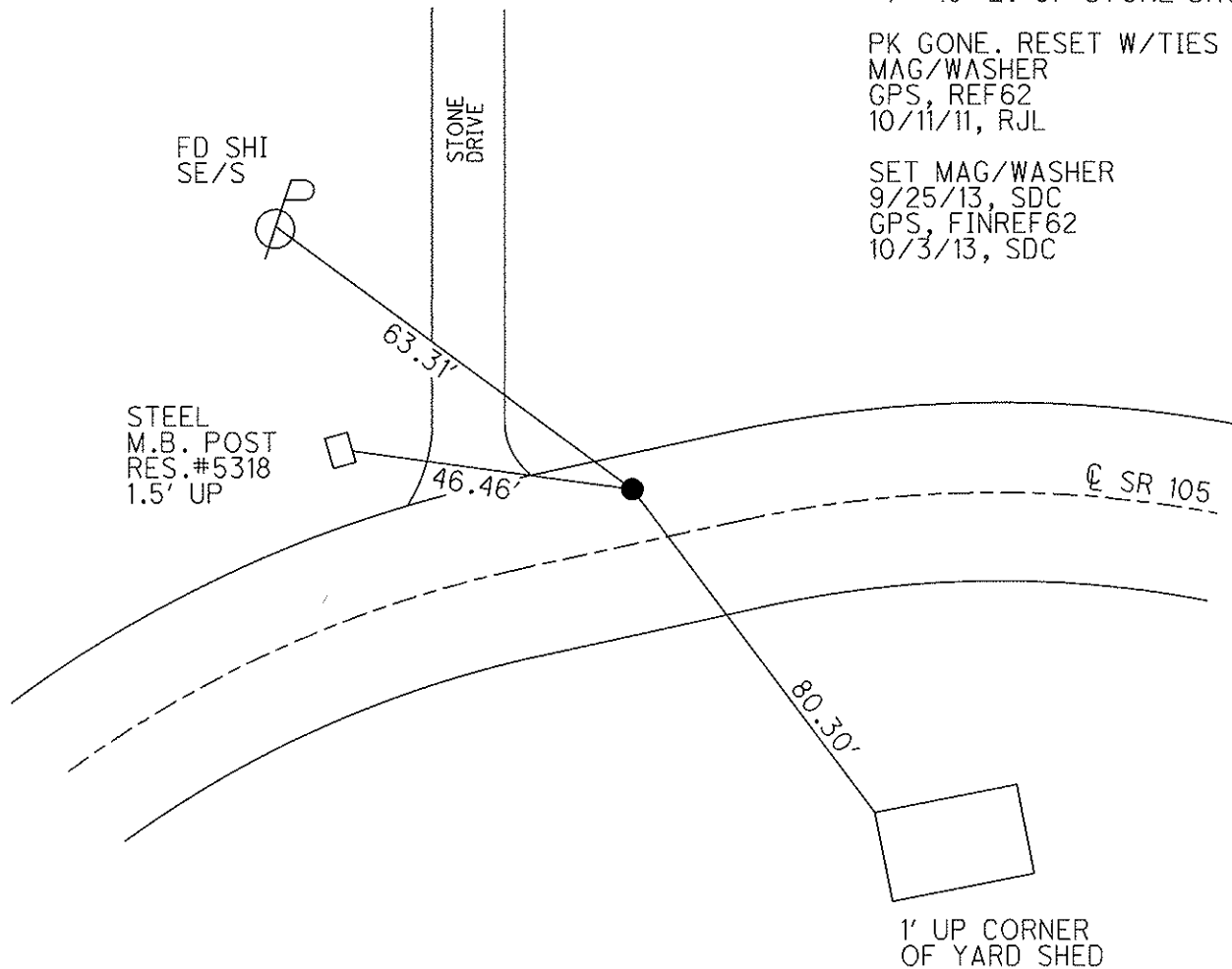


Grid: Northing: 635061.207 Easting: 1694472.445

RECORD: P.I. #55
 STA. = 384+25.55
 $\Delta = 21^\circ 00' 00''$ RT
 +/- 10' E. OF STONE DR.

PK GONE. RESET W/TIES
 MAG/WASHER
 GPS, REF62
 10/11/11, RJL

SET MAG/WASHER
 9/25/13, SDC
 GPS, FINREF62
 10/3/13, SDC



O.D.O.T. DISTRICT 2 SURVEY OFFICE

PERSONNEL _____

REFERENCE NO. # 62

SHEET 14 OF 49

NOTES CHANEY

H.C. RIPPLE

R.C. BARBOUR

DATE 8-1-94

WEATHER FAIR

TEMP. +80°

ROUTE S.R. 105

COUNTY WOOD

TOWNSHIP WEBSTER

SECTION 8

T 5 N R 12 E

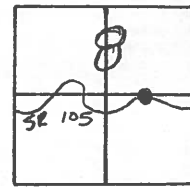
TYPE MONUMENT PK/WASHER

ON SURFACE - ~~BELOW~~ Yes

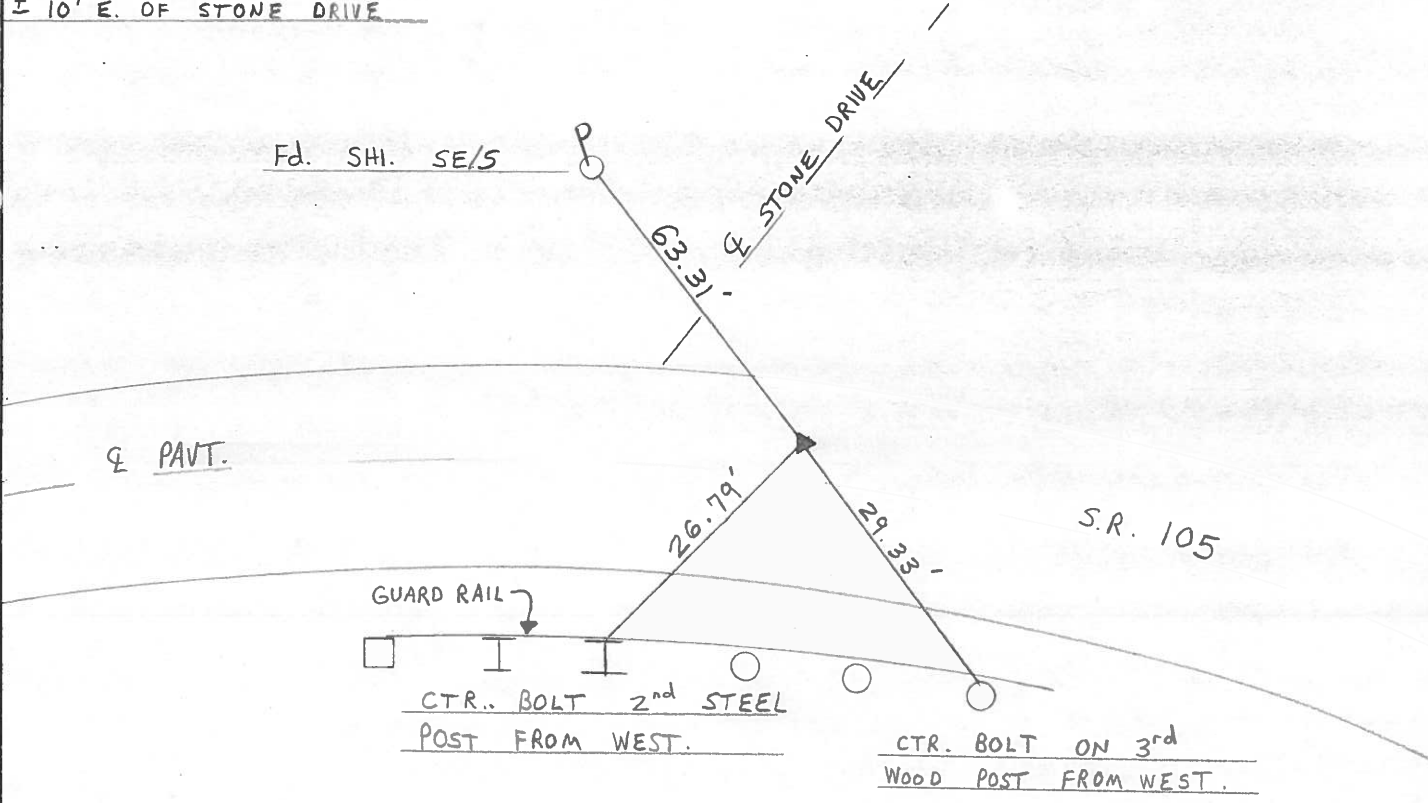
LEFT - ~~E~~ PAV'T. - RIGHT Yes 6' LT. &

3.5 TO LT EDGE PAVEMENT

S.L.M. 382 + 55



RECORD: PI. # 55
 STA - 384 + 25.55
 $\Delta = 21^{\circ} - 00' - 00''$ RT.
± 10' E. OF STONE DRIVE



County WOOD S.R. 105

Township WEBSTER

Section 8

T&N, R1&E

Personnel BARNHISEL HC

HOUSEHOLDER RC

LOEHRKE LD

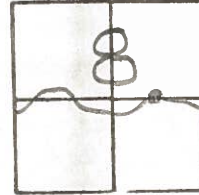
HOFFMAN P

62

Date 8-8-84

Weather CLEAR, HUMID

Temp. +85



RECORDED

P.I. # 55

384+25.55

$\Delta = 210^{\circ}-00'-00''$ RT,

Fd. Sm RR Spike 1" Below

6.7 to LEP

18.7 REP

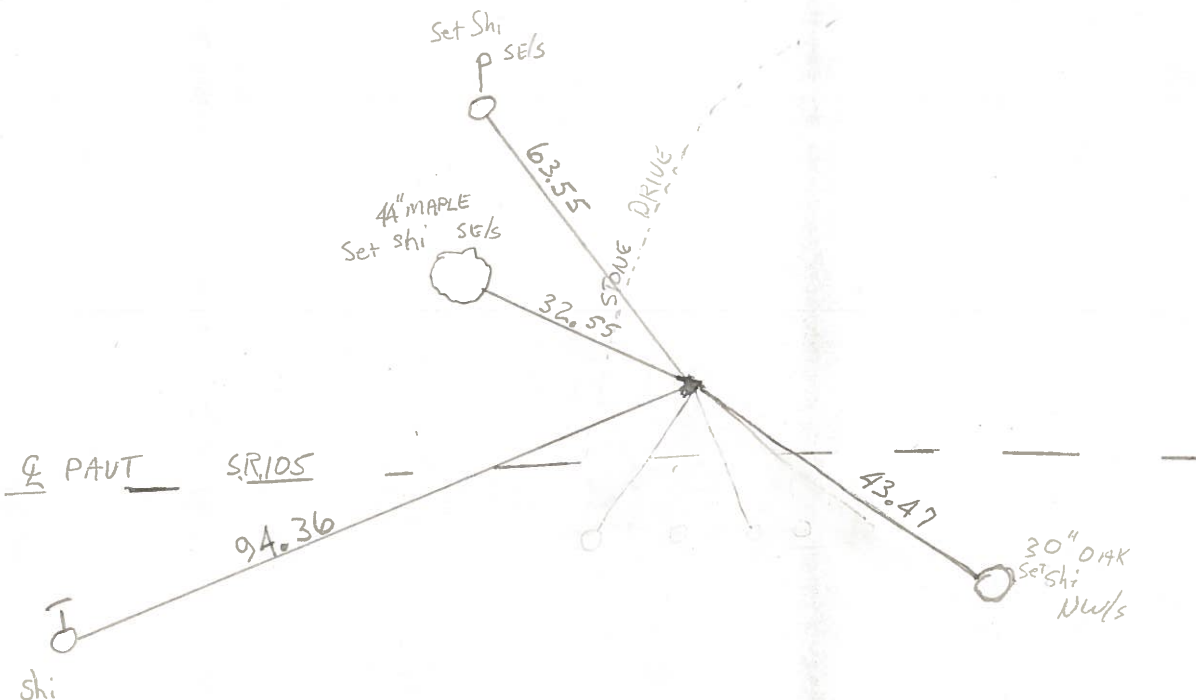
8.7 RE to PAVT SR 105

110 E of & STONE DRIVE

SET PK + WASHER

10-3-84

C.L.



County WOOD S.R. 105

Date OCT-31-73

Township WEBSTER

Weather CLOUDY

Section 8

Temp. 50°

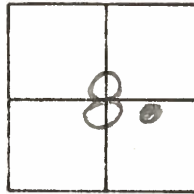
T N, R E

Personnel STONE

MICHALAK

CURTIS

DENNO

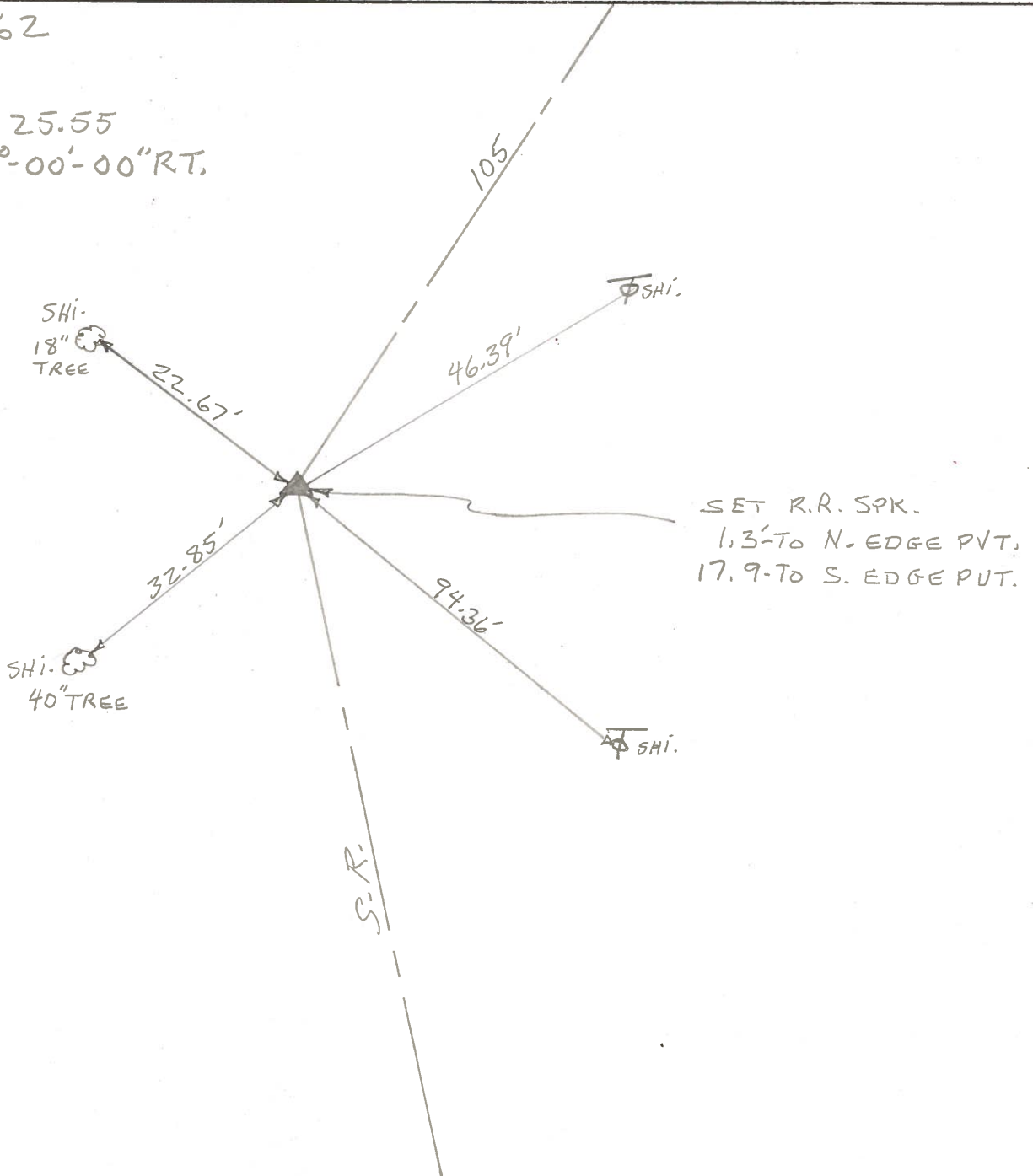


#62

P.I. #55

384+25.55

A = 21°-00'-00" RT.



SET R.R. SPK.
1.3'-TO N-EDGE PVT.
17.9'-TO S. EDGE PUT.