

O.D.O.T. DISTRICT 2 SURVEY OFFICE (USE ONLY)

PERSONNEL

REFERENCE NO. 66 A

SHEET 24 OF 33

NOTES RHOADES

DATE 8/18/22

ROUTE SR 105

H.C. AUBLE

WEATHER SUNNY

COUNTY WOOD

R.C. NIESE

TEMP. 74°

TOWNSHIP WEBSTER

SECTION 8

DWG BY RHOADES

PID PAVETRAIN

T 5 N R 12 E

TYPE MONUMENT MAG/WASHER

ON SURFACE - ~~BELOW~~ ON

OFFSET \varnothing PAVEMENT 0.5' ~~±~~ : RT

10.5' TO RT EDGE PAVEMENT

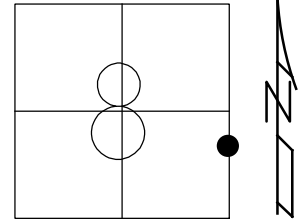
STATION: 398+85.56

HORZ. DATUM: NAD83 2011

GEOID: NAVD88 2018

GRID: NORTHING: 634473.502

EASTING: 1696041.612



E 1/4 COR. SEC. 8
768.06' TO REF.66A

SEC. 8
SEC. 9

\varnothing LUCKY RD

SET MAG/WASHER
REF A66
10/20/11, RJL
SET MAG/WASHER
FINREF A66
10/3/13, SDC
FD MAG/WASHER
8/18/22, DSA
REF 66A
3/2/23, DSA

SET
SHI

124.39'

FD
SHI

42.90'

58.58'

FD
SHI

\varnothing SR 105

SET
SHI

110.78'

68.45'

1 STORY RES.
COR. FDN. 6TH
BRICK UP

● 67

DIST. 66A-67 = 67.23' REC

S.E. COR. SEC. 8
1872.60' TO REF 66A

O.D.O.T. DISTRICT 2 SURVEY OFFICE (USE ONLY)

PERSONNEL _____

REFERENCE NO. 66 A

SHEET 24 OF 33

NOTES HOMAN

DATE 6/11/13

ROUTE SR 105

H.C. HOMAN

WEATHER PT.CLDY.

COUNTY WOOD

R.C. CODER

TEMP. 84°

TOWNSHIP WEBSTER

SECTION 8

T 5 N R 12 E

TYPE MONUMENT MAG / WASHER

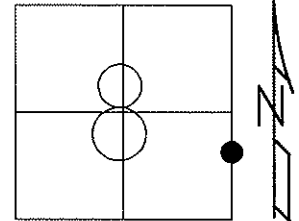
~~ON SURFACE~~ - BELOW ON

~~LEFT~~ - Q PAV'T - RIGHT 0.5'

10.5' TO RT EDGE PAVEMENT

S.L.M. 400+91

Grid: Northing: 634473.490 Easting: 1696041.551

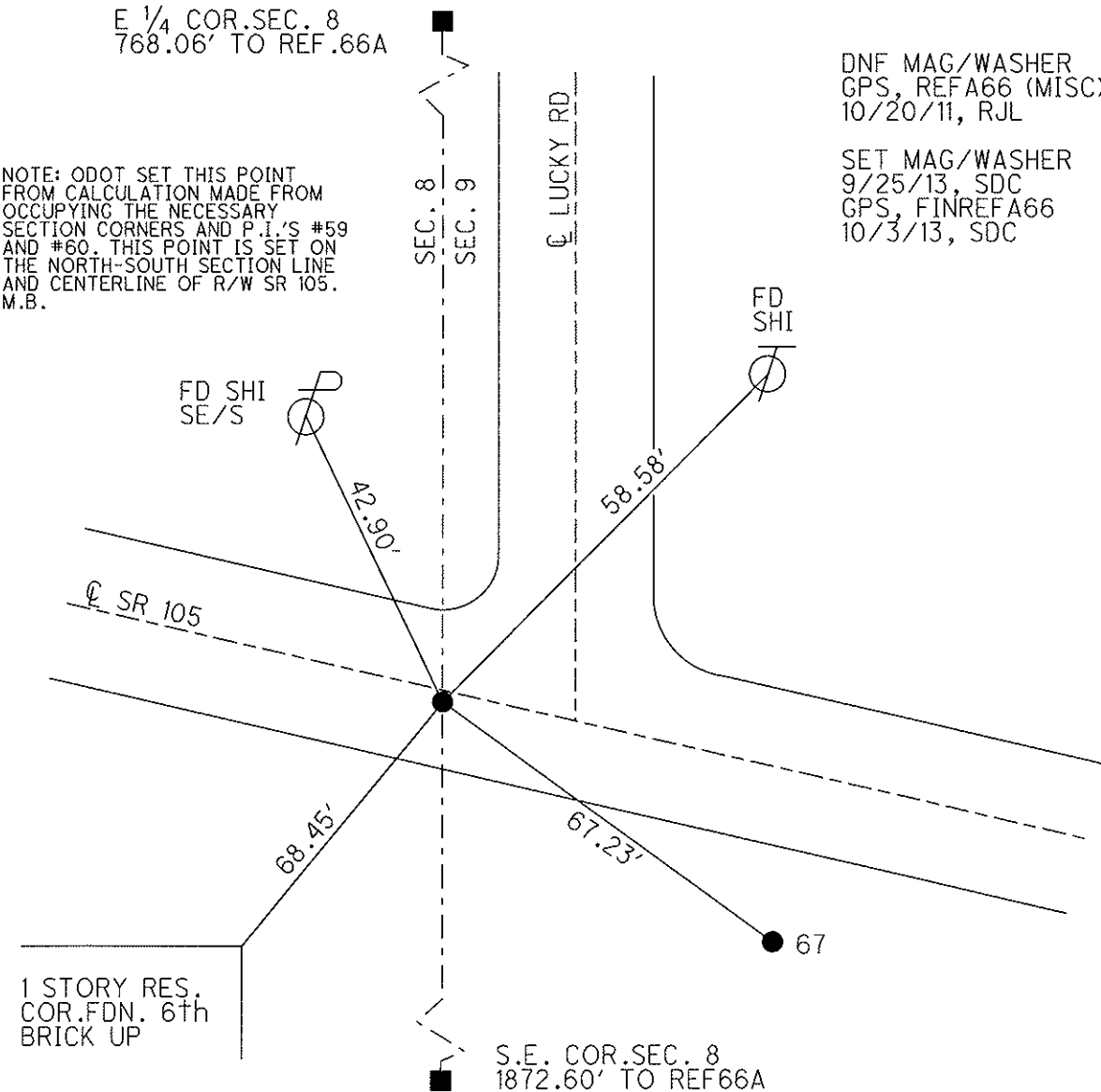


E 1/4 COR. SEC. 8
768.06' TO REF.66A

NOTE: ODOT SET THIS POINT FROM CALCULATION MADE FROM OCCUPYING THE NECESSARY SECTION CORNERS AND P.I.'S #59 AND #60. THIS POINT IS SET ON THE NORTH-SOUTH SECTION LINE AND CENTERLINE OF R/W SR 105. M.B.

DNF MAG/WASHER
GPS, REFA66 (MISC)
10/20/11, RJL

SET MAG/WASHER
9/25/13, SDC
GPS, FINREFA66
10/3/13, SDC



O.D.O.T. DISTRICT 2 SURVEY OFFICE

PERSONNEL

REFERENCE NO. 66-A

SHEET 19 OF 49

NOTES CANTERBURY

DATE 01/10/07

ROUTE S.R. 105

H.C. HUSS

WEATHER CLEAR

COUNTY WOOD

R.C. SAPP

TEMP. +35°

TOWNSHIP WEBSTER

SECTION 8

T 5 N R 12 E

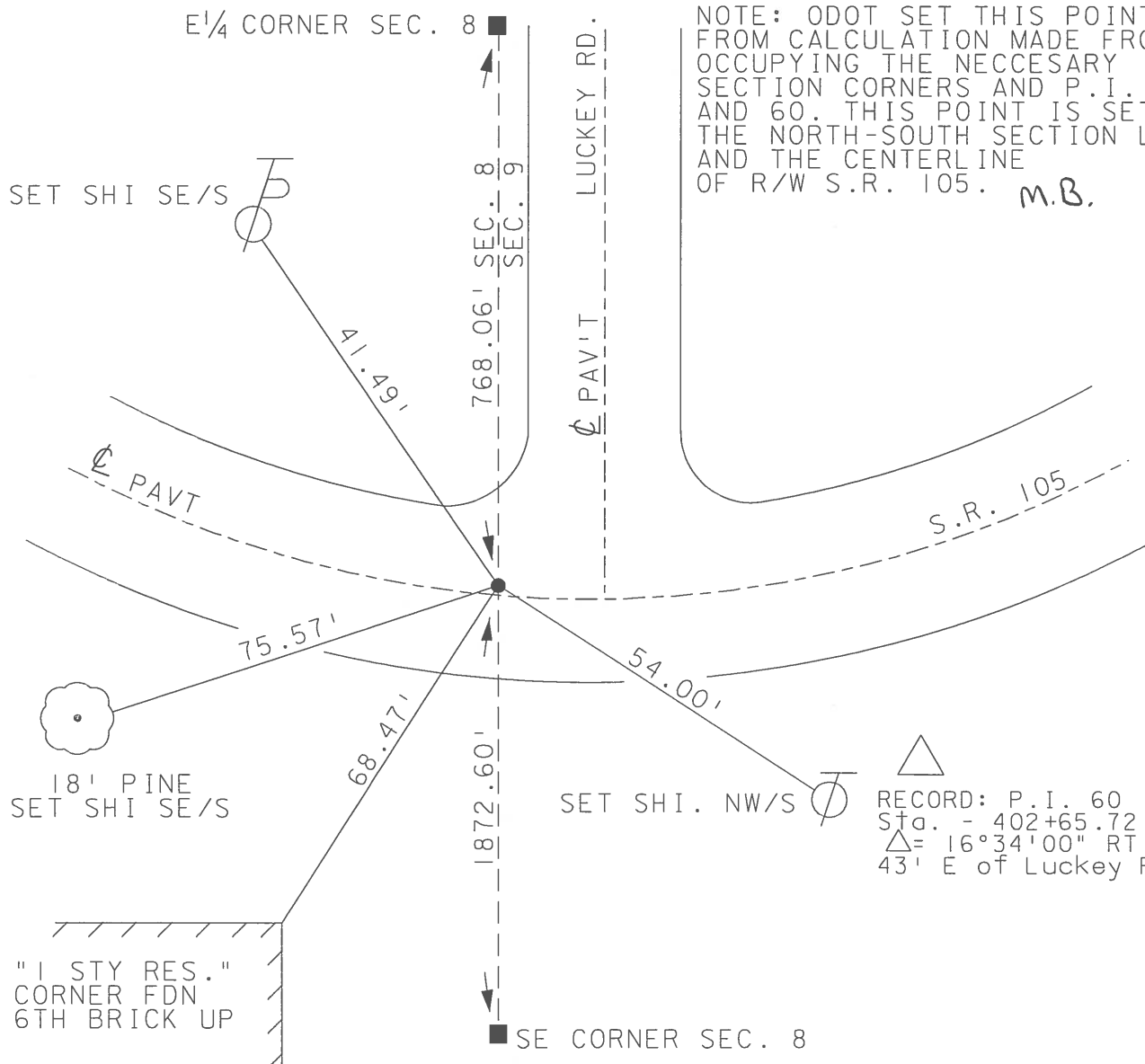
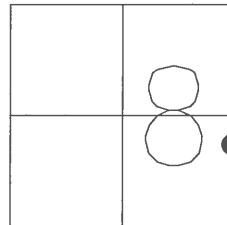
TYPE MONUMENT PT EST. MAG NAIL & WASHER

ON SURFACE - ~~BELOW~~ YES

LEFT - Q PAV'T ~~RIGHT~~ 1.0'

10.8' TO RT. EDGE PAVEMENT

S.L.M. 400+91



NOTE: ODOT SET THIS POINT FROM CALCULATION MADE FROM OCCUPYING THE NECESSARY SECTION CORNERS AND P.I. 59 AND 60. THIS POINT IS SET ON THE NORTH-SOUTH SECTION LINE AND THE CENTERLINE OF R/W S.R. 105. **m.B.**

RECORD: P.I. 60
Sta. - 402+65.72
Δ = 16°34'00" RT.
43' E of Luckey Rd.