

O.D.O.T. DISTRICT 2 SURVEY OFFICE (USE ONLY)

PERSONNEL

REFERENCE NO. 73 A

SHEET 32 OF 33

NOTES RHOADES DATE 8/18/22
 H.C. AUBLE WEATHER SUNNY
 R.C. NIESE TEMP. 74°

ROUTE SR 105
 COUNTY WOOD
 TOWNSHIP FREEDOM
 SECTION 9
 T 5 N R 12 E

DWG BY RHOADES PID PAVETRAIN

TYPE MONUMENT P.K./WASHER

ON SURFACE - ~~BELOW~~ ON _____

OFFSET C PAVEMENT 1.1' ~~LT~~ : RT

9.4' TO RT EDGE PAVEMENT

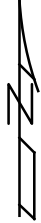
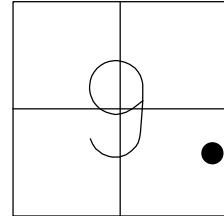
STATION: 450+01.31

HORIZ.DATUM: NAD83 2011

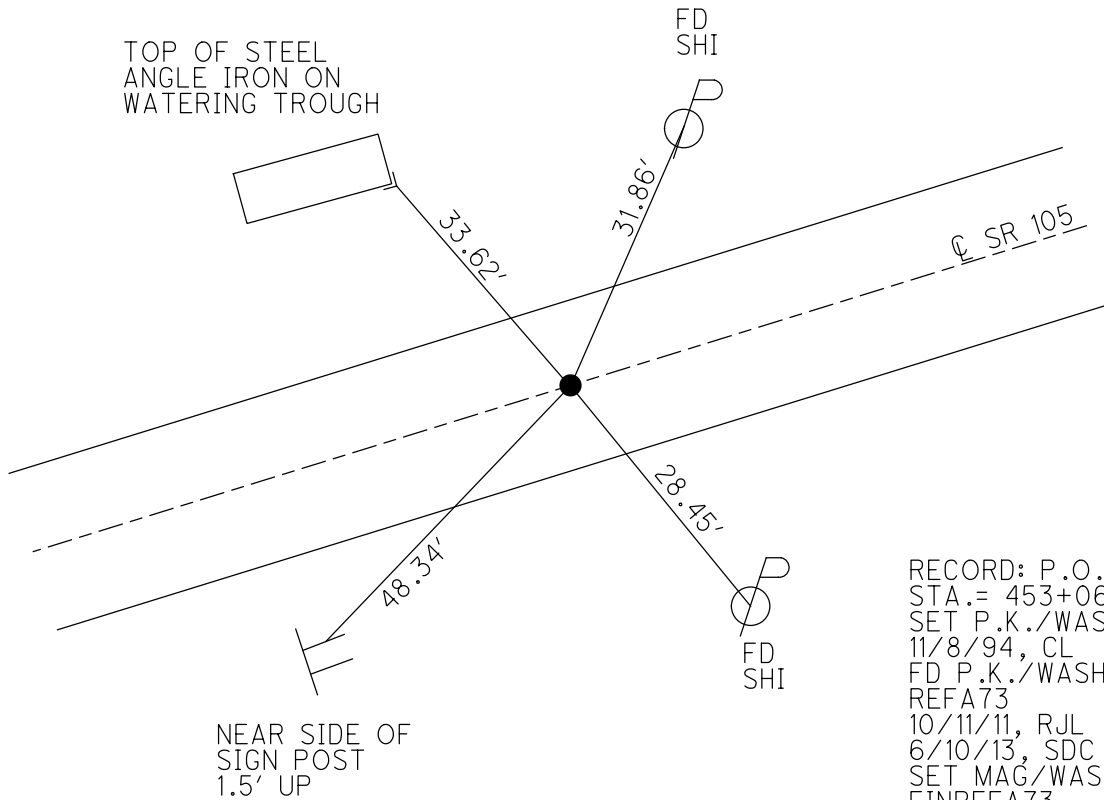
GEOID: NAVD88 2018

GRID: NORTHING: 634521.221

EASTING: 1701070.753



RES.#4054



RECORD: P.O.T.
 STA.= 453+06.45
 SET P.K./WASHER
 11/8/94, CL
 FD P.K./WASHER
 REFA73
 10/11/11, RJL
 6/10/13, SDC
 SET MAG/WASHER
 FINREFA73
 10/3/13, SDC
 FD P.K./WASHER
 8/18/22, DSA
 REF73A
 3/2/23, DSA

O.D.O.T. DISTRICT 2 SURVEY OFFICE (USE ONLY)

PERSONNEL

REFERENCE NO. 73 A

SHEET 32 OF 33

NOTES RHOADES

DATE 6/10/13

ROUTE SR 105

H.C. CODER

WEATHER CLOUDY

COUNTY WOOD

R.C. RHOADES

TEMP. 72°

TOWNSHIP FREEDOM

SECTION 9

T 5 N R 12 E

TYPE MONUMENT P.K./WASHER

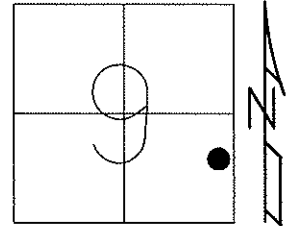
ON SURFACE - ~~BELOW~~ ON

LEFT - CL PAV'T - RIGHT ON

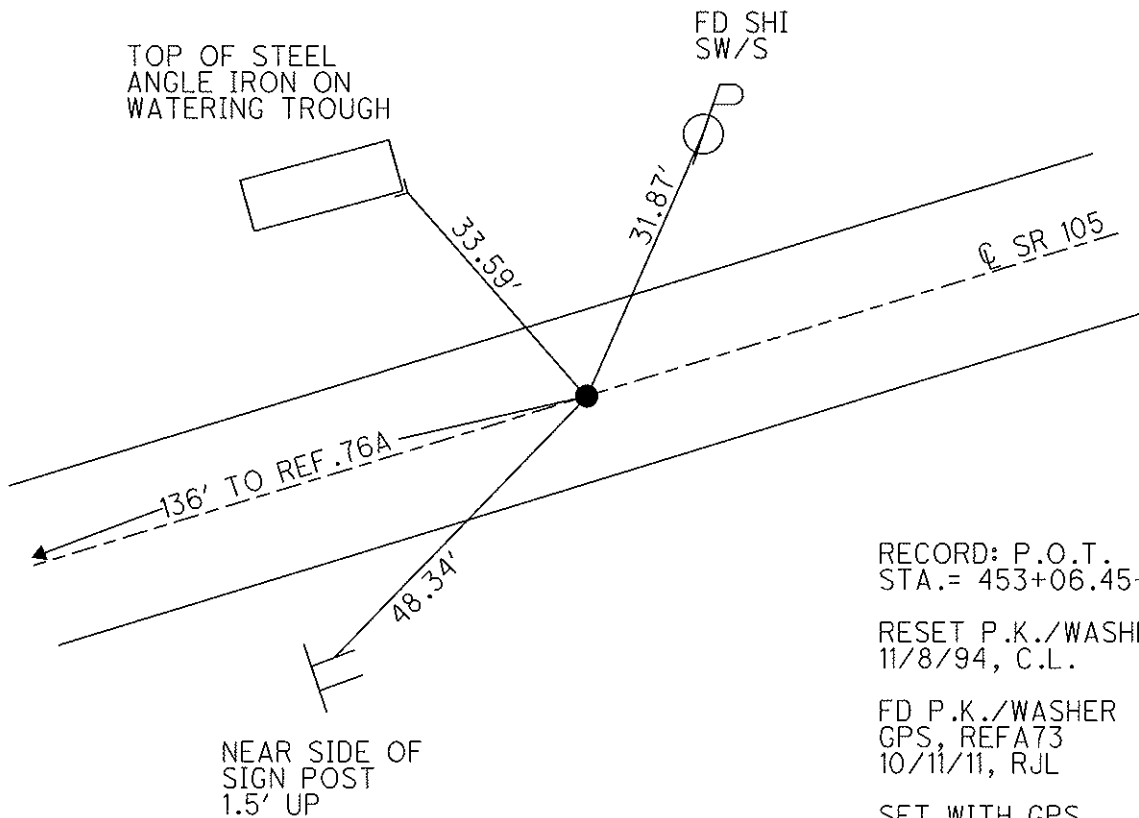
9.4' TO RT EDGE PAVEMENT

S.L.M. 451+44

Grid: Northing: 634521.202 Easting: 1701322.682



RES.#4054



RECORD: P.O.T.
STA.= 453+06.45-P.L.

RESET P.K./WASHER
11/8/94, C.L.

FD P.K./WASHER
GPS, REFA73
10/11/11, RJL

SET WITH GPS,
2 TIES REMAIN.
SET MAG/WASHER
GPS, FINREFA73
10/3/13, SDC

O.D.O.T. DISTRICT 2 SURVEY OFFICE

PERSONNEL _____

REFERENCE NO. _____

SHEET 25 OF 49

NOTES CHANEY

H.C. RIPPLE

R.C. BARBOUR

DATE 8-4-94

WEATHER CLOUDY

TEMP. +80°

ROUTE S.R. 105

COUNTY WOOD

TOWNSHIP FREEDOM

SECTION 9

Reset 11-8-94

T 5 N R 12 E

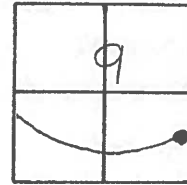
TYPE MONUMENT BOTH PK/WASHER

ON SURFACE - BELOW YES

~~LEFT - & PAV'T. - RIGHT~~ YES ON &

TO EDGE PAVEMENT

S.L.M. PT "A" = 450+08 PT "B" = 451+44



PT "A" - STA - 450 + 08 73

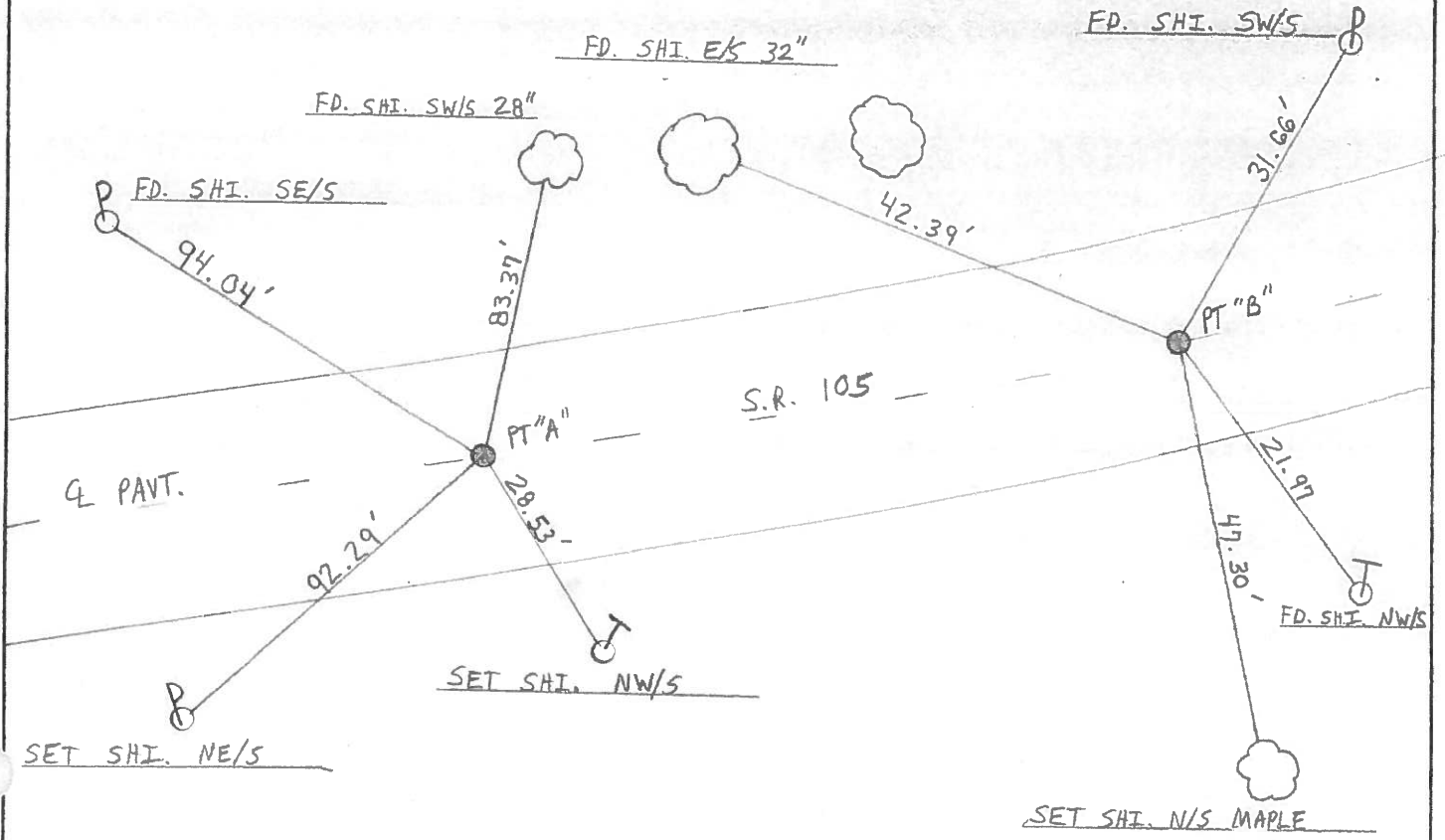
9.7' TO RT. EP, 10.2' TO LT. EP

RECORD: P.O.T. STA 451+71.53 - P.L.

73A PT "B" - STA 451 + 44

9.4' TO RT. EP, 10.5' TO LT. EP

RECORD: P.O.T. STA 453+06.45 - P.L.



County Wood S.R. 105

Township FREEDOM

Section 9

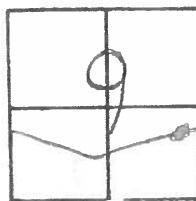
T₁S₁N, R₁₂E

| | | |
|-----------|--------------------|-----------|
| Personnel | <u>BARUHISEZ</u> | <u>HC</u> |
| | <u>HOUSEHOLDER</u> | <u>RC</u> |
| | <u>LOCHIRKE</u> | <u>□</u> |
| | <u>HOPPMAN</u> | <u>+</u> |

Date 8-8-84

Weather CLEARING

Temp. + 85



RECORDED

P.O.T.

451+71.53 - P/L

$\Delta = 0^{\circ} - 00' - 00''$

Fd: RR Spike @ SURFACE

9.0 REP

10.7 LEP

1.0 RE OF E PAVT

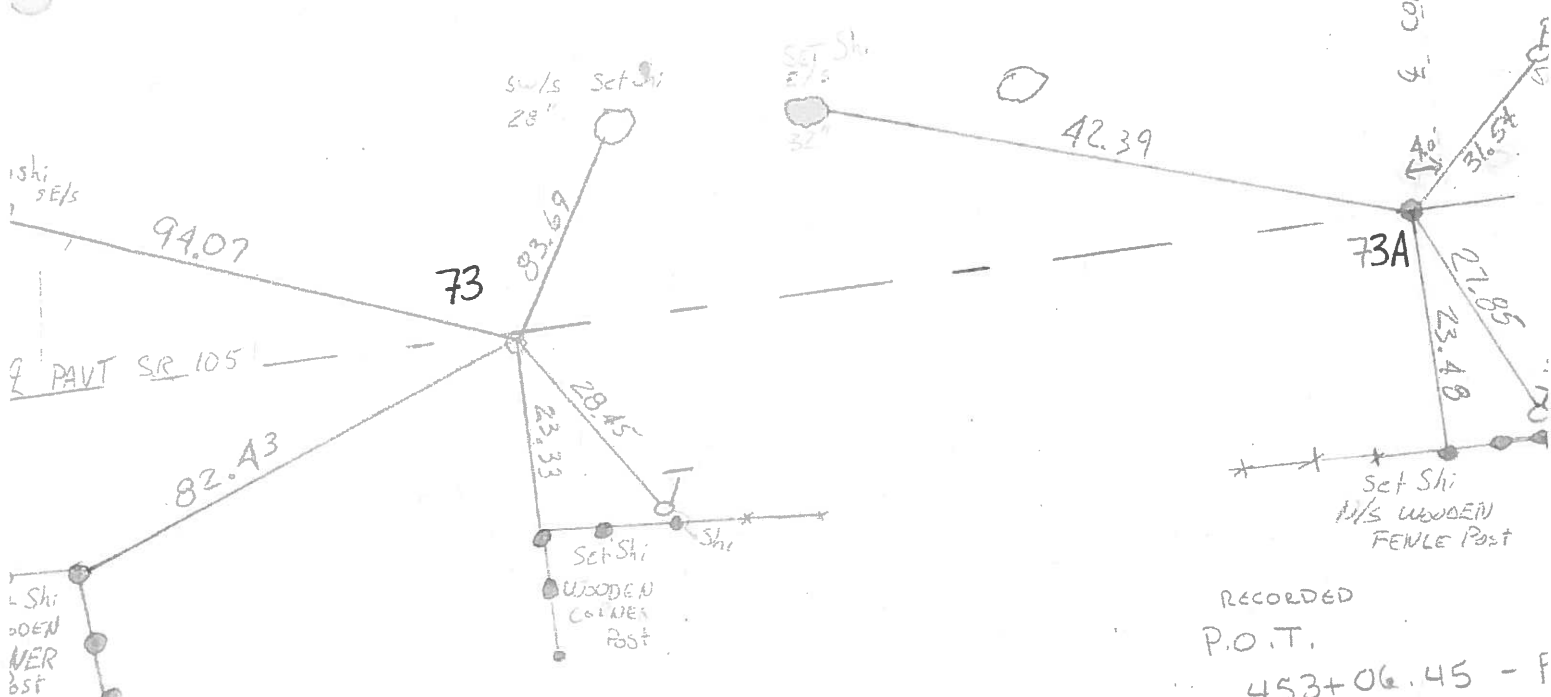
SLM 448+35

SET P.K. & WASHER

FOR BOTH POINTS

10-3-84

C.L.



RECORDED

P.O.T.

453+06.45 - F

$\Delta = 0^{\circ} - 00' - 00''$

Fd: RR Spike @ SURFACE

ON E PAVT

9.5 REP

10.0 LEP

SLM 449+70

PERSONNEL TITLE PERSONNEL TITLE

COUNTY Wood DATE 31 Oct. 73

Stane _____

S. R. 105 WEATHER Cloudy

Michalak _____

SEC. Freedom Twp. TEMP. 55°

Dunn _____

Curtis _____

DESCRIPTION

References to Control Points
LEFT CENTER LINE RIGHT

JOB NO.

