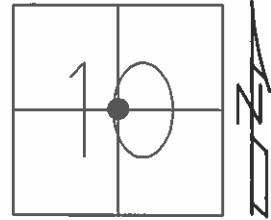


O.D.O.T. DISTRICT 2 SURVEY OFFICE (USE ONLY)

PERSONNEL	REFERENCE NO.	<u>78</u>	SHEET	<u>4</u>	OF	<u>17</u>
NOTES	LEU	DATE	<u>04-25-16</u>	ROUTE	<u>SR 105</u>	
H.C.	<u>HOMAN</u>	WEATHER	<u>PARTLY CLDY</u>	COUNTY	<u>WOOD</u>	
R.C.	<u>LEU</u>	TEMP.	<u>52°F</u>	TOWNSHIP	<u>FREEDOM</u>	
				SECTION	<u>10</u>	
				T	<u>5</u>	R
				N	<u>12</u>	E

TYPE MONUMENT MAG/WASHER
 ON SURFACE - ~~BELOW~~ ON
 LEFT - Q PAV'T - RIGHT ON
8.8' TO RT EDGE PAVEMENT
 S.L.M. 483+61



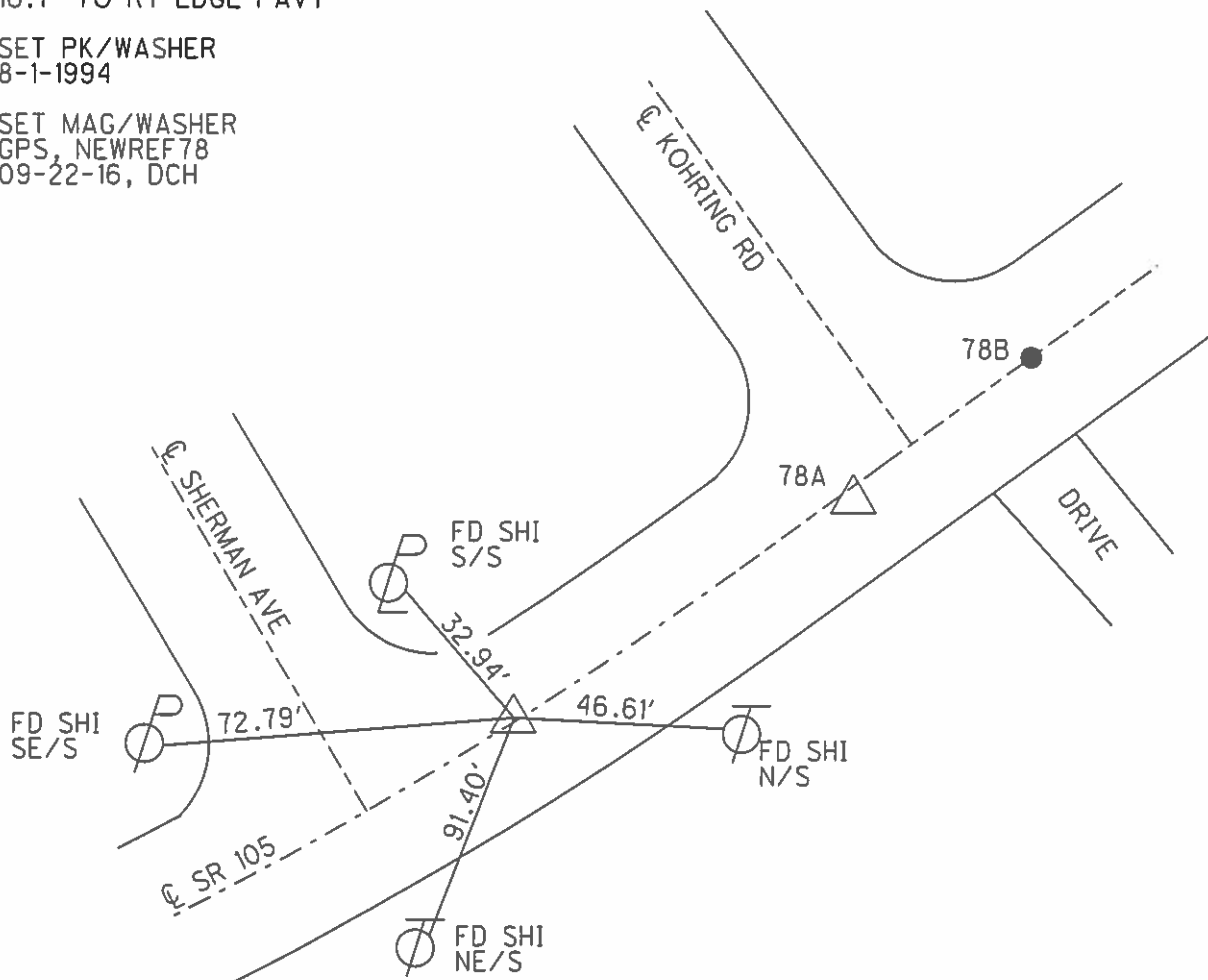
GRID: NORTHING: 635800.6354 EASTING: 1703920.763

RECORD:
 P.I. #69 484+33.20
 $\Delta=4^{\circ}53'20''$ RT
 PK/WASHER @SURFACE
 STA 482+72 ON Q SR 105
 16.7' TO RT EDGE PAVT

DIST. 78-78A = 89.17'
 78A-78B = 45.46'

SET PK/WASHER
 8-1-1994

SET MAG/WASHER
 GPS, NEWREF78
 09-22-16, DCH



O.D.O.T. DISTRICT 2 SURVEY OFFICE

PERSONNEL _____

REFERENCE NO. 78

SHEET 30 OF 49

NOTES CHANEY

H.C. RIPPLE

R.C. BARBOUR

DATE 8-1-1994

WEATHER FAIR

TEMP. +80°

ROUTE S.R. 105

COUNTY WOOD

TOWNSHIP FREEDOM

SECTION 10

T.5 N R.12 E

TYPE MONUMENT CIRCULAR MON. IN CONC.

ON SURFACE - BELOW YES

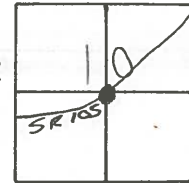
LEFT-~~C~~ PAV'T. - RIGHT YES 13' RT & 105

8.8' TO RT EDGE PAVEMENT

S.L.M. 483+61

RECORD: $\Delta = 15^{\circ} 12' 00''$ LT.

POINT "B"
SET PK/WASHER

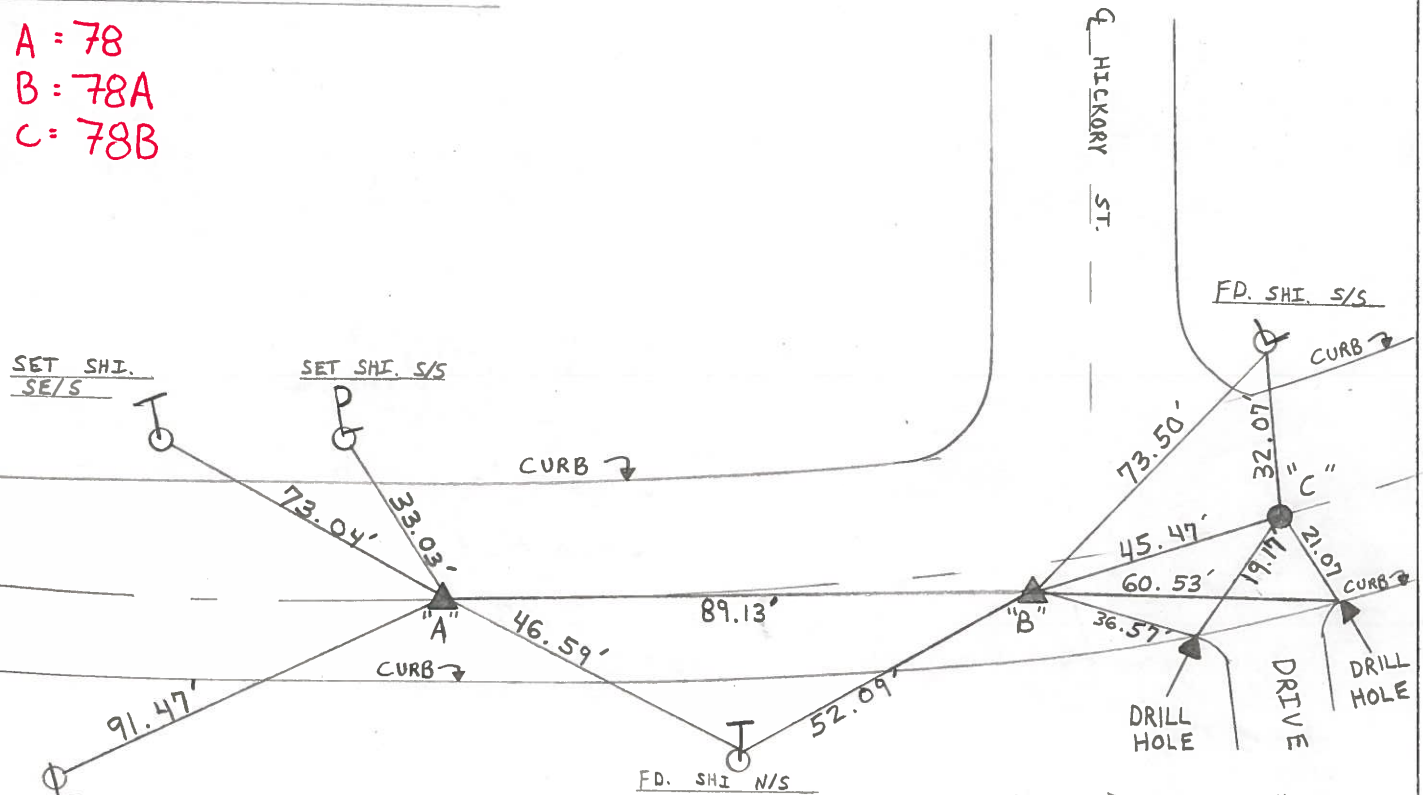


PT. "A" Fd. PK/WASH @ SURFACE
 STA - 482+72 ON & S.R. 105
 16.7' TO RT EDGE PAVT.
 RECORD: P.I. #69 484+33.20
 $\Delta = 4^{\circ} 53' 20''$ RT.

SET PK/WASHERS AT
 ALL THREE POINTS. 8-1-1994

PT. "C" Fd. BENT P.K./WASHER 4" DOWN
 STA - 484+06.47 7.7" RT & S.R. 105
 15.3" TO RT CURB

A = 78
 B = 78A
 C = 78B



NOTE: FD. DRILL HOLE ON
 CONC. CURB, BOTH SIDES OF
 RES. DRIVEWAY.

County WOOD S.R. 105

Township FREEDOM - PEMBERVILLE

Section 10

T12N, R12E

Personnel BARND HISEL HC

HOUSE HOLDER RC

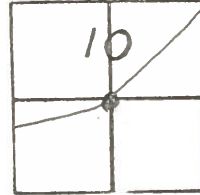
LOEHRKE ITI

HOFFMAN P

Date 8-9-84

Weather PT CLOUDY

Temp. +81



78

RECORDED

P.I. # 69

484+33.20

$\Delta = 40-53'-20''$ Rt.

Fd PK @ SURFACE

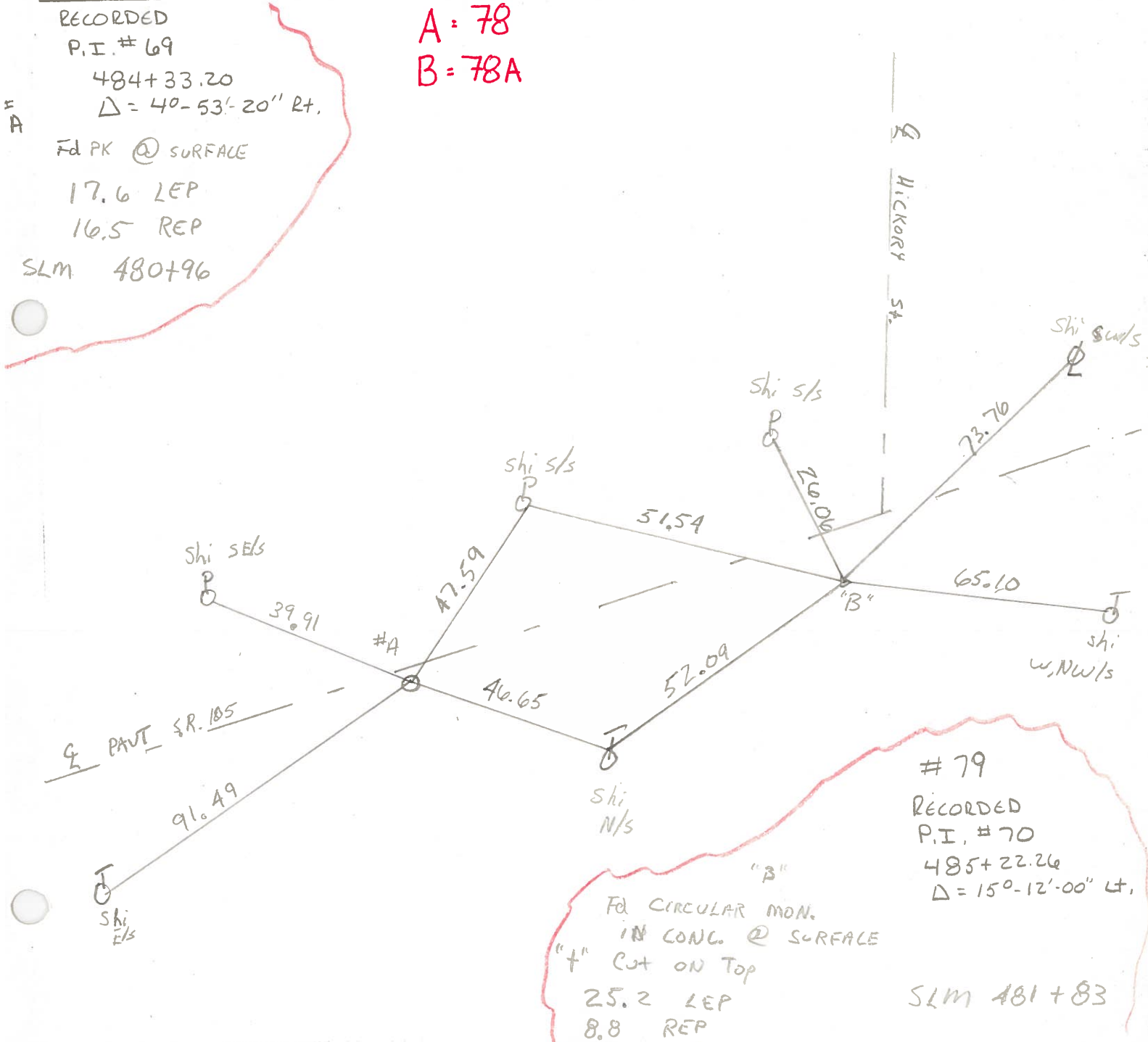
17.6 LEP

16.5 REP

SLM 480+96

A = 78

B = 78A



HICKORY ST.

Shi S/W/S

Shi S/S

Shi S/S

Shi S/S

Shi W, N/W/S

Shi N/S

Shi E/S

79

RECORDED

P.I. # 70

485+22.26

$\Delta = 150-12'-00''$ Lt.

SLM 481+83

FOR CIRCULAR MON. IN CONC @ SURFACE

"t" CUT ON TOP

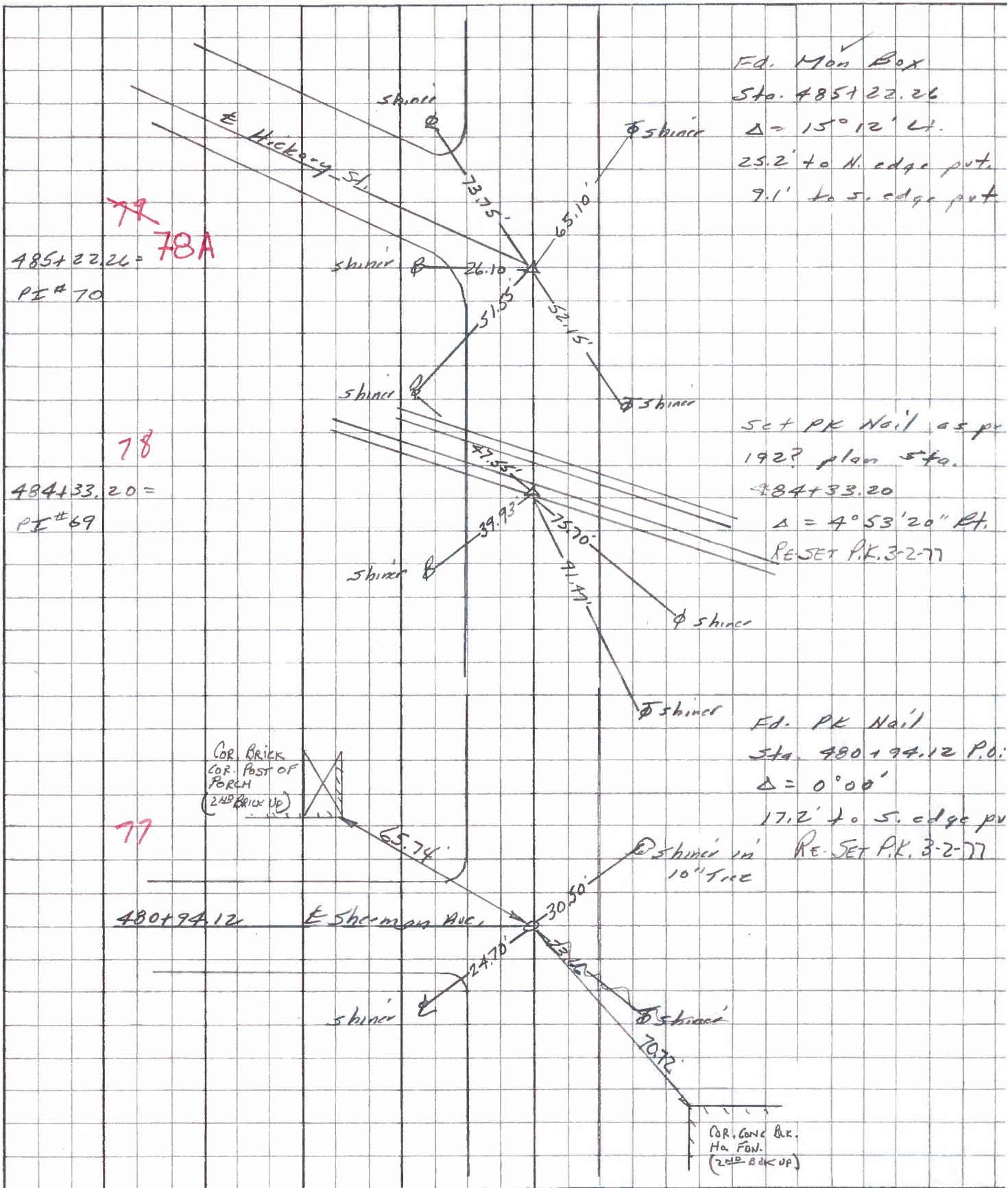
25.2 LEP

8.8 REP

2' ...

PERSONNEL	TITLE	PERSONNEL	TITLE	COUNTY	Wood	DATE	31 Oct. 78
Stone				S. R.	105	WEATHER	Cloudy
Michalek				SEC.	Pemberville	TEMP.	55°
Jeano							
Curtis							

DESCRIPTION References to Control Points JOB NO. _____
 LEFT CENTER LINE RIGHT



PERSONNEL TITLE PERSONNEL TITLE

COUNTY WOOD

DATE OK-9-15-70

S. R. #105

WEATHER

SEC. PEMBERVILLE

TEMP.

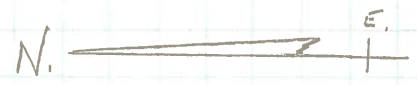
DESCRIPTION

LEFT

CENTER LINE

RIGHT

JOB NO.

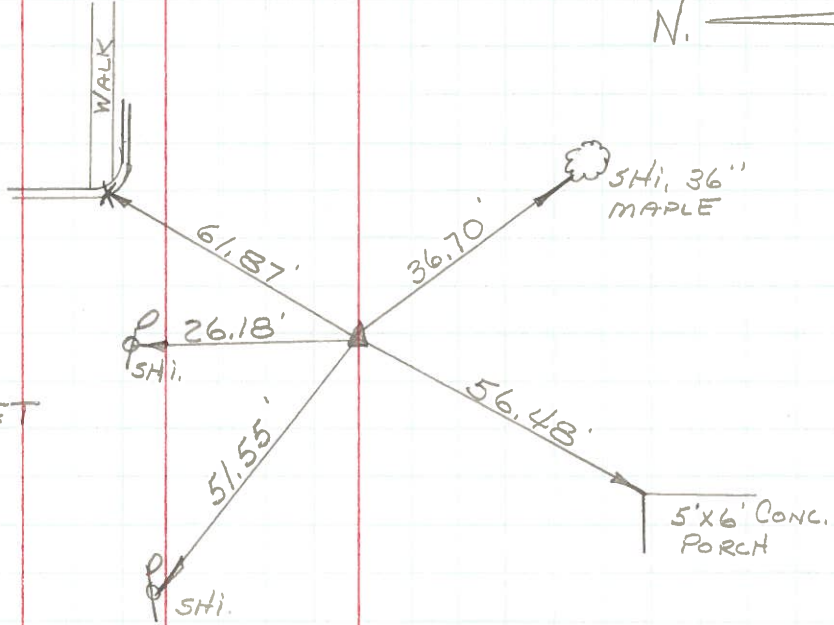


STA. 377+01.90
MON. BOX

HICKORY STREET

#923

78A



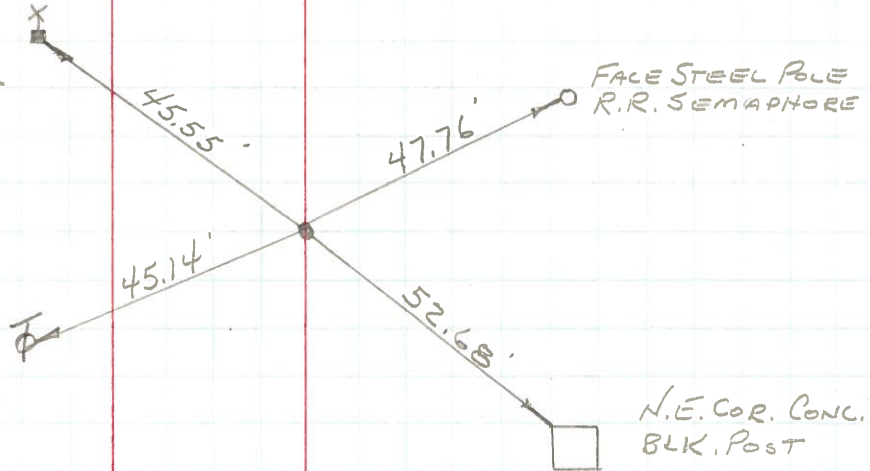
S.W. COR.
BASE R.R.
FLASHER

STA. 376+12.84
NAIL & SHINER &
MAIN R.R. TRACK

(DID NOT FIND)

#922

78



PERSONNEL TITLE PERSONNEL TITLE

COUNTY Wood DATE OK 12-24-57
OK 9-15-70 R.B.

S. R. #105 WEATHER

SEC. Pemberville TEMP.

DESCRIPTION LEFT CENTER LINE RIGHT JOB NO.

