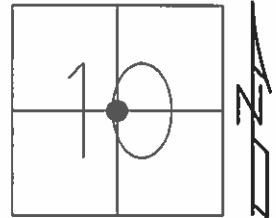


O.D.O.T. DISTRICT 2 SURVEY OFFICE (USE ONLY)

PERSONNEL	REFERENCE NO.	<u>78 B</u>	SHEET	<u>6</u>	OF	<u>17</u>
NOTES	LEU	DATE	<u>04-25-16</u>	ROUTE	<u>SR 105</u>	
H.C.	<u>HOMAN</u>	WEATHER	<u>PARTLY CLDY</u>	COUNTY	<u>WOOD</u>	
R.C.	<u>LEU</u>	TEMP.	<u>52°F</u>	TOWNSHIP	<u>FREEDOM</u>	
				SECTION	<u>10</u>	
				T <u>5</u> N R <u>12</u> E		

TYPE MONUMENT MAG/WASHER
 ON SURFACE - ~~BELOW~~ ON
 LEFT - Q PAV'T - RIGHT ON
8.8' TO RT EDGE PAVEMENT
 S.L.M. 483+61



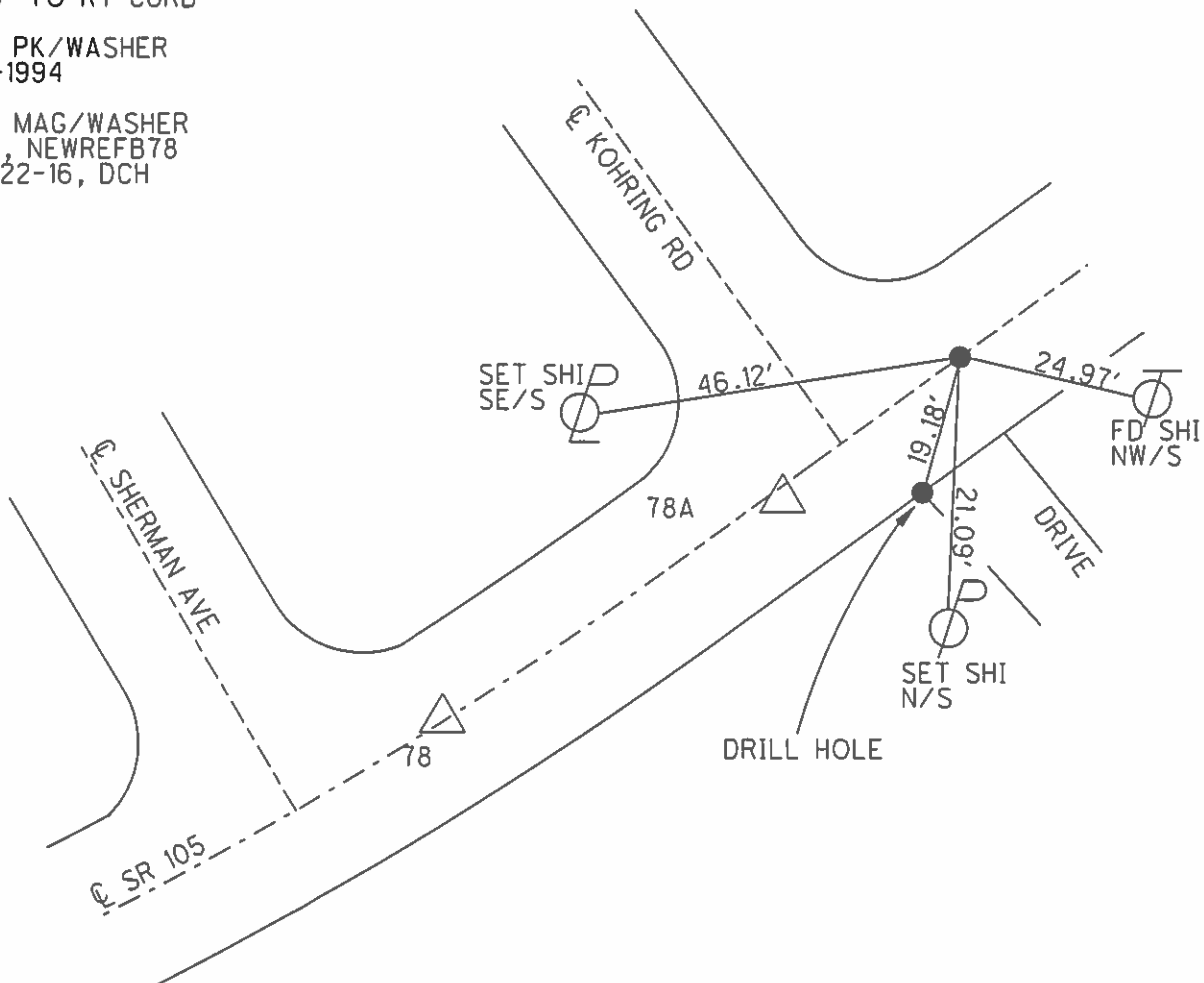
GRID: NORTHING: 635856.1508 EASTING: 1704042.229

RECORD:
 FD BENT PK/WASHER
 4" DOWN
 STA 484+06.47
 7.7' RT Q SR105
 15.3" TO RT CURB

DIST. 78-78A = 89.17'
 78A-78B = 45.46'

SET PK/WASHER
 8-1-1994

SET MAG/WASHER
 GPS, NEWREFB78
 09-22-16, DCH



O.D.O.T. DISTRICT 2 SURVEY OFFICE

PERSONNEL

REFERENCE NO. 78

SHEET 30 OF 49

NOTES CHANEY

H.C. RIPPLE

R.C. BARBOUR

DATE 8-1-1994

WEATHER FAIR

TEMP. +80°

ROUTE S.R. 105

COUNTY WOOD

TOWNSHIP FREEDOM

SECTION 10

T 5 N R 12 E

TYPE MONUMENT CIRCULAR MON. IN CONC.

ON SURFACE - BELOW YES

POINT "B"

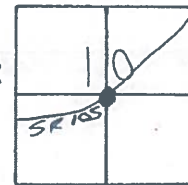
LEFT-~~C~~ PAV'T. - RIGHT YES 13' RT & 105

SET PK/WASHER

8.8' TO RT EDGE PAVEMENT

S.L.M. 483+61

RECORD: $\Delta = 15^\circ - 12' - 00''$ LT.



PT. "A" Fd. PK/WASH @ SURFACE

STA - 482+72 ON & S.R. 105

16.7' TO RT EDGE PAVT.

RECORD: P.I. #69 484+33.20

$\Delta = 4^\circ - 53' - 20''$ RT.

SET PK/WASHERS AT

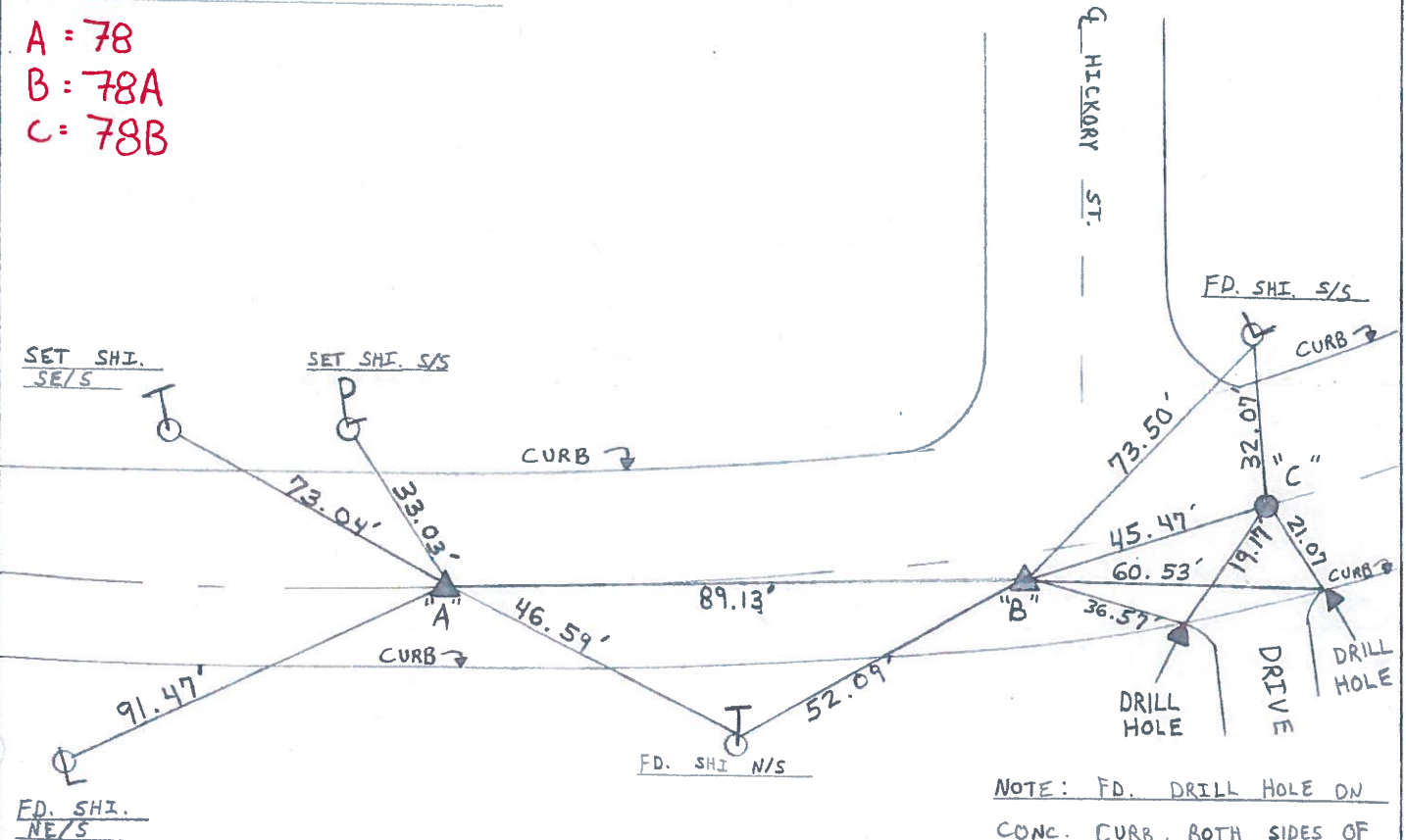
ALL THREE POINTS. 8-1-1994

PT. "C" Fd. BENT PK/WASHER 4" DOWN

STA - 484+06.47 7.7' RT & S.R. 105

15.3' TO RT CURB

A = 78
B = 78A
C = 78B



NOTE: FD. DRILL HOLE ON CONC. CURB, BOTH SIDES OF RES. DRIVEWAY.