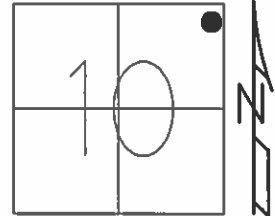


O.D.O.T. DISTRICT 2 SURVEY OFFICE (USE ONLY)

PERSONNEL	REFERENCE NO.	<u>82</u>	SHEET	<u>15</u>	OF	<u>17</u>
NOTES	LEU	DATE	<u>04-25-16</u>	ROUTE	<u>SR 105</u>	
H.C.	<u>HOMAN</u>	WEATHER	<u>OVERCAST</u>	COUNTY	<u>WOOD</u>	
R.C.	<u>LEU</u>	TEMP.	<u>70°F</u>	TOWNSHIP	<u>FREEDOM</u>	
				SECTION	<u>10</u>	
				T	<u>5</u>	N
				R	<u>12</u>	E

TYPE MONUMENT MAG/WASHER  
 ON SURFACE - ~~BELOW~~ ON  
 LEFT - Q PAV'T - RIGHT ON  
16' TO RT EDGE PAVEMENT  
 S.L.M. 502+27

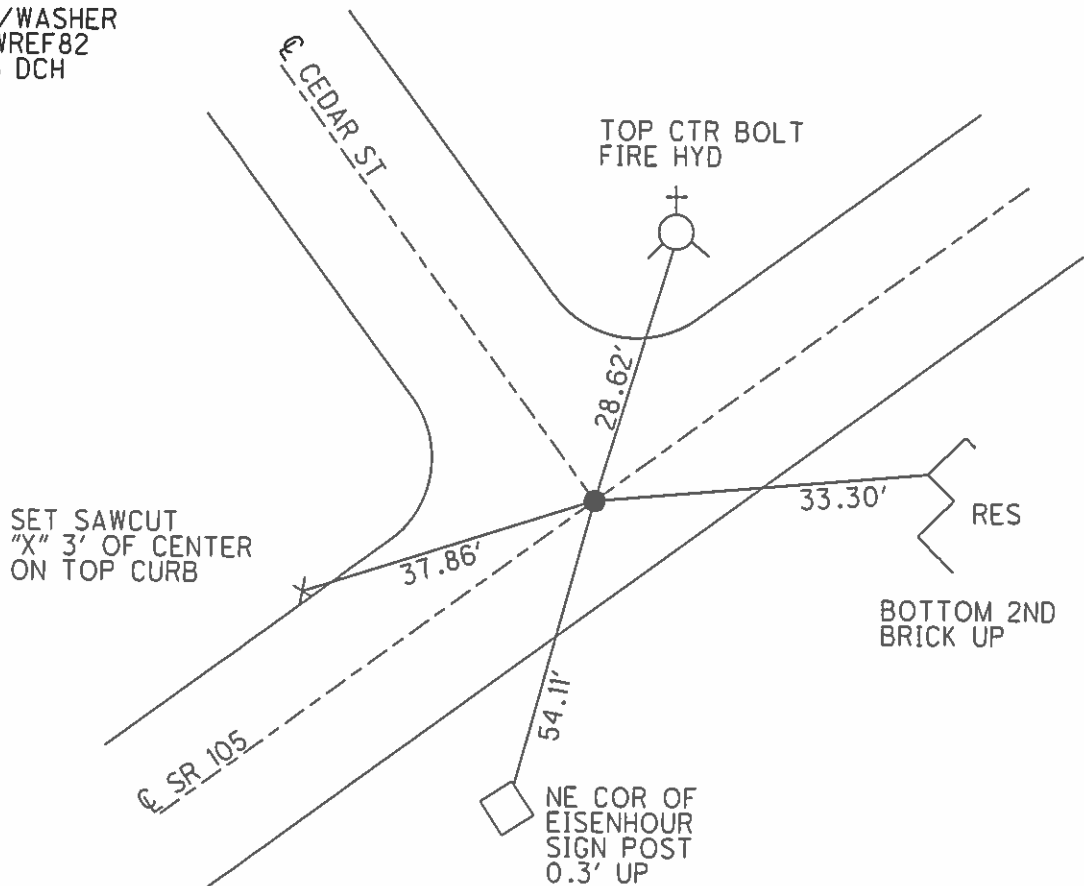


GRID: NORTHING: 636905.7202 EASTING: 1705526.487

RECORD:  
 STA 503+86.25  
 Δ=0°0'00"

SET PK/WASHER  
 11-14-94, MRC

SET MAG/WASHER  
 GPS, NEWREF82  
 09-22-16 DCH



# O.D.O.T. DISTRICT 2 SURVEY OFFICE

PERSONNEL

REFERENCE NO. 82

SHEET 36 OF 49

NOTES CHANEY

H.C. RIPPLE

R.C. BARBOUR

DATE 8-5-94

WEATHER OVERCAST

TEMP. +65°

ROUTE S.R. 105

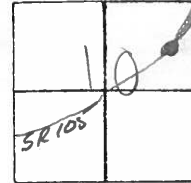
COUNTY WOOD

TOWNSHIP FREEDON

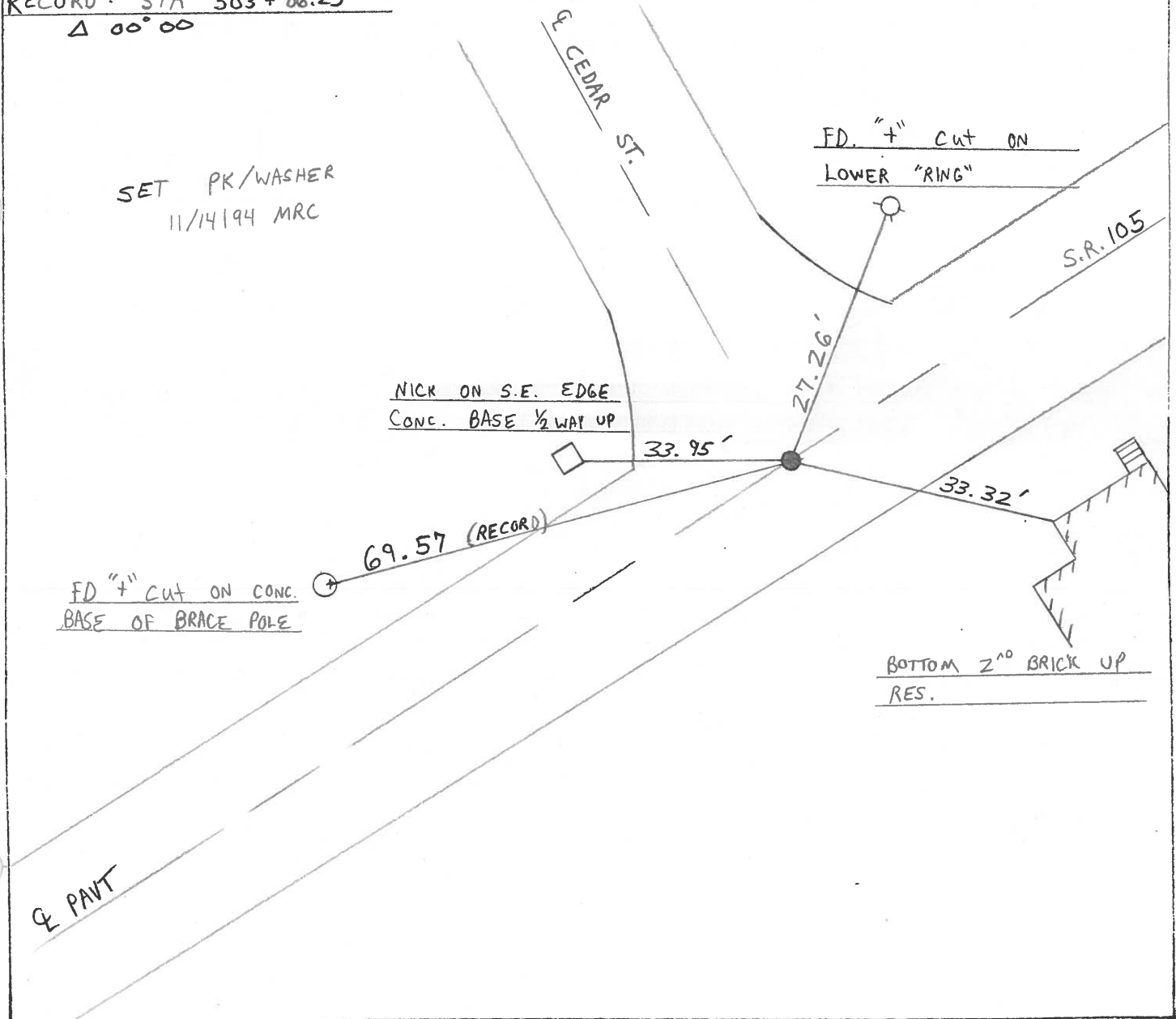
SECTION 10

T 5 N R 12 E

TYPE MONUMENT PK NAIL  
 ON SURFACE - BELOW YES ON SURFACE  
~~LEFT - C PAV'T. - RIGHT~~ YES & BOTH  
16' TO RT EDGE PAVEMENT  
 S.L.M. 502 + 27



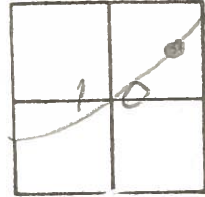
RECORD: STA 503 + 86.25  
 $\Delta$  00° 00



County WOOD S.R. 105  
 Township FREEDOM-PEMBLERVILLE  
 Section 10  
 T&N, R&E

Date 8-9-84  
 Weather PT CLOUDY  
 Temp. +86

Personnel	<u>BARNHISEZ</u>	<u>HC</u>
	<u>HOUSEHOLDER</u>	<u>RC</u>
	<u>LOEHRKE</u>	<u>TD</u>
	<u>Hoffman</u>	<u>P</u>



#82

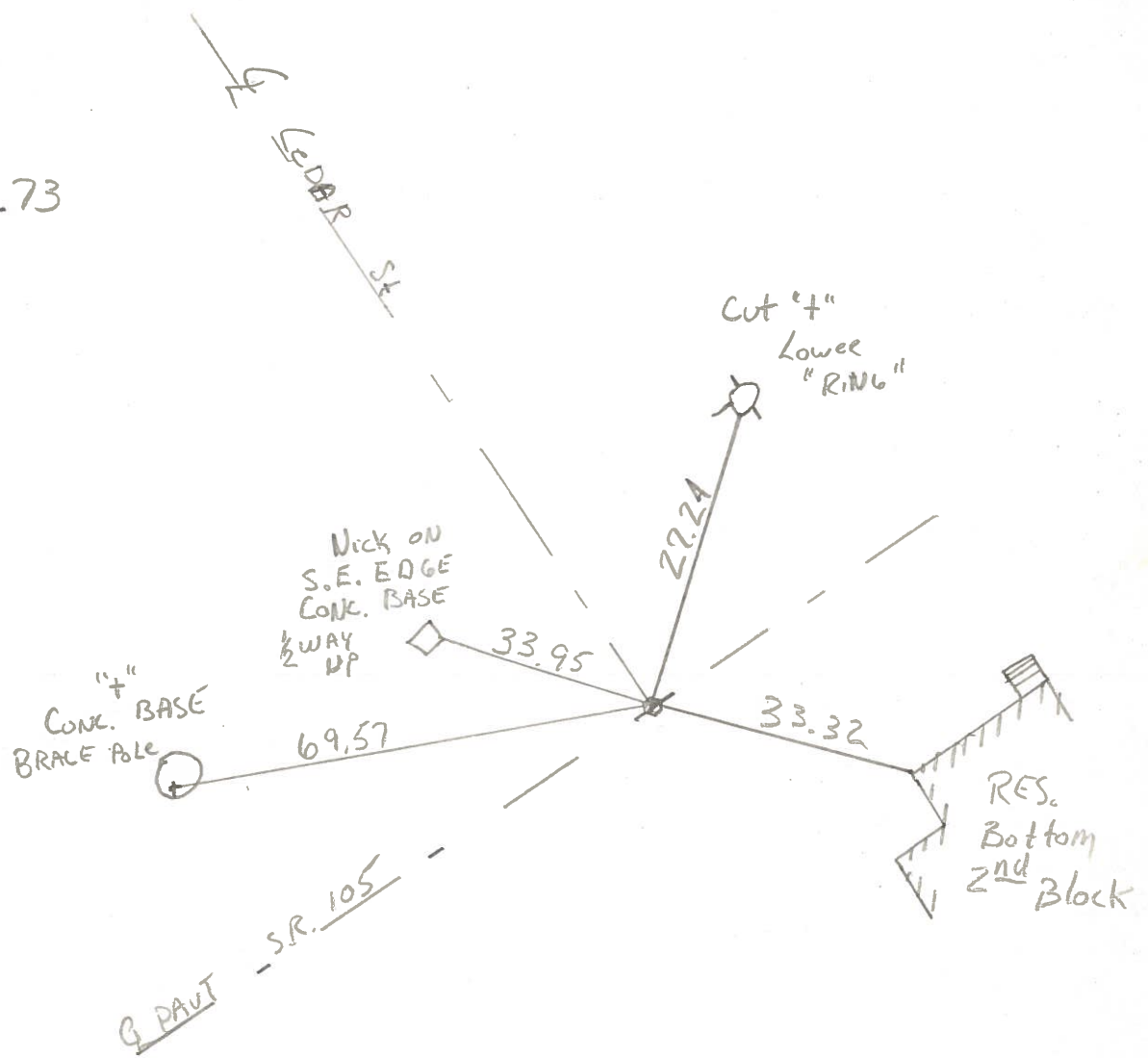
RECORD

STA 503+86.25  
 $\Delta = 0^{\circ} 00'$

FD: PK @ SURFACE  
 Q CEDAR ST

SLM 500+58  
 FROM Pt #81A  
 to Pt #82 - 86.73

SET PK + WASHER  
 10-3-84  
 C.L.



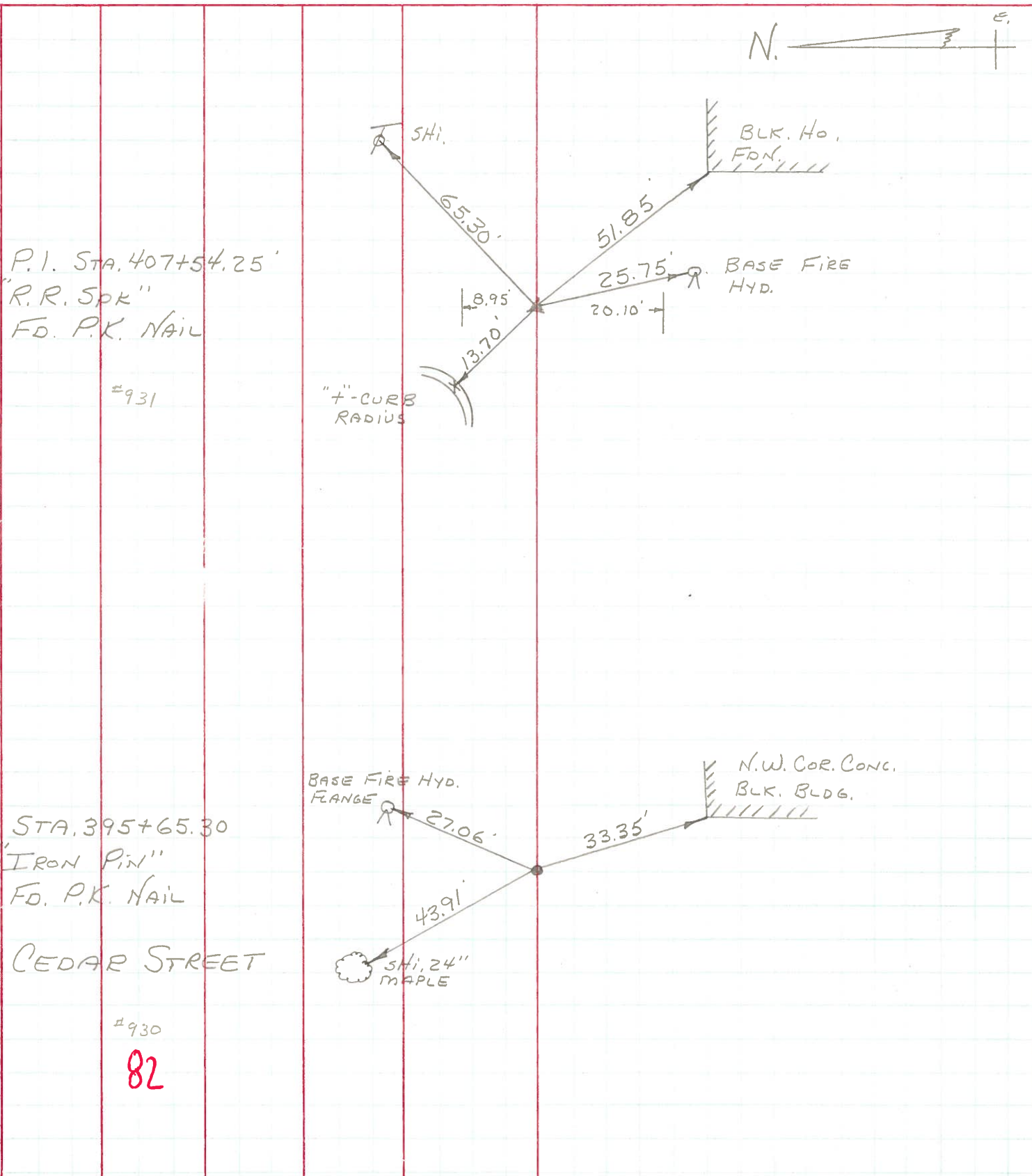
PERSONNEL TITLE PERSONNEL TITLE

COUNTY Wood DATE OK-9-16-70

S. R. #105 WEATHER

SEC. PEMBERVILLE TEMP.

DESCRIPTION LEFT CENTER LINE RIGHT JOB NO.



P.I. STA. 407+54.25  
"R.R. Spk"  
FD. P.K. NAIL

#931

"4"-CURB  
RADIUS

STA. 395+65.30  
"IRON PIN"  
FD. P.K. NAIL

CEDAR STREET

#930

82

BASE FIRE HYD.  
FLANGE

SHI, 24"  
MAPLE

N.W. COR. CONC.  
BLK. BLDG.



PERSONNEL TITLE PERSONNEL TITLE

COUNTY Wood

DATE OK 12-26-57  
OK 9-16-70 R.B.

S. R. #105

WEATHER

SEC.

TEMP.

DESCRIPTION

LEFT

CENTER LINE

RIGHT

JOB NO.

Sta. 395+65.30  
Cedar St.  
Iron pin  
#930  
P.K. Nail  
82

base fire Hyd. proper  
(FLANGE)

27.06'

33.35'

N.W. COR. CONC. BLDG.

45.00'

43.91'

23.68' (GONE)

base street light pole

Shi. 24" maple

P.I. Sta. 407+54.25'  
E.R. spk. - P.K. NAIL  
#931 @ SURFACE

65.30'

51.85'

block fdn. Ho.  
Not plumbed

base fire Hyd. proper

8.95'

25.75'

1/2" cut in curb radius.

13.70'

20.10'

S.W. COR. CONC. SIGN BASE (SOUTH)

Sta. 410+  
Pemberville Ed.  
S.R. #105  
#932

Pump

38.41'

1/2" cut in face conc. dr.

74.85'

N.W. cor. conc. step to scale office of Elevator.

68.50'

45.25'

28.25'

77.10'

Small R.R. Spk.  
83

Shi. 12" maple

Sta. 414+22.10  
Fd. R.R. spk.  
#933

32.16'

65.30'

base fire Hyd.

49.38'

22.50'