

RD. TR. 41, T6N, R.12E.
TROY TWP.

RD. TR. 44, T6N, R.12E.
TROY TWP.

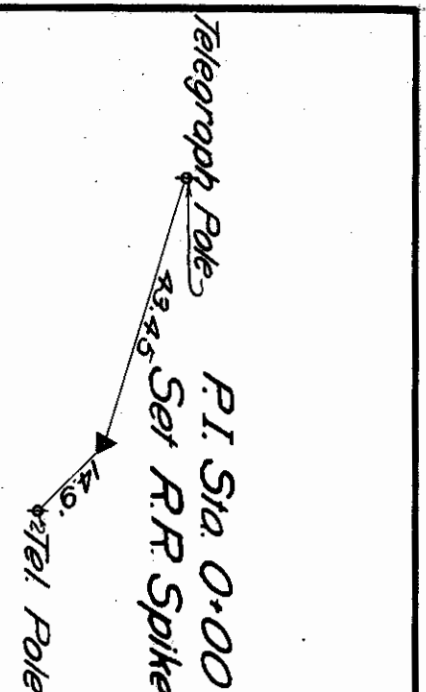
RD. TR. 41, T6N, R.12E.
TROY TWP.

TREES

NO.	PLUS	OUT	SIZE	KIND
Sta. 12+00 to Sta. 13+00				
1	1	23	6"	Poplar
2	1	26	6"	Elm
3	6	22	14"	Elm
4	13	28	12"	Poplar
5	20	24	12"	Elm
6	35	23	8"	"
7	39	22	10"	"
8	63	25	10"	Ash
9	87	26	6"	Elm
10	94	26	6"	"
11	98	19	6"	"
Sta. 13+00 to Sta. 15+00				
1	9	26	6"	Elm
2	13	26	6"	Catalpa
3	24	27	6"	Elm
4	40	25	8"	Catalpa
5	67	24	8"	"
6	92	24	8"	"
7	23	25	10"	"
8	23	25	8"	"
9	74	25	10"	"
10	85	18	6"	Elm
11	97	25	8"	Catalpa
Sta. 15+00 to Sta. 16+00				
1	24	25	8"	Catalpa
2	27	27	6"	Ash
3	37	15	3"	Elm
4	50	25	12"	Catalpa
5	66	27	4"	"
6	77	25	14"	"
7	93	22	4"	Peach
8	94	25	12"	Elm
Sta. 16+00 to Sta. 17+00				
1	5	28	8"	Elm
2	5	24	8"	Catalpa
3	10	21	8"	Cherry
4	28	15	5"	Walnut
5	31	25	10"	Catalpa
6	44	29	8"	"
7	44	15	4"	Walnut
8	45	29	6"	Catalpa
9	51	25	10"	"
10	59	12	16"	Walnut
11	75	25	10"	Catalpa
Sta. 17+00 to Sta. 19+00				
1	2	25	12"	Catalpa
2	27	27	12"	Elm
3	30	25	10"	Catalpa
4	32	8	12"	Syc
5	47	25	12"	Catalpa
6	65	25	12"	"
7	84	20	36"	Oak
8	80	22	18"	Elm
9	74	14	14"	"
Sta. 19+00 to Sta. 21+00				
1	2	20	6"	Ash
2	7	20	12"	Elm
3	21	29	24"	Beech
4	34	26	18"	Syc
5	20	26	18"	Syc
6	39	28	8"	Maple
7	41	27	8"	Maple
8	53	12	8"	Ash
9	55	12	8"	Buckeye
10	89	26	4"	Peach
11	92	16	13"	Cherry
Sta. 21+00 to Sta. 22+00				
1	15	24	8"	Catalpa
2	13	23	8"	Service
3	19	23	7"	Walnut
4	26	17	8"	"
5	34	17	14"	Elm
6	39	15	16"	"
7	64	10	14"	"
8	72	16	8"	Buckeye
9	67	15	10"	Elm
10	98	51	8"	Pear
Sta. 22+00 to Sta. 23+00				
1	3	22	16"	Hemlock
2	3	21	10"	Peach
3	14	23	18"	Pear
4	16	18	8"	Ash
5	57	12	12"	Elm
6	57	24	18"	Poplar
7	70	21	6"	Walnut
8	71	21	6"	"
9	88	22	7"	Ash
10	93	36	30"	Elm
Sta. 23+00 to Sta. 24+00				
1	24	27	18"	Ironwood
2	81	29	30"	Walnut
3	45	29	30"	"
4	69	23	12"	Butter
5	90	29	18"	Iron
6	24	24	8"	Butter
7	66	28	8"	"
8	89	35	30"	Slump
9	22	8	5"	Peach
10	38	26	6"	Syc
11	68	23	5"	Ash
Sta. 24+00 to Sta. 25+00				
1	10	25	8"	Catalpa
2	12	27	14"	Ash
3	24	27	8"	Elm
4	33	25	10"	Catalpa
5	33	25	16"	"
6	76	25	14"	"
7	29	25	14"	"
8	3	22	12"	Elm
9	33	25	14"	Catalpa
10	45	25	14"	"
11	59	24	12"	Elm
12	72	25	16"	Catalpa
13	81	25	12"	Elm
14	97	25	14"	Catalpa
Sta. 25+00 to Sta. 26+00				
1	14	27	5"	Elm
2	13	25	18"	Catalpa
3	30	24	14"	Elm
4	39	25	15"	Catalpa
5	39	26	22"	"
6	83	27	8"	Elm
7	81	27	8"	"
8	84	26	14"	Catalpa
9	90	27	8"	Oak
Sta. 26+00 to Sta. 27+00				
1	3	27	6"	Elm
2	12	25	12"	Catalpa
3	12	29	10"	Elm
4	14	28	6"	"
5	32	25	16"	Catalpa
6	42	29	6"	Elm
7	57	25	12"	Catalpa
8	67	28	6"	Elm
9	82	25	12"	Catalpa
Sta. 27+00 to Sta. 28+00				
1	00	25	6"	Elm
2	11	28	14"	Catalpa
3	20	25	8"	Elm
4	26	25	10"	"
5	27	22	8"	"
6	28	25	15"	"
7	33	25	14"	Catalpa
8	39	25	10"	Elm
9	48	25	8"	"
10	58	25	12"	Catalpa
11	60	26	18"	Elm
12	61	29	18"	"
13	62	29	18"	"
14	71	24	6"	"
15	72	26	6"	"
16	73	24	8"	"
17	77	26	10"	"
18	78	25	12"	Catalpa
19	97	24	6"	Poplar
20	00	25	6"	Elm

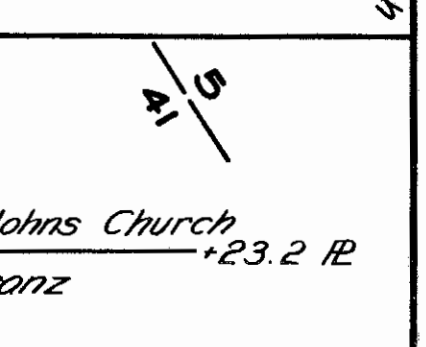
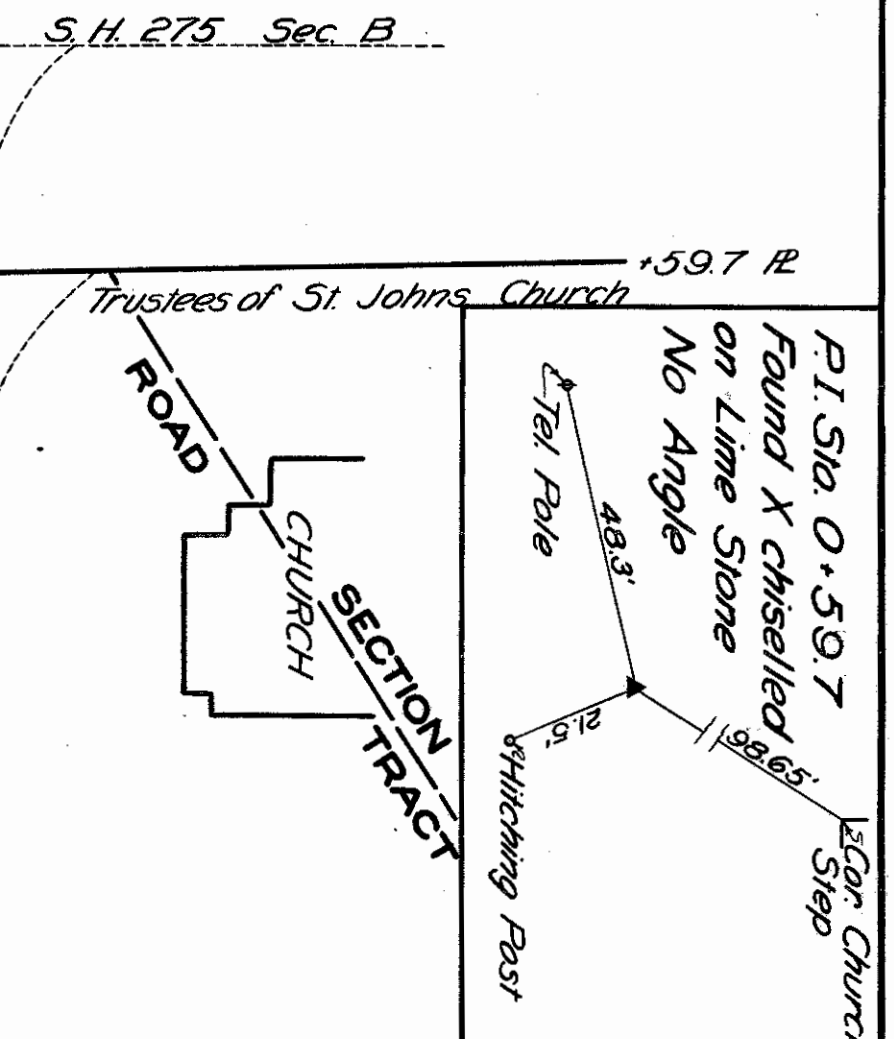
TREES

NO.	PLUS	OUT	SIZE	KIND
Sta. 0+00 to Sta. 3+00				
1	29	26	8"	Catalpa
2	23	27	8"	"
3	28	35	5"	"
4	27	33	8"	Apple
5	25	29	8"	Walnut
Sta. 3+00 to Sta. 4+00				
1	15	24	8"	Catalpa
2	31	29	4"	Ash
3	32	24	5"	Catalpa
4	39	29	16"	Walnut
5	34	28	8"	"
6	35	29	8"	"
7	85	23	8"	Catalpa
8	90	29	6"	Walnut
9	99	29	6"	"
Sta. 4+00 to Sta. 6+00				
1	21	24	8"	Catalpa
2	19	25	12"	Walnut
3	40	23	12"	Catalpa
4	58	23	8"	"
5	65	29	6"	Walnut
6	82	24	8"	Catalpa
7	3	24	8"	"
8	18	17	6"	Walnut
9	23	19	8"	"
10	23	19	8"	"
11	49	24	14"	Catalpa
12	74	24	8"	"
13	97	11	8"	Elm
Sta. 6+00 to Sta. 7+00				
1	19	25	12"	Catalpa
2	24	25	6"	"
3	32	30	10"	"
4	40	25	12"	"
5	60	29	12"	Elm
6	61	25	12"	Catalpa
7	74	29	7"	Elm
8	89	25	14"	Catalpa
9	93	29	4"	Cak
Sta. 7+00 to Sta. 9+00				
1	10	25	8"	Catalpa
2	12	27	14"	Ash
3	24	27	8"	Elm
4	33	25	10"	Catalpa
5	33	25	16"	"
6	76	25	14"	"
7	29	25	14"	"
8	3	22	12"	Elm
9	33	25	14"	Catalpa
10	45	25	14"	"
11	59	24	12"	Elm
12	72	25	16"	Catalpa
13	81	25	12"	Elm
14	97	25	14"	Catalpa
Sta. 9+00 to Sta. 10+00				
1	14	27	5"	Elm
2	13	25	18"	Catalpa
3	30	24	14"	Elm
4	39	25	15"	Catalpa
5	39	26	22"	"
6	83	27	8"	Elm
7	81	27	8"	"
8	84	26	14"	Catalpa
9	90	27	8"	Oak
Sta. 10+00 to Sta. 11+00				
1	3	27	6"	Elm
2	12	25	12"	Catalpa
3	12	29	10"	Elm
4	14	28	6"	"
5	32	25	16"	Catalpa
6	42	29	6"	Elm
7	57	25	12"	Catalpa
8	67	28	6"	Elm
9	82	25	12"	Catalpa
Sta. 11+00 to Sta. 12+00				
1	00	25	6"	Elm
2	11	28	14"	Catalpa
3	20	25	8"	Elm
4	26	25	10"	"
5	27	22	8"	"
6	28	25	15"	"
7	33	25	14"	Catalpa
8	39	25	10"	Elm
9	48	25	8"	"
10	58	25	12"	Catalpa
11	60	26	18"	Elm
12	61	29	18"	"
13	62	29	18"	"
14	71	24	6"	"
15	72	26	6"	"
16	73	24	8"	"
17	77	26	10"	"
18	78	25	12"	Catalpa
19	97	24	6"	Poplar
20	00	25	6"	Elm

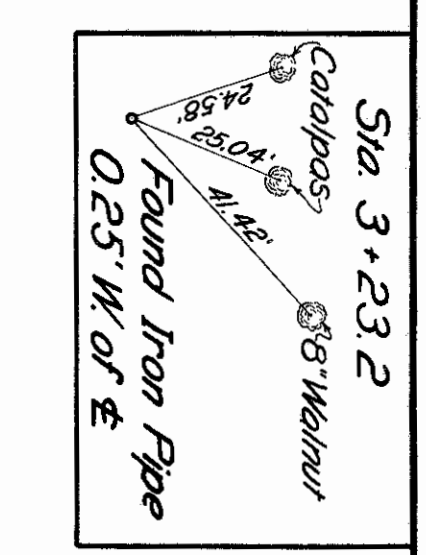


Beginning of Project
Sta. 0+59.7

Edge of Pavement
N. 57° 25' W
R. + 59.7
James Robinson et al



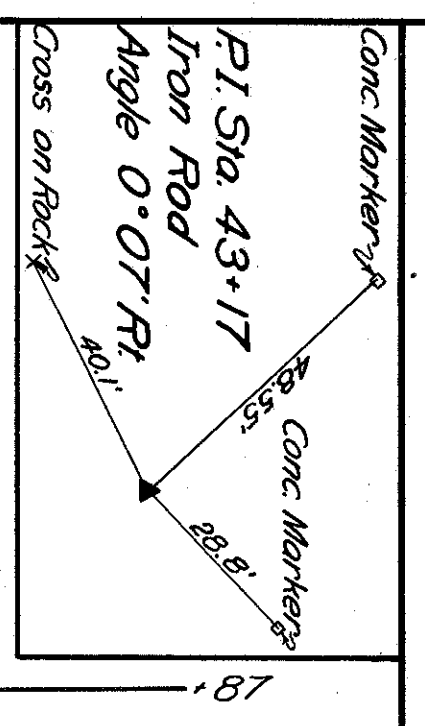
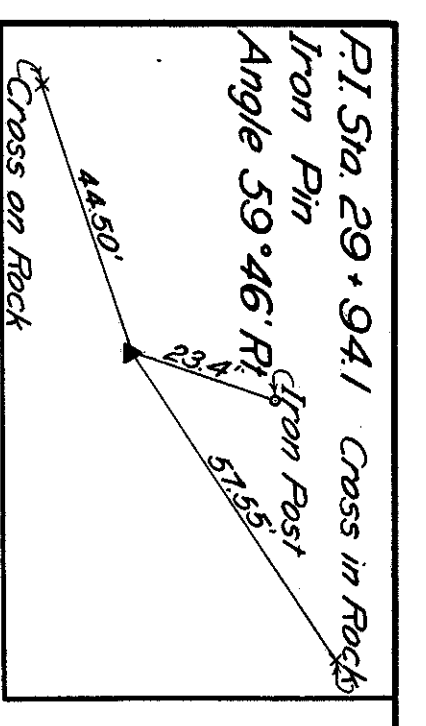
Trustees of St. Johns Church
Herman Franz
R. + 23.2



RD. TR. 41, T6N, R.12E.
TROY TWP.

R/W OKed
4/15/14

WOOD COUNTY
S.H. 439
R/W PLANS



SECTION 32
William A. Scott

SECTION 33
Edith Scott

TREES

NO	PLUS	OUT	SIZE & KIND
1	43	25	12" Ash
2	53	19	12" Elm
3	60	28	8" Elm
4	2	19	8" Iron
5	7	26	8" "
6	42	9	12" Elm
7	40	20	6" Iron
8	36	9	4" Elm
9	71	24	8" "
Sta. 27+00 to Sta. 37+00			
1	19	22	16" Elm
2	39	23	6" "
3	87	23	8" "
4	88	23	8" "
5	89	23	8" "
6	17	22	8" "
7	21	22	14" "
8	85	25	12" "
Sta. 37+00 to Sta. 39+00			
1	9	20	16" Maple
2	16	23	10" Elm
3	21	22	8" Ash
4	22	20	8" Elm
5	32	25	12" "
6	39	25	10" "
7	62	24	14" "
8	68	22	18" Red Oak
9	70	28	12" Elm
10	73	25	7" "
11	83	22	10" "
12	84	25	8" Ash
13	89	21	12" Elm
Sta. 39+00 to Sta. 40+00			
1	2	20	8" Ash
2	43	26	10" "
3	74	18	8" Elm
4	79	25	6" Ash
5	86	18	9" Elm
6	7	23	14" Elm
7	23	24	8" "
8	39	25	12" Elm
9	74	26	12" Maple
10	97	23	12" Elm
Sta. 40+00 to Sta. 48+00			
1	23	12	10" Catalpa
2	26	20	18" Elm
3	48	26	8" Ash
4	55	10	12" Catalpa
5	57	26	10" Elm
6	66	23	14" Elm
7	87	12	12" Catalpa
8	96	26	14" Elm
9	74	26	12" Maple
Sta. 48+00 to Sta. 49+00			
1	3	10	8" Catalpa
2	19	9	12" "
3	32	27	8" Ash
4	42	27	12" Elm
5	64	27	12" "
6	83	7	12" Catalpa
7	99	7	10" "
Sta. 49+00 to Sta. 50+00			
1	15	7	8" Catalpa
2	16	28	10" Elm
3	20	27	12" "
4	30	28	16" "
5	31	7	14" Catalpa
6	34	29	12" Ash
7	47	27	8" "
8	47	7	8" Catalpa
9	61	27	8" Elm
10	65	8	8" Catalpa
11	69	27	14" Elm
12	90	11	36" Oak
Sta. 50+00 to Sta. 51+00			
1	11	8	8" Catalpa
2	14	28	8" Ash
3	32	28	10" Elm
4	42	9	8" Catalpa
5	30	27	10" Ash
6	65	15	88" Ash
7	78	29	14" "
8	93	6	6" Elm
9	95	30	7" Bass
Sta. 51+00 to Sta. 53+00			
1	17	17	10" Iron
2	48	12	6" "
3	36	31	8" Elm
4	57	12	7" Iron
5	62	9	10" "
6	77	9	12" Elm
7	83	8	18" Syc.
8	00	11	12" Walnut
9	19	6	16" Elm
10	87	18	14" Maple
Sta. 53+00 to Sta. 57+00			
1	1	6	8" Elm
2	47	6	8" "
3	65	7	8" "
4	79	28	16" Hickory
5	11	19	16" "
6	43	20	10" Ash
7	61	15	26" Elm
8	72	18	14" "
9	98	20	8" Ash

TREES

NO	PLUS	OUT	SIZE & KIND
1	47	26	16" Walnut
2	4	27	10" Elm
3	8	16	8" Catalpa
4	24	16	8" "
5	29	24	10" Walnut
6	31	25	12" Elm
7	40	15	8" Catalpa
8	50	25	10" Elm
9	55	15	8" Catalpa
Sta. 42+00 to Sta. 45+00			
1	9	12	18" Ash
2	10	23	18" "
3	18	21	6" "
4	34	24	8" Elm
5	63	24	6" Ash
6	92	21	14" Elm
7	17	13	28" Catalpa
8	42	29	18" Oak
9	44	12	8" Catalpa
10	75	12	12" "
11	91	11	10" "
12	92	26	6" Elm
Sta. 45+00 to Sta. 47+00			
1	23	12	10" Catalpa
2	26	20	18" Elm
3	48	26	8" Ash
4	55	10	12" Catalpa
5	57	26	10" Elm
6	66	23	14" Elm
7	87	12	12" Catalpa
8	96	26	14" Elm
9	74	26	12" Maple
10	97	23	12" Elm
Sta. 47+00 to Sta. 48+00			
1	23	12	10" Catalpa
2	26	20	18" Elm
3	48	26	8" Ash
4	55	10	12" Catalpa
5	57	26	10" Elm
6	66	23	14" Elm
7	87	12	12" Catalpa
8	96	26	14" Elm
9	74	26	12" Maple
10	97	23	12" Elm
Sta. 48+00 to Sta. 49+00			
1	3	10	8" Catalpa
2	19	9	12" "
3	32	27	8" Ash
4	42	27	12" Elm
5	64	27	12" "
6	83	7	12" Catalpa
7	99	7	10" "
Sta. 49+00 to Sta. 50+00			
1	15	7	8" Catalpa
2	16	28	10" Elm
3	20	27	12" "
4	30	28	16" "
5	31	7	14" Catalpa
6	34	29	12" Ash
7	47	27	8" "
8	47	7	8" Catalpa
9	61	27	8" Elm
10	65	8	8" Catalpa
11	69	27	14" Elm
12	90	11	36" Oak
Sta. 50+00 to Sta. 51+00			
1	11	8	8" Catalpa
2	14	28	8" Ash
3	32	28	10" Elm
4	42	9	8" Catalpa
5	30	27	10" Ash
6	65	15	88" Ash
7	78	29	14" "
8	93	6	6" Elm
9	95	30	7" Bass
Sta. 51+00 to Sta. 53+00			
1	17	17	10" Iron
2	48	12	6" "
3	36	31	8" Elm
4	57	12	7" Iron
5	62	9	10" "
6	77	9	12" Elm
7	83	8	18" Syc.
8	00	11	12" Walnut
9	19	6	16" Elm
10	87	18	14" Maple
Sta. 53+00 to Sta. 57+00			
1	1	6	8" Elm
2	47	6	8" "
3	65	7	8" "
4	79	28	16" Hickory
5	11	19	16" "
6	43	20	10" Ash
7	61	15	26" Elm
8	72	18	14" "
9	98	20	8" Ash

SEC. 33, T. 7 N., R. 12 E.
LAKE TWP.

RD. TR. 44, T. 6 N., R. 12 E.
TROY TWP.

SEC. 32, T. 7 N., R. 12 E.
LAKE TWP.

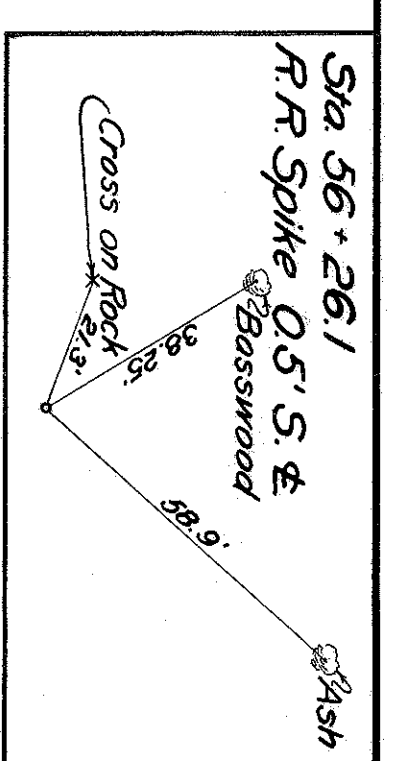
WOOD COUNTY
S.H. 439
R/W PLANS

RD. TR. 45, T. 6 N., R. 12 E.
TROY TWP.

RD. TR. 48, T. 6 N., R. 12 E.
TROY TWP.

ROAD TRACT 45
John R. & Mable Erch
Theodore A. Miller
ROAD TRACT 48

ROAD TRACT 44
Arthur C. Hagg
24 & COUNTY ROAD N.E. 1/4 E.
Lucky Rd.
John R. & Mable Erch
ROAD TRACT 45



Edith Scott
Earl E. Bruning

TREES				TREES			
NO	VAL	OUT	SIZE & KIND	NO	VAL	OUT	SIZE & KIND
Sta. 72+00 to Sta. 87+00				Sta. 57+00 to Sta. 38+00			
1	17	16	8" Elm	2	41	20	13" "
2	76	29	7" "	3	64	24	14" "
3	32	26		4	69	13	12" "
Sta. 58+00 to Sta. 60+00				Sta. 57+00 to Sta. 38+00			
1	5	16	8" Ash	5	81	20	12" Elm
2	12	18	16" Elm	6	81	29	16" "
3	33	18	8" "	7	83	18	14" "
4	80	20	14" Ash	8	96	19	6" "
5	78	19	12" "	9	96	21	8" "
6	79	25	2-18" Syc's	Sta. 60+00 to Sta. 62+00			
7	83	25	14" Elm	1	6	22	12" Elm
8	3	19	14" "	2	11	22	10" Wal.
9	18	18	8" Bass	3	33	22	12" Elm
10	73	21	12" Elm	4	36	18	10" "
Sta. 60+00 to Sta. 62+00				Sta. 62+00 to Sta. 64+00			
1	19	25	8" Ash	5	38	23	10" Ash
2	26	21	8" "	6	62	22	10" Elm
3	37	28	12" Elm	7	100	25	12" "
4	43	25	7" "	8	22	21	8" Buttern
5	55	30	8" Syc	9	46	24	12" Elm
6	59	22	8" Ash	10	71	24	8" Ash
7	85	24	14" "	11	90	25	10" Elm
8	85	25	6" "	12	88	29	10" Buttern
9	7	20	10" Elm	13	99	23	12" Ash
10	39	26	14" Ash	Sta. 62+00 to Sta. 64+00			
Sta. 64+00 to Sta. 66+00				Sta. 64+00 to Sta. 66+00			
1	31	29	12" Elm	1	19	25	8" Ash
2	32	16	10" "	2	26	21	8" "
3	50	15	8" "	3	37	28	12" Elm
4	65	16	12" "	4	43	25	7" "
5	81	29	8" Walnut	5	55	30	8" Syc
6	92	29	12" Elm	6	59	22	8" Ash
7	99	16	12" "	7	85	24	14" "
8	12	18	10" "	8	85	25	6" "
9	83	29	8" Apple	9	7	20	10" Elm
Sta. 66+00 to Sta. 72+00				Sta. 66+00 to Sta. 72+00			
1	21	29	6" Apple	10	39	26	14" Ash
2	39	16	12" Elm	Sta. 64+00 to Sta. 66+00			
3	52	29	6" Apple	1	31	29	12" Elm
4	58	16	14" Elm	2	32	16	10" "
5	88	29	6" Apple	3	50	15	8" "
				4	65	16	12" "
				5	81	29	8" Walnut
				6	92	29	12" Elm
				7	99	16	12" "
				8	12	18	10" "
				9	83	29	8" Apple

Rd. TR. 48, T. 6N., R. 12E.
TROY TWP.

SEC. 33, T. 7N., R. 12E.
LAKE TWP.

ROAD TRACT 48
Theodore A. Miller
R. 89.35
SECTION 4
Lake Erie Public
R. 38.85
Vern M. & Verna P. Self

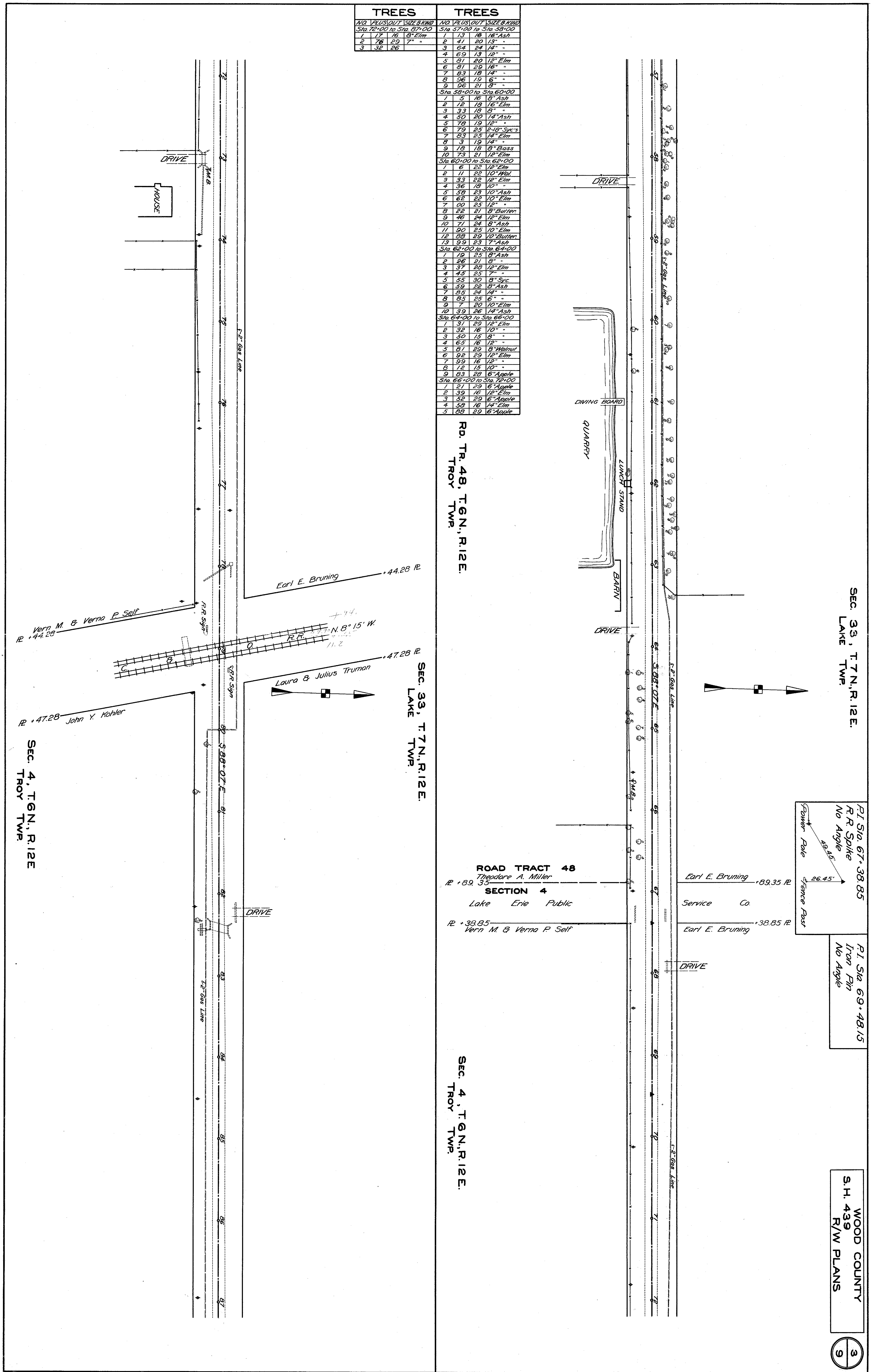
SEC. 4, T. 6N., R. 12E.
TROY TWP.

SEC. 33, T. 7N., R. 12E.
LAKE TWP.

P.I. Sta. 67+38.85
R.R. Spike
No Angle
49.45'
26.45'

P.I. Sta. 69+48.15
Iron Pin
No Angle

WOOD COUNTY
S.H. 439
R/W PLANS



SEC. 33, T.7N., R.12E.
LAKE TWP.

Sta. 93+87.5
Iron Pipe
16'

WOOD COUNTY
S.H. 439
R/W PLANS

TREES

NO	VAL	OUT	SIZE	SP. KIND
Sta. 87+00 to Sta. 96+00				
1	48	18	14"	Pop.
2	64	20	12"	Elm.
3	13	16	12"	Pop.
4	37	11	10"	Ash
5	83	11	8"	"
6	73	22	10"	Catalpa
7	97	22	8"	"
8	24	22	8"	"
9	48	22	6"	"
10	72	22	6"	"
11	97	21	6"	"
Sta. 96+00 to Sta. 98+00				
1	22	22	8"	Catalpa
2	42	26	8"	"
3	43	22	6"	"
4	70	22	6"	"
5	94	22	8"	"
6	99	27	8"	"
7	18	22	8"	"
8	24	26	10"	"
9	41	22	8"	"
10	49	26	8"	"
11	63	22	8"	"
12	90	22	6"	"
13	98	26	10"	"
Sta. 98+00 to Sta. 100+00				
1	15	22	6"	Catalpa
2	47	27	8"	"
3	63	22	6"	"
4	71	27	12"	"
5	97	22	8"	"
6	96	27	8"	"
7	20	27	10"	"
8	69	27	8"	"
9	95	27	8"	"
Sta. 100+00 to Sta. 102+00				
1	18	27	8"	Catalpa
2	43	27	8"	"
3	67	27	10"	"
4	82	27	8"	"
5	16	27	8"	"
6	41	27	12"	"
7	66	27	8"	"
8	89	27	6"	"

TREES

NO	VAL	OUT	SIZE	SP. KIND
Sta. 102+00 to Sta. 106+00				
1	13	26	8"	Catalpa
2	38	26	8"	"
3	62	26	8"	"
4	86	26	8"	"
5	71	26	8"	"
6	71	28	14"	"
7	00	27	16"	"
8	54	28	16"	Wickery
9	83	28	30"	Stump
Sta. 106+00 to Sta. 109+00				
1	56	27	12"	Catalpa
2	77	27	15"	"
3	00	27	10"	"
4	49	27	8"	"
5	73	27	10"	"
6	21	27	8"	"
7	46	27	8"	"
8	71	27	8"	"
9	35	27	13"	"
Sta. 109+00 to Sta. 114+00				
1	74	24	14"	Catalpa
2	21	23	14"	"
3	45	23	8"	"
4	18	23	8"	"
5	42	23	8"	"
6	66	23	8"	"
7	90	23	8"	"
8	87	23	12"	"
9	11	24	10"	"
10	35	26	10"	"
Sta. 114+00 to Sta. 117+00				
1	33	24	10"	Catalpa
2	83	24	10"	"
3	98	24	10"	"
4	15	24	10"	"
5	39	24	10"	"
6	88	24	10"	"
7	97	25	18"	Oak
8	12	24	8"	Catalpa
9	60	24	10"	"
10	85	24	8"	"

SEC. 4, T.6N., R.12E.
TROY TWP.

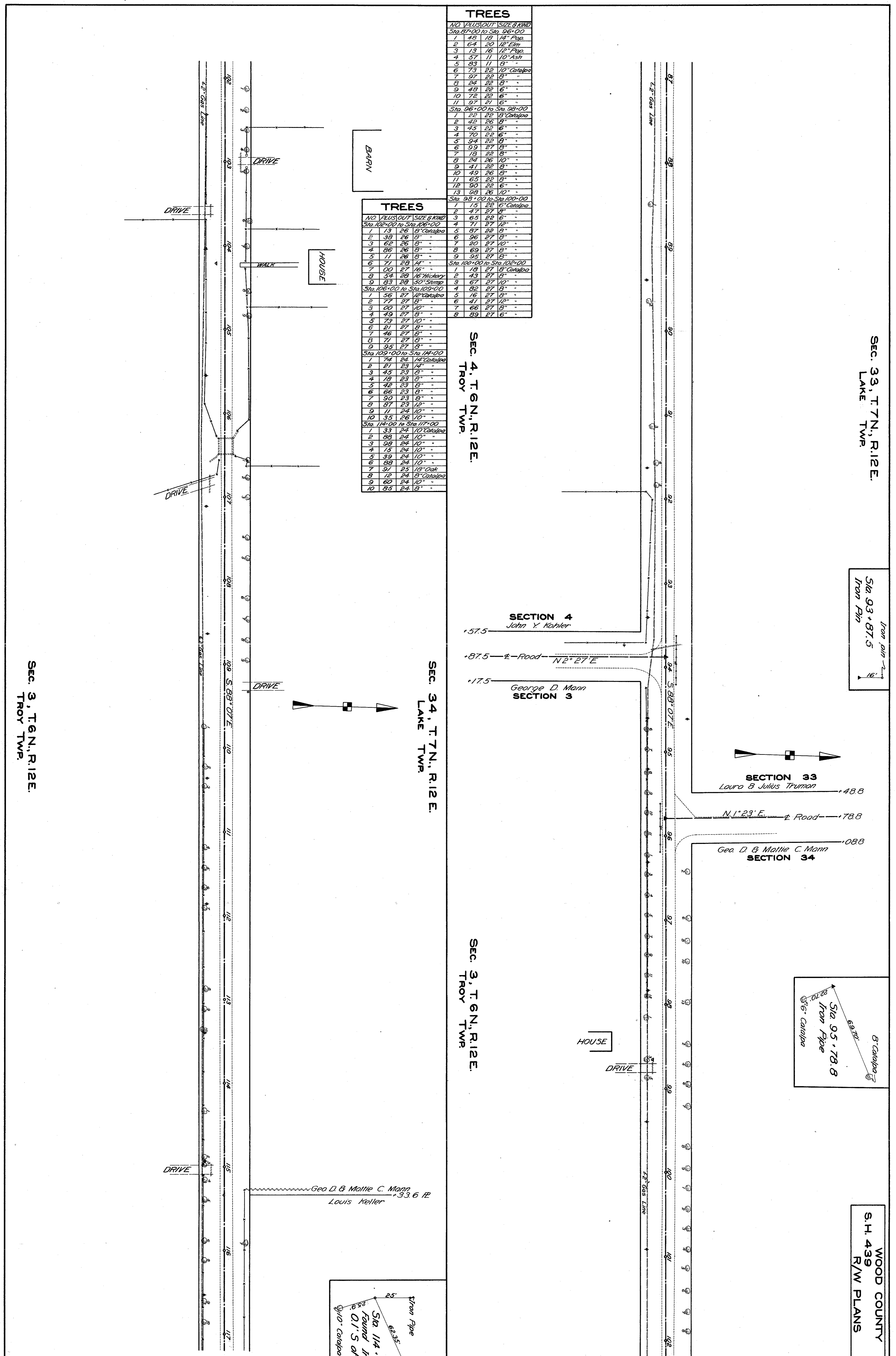
SECTION 4
John Y. Kohler
+57.5
+87.5 — Road — N2° 27' E
+17.5
George D. Mann
SECTION 3

SEC. 3, T.6N., R.12E.
TROY TWP.

SECTION 33
Laura & Julius Truman
+48.8
+78.8
N.1° 23' E. — Road —
+88.8
Geo. D. & Mattie C. Mann
SECTION 34

8" Catalpa
69.70'
Sta. 95+78.8
Iron Pipe
22.70'
5'6" Catalpa

Iron Pipe
25'
Sta. 114+33.6
Found Iron Pm
68.35'
5'6" Catalpa
10'0" Catalpa
24" Oak



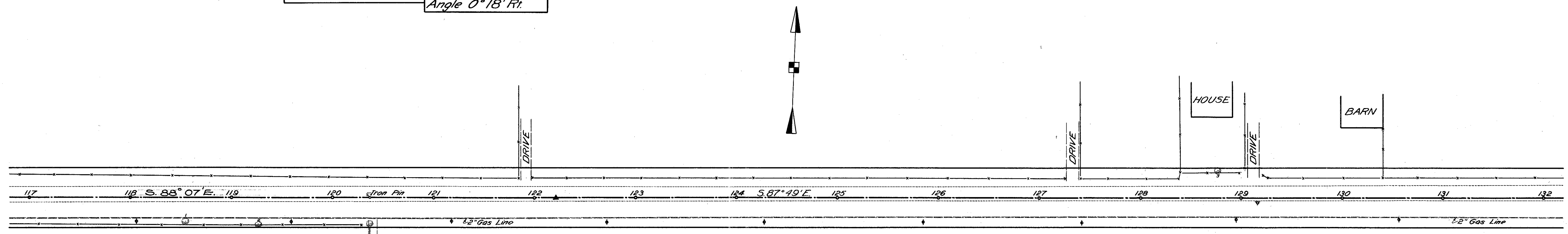
SEC. 3, T.6N., R.12E.
TROY TWP.

Geo. D. & Mattie C. Mann
+33.6 IR
Louis Keller

Sta. 120+37.7
Iron Pin
0.45' N. of \pm
Catalpa

P.I. Sta. 122+21.3
Conc. Marker Conc. Marker
Iron Stake
Angle 0° 18' Rt.

SEC. 34, T. 7 N., R. 12 E.
LAKE TWP.

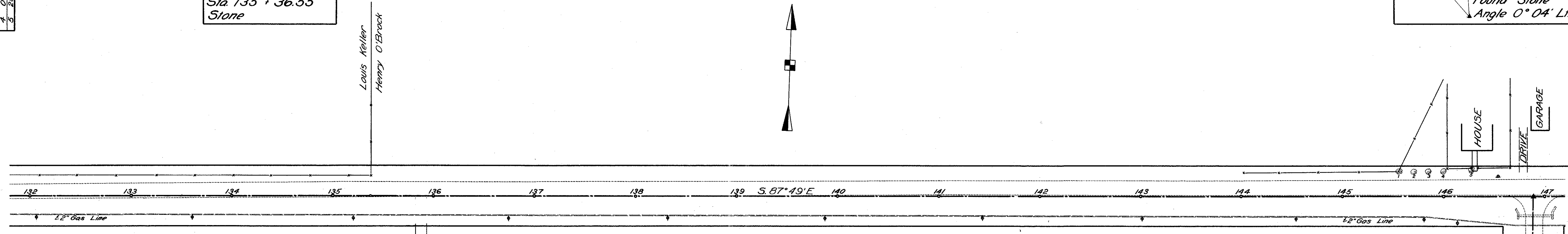


SEC. 3, T. 6 N., R. 12 E.
TROY TWP.

SEC. 34, T. 7 N., R. 12 E.
LAKE TWP.

House Garage
P.I. Sta. 146+88.8
Found Stone
Angle 0° 04' Lt.

Conc. Marker Iron Post
Conc. Marker
Sta. 135+36.55
Stone



SEC. 3, T. 6 N., R. 12 E.
TROY TWP.

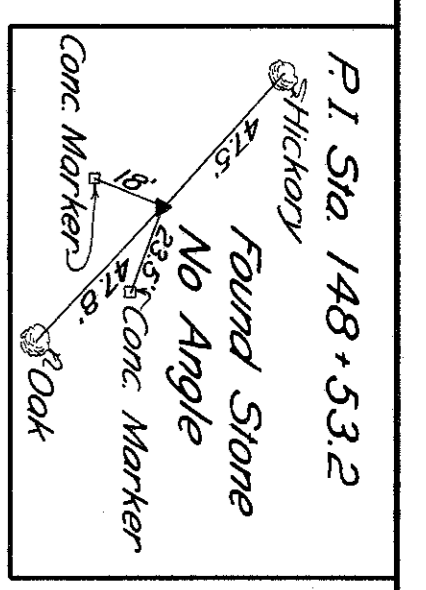
SECTION 3
Fred J. Recker

158.8
188.8-± ROAD N. 3° 06' E.
188.8

TREES	
143	PL. 15' OUT - 5' 8" WIND
144	PL. 15' OUT - 5' 8" WIND
145	PL. 15' OUT - 5' 8" WIND
146	PL. 15' OUT - 5' 8" WIND
147	PL. 15' OUT - 5' 8" WIND
148	PL. 15' OUT - 5' 8" WIND
149	PL. 15' OUT - 5' 8" WIND
150	PL. 15' OUT - 5' 8" WIND
151	PL. 15' OUT - 5' 8" WIND
152	PL. 15' OUT - 5' 8" WIND
153	PL. 15' OUT - 5' 8" WIND
154	PL. 15' OUT - 5' 8" WIND
155	PL. 15' OUT - 5' 8" WIND
156	PL. 15' OUT - 5' 8" WIND
157	PL. 15' OUT - 5' 8" WIND
158	PL. 15' OUT - 5' 8" WIND
159	PL. 15' OUT - 5' 8" WIND
160	PL. 15' OUT - 5' 8" WIND
161	PL. 15' OUT - 5' 8" WIND
162	PL. 15' OUT - 5' 8" WIND
163	PL. 15' OUT - 5' 8" WIND
164	PL. 15' OUT - 5' 8" WIND
165	PL. 15' OUT - 5' 8" WIND
166	PL. 15' OUT - 5' 8" WIND
167	PL. 15' OUT - 5' 8" WIND
168	PL. 15' OUT - 5' 8" WIND
169	PL. 15' OUT - 5' 8" WIND
170	PL. 15' OUT - 5' 8" WIND
171	PL. 15' OUT - 5' 8" WIND
172	PL. 15' OUT - 5' 8" WIND
173	PL. 15' OUT - 5' 8" WIND
174	PL. 15' OUT - 5' 8" WIND
175	PL. 15' OUT - 5' 8" WIND
176	PL. 15' OUT - 5' 8" WIND
177	PL. 15' OUT - 5' 8" WIND
178	PL. 15' OUT - 5' 8" WIND
179	PL. 15' OUT - 5' 8" WIND
180	PL. 15' OUT - 5' 8" WIND
181	PL. 15' OUT - 5' 8" WIND
182	PL. 15' OUT - 5' 8" WIND
183	PL. 15' OUT - 5' 8" WIND
184	PL. 15' OUT - 5' 8" WIND
185	PL. 15' OUT - 5' 8" WIND
186	PL. 15' OUT - 5' 8" WIND
187	PL. 15' OUT - 5' 8" WIND
188	PL. 15' OUT - 5' 8" WIND
189	PL. 15' OUT - 5' 8" WIND
190	PL. 15' OUT - 5' 8" WIND
191	PL. 15' OUT - 5' 8" WIND
192	PL. 15' OUT - 5' 8" WIND
193	PL. 15' OUT - 5' 8" WIND
194	PL. 15' OUT - 5' 8" WIND
195	PL. 15' OUT - 5' 8" WIND
196	PL. 15' OUT - 5' 8" WIND
197	PL. 15' OUT - 5' 8" WIND
198	PL. 15' OUT - 5' 8" WIND
199	PL. 15' OUT - 5' 8" WIND
200	PL. 15' OUT - 5' 8" WIND

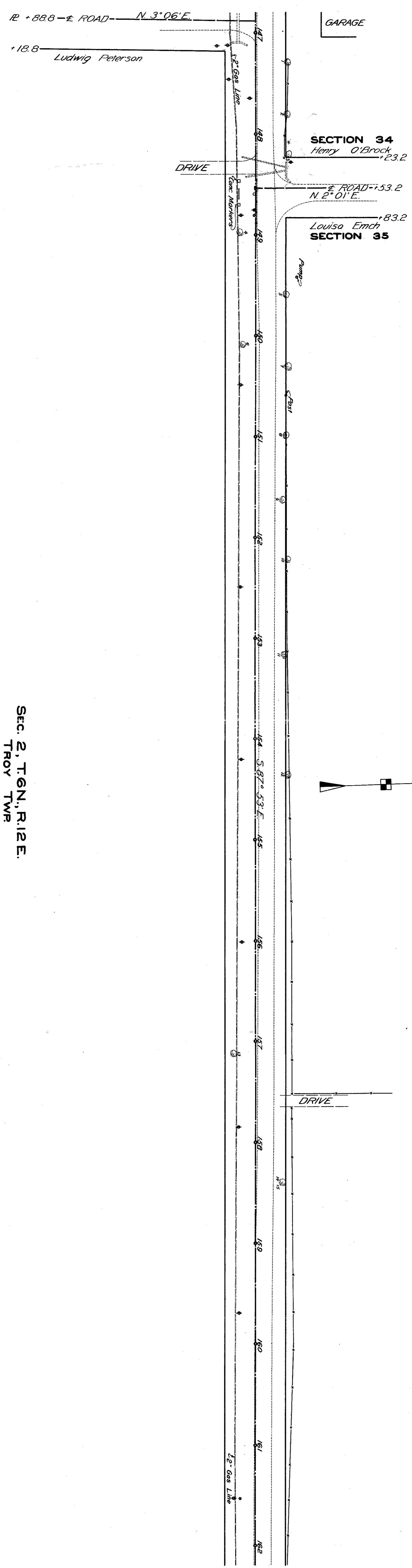
TREES			
NO.	PLUS	OUT	SIZE & KIND
1	32	25	16" Oak
2	13	24	9" Elm
3	51	28	40" Willow
4	81	26	18" Syc

TREES			
NO.	PLUS	OUT	SIZE & KIND
1	29	32	12" Apple
2	80	31	16" Hickory
3	20	33	12" Apple
4	90	15	6" Oak
5	59	30	24" Oak
6	8	12	15" Apple
7	30	32	8" Apple
8	29	30	18" Ash
9	63	28	18" Hickory
10	21	31	10"
11	16	29	20" Elm
12	35	32	36" Syc
13	12	21	24" Oak
14	39	27	6" Elm
15	39	27	2-4"



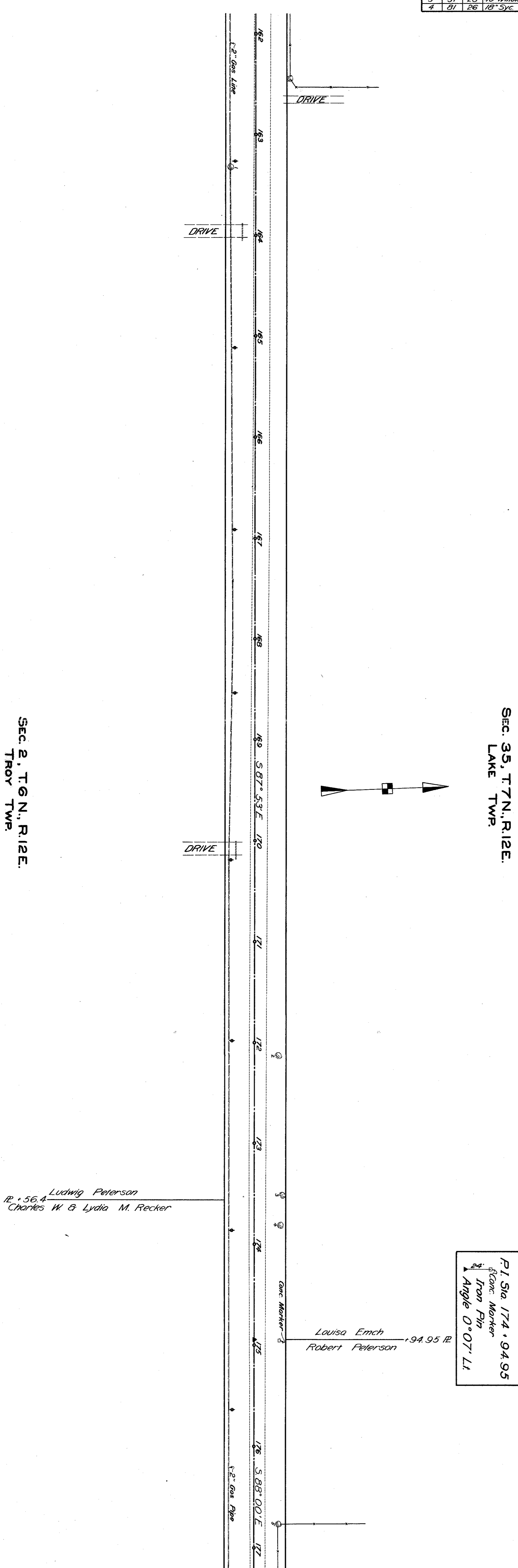
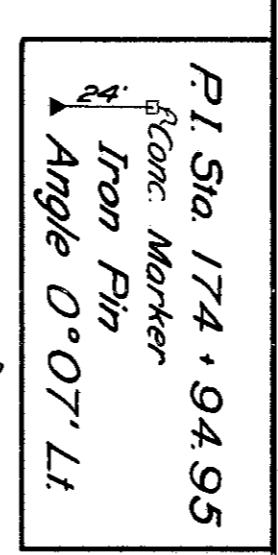
SEC. 35, T. 7N, R. 12E.
LAKE TWP.

WOOD COUNTY
S. H. 439
R/W PLANS



SEC. 2, T. 6N, R. 12E.
TROY TWP.

SEC. 35, T. 7N, R. 12E.
LAKE TWP.



SEC. 2, T. 6N, R. 12E.
TROY TWP.

TREES			TREES		
NO	PLUS/OUT	SIZE & KIND	NO	PLUS/OUT	SIZE & KIND
1	79	30 1/4" Catalpa	1	71	23 1/4" Catalpa
2	53	33 1/2" Oak	2	27	23 6"
3	86	29 1/4" Catalpa	3	74	23 6"
4	89	26 20" Willow	4	89	26 20" Willow
5	80	25 40"	5	80	25 40"
6	36	21 8" Ash	6	36	21 8" Ash
7	76	24 3/8" Willow	7	76	24 3/8" Willow
8	65	15 1/2" Ash	8	65	15 1/2" Ash
9	5	26 1/2" Apple	9	5	26 1/2" Apple
10	32	27 1/4"	10	32	27 1/4"
11	46	27 24" Cotton	11	46	27 24" Cotton
12	57	27 10" Maple	12	57	27 10" Maple
13	92	27 24"	13	92	27 24"
14	36	22 1/4" Catalpa	14	36	22 1/4" Catalpa
15	70	23 6"	15	70	23 6"
16	1	24 7" Hickory	16	1	24 7" Hickory
17	21	24 7"	17	21	24 7"
18	58	25 24" Oak	18	58	25 24" Oak
19	97	25 1/2" Catalpa	19	97	25 1/2" Catalpa
20	83	25 1/2"	20	83	25 1/2"
21	19	27 5" Syc.	21	19	27 5" Syc.

SEC. 2, T.6N., R.12E.
TROY TWP.

SEC. 35, T.7N., R.12E.
LAKE TWP.

SEC. 2, T.6N., R.12E.
TROY TWP.

SEC. 35, T.7N., R.12E.
LAKE TWP.

SECTION 2
Charles W. & Lydia M. Recker
94

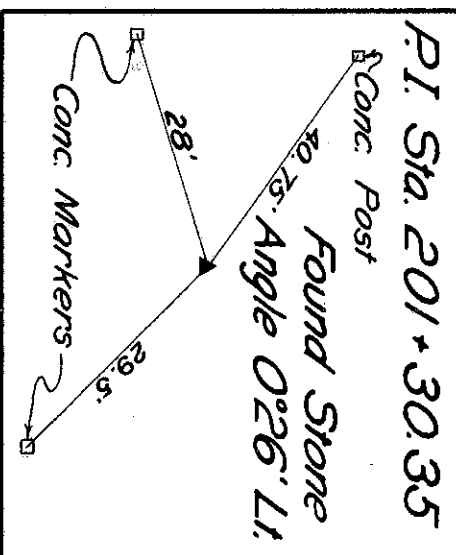
.24 - E ROAD - N. 2° 49' E

.54
Bringman Hanes
SECTION 1

SECTION 35
Anna Obermeyer
00.35

BLADNER
E ROAD - 30.35

George J. Bringman
SECTION 36
60.35



SEC. 36, T.7N., R.12E.
LAKE TWP.

SEC. 1, T.6N., R.12E.
TROY TWP.

WOOD COUNTY
S.H. 439
R/W PLANS

SEC. 36, T.7N., R.12E.
LAKE TWP.

SEC. 1, T.6N., R.12E.
TROY TWP.

SEC. 36, T.7N., R.12E.
LAKE TWP.

SEC. 1, T.6N., R.12E.
TROY TWP.

George J. Ervingman
Rosa Reinhardt
R. 37 R.

Ervingman Hones
George S. Baker
R. 70 R.

22.57' Fred & Sophie Schulte
46.41' Fred & Sophie Schulte
N 34° 34' W
ZENZIS MANIA
OLD
SWITCH
R.R.

George S. Baker
104.49 R.

104.49 R.
Fred Schulte
SHANTY
SHANTY

Set Stone
30'
P.I. Sta. 227+45.15
Found Stone
Angle 0° 01' Rt.
Set Stone
32'

DRIVE
Rosa Reinhardt
Fred & Sophie Schulte
Stone

DRIVE

DRIVE

HOUSE

HOUSE

BARN

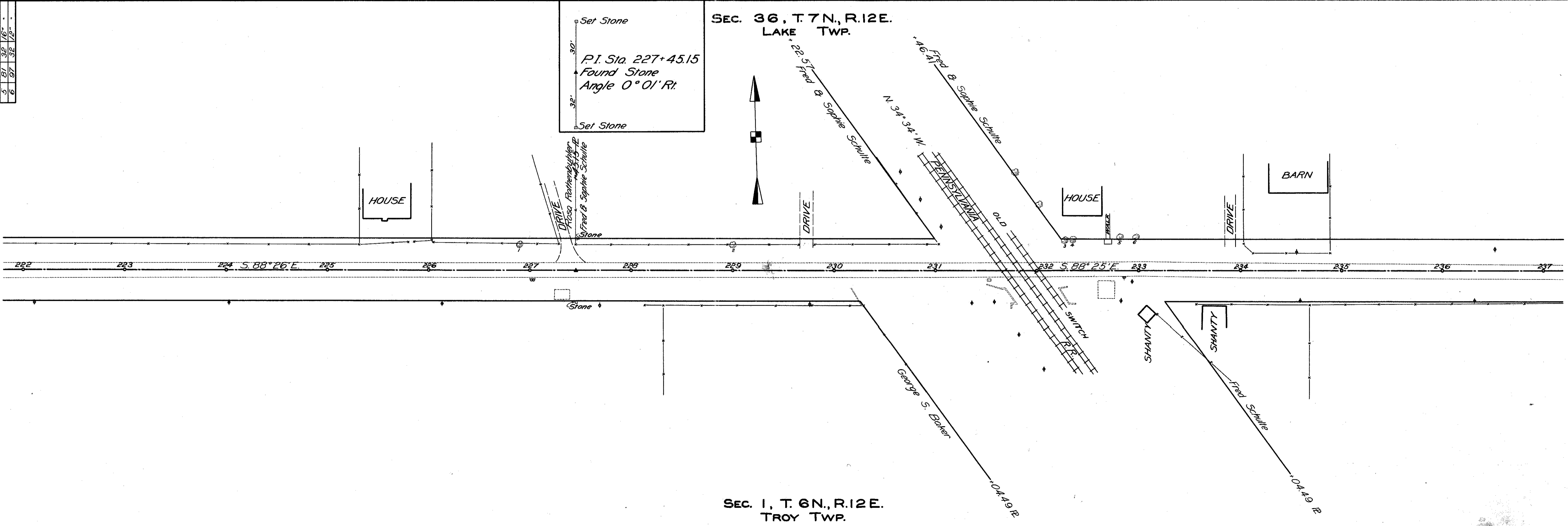
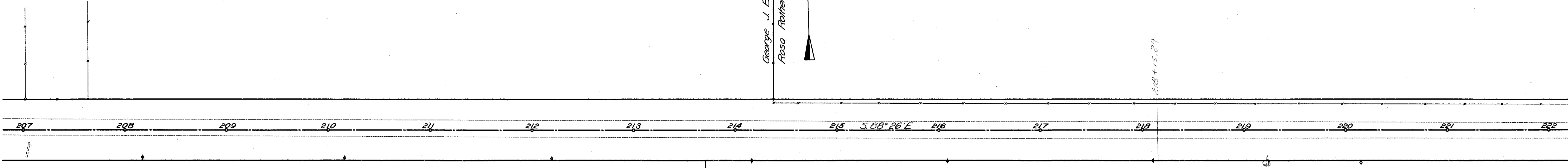
Stone

SWITCH

SHANTY

SHANTY

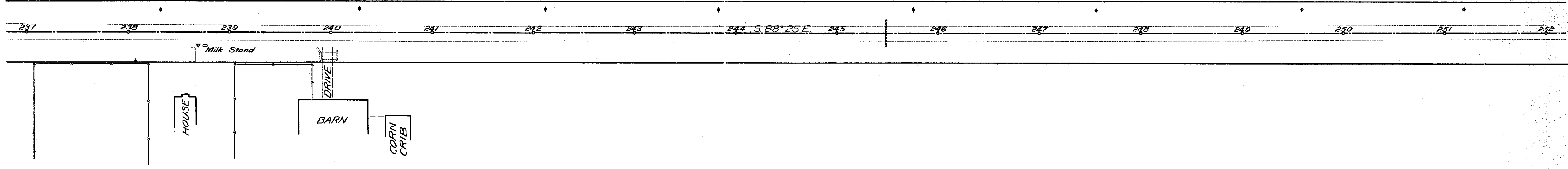
TREES		TREES	
NO.	PLANT	NO.	PLANT
1	10'	1	10'
2	10'	2	10'
3	10'	3	10'
4	10'	4	10'
5	10'	5	10'
6	10'	6	10'



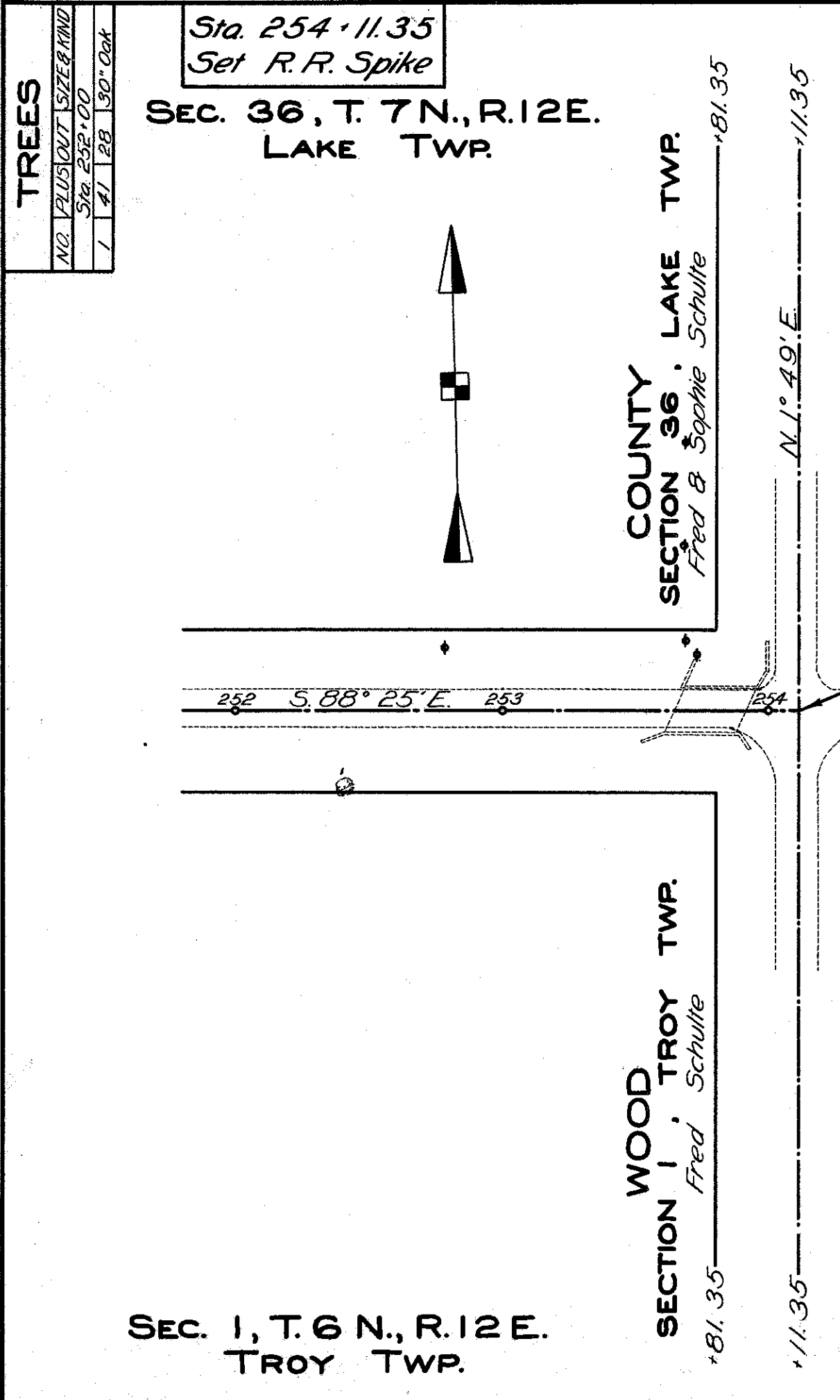
SEC. 36, T.7N.,R.12E.
LAKE TWP.

WOOD - COUNTY
S. H. 439
R/W PLANS

9
9



SEC. 1, T.6N.,R.12E.
TROY TWP.



SEC. 1, T.6 N., R.12 E.
TROY TWP.

WOOD COUNTY
SECTION 1, TROY TWP.
Fred Schulte
181.35

COUNTY 36 LAKE TWP.
Fred & Sophie Schulte
181.35

COUNTY

OTTAWA

End of Project
Sta. 254 + 11.35

D-32

D-32