

O.D.O.T. DISTRICT 2 SURVEY OFFICE (USE ONLY)

PERSONNEL

REFERENCE NO. 0

SHEET 1 OF 21

NOTES RHOADES

DATE 8/1/13

ROUTE SR 163

H.C. CODER

WEATHER CLOUDY

COUNTY WOOD

R.C. RHOADES

TEMP. 80°

TOWNSHIP TROY

SECTION RT 41

DWG BY NIESE

PID NO PID

T 6 N R 12 E

TYPE MONUMENT P.K. NAIL

ON SURFACE - ~~BELOW~~ ON

OFFSET Q PAVEMENT - LT : RT

- TO - EDGE PAVEMENT

STATION: 0+10.85

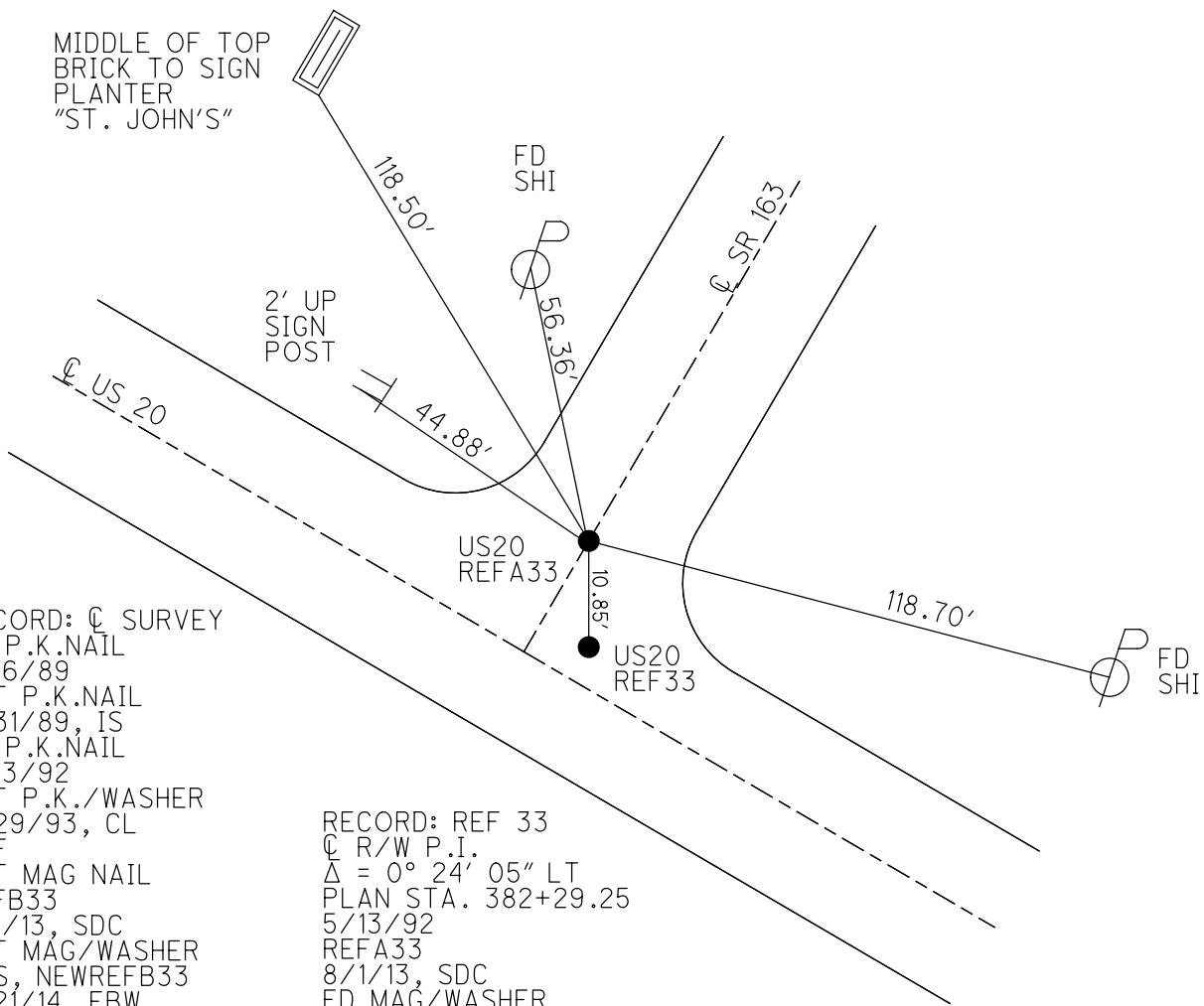
HORZ.DATUM: NAD83(2011)

GEOID: 2012A

GRID: NORTHING: 672291.008

EASTING: 1694090.089

RT 40	RT 41
RT 39	RT 42



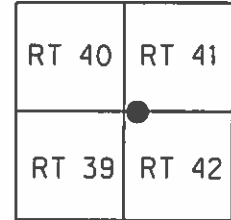
RECORD: Q SURVEY  
 FD P.K.NAIL  
 5/16/89  
 SET P.K.NAIL  
 7/31/89, IS  
 FD P.K.NAIL  
 5/13/92  
 SET P.K./WASHER  
 6/29/93, CL  
 DNF  
 SET MAG NAIL  
 REFB33  
 8/1/13, SDC  
 SET MAG/WASHER  
 GPS, NEWREFB33  
 8/21/14, EBW  
 FD MAG/WASHER  
 REF33  
 9/10/19, JFO

RECORD: REF 33  
Q R/W P.I.  
 $\Delta = 0^\circ 24' 05''$  LT  
 PLAN STA. 382+29.25  
 5/13/92  
 REFA33  
 8/1/13, SDC  
 FD MAG/WASHER  
 9/10/19, JFO  
 N = 672280.344  
 E = 1694091.699

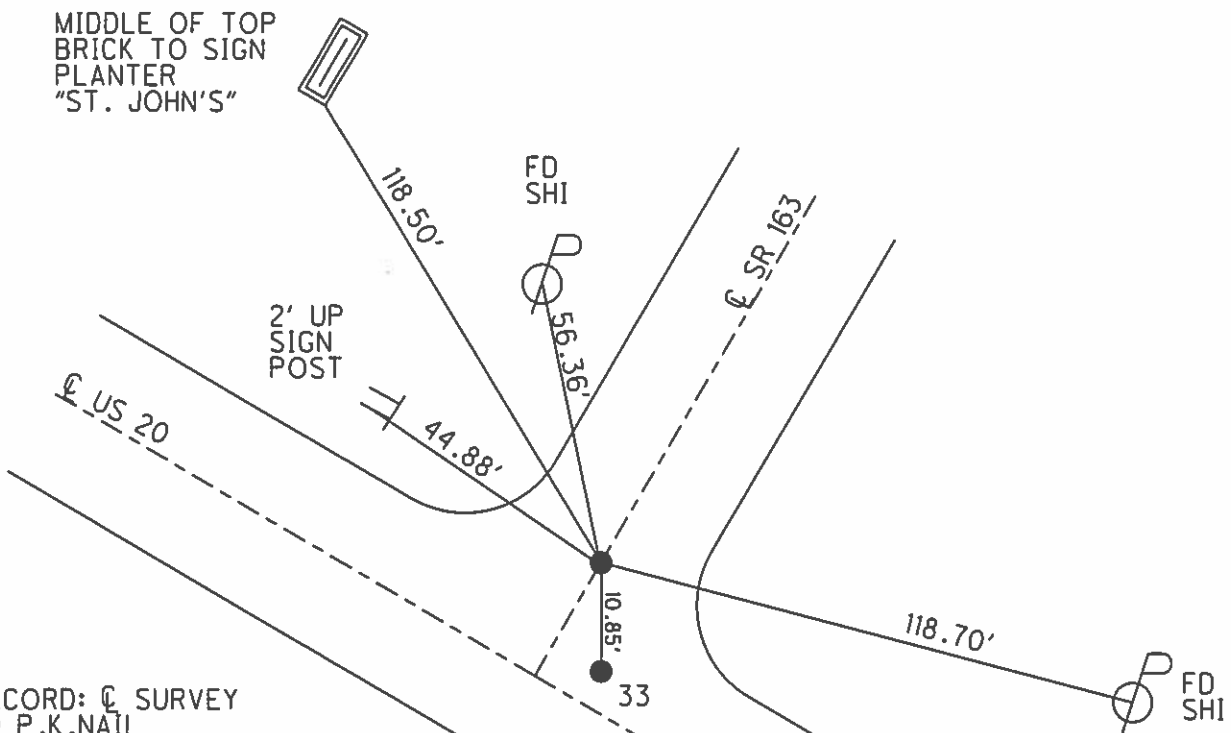
O.D.O.T. DISTRICT 2 SURVEY OFFICE (USE ONLY)

PERSONNEL \_\_\_\_\_ REFERENCE NO. 0 SHEET 1 OF 21  
 NOTES RHOADES DATE 8/1/13 ROUTE SR 163  
 H.C. CODER WEATHER CLOUDY COUNTY WOOD  
 R.C. RHOADES TEMP. 80° TOWNSHIP TROY  
 SECTION RT 41  
T 6 N R 12 E

TYPE MONUMENT P.K.NAIL  
 ON SURFACE - ~~BELOW~~ ON  
 LEFT - ☉ PAV'T - RIGHT -  
- TO - EDGE PAVEMENT  
 S.L.M. 0+10.85



Grid: Northing: 672291.008 Easting: 1694090.089



RECORD: ☉ SURVEY  
 FD P.K.NAIL  
 5/16/89  
 SET P.K.NAIL  
 7/31/89, IS  
 FD P.K.NAIL  
 5/13/92  
 SET P.K./WASHER  
 6/29/93, CL  
 DNF P.K.  
 SET MAG W/TIES  
 GPS, REFB33  
 8/1/13, SDC  
 SET MAG/WASHER  
 GPS, NEWREFB33  
 8/21/14, EBW

RECORD: REF 33  
 ☉ R/W P.I.  
 $\Delta = 0^\circ 24' 05''$  LT  
 PLAN STA. 382+29.25  
 5/13/92  
 GPS, REFA33  
 8/1/13, SDC  
 N = 672280.394  
 E = 1694091.589

# O.D.O.T. DISTRICT 2 SURVEY OFFICE

PERSONNEL \_\_\_\_\_

REFERENCE NO. "0"

SHEET 1 OF 14

NOTES 1. Stone

H.C. D. Curtis

DATE 16 May 89

ROUTE SR# 163

R.C. J. Hausbalder

WEATHER Cloudy

COUNTY Wood

TEMP. 52°

TOWNSHIP Troy

SECTION RT # 41

T \_\_\_\_\_ R \_\_\_\_\_

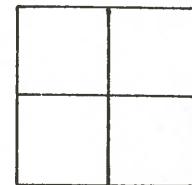
TYPE MONUMENT PK Nail

ON SURFACE - BELOW Surface

LEFT- & PAV'T. - RIGHT \_\_\_\_\_

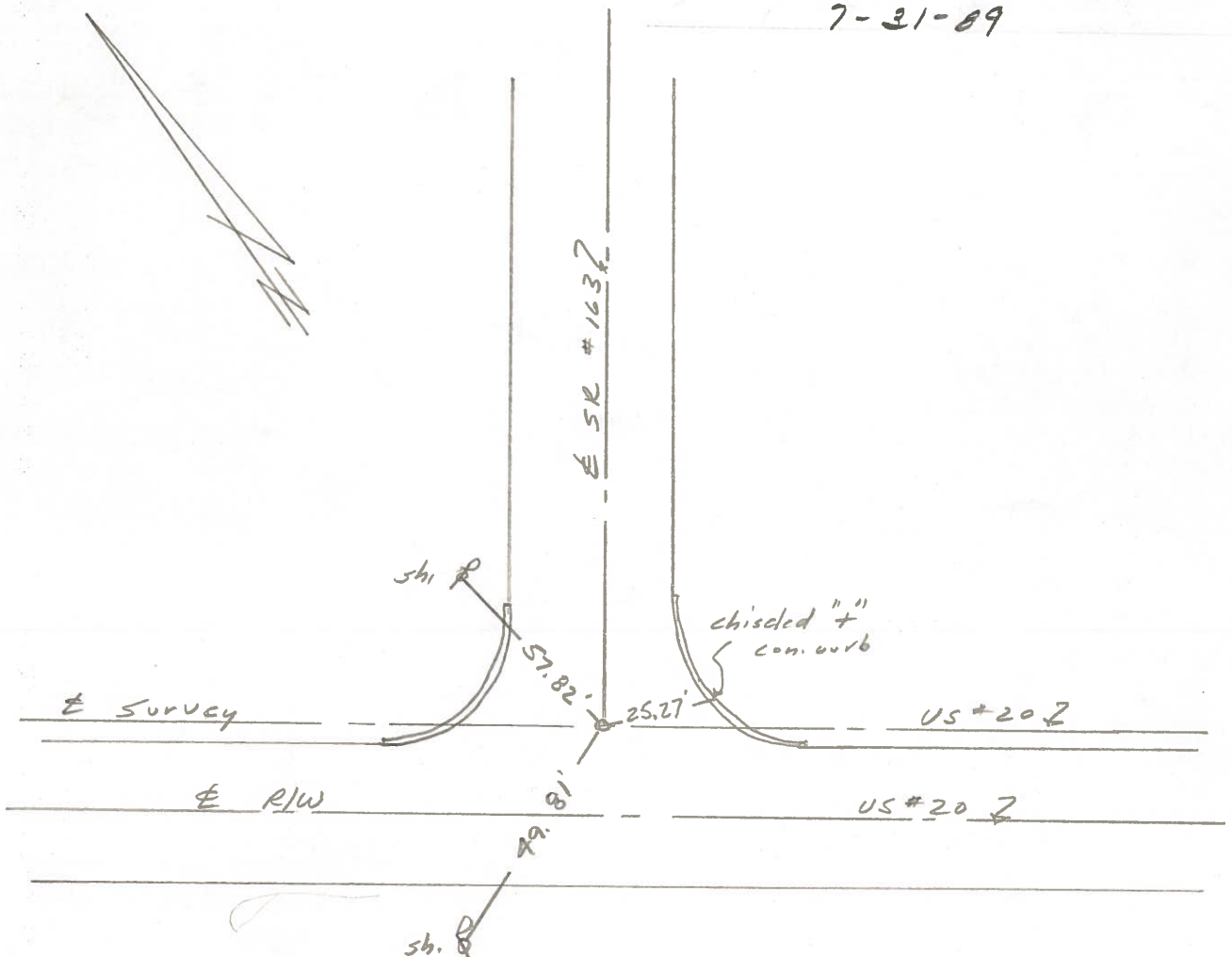
TO \_\_\_\_\_ EDGE PAVEMENT

S.L.M. 0+15



P.K. NAIL TO SURFACE

7-31-89



Q.D.O.T. DISTRICT 2 SURVEY OFFICE

Sht. 1 of     

County Wood S.R. 163

Date 5/20/81

Township T204

Weather                     

Section Road Tract 41 (5)

Temp.                     

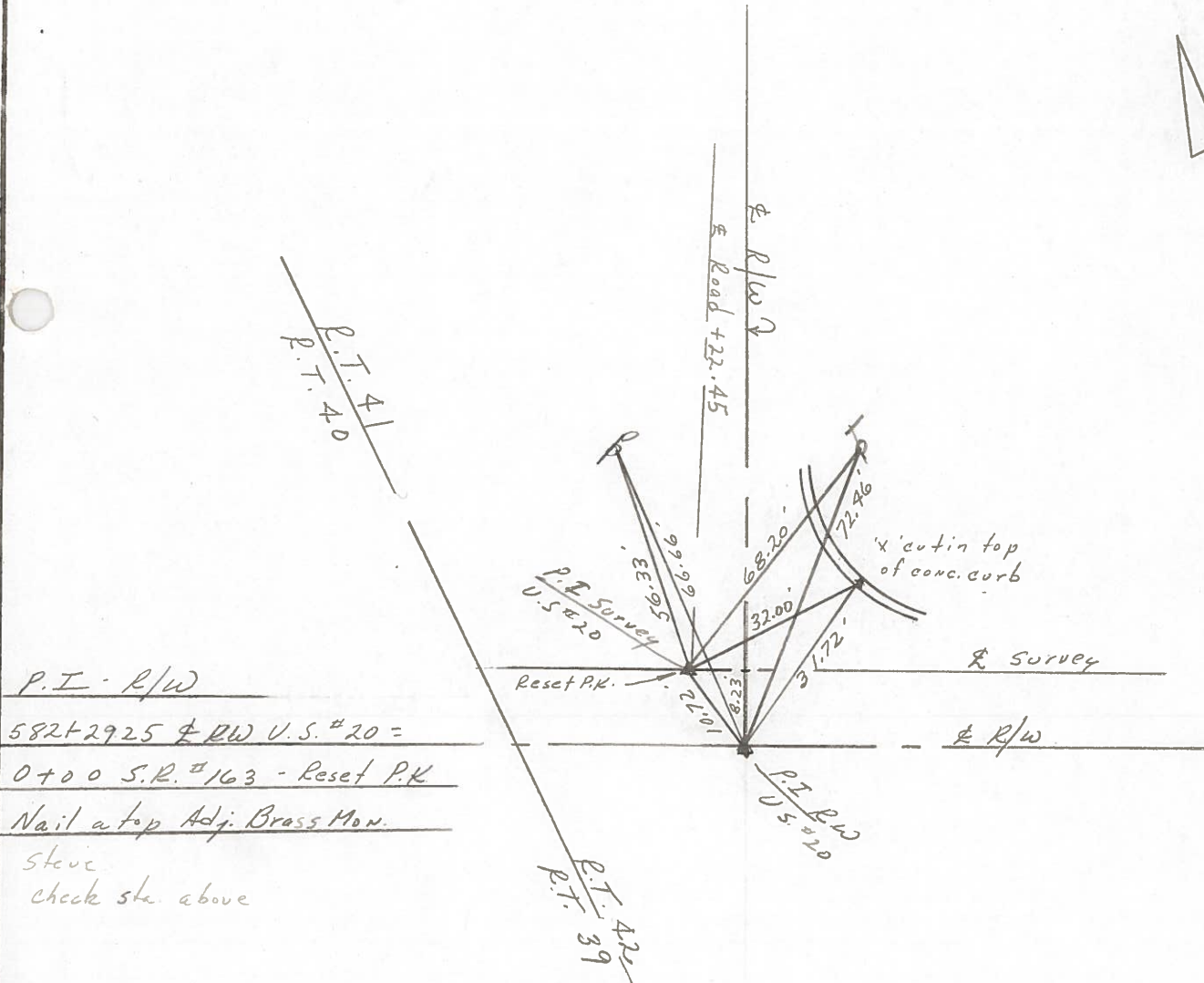
T6N, R12E

Personnel Cronin

R.T. 40	R.T. 41
R.T. 39	R.T. 42



# 0 (163) Geyman  
 # 33 (U.S. 20) Mosser  
Barbour



P.I. - R/W  
 582+2925 & RW U.S. # 20 =  
 0+00 S.R. # 163 - Reset P.K.  
 Nail a top Adj. Brass Mon.  
 Steve  
 check sta. above

PERSONNEL	TITLE	PERSONNEL	TITLE

COUNTY Wood DATE OK 1/6/57  
SWORDEN ✓ 4/11/60  
 S. R. #163 WEATHER  
Silvester 6/24/69  
 SEC. I TEMP

DESCRIPTION	LEFT	CENTER LINE	RIGHT	JOB NO.
Sta. 0+00 R.R. spike & U.S. #20 S.E. #163 (BRASS MON)	#311		Shiner in 28" maple S.E. 78 79 Shiner in 30" maple S. 73 75 Shiner in T.P. S.W. 42 Shiner in P.P. N.W. 66 Shiner in T.P. N.E. 72	
Sta. 0+59.97 X-on line stone N. line of U.S. #20 S.E. #163	#312 0	Did Not Find	Conc. hitching post gone E.N.E. 21 Shiner in 12" catalpa gone N.E. 48 Shiner in 30" maple N.W. 71 Cor. church steps (bottom) N.W. 95 95 Shiner in T.P. E. 29.61 X Top Curb S.E. 42.49 X Top Curb S.W. 48.44	
Sta. 3+23.2 R.R. spk. in pipe	#313	enclosed - E. 1/10/60 1/10/60	Shiner in 12" walnut N.E. 41 <del>N.E. Cor. 2nd. of parsonage S.W. 97</del> <del>S.E. Cor. Conc curb Bott. N.W. 90</del> Shiner in 10" walnut S.E. 62 68 Shiner in 18" Walnut E. 37	
Sta. 17+50 Iron pipe - 7.35' W of & Pavmt of road. 4.00	#314 OA		Shiner in 24" Catalpa S.W. 26.34 " " " " W. 17.65 " " " " N.W. 22.57 " " 30" walnut S. 58.42	
Sta. 29+94.1 R.R. spk. P.I.	#315 1A		Shiner in 8" butternut ✓ N.W. 50 56 Shiner in cor. post ✓ N.N.W. 31 Iron cor. post ✓ S.E. 28 Shiner in 14" maple ✓ S.E. 42 Shiner in P. Pole ✓ S.E. 30 Shiner in T. Pole S.S.W. 58 60 Shiner in T. Pole N.W. ✓ 27	

PERSONNEL	TITLE	PERSONNEL	TITLE

COUNTY Wood DATE 05/11/67  
 S. R. #163 SWORN 4/11/60  
 WEATHER 3-7-68  
 SEC. T. TEMP.

DESCRIPTION	LEFT	CENTER LINE	RIGHT	JOB NO.
Sta. 0+00 R.R. spike & 4.5" 20# S.R. #163 (BRASS MON)	#311		Shiner in 28" maple S.E. 78 Shiner in 30" maple S. 73 Shiner in T.P. S.W. 42 Shiner in P.P. N.W. 66 Shiner in T.P. N.E. 72	
Sta. 0+59.97 X on line stone N. line of 4.5" 20# S.R. #163	#312 0	Did Not Find	Conc. hitching post <sup>gone</sup> E.N.E. 21 Shiner in 12" catalpa <sup>gone</sup> N.E. 48 Shiner in 30" maple N.W. 71 Con church steps (bottom) N.W. 95	
Sta. 3+23.2 R.R. spk. in pipe	#313 +16	checked OK 3-17-68	Shiner in 12" walnut N.E. 41 <del>N.E. cor. d.m. of parsonage S.W. 77</del> <del>S.E. cor. Conc. curb Bott. N.W. 70</del> Shiner in 10" walnut S.E. 68.68 Shiner in 18" Walnut E. 37	
Sta. 17+50 Iron pipe - 7.35' W of L of road.	#314 OA	OK 3-5-68	shiner in P S.E. 47.80 Shiner in 24" tree N 22.60 " " " " W 17.63 " " 28" Tree SW 26.31	
Sta. 29+94.1 R.R. spk. P.I.	#315 IA	OK 3-7-68	Shiner in 8" butternut N.W. 55 Shiner in cor. post N.N.W. 31 Iron cor. post S.E. 28 Shiner in 14" maple S.E. 42 Shiner in P. Pole S.E. 30 Shiner in T. Pole S.S.W. 60 Shiner in T. Pole N.W. 27	

PERSONNEL	TITLE	PERSONNEL	TITLE	COUNTY	DATE
				Wood	OK 1/6/58
				S. R. #163	SWORDEN ✓ 4/11/60
				SEC. I.	WEATHER
					TEMP.

DESCRIPTION	LEFT	CENTER LINE	RIGHT	JOB NO.
Sta. 0+00 R.R. spike & U.S. #20¢ S.R. #163 (BRASS MON)	#311	OK 1/9/66 Morrison	Shiner in 28" maple S.E. 78.1 Shiner in 30" maple S. 79.2 Shiner in T.P. S.W. 73.3 Shiner in P.P. N.W. 73.5 Shiner in T.P. N.E. 42.8 Shiner in T.P. N.E. 66.0 Shiner in T.P. N.E. 72.4	
Sta. 0+59.97 X-on line stone N. line of U.S. #20¢ S.R. #163	#312 O	Did Not Find	Conc. hitching post gone E.N.E. 21.1 Shiner in 12" catalpa gone N.E. 48.8 Shiner in 30" maple N.W. 71.9 Cor. church steps (bottom) N.W. 95.5	
Sta. 3+23.2 R.R. spk. in pipe	#313	checked OK 1/19/66 Morrison	Shiner in 12" Walnut N.E. 41.1 N.E. Cor. Fdn. of parsonage S.W. 97.1 S.E. Cor. Conc. curb Bott. N.W. 90.1 Shiner in 10" Walnut S.E. 68.1 Shiner in 18" Walnut E. 37.5	
Sta. 17+50 Iron pipe - 7.35' W of & of road.	#314 OA			
Sta. 29+94.1 R.R. spk. P.I.	#315 EA	Ties OK 1/19/66	Shiner in 8" butternut N.W. 50.1 Shiner in cor. post N.N.W. 31.8 Iron cor. post S.E. 28.9 Shiner in 14" maple gone 1/19/66 S.E. 42.1 Shiner in P. Pole S.E. 30.1 Shiner in T. Pole S.S.W. 60.1 Shiner in T. Pole N.W. 27.1	

PERSONNEL TITLE PERSONNEL TITLE

COUNTY *ott. Wood* DATE

S. R. *163* WEATHER *Rain*

SEC. TEMP. *65°*

DESCRIPTION LEFT CENTER LINE RIGHT JOB NO.

*S.H. 439-S.R. 163  
From U.S. Rt. 20 to Ottawa Co. Line*



*Lake Twp. T7N-R12E*

*Troy Twp. T6N-R12E*

