

O.D.O.T. DISTRICT 2 SURVEY OFFICE (USE ONLY)

PERSONNEL

REFERENCE NO. 0 A

SHEET 2 OF 21

NOTES ASTON

DATE 10/12/23

ROUTE SR 163

H.C. NIESE

WEATHER CLOUDY

COUNTY WOOD

R.C. ASTON

TEMP. 60°

TOWNSHIP TROY

SECTION RT 41

DWG BY ASTON

PID CHIP SEAL

T 6 N R 12 E

TYPE MONUMENT MAG/WASHER

ON SURFACE - ~~BELOW~~ ON

OFFSET 5.1' TO LT EDGE PAVEMENT

5.1' TO LT EDGE PAVEMENT

STATION: 17+50.30

HORIZ.DATUM: NAD83(2011)

GEOID: NAVD88 2018

GRID: NORTHING: 673792.026

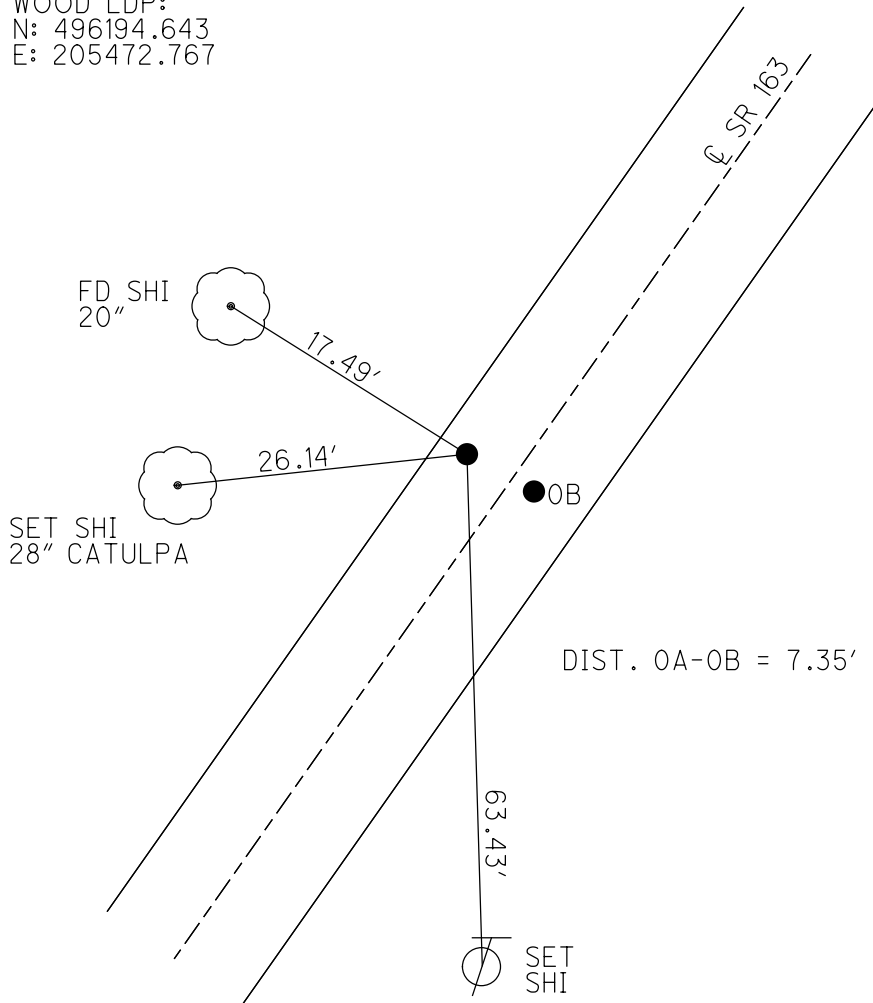
EASTING: 1694973.912

RT 40	RT 41
RT 39	RT 42



WOOD LDP:
N: 496194.643
E: 205472.767

RECORD:
STA.17+50.45
(RECORD AT WOOD CO.)
FD R.R.SPIKE
8/23/78, BURNSIDE
FD P.K.NAIL
5/16/89
SET P.K.NAIL
8/2/89, IS
FD P.K.NAIL
REFAO
8/1/13, SDC
SET MAG/WASHER
NEWREFAO
8/21/14, EBW
FD MAG/WASHER
REFAO
9/10/19, JFO
FD MAG/WASHER
REFOA
6-14-23, JMR
FD MAG/WASHER
10-12-23, TDN



O.D.O.T. DISTRICT 2 SURVEY OFFICE (USE ONLY)

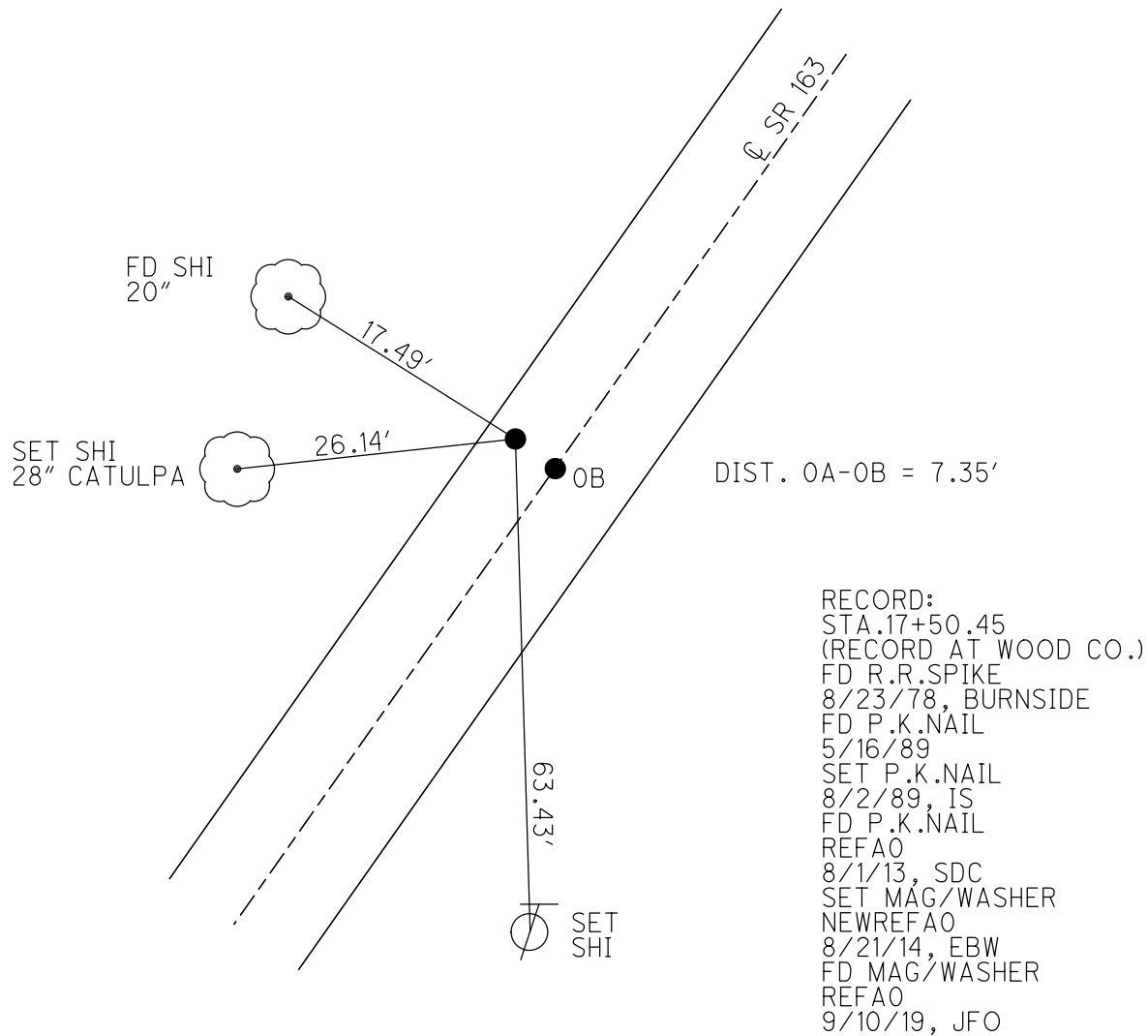
PERSONNEL _____ REFERENCE NO. 0 A SHEET 2 OF 21
 NOTES RHOADES DATE 8/1/13 ROUTE SR 163
 H.C. CODER WEATHER CLOUDY COUNTY WOOD
 R.C. RHOADES TEMP. 80° TOWNSHIP TROY
 DWG BY NIESE PID NO PID SECTION RT 41
 T 6 N R 12 E

TYPE MONUMENT P.K. NAIL
 ON SURFACE - ~~BELOW~~ ON _____
 OFFSET C PAVEMENT 5.1' LT : ~~RT~~
5.1' TO LT EDGE PAVEMENT
 STATION: 17+50.30

RT 40	RT 41
RT 39	RT 42



HORZ. DATUM: NAD83(2011) GEOID: 2012A
 GRID: NORTHING: 673792.026 EASTING: 1694973.912



RECORD:
 STA. 17+50.45
 (RECORD AT WOOD CO.)
 FD R.R. SPIKE
 8/23/78, BURNSIDE
 FD P.K. NAIL
 5/16/89
 SET P.K. NAIL
 8/2/89, IS
 FD P.K. NAIL
 REFAO
 8/1/13, SDC
 SET MAG/WASHER
 NEWREFAO
 8/21/14, EBW
 FD MAG/WASHER
 REFAO
 9/10/19, JFO

O.D.O.T. DISTRICT 2 SURVEY OFFICE (USE ONLY)

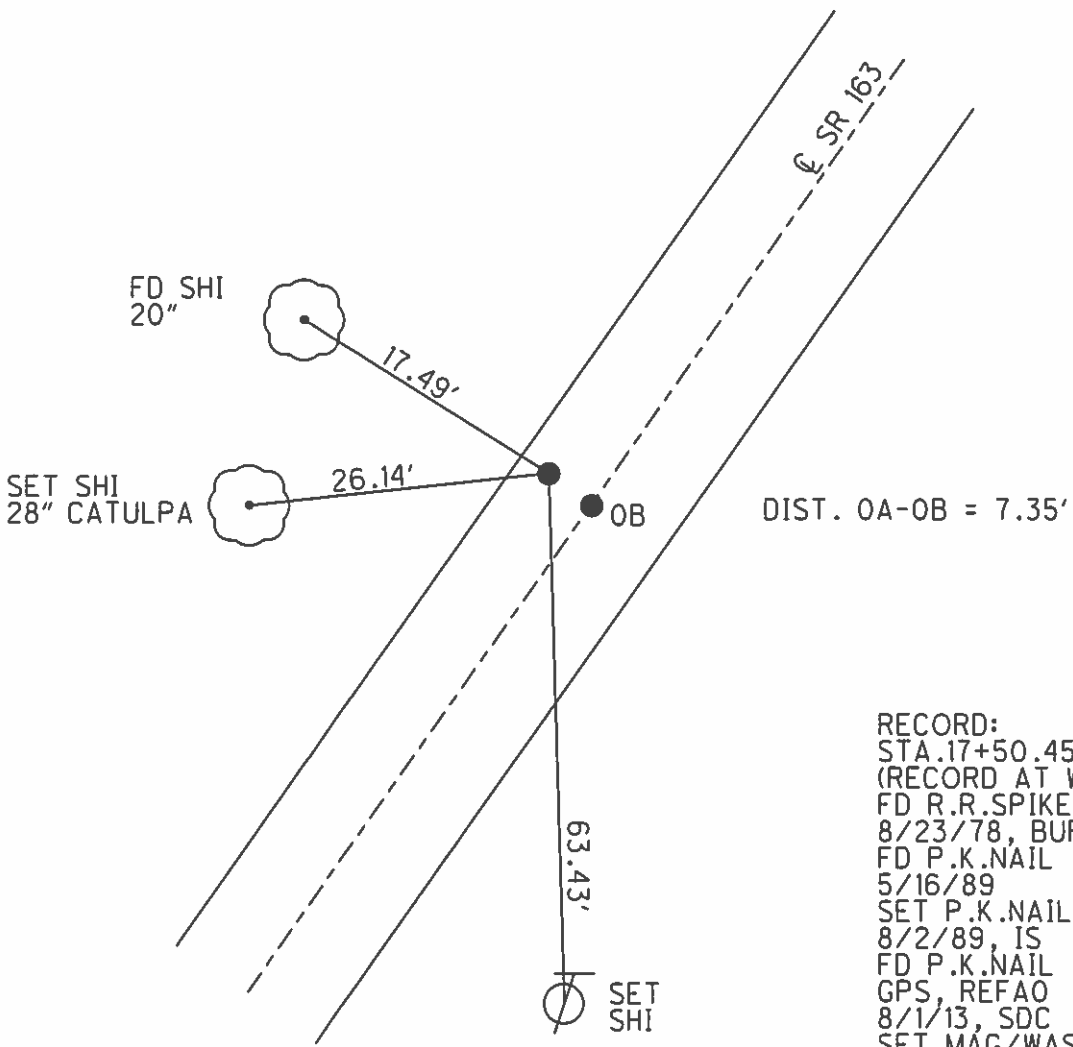
PERSONNEL _____ REFERENCE NO. 0 A SHEET 2 OF 21
 NOTES RHOADES DATE 8/1/13 ROUTE SR 163
 H.C. CODER WEATHER CLOUDY COUNTY WOOD
 R.C. RHOADES TEMP. 80° TOWNSHIP TROY
 _____ SECTION RT 41
 _____ T 6 N R 12 E

TYPE MONUMENT P.K.NAIL
 ON SURFACE - ~~BELOW~~ ON _____
 LEFT - CL PAV'T - ~~RIGHT~~ 5.1'
5.1' TO LT EDGE PAVEMENT
 S.L.M. 17+50.30

RT 40	RT 41
RT 39	RT 42



Grid: Northing: 673792.092 Easting: 1694973.910



RECORD:
 STA. 17+50.45
 (RECORD AT WOOD CO.)
 FD R.R. SPIKE
 8/23/78, BURNSIDE
 FD P.K.NAIL
 5/16/89
 SET P.K.NAIL
 8/2/89, IS
 FD P.K.NAIL
 GPS, REFAO
 8/1/13, SDC
 SET MAG/WASHER
 GPS, NEWREFAO
 8/21/14, EBW

O.D.O.T. DISTRICT 2 SURVEY OFFICE

PERSONNEL

REFERENCE NO. 0-A

SHEET 2 OF 14

NOTES 1. Stone

H.C. D. Curtis

R.C. J. Householder

DATE 16 May 89

WEATHER Cloudy

TEMP. 53°

ROUTE SR#163

COUNTY Wood

TOWNSHIP Troy

SECTION 5

T R

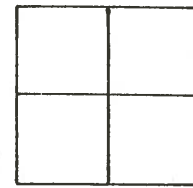
TYPE MONUMENT PK Nails

ON SURFACE - BELOW Surface

LEFT - & PAV'T. - RIGHT

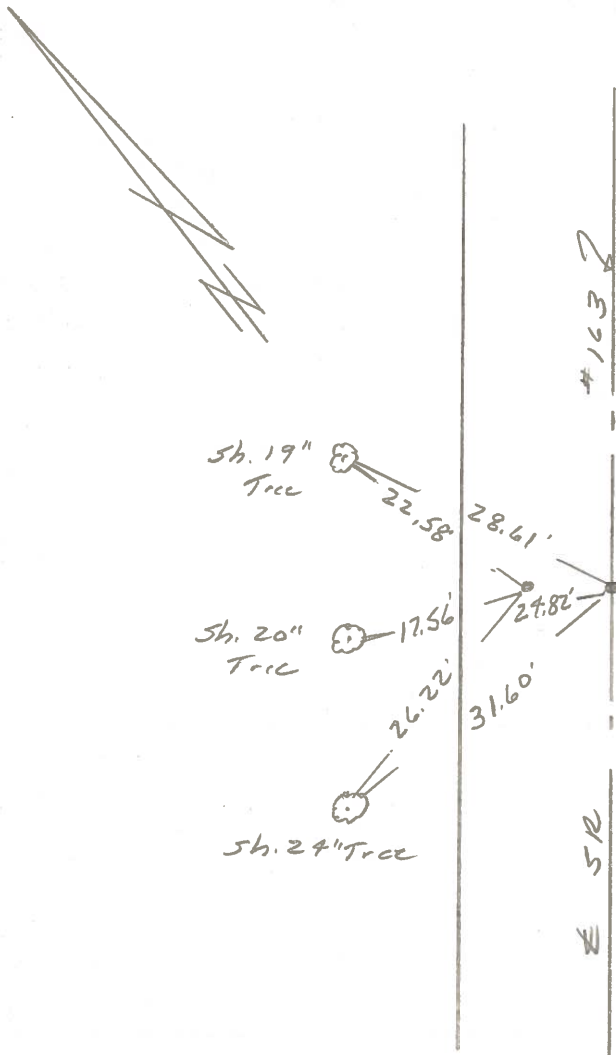
 TO EDGE PAVEMENT

S.L.M. 17+57



SET P.K. NAILS TO SURFACE

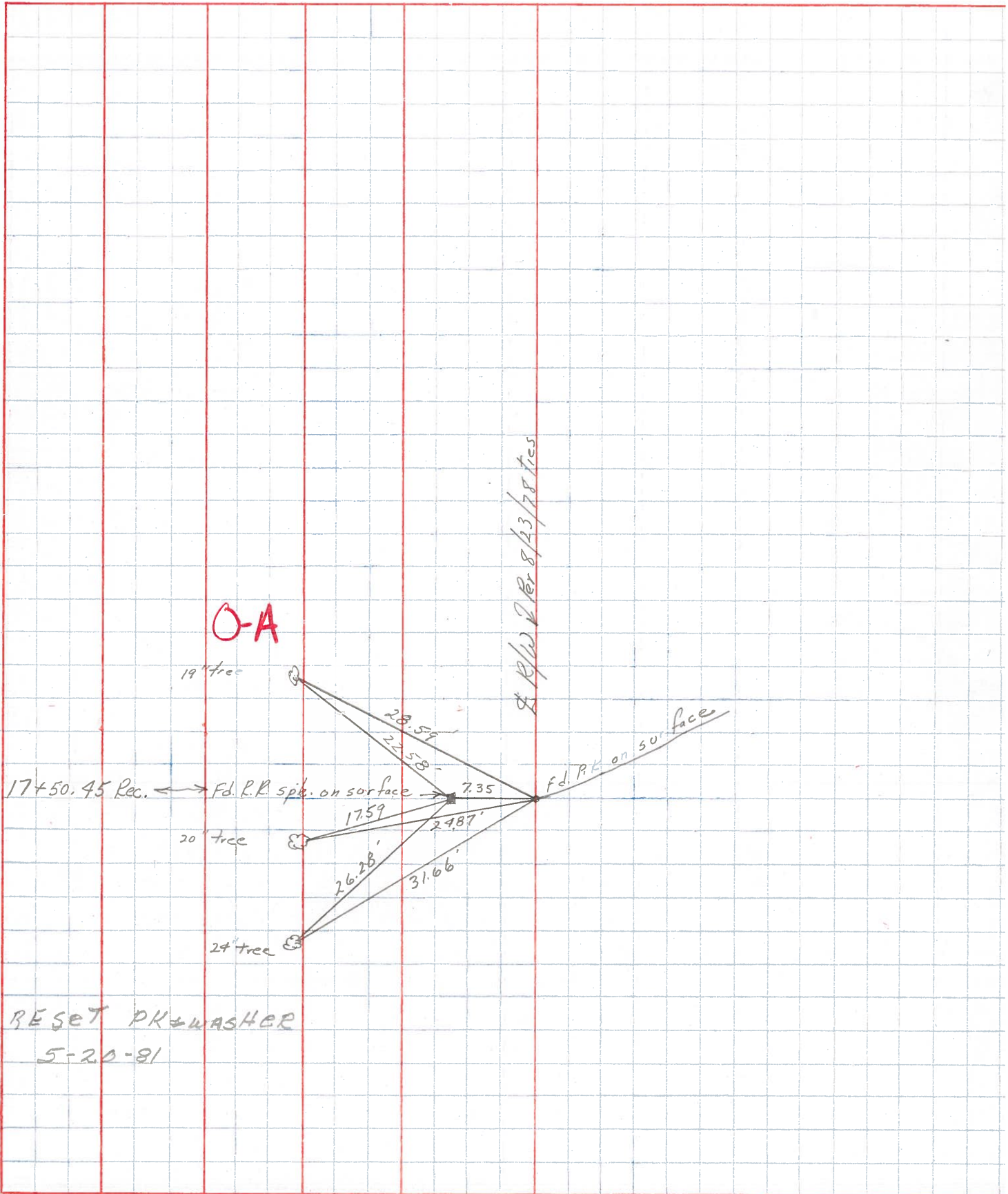
8-2-89



PERSONNEL	TITLE	PERSONNEL	TITLE
MOSSER			
BARBOUR			
RIPPLE			
GEYMAN			

COUNTY WOOD DATE 5-20-81
 S. R. 163 WEATHER _____
 SEC. _____ TEMP. _____

DESCRIPTION _____ LEFT _____ CENTER LINE _____ RIGHT _____ JOB NO. _____



PERSONNEL	TITLE	PERSONNEL	TITLE	COUNTY	DATE
				Wood	OK 1/6/59
					SWORDEN ✓ 4/11/60
				S. R. #163	WEATHER
				SEC. I.	Silvester 6/24/69
					TEMP

DESCRIPTION	LEFT	CENTER LINE	RIGHT	JOB NO.
Sta. 0+00 R.R. spike & U.S. #20 f S.E. #163 (BRASS MON)	#311		Shiner in 28" maple S.E. 78.99 Shiner in 30" maple S. 79.20 Shiner in T.P. S.W. 73.30 Shiner in P.P. N.W. 42.82 Shiner in T.P. N.E. 66.63 Shiner in T.P. N.E. 72.43	
Sta. 0+59.97 X-on line stone N. line of U.S. #20 f S.E. #163	#312 0	Did Not Find	Conc. hitching post gone E.N.E. 21.70 Shiner in 12" catalpa gone N.E. 48.85 Shiner in 30" maple N.W. 71.90 Cor. church steps (bottom) N.W. 95.58 Shiner in T.P. E. 29.61 X Top curb S.E. 42.49 X Top curb S.W. 48.44	
Sta. 3+23.2 R.R. spk. in pipe	#313		Shiner in 12" walnut N.E. 41.15 N.E. Cor. of parsonage S.W. 97.50 S.E. Cor. Conc curb Bott. N.W. 90.12 Shiner in 10" walnut S.E. 28.65 Shiner in 18" Walnut E. 37.50	
Sta. 17+50 Iron pipe - 7.35' W of & Paint of road. 4.00	#314 OA		Shiner in 24" Catalpa S.W. 26.34 " " " " W. 17.65 " " " " N.W. 22.57 " " 30" walnut S. 58.42	
Sta. 29+94.1 R.R. spk. Pl.	#315 1A		Shiner in 8" butternut N.W. 50.00 Shiner in Cor. post N.N.W. 31.85 Iron cor. post S.E. 28.93 Shiner in 14" maple S.E. 42.70 Shiner in P. Pole S.E. 30.20 Shiner in T. Pole S.S.W. 58.97 Shiner in T. Pole N.W. 60.00 Shiner in T. Pole N.W. 27.15	

PERSONNEL	TITLE	PERSONNEL	TITLE

COUNTY Wood DATE OK 1/2/67
SWORDEN ✓ 4/11/60
 S. R. # 163 WEATHER 3-7-68
 SEC. T. TEMP. _____

DESCRIPTION	LEFT	CENTER LINE	RIGHT	JOB NO.
Sta. 0+00 R.R. spike to U.S. #20 S.R. #163 (BRASS MON)	#311		Shiner in 28" maple S.E. 78.97 Shiner in 30" maple S. 73.30 Shiner in T.P. S.W. 42.82 Shiner in R.P. N.W. 66.63 Shiner in T.P. N.E. 72.43	
Sta. 0+57.97 X on line stone N. line of U.S. #20 S.R. #163	#312 0	Did Not Find	Enc. hitching post gone E.N.E. 21.74 Shiner in 12" catalpa gone N.E. 48.35 Shiner in 30" maple N.W. 71.70 Can church steps (bottom) N.W. 95.55	
Sta. 3+23.2 R.R. spike in pipe	+16 #313	checked OK 3-7-68	Shiner in 12" walnut N.E. 41.75 N.E. corner of garage S.W. 77.5 S.E. corner curb Bott. N.W. 70.75 Shiner in 10" walnut S.E. 68.68 Shiner in 18" Walnut E. 37.50 62	
Sta. 17+50 Iron pipe - 7.35' w of rd of road.	#314 OA	OK 3-5-68	Shiner in P S.E. 47.80 Shiner in 24" tree N 22.60 " " " " W 17.63 " " 28" Tree SW 26.31	
Sta. 29+94.1 R.R. spike Pl.	#315 IA	OK 3-7-68	Shiner in 8" butternut N.W. 58.00 Shiner in esp. post N.W. 31.85 Iron con. post S.E. 28.92 Shiner in 14" maple S.E. 46.50 Shiner in P. Pole S.E. 30.20 Shiner in T. Pole S.S.W. 60.00 Shiner in T. Pole N.W. 27.15	

PERSONNEL	TITLE	PERSONNEL	TITLE

COUNTY Wood DATE OK 1/6/58
SWORDEN ✓ 4/11/60
 S. R. #163 WEATHER _____
 SEC. I. TEMP. _____

DESCRIPTION	LEFT	CENTER LINE	RIGHT	JOB NO.
Sta. 0+00 R.R. spike & U.S. #20 ft S.R. #163 (BRASS MON)			Shiner in 28" maple S.E. 78.99 79.20' Shiner in 30" maple S. 73.30' 73.34' Shiner in T.P. S.W. 42.82' 42.85' Shiner in P.P. N.W. 66.63 Shiner in T.P. N.E. 72.43	
	#311			
Sta. 0+59.97 X-on line stone N. line of U.S. #20 ft S.R. #163		Did Not Find	Conc. hitching post ^{gone} S.N.E. 21.70 Shiner in 12" catalpa ^{gone} N.E. 48.85 Shiner in 30" maple N.W. 71.90' Con. church steps (bottom) N.W. 95.55	
	#312			
	0			
Sta. 3+23.2 R.R. spk. in pipe			Shiner in 12" Walnut N.E. 41.15 N.E. cor. Pdn. of parsonage S.W. 97.50 S.E. cor. Conc. curb ^{Bott.} N.W. 90.12' Shiner in 10" Walnut S.E. 68.75 Shiner in 18" Walnut E. 37.50	
	#313			
Sta. 17+50 Iron pipe - 7.35' W of & of road.				
	#314			
	OA			
Sta. 29+94.1 R.R. spk. Pl.			Shiner in 8" butternut N.W. 50.07 50.12' 50.20' Shiner in cor. post N.W. 31.85' Iron cor. post S.E. 28.93 Shiner in 14" maple ^{Gon} S.E. 42.75 42.76' Shiner in P. Pole S.E. 30.20 Shiner in T. Pole S.S.W. 60.00 Shiner in T. Pole N.W. 27.15	
	#315			
	EA			

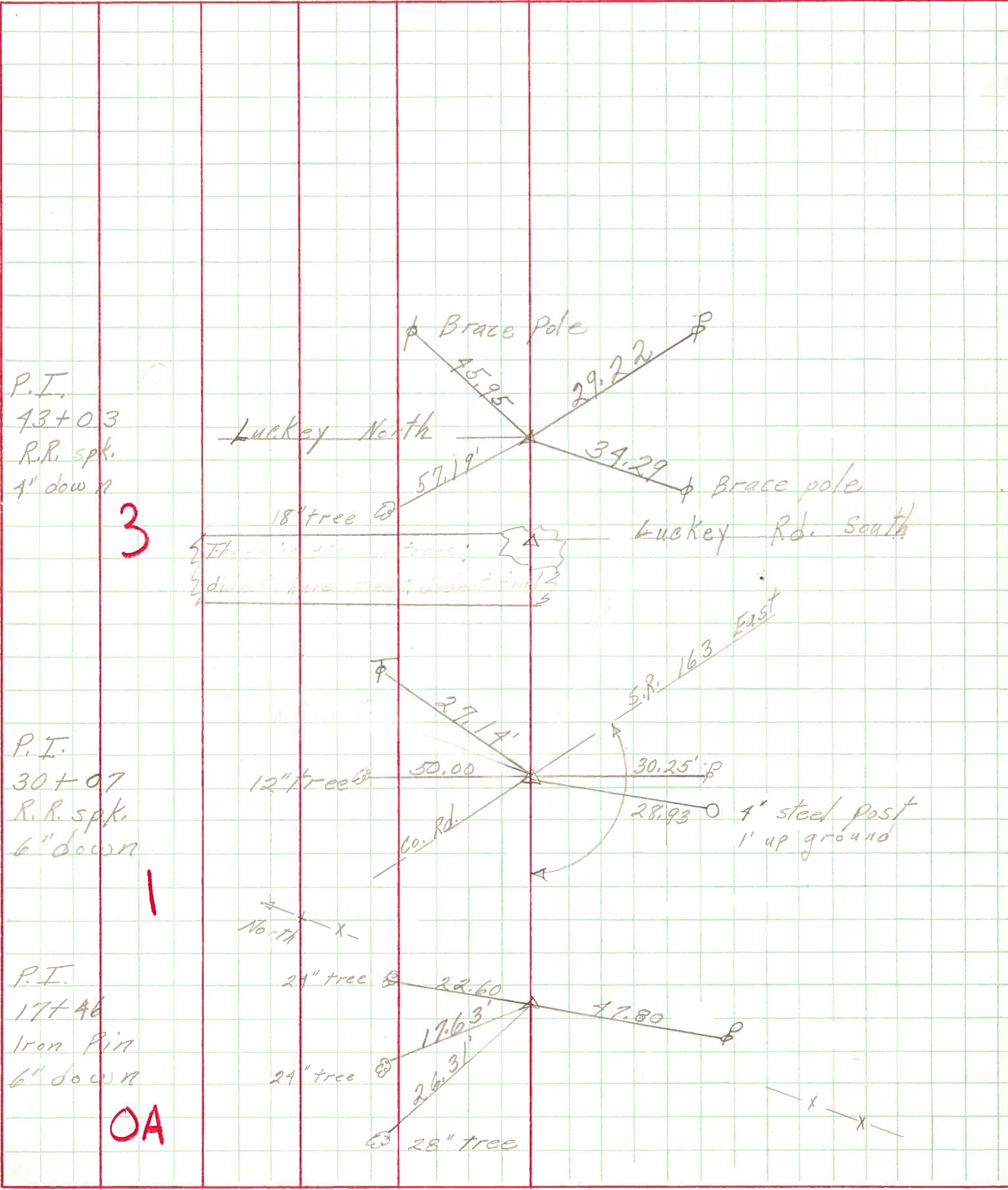
PERSONNEL TITLE PERSONNEL TITLE

Schneider
 Mosser
 Barbour
 Potts

COUNTY Wood DATE 3-5-69
 S. R. 163 WEATHER Fair
 SEC. U.S. # 206 I-280 TEMP. 35'

DESCRIPTION Ties for Control Points JOB NO.

LEFT CENTER LINE RIGHT



P.I.
 43+0.3
 R.R. spk.
 4" down

3

P.I.
 30+07
 R.R. spk.
 6" down

1

P.I.
 17+46
 Iron Pin
 6" down

OA