

O.D.O.T. DISTRICT 2 SURVEY OFFICE (USE ONLY)

PERSONNEL \_\_\_\_\_

REFERENCE NO. 0 B

SHEET 3 OF 21

NOTES ASTON

DATE 10/12/23

ROUTE SR 163

H.C. NIESE

WEATHER CLOUDY

COUNTY WOOD

R.C. ASTON

TEMP. 60°

TOWNSHIP TROY

SECTION RT 41

DWG BY ASTON

PID CHIP SEAL

T 6 N R 12 E

TYPE MONUMENT MAG/WASHER

ON SURFACE - ~~BELOW~~ ON

OFFSET ☉ PAVEMENT ON \_\_\_\_\_ LT : RT

- TO - EDGE PAVEMENT

STATION: 17+50.30

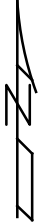
HORZ.DATUM: NAD83(2011)

GEOID: NAVD88 2018

GRID: NORTHING: 673788.417

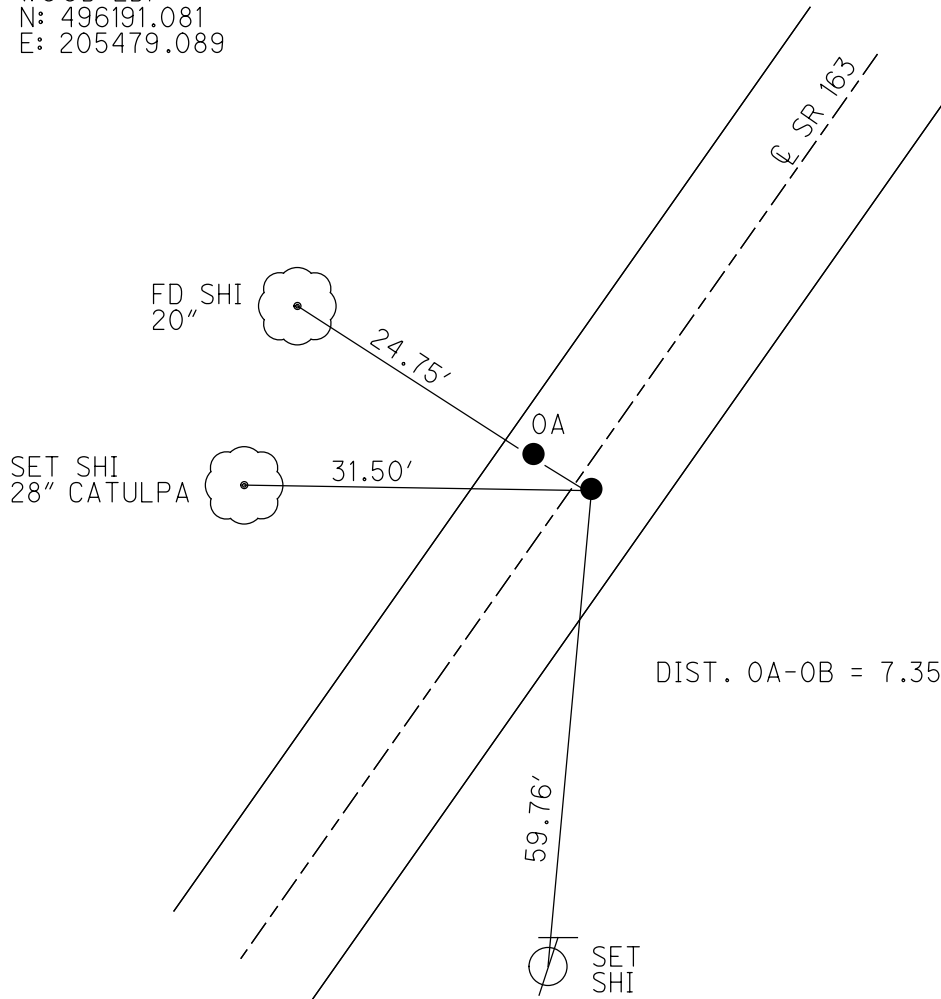
EASTING: 1694980.284

RT 40	RT 41
RT 39	RT 42



WOOD LDP:  
N: 496191.081  
E: 205479.089

RECORD:  
FD P.K.NAIL  
5/16/89  
SET P.K.NAIL  
8/2/89, IS  
DNF  
8/1/13, SDC  
SET MAG/WASHER  
NEWREFBO  
8/21/14, EBW  
FD MAG NAIL  
REFBO  
9/10/19, JFO  
FD MAG/ WASHER  
REFOB  
6/14/23, JMR  
FD MAG/WASHER  
10-12-23, TDN



O.D.O.T. DISTRICT 2 SURVEY OFFICE (USE ONLY)

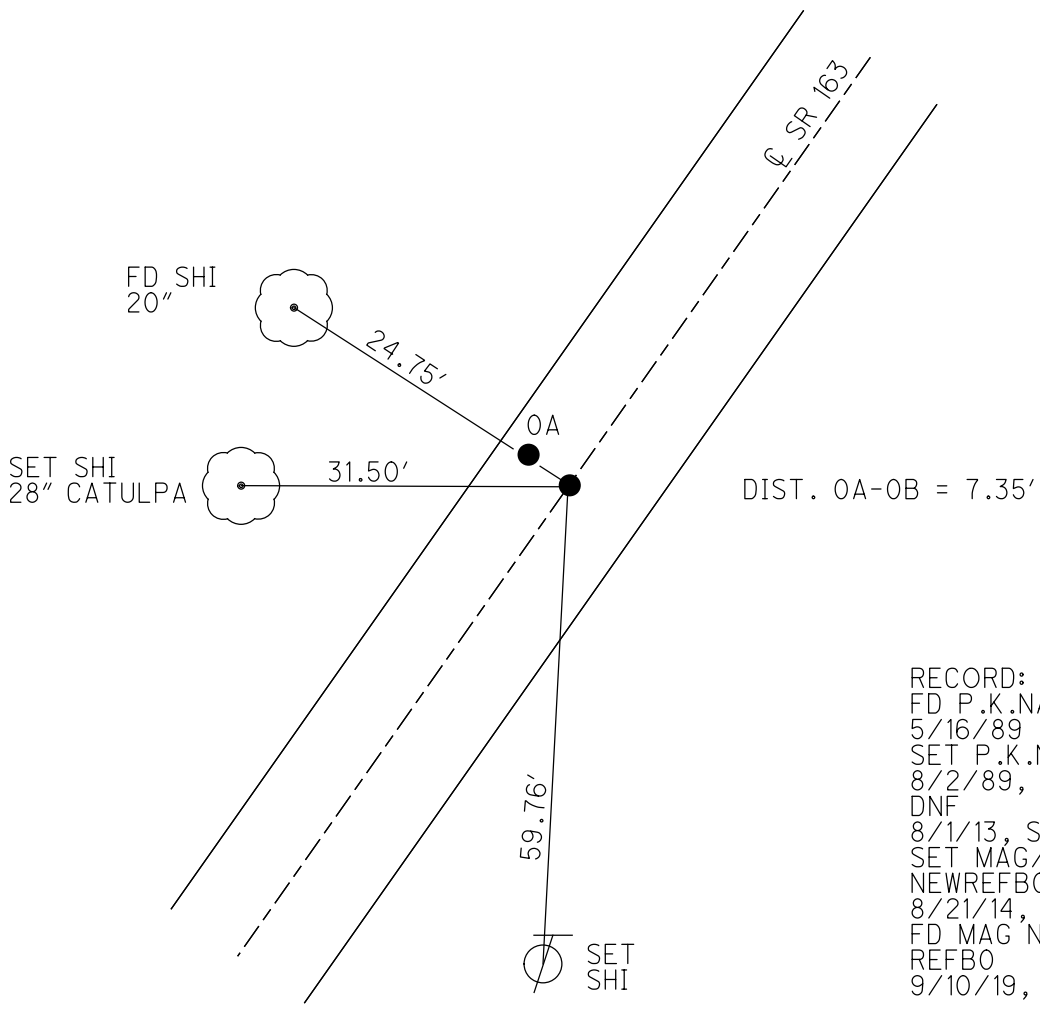
PERSONNEL \_\_\_\_\_ REFERENCE NO. 0 B SHEET 3 OF 21  
 NOTES RHOADES DATE 8/21/14 ROUTE SR 163  
 H.C. WESTFALL WEATHER CLEAR COUNTY WOOD  
 R.C. RHOADES TEMP. 82° TOWNSHIP TROY  
 DWG BY NIESE PID NO PID SECTION RT 41  
 T 6 N R 12 E

TYPE MONUMENT MAG/WASHER  
 ON SURFACE - ~~BELOW~~ ON  
 OFFSET ☉ PAVEMENT ON LT : RT  
- TO - EDGE PAVEMENT  
 STATION: 17+50.30

RT 40	RT 41
RT 39	RT 42



HORZ. DATUM: NAD83(2011) GEOID: 2012A  
 GRID: NORTHING: 673788.417 EASTING: 1694980.284



RECORD:  
 FD P.K.NAIL  
 5/16/89  
 SET P.K.NAIL  
 8/2/89, IS  
 DNF  
 8/1/13, SDC  
 SET MAG/WASHER  
 NEWREFB0  
 8/21/14, EBW  
 FD MAG NAIL  
 REFBO  
 9/10/19, JFO

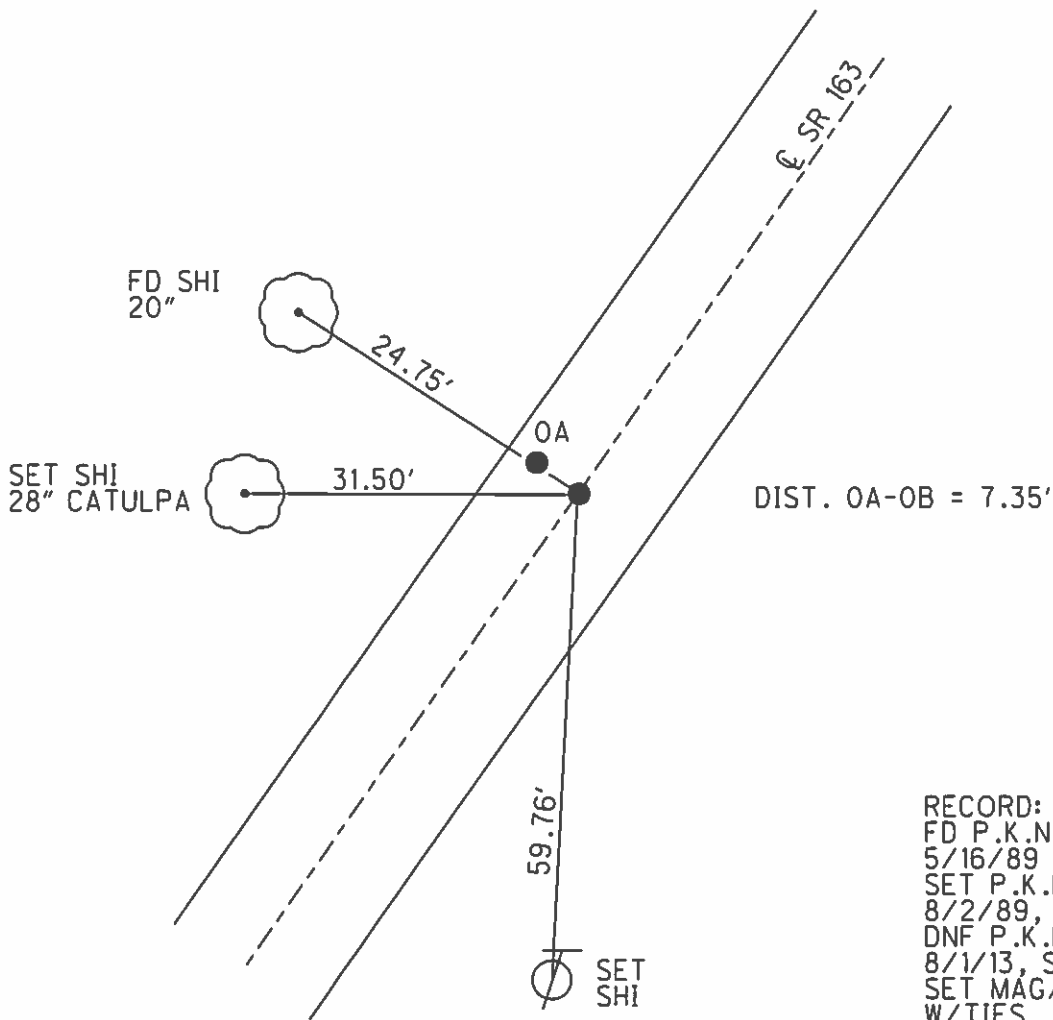
O.D.O.T. DISTRICT 2 SURVEY OFFICE (USE ONLY)

PERSONNEL \_\_\_\_\_ REFERENCE NO. 0 B SHEET 3 OF 21

NOTES RHOADES DATE 8/21/14 ROUTE SR 163  
 H.C. WESTFALL WEATHER CLEAR COUNTY WOOD  
 R.C. RHOADES TEMP. 82° TOWNSHIP TROY  
 \_\_\_\_\_ SECTION RT 41  
 \_\_\_\_\_ T 6 N R 12 E

TYPE MONUMENT MAG/WASHER  
 ON SURFACE - ~~BELOW~~ ON  
 LEFT - ☉ PAV'T - RIGHT ON  
\_\_\_\_\_ TO \_\_\_\_\_ EDGE PAVEMENT  
 S.L.M. 17+50.30  
 Grid: Northing: 673788.397 Easting: 1694980.289

RT 40	RT 41
RT 39	RT 42



RECORD:  
 FD P.K.NAIL  
 5/16/89  
 SET P.K.NAIL  
 8/2/89, IS  
 DNF P.K.NAIL  
 8/1/13, SDC  
 SET MAG/WASHER  
 W/TIES  
 GPS, NEWREFBO  
 8/21/14, EBW

# O.D.O.T. DISTRICT 2 SURVEY OFFICE

PERSONNEL

REFERENCE NO. 0-A

SHEET 2 OF 14

NOTES 1. Stone

H.C. D. Curtis

R.C. J. Householder

DATE 16 May 89

WEATHER Cloudy

TEMP. 53°

ROUTE SR#163

COUNTY Wood

TOWNSHIP Troy

SECTION 5

T      R     

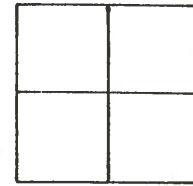
TYPE MONUMENT PK Nails

ON SURFACE - BELOW Surface

LEFT - & PAV'T. - RIGHT     

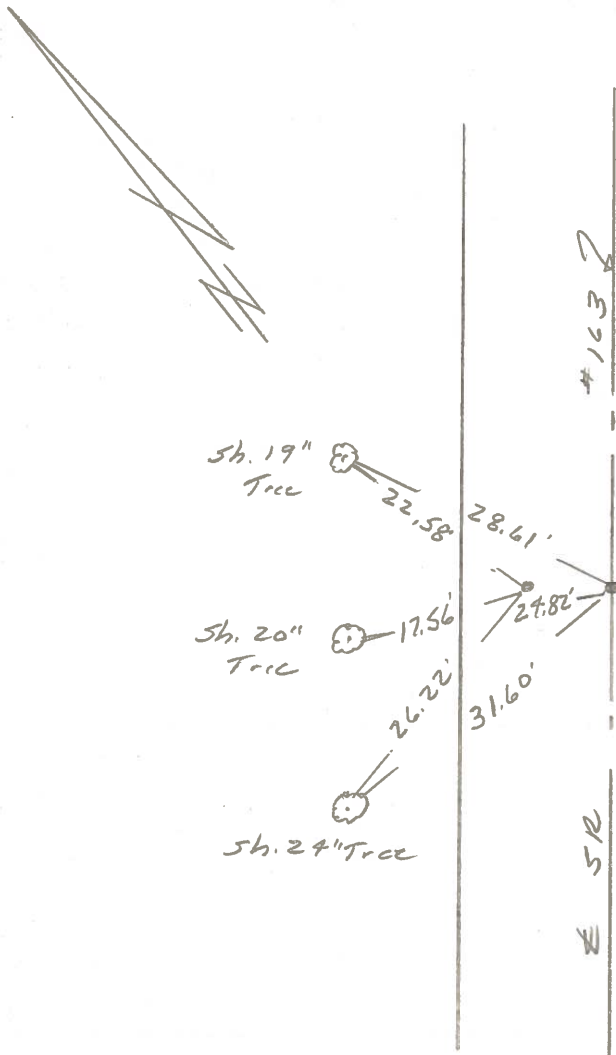
     TO      EDGE PAVEMENT

S.L.M. 17+57



SET P.K. NAILS TO SURFACE

8-2-89



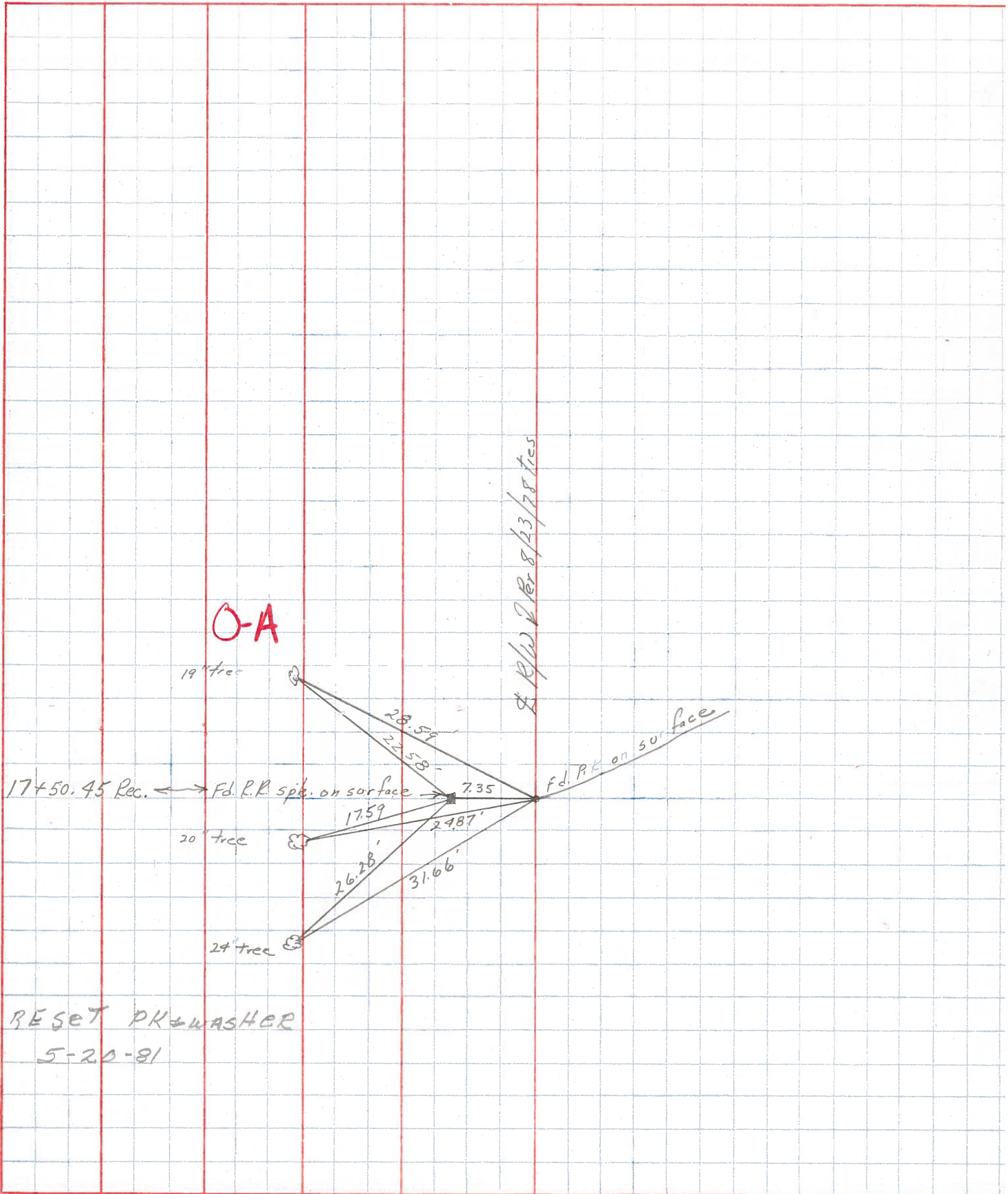
PERSONNEL	TITLE	PERSONNEL	TITLE
MOSSER			
BARBOUR			
RIPPLE			
GEYMAN			

COUNTY WOOD DATE 5-20-81

S. R. 163 WEATHER \_\_\_\_\_

SEC. \_\_\_\_\_ TEMP. \_\_\_\_\_

DESCRIPTION \_\_\_\_\_ LEFT \_\_\_\_\_ CENTER LINE \_\_\_\_\_ RIGHT \_\_\_\_\_ JOB NO. \_\_\_\_\_



RESET PK & WASHER  
5-20-81