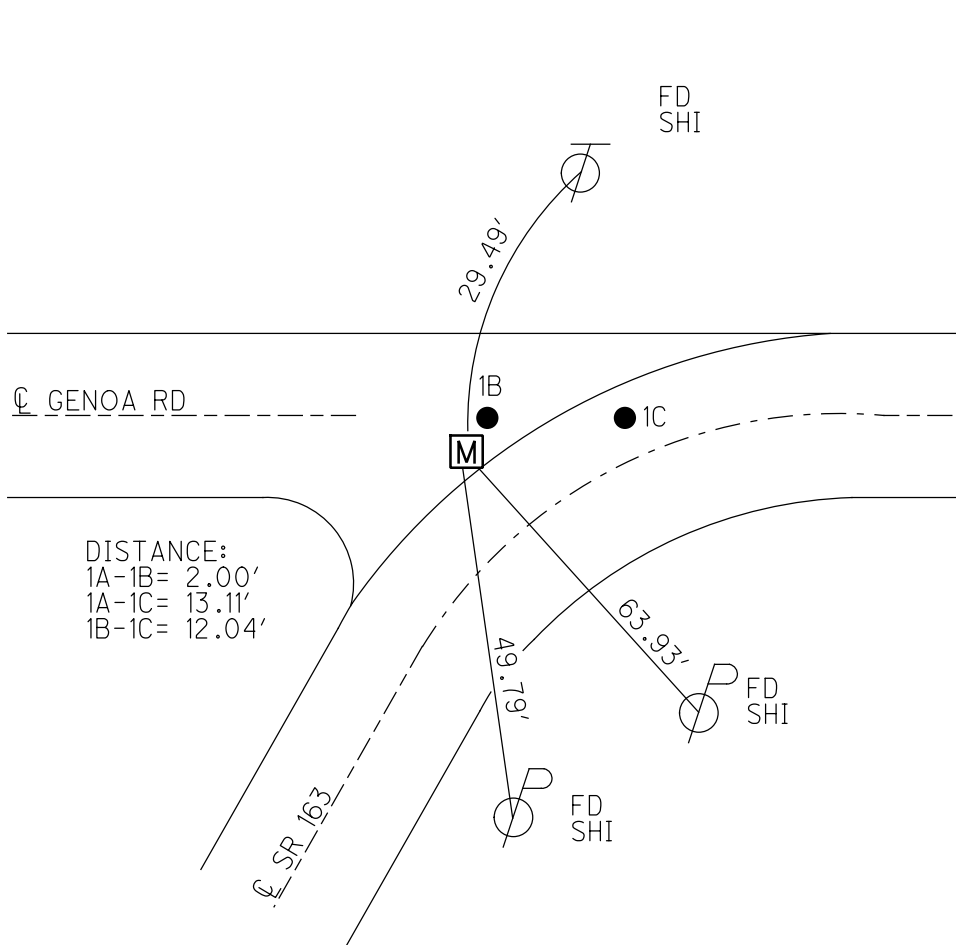
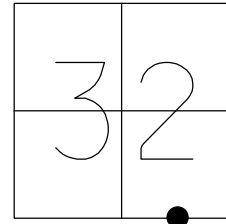


O.D.O.T. DISTRICT 2 SURVEY OFFICE (USE ONLY)

PERSONNEL \_\_\_\_\_ REFERENCE NO. 1 A SHEET 4 OF 21  
 NOTES ASTON DATE 10/12/23 ROUTE SR 163  
 H.C. NIESE WEATHER CLOUDY COUNTY WOOD  
 R.C. ASTON TEMP. 60° TOWNSHIP LAKE  
 SECTION 32  
 DWG BY ASTON PID CHIP SEAL T 6 N R 12 E

TYPE MONUMENT MONBOX W/ 3/4" BOLT  
 ON SURFACE - ~~BELOW~~ ON  
 OFFSET Q PAVEMENT 16.2' LT : ~~RT~~  
3' TO LT EDGE PAVEMENT  
 STATION: 29.94.68

HORZ.DATUM: NAD83(2011) GEOID: NAVD88 2018  
 GRID: NORTHING: 674860.421 EASTING: 1695611.933

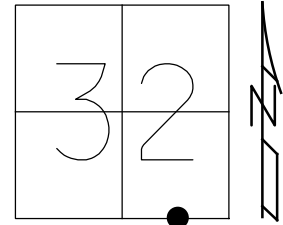


RECORD: P.I.  
 STA. 29+94.1  
 FD IPIN  
 4/15/46, BRUBAKER  
 $\Delta = 59^\circ 46'$  RT  
 FD R.R.SPIKE  
 AT SURFACE  
 4/10/73, TOMSIC  
 FD MINE SPIKE  
 ATOP BOLT BEING  
 6" BELOW.  
 SET MINE SPIKE  
 5/20/81, CRONIN  
 FD BOAT SPIKE  
 5/16/89  
 SET BOAT SPIKE  
 8/2/89, I.S.  
 FD BOAT SPIKE  
 GPS, REFA1  
 1/24/12, RJL  
 FD SM.R.R.SPIKE  
 AT SURFACE  
 ATOP 3/4" STEEL BOLT  
 0.85' BELOW  
 ATOP 3/4" BOLT  
 1.5' BELOW  
 8/13/13, SDC  
 SET MONBOX  
 W/ 3/4" BOLT  
 8/13/13, SDC  
 FD MONBOX  
 REFA1  
 9-21-18, JFO

O.D.O.T. DISTRICT 2 SURVEY OFFICE (USE ONLY)

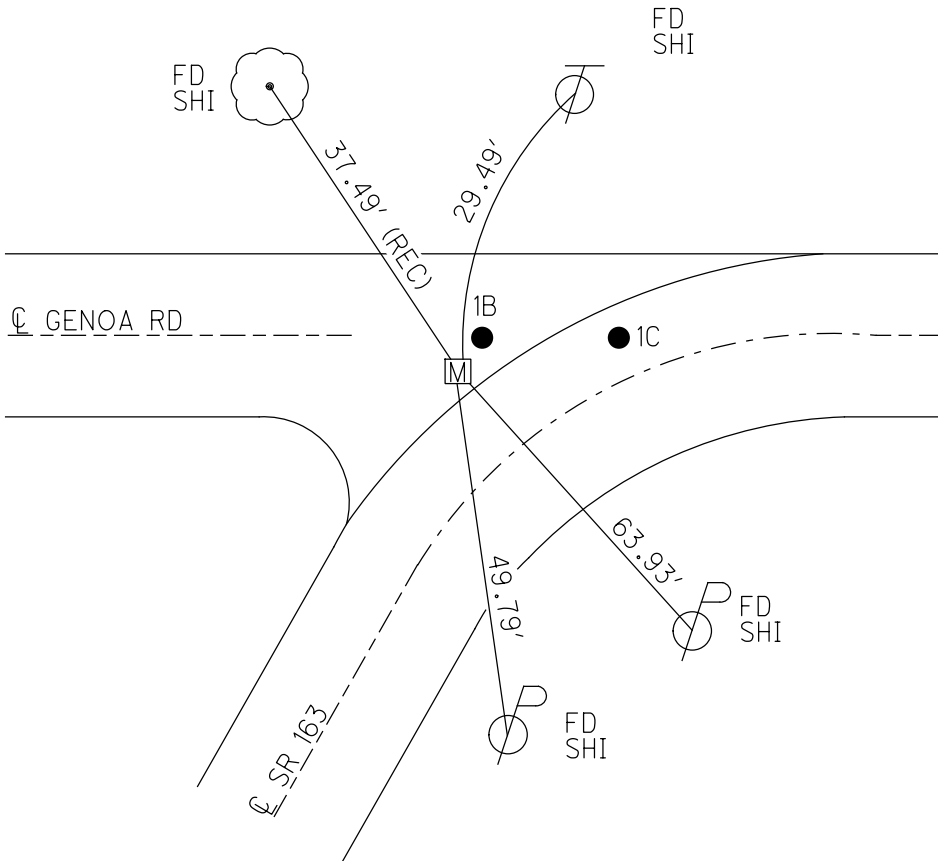
PERSONNEL \_\_\_\_\_ REFERENCE NO. 1 A SHEET 4 OF 21  
 NOTES CODER \_\_\_\_\_ DATE 8/13/13 ROUTE SR 163  
 H.C. CODER \_\_\_\_\_ WEATHER CLEAR COUNTY WOOD  
 R.C. RHOADES TEMP. 74° TOWNSHIP LAKE  
 \_\_\_\_\_ SECTION 32  
 \_\_\_\_\_ T 6 N R 12 E

TYPE MONUMENT MONBOX W/ 3/4" BOLT  
~~ON SURFACE~~ - BELOW 1 1/2'  
 LEFT - ☉ PAV'T - ~~RIGHT~~ 16.2'  
3' LT TO LT EDGE PAVEMENT  
 S.L.M. 29+94.68  
 Grid: Northing: 674860.421 Easting: 1695611.933



DISTANCE:  
 1A-1B= 2.00'  
 1A-1C= 13.11'  
 1B-1C= 12.04'

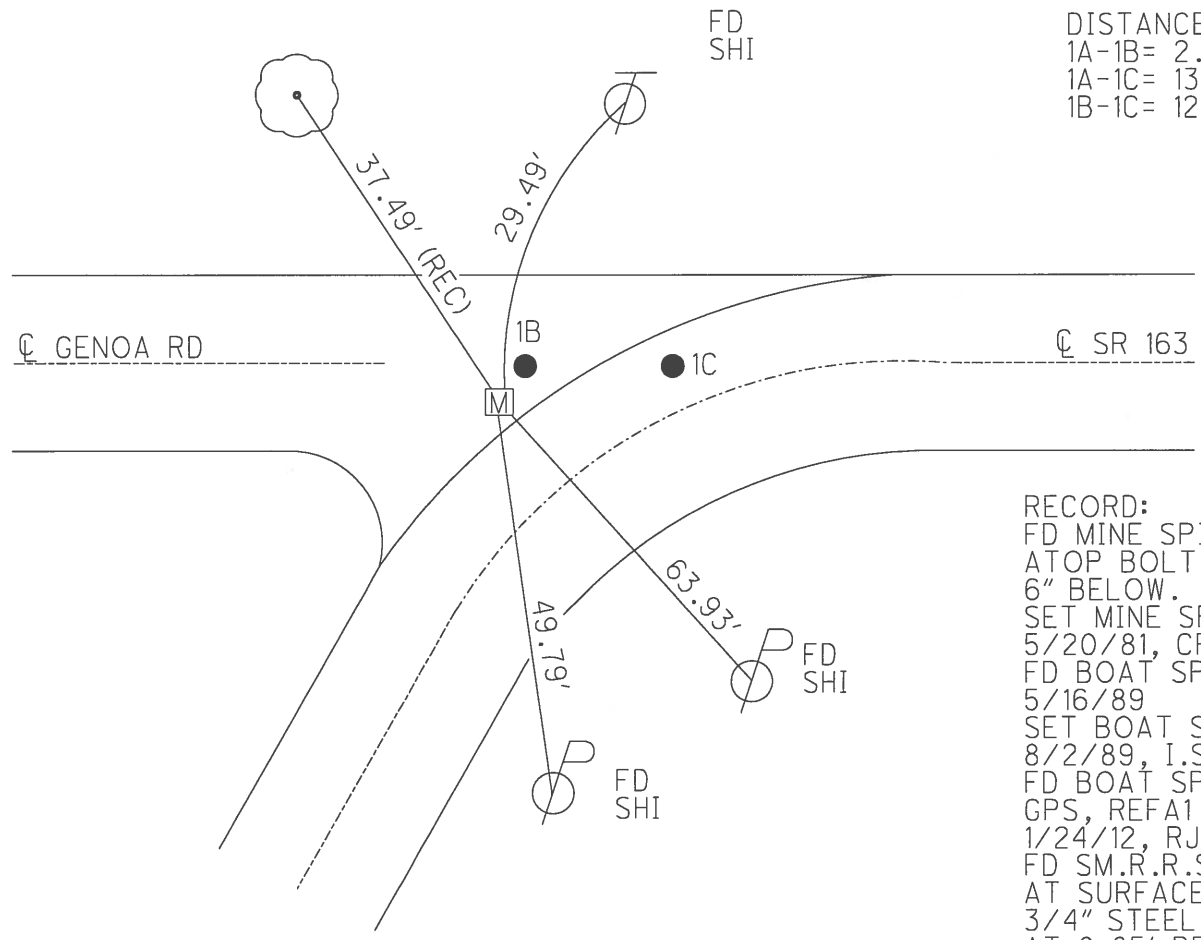
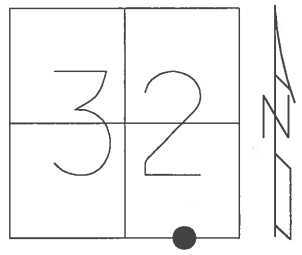
RECORD: P.I.  
 STA. 29+94.1  
 FD IPIN  
 4/15/46, BRUBAKER  
 $\Delta = 59^\circ 46'$  RT  
 FD R.R.SPIKE  
 AT SURFACE  
 4/10/73, TOMSIC  
 FD MINE SPIKE  
 ATOP BOLT BEING  
 6" BELOW.  
 SET MINE SPIKE  
 5/20/81, CRONIN  
 FD BOAT SPIKE  
 5/16/89  
 SET BOAT SPIKE  
 8/2/89, I.S.  
 FD BOAT SPIKE  
 GPS, REFA1  
 1/24/12, RJL  
 FD SM.R.R.SPIKE  
 AT SURFACE  
 ATOP 3/4" STEEL BOLT  
 0.85' BELOW  
 ATOP 3/4" BOLT  
 1.5' BELOW  
 8/13/13, SDC  
 SET MONBOX  
 W/ 3/4" BOLT  
 8/13/13, SDC  
 FD MONBOX  
 REFA1  
 9-21-18, JFO



O.D.O.T. DISTRICT 2 SURVEY OFFICE (USE ONLY)

PERSONNEL \_\_\_\_\_ REFERENCE NO. 1 A SHEET 4 OF 21  
 NOTES CODER \_\_\_\_\_ DATE 8/13/13 ROUTE SR 163  
 H.C. CODER \_\_\_\_\_ WEATHER CLEAR COUNTY WOOD  
 R.C. RHOADES TEMP. 74° TOWNSHIP LAKE  
 \_\_\_\_\_ SECTION 32  
 \_\_\_\_\_ T 6 N R 12 E

TYPE MONUMENT 3/4" BOLT, MONBOX SET  
~~ON SURFACE~~ - BELOW 1 1/2'  
 LEFT - CL PAV'T - ~~RIGHT~~ 16.2'  
3' LT TO LT EDGE PAVEMENT  
 S.L.M. 29+94.68  
 Grid: Northing: 674860.421 Easting: 1695611.933



DISTANCE:  
 1A-1B= 2.00'  
 1A-1C= 13.11'  
 1B-1C= 12.04'

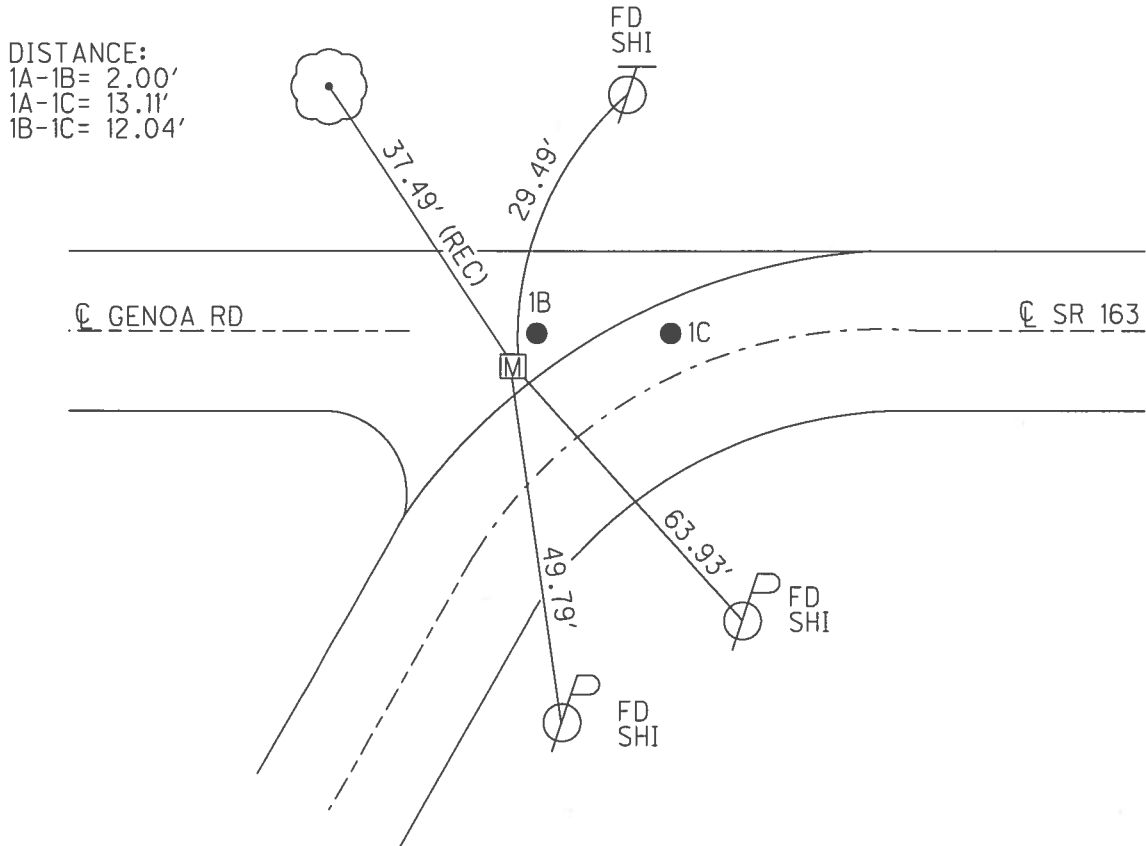
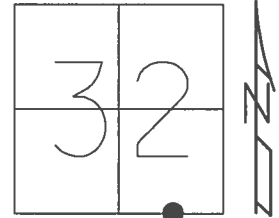
RECORD: P.I.  
 STA. 29+94.1  
 FD IPIN  
 4/15/46, BRUBAKER  
 $\Delta = 59^\circ 46'$  RT  
 FD R.R.SPIKE  
 AT SURFACE  
 4/10/73, TOMSIC

RECORD:  
 FD MINE SPIKE  
 ATOP BOLT BEING  
 6" BELOW.  
 SET MINE SPIKE  
 5/20/81, CRONIN  
 FD BOAT SPIKE  
 5/16/89  
 SET BOAT SPIKE  
 8/2/89, I.S.  
 FD BOAT SPIKE  
 GPS, REFA1  
 1/24/12, RJL  
 FD SM.R.R.SPIKE  
 AT SURFACE ATOP  
 3/4" STEEL BOLT  
 AT 0.85' BELOW ATOP  
 3/4" BOLT  
 AT 1.5' BELOW  
 8/13/13, SDC  
 MONBOX W/ 3/4"  
 BOLT FD GPS  
 REFA1  
 9-21-18, JFO

O.D.O.T. DISTRICT 2 SURVEY OFFICE (USE ONLY)

PERSONNEL \_\_\_\_\_ REFERENCE NO. 1 A SHEET 4 OF 21  
 NOTES CODER \_\_\_\_\_ DATE 8/13/13 ROUTE SR 163  
 H.C. CODER \_\_\_\_\_ WEATHER CLEAR COUNTY WOOD  
 R.C. RHOADES TEMP. 74° TOWNSHIP LAKE  
 \_\_\_\_\_ SECTION 32  
 \_\_\_\_\_ T 6 N R 12 E

TYPE MONUMENT 3/4" BOLT, MONBOX SET  
~~ON SURFACE~~ - BELOW 1 1/2'  
 LEFT - Q PAV'T - ~~RIGHT~~ 16.2'  
3' LT TO LT EDGE PAVEMENT  
 S.L.M. 29+94.68  
 Grid: Northing: 674860.444 Easting: 1695611.871



DISTANCE:  
 1A-1B= 2.00'  
 1A-1C= 13.11'  
 1B-1C= 12.04'

RECORD: P.I.  
 STA. 29+94.1  
 FD IPIN  
 4/15/46, BRUBAKER  
 $\Delta = 59^\circ 46' RT$   
 FD R.R.SPIKE  
 AT SURFACE  
 4/10/73, TOMSIC

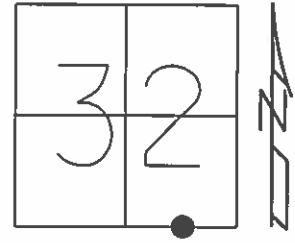
RECORD:  
 FD MINE SPIKE  
 ATOP BOLT BEING  
 6" BELOW.  
 SET MINE SPIKE  
 5/20/81, CRONIN  
 FD BOAT SPIKE  
 5/16/89  
 SET BOAT SPIKE  
 8/2/89, I.S.

FD BOAT SPIKE  
 GPS, REFA1  
 1/24/12, RJL  
 FD SM.R.R.SPIKE  
 AT SURFACE ATOP  
 3/4" STEEL BOLT  
 AT 0.85' BELOW ATOP  
 3/4" BOLT  
 AT 1.5' BELOW  
 8/13/13, SDC

O.D.O.T. DISTRICT 2 SURVEY OFFICE (USE ONLY)

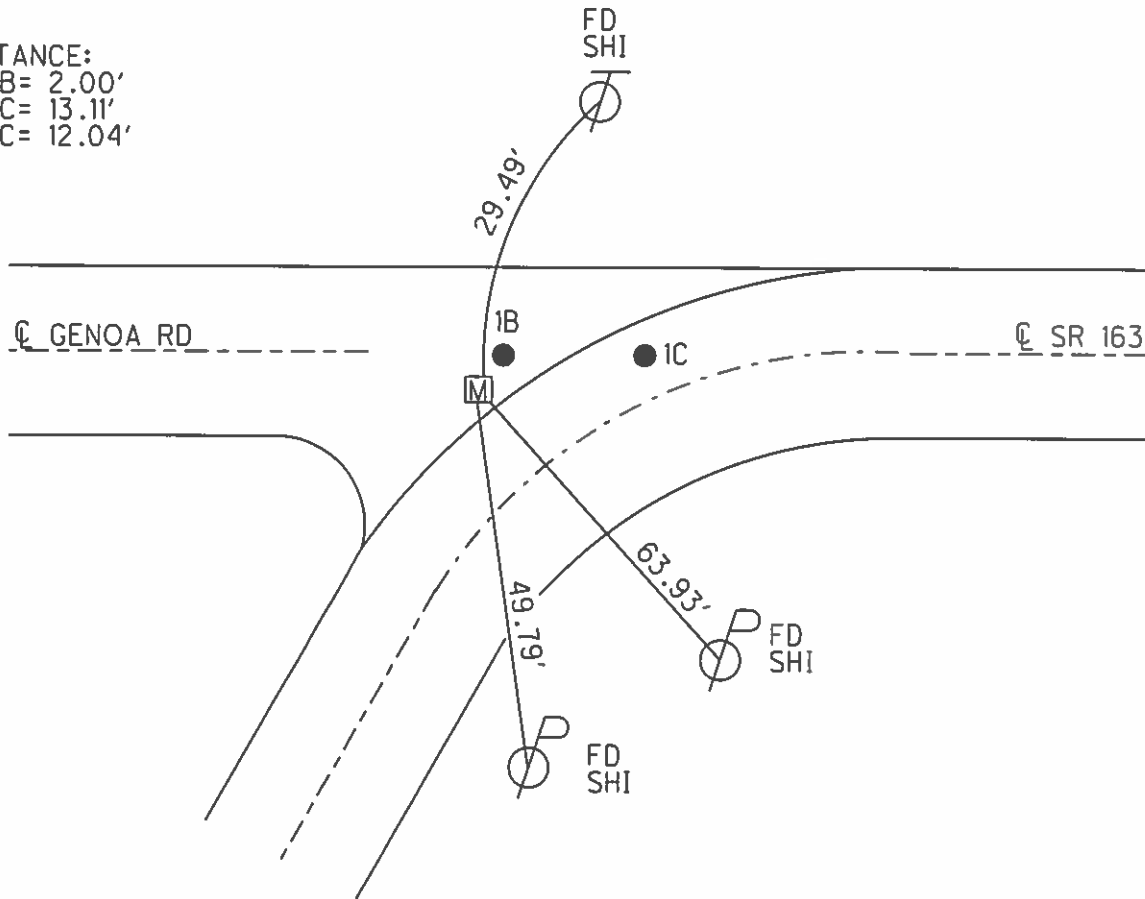
PERSONNEL \_\_\_\_\_ REFERENCE NO. 1 A SHEET 4 OF 21  
 NOTES CODER \_\_\_\_\_ DATE 8/13/13 ROUTE SR 163  
 H.C. CODER \_\_\_\_\_ WEATHER CLEAR COUNTY WOOD  
 R.C. RHOADES TEMP. 74° TOWNSHIP LAKE  
 \_\_\_\_\_ SECTION 32  
 \_\_\_\_\_ T 6 N R 12 E

TYPE MONUMENT 3/4" BOLT, MONBOX SET  
~~ON SURFACE~~ - BELOW 1 1/2'  
 LEFT - ☉ PAV'T - ~~RIGHT~~ 16.2'  
3' LT TO LT EDGE PAVEMENT  
 S.L.M. 29+94.68



Grid: Northing: 674860.444 Easting: 1695611.871

DISTANCE:  
 1A-1B= 2.00'  
 1A-1C= 13.11'  
 1B-1C= 12.04'



RECORD:  
 FD MINE SPIKE  
 ATOP BOLT BEING  
 6" BELOW.  
 SET MINE SPIKE  
 5/20/81, CRONIN  
 FD BOAT SPIKE  
 5/16/89  
 SET BOAT SPIKE  
 8/2/89, I.S.

FD BOAT SPIKE  
 GPS, REFA1  
 1/24/12, RJL  
 FD SM.R.R.SPIKE  
 AT SURFACE ATOP  
 3/4" STEEL BOLT  
 AT 0.85' BELOW ATOP  
 3/4" BOLT  
 AT 1.5' BELOW  
 8/13/13, SDC

O.D.O.T. DISTRICT 2 SURVEY OFFICE

PERSONNEL

REFERENCE NO. 1

SHEET 3 OF 14

NOTES L. Stone

H.C. D. Curtis

R.C. J. Householder

DATE 16 May 89

WEATHER Cloudy

TEMP. 55°

ROUTE SR#163

COUNTY Wood

TOWNSHIP Lake

SECTION 32

T     R    

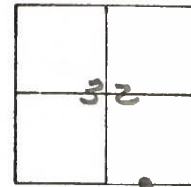
TYPE MONUMENT Ⓐ = Boat Spk.  
Ⓑ = PK Nail  
Ⓒ = PK Nail

ON SURFACE - BELOW Surface

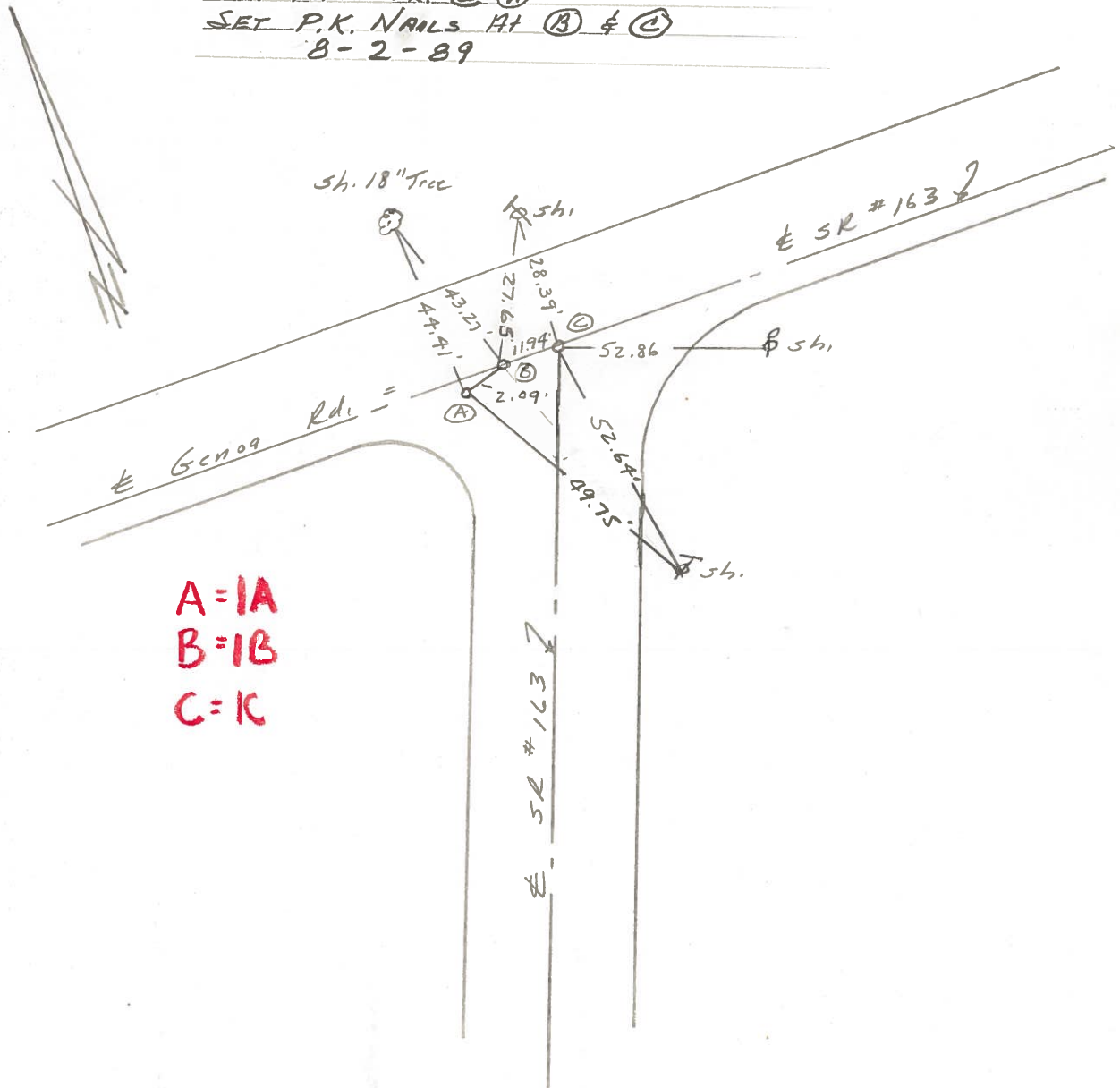
LEFT- & PAV'T. - RIGHT    

    TO     EDGE PAVEMENT

S.L.M. 30+03



SET BOAT SPK. @ (A)  
SET P.K. NAILS AT (B) & (C)  
8-2-89



**A=1A**  
**B=1B**  
**C=1C**

Q.D.O.T. DISTRICT 2 SURVEY OFFICE

Sht. 3 of     

County WOOD S.R. 163

Date 5/20/81

Township TROY

Weather                     

Section 5 & 32

Temp.                     

T6N, R12E

Personnel CRONIN

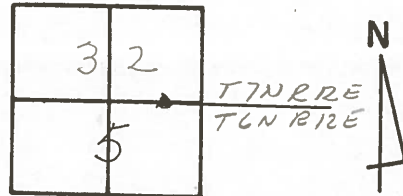
RIPPLE

GEYMAN

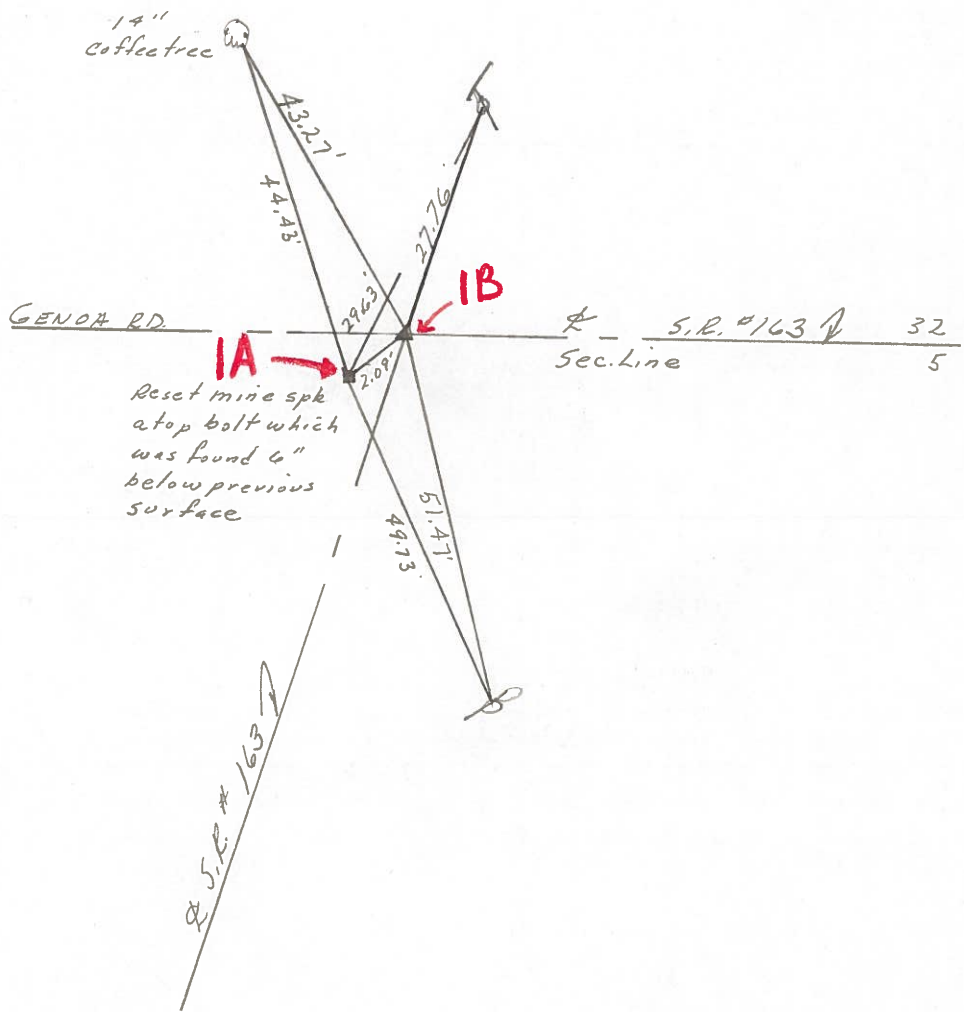
MOSSER

BARBOUR

# 1



29+96.98  
Reset PK. & washer

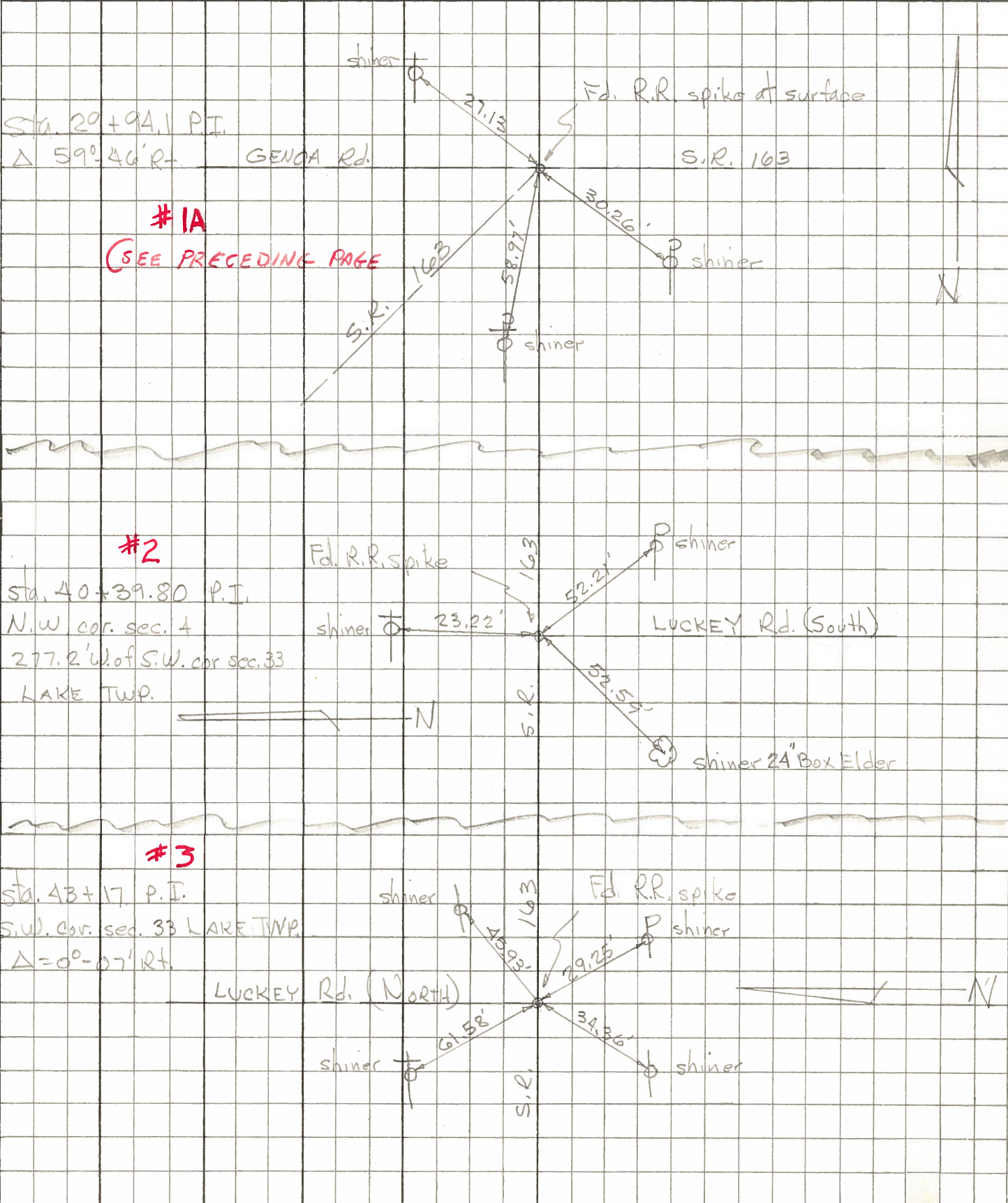


PERSONNEL	TITLE	PERSONNEL	TITLE	COUNTY	DATE
Tomsic					
Weuser					
Granata					

S. R. 13 WEATHER \_\_\_\_\_

SEC. T TEMP. \_\_\_\_\_

DESCRIPTION	LEFT	CENTER LINE	RIGHT	JOB NO.
-------------	------	-------------	-------	---------





PERSONNEL TITLE PERSONNEL TITLE

COUNTY Wood

DATE 3-5-69

Schneider

Mosser

Barbour

Sots

S. R. 163

WEATHER Fair

SEC. U.S. #206 I-280

TEMP. 35'

DESCRIPTION

Ties for Control Points

JOB NO.

LEFT

CENTER LINE

RIGHT

P.I.  
43+03  
R.R. spk.  
4" down

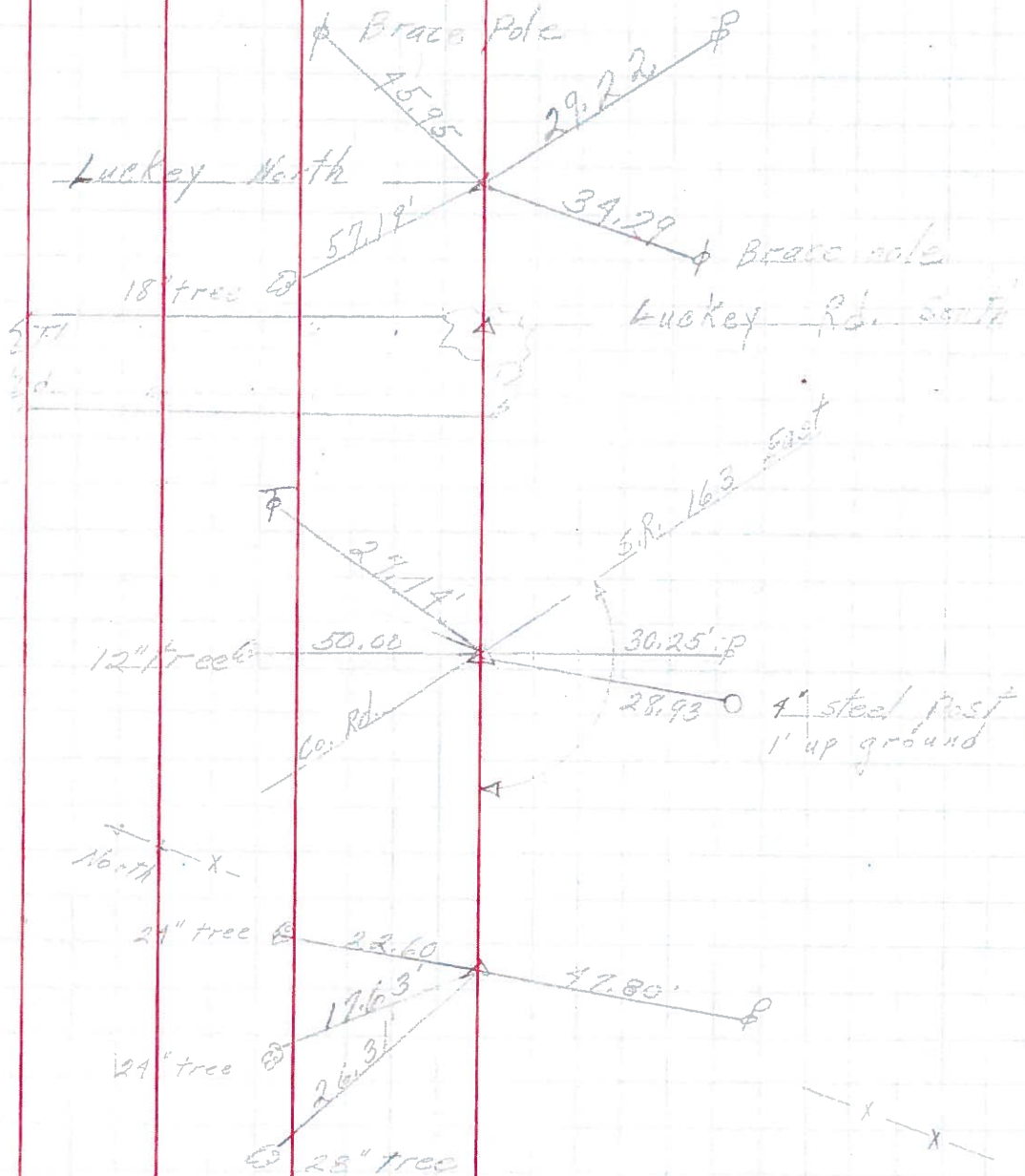
**3**

P.I.  
30+07  
R.R. spk.  
6" down

**1**

P.I.  
17+46  
Iron Pin  
6" down

**OA**



PERSONNEL	TITLE	PERSONNEL	TITLE

COUNTY Wood DATE 04/11/60  
 S. R. #163 SWORDEN  WEATHER 3-7-68  
 SEC. T TEMP \_\_\_\_\_

DESCRIPTION \_\_\_\_\_ LEFT \_\_\_\_\_ CENTER LINE \_\_\_\_\_ RIGHT \_\_\_\_\_ JOB NO. \_\_\_\_\_

Sta. 0+00  
 R.R. spike to U.S. 20' f.  
 S.R. #163 (BRASS Mon)

#311

Shiner in 28" maple S.E. 78.99  
 Shiner in 30" maple S. 73.30  
 Shiner in T.P. S.W. 42.82  
 Shiner in P.P. N.W. 66.63  
 Shiner in T.P. N.E. 72.43

Sta. 0+59.77  
 X on line stone  
 N. line of U.S. 20' f.  
 S.R. #163

#312

0

Did Not Find

Enc. hitching post <sup>gone</sup> E.N.E. 21.70  
 Shiner in 12" Catalpa <sup>gone</sup> N.E. 48.85  
 Shiner in 30" maple N.W. 71.70  
 Can church steps (bottom) N.W. 95.50

Sta. 3+23.2 +16  
 R.R. spike in pipe

#313

checked OK 3-7-68

Shiner in 12" Walnut N.E. 41.75  
~~N.E. corner of garage S.W. 77.54~~  
~~S.E. cor. concrete curb Bott. N.W. 70.12~~  
 Shiner in 10" Walnut S.E. 68.68  
 Shiner in 18" Walnut E. 37.50  
 62

Sta. 17+50  
 Iron pipe - 7.35' W of d  
 of road.

#314

OA

OK 3-5-68

Shiner in P S.E. 47.80  
 Shiner in 24" tree N 22.60  
 " " " " W 17.63  
 " " 28" Tree SW 26.31

Sta. 29+94.1  
 R.R. spike P.I.

#315

IA

OK 3-7-68

Shiner in 8" butternut N.W. 50.00  
 Shiner in con. post N.W. 31.85  
 Iron con. post S.E. 28.92  
 Shiner in 14" maple S.E. 42.00  
 Shiner in P. Pole S.E. 30.20  
 Shiner in T. Pole S.S.W. 60.00  
 Shiner in T. Pole N.W. 27.15

PERSONNEL	TITLE	PERSONNEL	TITLE

COUNTY Wood DATE OK 1/2/57  
SWORDEN ✓ 4/11/60  
 S. R. # 163 WEATHER  
Silvester 9/24/69  
 SEC. I TEMP

DESCRIPTION	LEFT	CENTER LINE	RIGHT	JOB NO.
-------------	------	-------------	-------	---------

Sta. 0+00  
 R.R. spike to U.S. #20  
 S.E. #163 (BRASS MON)

#311

Shiner in 28" maple S.E. 78.99  
 79.20  
 Shiner in 30" maple S. 73.30  
 73.00  
 Shiner in T.P. S.W. 42.82  
 42.50  
 Shiner in P.P. N.W. 66.63  
 Shiner in T.P. N.E. 72.43

Sta. 0+59.97  
 X-on line stone  
 N. line of U.S. #20  
 S.E. #163

#312  
 0

Did Not Find

Conc. hitching post gone E.N.E. 21.70  
 Shiner in 12" catalpa gone N.E. 48.85  
 Shiner in 30" maple N.W. 71.90  
 Con. church steps (bottom) N.W. 95.58  
 95.81  
 Shiner in T.P. E. 29.61  
 X Top curb S.E. 42.49  
 X Top curb S.W. 48.44

Sta. 3+23.2  
 R.R. spk. in pipe

#313

Shiner in 12" walnut N.E. 41.15  
~~N.E. corner of parsonage S.W. 97.50~~  
~~S.E. corner conc curb Bott. N.W. 90.12~~  
 Shiner in 10" walnut S.E. 68.55  
 Shiner in 18" Walnut E. 37.50  
 55

Sta. 17+50  
 Iron pipe - 7.35' w of d Pavmt  
 of road. 4.00

#314  
 OA

Shiner in 24" Catalpa S.W. 26.34  
 " " " " W. 17.65  
 " " " " N.W. 22.57  
 " " 30" walnut S. 58.42

Sta. 29+94.1  
 R.R. spk. P.I.

#315  
 1A

Shiner in 8" butternut N.W. 50.00  
 50.1  
 Shiner in cor. post N.N.W. 31.85  
 Iron cor. post S.E. 28.93  
 Shiner in 14" maple S.E. 42.70  
 Shiner in P. Pole S.E. 30.20  
 Shiner in T. Pole S.S.W. 60.00  
 58.97  
 Shiner in T. Pole N.W. 27.15

PERSONNEL	TITLE	PERSONNEL	TITLE

COUNTY Wood DATE OK 1/6/58  
SWORDEN ✓ 4/11/60  
 S. R. #163 WEATHER \_\_\_\_\_  
 SEC. I. TEMP. \_\_\_\_\_

DESCRIPTION	LEFT	CENTER LINE	RIGHT	JOB NO.
Sta. 0+00 R.R. spike & U.S. #204 S.R. #163 (BRASS MON)	#311		Shiner in 28" maple S.E. 78.99 79.20' Shiner in 30" maple S. 73.30' 73.34' Shiner in T.P. S.W. 42.85' 82 Shiner in P.P. N.W. 66.63 Shiner in T.P. N.E. 73.43	
Sta. 0+59.97 X-on line stone N. line of U.S. #204 S.R. #163	#312 O	Did Not Find	gone Conc. hitching post E.N.E. 21.70 gone Shiner in 12" catalpa N.E. 48.85 Shiner in 30" maple N.W. 71.90' Con church steps (bottom) N.W. 95.55	
Sta. 3+23.2 R.R. spk. in pipe	#313	over 11' from 150'	Shiner in 12" Walnut N.E. 41.15 N.E. Cor. Pdn. of parsonage S.W. 97.50 S.E. Cor. Conc. curb Bott. N.W. 90.12' Shiner in 10" Walnut S.E. 68.75 73 Shiner in 18" Walnut E. 37.50	
Sta. 17+50 Iron pipe - 7.35' W of & of road.	#314 OA			
Sta. 29+94.1 R.R. spk. Pl.	#315 LA	11.35' off 119.4'	50.07 50.12 Shiner in 8" butternut N.W. 50.20 Shiner in Cor. post N.N.W. 31.85' Iron cor. post S.E. 28.93 Shiner in 14" maple <sup>gone</sup> S.E. 42.70 Shiner in P. Pole S.E. 30.20 Shiner in T. Pole S.S.W. 60.00 Shiner in T. Pole N.W. 27.15	

PERSONNEL	TITLE	PERSONNEL	TITLE	COUNTY	DATE
				Stt. Wood	
				S. R. 163	WEATHER
				SEC.	TEMP.

DESCRIPTION	LEFT	CENTER LINE	RIGHT	JOB NO.
From U.S. Rt. 20 to Ottawa Co. Line				
Sta. 0+00 - Set R.R. Spike		No Book	Different in Book	
Wit { T.P.S.W. 43.45		Book TIES	1/8/58	
T.P.N.E. 14.9'		CORRECT		
Sta. 0+59.7 - N. Line of U.S. 20 at E of Rocky Rd.				
X Chiseled on Limestone				
Wit { Conc. Hitch. Post N.E. 21.5'			7 in Book	
Cor. Church step N.W. 98.65'			95.55 in Book	
T.P.S. 48.3'				
Sta. 3+23.2 - Brass Rod in Iron Pipe				
N.E. Cor. of Church Lot - 25' W. of E of Rd.				
Wit. { 8" Walnut W. of N. 41.42'				
6" Catalpa N.W. 25.04'			Different points in Book	
6" " S.W. 24.58'				
Sta. 17+50 - Iron Pipe - 735' W. of E of Road.				
Wit. { Stone with (+) N. of W. 30.5'				
Catalpa 8" W. 18.25'			no points in Book	
" 8" S.W. 27.08'				
Sta. 29+94.1 P.I. - Iron Pin 23.4' S. of Iron Post				
Wit. { (+) on rock N.E. 57.55'			Different in Book	
(+)" " S.W. 44.50'				
Sta. 40.+39.80 - N.W. Cor. Sec. 4 Troy Twp. 277.2' W. of S.W. Cor. Sec. 33 Lake Twp. (No Witnesses)				
			in Book #1	
Sta. 43.+17 P.I. - Iron Rod - S.W. Cor. Sec. 33 Lake Twp. $\Delta = 0^{\circ} - 07' Rt.$				
Wit. { Conc. Mkr. N.E. 28.8'				
" " N.W. 48.55'		found	Different in Book	
(+ on Rock S.W. 40.01'				

1A

2

3