

O.D.O.T. DISTRICT 2 SURVEY OFFICE (USE ONLY)

PERSONNEL

REFERENCE NO. 1 B

SHEET 5 OF 21

NOTES ASTON

DATE 10/12/23

ROUTE SR 163

H.C. NIESE

WEATHER CLOUDY

COUNTY WOOD

R.C. ASTON

TEMP. 60°

TOWNSHIP LAKE

DWG BY ASTON

PID CHIP SEAL

SECTION 32

T 6 N R 12 E

TYPE MONUMENT MAG/WASHER

ON SURFACE - ~~BELOW~~ ON

OFFSET Q PAVEMENT 16.8' LT : ~~RT~~

3.7' LT TO LT EDGE PAVEMENT

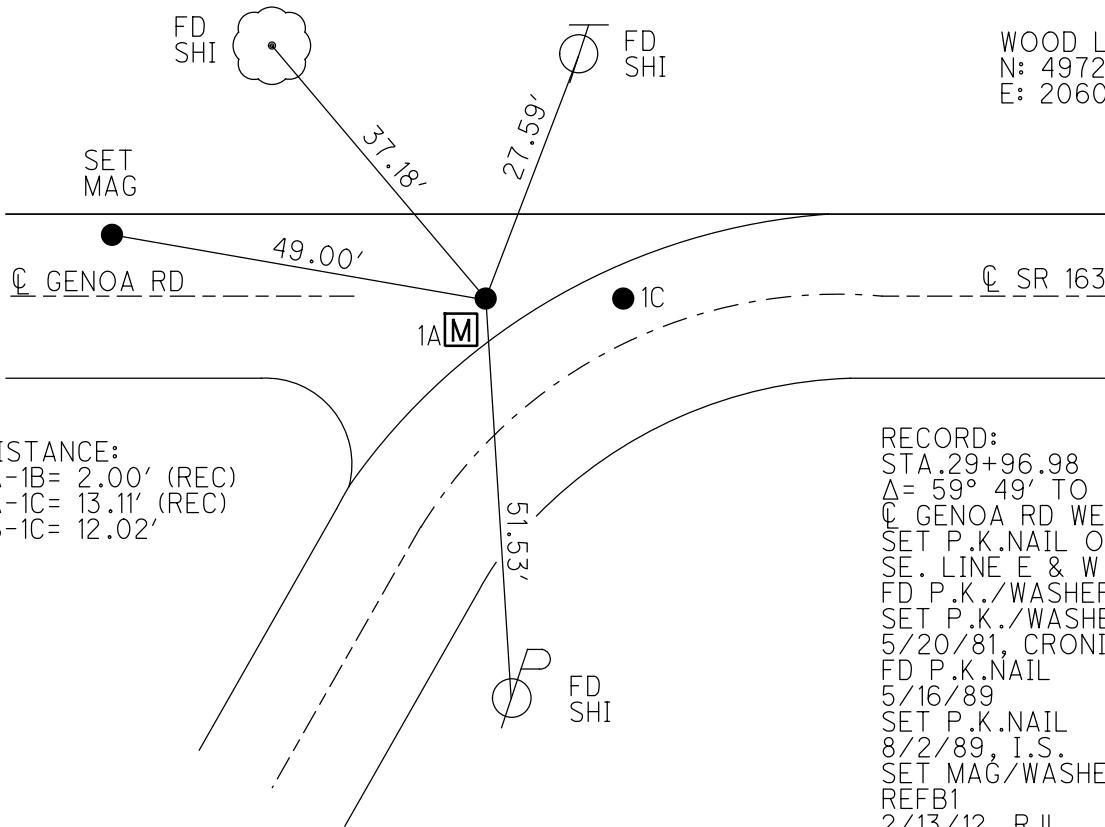
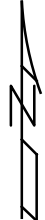
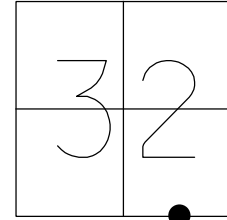
STATION: 29+96.68

HORIZ.DATUM: NAD83(2011)

GEOID: NAVD88 2018

GRID: NORTHING: 674862.240

EASTING: 1695612.906



WOOD LDP:
N: 497273.247
E: 206097.597

DISTANCE:
1A-1B= 2.00' (REC)
1A-1C= 13.11' (REC)
1B-1C= 12.02'

RECORD:
STA. 29+96.98
Δ = 59° 49' TO
Q GENOA RD WEST
SET P.K.NAIL ON
SE. LINE E & W
FD P.K./WASHER
SET P.K./WASHER
5/20/81, CRONIN
FD P.K.NAIL
5/16/89
SET P.K.NAIL
8/2/89, I.S.
SET MAG/WASHER
REFB1
2/13/12, RJL
APPEARS TO BE
1/8 COR, ITS ON
SEC LINE & IS
CLOSE TO SPLIT
ON DISTANCE
FD MAG/WASHER
8/21/14, EBW
REF1B
6-14-23, JMR
10-12-23, TDN

O.D.O.T. DISTRICT 2 SURVEY OFFICE (USE ONLY)

PERSONNEL _____ REFERENCE NO. 1 B SHEET 1 OF 2
 NOTES O'DONNELL DATE 08/09/2017 ROUTE SR 163
 H.C. LEU WEATHER SUNNY COUNTY WOOD
 R.C. HOMAN TEMP. 73° TOWNSHIP LAKE
 SECTION 32
 T 7 N R 12 E

TYPE MONUMENT SET MAG & WASHER FROM TIES

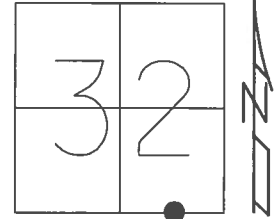
ON SURFACE - ~~BELOW~~ - ON _____

LEFT - ☺ PAV'T - ~~RIGHT~~ 16.8'

3.7' LT TO LT EDGE PAVEMENT

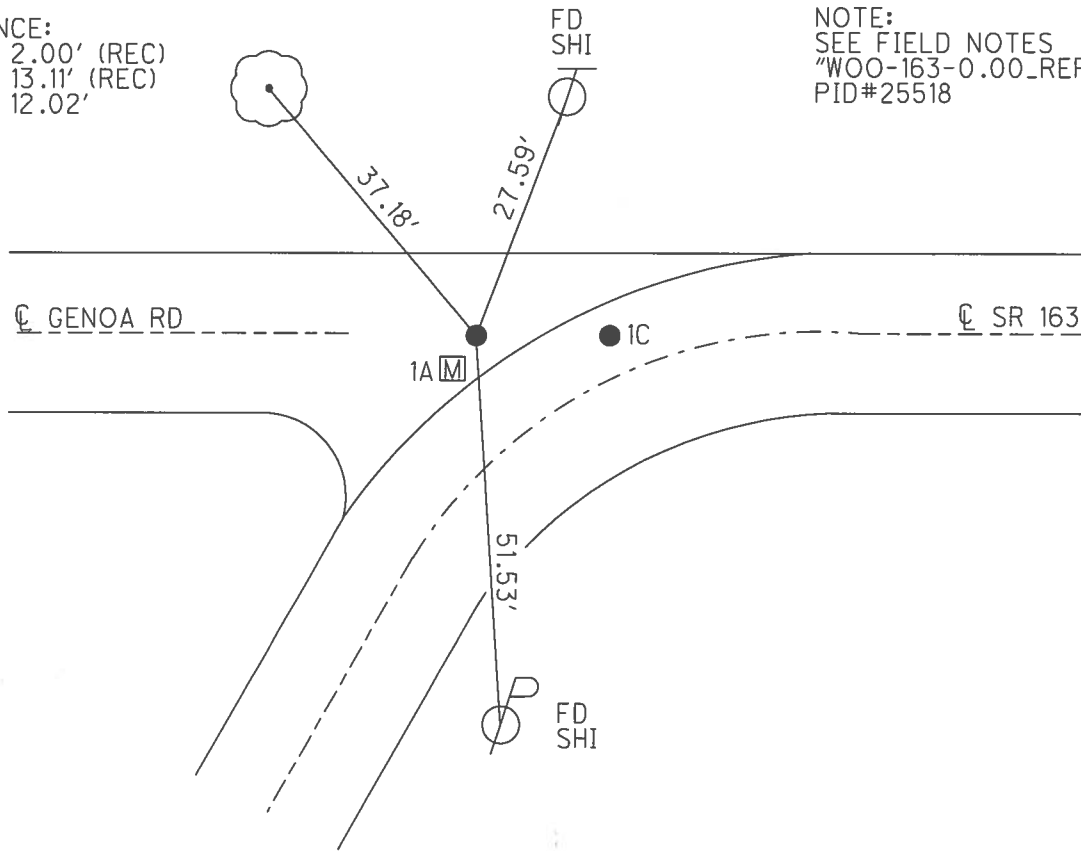
S.L.M. 29+96.68

Grid: Northing: 674862.240 Easting: 1695612.906



DISTANCE:
 1A-1B= 2.00' (REC)
 1A-1C= 13.11' (REC)
 1B-1C= 12.02'

NOTE:
 SEE FIELD NOTES
 "WOO-163-0.00_REF TIES"
 PID#25518



STA.29+96.98
 $\Delta = 59^\circ 49'$ TO
 ☺ GENOA RD WEST
 SET P.K.NAIL ON
 SE. LINE E & W
 FD P.K./WASHER
 SET P.K./WASHER
 5/20/81, CRONIN

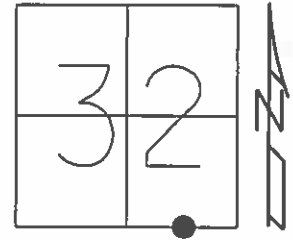
FD P.K.NAIL
 5/16/89
 SET P.K.NAIL
 8/2/89, I.S.
 RESET W/TIES
 MAG/WASHER
 GPS, REFB1
 2/13/12, RJL

APPEARS TO BE
 1/8 COR, ITS ON
 SEC LINE & IS
 CLOSE TO SPLIT
 ON DISTANCE

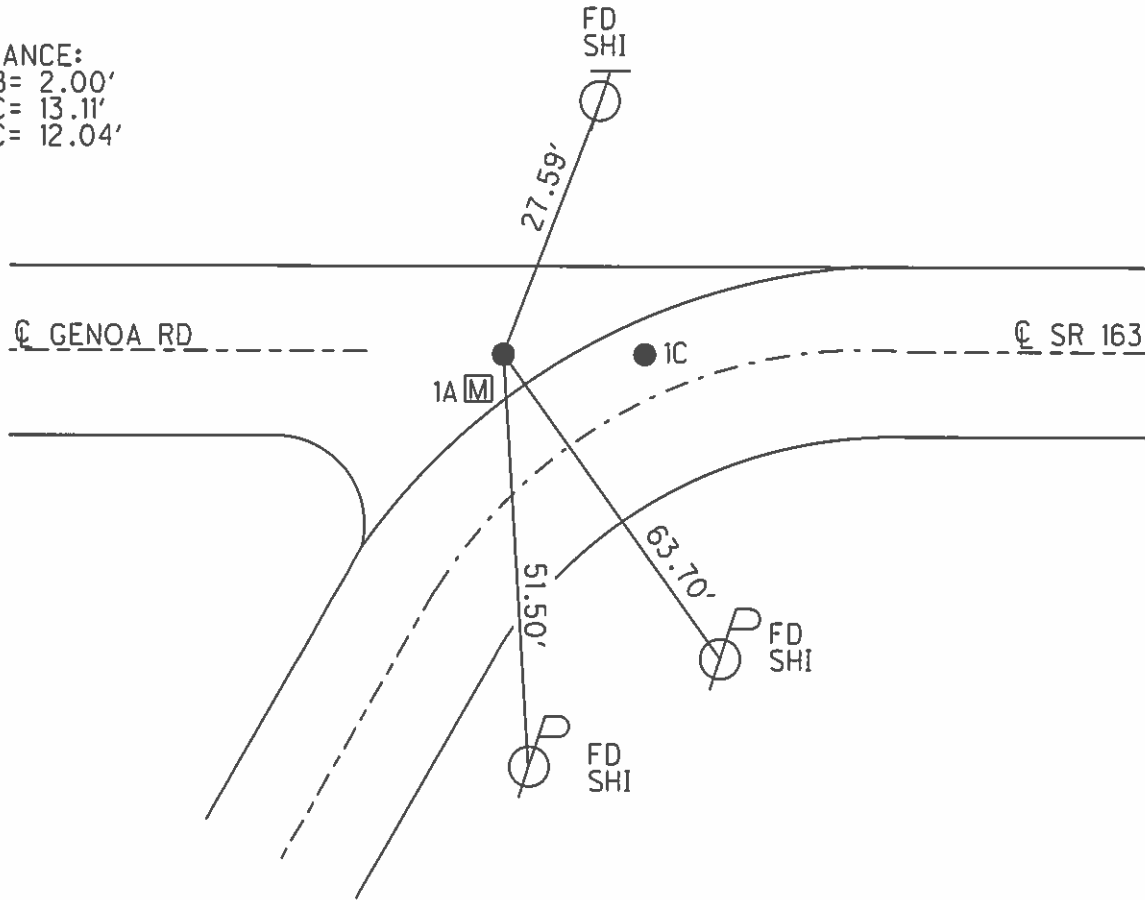
O.D.O.T. DISTRICT 2 SURVEY OFFICE (USE ONLY)

PERSONNEL _____ REFERENCE NO. 1 B SHEET 5 OF 21
 NOTES CODER _____ DATE 7/30/13 ROUTE SR 163
 H.C. ROUSOS _____ WEATHER CLEAR COUNTY WOOD
 R.C. RHOADES _____ TEMP. 78° TOWNSHIP LAKE
 _____ WESTFALL _____ SECTION 32
 _____ T 7 N R 12 E

TYPE MONUMENT MAG/WASHER
 ON SURFACE - ~~BELOW~~ ON _____
 LEFT - ☉ PAV'T - ~~RIGHT~~ 16.8'
3.7' LT TO LT EDGE PAVEMENT
 S.L.M. 29+96.68
 Grid: Northing: 674862.224 Easting: 1695612.876



DISTANCE:
 1A-1B= 2.00'
 1A-1C= 13.11'
 1B-1C= 12.04'



RECORD: P.I.
 STA. 29+94.1
 FD IPIN
 4/15/46, BRUBAKER
 $\Delta = 59^\circ 46' \text{ RT}$
 FD R.R.SPIKE
 AT SURFACE
 4/10/73, TOMSIC

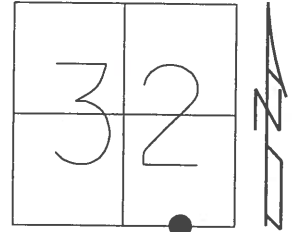
STA. 29+96.98
 $\Delta = 59^\circ 49' \text{ TO}$
 ☉ GENOA RD WEST
 SET P.K.NAIL ON
 SE. LINE E & W
 FD P.K./WASHER
 SET P.K./WASHER
 5/20/81, CRONIN

FD P.K.NAIL
 5/16/89
 SET P.K.NAIL
 8/2/89, I.S.
 RESET W/TIES
 MAG/WASHER
 GPS, REFB1
 2/13/12, RJL

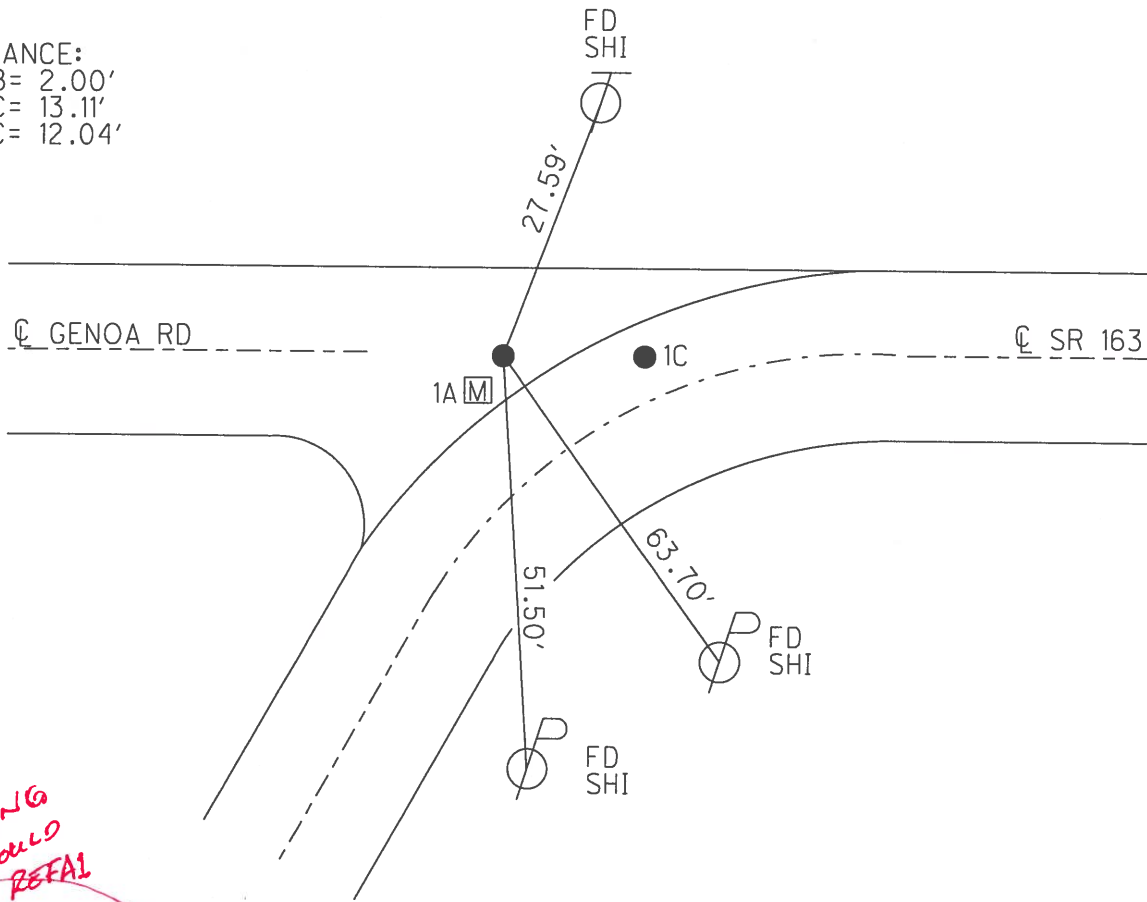
O.D.O.T. DISTRICT 2 SURVEY OFFICE (USE ONLY)

PERSONNEL _____ REFERENCE NO. 1 B SHEET 5 OF 21
 NOTES CODER DATE 7/30/13 ROUTE SR 163
 H.C. ROUSOS WEATHER CLEAR COUNTY WOOD
 R.C. RHOADES TEMP. 78° TOWNSHIP LAKE
WESTFALL SECTION 32
 T 7 N R 12 E

TYPE MONUMENT MAG/WASHER
 ON SURFACE - ~~BELOW~~ ON _____
 LEFT - ☉ PAV'T - ~~RIGHT~~ 16.8'
3.7' LT TO LT EDGE PAVEMENT
 S.L.M. 29+96.68
 Grid: Northing: 674862.224 Easting: 1695612.876



DISTANCE:
 1A-1B= 2.00'
 1A-1C= 13.11'
 1B-1C= 12.04'



*ON WRONG
 TIE SHOULD
 BE ON RETAI*

RECORD: P.I.
 STA. 29+94.1
 FD IPIN
 4/15/46, BRUBAKER
 $\Delta = 59^\circ 46' RT$
 FD R.R.SPIKE
 AT SURFACE
 4/10/73, TOMSIC

STA. 29+96.98
 $\Delta = 59^\circ 49' TO$
 ☉ GENOA RD WEST
 SET P.K.NAIL ON
 SE. LINE E & W
 FD P.K./WASHER
 SET P.K./WASHER
 5/20/81, CRONIN

FD P.K.NAIL
 5/16/89
 SET P.K.NAIL
 8/2/89, I.S.
 RESET W/TIES
 MAG/WASHER
 GPS, REFB1
 2/13/12, RJL

O.D.O.T. DISTRICT 2 SURVEY OFFICE

PERSONNEL _____

REFERENCE NO. 1

SHEET 3 OF 14

NOTES 1. Stone

H.C. D. Curtis

R.C. J. Houscholler

DATE 16 May 89

WEATHER Cloudy

TEMP. 55°

ROUTE SR#163

COUNTY Wood

TOWNSHIP Loke

SECTION 32

T _____ R _____

TYPE MONUMENT Ⓐ = Boat Spk.
Ⓑ = PK Nail
Ⓒ = PK Nail

ON SURFACE - BELOW Surface

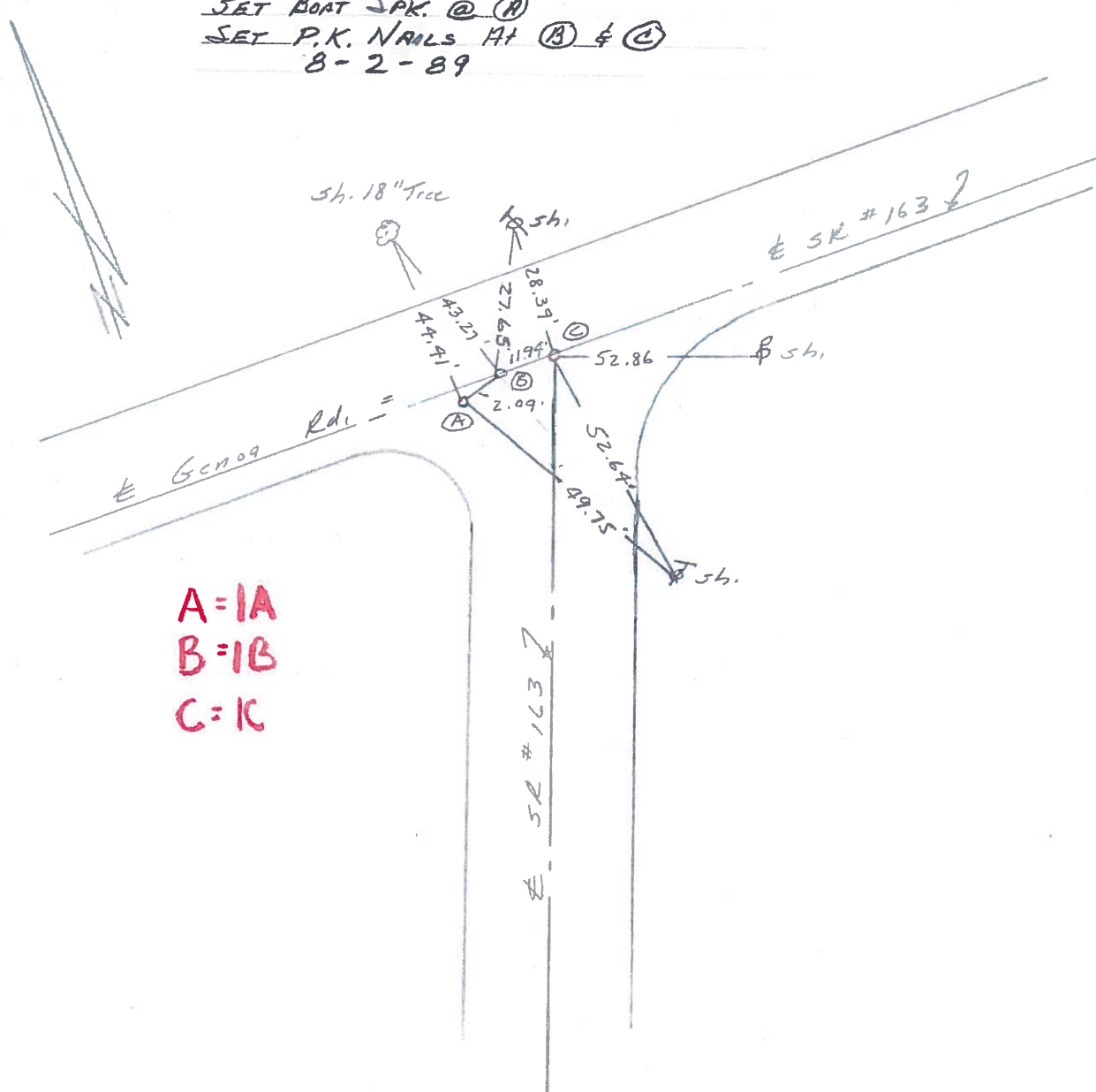
LEFT - & PAV'T. - RIGHT _____

_____ TO _____ EDGE PAVEMENT

S.L.M. 30+03



SET BOAT SPK. @ Ⓐ
SET P.K. NAILS AT Ⓑ & Ⓒ
8-2-89



A=1A
B=1B
C=1C

Q.D.O.T. DISTRICT 2 SURVEY OFFICE

Sht. 3 of

County WOOD S.R. 163

Date 5/20/81

Township T204

Weather

Section 5 E 32

Temp.

T6N, R12E

Personnel CROWIN

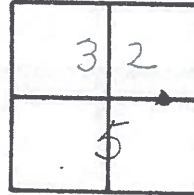
RIPPLE

GEYMAN

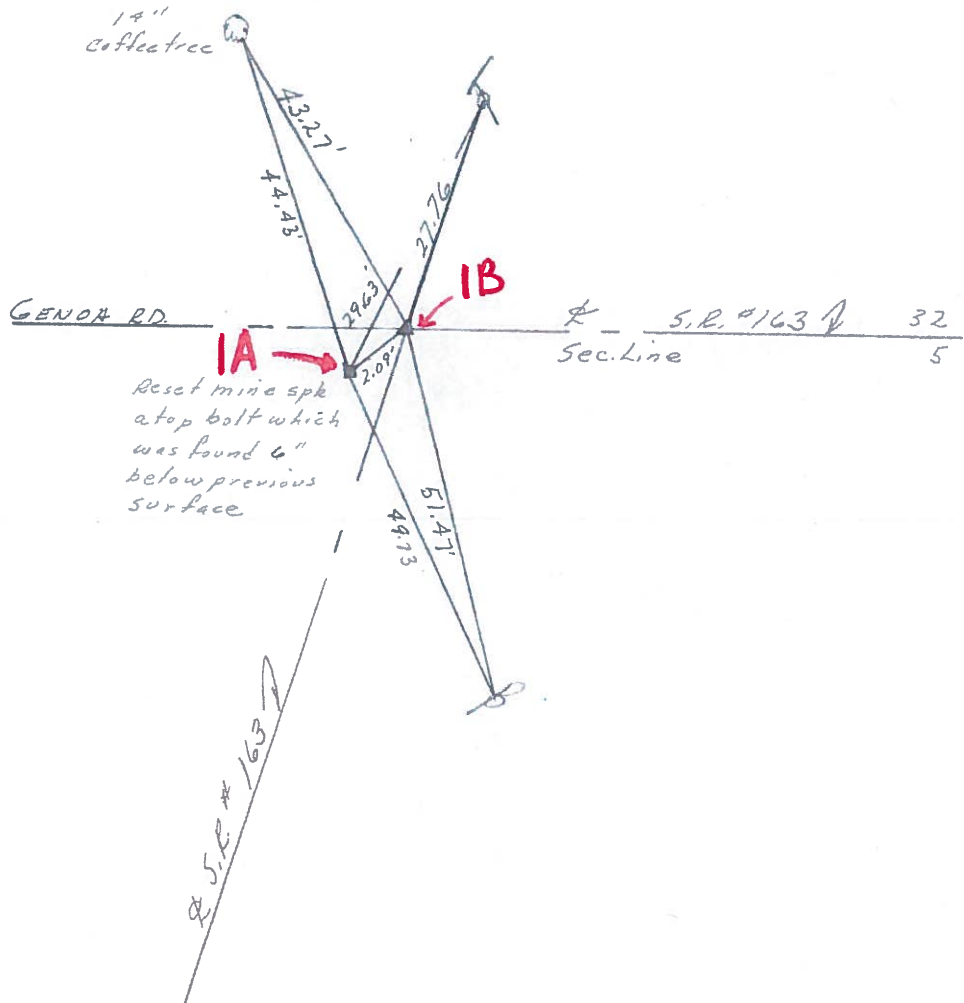
MOSSER

BARBOUR

#1



29+96.98
Reset PK. & washer



Q.D.O.T. DISTRICT 2 SURVEY OFFICE

Sht. of
S.R. 163

County WOOD

Date 8-23-78

Township TROY

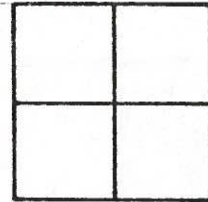
Weather CLEAR

Section

Temp. +86°

T N, R E

Personnel BURNSIDE

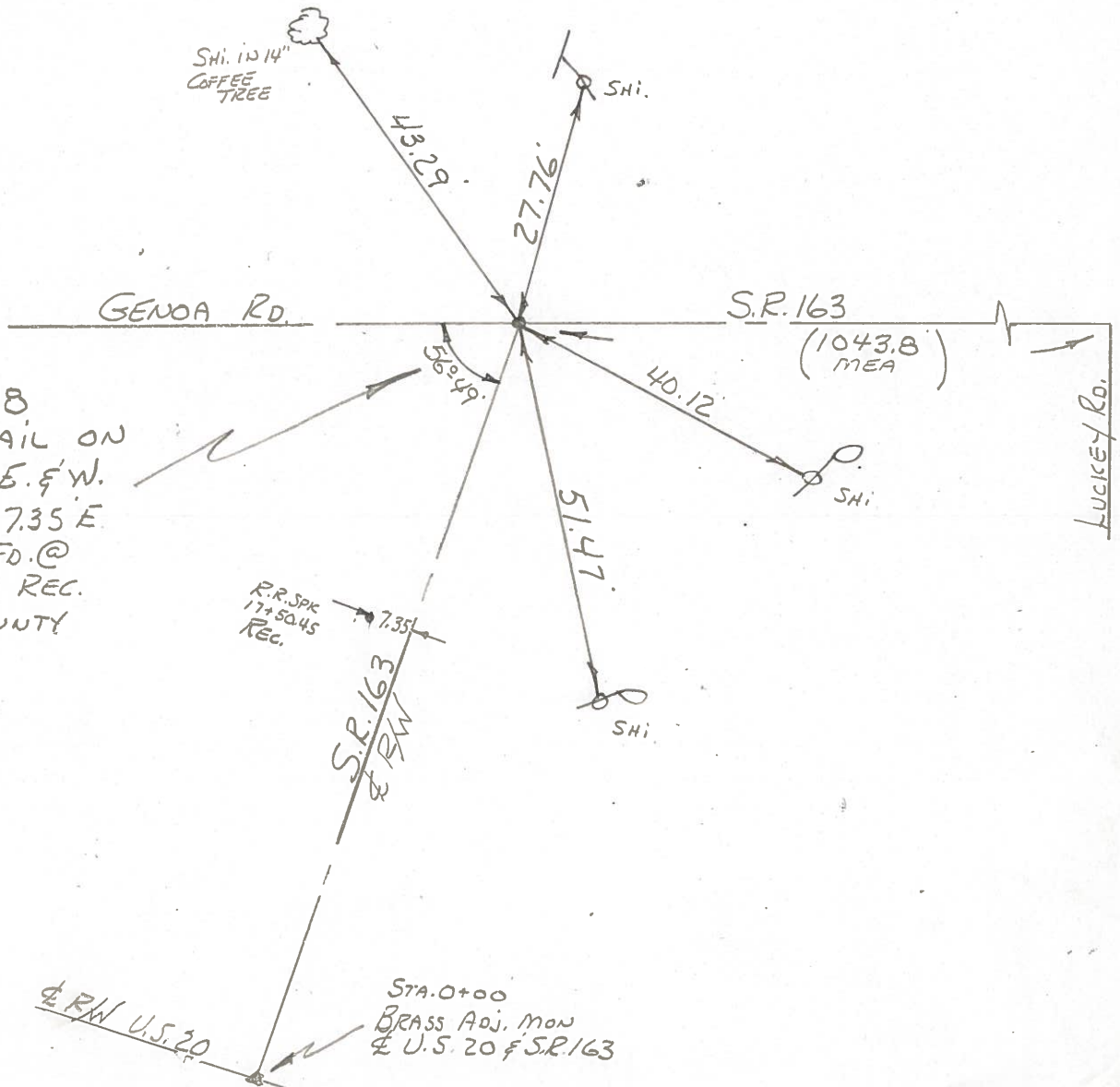


BOWERS

KNAPE

MEAD

#1B



STA. 29+96.98
 SET P.K. NAIL ON
 SEC. LINE E. & W.
 FOR A LINE 7.35 E.
 OF R.R. SPK. FD. @
 17+50.45 AS REC.
 IN WOOD COUNTY
 HOUSE.

STA. 0+00
 BRASS ADJ. MON
 & U.S. 20 & S.R. 163