

O.D.O.T. DISTRICT 2 SURVEY OFFICE (USE ONLY)

PERSONNEL

REFERENCE NO. 8

SHEET 15 OF 21

NOTES RHOADES

DATE 8/5/13

ROUTE SR 163

H.C. CODER

WEATHER FAIR

COUNTY WOOD

R.C. RHOADES

TEMP. 74°

TOWNSHIP LAKE

DWG BY RHOADES

PID 25518

SECTION 34

T 7 N R 12 E

TYPE MONUMENT MONBOX W/ 3/4" IPIN

ON SURFACE - ~~BELOW~~ ON

OFFSET C PAVEMENT 3.8' ~~RT~~ : RT

- TO - EDGE PAVEMENT

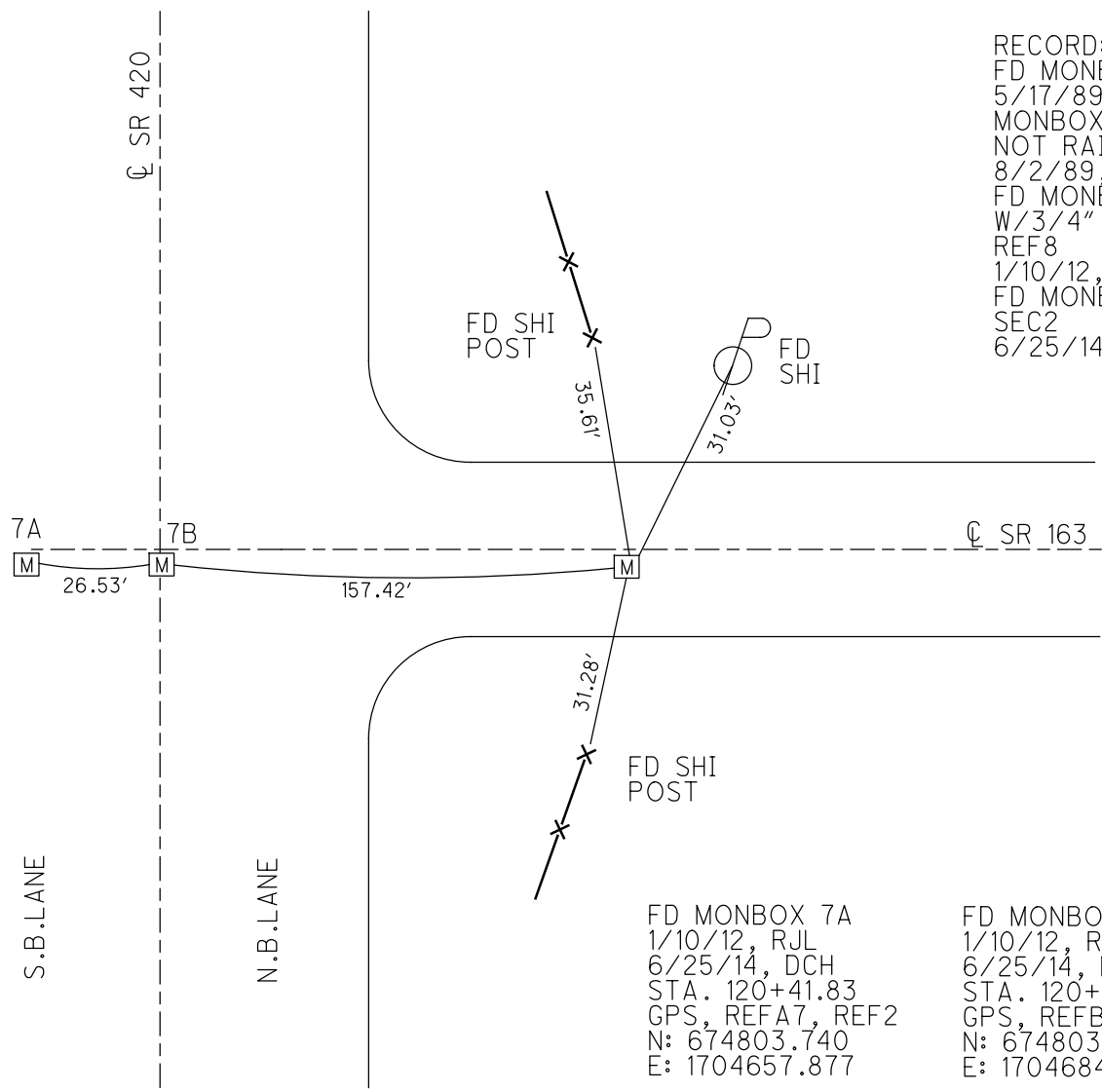
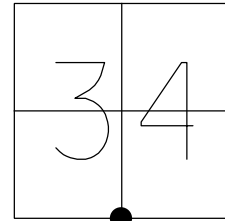
STATION: 122+25.59

HORZ.DATUM: NAD83(2011)

GEOID: NAVD88 2012A

GRID: NORTHING: 674802.643

EASTING: 1704841.659



RECORD:
 FD MONBOX
 5/17/89
 MONBOX WAS
 NOT RAISED
 8/2/89, IS
 FD MONBOX
 W/3/4" IPIN
 REF8
 1/10/12, RJL
 FD MONBOX
 SEC2
 6/25/14, DCH

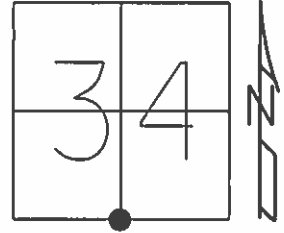
FD MONBOX 7A
 1/10/12, RJL
 6/25/14, DCH
 STA. 120+41.83
 GPS, REFA7, REF2
 N: 674803.740
 E: 1704657.877

FD MONBOX 7B
 1/10/12, RJL
 6/25/14, DCH
 STA. 120+68.17
 GPS, REFB7, REFA2
 N: 674803.550
 E: 1704684.270

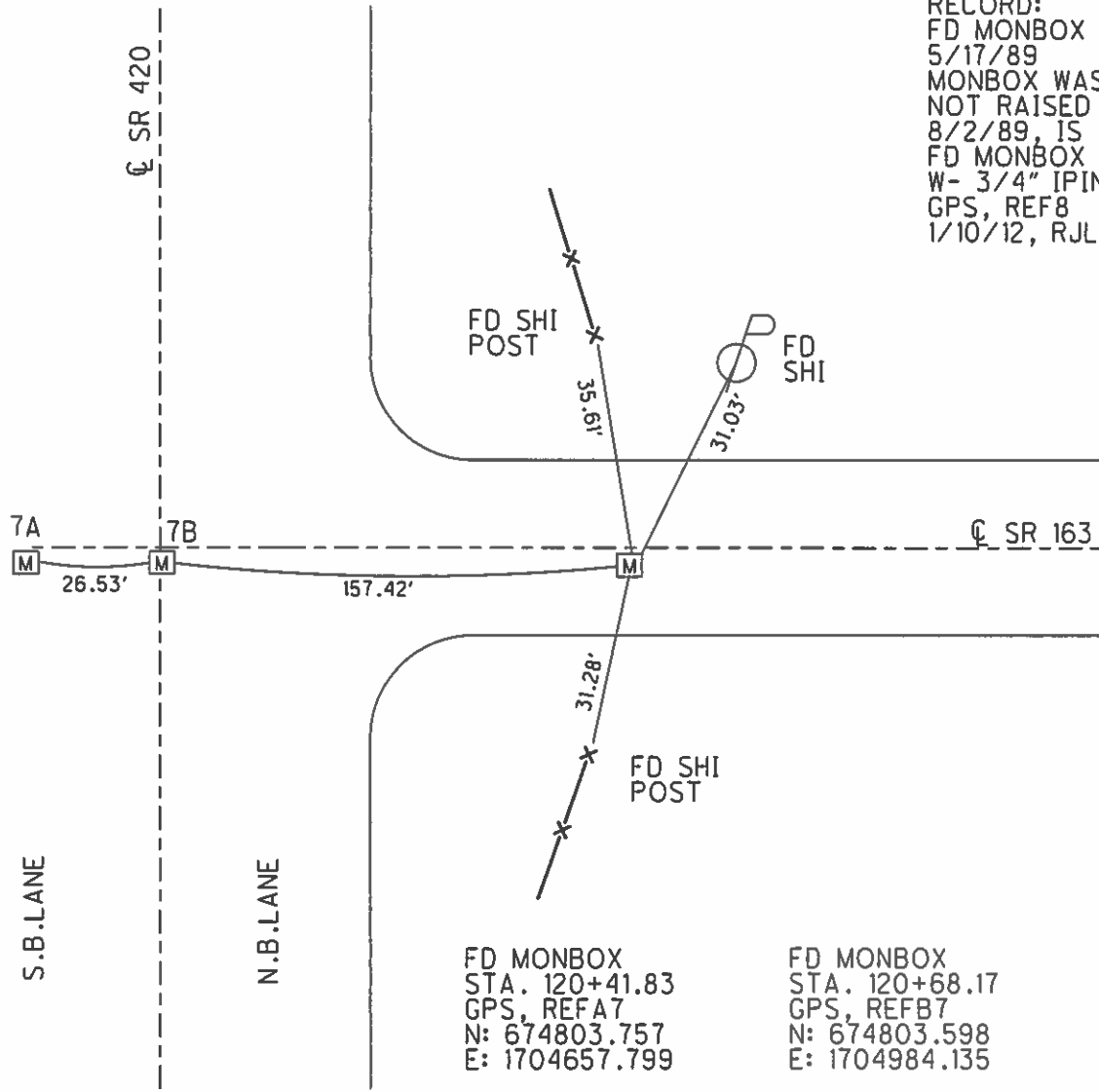
O.D.O.T. DISTRICT 2 SURVEY OFFICE (USE ONLY)

PERSONNEL _____ REFERENCE NO. 8 SHEET 15 OF 21
 NOTES RHOADES DATE 8/5/13 ROUTE SR 163
 H.C. CODER WEATHER FAIR COUNTY WOOD
 R.C. RHOADES TEMP. 74° TOWNSHIP LAKE
 _____ SECTION 34
 _____ T 7 N R 12 E

TYPE MONUMENT MONBOX
 ON SURFACE - ~~BELOW~~ ON
~~LEFT~~ - ☉ PAV'T - RIGHT 3.8'
TO EDGE PAVEMENT
 S.L.M. 122+25.59
 Grid: Northing: 674802.665 Easting: 1704841.555



RECORD:
 FD MONBOX
 5/17/89
 MONBOX WAS
 NOT RAISED
 8/2/89, IS
 FD MONBOX
 W- 3/4" IPIN
 GPS, REF8
 1/10/12, RJL



FD MONBOX
 STA. 120+41.83
 GPS, REFA7
 N: 674803.757
 E: 1704657.799

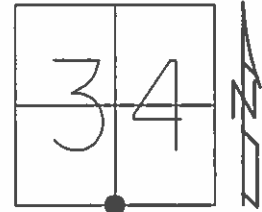
FD MONBOX
 STA. 120+68.17
 GPS, REFB7
 N: 674803.598
 E: 1704984.135

O.D.O.T. DISTRICT 2 SURVEY OFFICE (USE ONLY)

PERSONNEL _____ REFERENCE NO. 2 B SHEET 3 OF 5

NOTES RHOADES DATE 8/5/13 ROUTE SR 420
 H.C. CODER WEATHER FAIR COUNTY WOOD
 R.C. RHOADES TEMP. 74° TOWNSHIP LAKE
 _____ SECTION 34
 _____ T 7 N R 12 E

TYPE MONUMENT MONBOX
 ON SURFACE - ~~BELOW~~ ON _____
~~LEFT~~ - Q PAV'T - RIGHT 157.42'
 - TO - EDGE PAVEMENT
 S.L.M. 104+48.40



Grid: Northing: 674802.643 Easting: 1704841.659

RECORD:
 FD MONBOX 2B
 5/17/89
 MONBOX WAS
 NOT RAISED
 8/2/89, IS
 FD MONBOX
 W- 3/4" IPIN
 GPS, REF8
 1/10/12, RJL
 FD MONBOX
 SEC2
 6/25/14, DCH

