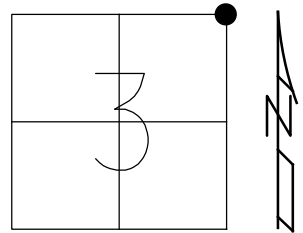


O.D.O.T. DISTRICT 2 SURVEY OFFICE (USE ONLY)

PERSONNEL _____ REFERENCE NO. 9 SHEET 16 OF 21
 NOTES ASTON DATE 10/12/23 ROUTE SR 163
 H.C. NIESE WEATHER CLOUDY COUNTY WOOD
 R.C. ASTON TEMP. 60° TOWNSHIP TROY
 SECTION 3
 DWG BY ASTON PID CHIP SEAL T 6 N R 12 E

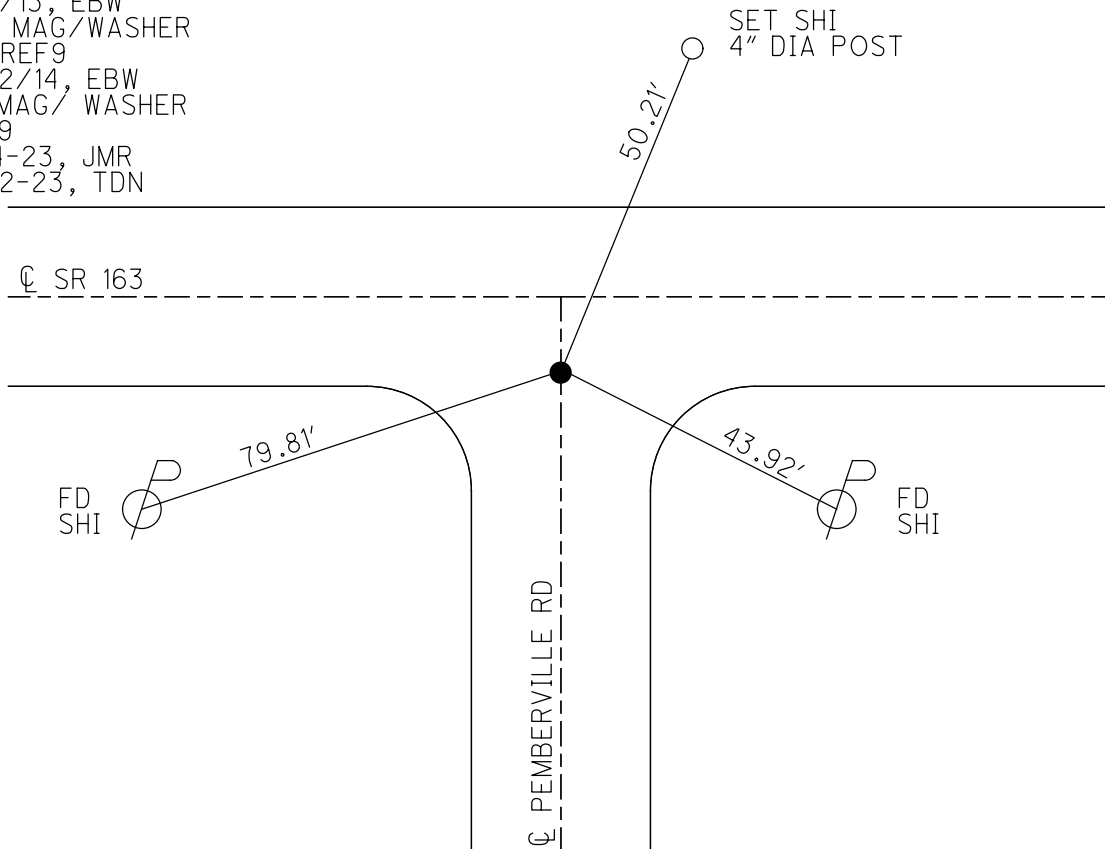
TYPE MONUMENT MAG/WASHER
 ON SURFACE - ~~BELOW~~ ON
 OFFSET \odot PAVEMENT 9.8' ~~±~~ : RT
- TO - EDGE PAVEMENT
 STATION: 146+93.51



HORZ.DATUM: NAD83(2011) GEOID: NAVD88 2018
 GRID: NORTHING: 674774.193 EASTING: 1707309.379

RECORD:
 FD R.R.SPIKE
 5/17/89
 SET SM.R.R.SPIKE
 8/2/89, IS
 FD SM.R.R.SPIKE
 REF9
 1/10/12, RJL
 7/3/13, EBW
 SET MAG/WASHER
 NEWREF9
 8/22/14, EBW
 FD MAG/ WASHER
 REF9
 6-14-23, JMR
 10-12-23, TDN

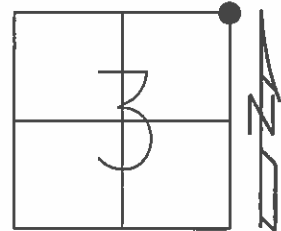
WOOD LDP:
 N: 496191.081
 E: 205479.089



O.D.O.T. DISTRICT 2 SURVEY OFFICE (USE ONLY)

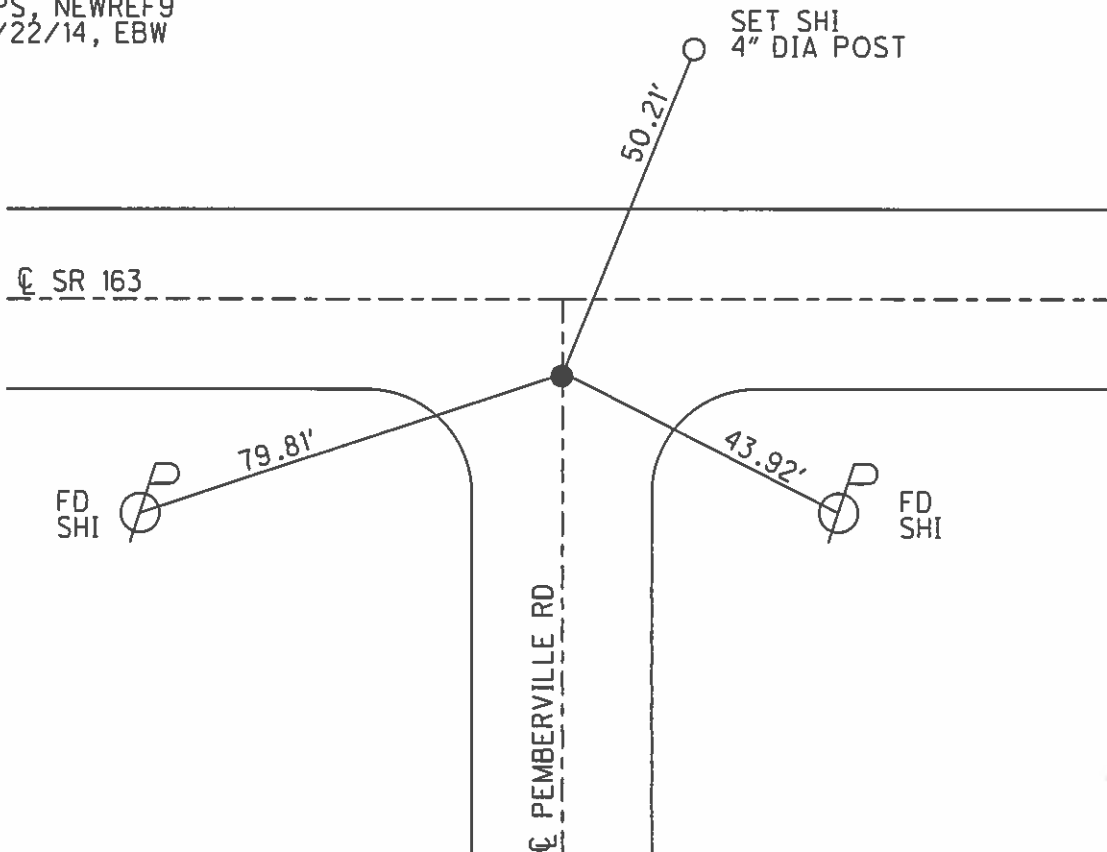
PERSONNEL _____ REFERENCE NO. 9 SHEET 16 OF 21
 NOTES ROUSOS DATE 7/3/13 ROUTE SR 163
 H.C. WESTFALL WEATHER FAIR COUNTY WOOD
 R.C. ROUSOS TEMP. 82° TOWNSHIP TROY
 _____ SECTION 3
 _____ T 6 N R 12 E

TYPE MONUMENT SM.R.R.SPIKE
 ON SURFACE - ~~BELOW~~ ON
~~LEFT~~ - ☉ PAV'T - RIGHT 9.8'
- TO - EDGE PAVEMENT
 S.L.M. 146+93.51



Grid: Northing: 674774.193 Easting: 1707309.379

RECORD:
 FD R.R.SPIKE
 5/17/89
 SET SM.R.R.SPIKE
 8/2/89, IS
 FD SM.R.R.SPIKE
 GPS, REF9
 1/10/12, RJL
 SET MAG/WASHER
 GPS, NEWREF9
 8/22/14, EBW



O.D.O.T. DISTRICT 2 SURVEY OFFICE

PERSONNEL

REFERENCE NO. 9

SHEET 12 OF 14

NOTES 1. Stone

H.C. D. Curtis

R.C. J. Horscholder

DATE 17 May 89

WEATHER Fair

TEMP. 68°

ROUTE SR #163

COUNTY Wood

TOWNSHIP Troy

SECTION 3

T R

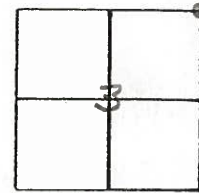
TYPE MONUMENT RR Spk.

ON SURFACE - BELOW 2" deep

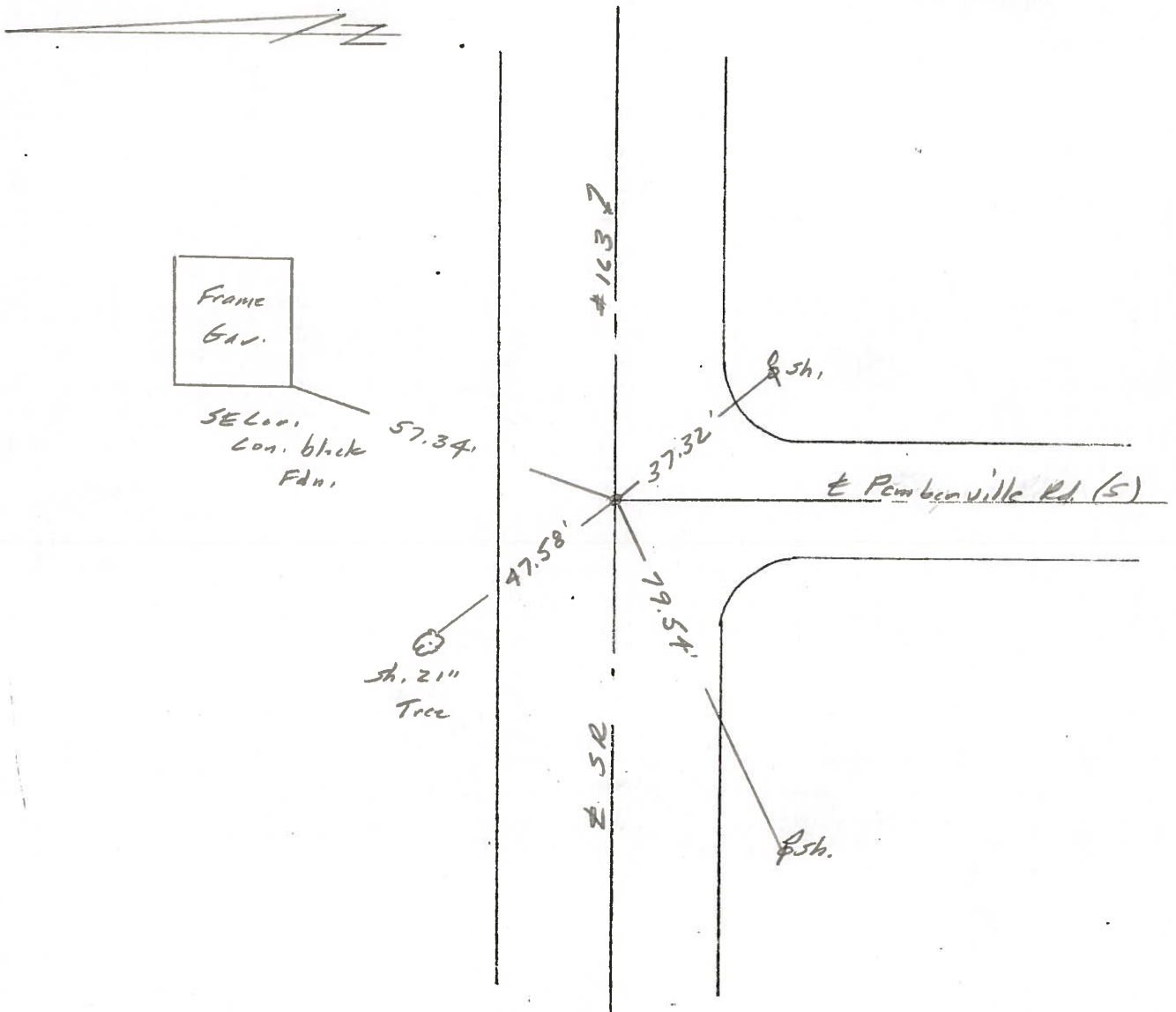
LEFT - \odot PAV'T. - RIGHT

 TO EDGE PAVEMENT

S.L.M. 196+98

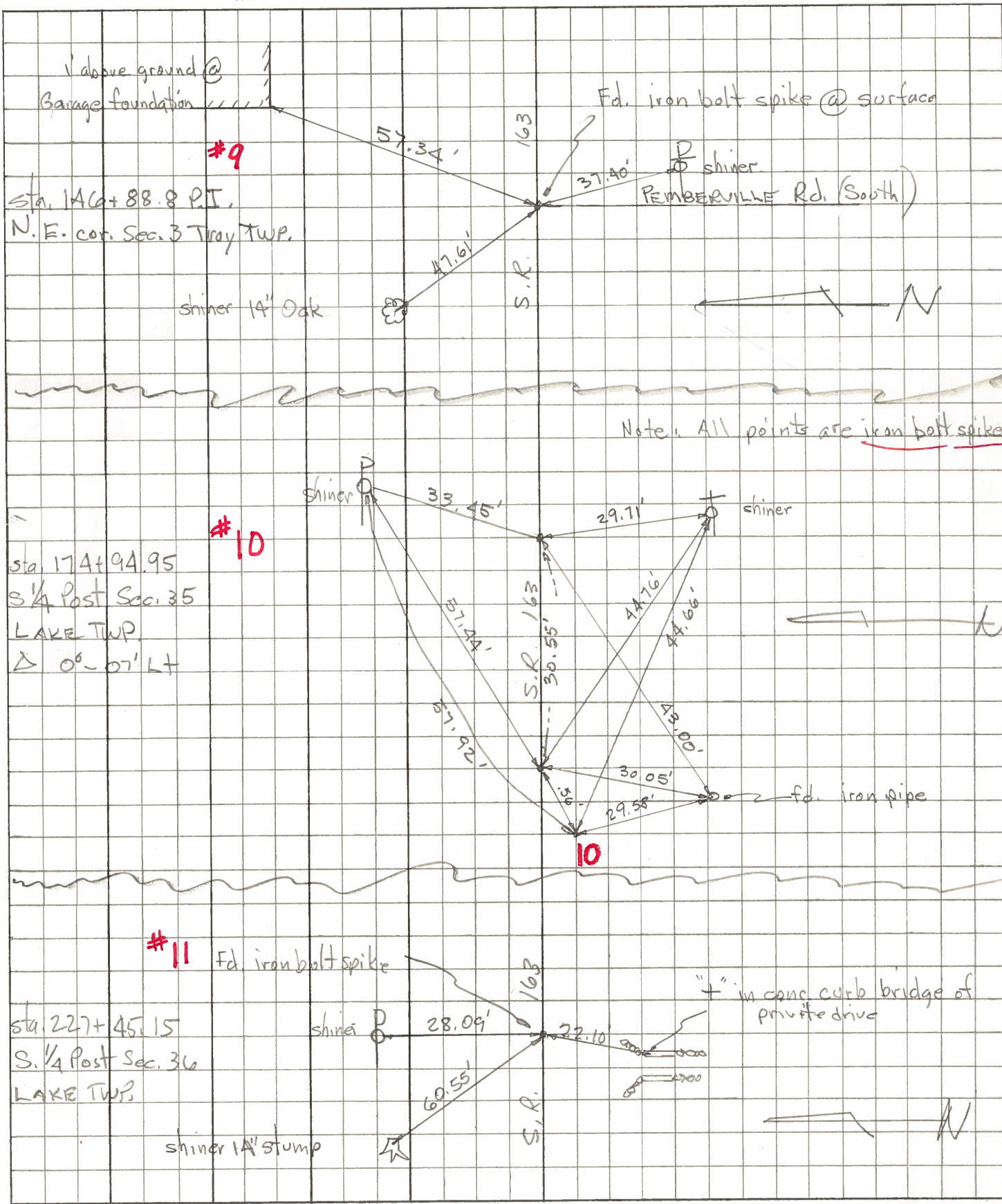


SET SM. R.R. SPK. TO SURFACE
8-2-89



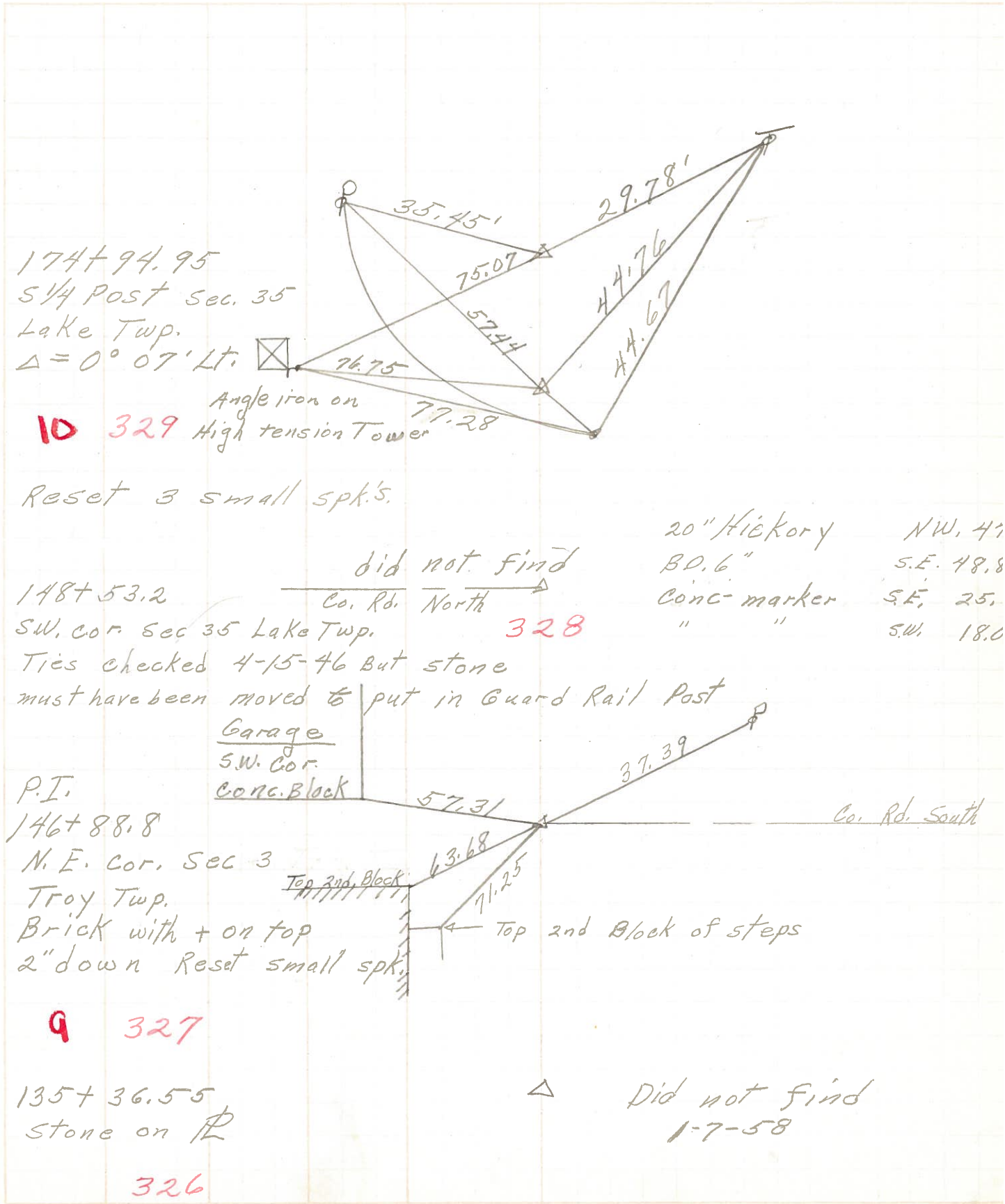
| | | | | | | | |
|----------------|-------|-----------|-------|--------|-------------|---------|-----------------------|
| PERSONNEL | TITLE | PERSONNEL | TITLE | COUNTY | <u>Wood</u> | DATE | <u>April 11, 1973</u> |
| <u>Tomsic</u> | | | | S. R. | <u>163</u> | WEATHER | |
| <u>Neuser</u> | | | | SEC. | | TEMP. | |
| <u>Granata</u> | | | | | | | |

DESCRIPTION _____ LEFT _____ CENTER LINE _____ RIGHT _____ JOB NO. _____



| PERSONNEL | TITLE | PERSONNEL | TITLE | COUNTY | DATE | WEATHER | TEMP. |
|-----------|-------|-----------|-------|-------------------------|--------|---------|-------|
| Schneider | | | | Wood | 9-28-7 | Cool | 55° |
| Mosser | | | | S. R. 163 | | | |
| Barbour | | | | SEC. I 280 to Ottawa Co | | | |
| Geyman | | | | | | | |

DESCRIPTION Ties for Control Points JOB NO. _____



174+94.95
S 1/4 Post Sec. 35
Lake Twp.
Δ = 0° 07' Lt.

ID 329

Angle iron on
High tension Tower

Reset 3 small spk's.

148+53.2
SW. cor Sec 35 Lake Twp.
Ties checked 4-15-46 But stone
must have been moved to put in Guard Rail Post

20" Hickory NW, 41
B.O. 6" S.E. 48.8
Conc. marker S.E. 25.
" " SW. 18.0

Garage
SW. Cor.
Conc. Block

P.I.
146+88.8
N.E. Cor. Sec 3
Troy Twp.
Brick with + on top
2" down Reset small spk.

9 327

135+36.55
Stone on R

326

Δ Did not find
1-7-58

| | | | | | |
|-----------|-------|-----------|-------|------------|---------|
| PERSONNEL | TITLE | PERSONNEL | TITLE | COUNTY | DATE |
| | | | | Wood | 1-7-58 |
| | | | | S. R. #163 | WEATHER |
| | | | | SEC. I | TEMP. |

| | | | | |
|-------------|------|-------------|-------|---------|
| DESCRIPTION | LEFT | CENTER LINE | RIGHT | JOB NO. |
|-------------|------|-------------|-------|---------|

Sta. 135+36.55
 Stone - on property line
 (Did not find)
 #326 1-7-58

Sta. 146+88.8
 P.I. N.E. cor. sec. 3 Troy Twp.
 brick with x on top.
 Shiner in P.P. S.E. 36.3
 S.W. Cor. of Garage Wall N.E. 57.1
 S.E. cor. of porch wall N.W. 63.1
 9 #327

Sta. 148+53.2
 S.W. cor. sec. 35 Lake Twp.
 Ties check 4/15/46. but
 stone must have been moved
 to put in Guard rail post
 20" Hickory N.W. 47.50
 B.O. 6" S.E. 48.80
 Conc. marker S.E. 25.5
 Conc. marker S.W. 18.0
 (Did not find)
 #328 1-7-58

Found bolt set by Toledo Edison 1/21/66
 Ties are to this point. Morrison
 Sta. 174+94.95
 S. 1/4 post sec. 35 Lake twp.
 $\Delta = 0^{\circ}-07' Lt.$
 Shiner in P.P. NNW. 27.01'
 Shiner in T.P. SE. 53.36'
 Shiner in P.P. WNW. 92.80'

10 #329

Sta. 200+24 (Turnpike)
 P.P. spk in Glass incelator Bradner rd.
 N.W. cor. Sec. 1 Troy Twp.
 Shiner in P.P. N.E. 36.00
 N.E. cor. E Wall 15.70
 N.W. cor. W. wall 16.70
 #330 (Did not find)
 1-7-58

PERSONNEL TITLE PERSONNEL TITLE COUNTY Wood DATE 4/15/46
Brubaker _____
Morgan _____ S. R. 163 WEATHER Rain
Morrison _____ SEC. I TEMP. 65°
 DESCRIPTION Ties - From U.S. Rt. #20 to Ottawa Co. Line JOB NO. _____
LEFT CENTER LINE RIGHT

S.H. 439 - S.R. 163

#332 Sta. 227+45.15 Found Stone from old Ref; Set Iron pin on surface, 4/1
 P.P. N. 28.80' S. 1/4 post Sec. 36 Lake
 Wit. { 14" Maple N.W. 61.25' || in Book #1
 T.P. S.E. 40.55'

#331 Sta. 201+30.35 found Stone, put iron pin on top; S.W. Cor. Sec. 36 Lake
 Conc. Mkr. S.E. -> Not in condition for use.
 " " S.W. 27.92'
 Wit. { 2' X 2' Conc. post 40.71' in Book #1
 P.P. N.E. 36.79'
 Guy pole E. S.E. 25.12'

#330 Sta. 200+24 found Glass knob, old ties Good. N.W. Cor. Sec. 1 Troy C
 Set R.R. Spike on surface
 P.P. N.E. 36.05' in Book #1
 Wit. { N.E. Cor. E. Wall 15.71'
 N.W. Cor. W. Wall 16.75'

#328 Sta. 148+53.2 S.W. Cor. Sec. 35 Lake Twp. (no find)
 Found knife edge stone by the side of guard rail post.
 Ties didn't check. Stone must have been moved during
 construction of Guard fence in Book #1

#327 Sta. 146+88.8 P. 1. N.E. Cor. Sec. 3 Troy Twp, found brick with Cross
 on top, from old ties.
 P.P. S.E. 36.36'
 Wit. { S.W. Cor. Garage Wall 57.15' in Book #1
 S.E. " Porch " 63.7'

| | | | | | |
|-----------|-------|-----------|-------|------------|---------|
| PERSONNEL | TITLE | PERSONNEL | TITLE | COUNTY | DATE |
| | | | | Wood | |
| | | | | S. R. #163 | WEATHER |
| | | | | SEC. | TEMP. |

| DESCRIPTION | LEFT | CENTER LINE | RIGHT | JOB NO. |
|--|------|-------------|-----------------------------|---------|
| Sta. 135+36.55 - Stone on property line | | | | |
| Wit. { I. Post N. 21.1' | | | | |
| Wit. { Conc. Mkr. N.E. 22.3' | | | No Wit. in Book | |
| Wit. { " " N.W. 21.7' | | | | |
| Sta. 146+88.8 - P.I. - N.E. Cor. Sec 3 Troy Twp. $\Delta = 0^\circ - 04' Lt.$ | | | | |
| Found stone-placed brick with (+) on top. | | | | |
| Wit. { S.E. Cor. Porch wall N.W. 63.7' | | | in Book | |
| 9 { S.W. " Grage " N. 66.3 found brick | | | | |
| Sta. 148+53.2 S.W. Cor. Sec. 35 Lake Twp. - online | | | | |
| Stone (knife edge) online in bank of ditch | | | | |
| Wit. { Hickory 20" N.W. 47.50' Stone must have been moved | | | for Guard Rail post in Book | |
| Wit. { B.O. 6" S.E. 48.8' | | | | |
| Wit. { Conc. Mkr. S.E. 25.5' | | | | |
| Wit. { " " S.W. 18.0' | | | | |
| Sta. 174+94.95 - P.I. - Drove I. Pin 24' S. of Conc. Mkr. | | | | |
| 10 { S. 1/4 Post Sec. 35 Lake Twp. No find in Book | | | | |
| Stone not found - $\Delta = 0^\circ - 07' Lt.$ | | | | |
| Sta. 200+24 - Set glass knob over stone 25' N. of line | | | | |
| N.W. Cor. Sec. 1 - Troy Twp. | | | | |
| Wit. { N.E. Cor. E. Wall 15.7' found, Put R.R. Spk on top in Book | | | | |
| Wit. { N.W. Cor. W. " 16.75' 36.05 N.E.P.P. | | | | |
| Sta. 201+30.35 - Set glass over stone - S.W. Cor. 36 Lake $\Delta = 0^\circ 26'$ | | | | |
| Wit. { Conc. Mkr. S.E. 29.5' | | | | |
| Wit. { " " S.W. 28.0' found, put iron pin on top Diff. in Book | | | | |
| Wit. { Cor. Post N.E. 41.9' | | | | |
| Wit. { Steel Post N.W. 42.6' | | | | |
| Wit. { 2'x2' Conc. Post N.W. 40.75' | | | | |