

CENTER LINE SURVEY PLAT

U.S. ROUTE 23 SEC. (10.45)

WOOD COUNTY, OHIO

MONTGOMERY TWP. T4N, R12E, SEC'S. 17, 8, 4 & 5

FREEDOM TWP. T5N, R12E, SEC. 32

EXISTING CURVE DATA

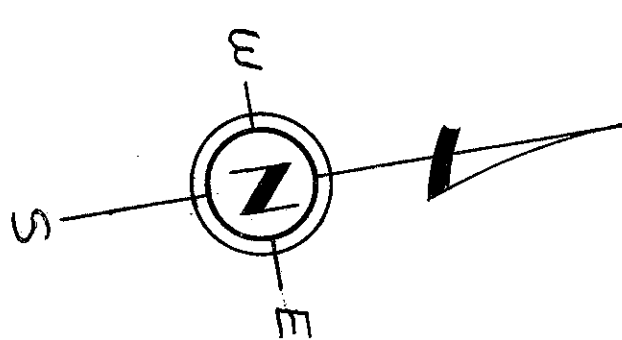
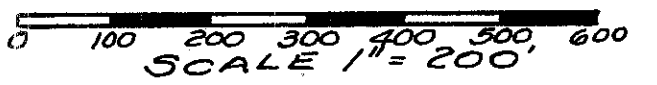
$\Delta = 33^\circ 08' \text{ Rt.}$
 $P.I. = 564 + 80.42$
 $D = 20^\circ$
 $T = 85.22'$
 $L = 165.66'$
 $E = 12.4'$
 $R = 286.48$

PROPOSED CURVE DATA

$\Delta = 33^\circ 08' \text{ Rt.}$
 $P.I. = 564 + 80.42$
 $D_c = 4^\circ 00'$
 $L_c = 428.33$
 $R_c = 1432.39$
 $\theta_s = 8^\circ$
 $L_s = 400'$
 $T_s = 627.36$
 $E_s = 66.90$

EXISTING CURVE DATA

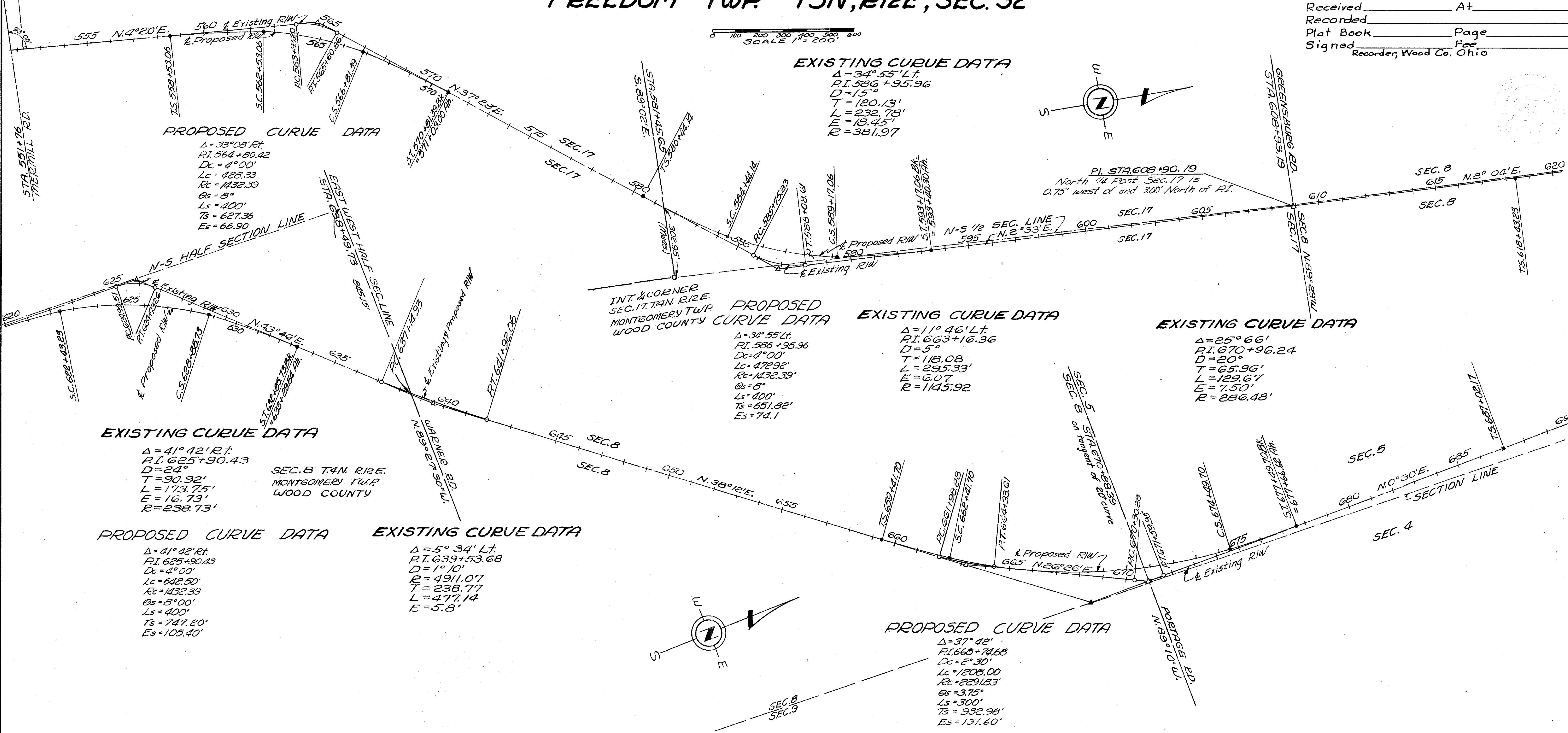
$\Delta = 34^\circ 55' \text{ Lt.}$
 $P.I. = 586 + 95.96$
 $D = 15^\circ$
 $T = 120.13'$
 $L = 232.78'$
 $E = 18.45'$
 $R = 381.97$



I hereby certify this to be a true and correct platting of the centerline of survey as determined by the Ohio Department of Highways
 Date: Thomas M. Major
 Division Deputy Director
 Registered Surveyor No. 4248

Received _____ At _____
 Recorded _____ Page _____
 Signed _____ Fee _____
 Recorder, Wood Co. Ohio

Begin Project Sta. 552+28.17



EXISTING CURVE DATA

$\Delta = 41^\circ 42' \text{ Rt.}$
 $P.I. = 625 + 90.43$
 $D = 24^\circ$
 $T = 90.92'$
 $L = 173.75'$
 $E = 16.73'$
 $R = 238.73'$

SEC. 8 T4N. R12E.
 MONTGOMERY TWP.
 WOOD COUNTY

PROPOSED CURVE DATA

$\Delta = 41^\circ 42' \text{ Rt.}$
 $P.I. = 625 + 90.43$
 $D_c = 4^\circ 00'$
 $L_c = 642.50'$
 $R_c = 1432.39$
 $\theta_s = 6^\circ 00'$
 $L_s = 400'$
 $T_s = 747.20'$
 $E_s = 105.40'$

EXISTING CURVE DATA

$\Delta = 5^\circ 34' \text{ Lt.}$
 $P.I. = 639 + 53.68$
 $D = 1^\circ 10'$
 $R = 4911.07$
 $T = 238.77$
 $L = 477.14$
 $E = 5.8'$

EXISTING CURVE DATA

$\Delta = 11^\circ 46' \text{ Lt.}$
 $P.I. = 663 + 16.36$
 $D = 5^\circ$
 $T = 118.08$
 $L = 235.33'$
 $E = 6.07$
 $R = 145.92$

PROPOSED CURVE DATA

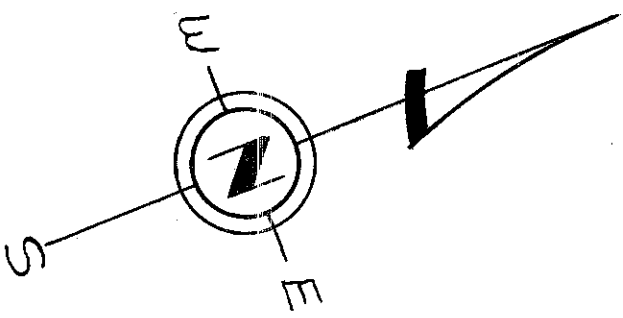
$\Delta = 34^\circ 55' \text{ Lt.}$
 $P.I. = 586 + 95.96$
 $D_c = 4^\circ 00'$
 $L_c = 472.92'$
 $R_c = 1432.39'$
 $\theta_s = 8^\circ$
 $L_s = 400'$
 $T_s = 651.82'$
 $E_s = 74.1$

EXISTING CURVE DATA

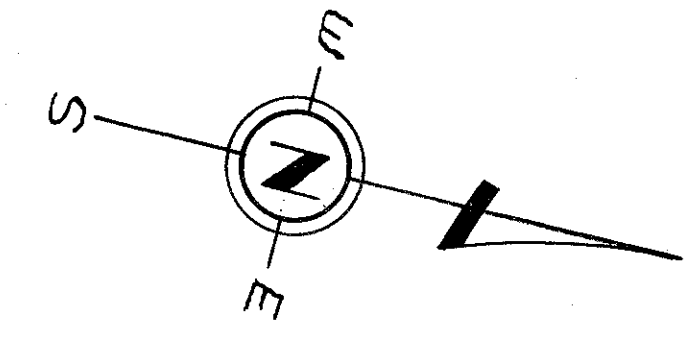
$\Delta = 25^\circ 66'$
 $P.I. = 670 + 96.24$
 $D = 20^\circ$
 $T = 65.96'$
 $L = 129.67$
 $E = 7.50'$
 $R = 286.48'$

PROPOSED CURVE DATA

$\Delta = 37^\circ 42'$
 $P.I. = 668 + 74.68$
 $D_c = 2^\circ 30'$
 $L_c = 1208.00$
 $R_c = 2291.83'$
 $\theta_s = 3.75^\circ$
 $L_s = 300'$
 $T_s = 932.98'$
 $E_s = 131.60'$



R12E #3 D-1



EXISTING CURVE DATA

$\Delta = 19^{\circ}54' R\&$
 $P.I. 72.3 + 72.74$
 $D = 15^{\circ}$
 $T = 67.01'$
 $L = 132.67'$
 $E = 5.83'$
 $R = 381.97'$

EXISTING CURVE DATA

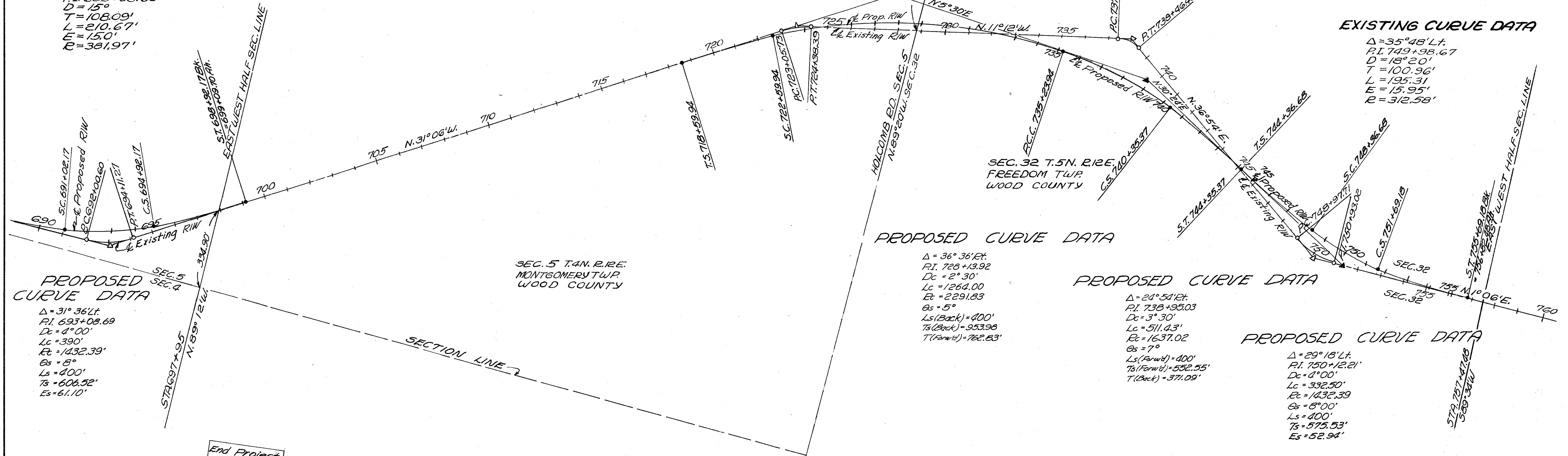
$\Delta = 48^{\circ}06' R\&$
 $P.I. 737 + 96.36$
 $D = 45^{\circ}$
 $T = 56.82'$
 $L = 106.89'$
 $E = 12.10'$
 $R = 127.32'$

EXISTING CURVE DATA

$\Delta = 31^{\circ}36' L\&$
 $P.I. 693 + 08.69$
 $D = 15^{\circ}$
 $T = 108.09'$
 $L = 210.67'$
 $E = 15.0'$
 $R = 381.97'$

EXISTING CURVE DATA

$\Delta = 35^{\circ}48' L\&$
 $P.I. 749 + 98.67$
 $D = 18^{\circ}20'$
 $T = 100.96'$
 $L = 195.31'$
 $E = 15.95'$
 $R = 312.58'$



PROPOSED CURVE DATA

$\Delta = 31^{\circ}36' L\&$
 $P.I. 693 + 08.69$
 $D_c = 4^{\circ}00'$
 $L_c = 390'$
 $E_t = 1432.39'$
 $\theta_s = 8^{\circ}$
 $L_s = 400'$
 $T_s = 606.52'$
 $E_s = 61.10'$

PROPOSED CURVE DATA

$\Delta = 36^{\circ}36' R\&$
 $P.I. 728 + 13.92$
 $D_c = 2^{\circ}30'$
 $L_c = 1264.00$
 $E_t = 2291.83$
 $\theta_s = 5^{\circ}$
 $L_s(Back) = 400'$
 $T_s(Back) = 953.98$
 $T(Forward) = 762.53'$

PROPOSED CURVE DATA

$\Delta = 24^{\circ}54' R\&$
 $P.I. 738 + 95.03$
 $D_c = 3^{\circ}30'$
 $L_c = 511.43'$
 $E_t = 1637.02$
 $\theta_s = 7^{\circ}$
 $L_s(Forward) = 400'$
 $T_s(Forward) = 552.55'$
 $T(Back) = 371.09'$

PROPOSED CURVE DATA

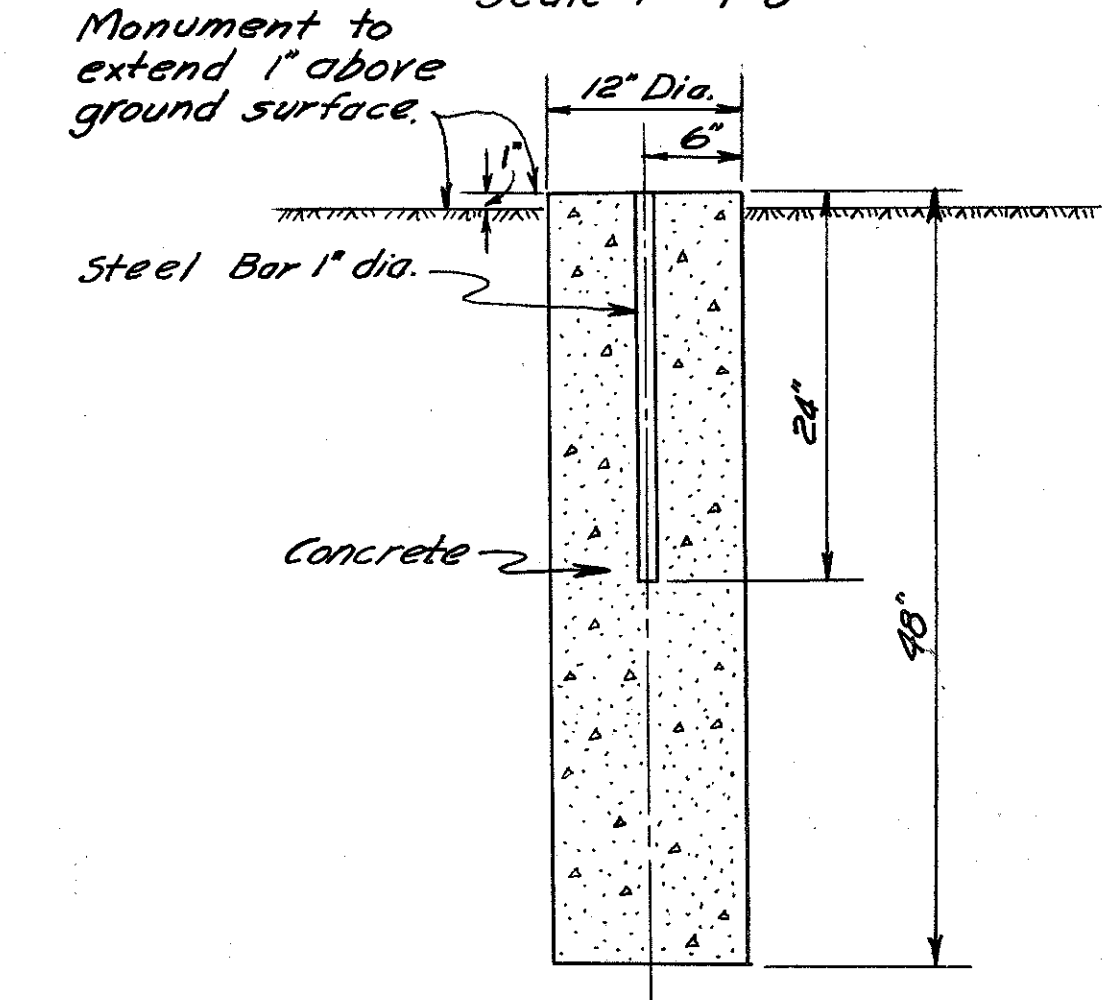
$\Delta = 29^{\circ}18' L\&$
 $P.I. 750 + 12.21'$
 $D_c = 4^{\circ}00'$
 $L_c = 332.50'$
 $E_t = 1432.39$
 $\theta_s = 8^{\circ}00'$
 $L_s = 400'$
 $T_s = 575.53'$
 $E_s = 52.94'$

End Project
Sta. 767+30

MONUMENT SUMMARY

Station	Std. Monument Assembly, RI-1	Monument as Shown in Detail
P.O.T. 551+76.00	/	
T.S. 558+53.06	/	
P.I. 564+50.42		/
S.T. 570+81.39	/	
T.S. 580+44.14	/	
P.I. 586+95.96		/
S.T. 593+77.06	/	
P.I. 608+90.19	/	
T.S. 618+43.23	/	
P.I. 625+90.43		/
S.T. 632+85.73	/	
P.O.T. 636+59.37	/	
P.I. 639+53.68	/	
P.O.T. 642+17.70	/	
T.S. 659+41.70	/	
P.I. 670+96.24	/	
S.T. 677+49.70	/	
T.S. 687+02.17	/	
P.I. 693+08.69		/
S.T. 698+92.17	/	
T.S. 718+59.94	/	
P.I. 723+72.74		/
P.C.L. 735+23.94	/	
P.I. 738+95.03		/
S.T. 744+35.37	/	
P.I. 750+12.21		/
S.T. 755+69.18	/	

MONUMENT DETAIL
Scale 1" = 1'-0"

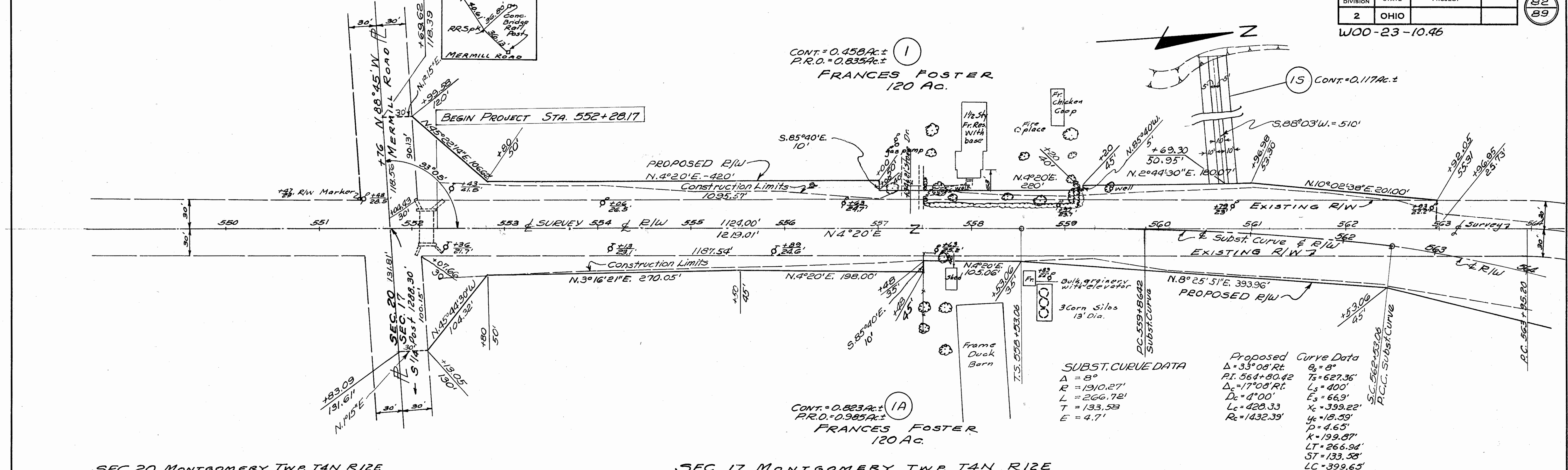


SEC. 20 MONTGOMERY TWP. T4N R12E

SEC. 17 MONTGOMERY TWP. T4N R12E

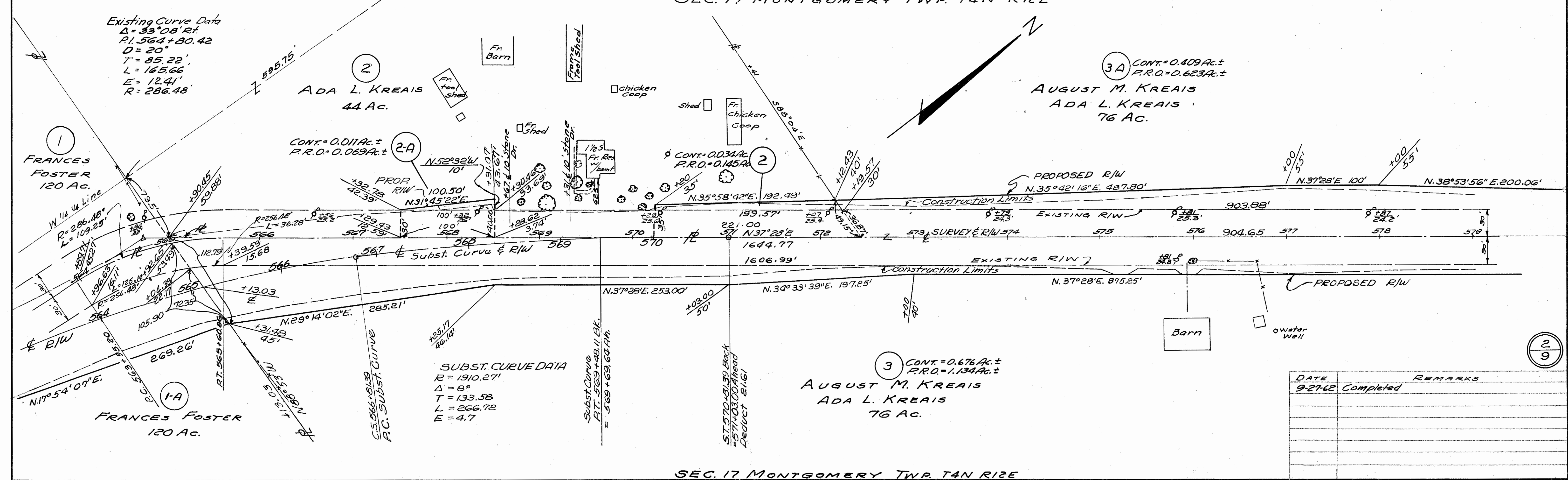
FED. RD. DIVISION	STATE	PROJECT	82 89
2	OHIO		

W00-23-10.46



SEC. 20 MONTGOMERY TWP. T4N R12E

SEC. 17 MONTGOMERY TWP. T4N R12E

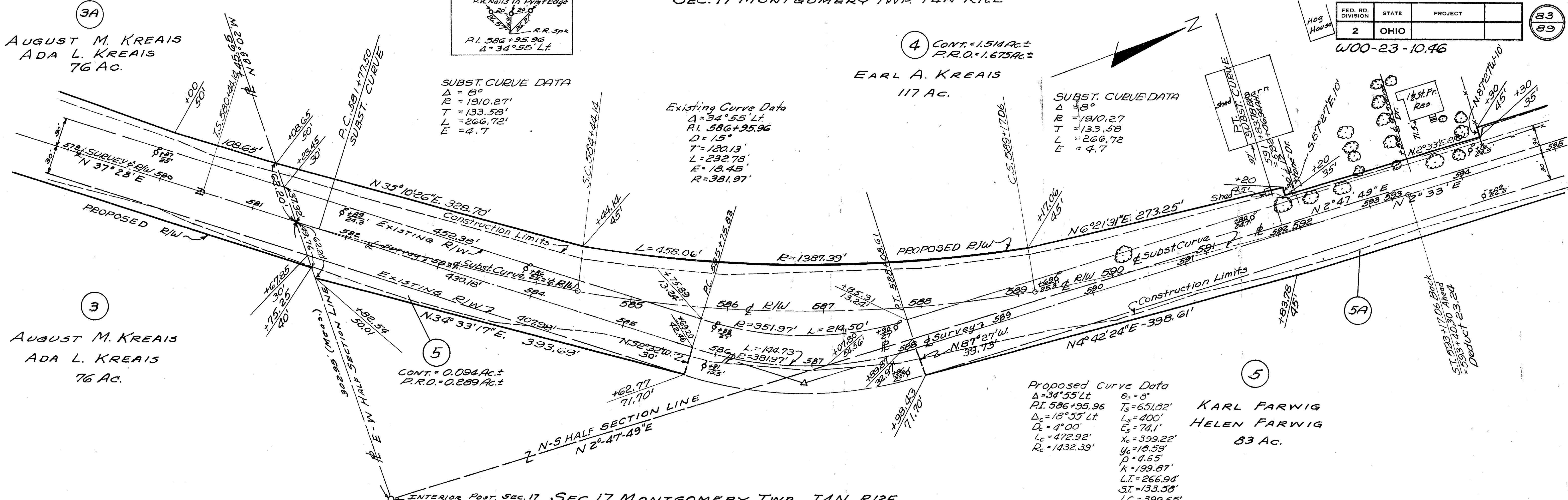


DATE	REMARKS
9-27-62	Completed

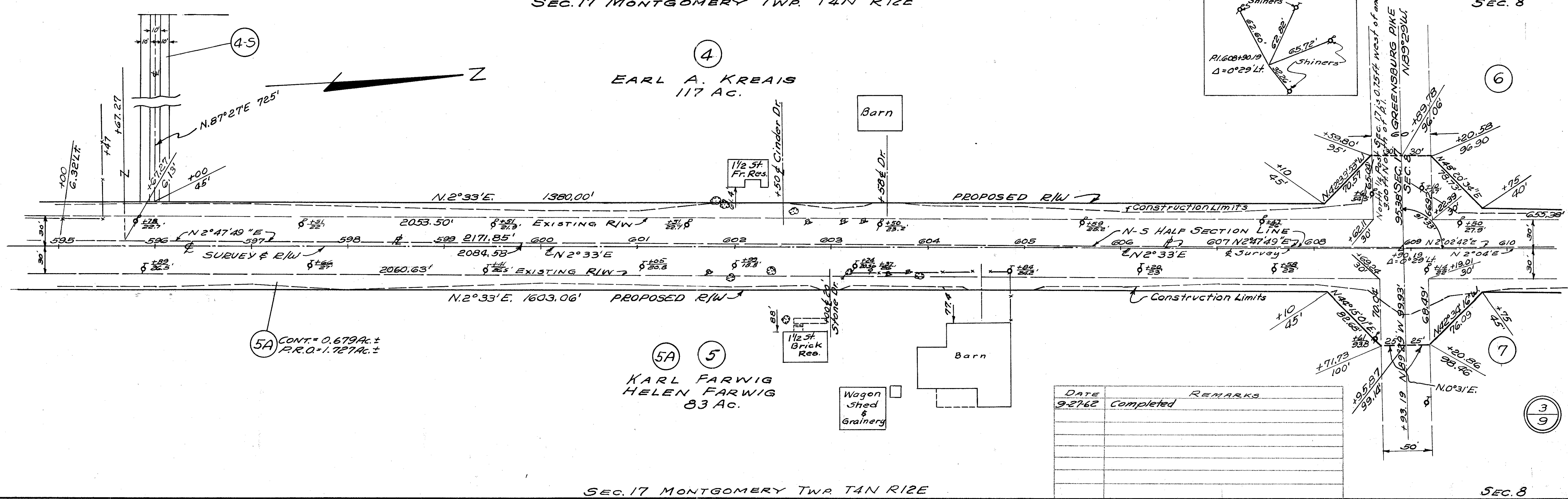
SEC. 17 MONTGOMERY TWP. T4N R12E

SEC. 17 MONTGOMERY TWP TAN RIZE

FED. RD. DIVISION	STATE	PROJECT
2	OHIO	W00-23-10.46



SEC. 17 MONTGOMERY TWP TAN RIZE



SEC. 17 MONTGOMERY TWP TAN RIZE

SEC. 8

SEC. 8 MONTGOMERY TWP TAN RIZE

FED. RD. DIVISION	STATE	PROJECT	84 89
2	OHIO		

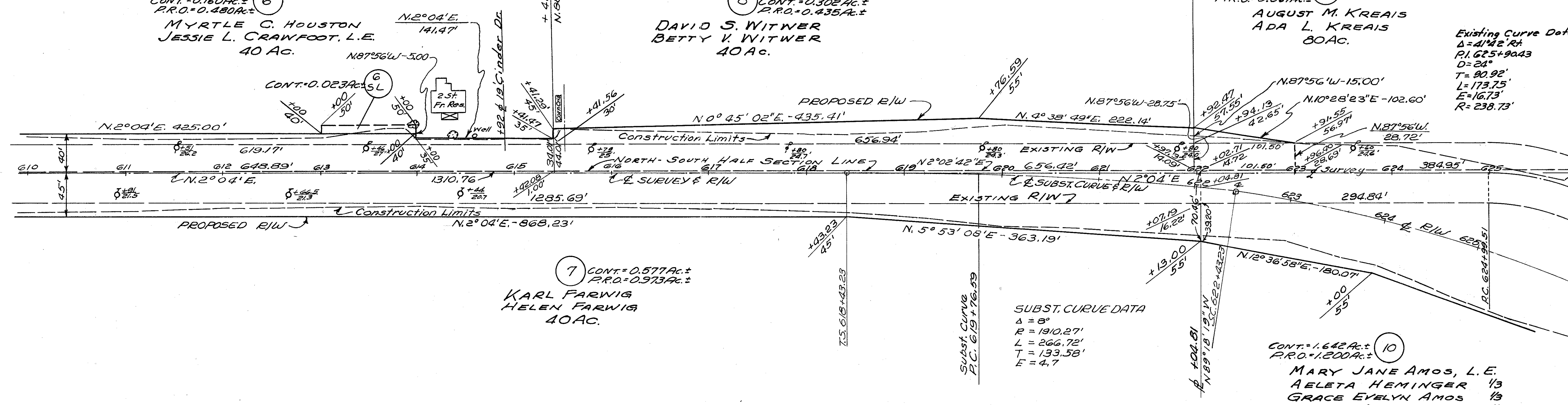
W00-23-10.46

6
CONT. = 0.160 Ac. ±
P.R.O. = 0.480 Ac. ±
MYRTLE C. HOUSTON
JESSIE L. CRAWFOOT, L.E.
40 Ac.

8
CONT. = 0.302 Ac. ±
P.R.O. = 0.435 Ac. ±
DAVID S. WITWER
BETTY V. WITWER
40 Ac.

9
CONT. = 0.017 Ac. ±
P.R.O. = 0.067 Ac. ±
AUGUST M. KREIS
ADA L. KREIS
80 Ac.

Existing Curve Data
Δ = 41°42' Rt.
P.I. 625+90.43
D = 24°
T = 90.92'
L = 173.75'
E = 16.73'
R = 238.73'



7
CONT. = 0.577 Ac. ±
P.R.O. = 0.973 Ac. ±
KARL FARWIG
HELEN FARWIG
40 Ac.

10
CONT. = 1.642 Ac. ±
P.R.O. = 1.200 Ac. ±
MARY JANE AMOS, L.E.
AELETA HEMINGER 1/3
GRACE EVELYN AMOS 1/3
VERON AMOS 1/3
120 Ac.

SEC. 8 MONTGOMERY TWP TAN RIZE

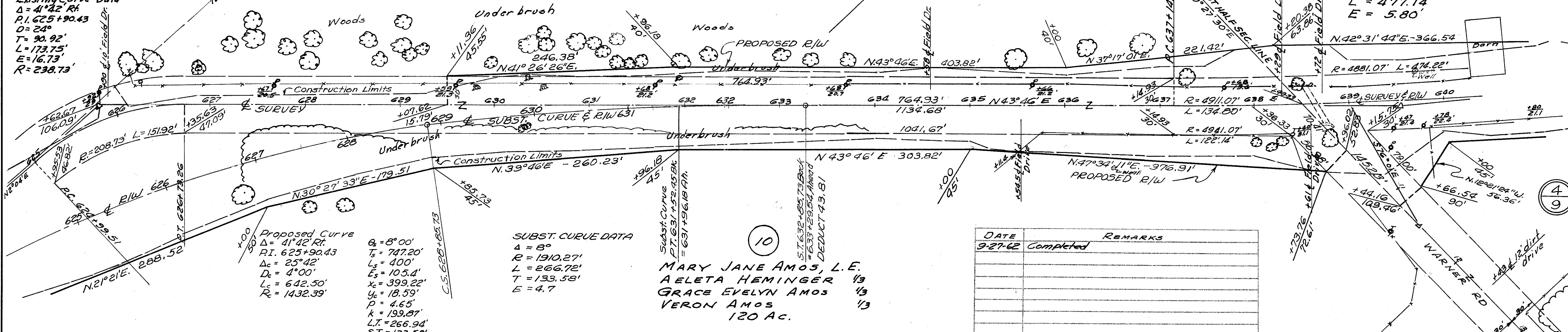
SEC. 8 MONTGOMERY TWP TAN RIZE

9
AUGUST M. KREIS
ADA L. KREIS
80 Ac.

10
CONT. = 0.659 Ac. ±
P.R.O. = 1.191 Ac. ±
MARY JANE AMOS, L.E.
AELETA HEMINGER 1/3
GRACE EVELYN AMOS 1/3
VERON AMOS 1/3
120 Ac.

EXISTING CURVE DATA
P.I. STA. 639+53.68
Δ = 5°34' Lt.
D = 1°10'
R = 4911.07'
T = 238.75'
L = 477.14'
E = 5.80'

Existing Curve Data
Δ = 41°42' Rt.
P.I. 625+90.43
D = 24°
T = 90.92'
L = 173.75'
E = 16.73'
R = 238.73'



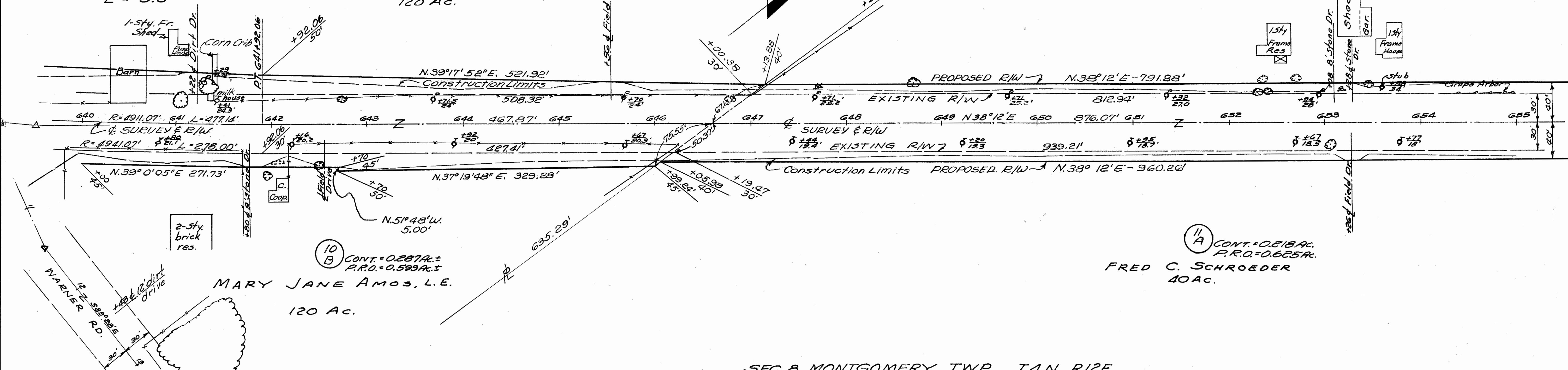
DATE	REMARKS
9-27-62	Completed

SEC. 8 MONTGOMERY TWP TAN RIZE

EXISTING CURVE DATA
 P.I. STA. 639+53.68
 $\Delta = 5^{\circ}34' L.$
 $D = 1^{\circ}10'$
 $R = 4911.07'$
 $T = 238.75'$
 $L = 477.14'$
 $E = 5.8'$

10 A
 MARY JANE AMOS, L.E.
 120 AC.

11
 CONT. = 0.184 AC.
 P.R.O. = 0.582 AC.
 FRED C. SCHROEDER
 40 AC.

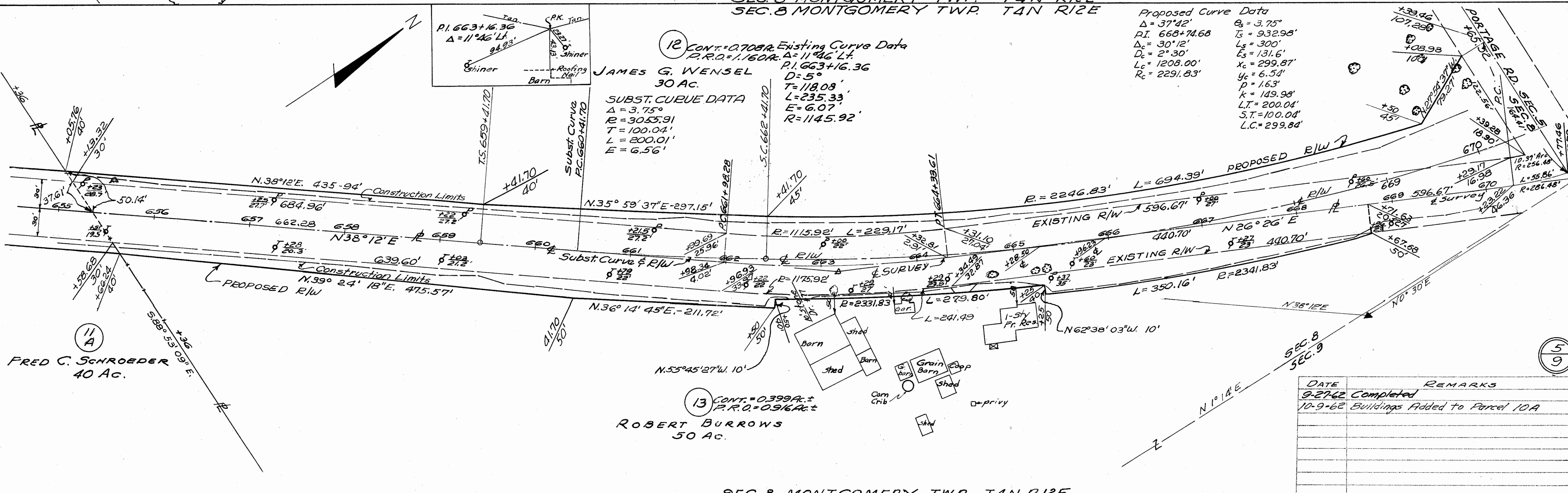


SEC. 8 MONTGOMERY TWP. T4N R12E

SEC. 8 MONTGOMERY TWP. T4N R12E

Proposed Curve Data
 $\Delta = 37^{\circ}42'$
 $P.I. 668+74.68$
 $\Delta_c = 30^{\circ}12'$
 $D_c = 2^{\circ}30'$
 $L_c = 1208.00'$
 $R_c = 2291.83'$
 $\Delta_s = 3.75^{\circ}$
 $T_s = 932.98'$
 $L_s = 300'$
 $E_s = 131.6'$
 $X_c = 299.87'$
 $Y_c = 6.54'$
 $P = 1.63'$
 $K = 149.98'$
 $L.T. = 200.04'$
 $S.T. = 100.04'$
 $L.C. = 299.84'$

12
 CONT. = 0.708 AC.
 P.R.O. = 1.160 AC.
 Existing Curve Data
 $P.I. 663+16.36$
 $\Delta = 11^{\circ}46' L.$
 $D = 5^{\circ}$
 $T = 118.08'$
 $L = 235.33'$
 $E = 6.07'$
 $R = 1145.92'$
JAMES G. WENSEL
 30 AC.
SUBST. CURVE DATA
 $\Delta = 3.75^{\circ}$
 $R = 3055.91'$
 $T = 100.04'$
 $L = 200.01'$
 $E = 6.56'$



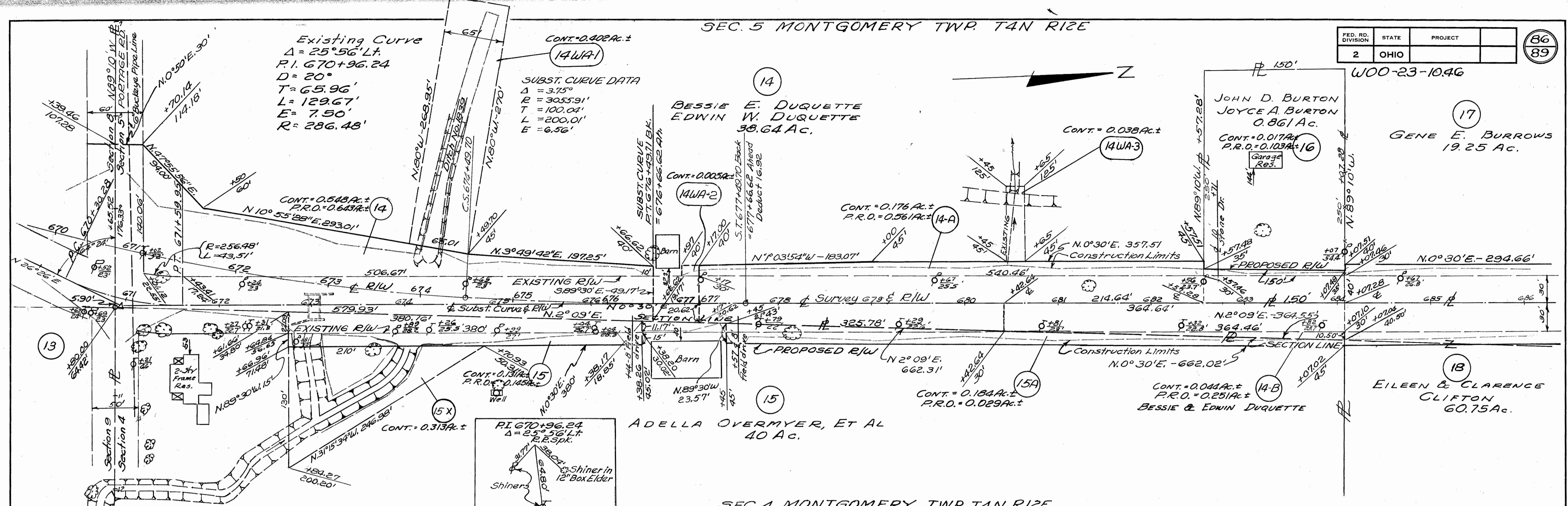
11 A
 FRED C. SCHROEDER
 40 AC.

13
 CONT. = 0.399 AC.
 P.R.O. = 0.916 AC.
 ROBERT BURROWS
 50 AC.

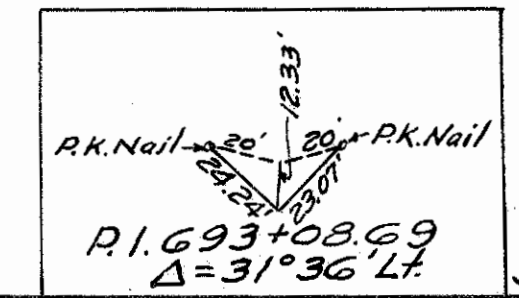
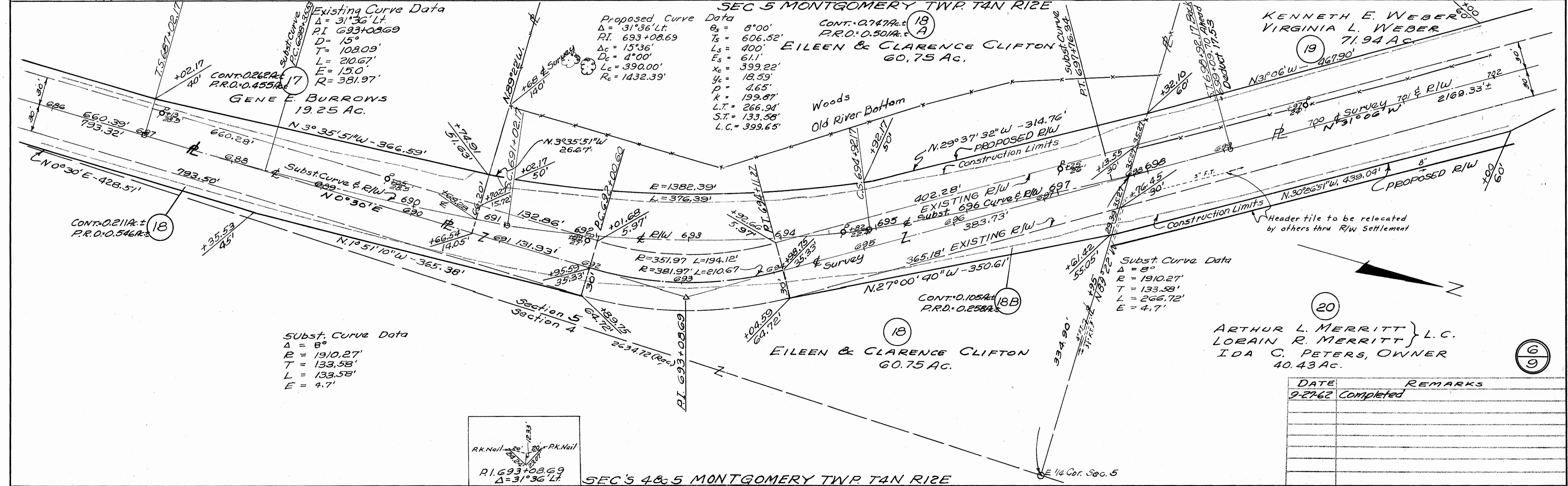
DATE	REMARKS
9-27-62	Completed
10-9-62	Buildings Added to Parcel 10A

WOO-23-10.4G

SEC. 5 MONTGOMERY TWP T4N R1E



SEC 4 MONTGOMERY TWP T4N R1E
SEC 5 MONTGOMERY TWP T4N R1E

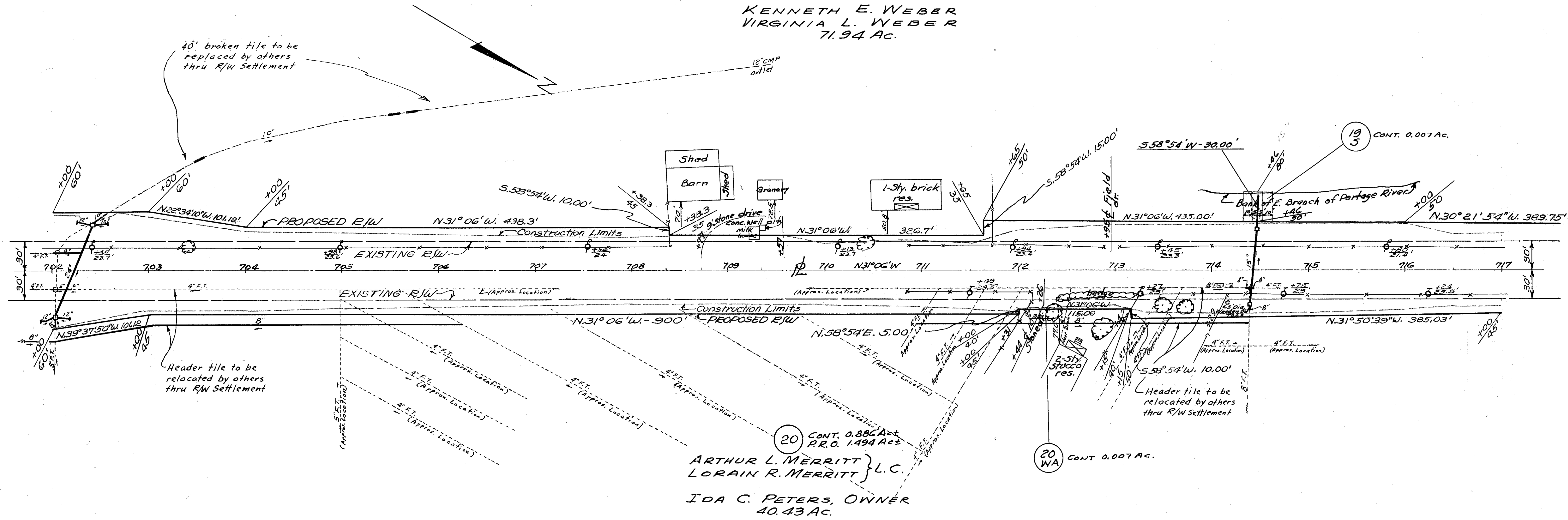


DATE	REMARKS
9-27-62	Completed

19 CONT. 0.931 Ac
P.R.O. 1.493 Act

KENNETH E. WEBER
VIRGINIA L. WEBER
71.94 AC.

19 5 CONT. 0.007 Ac.



20 CONT. 0.886 Ac
P.R.O. 1.494 Act

ARTHUR L. MERRITT } L.C.
LORAIN R. MERRITT }
IDA C. PETERS, OWNER
40.43 AC.

20 WA CONT. 0.007 AC.

DATE	REMARKS
9-27-62	Completed

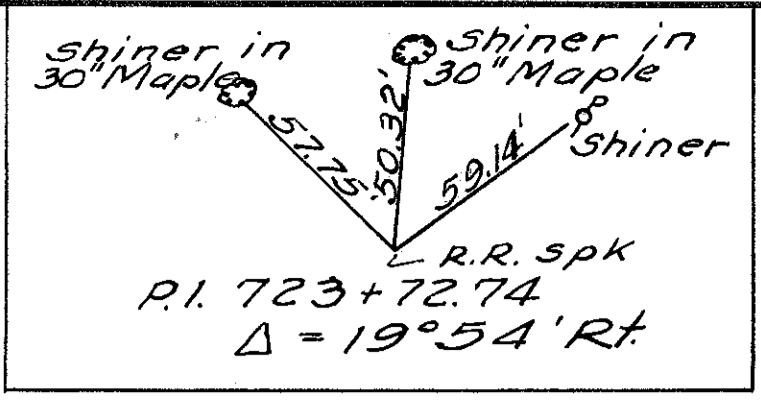
SEC. 5 MONTGOMERY TWP T4N R12E

SEC. 32 FREEDOM TWP T5N R12E

FED. RD. DIVISION	STATE	PROJECT	
2	OHIO		

W00-23-10.46

88
89



NORMAN W. KREIENKAMP
50 AC.

CONT. 0.702 AC ±
P.R.O. 0.804 AC ±

19
KENNETH E. WEBER
VIRGINIA L. WEBER
71.94 AC.

20
ARTHUR L. MERRITT } L.C.
LORAIN R. MERRITT }
IDA C. PETERS, OWNER

NORMAN W. KREIENKAMP
50 AC.
CONT. 0.551 AC ±
P.R.O. 0.729 AC ±

Existing Curve Data
Δ = 19°54' Rt.
P.I. 723+72.74
D = 15°
T = 67.01'
L = 132.67'
E = 5.83'
R = 381.97'

Proposed Curve Data
Δ = 36°36' Rt.
P.I. 728+13.92
Dc = 31°36'
Dc = 2°30'
Lc = 1264.00'
Rc = 2291.83'
For'wd T = 762.83'
L.T. = 266.73'
S.T. = 133.43'

θs = 5°
Ts (Back) = 953.98'
Ls (Back) = 400'
Es = 123.62'
Xc = 399.70'
Yc = 11.63'
p = 2.91'
k = 199.95'

22
GEORGE F. RAU
42 AC.
CONT. 0.474 AC ±
P.R.O. 0.472 AC ±

22
GEORGE F. RAU
42 AC.
CONT. 2.440 AC ±
P.R.O. 1.048 AC ±

SEC. 5 MONTGOMERY TWP T4N R12E
SEC. 32 FREEDOM TWP T5N R12E

SEC. 32 FREEDOM TWP T5N R12E

22
GEORGE F. RAU
42 AC.

23
EMMA L. DIERKSHEIDE
96 AC.

EXISTING CURVE DATA
Δ = 35°48' Lt.
P.I. 749+98.67
D = 18°20'
T = 100.96'
L = 195.31'
E = 15.95'
R = 312.58'

SUBSTITUTE CURVE
Δ = 8°
R = 1910.28'
T = 133.58'
L = 266.73'

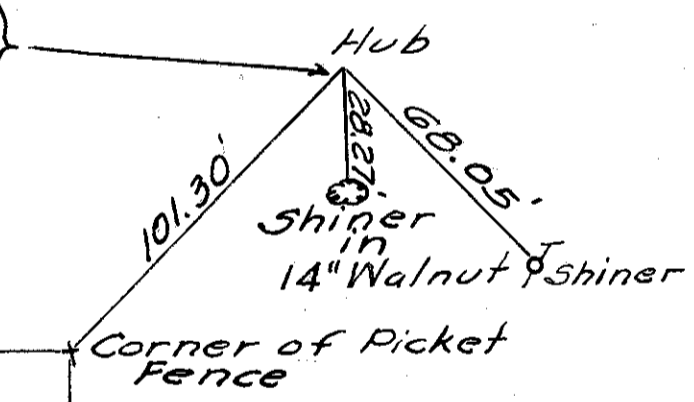
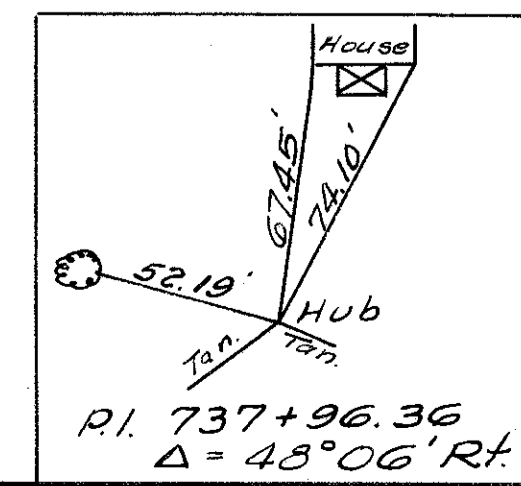
EXISTING CURVE DATA
Δ = 48°06' Rt.
P.I. 737+95.22
D = 45°
T = 56.82'
L = 106.89'
E = 12.10'
R = 127.32'

22
GEORGE F. RAU
42 AC.
CONT. 2.440 AC ±
P.R.O. 1.048 AC ±

Proposed Curve Data
Δ = 24°54' Rt.
P.I. 738+95.03
Dc = 17°54'
Dc = 3°30'
Lc = 511.43'
Rc = 1637.02'
Back T = 371.09'
L.T. = 266.88'
S.T. = 133.52'

DATE	REMARKS
9-27-62	Completed

23
EMMA L. DIERKSHEIDE
96 AC.
CONT. 0.114 AC ±
P.R.O. 0.189 AC ±

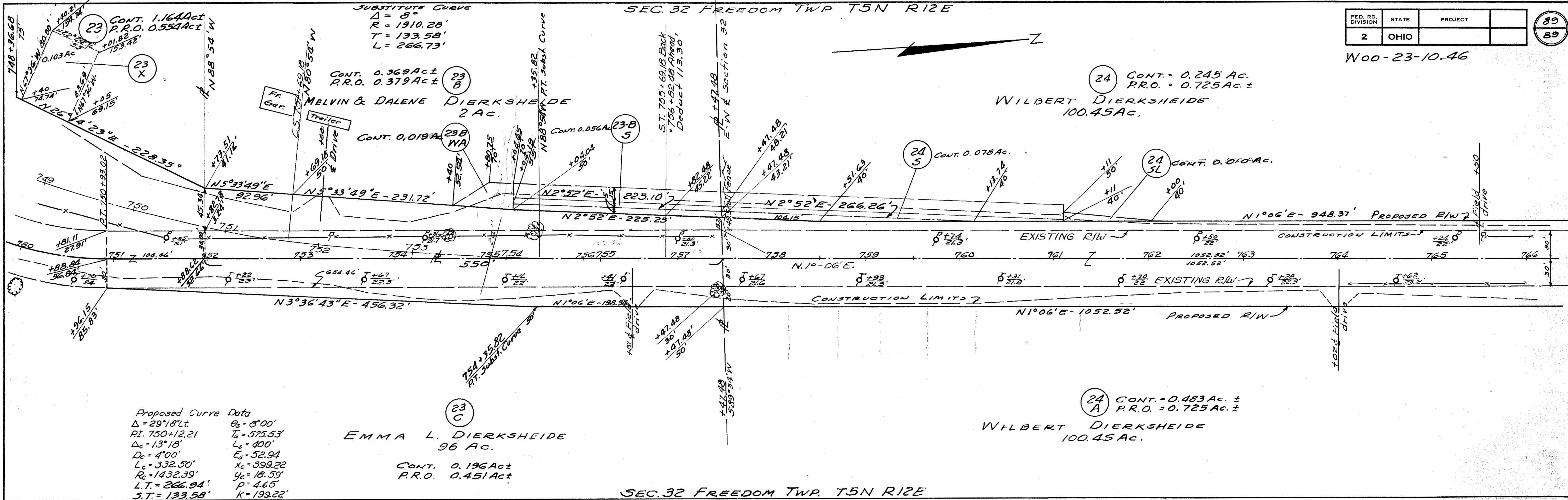


SEC. 32 FREEDOM TWP T5N R12E

89

FED. RD. DIVISION	STATE	PROJECT	
2	OHIO		

W00-23-10.46



END PROJECT STA 767+30

W00-23-10.46

9
9