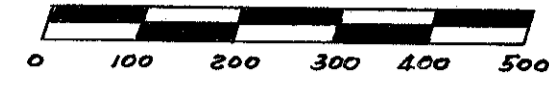
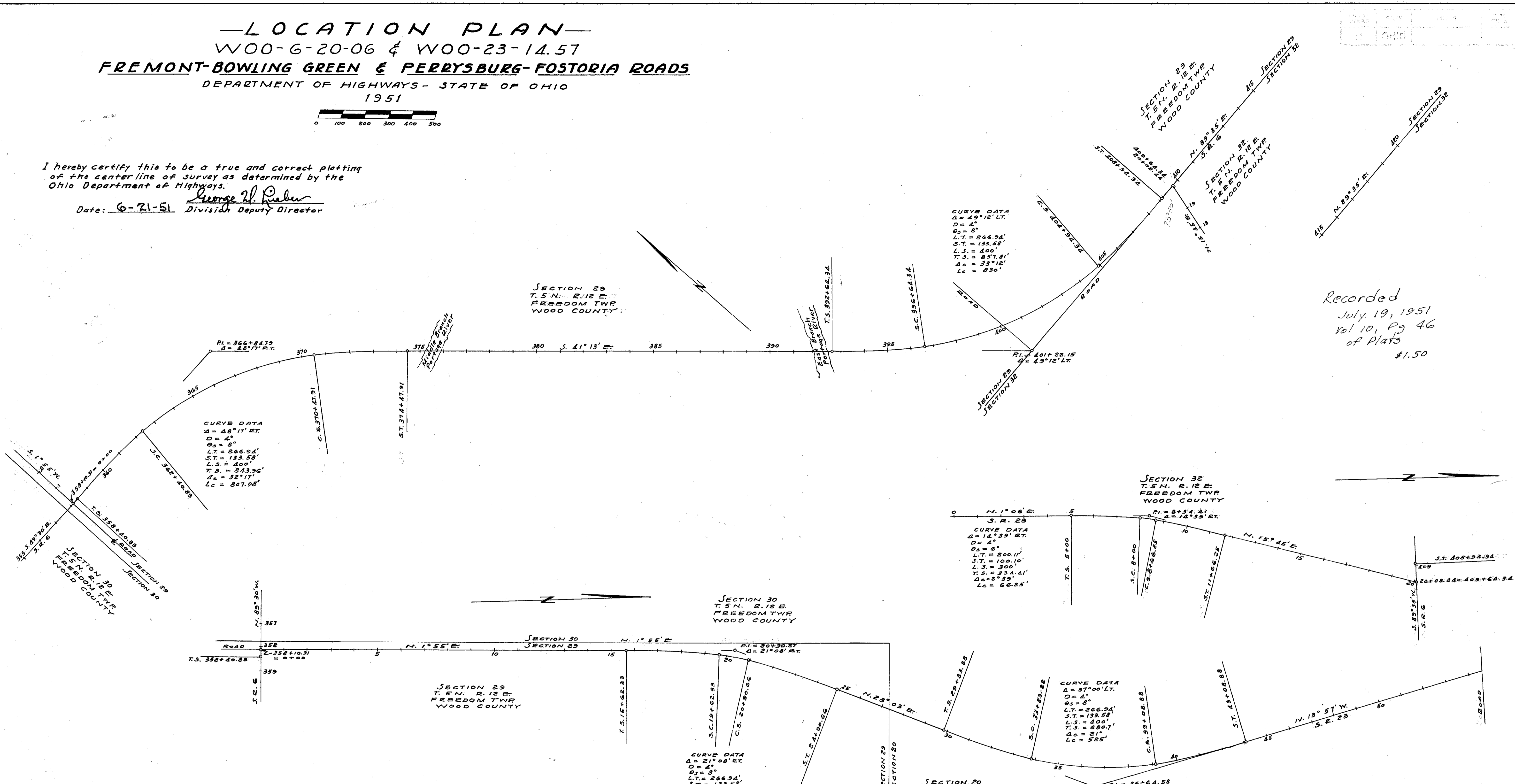


**-LOCATION PLAN-**  
**W00-6-20-06 & W00-23-14.57**  
**FREMONT-BOWLING GREEN & PERRYSBURG-FOSTORIA ROADS**  
 DEPARTMENT OF HIGHWAYS - STATE OF OHIO  
 1951



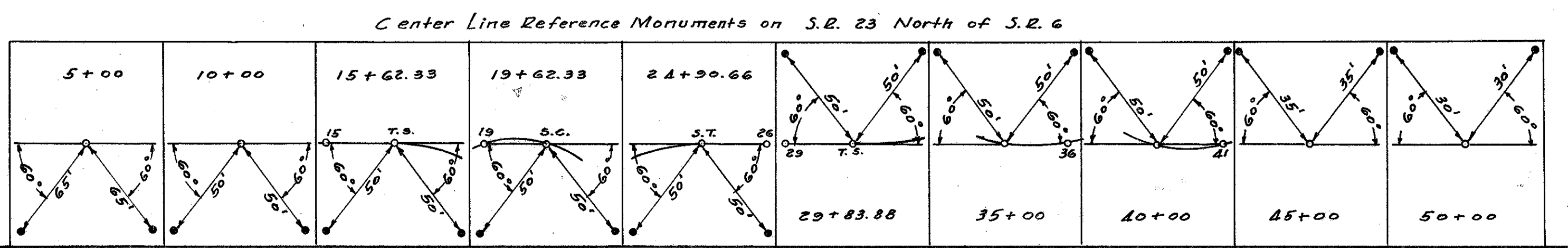
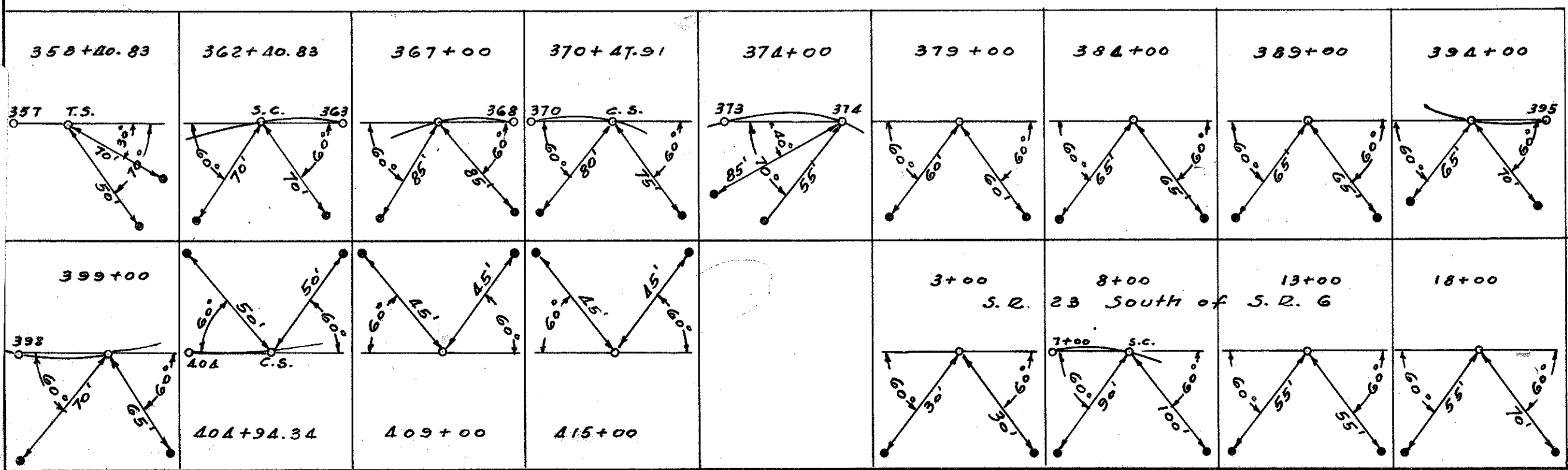
I hereby certify this to be a true and correct platting of the center line of survey as determined by the Ohio Department of Highways.

Date: 6-21-51 *George H. Fisher*  
 Division Deputy Director



Recorded  
 July 19, 1951  
 Vol 10, Pg 46  
 of Plats  
 \$1.50

CENTER LINE REFERENCE MONUMENTS WILL BE SET BEFORE OR AFTER CONSTRUCTION



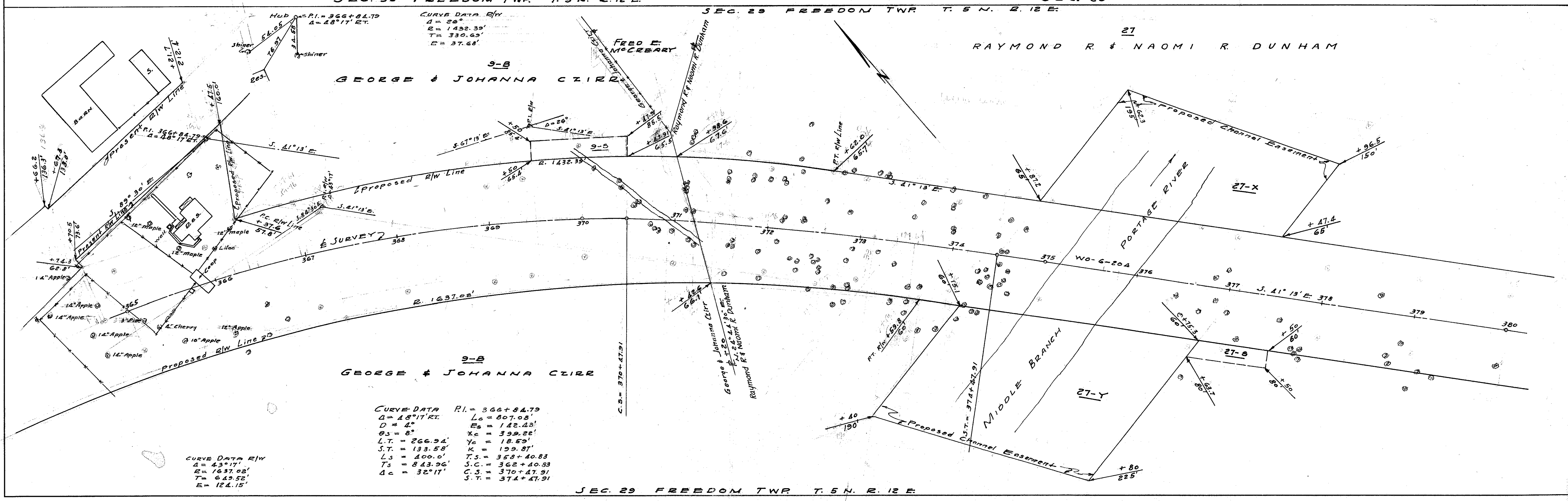
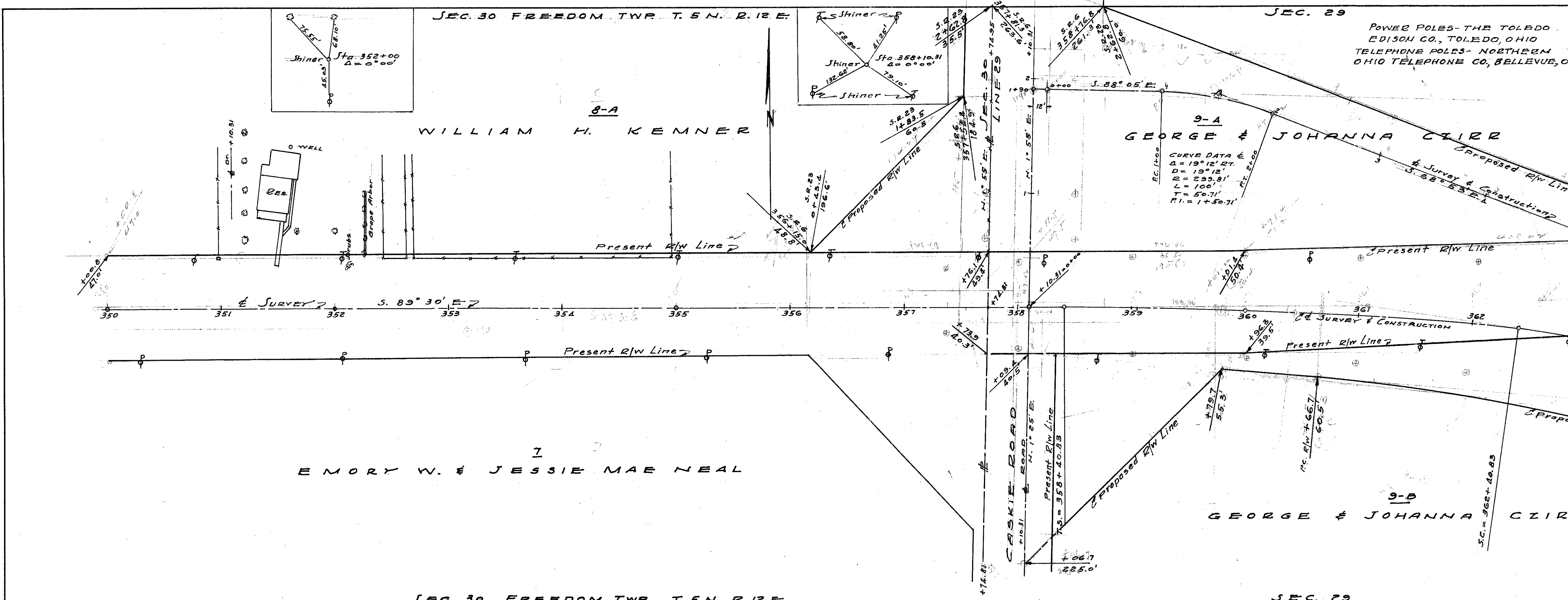
F0004 2 D-43

Scanned July 1977

3-5-3

**WOOD COUNTY**  
**W00-6-20.06**  
**W00-23-14.57**  
**R/W PLANS**

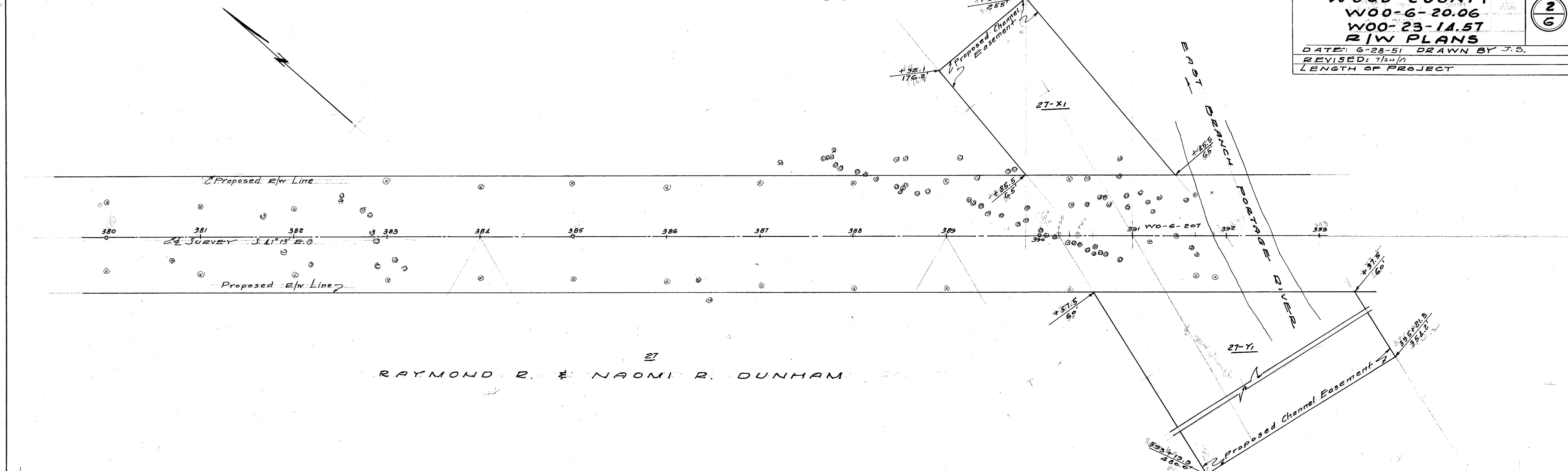
DATE: 6-28-51 DRAWN BY J.S.  
 REVISED:  
 LENGTH OF PROJECT



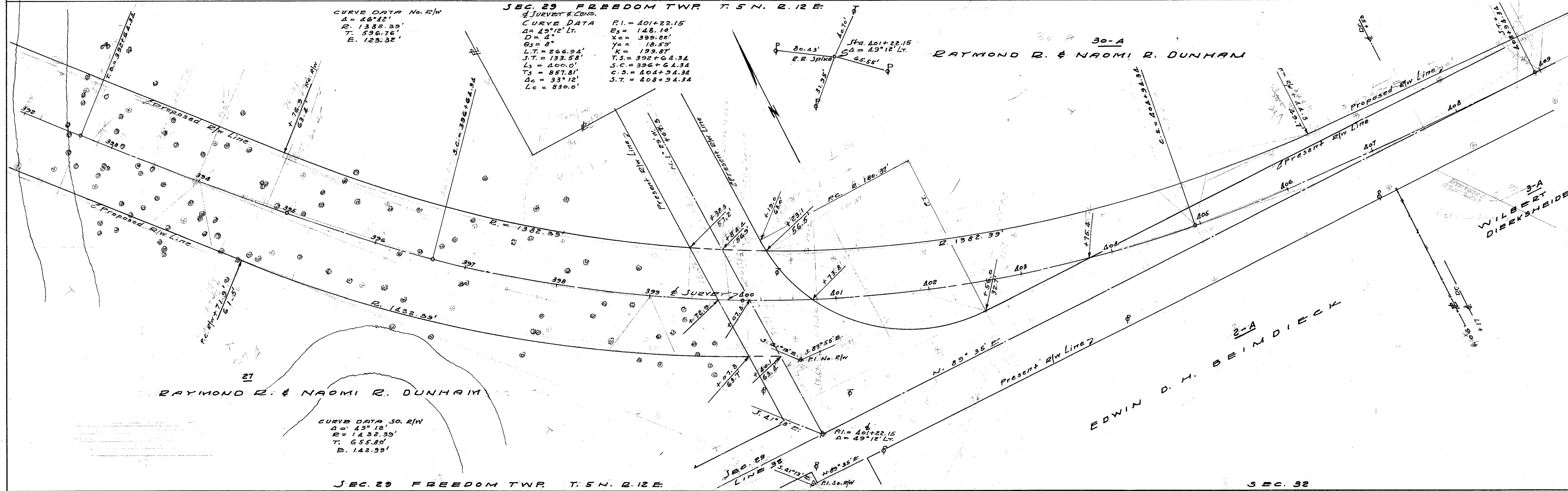
WOOD COUNTY  
 WOO-6-20.06  
 WOO-23-14.57  
 R/W PLANS

DATE: 6-28-51 DRAWN BY J.S.  
 REVISED: 7/24/51  
 LENGTH OF PROJECT

2  
6



RAYMOND R. & NAOMI R. DUNHAM

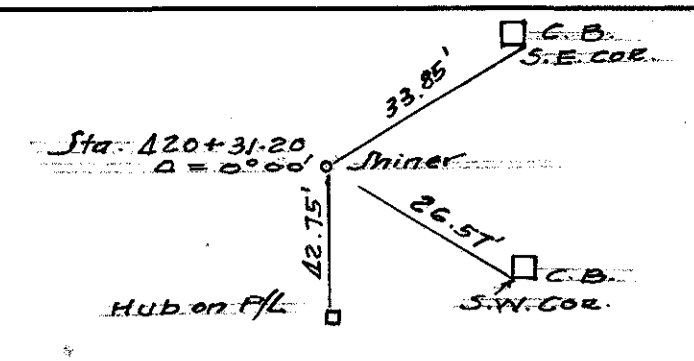
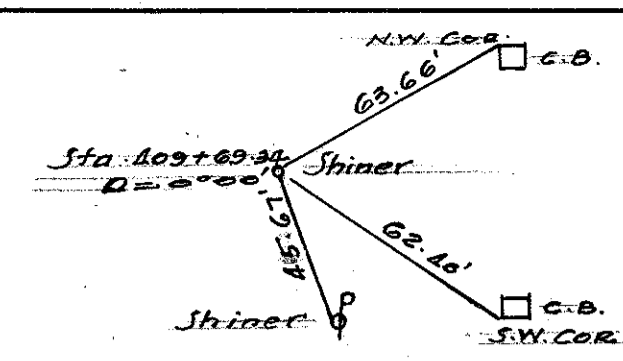


CURVE DATA No. 2/W  
 Δ = 46°12'  
 R = 1382.33'  
 T = 596.76'  
 E = 123.32'

SEC. 29 FREEDOM TWP T. 5 N. R. 12 E.  
 SURVEY & COMS.  
 CURVE DATA  
 Δ = 49°12' Lt.  
 D = 4'  
 θ = 8'  
 L.T. = 226.94'  
 J.T. = 133.58'  
 Ls = 400.0'  
 Ts = 857.81'  
 Δc = 33°12'  
 Lc = 830.0'

PI = 401+22.15  
 Es = 148.10'  
 Xc = 399.22'  
 Yc = 10.59'  
 K = 199.87'  
 T.S. = 392+64.34  
 S.C. = 396+64.34  
 C.S. = 404+94.34  
 S.T. = 408+94.34

CURVE DATA, SO. R/W  
 Δ = 43°12'  
 R = 1432.33'  
 T = 655.80'  
 E = 142.93'



30-A  
RAYMOND R. & NAOMI R. DUNHAM

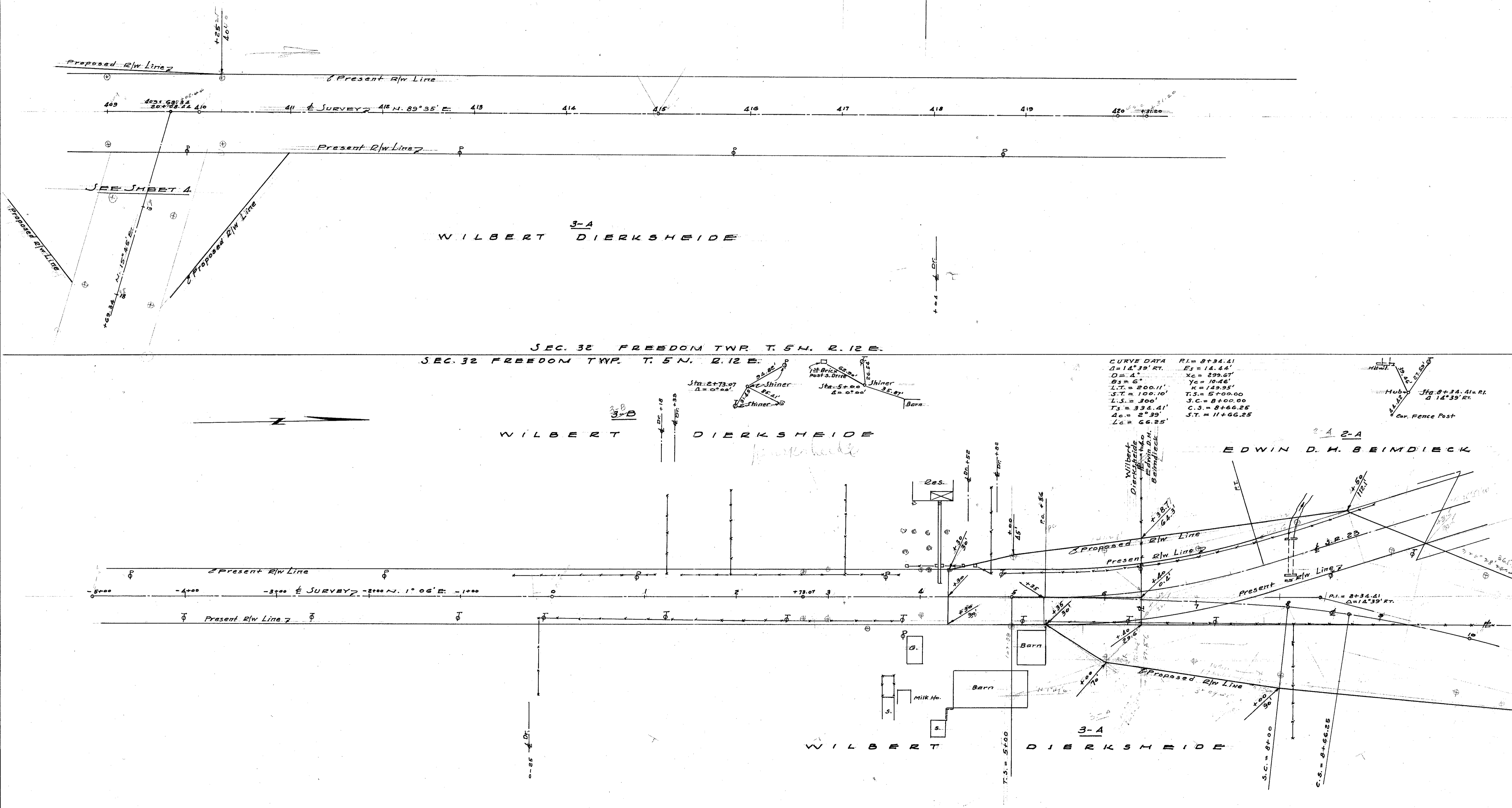
3-A  
WILBERT DIERKSHEIDE

CURVE DATA	
PI = 8+34.41	Es = 18.44'
Δ = 14° 39' RT.	Xc = 299.67'
D = 4"	Yc = 10.46'
Rs = 6"	K = 149.55'
L.T. = 200.11'	T.S. = 5+00.00
S.T. = 100.10'	S.C. = 8+00.00
L.S. = 300'	C.S. = 8+66.25
Ts = 334.41'	S.T. = 11+66.25
Δc = 2° 39'	
Lc = 66.25'	

WILBERT DIERKSHEIDE

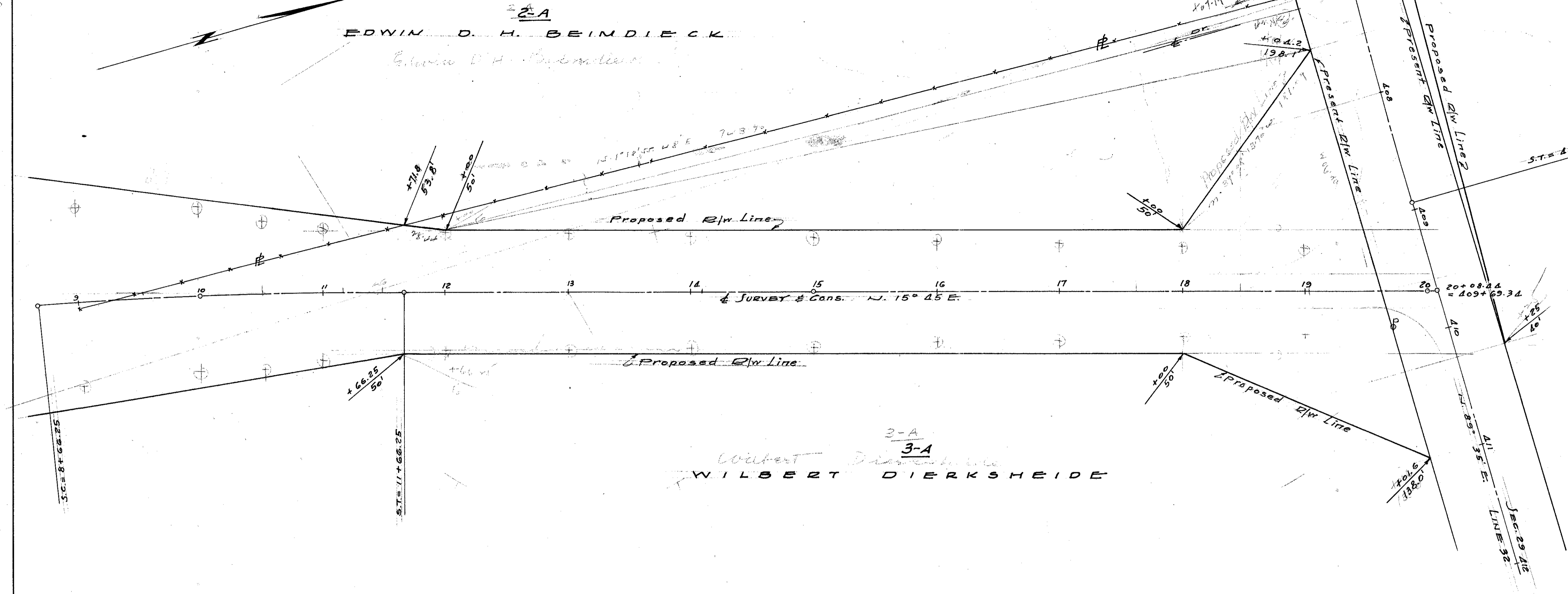
EDWIN D. H. BEIMDIECK

3-A  
WILBERT DIERKSHEIDE

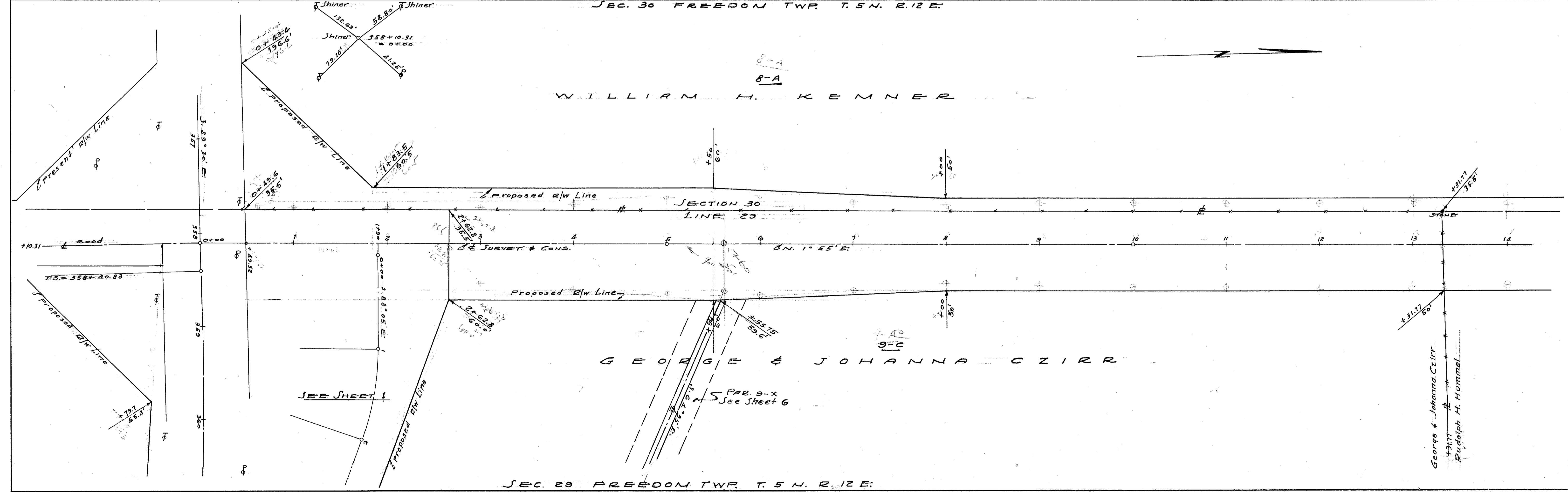


**WOOD COUNTY**  
**W00-6-20.06**  
**W00-23-14.57**  
**R/W PLANS**

DATE: 6-28-51 DRAWN BY J.S.  
 REVISED: 7/24/51 9/14/51  
 LENGTH OF PROJECT



30-A  
 RAYMOND B. & NAOMI R. DUNHAM



SEC. 30

SEC. 29 FREEDOM TWP. T. 5 N. R. 12 E.

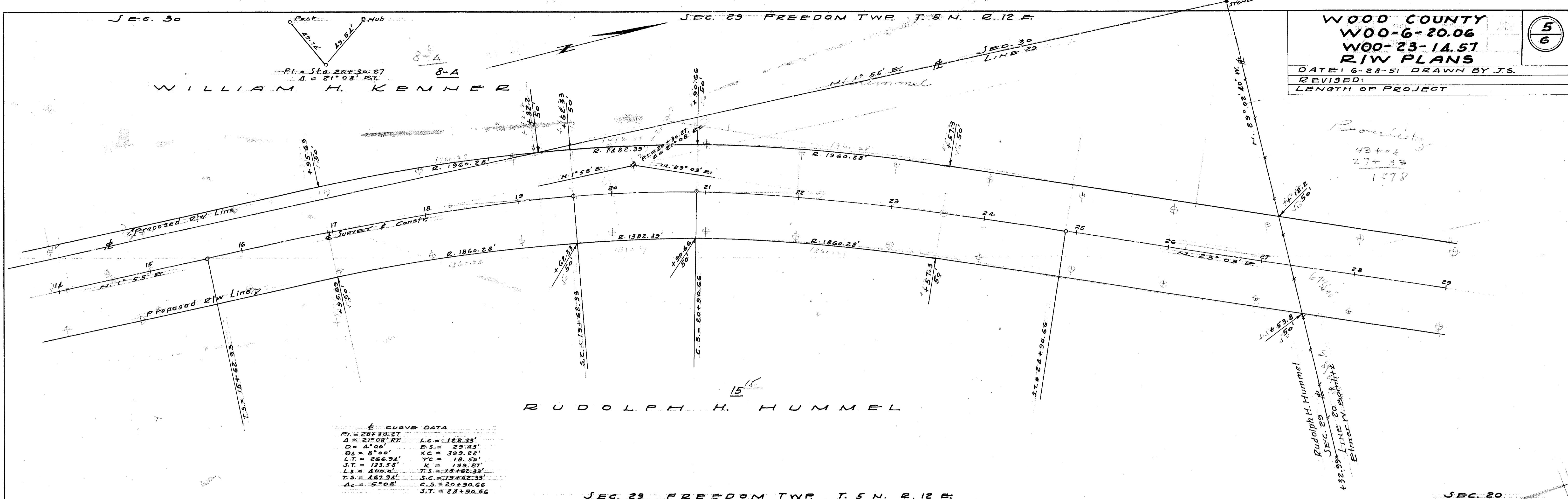
WOOD COUNTY  
 WOO-6-20.06  
 WOO-23-14.57  
 R/W PLANS

DATE: 6-28-51 DRAWN BY J.S.  
 REVISED:  
 LENGTH OF PROJECT

5  
6

WILLIAM H. KENNER

PI = Sta. 20+30.27  
Δ = 21° 08' RT.



15

RUDOLPH H. HUMMEL

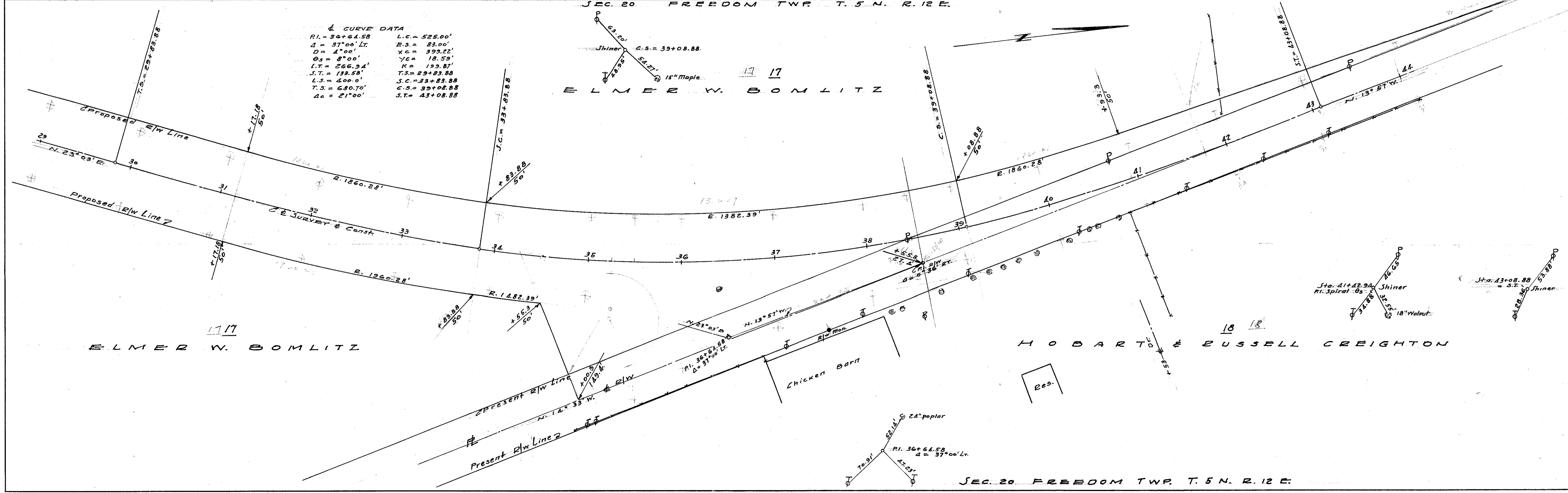
CURVE DATA	
RI = 20+30.27	L.C. = 128.33'
Δ = 21° 08' RT	E.S. = 29.43'
D = 4° 00'	X.C. = 399.22'
OS = 8° 00'	Y.C. = 18.59'
L.T. = 266.94'	K = 199.87'
J.T. = 133.58'	T.S. = 19+66.33'
L.S. = 400.0'	S.C. = 19+62.33'
T.S. = 467.94'	C.S. = 20+90.66'
Δc = 5° 08'	J.T. = 24+90.66'

SEC. 29 FREEDOM TWP. T. 5 N. R. 12 E.  
SEC. 20 FREEDOM TWP. T. 5 N. R. 12 E.

17

ELMER W. BOMLITZ

CURVE DATA	
RI = 36+64.58	L.C. = 525.00'
Δ = 37° 00' LT	E.S. = 83.00'
D = 4° 00'	X.C. = 399.22'
OS = 8° 00'	Y.C. = 18.59'
L.T. = 266.94'	K = 199.87'
J.T. = 133.58'	T.S. = 29+83.88'
L.S. = 400.0'	S.C. = 33+83.88'
T.S. = 680.70'	C.S. = 39+08.88'
Δc = 21° 00'	J.T. = 43+08.88'



ELMER W. BOMLITZ

HOBART & RUSSELL CREIGHTON

SEC. 20 FREEDOM TWP. T. 5 N. R. 12 E.

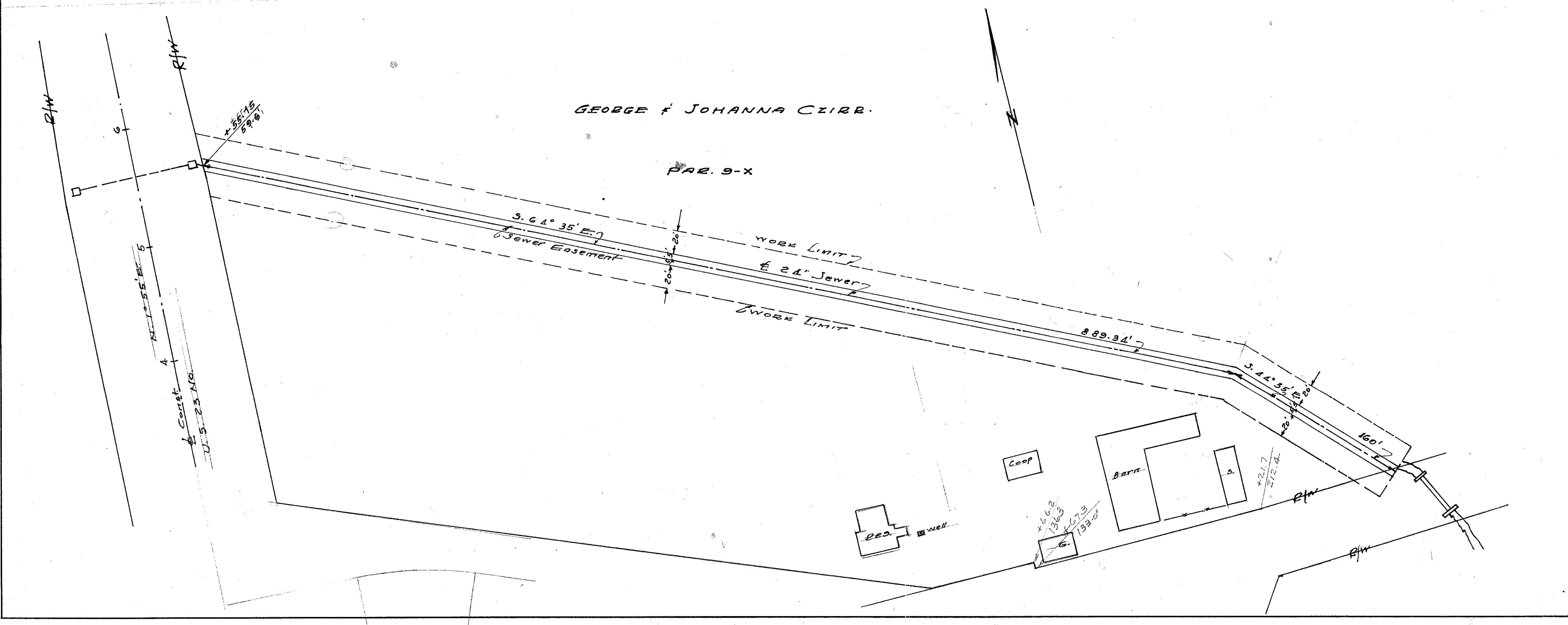
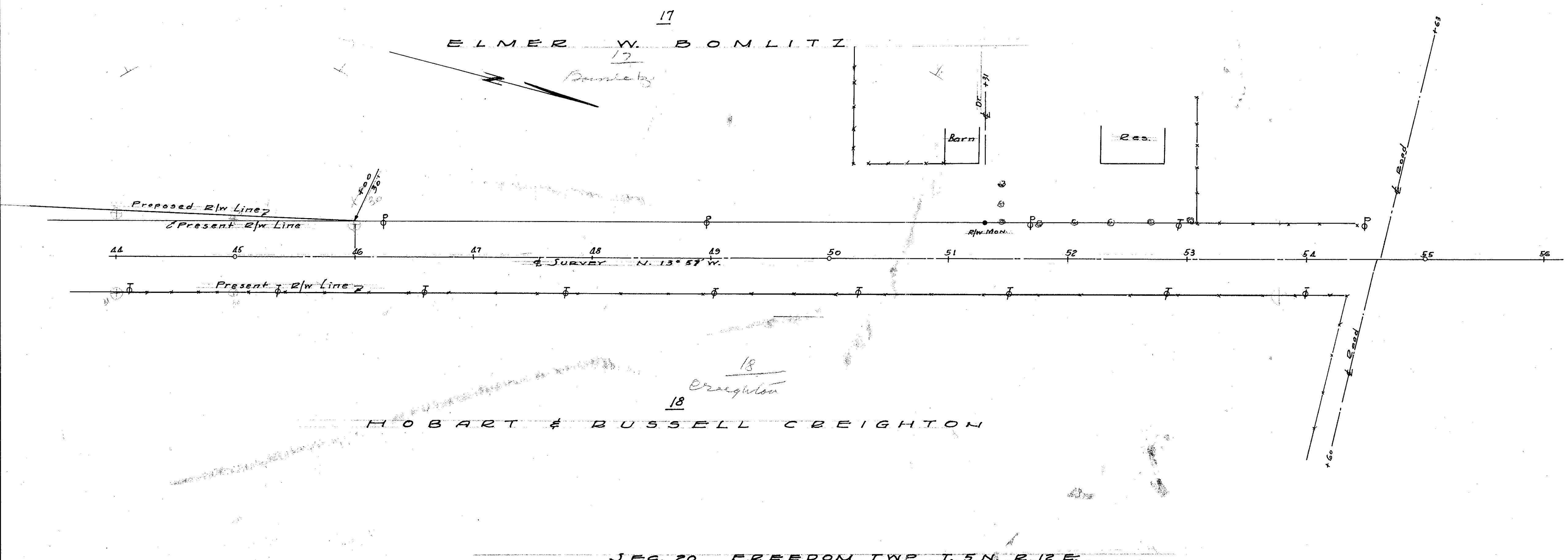
Scanned July 1977

SEC. 20 FREEDOM TWP. T. 5 N. R. 12 E.

WOOD COUNTY  
W00-6-20.06  
W00-23-14.57  
R/W PLANS

DATE: 6-28-51 DRAWN BY J.S.  
REVISED: 9/2/51  
LENGTH OF PROJECT

6  
6



D-03