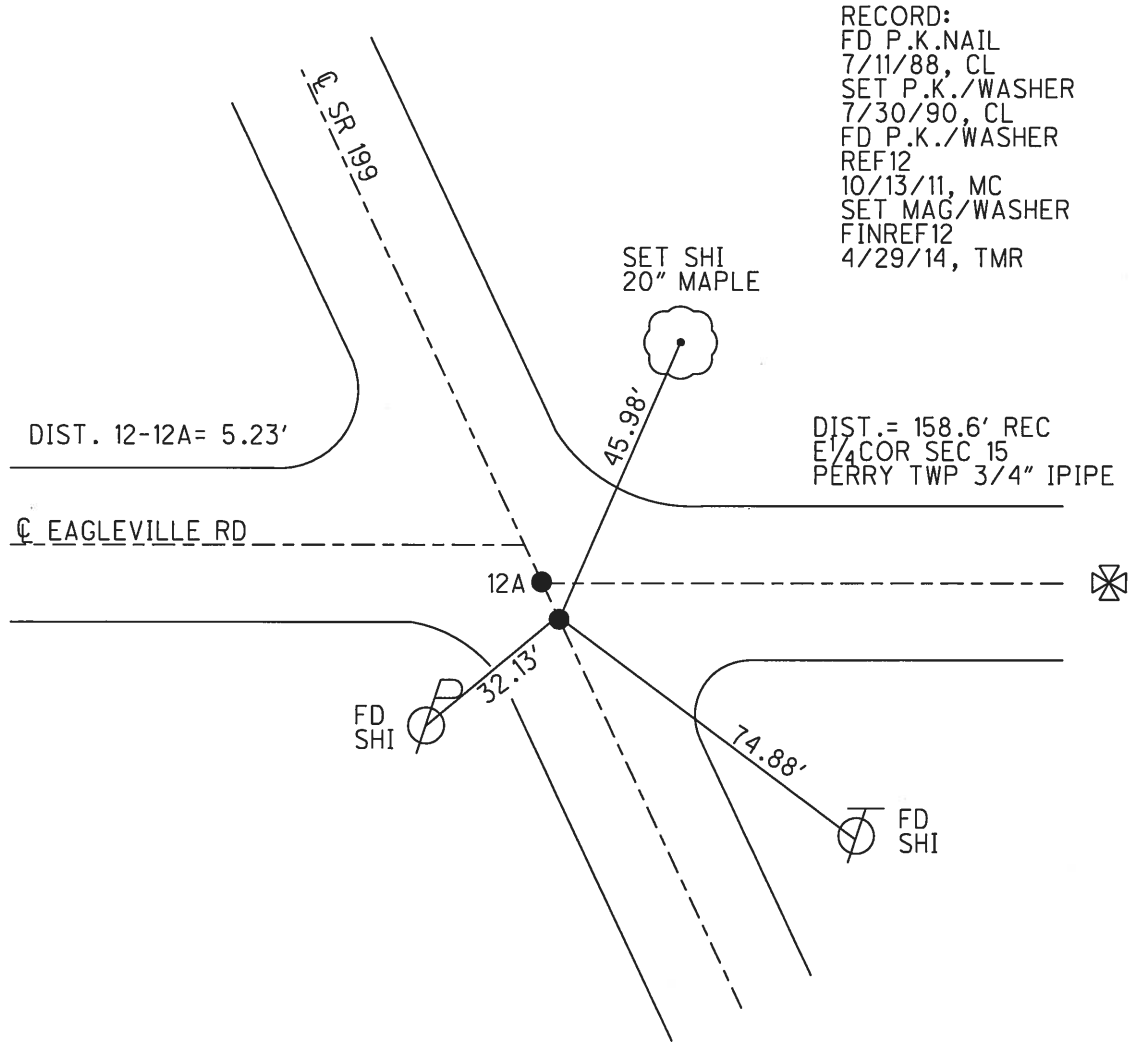
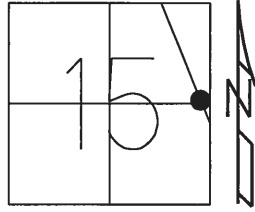


O.D.O.T. DISTRICT 2 SURVEY OFFICE (USE ONLY)

PERSONNEL \_\_\_\_\_ REFERENCE NO. 12 SHEET 17 OF 24  
 NOTES ROUSOS DATE 5-6-13 ROUTE SR 199  
 H.C. HOMAN WEATHER CLOUDY COUNTY WOOD  
 R.C. GABLE TEMP. 65° TOWNSHIP PERRY  
 SECTION 15  
 T 3 N R 12 E

TYPE MONUMENT P.K./WASHER  
 ON SURFACE - ~~BELOW~~ ON \_\_\_\_\_  
 LEFT - ☉ PAV'T - ~~RIGHT~~ 2.0'  
 - TO - EDGE PAVEMENT  
 S.L.M. 217+85.2  
 Grid: Northing: 566419.373 Easting: 1704792.590



RECORD:  
 FD P.K.NAIL  
 7/11/88, CL  
 SET P.K./WASHER  
 7/30/90, CL  
 FD P.K./WASHER  
 REF12  
 10/13/11, MC  
 SET MAG/WASHER  
 FINREF12  
 4/29/14, TMR

DIST. = 158.6' REC  
 E 1/4 COR SEC 15  
 PERRY TWP 3/4" IPIPE

# O.D.O.T. DISTRICT 2 SURVEY OFFICE

PERSONNEL

REFERENCE NO. 12

SHEET      OF     

NOTES LOHRKE

H.C. BARNHISEL

R.C. Reed

DATE 7-11-88

WEATHER Pt Cloudy

TEMP. +80

ROUTE SR 19

COUNTY WOOD

TOWNSHIP Perry

SECTION 15

T 3 N R 12 E

TYPE MONUMENT PK NAILS

ON SURFACE - ~~BELOW~~ Yes

LEFT-~~OF~~ PAV'T. RIGHT Yes 2.4'

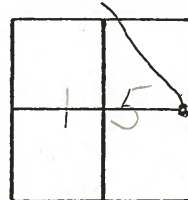
TO EDGE PAVEMENT

S.L.M. 215+98

Set P.K. WASHERS

7-30-90

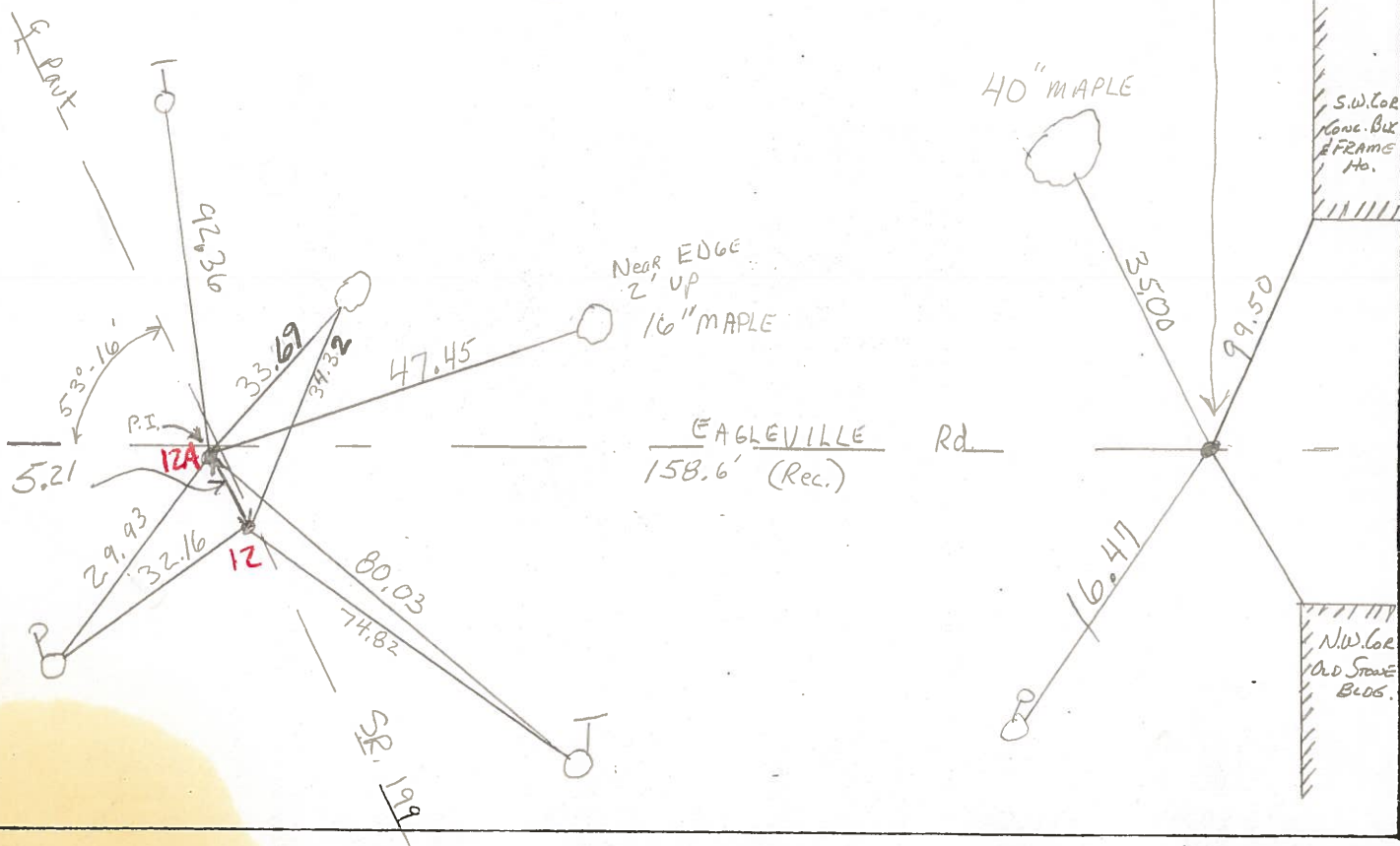
C.L.



5.21 Between Pts

P.I. Sta 199+42.1  
 $\Delta = 0^\circ - 37' R$

E 1/4 cor. Sec 15  
 Perry Twp.  
 3/4" Iron Pipe



County WOOD S.R. 199

Township PERRY

Section 15

T N, R E

Personnel BURNSIDE

SMITH

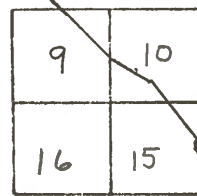
BOWERS

MEAD

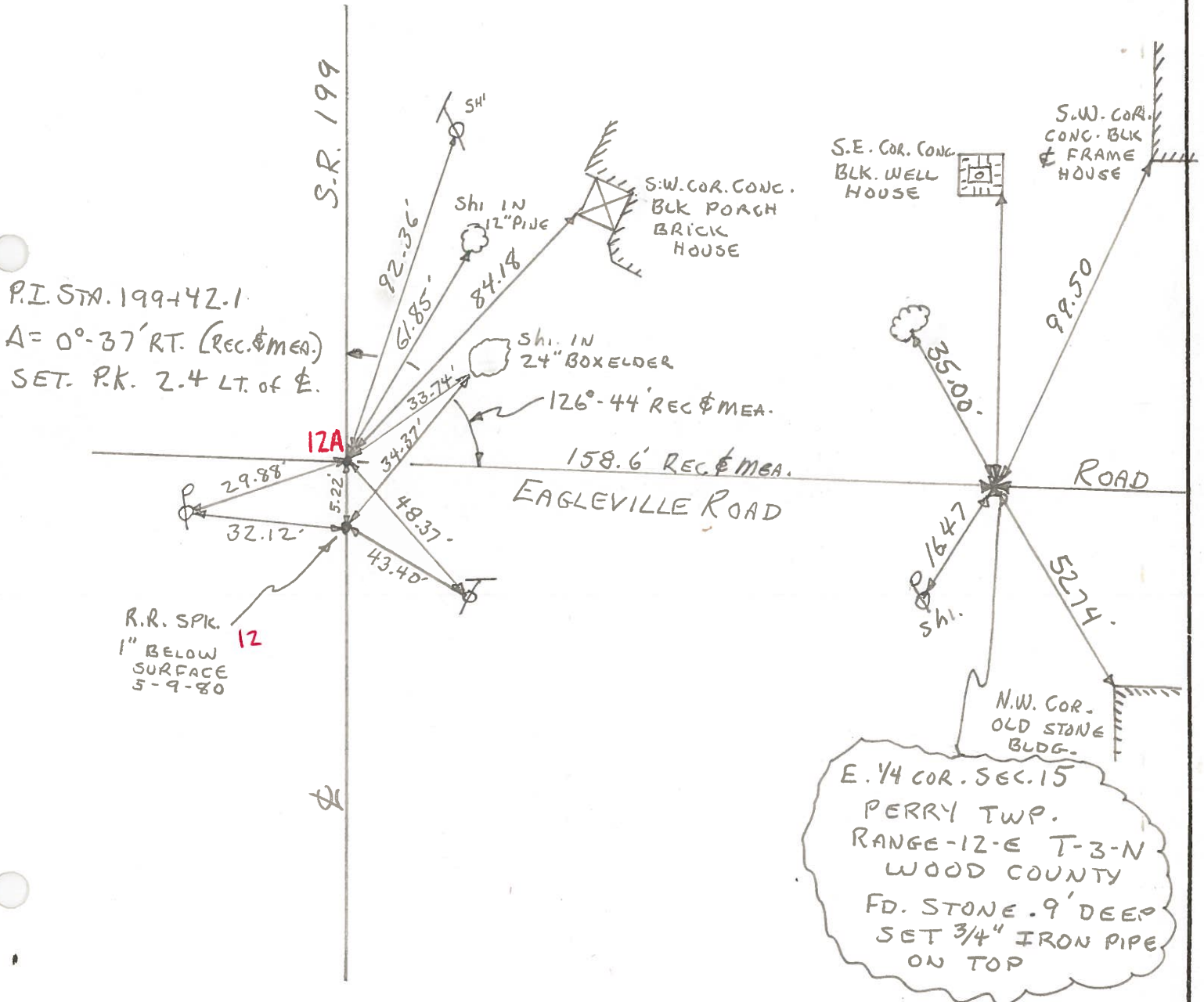
Date 1-19-72 (CHKD 5-9-80)

Weather PT. CLOUDY

Temp. +40°



#12



PERSONNEL TITLE PERSONNEL TITLE  
 BURNSIDE  
 SMITH  
 BOWERS

COUNTY Wood  
 DATE 0K-5-9-80  
~~1-19-72~~  
 S. R. 199 WEATHER Pt. CLOUDY  
 SEC. 15 TEMP. +40°

DESCRIPTION EAGLEVILLE ROAD & S.R. 199 JOB NO.

